

INTRODUCTION

This report fulfills the written quarterly report requirement as outlined in Section 3.1.2 Communication Protocol During Construction of the Mitigation Monitoring, Compliance, and Reporting Program (MMCRP). This report provides an overview of construction progress, resulting impacts, an assessment of mitigation measure (MM) and applicant-proposed measure (APM) implementation by resource area, a tentative construction schedule for the next quarter, and other noteworthy activities conducted by LS Power Grid California, LLC (LSPGC) on the Manning 500/230 Kilovolt Substation Project (Project) during the quarter ending on March 31, 2026. Work on the Project was primarily conducted by LS Power Grid California, LLC (LSPGC); Clark Bros., Inc. (CBI); and EPC Services Company (EPCS). Environmental compliance management and monitoring was provided by Insignia Environmental (Insignia).

CONSTRUCTION OVERVIEW

This report covers construction activities occurring during the quarter starting on January 1, 2026 and ending on March 31, 2026. A summary of construction activities for the Project component that is currently authorized is provided in the following subsection.

CONSTRUCTION ACTIVITIES

Manning Substation

- Mowed the substation site and water source location
- Installed and maintained best management practices (BMPs)
- Set up water supply tank at water source location
- Disked the substation site
- Began grading and compaction of the substation site
- Implemented dust-control measures, including watering work areas and access roads
- Disked, scraped, and rolled the access roads as needed

The estimated construction progress to date for each Project component is provided in Table 1: Construction Activity Completion Status, and a tentative construction schedule for next quarter is provided in Attachment A: Tentative Construction Schedule for Quarter Two. Photographs documenting environmental compliance and construction activities are provided in Attachment B: Photographs. Applicable APMs and MMs from Project plans and permits were implemented prior to or during construction activities.

Dann Chesmore (Insignia, Environmental Inspector [EI]), was on site each day to ensure proper implementation of APMs and MMs. All Project activities were conducted in accordance with the MMCRP and applicable plans and permits.

MINOR PROJECT REFINEMENTS

LSPGC submitted one Minor Project Refinement (MPR) request to the California Public Utilities Commission (CPUC) during this reporting period. The MPR-1 request was approved by the CPUC on February 6, 2026. Approval of MPR-1 authorized expansion of the substation detention basin and fence, increased grading at the northern substation boundary, expansion of the substation driveway width, and a slight north shift of the substation driveway location.

WORKER ENVIRONMENTAL AWARENESS PROGRAM

A total of 59 new Project personnel attended the required Worker Environmental Awareness Program training this quarter. To date, approximately 59 Project personnel have received the required worker environmental awareness education.

ENVIRONMENTAL COMPLIANCE SUMMARY

The following subsections provide an assessment of environmental resources and a summary of MM and APM implementation during the quarter ending on March 31, 2026.

Air Quality

Water trucks applied water to the work areas and dirt access roads, as needed, to control fugitive dust, and haul trucks maintained adequate freeboard or were covered in accordance with APM AIR-02. Vehicles on the Project's unpaved access roads were observed maintaining speeds of 15 miles per hour or less in accordance with APM AIR-02 and APM BIO-11. One water truck used on site during this reporting period had an engine that only met the Environmental Protection Agency's Tier 3 Emissions Standards. However, at least 75 percent of the diesel off-road construction equipment rated between 100 to 750 horsepower used during the reporting period met Tier 4 Emissions Standards. A list of the Project's off-road diesel construction equipment and usage is being maintained to track compliance with MM AQ-1.

Biological Resources

Authorized biologists surveyed all work areas for special-status plant and wildlife species prior to the commencement of construction in accordance with MM BIO-2, MM BIO-3, MM BIO-5, MM BIO-6, MM BIO-8, MM BIO-9, APM BIO-4, APM BIO-7, APM BIO-9, APM BIO-18, and APM BIO-20. Dann Chesmore (Insignia, EI) was present to monitor the Project's construction activities at each work area where initial ground disturbance and vegetation-removal activities occurred to ensure proper implementation of all biological measures in accordance with the MMCRP and applicable plans and permits. Equipment arriving on site was inspected for weeds and soil prior to entering the site in compliance with APM BIO-5.

Common species, such as northern Pacific rattle snake and San Joaquin pocket mouse, were safely relocated from the Project site during the quarter.

On Thursday, March 26, a pair of house finches were observed bringing nesting material into a break light fixture of a water truck. Dann Chesmore (Insignia, EI), contacted Mark Oates (Insignia, Senior Project Biologist), who cleared crews to dismantle any stick or grass inside the cavity since no eggs or young were present. A minimal amount of material was removed. Dann

Chesmore (Insignia, EI) stuffed the cavity with plastic garbage bags to prevent further nesting activities.

No active avian nests or special-status species were observed during the reporting period.

Cultural and Paleontological Resources

Establishment of archaeological Environmentally Sensitive Areas or archaeological monitoring in accordance with MM CR-3 were not required during this reporting period because no unique archaeological or historical resources as defined by California Environmental Quality Act Guidelines Section 15064.5 were recorded within the substation site or associated access roads during pre-construction cultural surveys. No potential cultural or paleontological resources were observed during this reporting period.

Fire and Fuels Management

All construction activities, patrols, and trainings were conducted in accordance with the Project's Construction Fire Prevention Plan in accordance with APM FIRE-1. Fire-fighting equipment was on site and ready for use in the event of a fire.

Hazards and Hazardous Materials

All hazardous materials were stored in appropriate areas and quantities. A spill kit was stored in the northwest corner of the substation site for use if spills occurred. Fueling was conducted in appropriate areas with containment and spill materials consistent with the Spill Prevention, Control, and Countermeasure Plan. All vehicles were inspected for leaks.

The following four minor spills occurred during this reporting period:

- Approximately 3 fluid ounces of coolant on February 25, 2026
- Approximately 3 fluid ounces of hydraulic fluid on February 26, 2026
- Approximately 3 fluid ounces of hydraulic fluid on March 9, 2026
- Approximately 3 fluid ounces of diesel on March 16, 2026

All spills were properly cleaned up and disposed of in accordance with state and local regulations.

Hydrology and Water Quality

BMPs were maintained for sediment and erosion control in accordance with the Project's Storm Water Pollution Prevention Plan (SWPPP). Additionally, all waste was collected and removed from the Project area daily, stockpiles were placed in approved areas and appropriately protected, and paved public roads with Project access were free of sediment tracking and particulate matter from Project traffic, as required by the Project's SWPPP.

Table 1: Construction Activity Completion Status

Construction Activity	Anticipated Completion Date
Manning Substation	
<i>Construction Mobilization</i>	<i>Complete</i>
<i>Substation Site Preparation</i>	<i>April 2026</i>
<i>Substation Foundation Work</i>	<i>November 2026</i>
<i>Enclosure Installation</i>	<i>September 2027</i>
<i>Transformers Installation</i>	<i>December 2027</i>
<i>Fixed Series Capacitor Installation</i>	<i>May 2027</i>
<i>Yard Equipment Installation</i>	<i>March 2027</i>
<i>Protection and Control Installation</i>	<i>April 2027</i>
<i>Transmission Line Construction</i>	<i>October 2027</i>
<i>Hot Commissioning</i>	<i>May 2028</i>
<i>Required In-Service Date</i>	<i>June 2028</i>

Noise

All work occurred during the allowable construction hours. Noise levels between 7:00 p.m. and 7:00 a.m. remained below 45 dBA at Sensitive Receptor 1 in accordance with MM N-1.

Traffic and Transportation

No issues related to traffic and transportation occurred during this reporting period.

Storm Water Pollution Prevention Plan Compliance

Brian Nemerow (Insignia, Project's Qualified SWPPP Developer) and Dann Chesmore (Insignia, Project's Qualified SWPPP Practitioner Delegate) conducted site inspections required by the SWPPP. The on-site SWPPP was updated with weekly inspection reports throughout the quarter. All BMPs were maintained in compliance with the Project's SWPPP.

NON-COMPLIANCES

Insignia uses the following Project compliance levels:

- In compliance
 - Activities comply with all permit conditions and mitigation measures, and there are no violations
- Deviation
 - Failing to comply with one aspect of a permit condition or mitigation measure with no potential for resource impact
- Non-compliance
 - Failing to comply with one or more aspects of a permit condition or mitigation measure, making the mitigation ineffective with potential for resource impact.

No non-compliances occurred during this reporting period. One deviation occurred during the reporting period when a CBI water truck drove outside of the approved work limits into the southwest corner of the substation near the water pump. The soil (covered in non-native grasses) was not disturbed, and no sensitive resources were impacted. Dann Chesmore (Insignia, EI) informed the driver that the area was outside of the work limits and not an approved area to drive. New access signs were installed to further limit access to the location. A re-training regarding approved access areas was conducted for the crew at the morning tailboard meeting following the deviation. Jeffrey Coward (Insignia, Environmental Compliance Project Manager), Chris Davis (EPCS, Construction Manager), Chris Bojorquez (CBI, Construction Manager), and Michael Pero (Ascent, CPUC's Third-Party Monitor) were informed of the deviation.

ATTACHMENT A: TENTATIVE CONSTRUCTION SCHEDULE FOR QUARTER TWO

Tentative Construction Schedule for Quarter Two

Anticipated Dates	Anticipated Activities
Manning Substation	
02/23/2026 - 4/24/2026	Site and Grading Work
05/11/2026 - 07/26/2026	Substation Wall Installation
05/13/2026 - 7/24/2026	Enclosure Foundations
06/18/2026 - 07/02/2026	Road Improvement
06/05/2026 - 08/03/2026	500 Kilovolt (kV) Below Grade Conduit
06/05/2026 - 07/20/2026	500 kV Below Grade Grounding
06/05/2026 - 09/22/2026	500 kV Pier Foundations
06/05/2026 - 06/07/2026	500 kV Slab Foundations

ATTACHMENT B: PHOTOGRAPHS

ATTACHMENT B: PHOTOGRAPHS



Photograph 1:
CBI installing
BMPs along
edge of
substation limit
of disturbance on
2/23/2026.



Photograph 2:
CBI water truck
spraying water
along access
road on
2/25/2026.



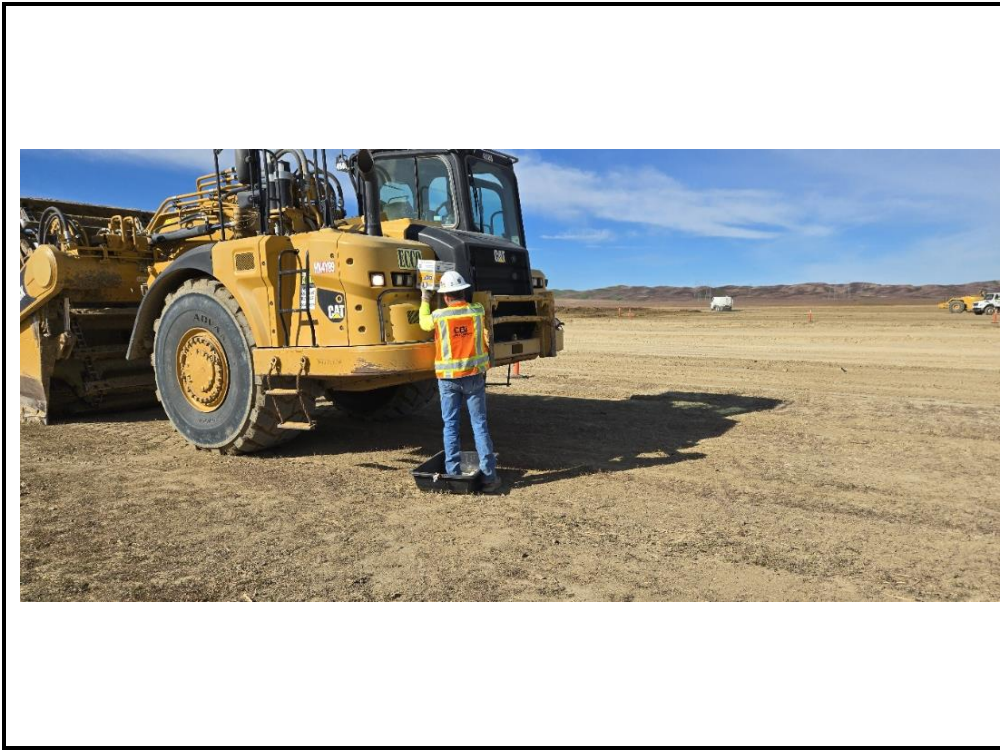
Photograph 3:
CBI crew
collecting
contaminated
soil from
hydraulic leak on
2/26/2026.



Photograph 4:
CBI crew using
scrapers to
stockpile topsoil
on 3/2/2026.



Photograph 5:
Vehicles in place
with secondary
containment at
end of day on
3/4/2026.



Photograph 6:
A CBI worker
pouring diesel
exhaust fluid into
the scraper with
secondary
containment
below to mitigate
spills on
3/13/2026.



Photograph 7:
Water truck
spraying water
on access roads
to mitigate
fugitive dust on
3/16/2026.



Photograph 8:
Drip pans placed
under parked
equipment on
3/18/2026.



Photograph 9:
Straw wattle
BMP in place
along access
road on
3/25/2026.