



1. The vegetation in Edgewood park includes serpentine grasslands near Tower 0/5.



2. Towers 0/7 to 0/9 include rolling hill with grassland and oak woodland vegetation.



3. Tower 4/24B in coastal chaparral. Note patches of eroding soil.



4. A rich stand of native grasses occurs in the serpentine grassland from Towers 4/26 to 4/34.



5. Grassland with planted introduced trees occurs from Towers 7/38 to 8/51 (nr. Black Mtn. Rd.)



6. The vegetation above Crystal Springs Reservoir consists of open grass in a wooded area.



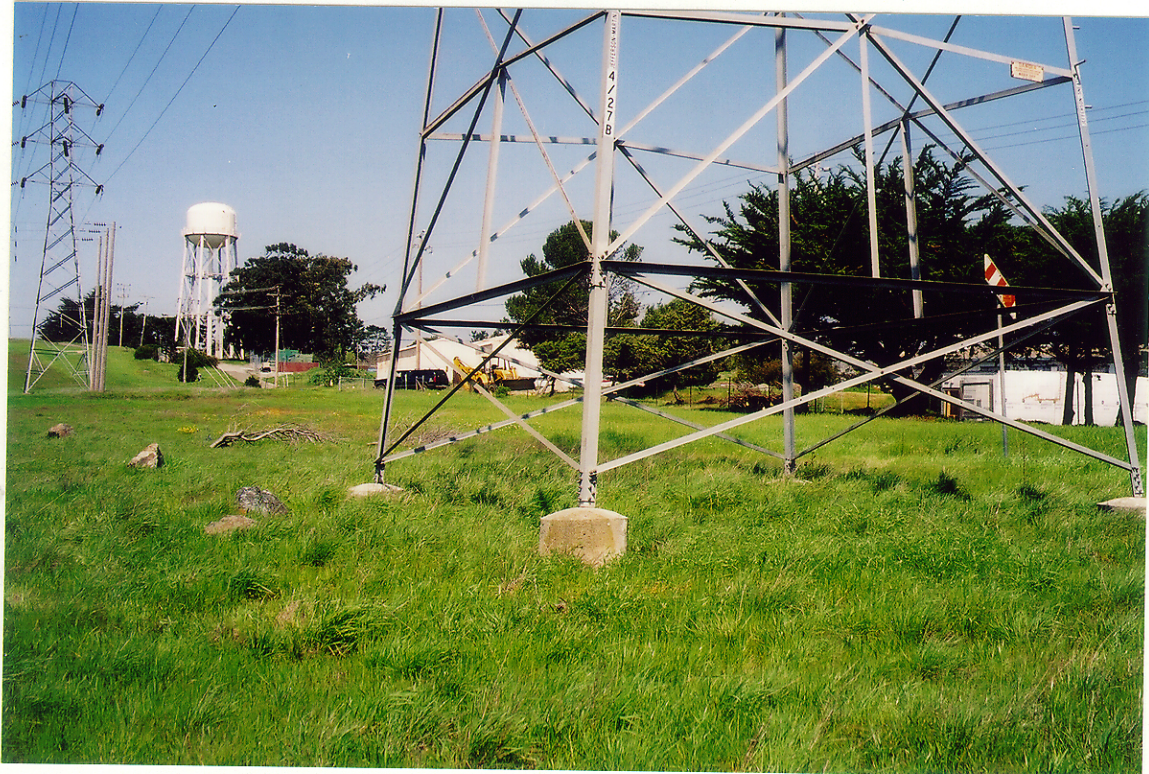
7. From Towers 14/89 to 14/94, the rights-of-way will be routinely mowed.



8. From Towers 14/95 to 14/98, the vegetation is essentially coastal chaparral.



9. A good remnant stand of native grasses occurs at Tower 1/9.



10. A good remnant stand of native grasses occurs at Tower 4/27B.



11. A good remnant stand of native grasses occurs at Tower 7/40.



12. A good remnant stand of native grass occurs at Tower 13/83.



13. A good remnant stand of native grasses occurs at Tower 13/85.



14. *Nassella cernua* commonly occurs throughout most of the project area.



15. *Nassella pulchra* commonly occurs throughout most of the project area.



16. *Danthonia californica* occurs in many parts of the project area.



17. *Festuca idahoensis* occurs mostly in the northern portion of the project area.



18. *Sisyrinchium bellum* occurs in many parts of the project area.



19. *Lupinus bicolor* is a wildflower growing in grassland areas .



20. *Layia platyglossa* occurs in the serpentine grasslands of the project area.



21. Noxious broom occurs throughout most of the project area .



22. Woody vegetation under the towers is unsafe and needs to be removed.



23. Shoreline erosion is occurring at Tower 13/83



24. Tower 4/24A has thin soil and poor vegetative growth.



25. Tower 13/85 has extensive noxious weeds and potential erosion problems.



26. Straw wattles and seeding results as seen at another project in Aptos, CA may be needed to control erosion at steep sites.