



HELICOPTER EXTERNAL LOAD OPERATION

CAP ☒NON CAP ☐

PAGE 1 OF 9

DATE: February 22, 2011

PROPOSED FLY DATE: February 28, 2011 through June 28, 2011

PROJECT NAME: Sycamore Canyon # 201102225	LOCATION: N 32 55' 55.96" W 117 00' 03.60"
LIFT DESCRIPTION, WEIGHTS, NUMBER OF LIFTS: Multiple Tower Structures and related construction equipment flown from Sycamore Fly yard in two directions- generally westbound, then east. Weights between 15-18000lbs. CAP due to road crossings, proximity to homes and proximity to Hwy 67 on the east end.	
OPERATORS SPECIFICS: Erickson Air Crane 3100 Willow Springs Road Central Point, Oregon 97502 Ph. #1-800-866-9431 Fax # 541-664-7613 Certificate #E8KL899H	CAP PREPARED BY: Brad Warren bwarren@ericksonaircrane.com #541-326-9448 Bill Neckels bneckels@ericksonaircrane.com #541-326-9448
	AIRCRAFT: SK 64 F N237AC S/N: 64095 Airworthiness: Transport
CUSTOMERS SPECIFICS: San Diego Gas & Electric 8315 Century Park Ct. CP 21G San Diego, California 92123 Contact: Mike Manry mmanry@semprautilities.com Ph. # 619-851-4387 Fax# 858-637-	FSDO SPECIFICS: FSDO 8525 Gibbs Drive Suite 120 San Diego, California 92123 Contact: Inspector James McNamara james.d.mcnamara@faa.gov Ph. #858-502-9882 Ext.285 Fax # 858-502-9885

EXAMINED & APPROVED

DATE FEB. 24, 2011

BY

FAA WPFSDO-09

SAN DIEGO, CA



HELICOPTER EXTERNAL LOAD OPERATION

CAP ☒

NON CAP ☐

PAGE 2 OF 9

DATE: February 22, 2011

PILOT DATA:

Certificates and Medicals on file for: Brad Warren, Bill Neckels, Max Evans, Mike Connor, Vern Sanders, Dale Weir, Vic Johnson, Travis Harrold, Fran Tebbe, Mike Life, Jamie Fallon.

LAW ENFORCEMENT AGENCIES CONTACTED:

Courtesy call to San Diego County Sheriff
Alpine Station
1347 Tavern Road
Alpine, CA 91901
Dispatch 858-565-5200
Accomplished daily by Sunrise Base.

HIGHWAY/ROAD DEPT. AGENCIES CONTACTED:

San Diego Public Works Permit for road crossings. PAR/SDGE responsibility.



HELICOPTER EXTERNAL LOAD OPERATION

CAP ☒

NON CAP ☐

PAGE 3 OF 9

DATE: February 22, 2011

PROCEDURES FOR CEASING OPERATIONS:

If a potential for a hazard should occur, the person(s) observing the hazard will notify the Erickson Air Crane (EAC) crew, the SDGE crew or the aircraft directly. Hazards could include, but are not limited to breach of the sterile area by any unauthorized persons and any other events that could cause danger to persons or property. The radioman will contact the pilot by radio and the operation will be suspended until the work environment is secured and safe.

STERILE AREA & FLIGHT CORRIDORS

All non-essential persons will not be allowed inside the Sterile area. All personnel involved with the lift will be briefed on procedures and safety information prior to the commencement of the lift operations. In the case of operations in the flight corridors, flight crew will self clear the flight path enroute. The Flight Corridors allow for sufficient operational area to see and avoid intrusions in this space. In the event of an intrusion of the border of this area, Corridor allows a minimum of 300 feet clearance in order to avoid the intrusion. If unable, operations cease until rectified.

FLIGHT NOTIFICATION TO FSDO:

Notification to the FSDO will be made to advise of specific flight operation dates within a range of dates specified in this plan. This can be an email or phone to call to advise that we will operate on a particular date. It is not necessary to receive a confirmation call back from the FSDO before operating. It is advisory in nature for the FSDO.

REQUIRED SAFETY EQUIPMENT:

Hard hats, chin straps, eye protection, gloves, high visibility clothing.

CAP ☒NON CAP ☐

PAGE 4 OF 9

DATE: February 22, 2011

ATTACHMENTS:

SYCAMORE FLY YARD PRE OPERATIONS ACTION ITEMS**1) County of San Diego**

The County's [Sycamore Canyon Preserve/Goodan Ranch Park](#) is open to the public every day. We have one TSAP sited approx. 100' to the north of CP-27 within this preserve, but it is in a fairly remote area. During our construction coordination meetings with the County, the only recreational area we identified that would need to closed temporarily during our work is the road/trail to CP-32-2 from Sycamore Park Drive. The County is aware of our helicopter activity in the area and did not request other closures, ENSURE HIKING TRAILS ARE VACANT ALONG FLIGHT CORRIDOR. Additional monitors with radios may be required to accomplish this.

- 2) Traffic controls along Hwy 67 near CP34 required.
- 3) Consider dust abatement near CP7
- 4) Approach CP7 from south edge of Flight Corridor below ETL.
- 5) Recon flight before Crane flights



HELICOPTER EXTERNAL LOAD OPERATION

CAP ☒

NON CAP ☐

PAGE 5 OF 9

DATE: February 22, 2011

ATTACHMENTS:

JOB DESCRIPTION	LOAD WT	LOAD & RTR WASH	ELEVATION	FLY DISTANCE
SYCAMORE	17,000	19,000	1500'	3.6nm
	PA & TEMP	DA	HP AVAIL	TQ AVAIL
	1500' & 38C	4400'	8120hp	84.0%
PERFORMANCE CALC		LIMIT CALC		
45800		45800		
FLIGHT PHASE	TIME		FUEL CALC	At 550 Gal/hr.
	In Minutes			
START & LIFTOFF	8		FUEL REQ.	1965
OUTBOUND LEG	4		Min. Fuel	1000
SET	15		TOTAL LBS. FUEL	2965
INBOUND LEG	3		TOTAL GAL. FUEL	293
LANDING	2		FUEL/SIDE	1483
TOTAL TIME	32			
WEIGHT AND BALANCE				
	WEIGHT	ARM	MOMENT	
A/C Config. WT	22976	333.9	7672146	
FWD PILOTS (2)	400	94.0	37600	
AFT PILOT	200	130.0	26000	
JUMPSEAT		108.5	0	
FUEL FWD	1483	280.8	416333	
FUEL AFT	1483	397.3	589063	
FUEL AUX		461.3	0	
TOTALS	26541	329.3	8741142	
ADD LOAD	19,000	333.0	6327000	
Grand Total	45541	330.9	15068142	
TOTAL GROSS	45541	COMPARE TO LIMIT CALC		45800
	Mode I	29800	Mode II	35600
SUMMARY	GO			
SIGNATURE	Brad Warren			

Longest fly distance weight and balance example for 38 degrees C.

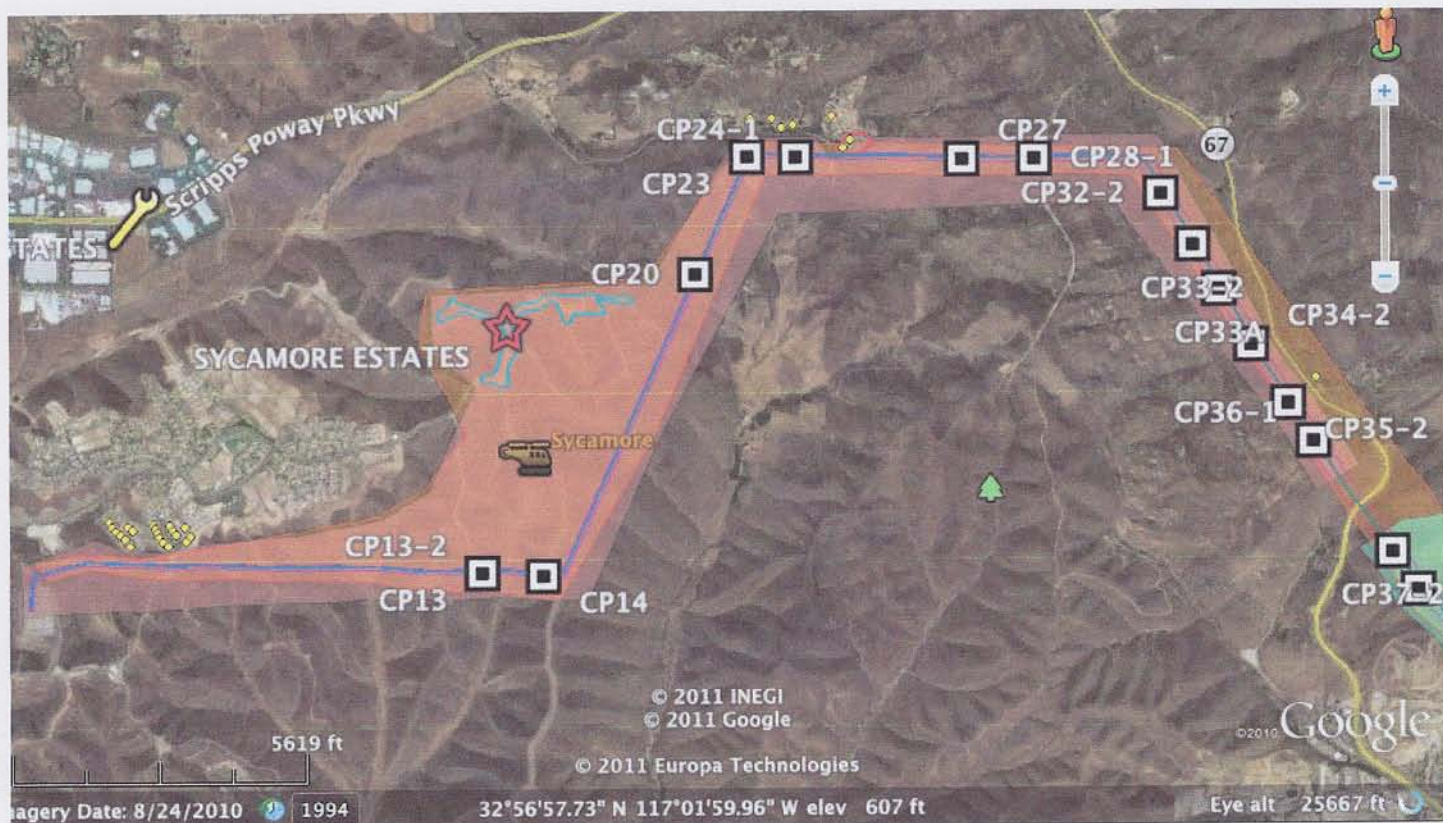
CAP ☒

NON CAP ☐

PAGE 6 OF 9

DATE: February 22, 2011

ATTACHMENTS:



Sycamore Flight Corridor Overview

CAP ☒

NON CAP ☐

PAGE 7 OF 9

DATE: February 22, 2011

ATTACHMENTS:



Sycamore Fly Yard Detail

HELICOPTER EXTERNAL LOAD OPERATION

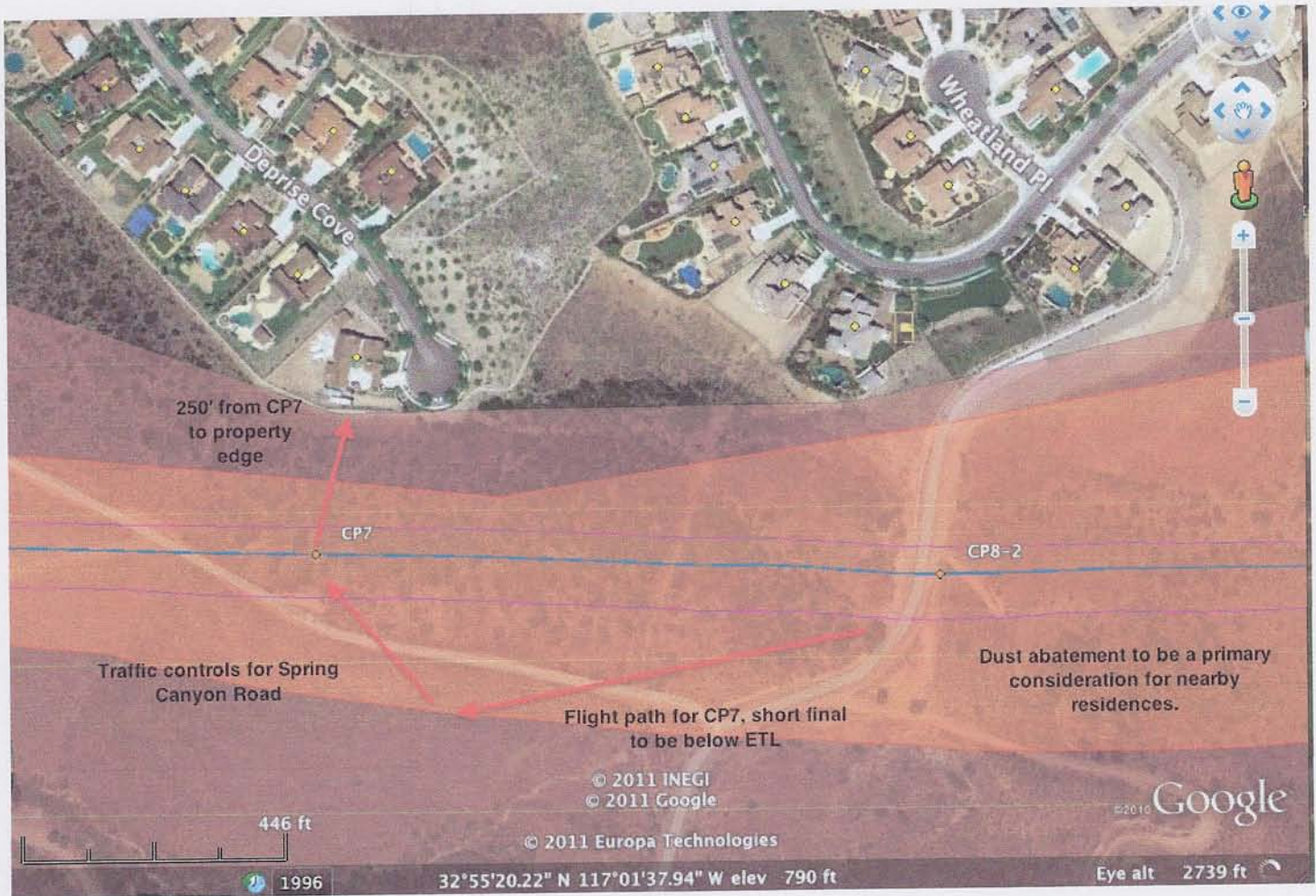
CAP ☒

NON CAP ☐

PAGE 8 OF 9

DATE: February 22, 2011

ATTACHMENTS:



CP 7 detail. This represents the closest tower to property. CP 7 will be approached from the south edge of the Flight Corridor and below ETL. Dust abatement to be considered. Road controls in effect for Spring Canyon Road.

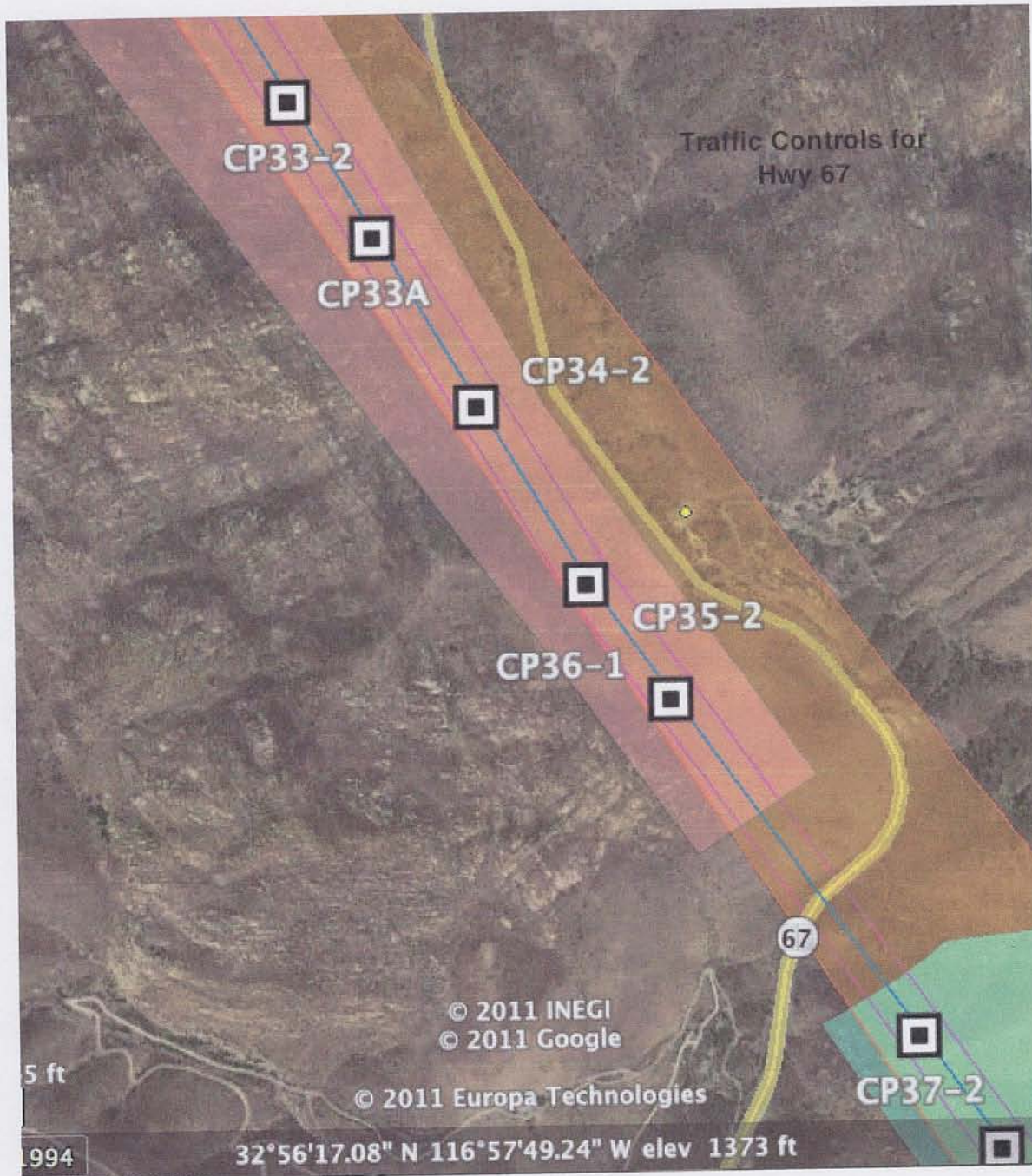
CAP ☒

NON CAP ☐

PAGE 9 OF 9

DATE: February 22, 2011

ATTACHMENTS:



Traffic controls in effect for proximity to Hwy 67.