

DEPARTMENT OF WATER RESOURCES  
1416 NINTH STREET, P.O. BOX 942836  
SACRAMENTO, CA 94236-0001  
(916) 653-5791



June 5, 2014

Mr. Billie Blanchard  
California Public Utilities Commission  
505 Van Ness Avenue  
San Francisco, CA 94104

Notice of Preparation for Environmental Impact Report, West Devers Transmission Upgrade Project, California Aqueduct, Santa Ana Pipeline, Approximate Milepost 424.94, Southern Field Division, SCH2014051041

Dear Mr. Blanchard:

Thank you for the opportunity to review and comment on the Notice of Preparation for West Devers Upgrade Project Draft Environmental Impact Report, as requested by California Public Utilities Commission. The notice by the applicant is to solicit information and agency input related to approximately 10 miles (Segment 2) of high voltage transmission lines, situated within San Bernardino County. The Applicant's improvements include: replacement of one 220 kV line, removal of 29 existing towers, and installation of 35 new towers within their existing right of way (ROW). The primary purpose for the upgrades are to provide a reliable power transmission system from Vista Substation to Devers Substation, associated with which supports large generator agreements and solar projects.

The proposed improvements could impact lands in close proximity to the California Aqueduct Santa Ana Pipeline, part of the Department of Water Resources' (DWR) ROW. The proposed project will cross DWR's ROW near Barton Road along West Devers at Milepost 1 located within the Community of Grand Terrace. Any improvements that encroach upon or impact DWR's ROW will require review and possible permitting from DWR prior to the start of any construction.

Please provide DWR with a copy of any subsequent environmental documentation when it becomes available for public review. Any future correspondence relating to this project should be sent to:

Leroy Ellinghouse, Chief  
SWP Encroachments Section  
Division of Operations and Maintenance  
Department of Water Resources  
1416 Ninth Street, Room 641-2  
Sacramento, California 95814

Mr. Billie Blanchard

June 5, 2014

Page three

In addition, please continue to keep DWR informed of any future actions with respect to the West Devers Upgrade Project.

If you have any questions, please contact Leroy Ellinghouse, Chief of DWR's SWP Encroachments Section, at (916) 653-7168 or Mike Anderson at (916) 653-6664.

Sincerely,



David M. Samson, Chief  
State Water Project Operations Support Office  
Division of Operations and Maintenance

cc: State Clearinghouse  
Office of Planning and Research  
1400 Tenth Street, Room 121  
Sacramento, California 95814





**MWD**

METROPOLITAN WATER DISTRICT OF SOUTHERN CALIFORNIA

Executive Office

June 11, 2014

**Via Federal Express**

Ms. Billie Blanchard  
235 Montgomery Street, Suite 935  
San Francisco, CA 94104-3002

Dear Ms. Blanchard:

Notice of Preparation for a  
Joint Environmental Impact Report/Environmental Impact Statement for the  
West of Devers Upgrade Project Proposed in Riverside and San Bernardino Counties

The Metropolitan Water District of Southern California (Metropolitan) has reviewed the Notice of Preparation (NOP) for the joint Environmental Impact Report/Environmental Impact Statement (Joint EIR/EIS) for the West of Devers Upgrade Project proposed by Southern California Edison. The proposed project consists of the removal and upgrade of existing 220 kV transmission lines in six segments, substation equipment upgrades at five substations, sub-transmission line upgrades at two substations, electric distribution line upgrades, and the installation of telecommunication lines. The project extends over 45 miles from the Vista Substation in the community of Grand Terrace to the Devers Substation near Palm Springs. The project traverses the communities of Grand Terrace, Colton, Loma Linda, Redlands, Calimesa, Beaumont, Banning, Morongo Tribal Lands, and Palm Springs in Riverside and San Bernardino Counties.

Metropolitan is a public agency and regional water wholesaler. It is comprised of 26 member public agencies serving more than 19 million people in six counties in Southern California. One of Metropolitan's major water supplies is the Colorado River conveyed via Metropolitan's Colorado River Aqueduct (CRA). The CRA consists of tunnels, open canals and buried pipelines. CRA-related facilities also include above and below ground reservoirs and aquifers, access and patrol roads, communication facilities, and residential housing sites. The CRA, which can deliver over 1.2 million acre-feet of water annually to the southern California coastal plain, extends 242 miles from the Colorado River to Lake Mathews. Metropolitan has five pumping plants located along the CRA, which consume approximately 2,400 gigawatt-hours of energy when the CRA is operating at full capacity.

In the project area, the CRA is a 16-foot cut and cover conduit. The CRA extends in a general east-west direction and is bisected by the proposed project near MP 38 and MP 42 (see attached

Ms. Blanchard

Page 2

June 11, 2014

map). Metropolitan also has fee property of varying widths through the same area. Based on a review of the proposed project boundaries as described in the NOP, the project has the potential to impact Metropolitan's CRA. In particular, the proposed project could interfere with Metropolitan's ongoing operation, maintenance and repair activities on the CRA, which require unrestricted and unobstructed access to these facilities. Accordingly, the Joint EIR/EIS must examine the potential impacts to Metropolitan's facilities and ensure that any such impacts are fully mitigated.

In order to avoid potential conflicts with Metropolitan's facilities and rights-of-way, we require that any design plans for any activity in the area of Metropolitan's pipelines or facilities be submitted for our review and written approval. Loading restrictions will be necessary in areas that cross the CRA. Approval of the project is contingent on Metropolitan's approval of design plans for portions of the proposed project that could impact its facilities. Any future design plans associated with this project should be submitted to the attention of Metropolitan's Substructures Team.

Detailed prints of drawings of Metropolitan's pipelines and rights-of-way may be obtained by calling Metropolitan's Substructures Information Line at (213) 217-6564. To assist the applicant in preparing plans that are compatible with Metropolitan's facilities and easements, we have enclosed a copy of the "Guidelines for Developments in the Area of Facilities, Fee Properties, and/or Easement of The Metropolitan Water District of Southern California." Please note that all submitted designs or plans must clearly identify Metropolitan's facilities and rights-of-way.

We appreciate the opportunity to provide input to your planning process and we look forward to receiving future documentation on this project. For further assistance, please contact Ms. Michelle Morrison at (213) 217-7906.

Very truly yours,



for

Deirdre West  
Manager, Environmental Planning Team

MM

J:\Environmental Planning&Compliance\Completed Jobs\June 2014\Job No. 2014051604\WestOffDevers.docx

Enclosures: Planning Guidelines and Map of Metropolitan Facilities in Project Vicinity  
MWD-Colorado River Aqueduct Map

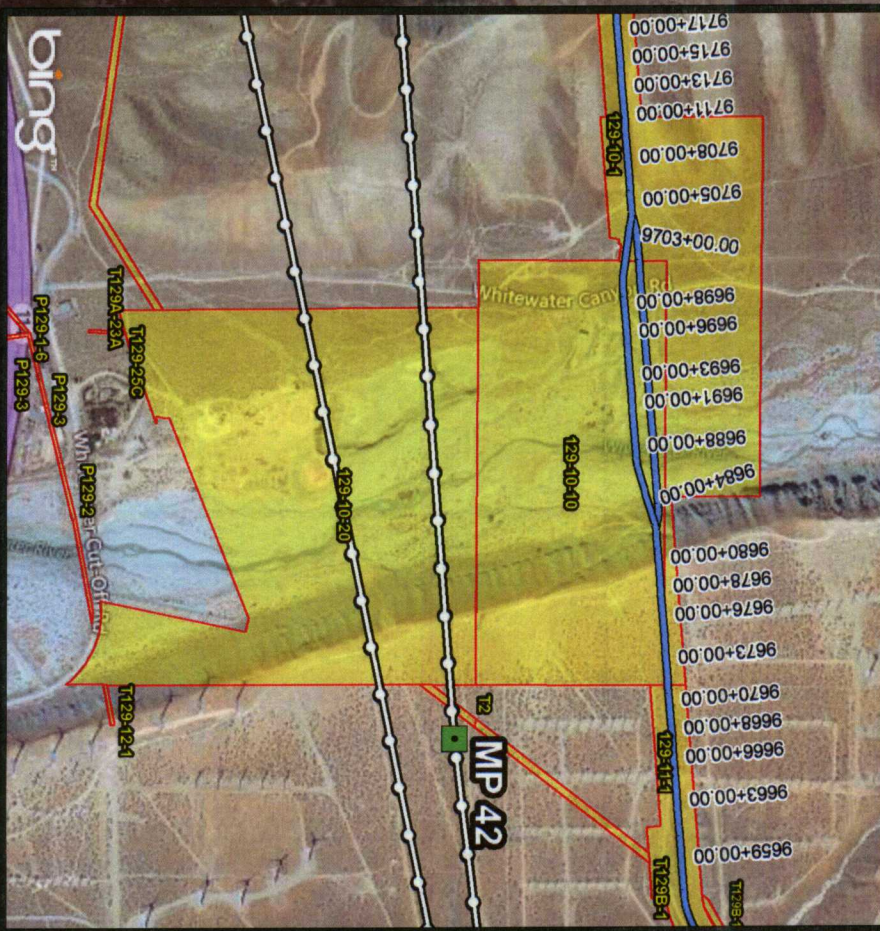
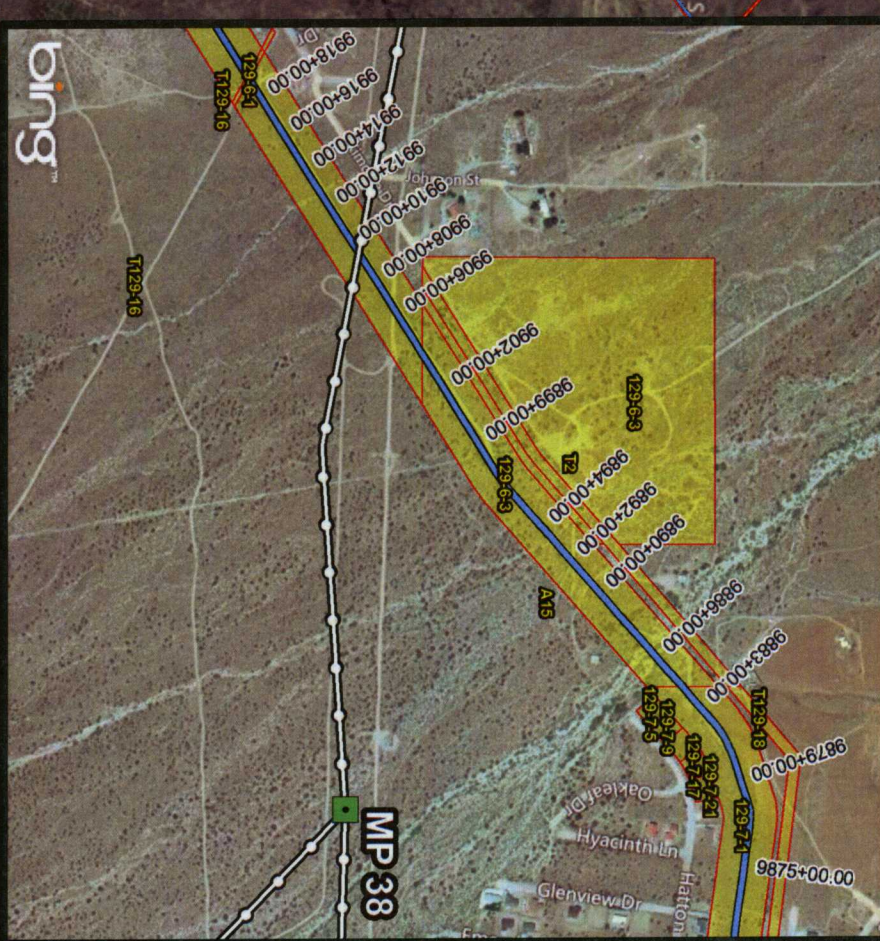




The Metropolitan Water District of Southern California  
Engineering Services Group

bing

Service Layer Credits: Image courtesy of USGS © 2014 Microsoft Corporation © 2012 Nokia © AND  
© Harris Corp. Earthstar Geographics LLC Earthstar Geographics SIO © 2011 Microsoft Corporation © 2013 Nokia © AND



THIS EXHIBIT IS TO BE USED FOR APPROXIMATE POSITIONING ONLY.  
IT IS NOT TO BE USED, NOR IS IT INTENDED TO BE USED FOR ENGINEERING,  
RECORDING OR LITIGATION PURPOSES. NO WARRANTY OF ACCURACY  
IS IMPLIED OR GUARANTEED.  
SCE FEATURES WERE DIGITIZED FROM A PDF. MP & ARE ONLY  
REPRESENTATIONAL, NOT AN ACCURATE DEPICTION.

## Colorado River Aqueduct SCE West of Devers Upgrade Project Crossing

0 0.5 1 2  
Miles





Guidelines for Developments in the  
Area of Facilities, Fee Properties, and/or Easements  
of The Metropolitan Water District of Southern California

1. Introduction

a. The following general guidelines should be followed for the design of proposed facilities and developments in the area of Metropolitan's facilities, fee properties, and/or easements.

b. We require that 3 copies of your tentative and final record maps, grading, paving, street improvement, landscape, storm drain, and utility plans be submitted for our review and written approval as they pertain to Metropolitan's facilities, fee properties and/or easements, prior to the commencement of any construction work.

2. Plans, Parcel and Tract Maps

The following are Metropolitan's requirements for the identification of its facilities, fee properties, and/or easements on your plans, parcel maps and tract maps:

a. Metropolitan's fee properties and/or easements and its pipelines and other facilities must be fully shown and identified as Metropolitan's on all applicable plans.

b. Metropolitan's fee properties and/or easements must be shown and identified as Metropolitan's with the official recording data on all applicable parcel and tract maps.

c. Metropolitan's fee properties and/or easements and existing survey monuments must be dimensionally tied to the parcel or tract boundaries.

d. Metropolitan's records of surveys must be referenced on the parcel and tract maps.



3. Maintenance of Access Along Metropolitan's Rights-of-Way

a. Proposed cut or fill slopes exceeding 10 percent are normally not allowed within Metropolitan's fee properties or easements. This is required to facilitate the use of construction and maintenance equipment, and provide access to its aboveground and belowground facilities.

b. We require that 16-foot-wide commercial-type driveway approaches be constructed on both sides of all streets crossing Metropolitan's rights-of-way. Openings are required in any median island. Access ramps, if necessary, must be at least 16-foot-wide. Grades of ramps are normally not allowed to exceed 10 percent. If the slope of an access ramp must exceed 10 percent due to the topography, the ramp must be paved. We require a 40-foot-long level area on the driveway approach to access ramps where the ramp meets the street. At Metropolitan's fee properties, we may require fences and gates.

c. The terms of Metropolitan's permanent easement deeds normally preclude the building or maintenance of structures of any nature or kind within its easements, to ensure safety and avoid interference with operation and maintenance of Metropolitan's pipelines or other facilities. Metropolitan must have vehicular access along the easements at all times for inspection, patrolling, and for maintenance of the pipelines and other facilities on a routine basis. We require a 20-foot-wide clear zone around all above-ground facilities for this routine access. This clear zone should slope away from our facility on a grade not to exceed 2 percent. We must also have access along the easements with construction equipment. An example of this is shown on Figure 1.

d. The footings of any proposed buildings adjacent to Metropolitan's fee properties and/or easements must not encroach into the fee property or easement or impose additional loading on Metropolitan's pipelines or other facilities therein. A typical situation is shown on Figure 2. Prints of the detail plans of the footings for any building or structure adjacent to the fee property or easement must be submitted for our review and written approval as they pertain to the pipeline or other facilities therein. Also, roof eaves of buildings adjacent to the easement or fee property must not overhang into the fee property or easement area.



e. Metropolitan's pipelines and other facilities, e.g. structures, manholes, equipment, survey monuments, etc. within its fee properties and/or easements must be protected from damage by the easement holder on Metropolitan's property or the property owner where Metropolitan has an easement, at no expense to Metropolitan. If the facility is a cathodic protection station it shall be located prior to any grading or excavation. The exact location, description and way of protection shall be shown on the related plans for the easement area.

4. Easements on Metropolitan's Property

a. We encourage the use of Metropolitan's fee rights-of-way by governmental agencies for public street and utility purposes, provided that such use does not interfere with Metropolitan's use of the property, the entire width of the property is accepted into the agency's public street system and fair market value is paid for such use of the right-of-way.

b. Please contact the Director of Metropolitan's Right of Way and Land Division, telephone (213) 250-6302, concerning easements for landscaping, street, storm drain, sewer, water or other public facilities proposed within Metropolitan's fee properties. A map and legal description of the requested easements must be submitted. Also, written evidence must be submitted that shows the city or county will accept the easement for the specific purposes into its public system. The grant of the easement will be subject to Metropolitan's rights to use its land for water pipelines and related purposes to the same extent as if such grant had not been made. There will be a charge for the easement. Please note that, if entry is required on the property prior to issuance of the easement, an entry permit must be obtained. There will also be a charge for the entry permit.

5. Landscaping

Metropolitan's landscape guidelines for its fee properties and/or easements are as follows:

a. A green belt may be allowed within Metropolitan's fee property or easement.

b. All landscape plans shall show the location and size of Metropolitan's fee property and/or easement and the location and size of Metropolitan's pipeline or other facilities therein.



c. Absolutely no trees will be allowed within 15 feet of the centerline of Metropolitan's existing or future pipelines and facilities.

d. Deep-rooted trees are prohibited within Metropolitan's fee properties and/or easements. Shallow-rooted trees are the only trees allowed. The shallow-rooted trees will not be permitted any closer than 15 feet from the centerline of the pipeline, and such trees shall not be taller than 25 feet with a root spread no greater than 20 feet in diameter at maturity. Shrubs, bushes, vines, and ground cover are permitted, but larger shrubs and bushes should not be planted directly over our pipelines. Turf is acceptable. We require submittal of landscape plans for Metropolitan's prior review and written approval. (See Figure 3).

e. The landscape plans must contain provisions for Metropolitan's vehicular access at all times along its rights-of-way to its pipelines or facilities therein. Gates capable of accepting Metropolitan's locks are required in any fences across its rights-of-way. Also, any walks or drainage facilities across its access route must be constructed to AASHTO H-20 loading standards.

f. Rights to landscape any of Metropolitan's fee properties must be acquired from its Right of Way and Land Division. Appropriate entry permits must be obtained prior to any entry on its property. There will be a charge for any entry permit or easements required.

6. Fencing

Metropolitan requires that perimeter fencing of its fee properties and facilities be constructed of universal chain link, 6 feet in height and topped with 3 strands of barbed wire angled upward and outward at a 45 degree angle or an approved equal for a total fence height of 7 feet. Suitable substitute fencing may be considered by Metropolitan. (Please see Figure 5 for details).

7. Utilities in Metropolitan's Fee Properties and/or Easements or Adjacent to Its Pipeline in Public Streets

Metropolitan's policy for the alignment of utilities permitted within its fee properties and/or easements and street rights-of-way is as follows:



a. Permanent structures, including catch basins, manholes, power poles, telephone riser boxes, etc., shall not be located within its fee properties and/or easements.

b. We request that permanent utility structures within public streets, in which Metropolitan's facilities are constructed under the Metropolitan Water District Act, be placed as far from our pipeline as possible, but not closer than 5 feet from the outside of our pipeline.

c. The installation of utilities over or under Metropolitan's pipeline(s) must be in accordance with the requirements shown on the enclosed prints of Drawings Nos. C-11632 and C-9547. Whenever possible we request a minimum of one foot clearance between Metropolitan's pipe and your facility. Temporary support of Metropolitan's pipe may also be required at undercrossings of its pipe in an open trench. The temporary support plans must be reviewed and approved by Metropolitan.

d. Lateral utility crossings of Metropolitan's pipelines must be as perpendicular to its pipeline alignment as practical. Prior to any excavation our pipeline shall be located manually and any excavation within two feet of our pipeline must be done by hand. This shall be noted on the appropriate drawings.

e. Utilities constructed longitudinally within Metropolitan's rights-of-way must be located outside the theoretical trench prism for uncovering its pipeline and must be located parallel to and as close to its rights-of-way lines as practical.

f. When piping is jacked or installed in jacked casing or tunnel under Metropolitan's pipe, there must be at least two feet of vertical clearance between the bottom of Metropolitan's pipe and the top of the jacked pipe, jacked casing or tunnel. We also require that detail drawings of the shoring for the jacking or tunneling pits be submitted for our review and approval. Provisions must be made to grout any voids around the exterior of the jacked pipe, jacked casing or tunnel. If the piping is installed in a jacked casing or tunnel the annular space between the piping and the jacked casing or tunnel must be filled with grout.



**g. Overhead electrical and telephone line requirements:**

1) Conductor clearances are to conform to the California State Public Utilities Commission, General Order 95, for Overhead Electrical Line Construction or at a greater clearance if required by Metropolitan. Under no circumstances shall clearance be less than 35 feet.

2) A marker must be attached to the power pole showing the ground clearance and line voltage, to help prevent damage to your facilities during maintenance or other work being done in the area.

3) Line clearance over Metropolitan's fee properties and/or easements shall be shown on the drawing to indicate the lowest point of the line under the most adverse conditions including consideration of sag, wind load, temperature change, and support type. We require that overhead lines be located at least 30 feet laterally away from all above-ground structures on the pipelines.

4) When underground electrical conduits, 120 volts or greater, are installed within Metropolitan's fee property and/or easement, the conduits must be incased in a minimum of three inches of red concrete. Where possible, above ground warning signs must also be placed at the right-of-way lines where the conduits enter and exit the right-of-way.

**h. The construction of sewerlines in Metropolitan's fee properties and/or easements must conform to the California Department of Health Services Criteria for the Separation of Water Mains and Sanitary Services and the local City or County Health Code Ordinance as it relates to installation of sewers in the vicinity of pressure waterlines. The construction of sewerlines should also conform to these standards in street rights-of-way.**

**i. Cross sections shall be provided for all pipeline crossings showing Metropolitan's fee property and/or easement limits and the location of our pipeline(s). The exact locations of the crossing pipelines and their elevations shall be marked on as-built drawings for our information.**



j. Potholing of Metropolitan's pipeline is required if the vertical clearance between a utility and Metropolitan's pipeline is indicated on the plan to be one foot or less. If the indicated clearance is between one and two feet, potholing is suggested. Metropolitan will provide a representative to assist others in locating and identifying its pipeline. Two-working days notice is requested.

k. Adequate shoring and bracing is required for the full depth of the trench when the excavation encroaches within the zone shown on Figure 4.

l. The location of utilities within Metropolitan's fee property and/or easement shall be plainly marked to help prevent damage during maintenance or other work done in the area. Detectable tape over buried utilities should be placed a minimum of 12 inches above the utility and shall conform to the following requirements:

1) Water pipeline: A two-inch blue warning tape shall be imprinted with:

"CAUTION BURIED WATER PIPELINE"

2) Gas, oil, or chemical pipeline: A two-inch yellow warning tape shall be imprinted with:

"CAUTION BURIED \_\_\_\_\_ PIPELINE"

3) Sewer or storm drain pipeline: A two-inch green warning tape shall be imprinted with:

"CAUTION BURIED \_\_\_\_\_ PIPELINE"

4) Electric, street lighting, or traffic signals conduit: A two-inch red warning tape shall be imprinted with:

"CAUTION BURIED \_\_\_\_\_ CONDUIT"

5) Telephone, or television conduit: A two-inch orange warning tape shall be imprinted with:

"CAUTION BURIED \_\_\_\_\_ CONDUIT"



m. Cathodic Protection requirements:

1) If there is a cathodic protection station for Metropolitan's pipeline in the area of the proposed work, it shall be located prior to any grading or excavation. The exact location, description and manner of protection shall be shown on all applicable plans. Please contact Metropolitan's Corrosion Engineering Section, located at Metropolitan's F. E. Weymouth Softening and Filtration Plant, 700 North Moreno Avenue, La Verne, California 91750, telephone (714) 593-7474, for the locations of Metropolitan's cathodic protection stations.

2) If an induced-current cathodic protection system is to be installed on any pipeline crossing Metropolitan's pipeline, please contact Mr. Wayne E. Risner at (714) 593-7474 or (213) 250-5085. He will review the proposed system and determine if any conflicts will arise with the existing cathodic protection systems installed by Metropolitan.

3) Within Metropolitan's rights-of-way, pipelines and carrier pipes (casings) shall be coated with an approved protective coating to conform to Metropolitan's requirements, and shall be maintained in a neat and orderly condition as directed by Metropolitan. The application and monitoring of cathodic protection on the pipeline and casing shall conform to Title 49 of the Code of Federal Regulations, Part 195.

4) If a steel carrier pipe (casing) is used:

(a) Cathodic protection shall be provided by use of a sacrificial magnesium anode (a sketch showing the cathodic protection details can be provided for the designers information).

(b) The steel carrier pipe shall be protected with a coal tar enamel coating inside and out in accordance with AWWA C203 specification.

n. All trenches shall be excavated to comply with the CAL/OSHA Construction Safety Orders, Article 6, beginning with Sections 1539 through 1547. Trench backfill shall be placed in 8-inch lifts and shall be compacted to 95 percent relative compaction (ASTM D698) across roadways and through protective dikes. Trench backfill elsewhere will be compacted to 90 percent relative compaction (ASTM D698).



o. Control cables connected with the operation of Metropolitan's system are buried within streets, its fee properties and/or easements. The locations and elevations of these cables shall be shown on the drawings. The drawings shall note that prior to any excavation in the area, the control cables shall be located and measures shall be taken by the contractor to protect the cables in place.

p. Metropolitan is a member of Underground Service Alert (USA). The contractor (excavator) shall contact USA at 1-800-422-4133 (Southern California) at least 48 hours prior to starting any excavation work. The contractor will be liable for any damage to Metropolitan's facilities as a result of the construction.

8. Paramount Right

Facilities constructed within Metropolitan's fee properties and/or easements shall be subject to the paramount right of Metropolitan to use its fee properties and/or easements for the purpose for which they were acquired. If at any time Metropolitan or its assigns should, in the exercise of their rights, find it necessary to remove any of the facilities from the fee properties and/or easements, such removal and replacement shall be at the expense of the owner of the facility.

9. Modification of Metropolitan's Facilities

When a manhole or other of Metropolitan's facilities must be modified to accommodate your construction or reconstruction, Metropolitan will modify the facilities with its forces. This should be noted on the construction plans. The estimated cost to perform this modification will be given to you and we will require a deposit for this amount before the work is performed. Once the deposit is received, we will schedule the work. Our forces will coordinate the work with your contractor. Our final billing will be based on actual cost incurred, and will include materials, construction, engineering plan review, inspection, and administrative overhead charges calculated in accordance with Metropolitan's standard accounting practices. If the cost is less than the deposit, a refund will be made; however, if the cost exceeds the deposit, an invoice will be forwarded for payment of the additional amount.



10. Drainage

a. Residential or commercial development typically increases and concentrates the peak storm water runoff as well as the total yearly storm runoff from an area, thereby increasing the requirements for storm drain facilities downstream of the development. Also, throughout the year water from landscape irrigation, car washing, and other outdoor domestic water uses flows into the storm drainage system resulting in weed abatement, insect infestation, obstructed access and other problems. Therefore, it is Metropolitan's usual practice not to approve plans that show discharge of drainage from developments onto its fee properties and/or easements.

b. If water must be carried across or discharged onto Metropolitan's fee properties and/or easements, Metropolitan will insist that plans for development provide that it be carried by closed conduit or lined open channel approved in writing by Metropolitan. Also the drainage facilities must be maintained by others, e.g., city, county, homeowners association, etc. If the development proposes changes to existing drainage features, then the developer shall make provisions to provide for replacement and these changes must be approved by Metropolitan in writing.

11. Construction Coordination

During construction, Metropolitan's field representative will make periodic inspections. We request that a stipulation be added to the plans or specifications for notification of Mr. \_\_\_\_\_ of Metropolitan's Operations Services Branch, telephone (213) 250-\_\_\_\_\_, at least two working days prior to any work in the vicinity of our facilities.

12. Pipeline Loading Restrictions

a. Metropolitan's pipelines and conduits vary in structural strength, and some are not adequate for AASHTO H-20 loading. Therefore, specific loads over the specific sections of pipe or conduit must be reviewed and approved by Metropolitan. However, Metropolitan's pipelines are typically adequate for AASHTO H-20 loading provided that the cover over the pipeline is not less than four feet or the cover is not substantially increased. If the temporary cover over the pipeline during construction is between three and four feet, equipment must be restricted to that which



imposes loads no greater than AASHTO H-10. If the cover is between two and three feet, equipment must be restricted to that of a Caterpillar D-4 tract-type tractor. If the cover is less than two feet, only hand equipment may be used. Also, if the contractor plans to use any equipment over Metropolitan's pipeline which will impose loads greater than AASHTO H-20, it will be necessary to submit the specifications of such equipment for our review and approval at least one week prior to its use. More restrictive requirements may apply to the loading guideline over the San Diego Pipelines 1 and 2, portions of the Orange County Feeder, and the Colorado River Aqueduct. Please contact us for loading restrictions on all of Metropolitan's pipelines and conduits.

b. The existing cover over the pipeline shall be maintained unless Metropolitan determines that proposed changes do not pose a hazard to the integrity of the pipeline or an impediment to its maintenance.

13. Blasting

a. At least 20 days prior to the start of any drilling for rock excavation blasting, or any blasting, in the vicinity of Metropolitan's facilities, a two-part preliminary conceptual plan shall be submitted to Metropolitan as follows:

b. Part 1 of the conceptual plan shall include a complete summary of proposed transportation, handling, storage, and use of explosions.

c. Part 2 shall include the proposed general concept for blasting, including controlled blasting techniques and controls of noise, fly rock, airblast, and ground vibration.

14. CEQA Requirements

a. When Environmental Documents Have Not Been Prepared

1) Regulations implementing the California Environmental Quality Act (CEQA) require that Metropolitan have an opportunity to consult with the agency or consultants preparing any environmental documentation. We are required to review and consider the environmental effects of the project as shown in the Negative Declaration or Environmental Impact Report (EIR) prepared for your project before committing Metropolitan to approve your request.



2) In order to ensure compliance with the regulations implementing CEQA where Metropolitan is not the Lead Agency, the following minimum procedures to ensure compliance with the Act have been established:

a) Metropolitan shall be timely advised of any determination that a Categorical Exemption applies to the project. The Lead Agency is to advise Metropolitan that it and other agencies participating in the project have complied with the requirements of CEQA prior to Metropolitan's participation.

b) Metropolitan is to be consulted during the preparation of the Negative Declaration or EIR.

c) Metropolitan is to review and submit any necessary comments on the Negative Declaration or draft EIR.

d) Metropolitan is to be indemnified for any costs or liability arising out of any violation of any laws or regulations including but not limited to the California Environmental Quality Act and its implementing regulations.

**b. When Environmental Documents Have Been Prepared**

If environmental documents have been prepared for your project, please furnish us a copy for our review and files in a timely manner so that we may have sufficient time to review and comment. The following steps must also be accomplished:

1) The Lead Agency is to advise Metropolitan that it and other agencies participating in the project have complied with the requirements of CEQA prior to Metropolitan's participation.

2) You must agree to indemnify Metropolitan, its officers, engineers, and agents for any costs or liability arising out of any violation of any laws or regulations including but not limited to the California Environmental Quality Act and its implementing regulations.

**15. Metropolitan's Plan-Review Cost**

a. An engineering review of your proposed facilities and developments and the preparation of a letter response



giving Metropolitan's comments, requirements and/or approval that will require 8 man-hours or less of effort is typically performed at no cost to the developer, unless a facility must be modified where Metropolitan has superior rights. If an engineering review and letter response requires more than 8 man-hours of effort by Metropolitan to determine if the proposed facility or development is compatible with its facilities, or if modifications to Metropolitan's manhole(s) or other facilities will be required, then all of Metropolitan's costs associated with the project must be paid by the developer, unless the developer has superior rights.

b. A deposit of funds will be required from the developer before Metropolitan can begin its detailed engineering plan review that will exceed 8 hours. The amount of the required deposit will be determined after a cursory review of the plans for the proposed development.

c. Metropolitan's final billing will be based on actual cost incurred, and will include engineering plan review, inspection, materials, construction, and administrative overhead charges calculated in accordance with Metropolitan's standard accounting practices. If the cost is less than the deposit, a refund will be made; however, if the cost exceeds the deposit, an invoice will be forwarded for payment of the additional amount. Additional deposits may be required if the cost of Metropolitan's review exceeds the amount of the initial deposit.

16. Caution

We advise you that Metropolitan's plan reviews and responses are based upon information available to Metropolitan which was prepared by or on behalf of Metropolitan for general record purposes only. Such information may not be sufficiently detailed or accurate for your purposes. No warranty of any kind, either express or implied, is attached to the information therein conveyed as to its accuracy, and no inference should be drawn from Metropolitan's failure to comment on any aspect of your project. You are therefore cautioned to make such surveys and other field investigations as you may deem prudent to assure yourself that any plans for your project are correct.



17. Additional Information

Should you require additional information, please contact:

Civil Engineering Substructures Section  
Metropolitan Water District  
of Southern California  
P.O. Box 54153  
Los Angeles, California 90054-0153  
(213) 217-6000

JEH/MRW/lk

Rev. January 22, 1989

Encl.











Revised May 2006 by 06000 11 21 P. 06 09 0916

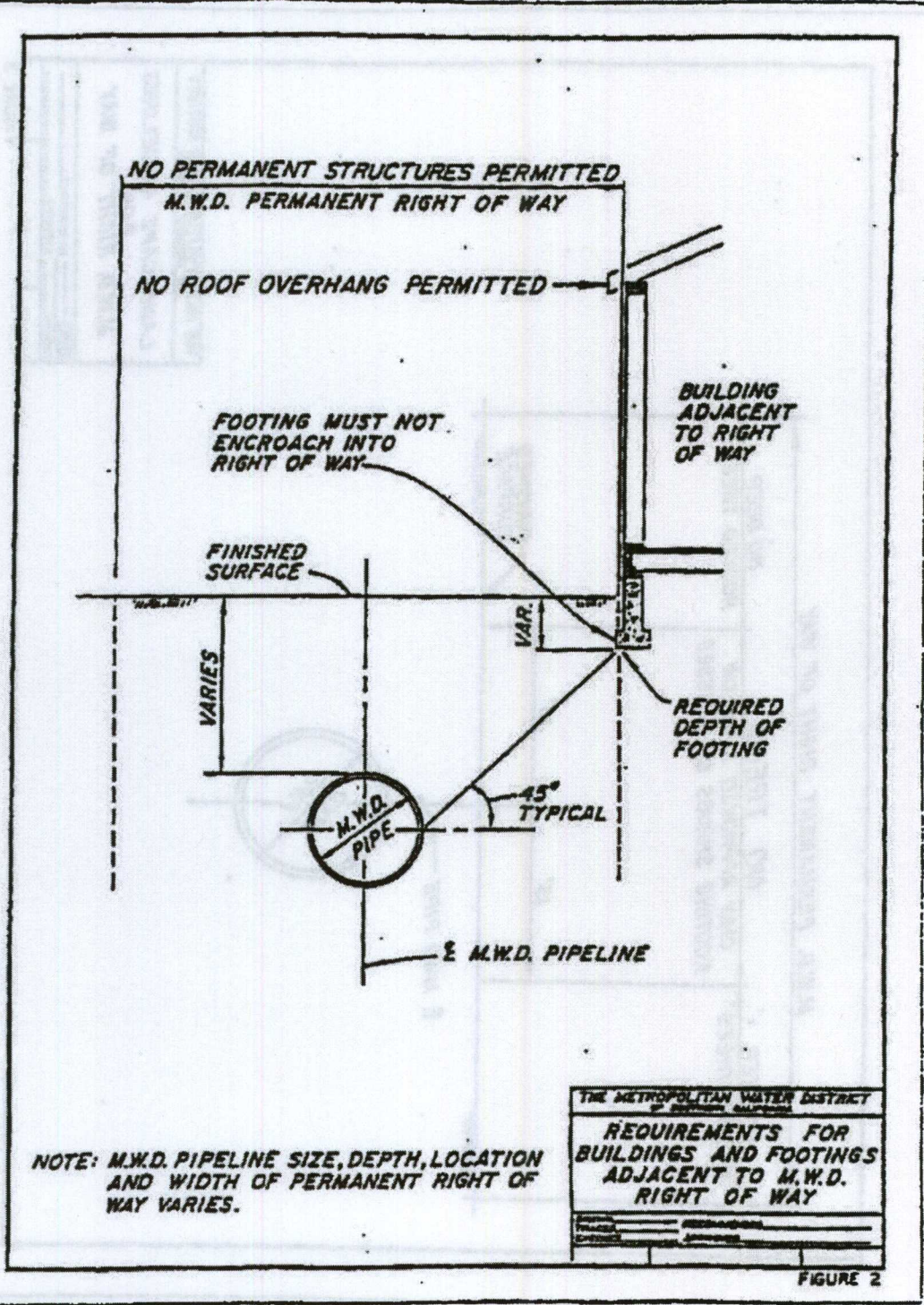


FIGURE 2



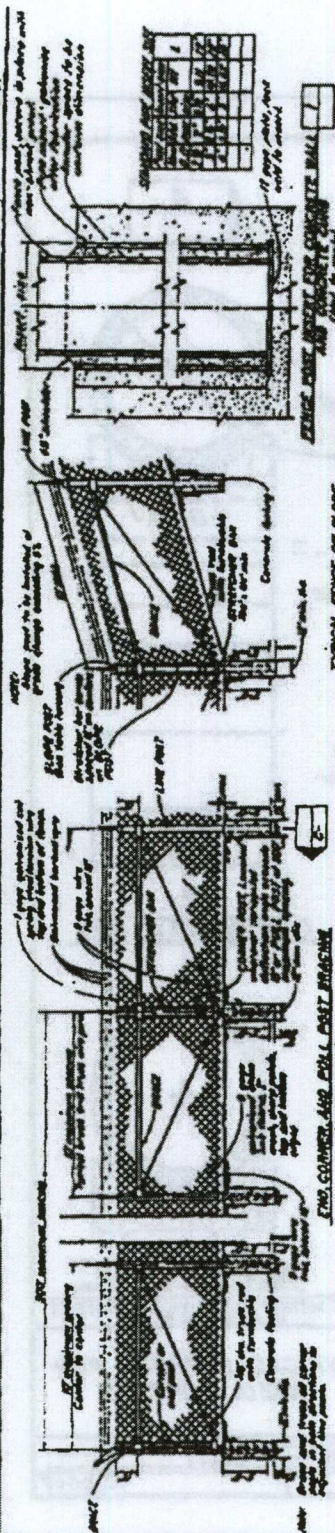


1500

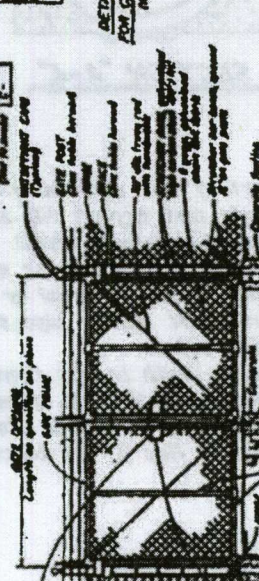
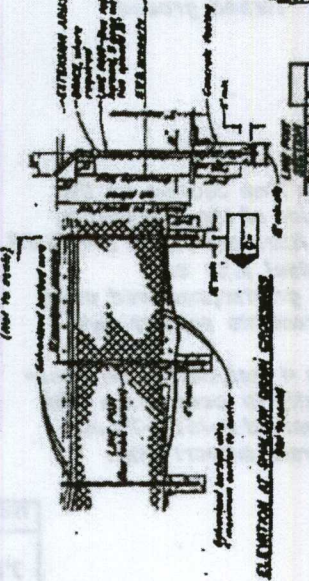
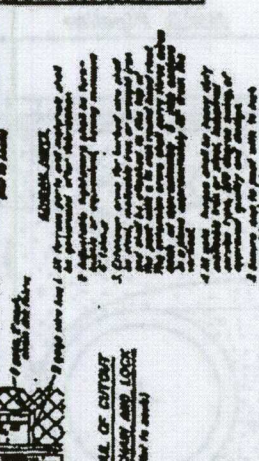
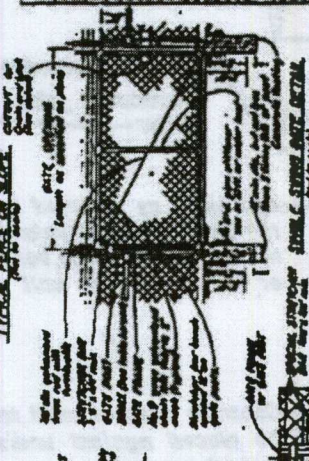
DETACHMENT-POST CLEARPOINT TOWN

\*\*\*\*\*Please use this number for information assistance only\*\*\*\*\*





Year	1900	1901	1902	1903	1904	1905	1906	1907	1908	1909	1910	1911	1912	1913	1914	1915	1916	1917	1918	1919	1920	1921	1922	1923	1924	1925	1926	1927	1928	1929	1930	1931	1932	1933	1934	1935	1936	1937	1938	1939	1940	1941	1942	1943	1944	1945	1946	1947	1948	1949	1950	1951	1952	1953	1954	1955	1956	1957	1958	1959	1960	1961	1962	1963	1964	1965	1966	1967	1968	1969	1970	1971	1972	1973	1974	1975	1976	1977	1978	1979	1980	1981	1982	1983	1984	1985	1986	1987	1988	1989	1990	1991	1992	1993	1994	1995	1996	1997	1998	1999	2000	2001	2002	2003	2004	2005	2006	2007	2008	2009	2010	2011	2012	2013	2014	2015	2016	2017	2018	2019	2020	2021	2022	2023	2024	2025	2026	2027	2028	2029	2030	2031	2032	2033	2034	2035	2036	2037	2038	2039	2040	2041	2042	2043	2044	2045	2046	2047	2048	2049	2050	2051	2052	2053	2054	2055	2056	2057	2058	2059	2060	2061	2062	2063	2064	2065	2066	2067	2068	2069	2070	2071	2072	2073	2074	2075	2076	2077	2078	2079	2080	2081	2082	2083	2084	2085	2086	2087	2088	2089	2090	2091	2092	2093	2094	2095	2096	2097	2098	2099
Year	1900	1901	1902	1903	1904	1905	1906	1907	1908	1909	1910	1911	1912	1913	1914	1915	1916	1917	1918	1919	1920	1921	1922	1923	1924	1925	1926	1927	1928	1929	1930	1931	1932	1933	1934	1935	1936	1937	1938	1939	1940	1941	1942	1943	1944	1945	1946	1947	1948	1949	1950	1951	1952	1953	1954	1955	1956	1957	1958	1959	1960	1961	1962	1963	1964	1965	1966	1967	1968	1969	1970	1971	1972	1973	1974	1975	1976	1977	1978	1979	1980	1981	1982	1983	1984	1985	1986	1987	1988	1989	1990	1991	1992	1993	1994	1995	1996	1997	1998	1999	2000	2001	2002	2003	2004	2005	2006	2007	2008	2009	2010	2011	2012	2013	2014	2015	2016	2017	2018	2019	2020	2021	2022	2023	2024	2025	2026	2027	2028	2029	2030	2031	2032	2033	2034	2035	2036	2037	2038	2039	2040	2041	2042	2043	2044	2045	2046	2047	2048	2049	2050	2051	2052	2053	2054	2055	2056	2057	2058	2059	2060	2061	2062	2063	2064	2065	2066	2067	2068	2069	2070	2071	2072	2073	2074	2075	2076	2077	2078	2079	2080	2081	2082	2083	2084	2085	2086	2087	2088	2089	2090	2091	2092	2093	2094	2095	2096	2097	2098	2099

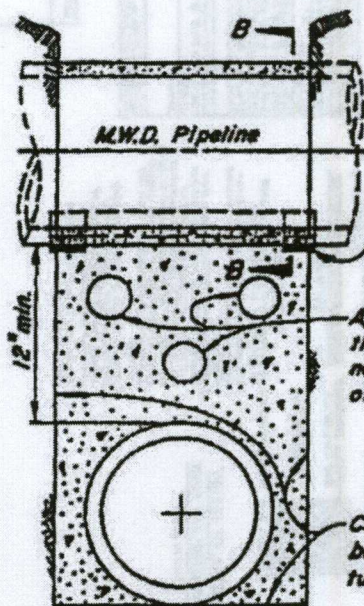


TON MURDER-CHICAGO WATER DISTRICT 1000 N. W. 10TH ST. CHICAGO, ILL. 60642	CHAIN LINK FENCE DETAILS	1000 N. W. 10TH ST. CHICAGO, ILL. 60642
---	-----------------------------	--

[illegible]

**FIGURE 5**



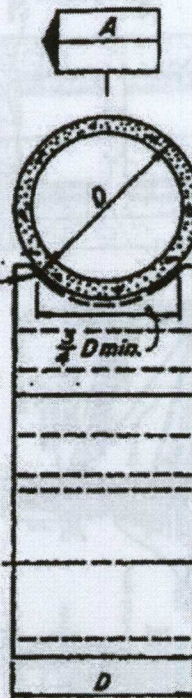


**SECTION "A-A"**

$\frac{1}{2}$ " x 6" premolded expansion joint filler

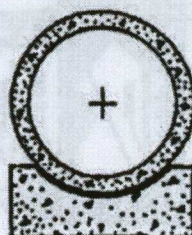
Apertures as directed by the Engineer, total volume not to exceed  $\frac{1}{4}$  the volume of the supporting wall

Concrete support wall to be placed against undisturbed ground



**CROSS SECTION**

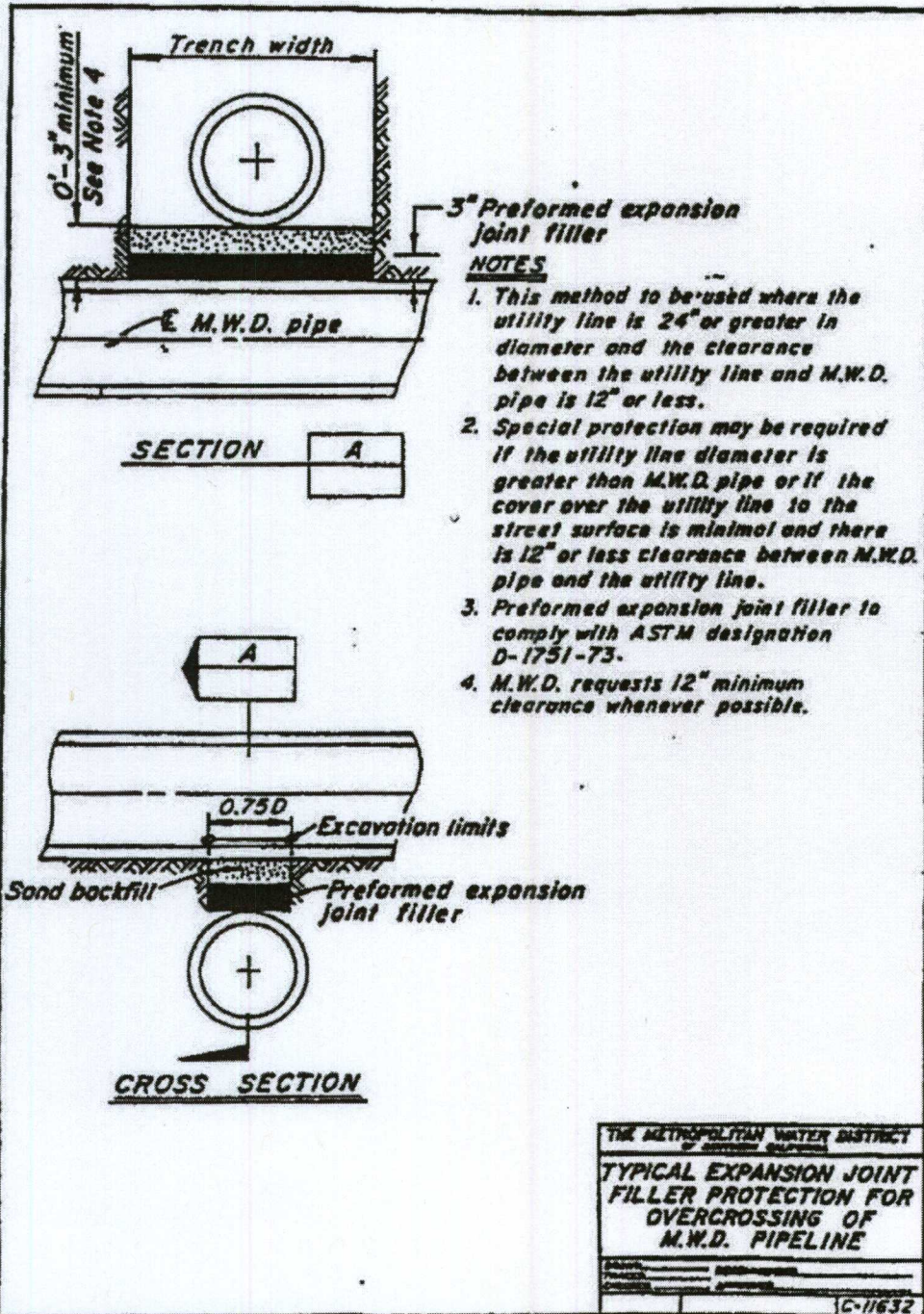
1. Supporting wall shall have a firm bearing on the subgrade and against the side of the excavation.
2. Premolded expansion joint filler per ASTM D-1751-73 to be used in support for steel pipe only.
3. If trench width is 4 feet or greater, measured along centerline of M.W.D. pipe, concrete support must be constructed.
4. If trench width is less than 4 feet, clean sand backfill, compacted to 90% density in accordance with the provisions of ASTM Standard D-1557-70 may be used in lieu of the concrete support wall.



**SECTION "B-B"**

THE METROPOLITAN WATER DISTRICT OF DENVER, COLORADO	
TYPICAL SUPPORT FOR M.W.D. PIPELINE	
DESIGNED BY	REVISIONS
CHECKED BY	DATE
C-9547	









State of California - Natural Resources Agency  
DEPARTMENT OF FISH AND WILDLIFE  
Inland Deserts Region  
3602 Inland Empire Blvd., Suite C-220  
Ontario, CA 91764  
(909) 484-0459  
[www.wildlife.ca.gov](http://www.wildlife.ca.gov)

EDMUND G. BROWN, Jr., Governor  
CHARLTON H. BONHAM, Director



June 12, 2014

Billie Blanchard  
California Public Utilities Commission  
505 Van Ness Avenue  
San Francisco, CA 94104

Subject: Notice of Preparation for the West Devers Upgrade Project  
Draft Environmental Impact Report  
State Clearinghouse No. 2014051041

Dear Ms. Blanchard:

The Department of Fish and Wildlife (Department) appreciates the opportunity to comment on the Notice of Preparation (NOP) of a Draft Environmental Impact Report (DEIR) for the West Devers Upgrade Project (Project) [State Clearinghouse No. 2014051041]. The Department is responding to the NOP as a Trustee Agency for fish and wildlife resources (California Fish and Game Code Sections 711.7 and 1802, and the California Environmental Quality Act [CEQA] Guidelines Section 15386), and as a Responsible Agency regarding any discretionary actions (CEQA Guidelines Section 15381), such as the issuance of a Lake or Streambed Alteration Agreement (California Fish and Game Code Sections 1600 *et seq.*) and/or a California Endangered Species Act (CESA) Permit for Incidental Take of Endangered, Threatened, and/or Candidate species (California Fish and Game Code Sections 2080 and 2080.1).

#### Project Description

The Project is located within the existing West Devers transmission corridor in Riverside and San Bernardino Counties, including Tribal Lands of the Morongo Band of Indians and the Cities of Banning, Beaumont, Calimesa, Colton, Grand Terrace, Loma Linda, and Redlands. The proposed Project will include the removal and upgrade of existing 220 kV transmission lines in six different segments. The segments were determined by location. The Project segments are described as follows:

Segment 1: San Bernardino. Two existing 220 kV double-circuit lines including 45 double-circuit towers will be removed and 61 towers will be installed within the existing right-of-way (ROW).



Segment 2: Colton and Loma Linda. One existing 220 kV line will be removed and rebuilt, involving the removal of 29 double-circuit towers and the installation of 353 towers.

Segment 3: San Timoteo Canyon: Removal of three existing sets of 220 kV towers and construction of two sets of towers, requiring the removal of 116 individual towers and installation of 133 towers.

Segment 4: Beaumont and Banning. Removal of approximately 175 structures and the installation of approximately 136 towers.

Segment 5: Morongo Tribal Lands and Vicinity. Six miles of this 9.5-miles segment are on Morongo Tribal Lands. In this segment, approximately 137 structures will be removed and approximately 108 structures will be installed. Three miles of the existing ROW on Morongo Tribal Lands will be abandoned and relocated to the south, near the I-15 Freeway.

Segment 6: Whitewater Devers Substation. Removal of approximately 116 structures, installation of 93 towers.

Substation Upgrades: The Project will also involve substation equipment upgrades at Devers, El Casco, Etiwanda, San Bernardino, and Vista Substations to accommodate increased power transfers on 220 kV lines.

#### Biological Resources and Impacts

The CEQA document should contain sufficient, specific, and current biological information on the existing habitat and species at the Project site; measures to minimize and avoid sensitive biological resources; and mitigation measures to offset the loss of native flora and fauna and State waters. The CEQA document should not defer impact analysis and mitigation measures to future regulatory discretionary actions, such as a Lake or Streambed Alteration Agreement.

If state or federal endangered or threatened species have the potential to occur on the Project site, species specific surveys should be conducted using methods approved by the Department or assume the presence of the species throughout the project site. The CEQA document should include recent survey data (CEQA Guidelines Section 15125(a)). The CEQA document should also address species of special concern and federal critical habitat. To assist with review, an accompanying map showing the areas of impact should be included in the subsequent CEQA document. Additional maps detailing the location of endangered, threatened, or species of special concern should also be included in the subsequent CEQA document.



Natural Community Conservation Program (NCCP) and California Endangered Species Act (CESA)

The Department is responsible for ensuring appropriate conservation of fish and wildlife resources including threatened, endangered, and/or candidate plant and animal species, pursuant to the CESA, and administers the Natural Community Conservation Plan Program (NCCP Program). Within the Inland Deserts Region, the Department issued Natural Community Conservation Plan Approval and Take Authorization for the Western Riverside County Multiple Species Habitat Conservation Plan (WR MSHCP) and the Coachella Valley Multiple Species Habitat Conservation Plan/Natural Community Conservation Plan (CV MSHCP) per Section 2800, *et seq.*, of the California Fish and Game Code. The WR MSHCP and CV MSHCP establish multiple species conservation programs to minimize and mitigate habitat loss and provide for the incidental take of covered species in association with activities covered under the permits.

Compliance with approved habitat plans, such as the MSHCPs, is discussed in CEQA. Specifically, Section 15125(d) of the CEQA Guidelines requires that the CEQA document discuss any inconsistencies between a proposed Project and applicable general plans and regional plans, including habitat conservation plans and natural community conservation plans. An assessment of the impacts to the MSHCPs as a result of this Project is necessary to address CEQA requirements. To obtain additional information regarding the WR MSHCP please visit: <http://rctlma.org/epd/WR-MSHCP> and for the CV MSHCP please visit: <http://www.cvmshcp.org>.

The proposed Project occurs within the WR MSHCP and CV MSHCP areas and is subject to the provisions and policies of the MSHCPs. In order to be considered a covered activity, Permittees must demonstrate that proposed actions are consistent with the MSHCPs and their associated Implementing Agreements. The California Public Utilities Commission is the lead agency but is not signatory to either the WR MSHCP or the CV MSHCP, therefore, in order to participate in either MSHCP they would need to act as a Participating Special Entity (PSE).

If the California Public Utilities Commission (i.e., the Lead Agency) chooses to act as a PSE and obtain take through the WR MSHCP then the following MSHCP policies and procedures will apply to this project: Protection of Species Associated with Riparian/Riverine Areas and Vernal Pools (MSHCP Section 6.1.2), Protection of the Narrow Endemic Plant Species (WR MSHCP Section 6.1.3), Additional Survey Needs and procedures (WR MSHCP section 6.3.2), and Urban/Wildland Interface Guidelines (WR MSHCP section 6.1.4).

If the California Public Utilities Commission chooses to act as a PSE and obtain take through the CV MSHCP then the project activities must comply with all of the terms and requirements of the Permit and Implementing Agreement. A PSE must submit a complete application for the proposed activity to the Coachella Valley Conservation Commission containing a detailed description of the proposed activity, a map indicating



the location of the proposed activity, and an analysis of its potential impacts to Covered Species and their Habitats and to the MSHCPs Reserve System. In addition, to minimize the impacts of development in the Conservation Areas and adjacent to the Reserve System the following measures will apply to the project: Required Avoidance, Minimization, and Mitigation Measures (CV MSHCP Section 4.4) and Land Use Adjacency Guidelines (CV MSHCP Section 4.5)

If the Project is not processed through the MSHCPs for covered species, then the Project may be subject to the Federal Endangered Species Act (FESA) and/or CESA for threatened, endangered, and/or candidate species. The Department recommends that a CESA Incidental Take Permit (ITP) be obtained if the project has the potential to result in "take" (California Fish and Game Code Section 86 defines "take" as "hunt, pursue, catch, capture, or kill, or attempt to hunt, pursue, catch, capture, or kill") of species of plants or animals listed under CESA, either during construction or over the life of the Project. The Department's CESA ITP states that a project fully minimize and mitigate impacts to State-listed resources.

#### Lake and Streambed Alteration Program

The Department has regulatory authority with regard to activities occurring in streams and/or lakes that could adversely affect any fish or wildlife resource. For any activity that will divert or obstruct the natural flow, or change the bed, channel, or bank (which may include associated riparian resources) of a river or stream or use material from a streambed, the project applicant (or "entity") must provide written notification to the Department pursuant to Section 1602 of the Fish and Game Code. Based on this notification and other information, the Department then determines whether a Lake and Streambed Alteration (LSA) Agreement is required. The Department's issuance of an LSA Agreement is a "project" subject to CEQA (see Pub. Resources Code 21065). To facilitate issuance of an LSA Agreement, if necessary, the environmental document should fully identify the potential impacts to the lake, stream or riparian resources and provide adequate avoidance, mitigation, and monitoring and reporting commitments. Early consultation with the Department is recommended, since modification of the proposed project may be required to avoid or reduce impacts to fish and wildlife resources. To obtain a Lake or Streambed Alteration notification package, please go to <http://www.dfg.ca.gov/habcon/1600/forms.html>.

Although the portions of the proposed Project are within MSHCP boundaries, a Notification of Lake or Streambed Alteration may be required by the Department, should the site contain jurisdictional areas, and the Project proposes impacts to these areas. Additionally, the Department's criteria for determining the presence of jurisdictional waters are more comprehensive than the WR MSHCP criteria in Section 6.1.2 (Protection of Species Associated with Riparian/Riverine Areas and Vernal Pools).

The following information will be required for the processing of a Notification of Lake or Streambed Alteration and the Department recommends incorporating this information



into the CEQA document to avoid subsequent documentation and project delays. Please note that failure to include this analysis in the project's environmental document could preclude the Department from relying on the Lead Agency's analysis to issue an LSA Agreement without the Department first conducting its own, separate Lead Agency subsequent or supplemental analysis for the project:

- 1) Delineation of lakes, streams, and associated habitat that will be temporarily and/or permanently impacted by the proposed project (include an estimate of impact to each habitat type);
- 2) Discussion of avoidance and minimization measures to reduce project impacts; and,
- 3) Discussion of potential mitigation measures required to reduce the project impacts to a level of insignificance. Please refer to section 15370 of the CEQA Guidelines for the definition of mitigation.

#### Cumulative Impacts

The Project extends through populated areas of southern California. The regional scarcity of biological resources may increase the cumulative significance of Project activities. Cumulative effects analysis should be developed as described under CEQA Guidelines Section 15130. Please include all potential direct and indirect project related impacts to riparian areas, wetlands, vernal pools, alluvial fan habitats, wildlife corridors or wildlife movement areas, aquatic habitats, sensitive species and other sensitive habitats, open lands, open space, and adjacent natural habitats in the cumulative effects analysis.

#### Alternatives Analysis

The CEQA document should analyze a range of fully considered and evaluated alternatives to the Project (CEQA Guidelines Section 15126.6). The analysis should include a range of alternatives which avoid or otherwise minimize impacts to sensitive biological resources. The Department considers Rare Natural Communities as threatened habitats, having both local and regional significance. Thus, these communities should be fully avoided and otherwise protected from Project-related impacts. The CEQA document should include an evaluation of specific alternative locations with lower resource sensitivity where appropriate. Off-site compensation for unavoidable impacts through acquisition and protection of high-quality habitat should be addressed.

Please note that the Department generally does not support the use of relocation, salvage, and/or transplantation as mitigation for impacts to rare, threatened, or endangered species. Department studies have shown that these efforts are experimental in nature and largely unsuccessful.



### Department Recommendations

The Department has the following concerns about the Project, and requests that these concerns be addressed in the CEQA document:

1. The CEQA document should quantify impacts to habitats and species as per the informational requirements of CEQA. An accompanying map showing the areas of impact should also be included.
2. The CEQA document should include recent biological surveys for fauna and flora (CEQA Guidelines Section 15125(a)). The Department recommends that the Lead Agency contact the Department's California Natural Diversity Database (CNDDB) in Sacramento, (916) 327-5960, to obtain current information on any previously reported sensitive species and habitat, including Significant Natural Areas identified under Chapter 12 of the California Fish and Game Code. If state or federal threatened or endangered species may occur within the project area, species specific surveys, conducted at the appropriate time of year and time of day, should be included with the CEQA document. Acceptable species specific surveys have been developed by the Department, and by the U.S. Fish and Wildlife Service, and are accessible through each agencies websites. Assessments for rare plants and rare plant natural communities should follow the Department's 2009 Protocols for Surveying and Evaluating Impacts to Special Status Native Plant Populations and Natural Communities. If the Department's 2009 guidelines were not used, surveys conducted after the issuance of the 2009 guidance should be updated following the 2009 guidelines. The guidance document is available here: [http://www.dfg.ca.gov/biogeodata/cnddb/pdfs/protocols\\_for\\_surveying\\_and\\_evaluating\\_impacts.pdf](http://www.dfg.ca.gov/biogeodata/cnddb/pdfs/protocols_for_surveying_and_evaluating_impacts.pdf)
3. The CEQA document should provide an analysis of habitat conservation plans and natural community conservation plans, including the WR MSHCP and the CV MSHCP. The CEQA document should include a discussion of how the project will affect reserve assembly; how the Project will affect the goals and objectives of each NCCP; the applicable policies and procedures that pertain to the Project; a discussion of survey requirements; and a list of proposed mitigation measures pursuant to each NCCP. A copy of any documents discussing the Project's consistency with the NCCP (e.g., Determination of Biologically Equivalent or Superior Preservation for the WR MSHCP) should be included with the CEQA document.
4. The analysis in the CEQA document should satisfy the requirements of the Department's Lake and Streambed Alteration Program and CESA (if deemed necessary).



5. The Department recommends that a CESA ITP be obtained if the Project has the potential to result in "take" (California Fish and Game Code Section 86 defines "take" as "hunt, pursue, catch, capture, or kill, or attempt to hunt, pursue, catch, capture, or kill") of State-listed CESA species, either through construction or over the life of the Project, and the applicant chooses not to process the Project through an NCCP. CESA ITPs are issued to conserve, protect, enhance, and restore State-listed CESA species and their habitats. The Department encourages early consultation, as significant modification to the proposed project and mitigation measures may be recommended in order to obtain a CESA ITP. Revisions to the California Fish and Game Code, effective January 1998, require that the Department issue a separate CEQA document for the issuance of a CESA ITP unless the Project CEQA document addresses all Project impacts to listed species and specifies a mitigation monitoring and reporting program that will meet the requirements of a CESA permit.
6. The CEQA document should provide a thorough analysis of direct, indirect, and cumulative impacts and identify specific measures to offset such impacts.
7. The CEQA document should analyze a range of fully considered and evaluated alternatives to the Project (CEQA Guidelines Section 15126.6).

In summary, the Department requests that the CEQA document include current information regarding biological resources, adequately address whether the project will be processed through the MSHCPs, provide a thorough analysis of cumulative impacts, and provide an alternatives analysis. If you should have any questions pertaining to these comments, please contact Heather Weiche at [Heather.weiche@wildlife.ca.gov](mailto:Heather.weiche@wildlife.ca.gov) and 909-980-8607.

Sincerely,



Ali Aghili  
Senior Environmental Scientist (Supervisor)

cc: State Clearinghouse  
CHRON



## Email: West of Devers Upgrade Project EIR/EIS

---

**From:** Herrera, Henry@CALFIRE <Henry.Herrera@fire.ca.gov>  
**Sent:** Monday, July 28, 2014 11:30 AM  
**To:** West Of Devers Project  
**Cc:** Stock, Mary@CALFIRE; Bywater, Rod@CALFIRE  
**Subject:** West of Devers Upgrade Project - CAL FIRE Comment

Frank Mc Menimen and Brian Paul:

Thank you for the opportunity to comment. Because of the frequent history of wildfires in and near the proposed project area, we would like to request that you consider the following for the safety of personnel and firefighting aircraft:

- Include us in your notification process during your construction phase.
- The towers be lit and maintained visible.
- Notify us whether helicopters will be used for the replacement of the towers and if so we would like to have a plan in place to coordinate with CALFIRE and U.S. Forest Service aviation staff in the event of a wildfire in or near the project area where we need to use firefighting aircraft.

Travis Alexander, Battalion Chief of Tactical Air Operations, will be your point of contact for these concerns. Travis can be reached at (951)575-5513, [travis.alexander@fire.ca.gov](mailto:travis.alexander@fire.ca.gov). Please include Travis in your mailing/contacts list for this project. Thank you for your consideration.

Henry Herrera  
Forester I, RPF #2936  
**CAL FIRE**  
San Bernardino Unit  
Resource Management  
3800 N. Sierra Way  
San Bernardino, CA 92405  
Cell (909) 253-6632  
Fax (909) 881-6969  
Desk (909) 475-8091  
[Henry.Herrera@fire.ca.gov](mailto:Henry.Herrera@fire.ca.gov)