

SDG&E EAST COUNTY SUBSTATION (ECO) PROJECT COMPONENTS

- Proposed SWPL Loop-In
 - Proposed 138 kV Line Transmission Line
 - Proposed 12 kV Temporary Distribution Tap
 - Existing Transmission Line
 - ▲ Existing Boulevard Substation
 - Proposed 138 kV Line Milepost
 - Proposed ECO Substation
 - Boulevard Substation Rebuild
- ### CONNECTED ACTIONS
- #### Pacific Wind Development (Iberdrola)
- #### Tule Wind Project Components
- Proposed Wind Turbine
 - Overhead Cable Collection System
 - 34.5 kV Overhead Cable Collection Structures
 - Underground Cable Collection System
 - Operation and Maintenance Station
 - Proposed 138 kV Gen-Tie Line
 - Alternate 138 kV Gen-Tie Line
 - Proposed 138 kV Transmission Line Structures
 - Access Roads

Energia Sierra Juarez U.S. (ESJ U.S.)

- ESJ U.S. 500kV Route
- ESJ U.S. 230kV Route

Energia Sierra Juarez Wind (ESJ Wind Phase I)

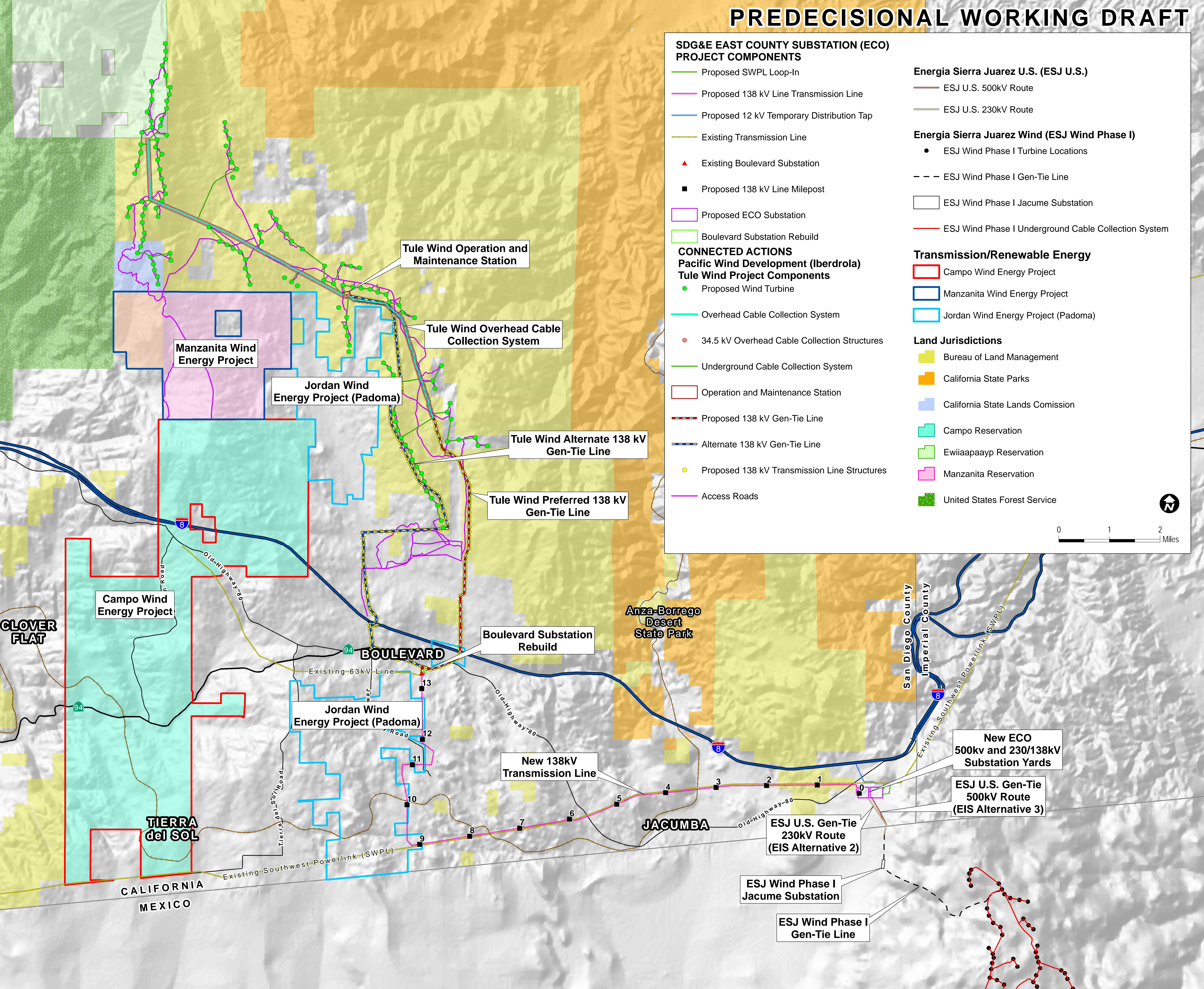
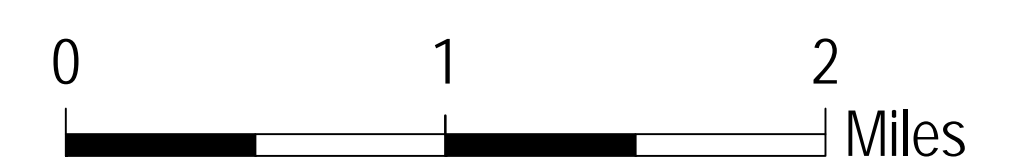
- ESJ Wind Phase I Turbine Locations
- - - ESJ Wind Phase I Gen-Tie Line
- ESJ Wind Phase I Jacume Substation
- ESJ Wind Phase I Underground Cable Collection System

Transmission/Renewable Energy

- Campo Wind Energy Project
- Manzanita Wind Energy Project
- Jordan Wind Energy Project (Padoma)

Land Jurisdictions

- Bureau of Land Management
- California State Parks
- California State Lands Commission
- Campo Reservation
- Ewiiapaayp Reservation
- Manzanita Reservation
- United States Forest Service



LOCATION OF SDG&E EAST COUNTY SUBSTATION PROJECT AND CONNECTED ACTIONS

SOURCE(S): Tule Wind Project: HDR Engineering 2010;
 ESJ U.S. Project: Entrix 2009;
 ESJ Wind Project: Entrix 2010
 ECO Substation Project: SDG&E, 2009
 Land Jurisdictions: Bureau of Land Management 2008; SANDAG- 2008; SanGIS 2008, 2009; USFS 2007
 Mapping Symbols: SanGIS 2008
 Basemap: Dukek 2008