



5020 Chesebro Road, Suite 200, Agoura Hills, CA 91301
Tel. 818-597-3407, Fax 818-597-8001, www.aspeneg.com

**PROJECT MEMORANDUM
SCE TRANSMISSION PROJECTS, SEGMENTS 1–11**

To: Jason Coontz, Project Manager, CPUC
From: Vida Strong, Aspen Project Manager
Date: February 13, 2014
Subject: Weekly Report 311: January 5 to January 11, 2014

INTRODUCTION

This report provides a summary of the construction and compliance activities associated with the following SCE transmission projects:

1. Antelope-Pardee 500 kV Transmission Project, Segment 1, including Antelope Substation expansion;
2. Antelope Transmission Project, Segments 2, 3A and 3B, including the Windhub and Highwind Substations; and
3. Tehachapi Renewable Transmission Project, Segments 4 through 11, including Whirlwind Substation and the expansion of Vincent Substation.

A summary of the Notices to Proceed with construction and Variance Request activity are also provided (see Tables 1 and 2, respectively, near the end of this report). Finally, a summary of Temporary Extra Workspace and non-compliance activity are provided in Tables 3 and 4, respectively.

CPUC/Aspen Environmental Monitors (EM): Jenny Slaughter (Lead Monitor), Cassandra Garza, Ryann Loomis, Jamie Miner, and Scott Debauche (helicopter tracking)

SEGMENTS 1-3: ANTELOPE-PARDEE AND ANTELOPE TRANSMISSION PROJECTS

Summary of Activity:

1. Construction of Segments 1, 2, 3A, and 3B has been completed including the Antelope, Highwind, and Windhub Substations. A Final Engineering Concurrence (FEC) request for additional cathodic protection along the adjacent gas pipelines along Segment 3B was submitted on December 13, 2013, and additional information was provided by SCE on January 13th and was approved by CPUC on January 27th. A FEC request to address Highwind Substation visual mitigation expected in the first quarter of 2014.
2. The Segment 3B transmission line and Highwind Substation were energized on December 6, 2012. Temporarily disturbed construction areas have been hydroseeded and may require additional seed application during the 2013/2014 rainy season. Vegetative growth has yet to reach the 70% cover requirement for disturbed areas.
3. Restoration on Segment 1 has been ongoing. The Antelope Pardee Transmission Year 3 Quarter 2 Monitoring Report was submitted on July 15, 2013, and comments were provided on September 3rd. A response was provided by SCE on October 5th. The Adaptive Management Plan for Segment 1 restoration was submitted on November 22, 2013, and a site visit with agency and SCE personnel was conducted on January 16th. SCE is currently implementing Adaptive Management Plan strategies.
4. Revegetation for Segments 2 and 3A was started in April 2011. Ongoing maintenance activities will be documented in reports to the CPUC. The Year 2 Monitoring Report (Fall 2012) was submitted on March 1, 2013.



Environmental Compliance:

1. A Notification to leave bird nest deterrents on Segment 3B structures during construction of nearby SCE projects was submitted on January 15, 2014.
2. No special-status species were observed during the subject period by Biological Monitors.
3. An Addendum for the Segment 3B Habitat Restoration and Revegetation Plan (HRRP) was reviewed by Aspen and comments were provided to SCE on December 17, 2012. The Segment 3B Addendum is being rolled into the Segment 4/5/10 Habitat Management and Monitoring Plan (see below).

No Project Memoranda or Non-Compliance Reports were issued for Segment 1-3 construction activities during the subject period. Non-Compliance activities for the project to date are summarized in Table 4.

Agency Representatives during Construction (other than CPUC EMs):

None

TEHACHAPI RENEWABLE TRANSMISSION PROJECT (TRTP) SEGMENTS 4-11

The SCE Tehachapi Renewable Transmission Project was evaluated in accordance with the California Environmental Quality Act and a Certification of Public Convenience and Necessity (CPCN) was granted by the CPUC on December 17, 2009. The CPUC and U.S. Forest Service (USFS) have prepared an SEIR/SEIS for the proposed changes requested in SCE's Petition for Modification of Decision 09-12-044 on the TRTP. The SEIR/SEIS addresses implementation of the FAA's recommendations including: installation of marker balls on 276 transmission line spans; installation of aviation lights on 90 transmission structures; and engineering refinements to reduce the height of 21 structures within Segment 8 between Chino and Mira Loma Substations utilizing a combination of shorter tubular steel poles and specially designed dead-end lattice steel towers, which would result in changing the previously approved structure type for seven structures. The CPUC issued a Final Decision for the FAA related changes on October 31, 2013, for non-ANF lands. A Record of Decision for the FAA changes on ANF lands is being prepared by the USFS and is scheduled for release in February.

SEGMENTS 4, 5, AND 10 – ANTELOPE VALLEY

Summary of Activity

1. Segment 4: Foundation work is 100% complete. Lattice tower erection is 100% complete and tubular steel pole (TSP) erection is 100% complete. This segment was energized on February 7, 2012. Areas disturbed by construction have been hydromulched and seeded. SCE filed a Notice of Termination (NOT) with the Regional Water Quality Control Board to close the Segment 4 SWPPP and the NOT has been approved. No construction activity was noted during the reporting period on Segment 4.
2. Segment 5: Foundation work is 100% complete. Lattice tower erection is 100% complete and TSP erection is 100% complete. This segment was energized in December 2012. Areas disturbed by construction have been hydromulched and seeded. BMP maintenance activities occurred at structure sites on Segment 5 during the subject reporting period.
3. Segment 10: Foundation work is 100% complete. Lattice tower erection is 100% complete with a total of 90 towers. This segment was energized on June 22, 2012. Areas disturbed by construction have been hydromulched and seeded. SCE filed a NOT with the Regional Water Quality Control Board to close the Segment 10 SWPPP and the NOT has been approved. No construction activity was noted during the reporting period on Segment 10.
4. Construction of control building structure continued at the Vincent Substation.
5. Segment 10 Telecom: Work has been completed.

6. Whirlwind Substation: Remaining work includes the testing and commissioning of the 500kV shunt capacitors and bus extensions.

Environmental Compliance:

1. The revised Segments 4, 5, & 10 Habitat Management and Monitoring Plan (HMMP) was submitted on December 30, 2011. Comments were provided to SCE on April 9, 2012 and responses were submitted on June 5. A series of calls are being held between SCE and the CPUC to review HMMP comments and responses. A revised HMMP for Segments 4, 5 and 10 is scheduled to be submitted March 31, 2014.
2. No special-status species were noted by Biological Monitors on Segments 4, 5, and 10 during the subject period.

No CPUC Project Memoranda or Non-Compliance Reports were issued for Segments 4, 5, and 10 during this reporting period. Non-Compliance activities for the project to date are summarized in Table 4.

Agency Representatives during Construction (other than CPUC EMs):

None

SEGMENTS 6 AND 11 – ANGELES NATIONAL FOREST & LOS ANGELES COUNTY

The Final EIS was released by the Angeles National Forest (ANF) on September 14, 2010. The ANF Record of Decision was issued on October 4, 2010, and the ANF Special Use Permit for Segment 6 was issued on September 21, 2011. As noted above, the CPUC and USFS prepared an SEIR/SEIS for the proposed changes to the TRTP requested in SCE's Petition for Modification of Decision 09-12-044 on the TRTP regarding implementation of FAA required improvements, including lighting and marker balls. The CPUC issued a Final Decision for the FAA lighting on October 31, 2013, for non-ANF lands. A Record of Decision for the FAA lighting on ANF lands is being prepared by the USFS and is scheduled for release in February.

Summary of Activity

Segment 6A (Constructs 1-35), Segment 6B (Constructs 36-71) and Segment 6C (Constructs 72 –113)

1. A Red Flag Warning occurred on January 6 because of wind and heat conditions. No work occurred on Segment 6.
2. Structure assembly and erection occurred at Constructs (towers) 1 and 113 (see Figures 1 and 2).
3. Grading occurred at Loop Road L between Constructs 100 and 104.
4. Drainage improvements and wet crossing installation/maintenance occurred at Constructs 11 and 12.
5. Wire stringing operations (such as preparation, wire install, clipping wire, and wire cleanup) occurred at Constructs 2 to 22 and 72 to 113 (see Figures 3 and 4).
6. BMP installation, maintenance, and inspection occurred at various construction locations.

Segment 6 percent completions to report date include: conductor removal 100%, structures removal 100%, foundation removal 100%, foundations installed 100%, tower erection 98%, and wire stringing 82.27%.

Segment 11A (Goodrich to Mesa Substation)

7. Construction activity on Segment 11A has been completed.

Segment 11B (Gould to Goodrich Substation)

8. Construction activity on Segment 11B has been completed. Restoration of temporary work areas has been scheduled for fall 2014.

Segment 11C (Vincent to Gould Substation)

9. A Red Flag Warning occurred on January 6 because of wind and heat conditions. No work occurred on Segment 11.
10. BMPs were installed at Constructs 20, 21, 22, 23, 24, 25, 26, 28, 30, 33, 34, 39, and 40, and at Pull/Tensioner (PT) site 53/54.
11. Vegetation clearing/trimming occurred at Constructs 4, 5, 6, 7, 8, 10, 19, 20, 23, 24, 26, 27, 28, 30, 33, and 39, at the Wire Site for Construct 11, at PT 11, 25, 44, and 53/54, and at the Maple Canyon Helicopter Assembly Yard (HAY).
12. Grading activities were conducted at Constructs -01, 5, 7, 8, 9, 10, 19, 27, 30, 31, 32, and 44, at PT 25, 31 and 44, and along the access road between Constructs 19 and 30.
13. Drainage improvements and wet crossing installation/maintenance occurred at PT 53/54.
14. Foundation excavation activities were conducted at Constructs 1, 3, 4, 9, 10, and 11.
15. Drilling activities for new foundations occurred at Constructs 1, 3, and 4 (see Figure 5).
16. Concrete foundation pouring occurred at Constructs 3 and 4.
17. UPC and PAR crews conducted assembly activities at Constructs 1, 2, and 67, and at the Maple Canyon HAY (see Figure 6).
18. Existing towers at Constructs 9 and 11 were removed.
19. Hydromulching for site stabilization occurred at Construct 25.
20. Native plant salvage was conducted at various locations throughout the subject period.

Segment 11D (Gould Substation)

21. Construction of outstanding Segment 11D items will be completed during the Segment 11C construction activities; however, BMP maintenance was conducted at the substation site during the subject week.

Segment 11 percent completions to report date include: conductor removal 20%, structures removal 15%, foundation removal 14%, foundations installed 9%, tower erection 1%, and wire stringing 49%.

Environmental Compliance:

1. SCE's Environmental Monitors conducted inspections of Storm Water Pollution Prevention Plan (SWPPP) erosion control devices along the Segment 6 and 11 rights-of-way. During the subject week, 14 incidents on Segment 6 were reported of damaged or inadequate BMPs, including silt fencing and straw wattles. The CPUC EMs noted that a total of 42 outstanding incidents during the reporting period were reported in the previously submitted weekly reports which were not addressed within a 72 hour corrective action period and are still awaiting correction within the field. On November 5, a Project Memorandum was issued by the CPUC to SCE regarding outstanding BMP inspection, maintenance, and repair items throughout Segment 6. A Corrective Action Plan listing all sites and the compliance implementation schedule was submitted to the CPUC on November 27, describing corrective actions which are scheduled to be completed by December 31, 2013. A follow-up to the Corrective Action Plan was submitted by SCE on January 16 and a site visit with the CPUC EM is scheduled for January 28.

On December 18, USFS sent a letter to SCE regarding compliance concerns with the TRTP ANF Special Use Permit SWPPP. The letter and supporting documents outlined construction sites not complying with the requirements of the SWPPP. SCE is required to bring the project back into compliance with SWPPP prior to February 1, 2014. Copies of the letter were sent to CPUC and the California State Water Board.

2. Archaeological and Native American Monitors were present during the reporting period to monitor construction activities. Weekly monitoring reports were submitted to the CPUC and the USFS. The purpose of the reporting is to inform the interested Native American communities about the nature of the work, weekly progress, and findings so that Native Americans are made aware of the construction as it progresses.
3. On January 29, CPUC EMs met with SCE to review helicopter flight tracks for Segments 6 and 11 for the period of January 13 to January 26. Per CPUC direction, GPS tracking of helicopters used for TRTP is to be implemented, with data to be reviewed by the CPUC for compliance monitoring. These reviews are taking place on a weekly basis and cover a one week period of construction activities. Each helicopter is now equipped with a GPS unit capable of showing the pilot restricted fly zones for sensitive resource areas (such as nesting bird buffers and spotted owl restricted area) and the GPS units are uploaded with the latest resource information coordinates on a daily basis. One incident occurred with a helicopter slightly edging through the Red Legged Frog Buffer, which may have been related to safety concerns of the area. The pilot was reminded of the buffer and no additional incidents were noted for the subject period.
4. No microtrash and general trash were reported during the subject week. SCE has not provided updates on the microtrash and general trash incidents reported in November and December 2013; however, SCE has reported that they are working with their contractors on this issue.
5. On January 7, the CPUC EM contacted the SCE Environmental Coordinator (EC) regarding unapproved parking in the southwest corner outside of the Vincent Substation outside of project disturbance areas. The SCE EC stated that vehicles would be moved (see Figure 7).
6. On January 7, the SCE Monitor observed a Warren James crew disturb an area outside of approved disturbance limits near Construct 26 on Segment 11C. The unapproved disturbed area measured approximately twenty square feet in mixed chaparral habitat. No impacts to sensitive resources were reported.
7. Mitigation Measure F-3d states, *“Remove hazards from the work area. SCE shall clear dead and decaying vegetation from the work area prior to starting construction and/or maintenance work.”* In accordance with this mitigation requirement, the USFS has agreed to allow SCE to remove dead/decaying trees or potential safety hazards along the project right-of-way. SCE is to provide the USFS with a weekly notification of any “Hazards” that have been identified and resolved. SCE did not submit any Hazard Notifications for Segment 6 or 11 to the USFS for the reporting week.
8. On July 24, SCE submitted a request for clarification regarding the seasonal restriction conditions from November 1 to March 31 related to the California red-legged frog on Segment 11 from the USFS. SCE requested clarity on the ingress/egress, BMP inspection/maintenance/repair, and herbicide application within the areas south of Aliso Canyon Road. This clarification allowing ingress/egress and BMP inspection/maintenance/repair was approved by USFS on November 7. Use of herbicide application year round in California red-legged frog seasonal restriction area will be requested in a forthcoming Amendment request to the USFWS Biological Opinion.
9. On March 26, SCE requested concurrence for the establishment of a 300-ft vertical helicopter buffer (instead of no over-flights) for the spotted owl seasonal restriction area during construction of Segments 6 and 11. Even though there are currently no active spotted owl nests, SCE is seeking this reduction for the upcoming nesting seasons during TRTP construction. USFS is reviewing this request.
10. On January 17, 24, and 28, and February 4 and 5, 2013, SCE submitted requests of concurrence for blanket nest buffer reductions for a number of species and within HAYs on USFS lands. Three of the six requests were granted by the USFS on February 4. On March 4, 2013, SCE submitted an additional request for programmatic buffer reductions for hummingbirds (Anna’s, Allen’s and black-chinned) and bushtits. On December 10, 2013, SCE submitted the TRTP Nesting Bird Management Plan to USFS for concurrence. Outstanding requests are under review by the USFS.
11. SCE submitted to the USFS, CDFW, and the CPUC a weekly nesting bird reporting spreadsheet reflecting nesting birds that have been identified as of October 17, 2013. No new nests were identified

on Segment 6/11 during the reporting period. PAR crews removed one inactive nest from the existing tower associated with Construct 9 on Segment 11C on January 8; however, the removal was conducted without following required project procedures. The tower bridge where the nest was located had already been removed prior to the SCE Biological Monitor arriving onsite.

12. No nesting bird buffer reduction requests were submitted by SCE to the USFS during the subject period.
13. San Diego desert woodrat middens located in Segments 6A (off USFS lands) and on Segment 11C (on USFS lands) were monitored by Project Biologists during the subject period. A total of three new middens were identified along Segment 11C during the subject week.
14. Exclusionary areas within bat habitat were monitored along Segment 11C during the subject week.
15. Special-status species that were observed during the subject period on Segments 6 and 11 included loggerhead shrike, southern California rufous-crowned sparrow, merlin, American dipper, and great blue heron.
16. The Segment 6 & 11 HMMP for non-ANF lands was approved by CPUC on December 19, 2013. This HMMP is subject to CDFW and SWRCB approval which is pending.

No CPUC Project Memorandum or Non-Compliance Reports were issued for Segment 6 during subject reporting period. Non-Compliance activities for the project to date are summarized in Table 4.

Agency Representatives during Construction (other than CPUC EMs):

Katie Vin Zant, Jason Jimenez, Rich Tobin and Mike Roberts, ANF.

SEGMENTS 7 AND 8 – LOS ANGELES AND SAN BERNARDINO COUNTIES

Summary of Activity

A project-wide stop work order was issued on October 19, 2011, for work subject to FAA mitigation. SCE was ordered to not perform any new or additional tower construction and conductor stringing in areas that have a high probability of being subject to FAA mitigations. SCE's construction contractors (Wilson, DCX, and Tri State) for 230/500 kV work were demobilized from Segments 7 and 8 and a new contractor will finish the remaining overhead construction activities. With the CPUC issuance of a Final Decision for the SEIR/EIS addressing FAA regulations on October 31, 2013, PAR has been selected as the new contractor for Segment 7 and Segment 8, Phase 4 work.

In support of the CPUC decision on July 11, 2013 (13-07-018) to remove the already constructed overhead towers in Chino Hills and place the circuit underground, Notice to Proceed #38 was issued by CPUC on August 23 (see Table 1) for tower and foundation removal which has been completed. A separate Notice to Proceed (NTP) Request for the underground installation was submitted on October 16 and is under review. A revised NTP Request addressing project changes will be submitted in Quarter 1 2014.

Segments 7 and 8 66 kV:

1. SCE crews pulled underground cable through Vaults 43209, 43219, 43220, P5457679, P54576780, V5513615, V5513699, and V5583862 in Chino.
2. Material was staged at the Rio Hondo Contractor Yard.

Segment 7

3. BMPs were installed at Towers M37-T3, M37-T4, M38-T1, M38-T3, M38-T5, and M39-T5, and at Wire Sites 7.47, 7.48, 7.50, and 7.52.

4. Drainage improvements and wet crossing installation/maintenance occurred at Jurisdictional Drainage ID# 7-3-S-1.
5. Union Construction continued grading of the access road and tower disturbance area for Tower M27-T3 in Duarte.
6. Assembly activities were conducted at Tower M37-T4.
7. To date, for Segment 7 100% of the conductor of the existing 220 kV Antelope-Mesa line has been removed and 100% of the structures have been removed. Of the 81 new double circuit 500 kV structures on the Mira Loma–Vincent line, a total of 12% of the conductor is strung, 96% of the foundations are complete and structure assembly is 65% complete.

Segment 8 Phase 1

8. Union Construction continued vegetation clearing and grading of the access road and temporary disturbance area for Tower M57-T1 in Tonner Canyon.
9. Maintenance of erosion control devices took place at various work areas.
10. To date, 100% of the conductor and structures have been removed from the existing 220 kV Chino-Mesa and Mira Loma–Walnut and Mira Loma–Olinda lines.

Segment 8 Phase 2

11. Construction is complete. Both 220 kV circuits (Chino–Mira Loma #1 and #2) were energized in June 2011.

Segment 8 Phase 3

12. SCE crews are conducting the preliminary construction work in Phase 3 until a new transmission line contractor is selected to complete the remaining work.
13. Foundation removal activities continued at Towers M0-T3 and M1-T1 in Ontario.
14. Wire stringing activities continued at Towers M0-T2 through M0-T9 in Ontario.
15. Maintenance of erosion control devices took place at various work areas.

Segment 8 Phase 4

16. BMPs were installed at Towers M40-T3, M42-T5, M42-T5A, M42-T6, M45-T5, M50-T2, M50-T3, M51-T3, and M52-T3, and at Wire Sites 8-4.12 and 8-4.13.
17. Vegetation clearing continued at Tower M50-T4.
18. Patriot crews continued grading of the access road and tower disturbance area to Towers M43-T3 and M49-T1 (see Figure 8).
19. Road grading occurred at Towers M44-T3 and M50-T4.
20. Foundation work for the engineered soldier pile wall took place at Tower M49-T1 (see Figure 9).
21. KV Structures continued foundation excavation and pouring at Tower M43-T3 (see Figure 10).
22. To date, 100% of the conductor and 100% of the structures on the existing 220 kV Chino-Mesa line have been removed.

In all phases of Segment 8, 89% of foundations and 72% of towers are complete. 21% of wire has been strung.

Environmental Compliance:

1. SCE has inquired about an alternate approval process for Segment 8 Phase 3 road changes due to the constant farming and access road changes in the Phase 3 right-of-way. SCE may be submitting an alternate access approval process for CPUC review.
2. Per CPUC direction, GPS tracking of helicopters used for TRTP is to be implemented, with data to be reviewed by the CPUC for compliance monitoring. Helicopter operations in Segments 7 and 8 are expected to begin in February during conductor installation activities.
3. One spill of an unidentified substance (volume not provided by SCE) was reported at Yard 75 (Irwindale Yard) during the subject week. According to SCE, all contaminated soil was removed and transported offsite for disposal.
4. On January 6, the SCE Environmental Monitor observed inadequate dust control along the access road to Tower M57-T1 (Segment 8, Phase 1) in Tonner Canyon. The fugitive dust plume measured greater than 100-feet in length. Additionally, several dump trucks transporting soil were observed without adequate load covers near the same location.
5. On January 6, the SCE Biological Monitor identified four project trucks driving on an unapproved road near the Fullerton Yard (Segment 8, Phase 4). The incident occurred within California gnatcatcher critical habitat. The area affected consisted of disturbed/developed habitat and measured approximately 250-feet in length along the access road. The area was subsequently surveyed and no impacts to sensitive resources were reported.
6. On January 8, crews conducted BMP maintenance at Towers M49-T2 and M49-T4 (Segment 8, Phase 4) without the required Biological Monitor present. These locations occur within California gnatcatcher occupied habitat and project conditions require an approved Biological Monitor present within a 2-mile radius.
7. On January 9, the SCE Biological Monitor observed one foundation hole associated with the soldier wall along the access road to Tower M49-T1 (Segment 8, Phase 4) that was inadequately covered to exclude wildlife. The hole, approximately 2 ½ feet deep, was left open overnight without an escape ramp. The Environmental Lead Monitor was notified and the issue was addressed and rectified.
8. One new San Diego desert woodrat midden was identified during the subject week. Three midden relocations occurred during the subject period. SCE provided a monthly woodrat relocation report for Segments 7 and 8 on February 3, which documented that four relocations occurred over the month of January.
9. Bald eagle, peregrine falcon, Cooper's hawk, coastal California gnatcatcher, and coastal cactus wren were among the sensitive species observed during the subject period by SCE Biological Monitors.
10. The Final Segment 7 & 8 HMMP was submitted on January 31 and approved by CPUC on February 11.

No CPUC Project Memoranda or Non-Compliance Reports were issued during the subject period for Segments 7 and 8. Non-Compliance activities for the project to date are summarized in Table 4.

Agency Representatives during Construction (other than CPUC EMs):

None.

CPUC NOTICES TO PROCEED (NTPS) & ANF PERMITTING

Table 1 summarizes the CPUC Notice to Proceed and ANF permitting activity for the Antelope Transmission Projects, Segments 1-3, and TRTP, Segments 4-11, to date.

TABLE 1
CPUC NTPs & ANF PERMITTING
(Updated 02/13/14)

NTP #/ Permit	Date Requested	Date Issued	Segment	Description
CPUC NTPs, Segments 1-3				
<i>For CPUC NTP and Addendum activity on Segments 1-3 prior to 2010, please see Table 1 in Weekly Reports 106, 107.</i>				
#26	12/18/09	01/05/10	1	Expansion of Antelope Substation
CPUC Addendum	12/21/09	01/19/10	1	Permanent AR 19 and access road to Const 34A
CPUC Addendum	12/21/09	01/19/10	1	Permanent refueling basin at Hydrant Yard
#27	12/23/09	01/05/10	3B	Oak Peak Communication Site
CPUC Addendum	01/25/10	02/01/10	2	Reclassification of two temporary roads to permanent and relocation of transposition poles
Revised CPUC Addendum	02/10/10	02/19/10	2	Relocate two previously approved transposition towers from Const 110 to Const 105
#28	02/10/10	02/18/10	3B	Highwind Marshaling Yard
#28 MOD	05/21/12	05/30/12	Highwind Yard	Entrance road and fence relocation.
#29	02/10/10	03/02/10	1	Relocation of the Sagebrush Transmission Line at the Antelope Substation expansion area
CPUC Addendum	03/17/10	03/26/10	3A	Vertical mulching, capping of a portion of the existing roadway, and making this overland route a permanent access for SCE operations and maintenance to Const 43
CPUC Addendum	04/06/10	04/27/10	3B	Elimination of transposition towers in Segment 3B
CPUC Addendum	04/16/10	04/22/10	1	Installation of fiber optics surrounding the Antelope Expansion
CPUC Addendum	05/25/10	06/04/10	1	Permanent overland travel routes for Operation and Maintenance inspections
CPUC Addendum	05/25/10	06/04/10	2	Permanent overland travel routes for Operation and Maintenance inspections
CPUC Addendum	11/23/10	12/14/10	Windhub Substation	Place additional riprap at the channel outlet at Windhub Substation, to mitigate for downstream erosion resulting from 2009/2010 rains
#30	12/01/11	02/21/12	3B	Construction of Segment 3B Towers 1-14
#30 MOD	03/21/12	03/26/12	3B	Use of alternate existing access road and change of road improvement designation.

NTP #/ Permit	Date Requested	Date Issued	Segment	Description
#31	01/16/12	03/05/12	Highwind Substation	Construction of Highwind Substation, Kern County
Final Engineering	06/22/12	07/12/12	Highwind Substation	Relocation of telecommunication tower @ Monolith Substation.
Final Engineering	10/11/12	10/18/12	Highwind Substation	Extension of 12 kV line into Highwind Substation.
#32	12/01/11	03/23/12	3B	Construction of Segment 3B Towers 15-75
CPUC Addendum	12/02/11	03/14/12	3B	Installation of cathodic protection for neighboring pipelines.
#32 MOD	05/11/12	05/25/12	3B	Road changes to Segment 3B Towers 15-78 and shift in Tower 39.
Final Engineering	Resubmit 06/15/12	07/12/12	3B	Gas pipeline cathodic protection changes.
Final Engineering	06/22/12	07/12/12	3B	Telecommunication equipment at Monolith Substation.
Final Engineering	06/12/12	08/13/12	3B	Gas pipeline cover. Data request sent 06/12/12. Additional data submitted to CPUC 08/06/12.
Final Engineering	08/03/12	09/10/12	3B	Road and grading changes and storm drain installation. Additional information requested 08/23/12.
Final Engineering	09/06/12	10/09/12	3B	Use of existing roads for stringing and gradient control mat.
Final Engineering	09/28/12	10/18/12	3B	AC mitigation ground rod testing and relocation of test site.
Final Engineering	10/19/12	11/01/12	3B	Additional AC Mitigation Zinc ribbons and ground rods.
Final Engineering	12/13/13	1/27/14	3B	Additional gradient control mats for pipeline protection.
CPUC NTPs Segments 4-11				
#1	01/13/10	02/11/10	4, 5, 10	Yard 28
#2	01/28/10	03/10/10	9	Vincent Substation Expansion
#3	03/09/10	04/01/10	7,8	Rancho Vista Yard
CPUC Addendum	04/09/10	04/19/10	9	Changes to Substation components
#4	01/27/10	04/26/10	7, 8	Segment 7 and 8 Cell Sites
#5	01/27/10	04/30/10	7	Segment 7 Telecom
#6	03/29/10	05/12/10	7,8	Mesa Materials Storage Yard
#7	05/12/10	05/28/10	8	Segment 8 telecommunications
#7 Mod	08/20/10	08/20/10	8	Minor re-routes to Segment 8 Telecom
#8	04/27/10	06/04/10	8	Segment 8 Contractor Yards
#9	07/21/10	07/29/10	7	Segment 7 Contractor Yards
#10	04/08/10	08/03/10	7, 8	66 kV re-route and relocation

NTP #/ Permit	Date Requested	Date Issued	Segment	Description
#10 Mod	01/28/11	02/04/11	7/8 66 kV	Replace 14 existing wooden H-frames poles with steel H-frame poles in order to support the double 66 kV circuit
#10 Mod	12/03/10	Retracted by SCE	7/8 66 kV	Change the design of the 66 kV line entry into the Chino Substation from underground to overhead. Visual simulation pending.
#10 Mod	03/15/11	03/22/11	7/8 66 kV	Removal and replacement of 21 wood poles with lightweight steel poles within Rio Hondo Substation
#10 Mod	04/22/11	04/29/11	7/8 66 kV	Underground telecom
#10 Mod	04/22/11	05/03/11	7/8 66 kV	Chino pole removals
#10 Mod	05/23/11	06/02/11	7/8 66 kV	Realignment of approximately 500 feet of 66 kV underground transmission line
#10 Mod	07/20/11	07/25/11	7/8 66 kV	Dusty underground connection
#10 Mod	08/26/11	09/01/11	7/8 66 kV	New Fiber Optic Underground trench
#10 Mod	08/29/11	09/08/11	66 kV	Insulator replacement in Montebello Hills
#10 Mod	09/28/11 additional information submitted 10/11/11	10/21/11	66 kV	Additional work areas and poles
#10 Mod	10/31/11	11/04/11	7, 8 66 kV	Additional underground trenching near Edison Avenue
#10 Mod	11/02/11	11/09/11	66 kV	Pole removal along Siphon Road
#10 Mod	12/13/11	12/22/11	7/8 66 kV	San Gabriel Dip extra work space and vault shift
#10 Mod	01/31/12	03/01/12	7/8 66 kV	Removal and installation activities at Pole No. 1431134E
Final Engineering	08/06/12	08/13/12	7/8 66 kV	Structure Installation, various reframing, installation of ground and guy wire, and shift activities.
Final Engineering	08/06/12	08/13/12	7/8 66 kV	Removal of Structures and performing sag adjustment activities.
Final Engineering	12/09/13	12/18/13	7/8 66 kV	Additional duct bank installation and work areas for telecom relocation in Chino.
#11	05/08/10	08/12/10	8	Segment 8 Transmission Line, Chino Hills, Phase I
#11 Mod	09/07/11	09/12/11	8	Increased grading limits for access road to towers M57-T1 and M24-T1A
#11 Mod	01/03/12	01/05/12	8	Relocation of a distribution pole and use of associated disturbance areas
#11 Mod	12/19/11	01/17/12	8	Structure additions or modifications, and associated structure work areas/access

NTP #/ Permit	Date Requested	Date Issued	Segment	Description
Final Engineering	05/28/13	06/18/13	8	Modification of access road from Everest Drive to M59-T2.
#12	07/28/10	08/20/10	4, 5, 10	Segment 4, 5, 10 Contractor Yards
#13	07/19/10	08/24/10	8	Segment 8 Transmission Line, Phase 2 and 3
Final Engineering	06/22/12	07/23/12	8	Addition of two towers M0-T9A and M66-J8, Segment 8 Phase 3.
Final Engineering	01/31/13	04/30/13	8	Access road and structure shifts.
#14	08/25/10	09/03/10	4	Partial Transmission Line work associated with an LADWP outage
#15	08/13/10	09/10/10	5	Segment 5 Transmission Line
#15 Mod	03/08/11	03/14/11	5	Modification of FOC alignment
#15 Mod	06/16/11	06/21/11	5	Additional disturbance areas for grading limits in 5 locations
#15 Mod	06/16/11	06/24/11	5	Temporary additional workspace near Tower 20
#15 Mod	10/18/11	10/25/11	5	Relocate CT 68 and associated extra work space
#15 Mod	03/23/12	03/30/12	5	Additional disturbance areas for drainage drain installation.
#15 Mod	03/14/12	04/18/12	5	Installation of two H-frame structures within the Sagebrush alignment to allow of clearance or TRTP conductor
Final Engineering	07/27/12	08/13/12	5	Installation of guard rails at Tower 19.
Final Engineering	09/17/12	09/17/12	5	Fencing for retaining wall at Construct 42.
#16	08/30/10	09/13/10	4	Segment 4 Transmission Line
Final Engineering	11/15/12	11/20/12	4	Installation of a transition pole outside of Whirlwind Substation.
#17	08/10/10	09/24/10	7	Segment 7 Transmission Line
#17 Mod	01/13/11	02/25/11	7	Segment 7 66 kV wreck-outs
#17 Mod	07/06/11	07/19/11	7	Access road additions, modifications, grading limit modifications, and OPGW splice sites
#17 Mod	07/15/11	07/19/11	7	Removal of existing overhead ground wire and skywrap and replacement with fiber optical ground wire
#17 Mod	02/24/12	03/01/12	7	Extra work space at M32-T4
Final Engineering	03/12/13	03/20/13	7	Recreational trail reroute at Towers M39-T4 and M39-T5.
Final Engineering	07/08/13	08/07/13	7	Expansion of grading area to construct access road to Tower M27-T3 in Duarte.
Final Engineering	09/10/13	09/25/13	7	Access roads to three locations in Segment 7.

NTP #/ Permit	Date Requested	Date Issued	Segment	Description
Final Engineering	12/18/13	01/17/14	7	Changes to permanent grading impacts at M27-T2.
#18	10/13/10	10/15/10	7	Potrero Grande Contractor Yard
#19	10/29/10	11/12/10	4, 5, 10	Avenue F Contractor Yard
#20	10/08/10	11/30/10	10	Segment 10 Telecom
#20 Mod	04/19/11	05/06/11	10 Telecom	Changes to telecom route. ITP/BO acreage confirmation pending
#20 Mod	06/17/11	06/24/11	10 Telecom	Additional trenching and vault placement along Oak Creek Road
#21	11/18/10	12/09/10	6 & 11	Vincent North Material Yard
#21 Mod	06/10/11	06/24/11	Vincent North MY	Telephone and IT installation at Vincent North Material Yard
#22	11/18/10	12/09/10	6 & 11	Vincent South Material Yard
CPUC Addendum	11/22/10	12/14/10	Vincent Substation	Section of road widening and riprap extension for the Vincent Substation expansion
#23	12/22/10	01/11/11	6 & 11	Material Yard 75
#24	11/10/10	01/13/11	8	Segment 8 West, Phase 4 Transmission Line
#24 Mod	06/15/11	06/20/11	8	Access road to M3-T3A and M48-T1, Segment 8 Phase 4
#24 Mod	11/14/11	11/17/11	8	Lower 66 kV line at I-605 shoofly
#24 Mod	11/30/11	12/15/11	8	Shift in M52-T2 structure location and associated extra work space and access roads
#24 Mod	03/20/12	04/16/12	8	Segment 8, Phase 4 Access road and structure additions and modifications.
#24 Mod	04/03/12	04/24/12	8	Access roads on Rose Hills and Sanitation District roads.
#24 Mod	04/11/12	04/24/12	8	Permanent access road to M49-T1 and M2-T4a
#24 Mod	05/22/12	06/05/12	8	Curve widening along access roads between M49-T2 and M51-T5.
Final Engineering	11/28/12	12/06/12	8	Final Engineering for permanent access road leading to M49-T2.
Final Engineering	03/05/13	05/07/13	8	M43-T3/M8-T1A access road.
Final Engineering	02/11/13 Additional information submitted 05/28/13	06/05/13	8	Two Phase 4 turnout expansions.
Final Engineering	05/16/13	06/11/13	8	Access road at M44-T3/M7-T2B.
Final Engineering	01/17/14	Under Review	8	USACE give back roads.

NTP #/ Permit	Date Requested	Date Issued	Segment	Description
#25	11/19/10	01/13/11	8	Fullerton (1) and Tonner Canyon (2) Contractor Yards. USFWS/CDFG survey requirements for Tonner Canyon required. Only Fullerton CY approved under NTP #25.
#26	06/22/10	01/14/11	9	Whirlwind Substation
#27	01/03/11	03/08/11	10	Segment 10 Transmission Line
#27 Mod	10/13/11	10/21/11	10	Relocation of Tower 39, in line shift
#27 Mod	11/01/11	11/10/11	10	Additional guard pole and turning radii locations
#27 Mod	11/14/11	11/21/11	10	Modify road near CT 25
CPUC Addendum	03/01/11	03/17/11	9	Bridge construction to access Whirlwind Substation
#28	04/22/11	05/06/11	6, 11	Construction Yard 58
#29	05/06/11	05/13/11	6, 11	San Gabriel Yard
#30	05/16/11	06/07/11	4, 5	Modifications to the Midway Vincent #3 T/L
#31	06/24/11	06/30/11	11A	Segment 11A Transmission Line Goodrich to Mesa (off ANF)
#32	09/12/11 09/14/11 10/13/11	11/09/11	6A	Construction of Towers 1-35 on private (non-ANF) lands
#32 Mod	01/18/12	02/08/12	6A	Additional work areas outside of ANF lands
Final Engineering	08/28/12	09/11/12	6A	Rev 4 engineering changes, non-ANF.
Final Engineering	02/21/13	03/29/13	6A	Gate replacement/installation.
Final Engineering	01/07/14	Under Review	6A	Changes to grading areas at three locations: Constructs M0-T1, 2, and 5.
#33	12/02/11	01/13/12	6B	Construction of Towers 35-72 on private (non-ANF) lands
#34	01/24/12	02/13/12	11D	Gould and Goodrich Substations
#35	01/26/12	05/16/12	6C	Construction of Towers 72-113 on private (non-ANF) lands
Final Engineering	07/15/13	08/05/13	6C	Modifications to grading area near Tower 113 off ANF lands.
#36	07/25/12	07/30/12	8	Geotechnical investigations in Chino Hills.
#37	07/20/12 revised 01/09/13	04/25/13	11B	Construction of Segment 11B, Gould to Goodrich (off ANF). Pending FAA concurrence.
#38	08/01/13	8/23/13 (revised)	8	Chino Hills Underground: removal of existing towers and foundations.
#39	08/14/13	10/10/13	11C	Construction of Segment 11C between Vincent and Gould Substations.
Final Engineering	01/07/14	Under Review	11C	Engineering Changes at M0-T1, CT 2 and 5.

NTP #/ Permit	Date Requested	Date Issued	Segment	Description
	10/16/13	Comments to SCE 10/29/13 & 11/01/13	8	Chino Hills Underground: underground conduit installation.
ANF PERMITTING – Segment 1, 6 & 11				
	11/29/07	12/14/07	1	Radio Repeater – installation of a temporary radio repeater site on Sierra Pelona Ridge to provide communication during construction activities tied to the project. Improvement installation began Jan. 11
	09/27/07	12/14/07	1	Geotechnical testing – 23 geotechnical borings are authorized on National Forest lands to provide additional information that will be used in the design of the transmission towers. Notice to proceed was signed Jan 31 to begin work the week of Feb. 3
		07/14/08	1	Removal of the 66 kV conductor within the ANF, from Tower 7-3 (near southern Forest boundary) to 16-3 (near Bouquet Reservoir) Phase I
		09/23/08	1	Removal of the 66 kV conductor within the ANF, Phase II
		10/23/08	1	Construction of the 500 kV transmission line and wreck-out of the 66 kV towers in the ANF, Section 2
SUP		09/21/11	6	Construction of Segment 6 towers
NTP		11/07/11	6A	Authorization to start construction of Towers CT1-CT35
NTP		01/11/12	6B	Authorization to start construction of Towers CT35-CT72
NTP		05/14/12	6C	Authorization to start construction of Towers CT73-CT113.
NTP		04/23/13	11B	Authorization to start construction of Segment 11B.
NTP	07/29/13	08/22/13	8	Removal of towers and foundations from Chino Hills Underground alignment.
Change Request #1	01/05/12	01/09/12	6	Radio repeater station locations allowed under SUP
Change Request #2	01/20/12	01/31/12	6	Use of Turnaround, water tank, and Rincon Red Truck Trail
Change Request #3	01/12/12	01/31/12	6	Engineering changes to reduce soil cut volume and minimize stockpile locations
Change Request #4	02/12/12	05/11/12	6	Engineering changes to 6C
Change Request #5	02/23/12	02/23/12	6	Redbox 16 kV Shoofly near Tower 71
Change Request #6	02/27/12	02/29/12	6	Extension to complete wire removal work within Arroyo toad restriction area up to March 3
Change Request #7	03/16/12	03/16/12	6	Barley Flats Repeater

NTP #/ Permit	Date Requested	Date Issued	Segment	Description
Change Request #8	05/10/12	Additional information requested 06/01/11	6, 11	Modification of Construction Work Plan to describe Helicopter Assembly Yard (HAY) development activities.
Change Request #9	06/08/12	06/22/12	6, 11	AQ-1d Use of wire pullers with pre 2006 engines
Change Request #10	08/02/12	09/06/12	6	Temporary Work areas for guy wire staking.
Change Request #11	08/14/12	09/04/12	6	Civil engineering changes to Segment 6B.
Change Request #12	08/22/12	Denied	6	Helicopter removal of 4 wreck-out towers in 6B.
Change Request #13	08/22/12	09/04/12	6	Additional work space at Construct 35.
Change Request #14	08/23/12	09/10/12	6	Additional work spaces in Segment 6A.
Change Request #15	08/29/12	11/15/12	6, 11	Addition of repeater to Mount Sally.
Change Request #16	09/08/12	09/17/12	6, 11	BMP maintenance in arroyo toad areas during restricted season.
Change Request #17	09/10/12	01/25/13	6	Foot trail and landing zone changes.
Change Request #18	09/11/12	09/20/12	6, 11	Use of pullouts along Big Tujunga for water tank storage.
Change Request #19	09/16/12	09/18/12	6	Using soil from off ANF (near Tower 5) at Construct 8.
Change Request #20	11/19/12	01/26/13	6	Installation of McCarthy drain at Construct 44.
Change Request #21	11/19/12	01/26/13	6	Installation of McCarthy drain at 59B.
Change Request #22	11/30/12	01/26/13	6	Installation of McCarthy drain at 192.
Change Request #23	12/03/12	05/21/13	6	Temporary work area at M31-T2.
Level 2 Change Request #24	11/30/12	01/08/13	6, 11	Allow overnight storage of jet fuel at Chilao Summit Helicopter Assembly Yard.
Change Request #25	12/18/12	01/26/13	6	Installation of a pipe gate at Gold Queen Mine near Tower 29.
Change Request #26	01/04/13	01/26/13	6	Repair of access road using Hilfiker wall near Tower 78.
Change Request #27	01/19/13	01/26/13	6	Removal of rock on Alder Creek Road.

NTP #/ Permit	Date Requested	Date Issued	Segment	Description
Change Request #28	02/04/13	02/14/13	6	Arroyo toad work completion.
Change Request #29	02/26/13	05/21/13	6	Trail landing zone 91.
Change Request #30	02/11/13	05/21/13	6	Placement of cut vegetation along access roads.
Change Request #31	03/19/13	05/21/13	6	Installation of gates on access roads to Mill Creek, and Constructs 68-70.
Change Request #32	04/29/13	06/11/13	6	Installation of a double McCarthy drain near Construct 79, Segment 6C.
Change Request #33	05/20/13	06/28/13	6	Removal of telecom wire removal near Tower 95, Segment 6C.
Change Request #34	08/14/13	08/14/13	6	Sunday work at Cogswell HAY during August and September 2013.
Change Request #35	08/28/13	Under Review	11	Installation of radio repeater at Mt. Vetter.
Change Request #36	10/15/13	Under Review	6, 11	Leveling of high/low spots in HAYs located on the ANF to reduce the amount of wood blocking used for tower assembly.
Change Request #37	12/10/13	Under Review	11	Additional McCarthy drain at Construct 6.
Change Request #38	12/25/13	Under Review	11	Engineering changes near towers 9X, 14, 23, and 25.

VARIANCE & TEMPORARY EXTRA WORKSPACE REQUESTS

Variance Requests and Temporary Extra Workspace (TEWS) Requests submitted to date are summarized in Tables 2 and 3, respectively.

TABLE 2
VARIANCE REQUESTS
(Updated 02/13/14)

Variance Request	Date Requested	Date Issued	Segment	Description
<i>For Variance Request activity on Segments 1-3 prior to 2010, please see Table 2 in Weekly Reports 106, 107.</i>				
Variance Requests, Segments 1-3				
VR #66	01/11/10	01/19/10	1	Modify the requirements of Mitigation Measure B-1a (Provide Restoration/Compensation for Impacts to Native Vegetation Communities) to fulfill a request from the property owner
VR #67	01/15/10	01/19/10	3A	Modify requirements of Mitigation Measure B-27b and APMs BIO-2 and BIO-7 to preserve cut Joshua trees onsite instead of off-site disposal to the extent possible for habitat creation purposes

Variance Request	Date Requested	Date Issued	Segment	Description
VR #68	04/09/10	04/12/10	1	Release restoration requirements on road to wreck-out Tower 20-4 in Section 3
VR #69	05/04/10	05/07/10	1	Contractor Yards surrounding Antelope Substation
VR #69 MOD	07/29/10	08/02/10	1	Additional space for storage at Antelope Substation for material being delivered for Antelope, Vincent and Whirlwind substations
VR #70	06/02/10	06/04/10	1	Additional disturbance areas adjacent to the pole erections for the 220 kV Sagebrush relocation work around the Antelope Substation
VR #71	06/22/10	06/23/10	1	Change in construction work hours for work on the Sagebrush 220 kV transmission line
VR #71 MOD #1	06/24/10	06/25/10	1	Expansion of construction hours for Sagebrush 220 kV T/L and foundation installation work at Antelope Substation
VR #71 MOD #2	07/08/10	07/09/10	1	Further expansion of construction hours for Antelope Substation construction
VR #71 MOD #3	11/18/10	11/19/10	1	Further expansion of construction hours for Antelope Substation construction
	02/07/12 Revised 06/06/12	08/08/12	1	Exemption of restoration requirements in areas where livestock grazing has occurred.
Variance Requests, Segments 4-11				
VR #1	03/25/10	03/26/10	9-Vincent	Expand grading area of Vincent substation by 15 feet for temporary turnaround areas for equipment
VR #2	05/25/10	05/27/10	7	Relocation of helicopter landing zone for Segment 7 telecommunications work
VR #3	06/08/10	06/10/10	7	Clarification of Segment 7 Telecom construction operating hours and to work the weekend dates of June 12, 13, 19, and 20, within the City of Irwindale
VR #4	08/11/10	08/13/10	9-Vincent	Utilize a fire hydrant along an unpaved spur road and also place two 10,000-gallon elevated water storage tanks adjacent to the hydrant
VR #5	08/20/10	08/20/10	7	Night work for Segment 7 Telecom
VR #6	08/26/10	08/26/10	8	Work on weekends for Segment 8 Telecom
VR #7	09/10/10	09/16/10	8	New wire setup and pull sites for Segment 8 Phase 1
VR#8	09/16/10	09/16/10	8	Clarification of construction hours for Segment 8 Phase 1
VR #9	09/14/10	09/20/10	Yard 28 & Rancho Vista Yard	Hotwork (welding and cutting) at Yard 28 and Rancho Vista Yard
Verbal	10/08/10	10/08/10	8, Phases 2 & 3	Wire sites for construction on Sunday, October 10
VR #10	10/08/10	10/13/10	8	Additional Phase 2 & 3 wire sites

Variance Request	Date Requested	Date Issued	Segment	Description
VR #11	10/01/10	10/15/10	8	Relief from focused biological survey requirements because of restricted property access, Phase I
VR #12	10/06/10	10/15/10	8	Additional Phase I wire sites
VR #13	11/09/10	11/17/10	5	Additional wire stringing sites
VR #14	11/17/10	11/19/10	8	Additional Shoofly pole in Tonner Canyon, Segment 8, Phase 1
VR #15	11/18/10	11/19/10	5	Additional guard poles between Highway 14 and Sierra Highway
VR #16	11/12/10	11/19/10	5	Realign an existing access road at the southeastern corner of the Vincent Substation 500 kV expansion area to allow for the construction of the Segment 5 T/L
VR #17	Revised 11/17/10	11/22/10	8	Additional 66 kV material storage near Rio Hondo and Chino Substations
VR #18	11/24/10	12/01/10	5	Continue use of two existing access roads that are approved under a TEWS
VR #19	Revised 11/23/10	12/01/10	5	Additional wire stringing sites
VR #20	11/30/10	12/02/10	8	Revised alignment of an access road for safer access to tower sites
VR #21	12/03/10	12/03/10	7/8	Remove fabric on chain-link fence surrounding Mesa MY because of graffiti
VR#22	11/22/10	12/07/10	7	Additional wire stringing sites
VR #23	12/03/10	12/09/10	7	Ten additional access roads
VR #24	12/17/10	12/20/10	8	Use of an existing concrete parking area/pad in Tonner Canyon as a helicopter landing zone and equipment staging and parking area, Segment 8, Phase I
VR #25	12/17/10	12/20/10	8	Revision to the Structure Work Area for Tower M73-T2, Segment 8, East (Phase III)
VR #26	01/06/11	01/06/11	7	Revised disturbance areas in Montebello Hills
VR #27	01/12/11	01/13/11	7	Relocation of interset tower M54-T3a
VR #28	01/14/11	01/19/11	Yard	Grading at Vincent South Material Yard
VR #29	01/14/11	01/19/11	Yard	Additional parking areas at Rodeo North and South Contractor Yards
VR #30	01/28/11	01/28/11	Yard	Grading at Vincent North Material Yard
VR #31	02/04/11	02/04/11	7, 8	Revised 66 kV underground alignment along Edison Avenue in the City of Chino
VR #32	02/04/11	02/07/11	Whirlwind	Temporary offsite equipment loading/unloading and parking area
VR #33	02/08/11	02/10/11	8	Access route to Tower M0-T6
VR #34		02/11/11	Whirlwind	Temporary concrete slab within work area (VR #32)
#35	02/14/11	02/14/11	8	Access to additional wire setup sites between Oaks Avenue and Tower M46-T7b

Variance Request	Date Requested	Date Issued	Segment	Description
#36	02/14/11	02/15/11	10 Telecom	Move two wood poles approximately 5 feet out of the drainage along Oak Creek Road
#37	02/19/11	02/24/11	6	Modification to Yard 75 boundaries
#38	02/23/11	02/25/11	8	Expansion of wire site for Phase 4 work
#39	03/01/11	03/03/11	All Yards	Replace fence fabric screening with slats for safety reasons during high wind events
#40	03/02/11	03/03/11	5	Additional access road to Construct 29
#41	03/04/11	03/08/11	5	Additional access road improvements
#42	03/04/11	03/08/11	4	Additional access road improvements
#43	03/03/11	03/10/11	8	Additional access to Tower M2-T2
#44	03/16/11	03/18/11	8	Tower M2-T5 and access road shift within SCE ROW
#45	03/22/11	03/25/11	5	Soil Stockpile areas at three locations
#46	03/25/11	04/04/11	7	Temporary disturbance areas for underground disturbance, 66 kV
#47	04/05/11	04/06/11	8	Wire Setup Sites for Tower M2-T2
#48	04/06/11	04/08/11	5,8	Start of construction prior to Los Angeles County Public Works grading permit issuance
#49	04/06/11	04/08/11	8	Extended work hours on Segment 8, Phase 2
#50	04/05/11	04/13/11	8	Turnouts along Sanome Mountain Way
#51	03/29/11	04/13/11	8	Water bar repair and construction
#52	04/11/11	04/14/11	7	Additional access to Interset M54-T3A
#53	04/05/11	04/15/11	5, 8	Permission to build slope stabilization Towers prior to L.A. County Public Works Permit
#54	04/14/11	04/18/11	5	Soil stockpile area near Tower 27
#55	04/12/11	04/20/11	4	Relocate two towers and associated access roads and disturbance areas within ROW
#56	04/13/11	04/20/11	Yards	Installation of temporary power poles to provide power to Vincent North and Vincent South Material Yards
#57	04/07/11	04/25/11	7	Additional improvements to Van Tassel Motorway
#58	05/02/11	05/05/11	8	Tower M48-T4 access road
#59	05/06/11	05/09/11	8	Segment 8 Phase 1, M49-T1 and M59-T2 additional parking, staging and turn-around areas
#60	04/25/11	05/13/11	7	Wire Setup Site expansions
#60 Mod	04/25/11	06/06/11	7	Additional Wire Setup Site 7.1a
#61	05/11/11	05/13/11	5	Additional access off Godde Hill Road
#62	05/12/11	05/18/11	7	Soil stockpile area near M27-T3
#63	05/19/11	05/23/11	8	Change to previously approved access road at M61-T1, Segment 8 Phase 1
#64	05/23/11	06/06/11	8	Extra work space to accommodate wire tagging areas

Variance Request	Date Requested	Date Issued	Segment	Description
#65	05/25/11	06/06/11	8	Extra parking, staging and turnaround at Tower M48-T3
#66	05/26/11	06/06/11	5	Elizabeth Lake access road
#67	05/27/11	06/06/11	8	Additional workspace near M23-T2A in Segment 8 Phase 1
#68	05/10/11 Revised 06/14/11	06/24/11	All	Allow continued use of approved TEWS access roads if nesting birds subsequently move in
#69	06/14/11	CPUC Review	All	Variance to MM AQ-1d
#70	06/14/11	06/30/11	5	Change in pulling site locations at CT 22, 43, 51a & 57
#71	06/27/11	07/06/11	8	Extra workspace at M57-T2 and M57-T3
#72	07/01/11	07/08/11	8	Additional workspace at the I-605 Shoofly area
#73	06/01/11	07/08/11	10	Shift in Tower 43 Wire Setup Site. Additional information provided 07/07.
#74	07/22/11	07/28/11	11A	Modification of guard pole sites along Segment 11A
#75	07/25/11	08/03/11	11A	Equipment AQ-1d compliance
#76	07/18/11 Revised 07/25/11	08/03/11	5	Relocation of a Wire Stringing Site near Tower 34. Inquiry sent 07/27
#77	07/27/11	08/03/11	4	Two additional Wire Stringing Sites near Towers 35 and 51. Inquiry sent 08/01
#78	08/03/11	08/04/11	8	Relief from focused biological survey requirements because of restricted property access, Phase I. CDFG approval provided
#79	08/06/11	08/11/11	4	Guard pole site near Tower 52
#80	08/10/11	08/12/11	10	Roadway reclassification and modifications near Tower 83
#81	08/12/11	08/18/11	10	Roadway reclassification and modifications near Towers 48 and 49.
#82	08/18/11	08/30/11	4	Wire setup site (WSS) relocations and new WSS and overland travel routes. Inquiry sent 08/22; response submitted 08/26
#83	07/26/11	08/30/11	8	MA1-T2 and MA1-T4 access road
#84	08/30/11	09/01/11	8	M54-T1 and M54-T2 Access road and staging area
#85	07/15/11	09/12/11	8	Additional guard structure sites at Fullerton Road and WSS at M51-T2, M51-T3, M50-T1, M45-T4 and M6-T2. Gnatcatcher acreages pending.
#86	09/02/11	09/12/11	4	Two guard pole sites
#87	09/09/11	09/12/11	10	Use of existing roads between 90th Street west and Tower 6
#88	09/15/11	09/20/11	4, 5 & 10	Allow for the use of six water trucks that don't meet the requirements of MM AQ-1d

Variance Request	Date Requested	Date Issued	Segment	Description
#89	09/15/11	09/22/11	10	Increased turning radii @ CT 67 & 68 and road improvement at CT 74
#90	09/26/11	10/03/11	5	Extra work space for CT 30
#91	09/28/11	10/03/11	5	Addition of mats @ CT 45
#92	10/01/11	10/03/11	4	Segment 4 access road use near Tower 31
#93	09/30/11	10/05/11	5	Additional Disturbance area near Tower 55A
#94	09/28/11	10/12/11	8	Widen the curve of an access road leading to Structure M56-T4
#95	09/30/11	10/12/11	5	Additional disturbance areas at Towers 19, 22, and 25
#96	10/12/11	10/17/11	8	Guard structure site and access road to Structure MA1-T3
#97	10/06/11	10/21/11	8	Telecom wire sites at Rose Hills
#98	10/22/11	11/04/11	4	Additional turning radii and road reclassification associated with Tower M73-T3AX
#99	10/20/11	11/01/11	8	Extra Workspace for topsoil salvage at M56-T3
#100	09/28/11	11/04/11	8	Twenty-four staging and turnaround areas
#101	11/02/11	11/04/11	5	Additional work space at CT 30, 51a and 61
#102	11/02/11	11/09/11	5	Extra Workspace near Tower 18
#103	11/04/11	11/09/11	5	Additional guard pole sites
#104	11/02/11	11/09/11	8	Use of 605 Shoofly as Contractor Yard
#105	11/06/11	11/14/11	5	Additional workspace at CT 6, 28B, 44, 68 and M113-T3
#106	11/09/11 & 11/10/11	11/17/11	5	Additional workspace and roadways at CT30
#107	11/16/11	11/18/11	8	Use of Contractor yard previously approved as TEWS, in Chino
#108	11/18/11	11/22/11	5	Extra work space near CT 50, 51a, and 55
#109	12/22/11	01/04/12	4	Additional wire stringing site outside of Antelope Substation
#110	01/13/12	01/10/12	8	Widen road near M55-T2 and M56-T1 in Phase 1
#111	01/11/12	01/17/12	5	Additional vehicle parking and equipment staging near Tower 25
#112	01/12/12	01/17/12	8	Permanent removal of the fabric screening surrounding the Mira Loma Contractor yard
#113	01/11/12	01/27/12	7	Addition of structure work areas in Montebello Hills
#114	01/24/12	02/03/12	5	Additional disturbance areas at Tower 86
#115	02/07/12	02/09/12	7	Expansion of Wire Sites and Guard Pole Structures
#116	01/27/12	03/01/12	8	Additional guard pole sites at M64-T4 and M64-T5
#117	02/24/12	03/01/12	7	Wire setup site expansions near Structures M33-T1 and M41-T4
#118	03/05/12	03/07/12	7	Access road near M42-T6 & WSS 7.75
#119	03/01/12	03/13/12	7	Snub site between M32-T3 and M32-T4

Variance Request	Date Requested	Date Issued	Segment	Description
#120	03/02/12	03/15/12	6, Vincent Yard	Access for pedestrian gate at Vincent North Yard
#121	03/16/12	03/20/12	5	Additional work area near Tower 19
#122	02/22/12	03/30/12	8	Running Branch Road staging area
#123	03/27/12	03/30/12	7	Additional parking areas at M39-T1 through M39-T3.
#124	03/26/12	03/30/12	5	Additional disturbance areas near M18-T5.
#125	03/27/12	04/06/12	6, Vincent Yard	Additional power and associated disturbance areas needed at Vincent yards.
#126	04/17/12	04/20/12	7	Additional area for WSS 7.15 on Segment 7
#127	04/04/12	04/23/12	8	Use of existing roads in Rose Hills & Sanitations District.
	03/30/12	Rescinded	6A	Corral relocation near Tower 12.
#128	05/03/12	05/14/12	7	Changes to wire sites and access roads between M30-T1 and M29-T3.
#129	05/01/12	Denied 05/16/12	8	Relief from focused biological survey requirements because of restricted property access, Rose Hills, Phase 4.
#130	06/05/12	06/12/12	6	Use of additional access road near Towers 11 and 12.
#131	06/03/12	06/06/12	6	Placement of 2 generators and additional road use in Aliso Canyon to provide power during distribution line outage.
#132	06/20/12	07/22/12	8	Curve widening along existing access roads, modified wire set up site and access, at structures M45-T4/M6-T2 and M45-T5 in Segment 8 Phase 4.
#133	07/18/12	08/07/12	6A and 6C off ANF	Guy wire staking outside of disturbance areas to provide stability of suspended loads.
#134	08/24/12	08/29/12	8	Landfill access to tower M45-T1.
#135	08/22/12	09/12/12	8	Construct M45-T5 access road curve widening and pull-outs.
#136	09/25/12	10/04/12	7	Extra work space and drainage crossing at Construct M31-T2.
#137	11/02/12	11/06/12	7	Additional work area for Tower M38-T4.
#138	10/29/12	11/20/12	6, 11	Expansion of Vincent South Material yard.
#139	01/09/13	01/11/13	5	Road Change designation from minimum to medium improvement near Tower 54.
#140	12/10/12	02/07/13	7	Additional wire sites and access road additions.
#141	01/30/13	02/13/13	66 kV	Access to Pole 1723533 along Durfee Avenue.
#142	02/11/13 Additional information submitted 05/28/13	06/05/13	8	Additional work areas and access roads, Segment 8 Phases 1 and 4.

Variance Request	Date Requested	Date Issued	Segment	Description
#143	05/23/13	06/05/13	8	Additional access roads, guard poles, and distribution clearances in Phase III.
#144	07/17/13	08/07/13	11B	Pedestrian access to distribution line via trails.
#145	08/15/13	08/23/13	8	Extra work space near Tower M57-T2 in Tonner Canyon.
#146	09/09/13	09/26/13	8	Use of two pull-outs for parking equipment near Towers M44-T3 and M43-T3.
#147	10/09/13	10/17/13	6A	Use of existing access roads for equipment staging.
#148	10/26/13	11/07/13	8	Additional parking areas near M57-T1 in Tonner Canyon.
#149	02/22/12 resubmitted 09/27/13	11/12/13	8	Extra work space @ Tower M60-T1.
#150	11/20/13	12/11/13	11C	Additional work areas near Tower 5.

TABLE 3
TEMPORARY EXTRA WORKSPACE (TEWS) REQUESTS
(Updated 02/13/14)

TEWS Request	Date Requested	Date Approved	Segment	Description
TEWS, Segments 1-3				
<i>For TEWS activity on Segments 1-3 prior to 2010, please see Table 3 in Weekly Reports 106, 107.</i>				
TEWS, Segments 4-11				
#1	09/30/10	09/30/10	7	Re-phasing work at a tower not previously identified on Rio Hondo–Amador-Jose-Mesa 66 kV
#2	10/08/10	10/08/10	4	Park a boom truck on LADWP access road during the outage
#3	10/12/10	10/12/10	8	Use a wire setup site not previously identified on Chino–Mira Loma No. 1
#4	10/20/10	10/20/10	5	Extra space from wire truck parking near Vincent Substation
#5	10/21/10	10/21/10	7	Use a site not previously identified for staging of equipment and materials at Tower M54-T3a
#6	11/01/10	11/01/10	5	Use of an existing SCE access road
#7	11/01/10	11/03/10	5	Use of an existing road (Parkwood Drive)
#8	11/02/10	11/02/10	8	Use a site not previously identified for vehicle parking and as a helicopter landing zone
#9	11/30/10	12/01/10	5	Use 8 existing spur roads as extra parking and turnaround areas
#10	12/02/10	12/02/10	7	Additional access road for on Rio Hondo–Anita No. 2 66 kV

TEWS Request	Date Requested	Date Approved	Segment	Description
#11	12/08/10	12/08/10	5	Use an existing spur road near Tower 29, north of Elizabeth Lake Road
#12	12/09/10	12/09/10	7	Additional access road near Towers M41-T1 through M41-T3
#13	12/14/10	12/14/10	8	Access road to Tower M0-T6
#14	01/10/11	01/10/11	8	Access road to Tower M2-T5
#15	01/11/11	01/11/11	8	Additional parking area in Tonner Canyon
#16	01/17/11	01/17/11	5	Additional parking and turnaround area near Tower 54
#17	01/18/11	01/18/11	7	Use of a dirt road for access to M41-T4 wire sites
#18	02/04/11	02/04/11	7	Additional access road to Tower M54-T3a
#19	02/11/11	02/11/11	5	Extension for use of mudpit road north of Elizabeth Lake Road
#20	02/15/11	02/25/11	7	Crane parking on Brookridge Road in the City of Duarte
#21	03/02/11	03/02/11	8	Additional parking within Tonner Canyon adjacent to M57-T1
#22	03/03/11	03/03/11	8	Additional parking within Tonner Canyon adjacent to M57-T3
#23	03/03/11	03/03/11	7	Additional parking for a crane along Greenbank and Brookridge Roads in the City of Duarte
#24	03/25/11	03/25/11	8	Additional space within Chino Sub for wire stringing
#25	03/31/11	03/31/11	5	Additional parking on SCE roads near Tower 50
#26	04/11/11	04/11/11	8	Additional access within Pathfinder Park to Tower M9-T1B
#27	04/12/11	04/14/11	8	Mid-span access between M3-T5 and M4-T1 to install sleeves.
#28	04/07/11	04/07/11	5	Additional parking/staging area adjacent to Tower 54; original TEWS had expired
#29	04/07/11	04/07/11	5	Use of private dirt road so that Woodward Brothers could remove their drill; cannot cross Amargosa Creek due to flow
#30	05/22/11	05/26/11	5	Mat placement to protect drainage pipes along access road at Parkwood Drive
#31	06/08/11	06/09/11	8	Additional access at the 605 Shoofly
#32	05/23/11	06/06/11	5	Use of spur road near Tower 26
#33	06/07/11	06/09/11	5	Extended original TEWS for spur road near Tower 54
#34	06/13/11	06/14/11	11	Additional parking outside of San Gabriel Yard
#35	06/28/11	06/28/11	5	Additional staging near Tower 44
#36	07/08/11	07/11/11	5	Additional staging area near Tower 51
#37	07/20/11	07/20/11	8	Additional access at Rooks Road
#38	07/20/11	07/20/11	8	Additional stage area at M60-T1

TEWS Request	Date Requested	Date Approved	Segment	Description
#39	07/27/11	07/27/11	8	Additional staging and turnaround between M54-T1 and M54-T2
#40	08/01/11	08/01/11	5	Use of spur road for additional parking and staging near Tower 52.
#41	08/08/11	08/12/11	5	Use of disturbed area for parking and equipment staging near Tower 30.
#42	08/10/11	08/10/11	8	New access to Tower MA1-T3
#43	08/12/11	08/12/11	8	Additional guard pole site on Fullerton Road
#44	08/12/11	08/12/11	11	Extra space at guard pole site on Del Mar Avenue
#45	08/12/11	08/12/11	8	Access to distribution poles along Archibald Avenue
#46	08/08/11	08/12/11	5	Use of disturbed area for parking and staging of equipment and vehicles.
#47	08/18/11	08/18/11	8	Additional parking at M64-T4
#48	08/19/11	08/19/11	11	Overland access to Tower M14-6
#49	10/13/11	10/13/11	8	Contractor yard, turning area and staging for 66 kV underground work in Ayala Park.
#50	11/07/11	11/14/11	5	Use of three existing spur roads for additional parking near Tower 68
#51	11/22/11	11/22/11	8	Use of an existing, paved road for additional access on Segment 8, Phase 3.
#52	12/29/11	12/29/11	8	Additional access roads within Rose Hills cemetery.
#53	01/04/11	01/04/11	7	Additional parking and staging area within Legg Lake.
#54	01/11/12	01/18/12	5	Additional parking and staging area near CT 48.
#55	01/18/12	01/18/12	5	Additional parking and staging area near CT 56.
#56	01/23/12	01/27/12	5	Additional parking and staging area near CT 42.
#57	01/30/12	01/30/12	8	Additional parking and staging area on Running Branch Road near M55-T1.
#58	01/30/12	01/30/12	8	Additional access road within Tonner Canyon.
#59	02/02/12	02/03/12	8	Additional parking and staging off of Frame Avenue.
#60	02/10/12	02/16/12	7	Extension of a wire setup site on Segment 7
#61	02/22/12	02/22/12	7	Road to access a wire setup site on Segment 7
#62	02/27/12	02/27/12	11	Access road at Goodrich substation.
#63	02/29/12	02/29/12	5	Access road to tower M18-5
#64	10/07/12	10/10/12	5	Edison Rd SE of Godde Hill RD.
#65	10/08/12	10/10/12	5	Distribution access road off of guard pole access road south of Godde Hill
#66	10/07/12	10/16/12	5	Shoulder of Elizabeth Lake Road.
#67	10/11/12	10/16/12	5	Shoulder of Elizabeth Lake Road.
#68	10/19/12	10/23/12	5	Additional access to M18-T5.
#69	11/30/12	12/02/12	5	Access Road to M111-T1 near Construct 60

TEWS Request	Date Requested	Date Approved	Segment	Description
#70	11/30/12	12/02/12	5	Access Road to M112-T1 near Construct 63
#71	11/30/12	12/03/12	5	Additional Parking area in vacant lot at Mountain Springs Road and Sierra Highway
#72	01/15/13	01/16/13	7	Installation of caution tape within Whittier Narrows Park to exclude the public from wire stringing areas.
#73	01/18/13	Unable to process as TEWS	8	Landing area for skywrap installation, could not approve as TEWS because location was within designated critical habitat for coastal California gnatcatcher.
#74	06/13/13	06/14/13	8	Overland travel access to a splice site in Segment 8 Phase 3.
#75	06/28/13	07/01/13	8	Additional 200 by 200 foot area for splicing associated with TEWS #74.
#76	07/01/13	07/01/13	8	Use of paved/graveled road between Mira Loma Yard and Substation.
#77	07/31/13	08/01/13	8	Crew access to adjacent tower to install grounds.
#78	08/01/13	08/05/13	6A	Utilize dirt access road for wire pulling activities.
#79	08/08/13	08/08/13	8	Extra workspace to access Tower M1-T5.
#80	08/13/13	08/13/13	11	Additional access to Yard 58.
#81	08/16/13	08/17/13	11	Additional parking area at Pasadena College parking lot.
#81	09/05/13	09/05/13	11	Extra space for guard structure set up, Eaton Dam.
#82	09/10/13	09/13/13	8	Access to existing manhole in Chino.
#83	09/10/13	09/13/13	8	Extra work space east of M2-T5, Segment 8 Phase 3.
#84	10/03/13	10/03/13	8	Use of disturbed area for extra work space near M60-T1 in Chino Hills.

NON-COMPLIANCES & INCIDENTS

Table 4 provides a summary of CPUC Non-Compliance Reports and Project Memorandums.

TABLE 4
CPUC NON-COMPLIANCE REPORTS & PROJECT MEMORANDA
 (Updated 02/13/14)

Type	Date	Location	Description
NON-COMPLIANCE REPORTS & PROJECT MEMORANDA, SEGMENTS 1-3			
<i>For CPUC Non-Compliance Reports & Project Memoranda activity on Segments 1-3 prior to 2010, please see Table 4 in Weekly Reports 106, 107.</i>			
NON-COMPLIANCE REPORTS & PROJECT MEMORANDA, SEGMENTS 1-11 (January 2010 thru the present)			
CPUC Non-Compliance Reports (NCR):			
NCR #1	Issued 02/24/11 Withdrawn 03/24/11	Project-wide	No notification of wildlife entrapment/mortality from bird deterrent netting.

Type	Date	Location	Description
NCR #2	09/13/11	Segment 7 66 kV	TRTP construction activity occurring in the San Gabriel Junction area prior to the installation of exclusionary staking for sensitive resource areas and without resource monitoring
NCR #3	08/15/12	Segment 8, Phase 4	Paleontological (paleo) monitoring not in compliance with PRMP.
CPUC Project Memoranda (PM)			
PM #1	04/27/10	Segment 3A	Delivery of equipment to Tower 43 within an ESA without monitors present
PM #2	06/23/10	Segment 8 West CY	Vegetation clearing without preconstruction biological or clearance surveys within TRTP right-of-way
PM #3	02/16/11	Project-wide	No notification provided on 10 separate Level 0 incidences
PM #4	02/16/11	Segment 7	Construction crews entered area prior to sweep being field validated by CPUC EM
PM #5	09/07/11	Segment 7	Use of unapproved area for staging material near Greenwood and Saturn Ave, Monterey Park
PM #6	12/09/11	Segment 7 66 kV	Use of unapproved areas for soil disposal
PM #7	Issued 12/09/11 Retracted 02/03/12	Segment 5	Non-reporting of special status species found during focused surveys in areas under construction
PM #8	04/20/12	Segment 7	Encroachment on a red-tailed hawk buffer by spacer cart.
PM #9	03/14/13	Segment 6	Track-out at Vincent Material Yard and Loop Road L.
PM #10	11/05/13	Segment 6	Outstanding SWPPP repairs on Segment 6.
PM #11	01/20/14	Segment 6	Equipment staging outside of approved work areas.

PROJECT PHOTOGRAPHS



Figure 1: Construct 1 structure assembly, Segment 6.



Figure 2: Construct 113 structure assembly, Segment 6.

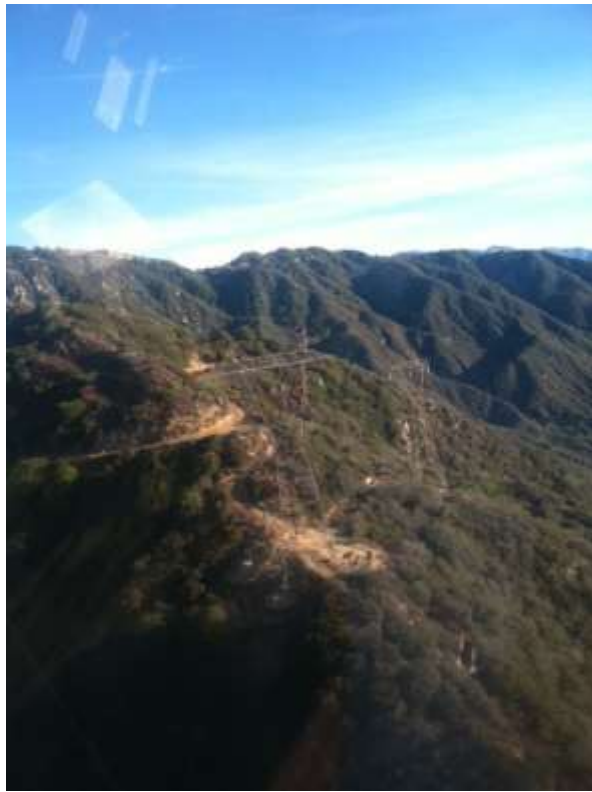


Figure 3: Wire stringing activities between Constructs 72 and 104, Segment 6.



Figure 4: Wire stringing activities between Constructs 72 and 104, Segment 6.



Figure 5: Foundation drilling at Construct 4, Segment 11C.



Figure 6: Assembly occurring at Construct 2, Segment 11C.



Figure 7: Parking outside of approved disturbance areas in the southwest corner behind the Vincent Substation.



Figure 8: Patriot grading crews at Tower M43-T3, Segment 8, Phase 4.



Figure 9: Setting a cage at Tower M43-T3, Segment 8, Phase 4.



Figure 10: Installing soldier wall supports at Tower M49-T1, Segment 8, Phase 4.