

# CPUC A.19-07-015 Proceeding

# SCE's Ivanpah-Control Project

## CEQA Draft EIR Public Meeting

2:30 P.M. Tuesday, April 28, 2026  
5:30 P.M. Thursday, April 30, 2028

**California Public Utilities Commission**  
**Energy Division**

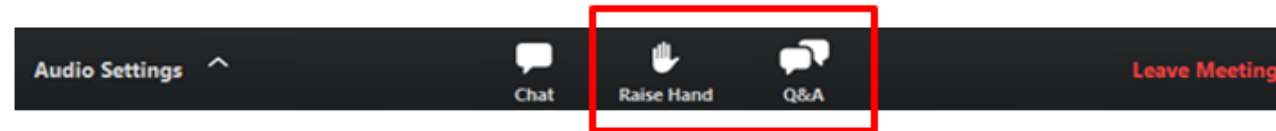


California Public  
Utilities Commission

**\*Note that this meeting is being recorded**

# Meeting Guidelines

- All attendees will be muted during the presentation.
- Please note that the **CHAT** box will be monitored, and project-specific questions will be addressed to the extent possible. If you have a question, please reach out to the CPUC via email at: [Ivanpah-Control@AspenEG.com](mailto:Ivanpah-Control@AspenEG.com)
- **Written Public Comment:** You may use the **CHAT** box to submit a written public comment, but email is preferred.
- **Oral Public Comment,** please wait until the end of the presentation. When we ask for public comments, use the **RAISE HAND** feature and we will call on you to speak.



- **Note:** This meeting is being recorded.

# Public Meeting Agenda

- Introductions
- Public Involvement
- Environmental Review Process (CEQA)
- Project Overview
- Environmental Impacts
- Alternatives
- CEQA Environmentally Superior Alternative
- Questions
- Public Comments

# Introductions

## State Lead Agency (CEQA):

- California Public Utilities Commission (CPUC)
  - John Forsythe, CPUC Project Manager

## CEQA Consultant:

- Aspen Environmental Group
  - Susan Lee, Aspen Project Manager

## Other Key Players/Roles

- Project Applicant: Southern California Edison (SCE)
- Bureau of Land Management (BLM): National Environmental Policy Act (NEPA) Lead Agency
  - \*Preparing separate Environmental Impact Statement*



# Purpose of CEQA

- **Inform** decision makers and the public about the potential significant environmental effects of a proposed project.
- **Identify** ways that environmental damage can be avoided or significantly reduced.
- **Prevent** significant, avoidable damage to the environment through the use of alternatives or mitigation measures.
- **Disclose** to the public the reasons why a governmental agency approved the project if significant environmental effects are involved.
- Focus on **physical impacts** to the environment.



California



Environmental



Quality



Act

# Public Involvement To Date

## Scoping

- 30-day EIR scoping period (September 1-30, 2020) (16 letters received).
- Two virtual scoping meetings (September 3 and 10, 2020).

## Tribal Consultation

- Formal AB 52 consultation with 18 tribes from 2018 to the present.

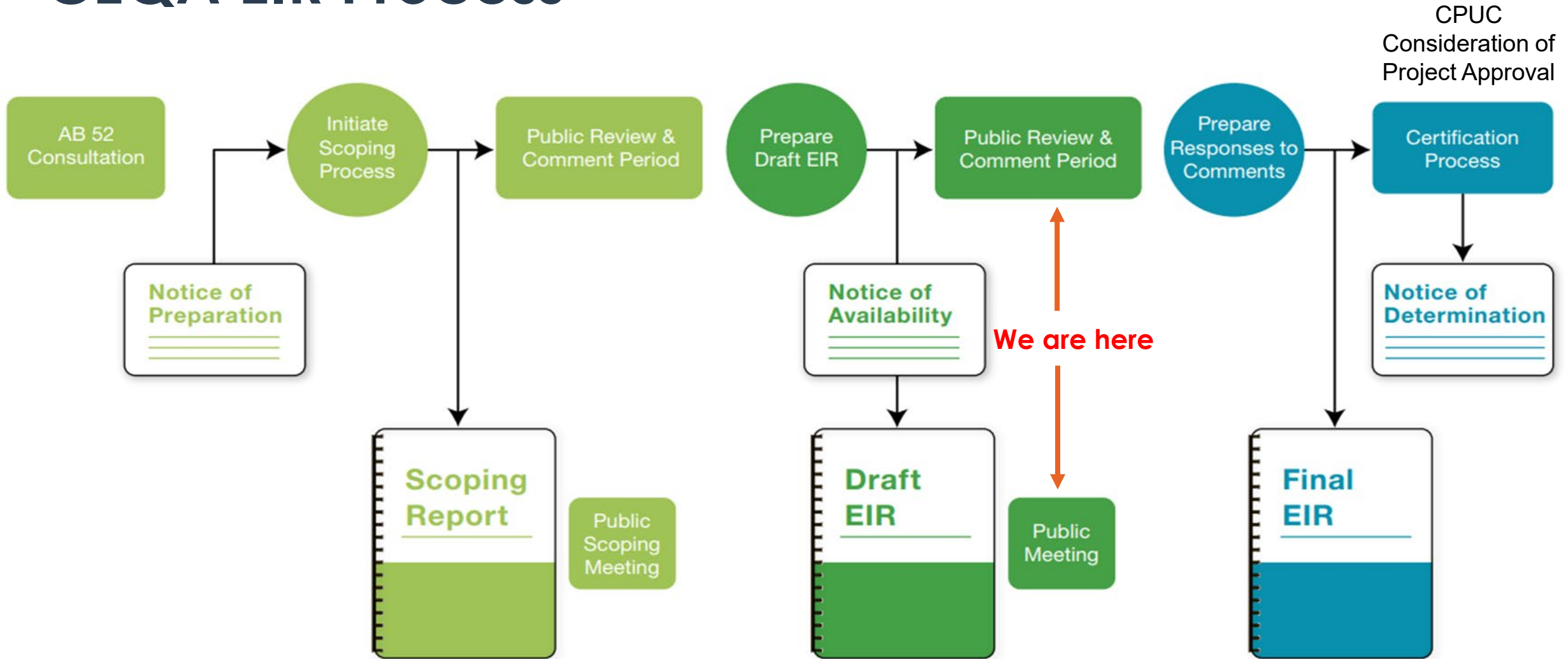
## Public Agencies

- CPUC held agency meetings with multiple federal, state, and local agencies:
  - Bureau of Land Management, National Park Service, U.S. Fish and Wildlife Service, CA Dept of Fish and Wildlife, Caltrans, Inyo County, Los Angeles Department of Water and Power, State Historic Preservation office, air pollution control districts, and other agencies.

## Other Public Outreach

- Project website, contact email, contact phone number

# CEQA EIR Process

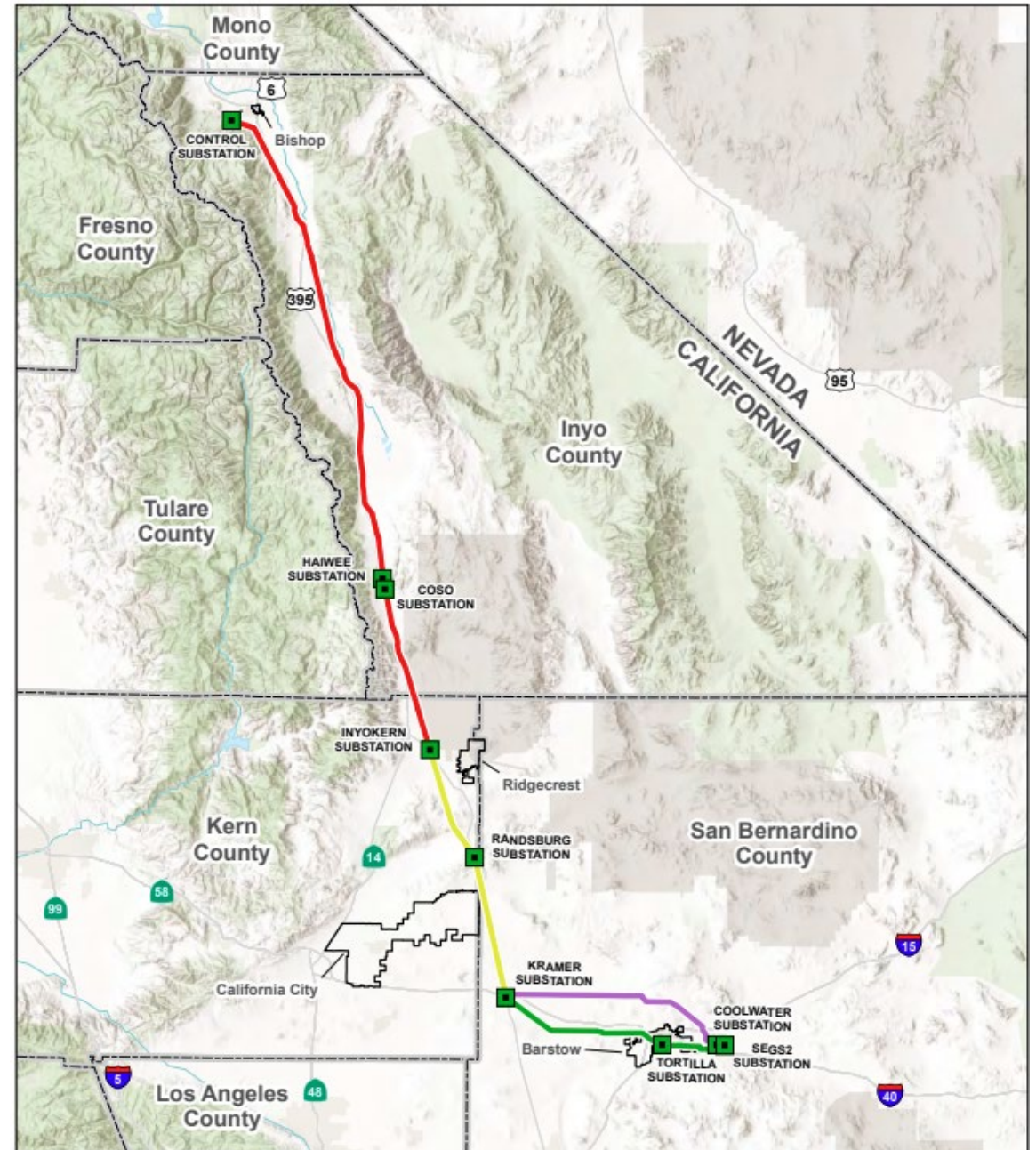


# Project Location

**Segment 1 (126 miles):** Inyo County and Kern County

**Segment 2 (49 miles):** Kern County and San Bernardino County

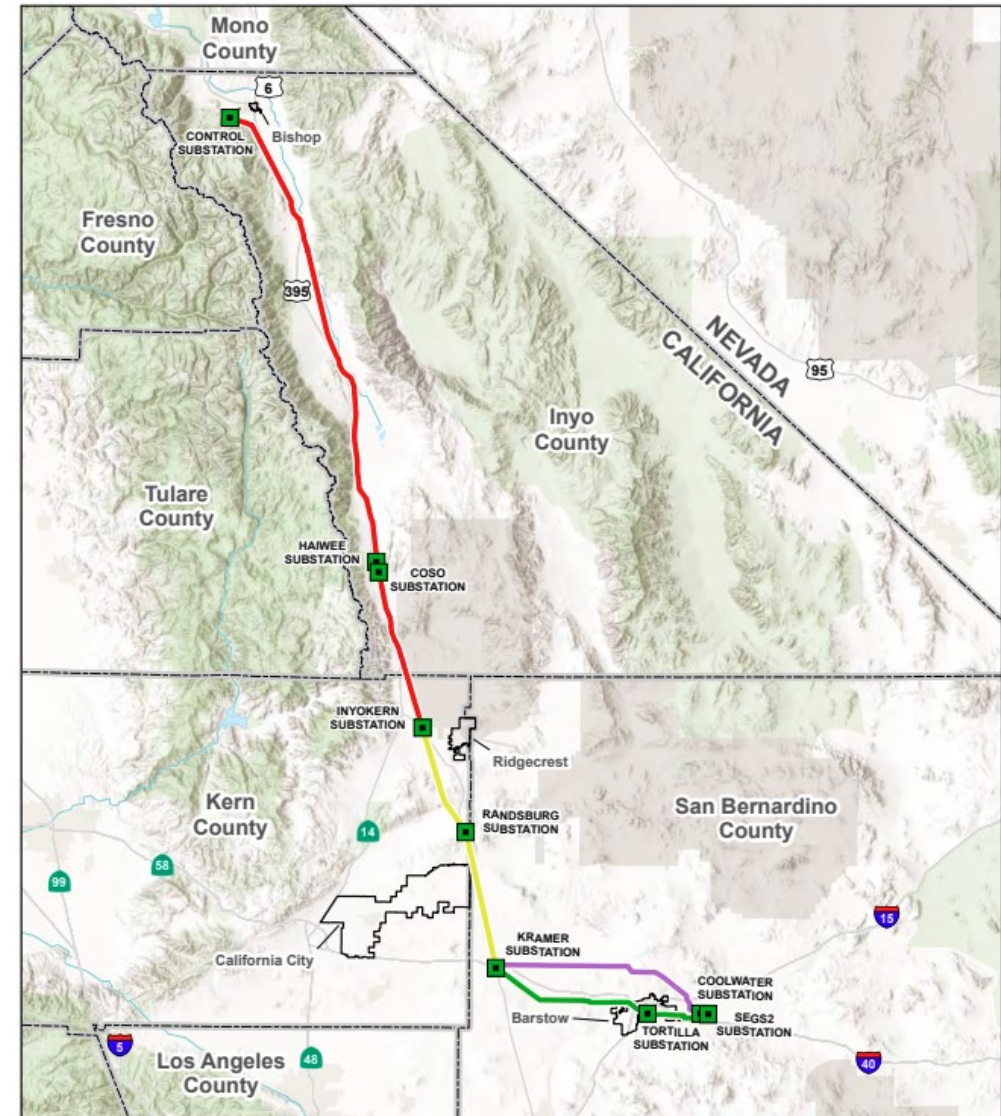
**Segment 3N (44 miles)** and  
**Segment 3S (44 miles):** San Bernardino County



# Project Summary by Segment

SCE proposes to correct engineering issues along approximately 262 miles of existing 115 kV subtransmission circuits:

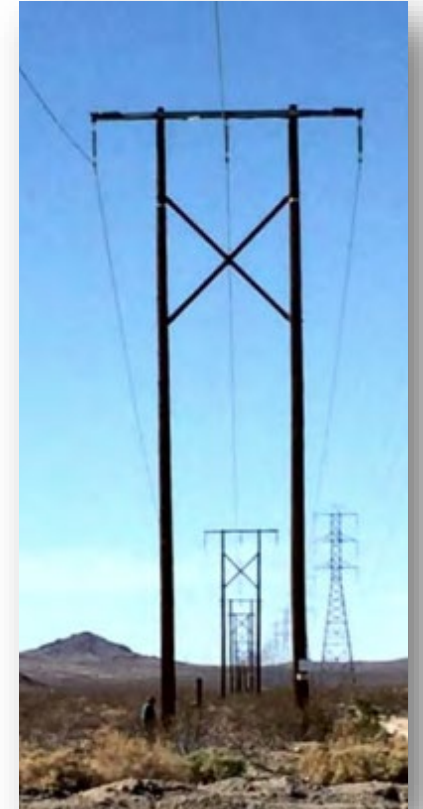
- **Segment 1:** Construct new 115 kV line from Control Substation (Bishop) to Inyokern Substation (west of Ridgecrest); then remove existing 115 kV line
- **Segment 2:** Construct new 115 kV line from Inyokern Substation to Kramer Substation (at the intersection of Hwy 58 and US 395); then remove existing 115 kV line
- **Segment 3N:** Replace certain structures and install new conductor from Kramer Substation to Coolwater Substation (Daggett), along the northern route
- **Segment 3S:** Replace certain structures and install new conductor from Kramer Substation to Tortilla Substation (Barstow) to Coolwater Substation (Daggett), southern route



# Proposed Project Purpose

## Purpose:

- The Project is needed in order to meet the transmission line safety and reliability requirements defined by the CPUC and the North American Electric Reliability Corporation (NERC).
- The existing subtransmission facilities are over 100 years old, and some or all of these structures need to be replaced to allow for continued safe operation.

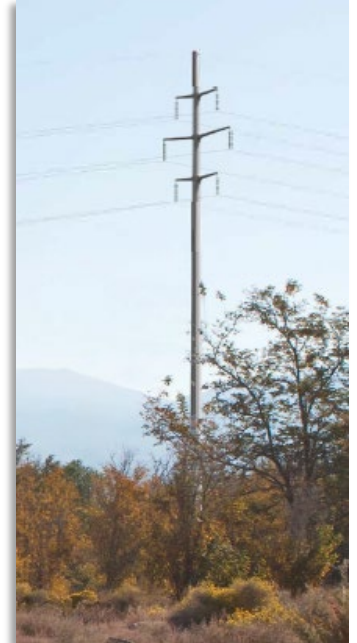


# Project Summary, continued

## Existing Line (Structure Types Vary)



## Proposed Rebuild (Structure Types Vary)



# CEQA: Environmental Resource Areas

- **Aesthetics**
- Agriculture and Forestry Resources
- Air Quality
- Biological Resources
- **Cultural Resources**
- **Tribal Cultural Resources**
- Energy
- Geology, Soils, and Paleontology
- Greenhouse Gas Emissions
- Hazards and Hazardous Materials
- Hydrology and Water Quality
- Land Use and Planning
- Mineral Resources
- Noise
- Population and Housing
- Public Services
- Recreation
- Transportation
- Utilities and Service Systems
- Wildfire

# For Each Resource Area, the EIR ...

- Defines and describes **Existing Setting**
  - Environmental setting, including SCE's existing 115 kV circuits
  - Regulatory setting
- Establishes **Thresholds of Significance**
  - What defines a “significant” impact
- Identifies **Project Impacts and Mitigation**
  - SCE Applicant Proposed Measures
  - CPUC Mitigation Measures
  - Significance after mitigation
- The EIR identifies **impacts of alternatives** and defines the CEQA Environmentally Superior Alternative (Chapter 4)
- Evaluates **Cumulative Impacts (Chapter 5)**



# Proposed Project - Key Impact Conclusions of Draft EIR

- The Draft EIR recommends **48 mitigation measures** to reduce Project impacts to **Less than Significant** levels for the following EIR disciplines:

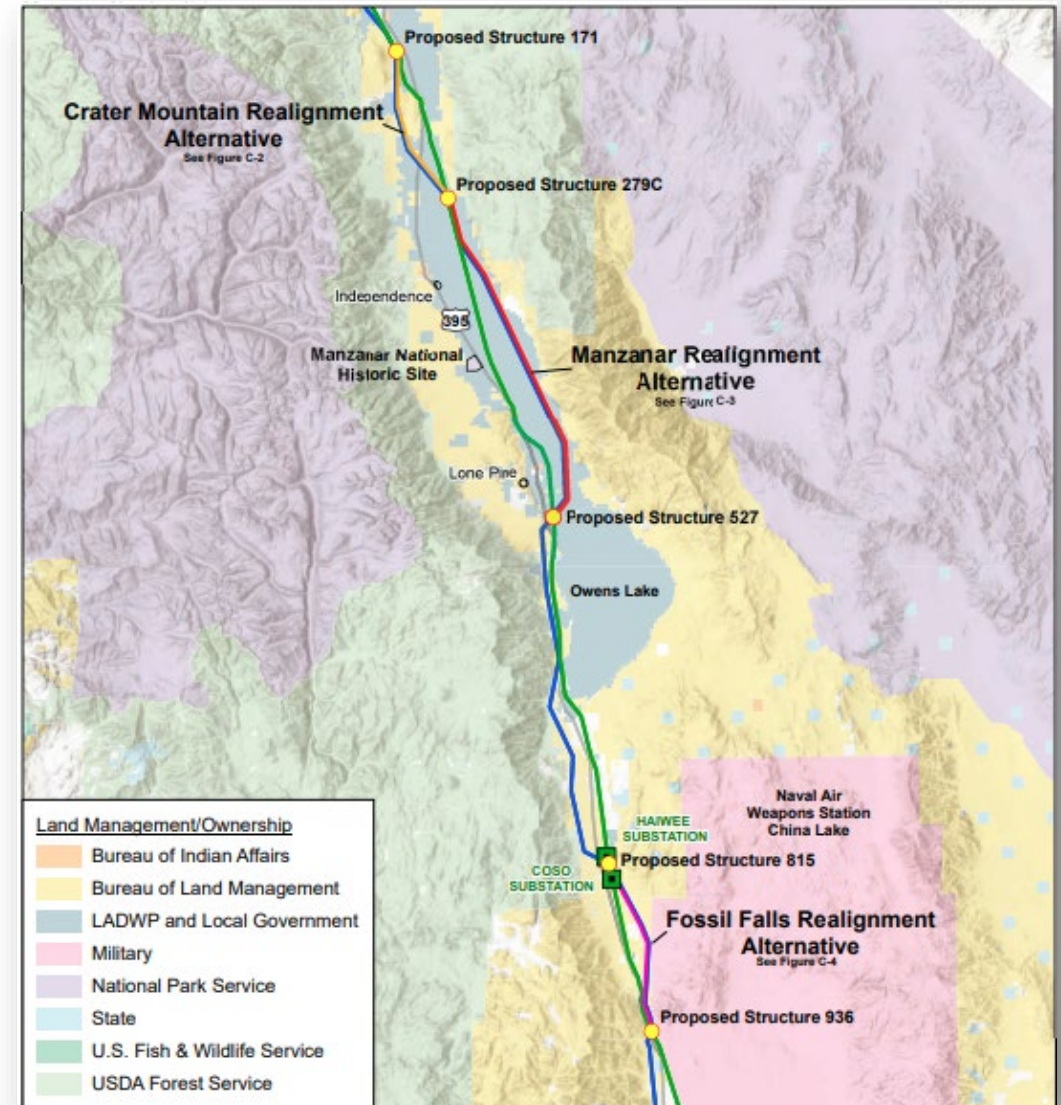
EIR Disciplines	
<ul style="list-style-type: none"><li>• Aesthetics</li><li>• Agriculture and Forestry Resources</li><li>• Air Quality</li><li>• Biological Resources</li><li>• Geology</li><li>• Paleontology</li><li>• Hazards</li></ul>	<ul style="list-style-type: none"><li>• Hydrology and Water Quality</li><li>• Mineral Resources</li><li>• Noise</li><li>• Public Services</li><li>• Recreation</li><li>• Transportation</li></ul>

# Proposed Project - Key Impact Conclusions of Draft EIR

- Draft EIR concludes that even with implementation of mitigation measures, the Project would result in ***Significant and Unavoidable*** impacts to:
  - **Aesthetics** (*construction and operations*): Substantially damage scenic resources within a state scenic highway [EIR Section 3.2]
  - **Cultural Resources** (*construction and operations*): Substantial adverse change in the significance of a historical resource pursuant to CEQA Guidelines. [EIR Section 3.6]
  - **Tribal Cultural Resources** (*construction and operations*): Substantial adverse change in the significance of Tribal Cultural Resources identified by consulting tribes [EIR Section 3.7]
  - **Project's contribution** to cumulatively considerable impacts to Cultural and Tribal Cultural Resources. [EIR Section 5]

# Alternatives Evaluated in EIR

- **Crater Mountain Realignment Alternative:** 14 miles long along Segment 1, adjacent to existing LADWP transmission facilities, using existing LADWP access roads
- **Manzanar Realignment Alternative:** 29 miles long along Segment 1, adjacent to existing LADWP transmission facilities, using existing LADWP access roads
- **Fossil Falls Realignment Alternative:** 16 miles long along Segment 1, adjacent to existing LADWP transmission facilities, using existing LADWP access roads
  - All three realignment alternatives would require removal of the existing line in existing corridor and construction of the new line in a different corridor.
- **No Project Alternative:** Not building the project would prevent the implementation of the safety upgrades that are required by the CPUC and North American Electric Reliability Corporation



EIR Figure 4.1

# Realignment Alternatives:

Each would parallel the existing LADWP transmission lines about 200 feet to the west



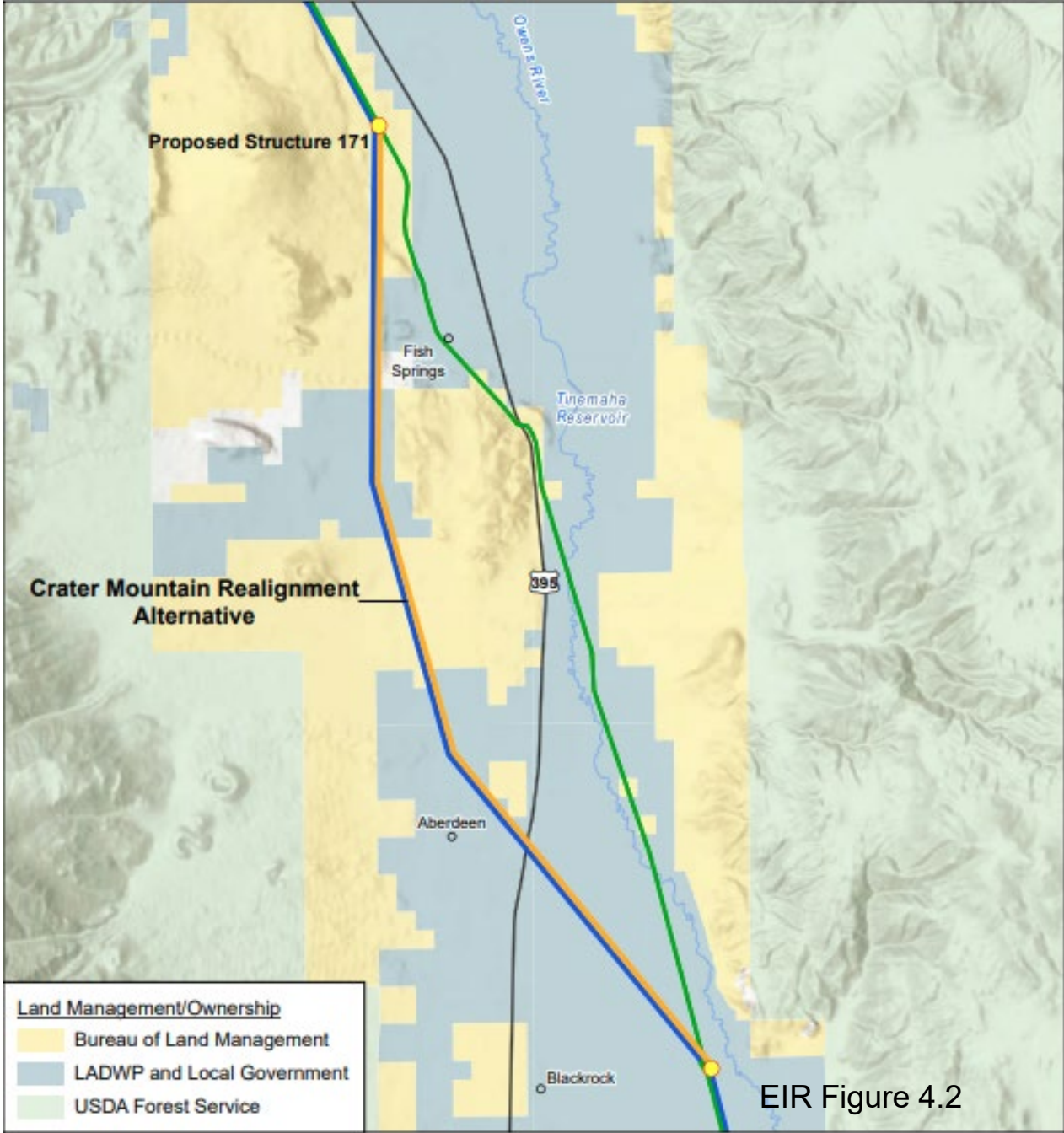
## LADWP Transmission Lines:

- **230 kV line** (on the left in these photos, which look from north to south) Barren Ridge to Inyo Subs
- **Pacific DC** (direct current) **Intertie** from the Bonneville Power Administration to LA



# EIR Alternatives: Crater Mountain Realignment Alternative Compared with Proposed Project

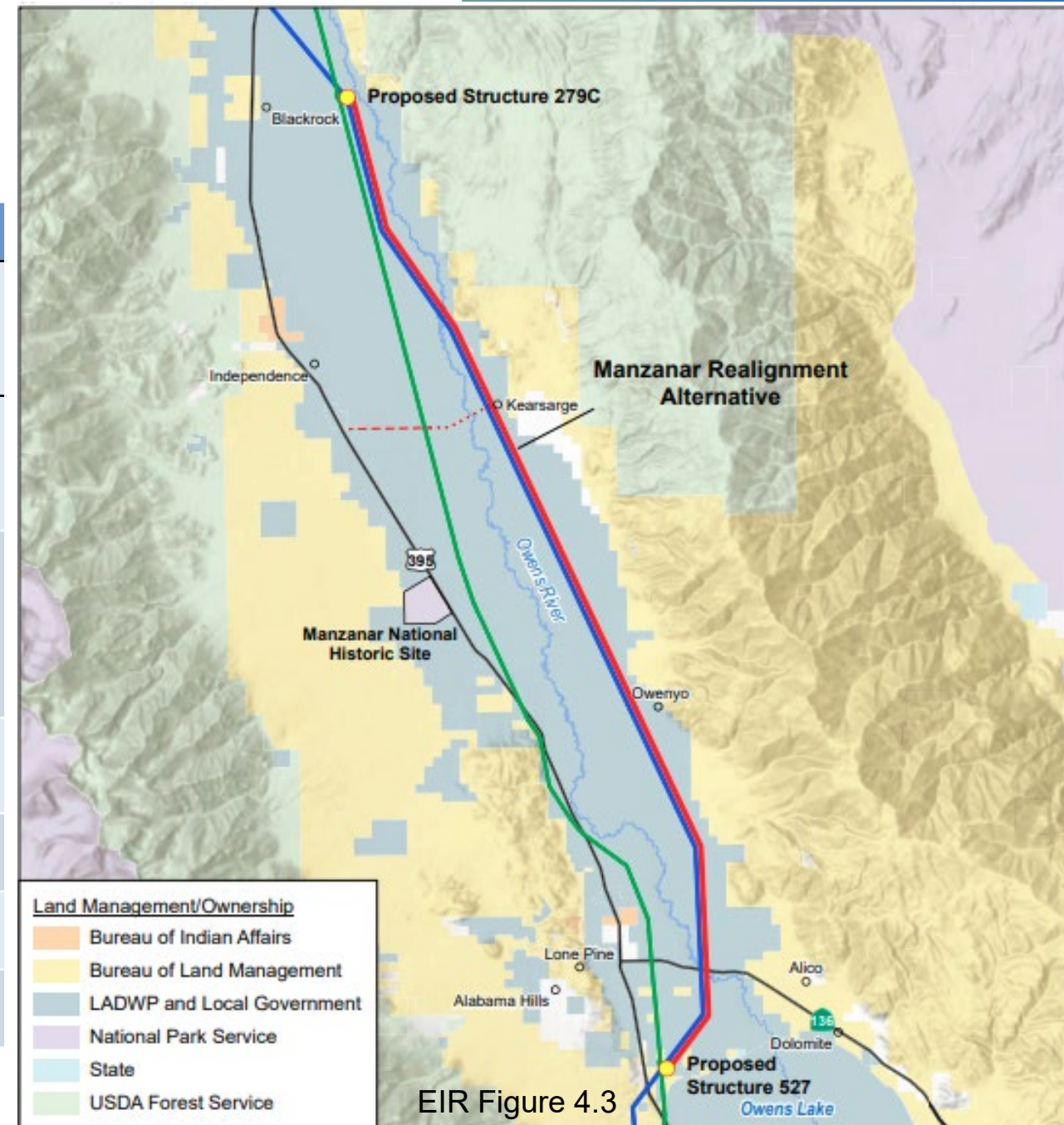
Discipline	Key Considerations
Description	<ul style="list-style-type: none"> <li>14 miles long; moves east of Tinemaha Reservoir and Fish Springs areas</li> </ul>
Aesthetic	<ul style="list-style-type: none"> <li>Alternative avoids scenic hwy (US 395)</li> </ul>
Biological	<ul style="list-style-type: none"> <li>Alternative reduces risk of avian collision, but would have more ground disturbance (2 ROWs)</li> </ul>
Cultural	<ul style="list-style-type: none"> <li>More ground disturbance (2 ROWs) but avoids ongoing disturbance in existing ROW</li> </ul>
Tribal Cultural	<ul style="list-style-type: none"> <li>Alternative avoids sensitive areas</li> </ul>
Geology	<ul style="list-style-type: none"> <li>More ground disturbance (2 ROWs)</li> </ul>
Hydrology	<ul style="list-style-type: none"> <li>More ground disturbance (2 ROWs)</li> </ul>
Recreation	<ul style="list-style-type: none"> <li>Alternative would affect Taboose Creek Campground</li> </ul>



EIR Figure 4.2

# EIR Alternatives: Manzanar Realignment Alternative compared with Proposed Project

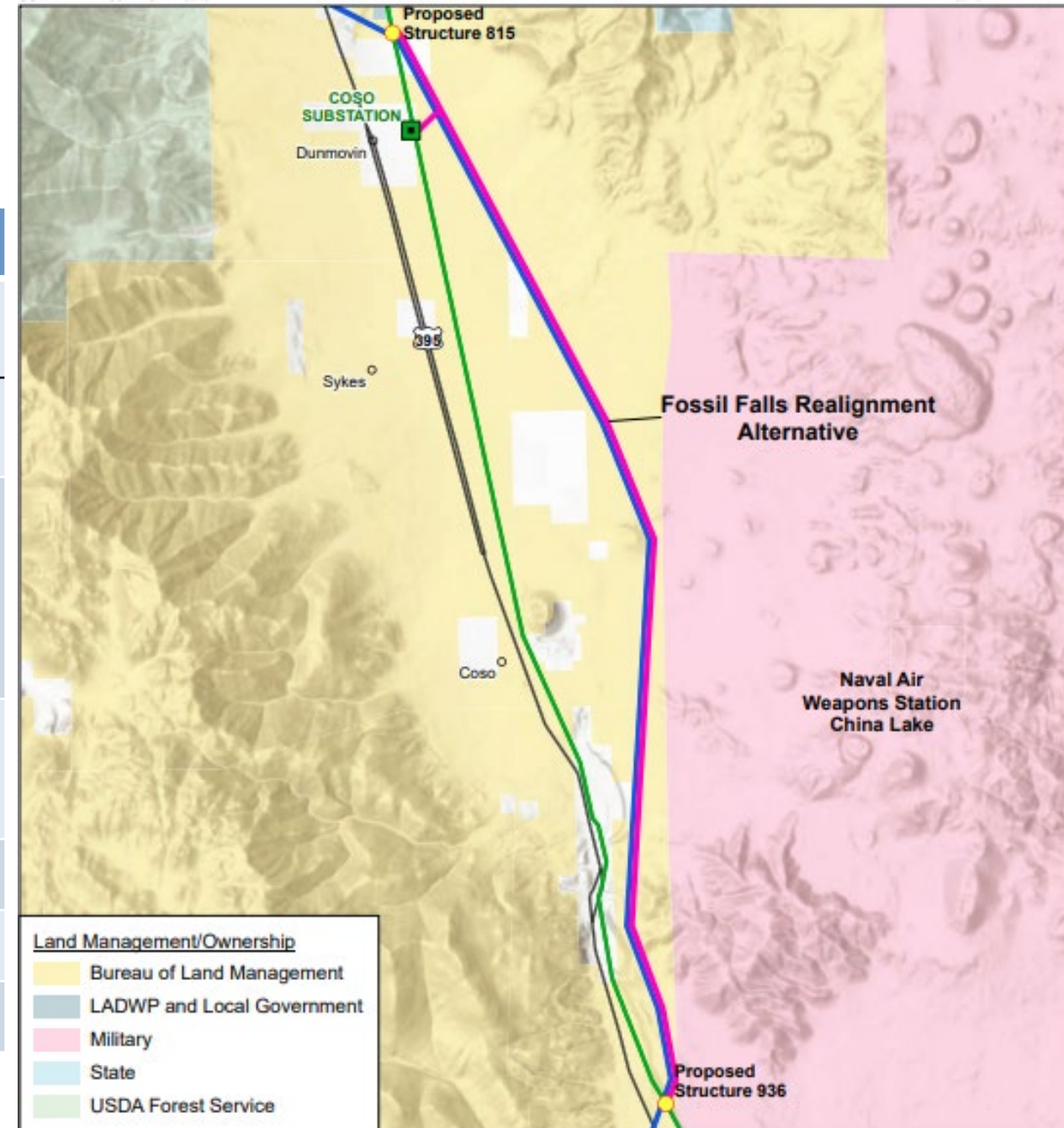
Discipline	Key Considerations
Description:	<ul style="list-style-type: none"> <li>30 miles long; moves 2 mile further east of Manzanar National Historic Site and east of Lone Pine</li> </ul>
Aesthetic	<ul style="list-style-type: none"> <li>Alternative removes existing line along scenic hwy (US 395) and near Manzanar National Historic Site</li> </ul>
Biological	<ul style="list-style-type: none"> <li>Increases impacts to jurisdictional wetlands and/or waters, and would result in more ground disturbance due to construction in 2 ROWs</li> </ul>
Cultural	<ul style="list-style-type: none"> <li>More ground disturbance (2 ROWs) but avoids ongoing disturbance in existing ROW</li> </ul>
Tribal Cultural	<ul style="list-style-type: none"> <li>Alternative avoids sensitive areas</li> </ul>
Geology	<ul style="list-style-type: none"> <li>More ground disturbance (2 ROWs)</li> </ul>
Hydrology	<ul style="list-style-type: none"> <li>More ground disturbance (2 ROWs)</li> </ul>



EIR Figure 4.3

# EIR Alternatives: Fossil Falls Realignment Alternative Compared with Proposed Project

Discipline	Key Considerations
Description:	<ul style="list-style-type: none"> <li>15 miles; avoids the Narrows, Little Lake, and Fossil Falls area</li> </ul>
Aesthetic	<ul style="list-style-type: none"> <li>Alternative removes existing line along scenic viewing areas</li> </ul>
Biological	<ul style="list-style-type: none"> <li>Alt removes line with and near Little Lake and wetlands, and reduces risk of avian collisions, but would have more total ground disturbance (due to 2 ROWs with construction)</li> </ul>
Cultural	<ul style="list-style-type: none"> <li>More ground disturbance (2 ROWs) but avoids ongoing disturbance in existing ROW</li> </ul>
Tribal Cultural	<ul style="list-style-type: none"> <li>Tribes expressed no preferences.</li> </ul>
Geology	<ul style="list-style-type: none"> <li>More ground disturbance (2 ROWs)</li> </ul>
Hydrology	<ul style="list-style-type: none"> <li>More ground disturbance (2 ROWs)</li> </ul>



# EIR Alternatives Considered & Eliminated

Alternative Considered	Rationale for Elimination
<p><b>Underground at Randsburg</b></p>	<p><b>CPUC Objectives:</b> Meets all project objectives.</p> <p><b>Feasibility:</b> Technically feasible.</p> <p><b>Impacts:</b> Would <u>not reduce or avoid</u> any significant impacts and would create potentially significant impacts itself.</p>
<p><b>Non-Wires Alternative</b></p>	<p><b>CPUC Objectives:</b> Would <u>not meet project objectives</u>.</p> <p><b>Feasibility:</b> Feasible but violates WECC mitigation plan.</p> <p><b>Impacts:</b> Modifications of the existing electrical system defined for the Proposed Project, and the associated impacts would not occur.</p>
<p><b>SCE Alternatives:</b></p> <ul style="list-style-type: none"> <li>• Decommission/remove existing lines</li> <li>• Increase voltage for Segment 2</li> <li>• Install energy storage</li> <li>• Derate lines only</li> <li>• Reconductor/remediate remaining GO 95 discrepancies</li> <li>• Derate/remediate remaining GO 95 discrepancies</li> </ul>	<p><b>CPUC Objectives:</b> Would <u>not meet project objectives</u>.</p> <p><b>Feasibility:</b> May be technically feasible.</p> <p><b>Impacts:</b> Limited or no potential to reduce or avoid environmental impacts.</p>

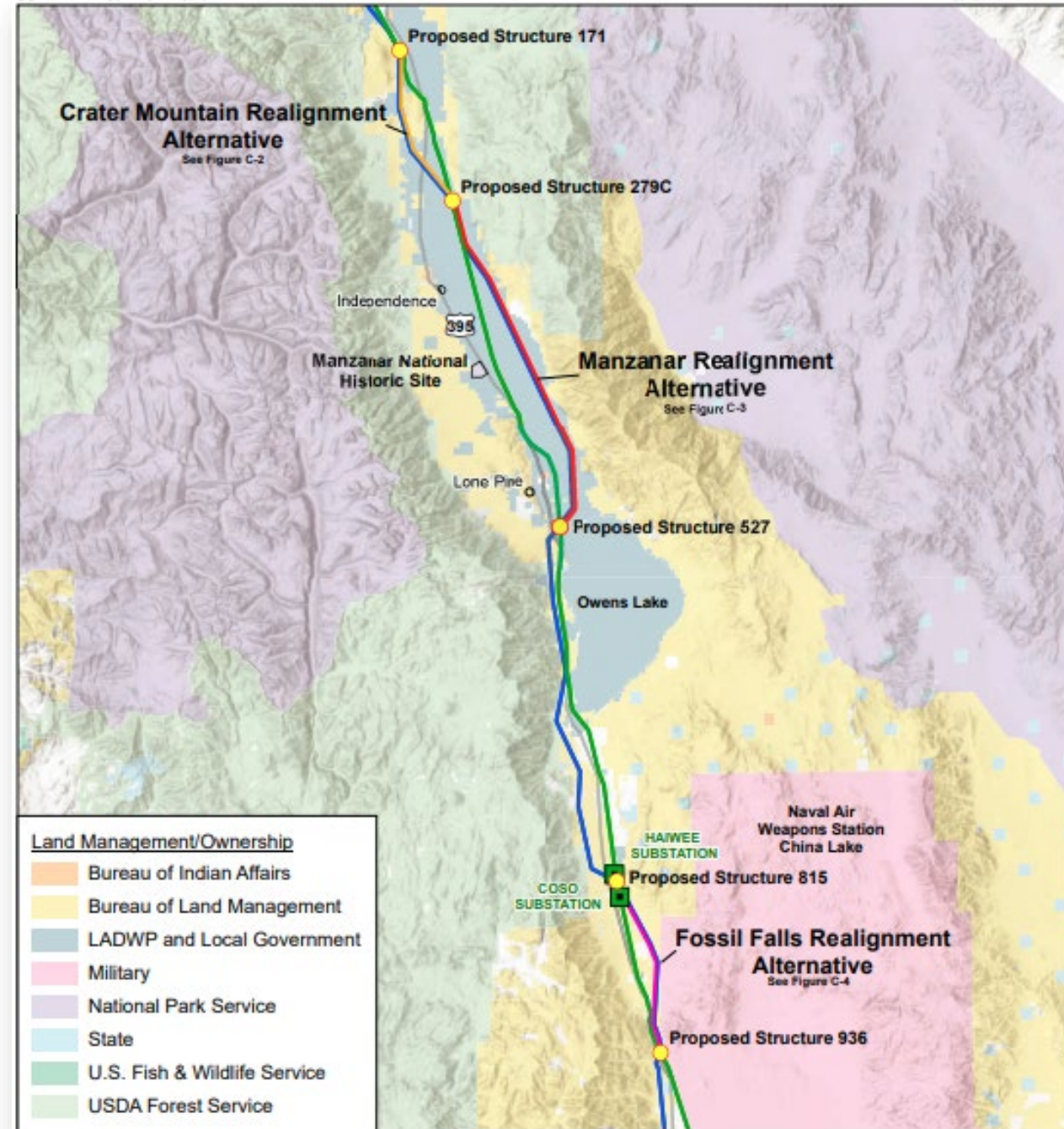
# CEQA Environmentally Superior Alternative

***The Proposed Project with inclusion of the three realignment alternatives (Crater Mountain, Manzanar, and Fossil Falls) is the Environmentally Superior Alternative for the following reasons:***

- Long-term permanent benefit to the aesthetic environment (removal of existing line along U.S. 395).
- Removal of existing line along nearly 60 miles of ROW and ceasing use of access roads; electric transmission lines would be consolidated in a single corridor, reducing ongoing effects on cultural and tribal cultural resources in the highly sensitive Owens Valley.
- Manzanar and Crater Mountain Realignment Alternatives would avoid areas important to the consulting Tribes.

# CEQA Environmentally Superior Alternative in Segment 1:

## Proposed Project with Crater Mountain, Manzanar, and Fossil Falls Realignment Alternatives





# Questions



# Public Comments

# How to Submit a Public Comment on Draft EIR

**E-mail:** [Ivanpah-Control@AspenEG.com](mailto:Ivanpah-Control@AspenEG.com)

**Address to:** John Forsythe, CPUC

**Subject line:** Draft EIR Comments

*Please be sure to include your name, address, and phone number on all comments.*

**Public Comment Deadline:** (5 p.m.) May 15, 2026

**Project Webpage:**

<https://ia.cpuc.ca.gov/environment/info/aspen/ivanpah-control/ivanpah-control.htm>

# Discussion Guidelines

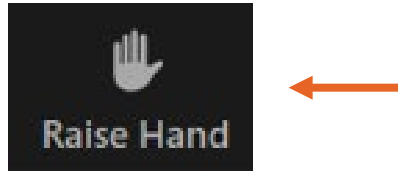
- Please state your name & affiliation
- Be concise
- Stay on topic
- Respect others' opinions
- Comments will be recorded
- Written comments are encouraged



# Public Comments

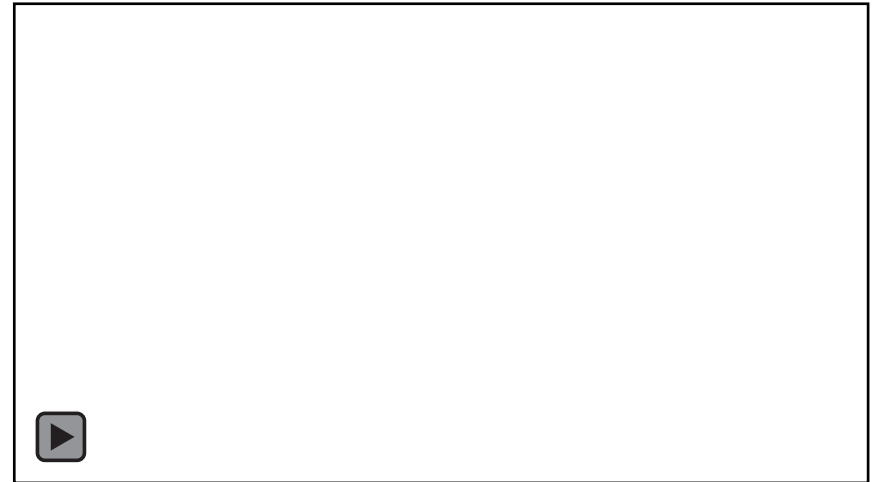
## Via the Zoom Platform

- Click the **RAISE HAND** icon to be called on



## By Telephone

- Dial \*9 to request to raise hand
- Dial \*6 to unmute yourself when asked



**Thank you for joining!**  
**Please submit your comments.**

**E-mail:** Ivanpah-Control@AspenEG.com

**Address to:** John Forsythe, CPUC

**Subject line:** Draft EIR Comments



**Draft EIR public comments will be accepted up to 5:00 P.M., May 15, 2026.**

**Webpage:** <https://ia.cpuc.ca.gov/environment/info/aspen/ivanpah-control/ivanpah-control.htm>