



HELICOPTER EXTERNAL LOAD OPERATION

CAP

NON CAP

PAGE 1 OF 10

DATE: February 14, 2011

FLY DATE: February 18, 2011 through June 18, 2011

<b>PROJECT NAME:</b> Bartlett Hauser # 201102181	<b>LOCATION:</b> N 32 38' 56.64" W 116 30' 13.75"
<b>LIFT DESCRIPTION, WEIGHTS, NUMBER OF LIFTS:</b> Multiple Tower Structures and related construction equipment flown from Bartlett/Hauser Fly yard in two directions- generally northeast and west. Weights between 15-18000lbs. CAP due to road crossings, proximity to homes.	
<b>OPERATORS SPECIFICS:</b> Erickson Air Crane 3100 Willow Springs Road Central Point, Oregon 97502 Ph. #1-800-866-9431 Fax # 541-664-7613 Certificate #E8KL899H	<b>CAP PREPARED BY:</b> Brad Warren <a href="mailto:bwarren@ericksonaircrane.com">bwarren@ericksonaircrane.com</a> #541-326-9448 Bill Neckels <a href="mailto:bneckels@ericksonaircrane.com">bneckels@ericksonaircrane.com</a> #541-326-9448
	<b>AIRCRAFT:</b> SK 64 F N237AC S/N: 64095 Airworthiness: Transport
<b>CUSTOMERS SPECIFICS:</b> San Diego Gas & Electric 8315 Century Park Ct. CP 21G San Diego, California 92123  Contact: Mike Manry <a href="mailto:mmanry@semprautilities.com">mmanry@semprautilities.com</a> Ph. # 619-851-4387 Fax# 858-637-	<b>FSDO SPECIFICS:</b>  FSDO 8525 Gibbs Drive Suite 120 San Diego, California 92123 Contact: Inspector James McNamara <a href="mailto:james.d.mcnamara@faa.gov">james.d.mcnamara@faa.gov</a> Ph. #858-502-9882 Ext.285 Fax # 858-502-9885

EXAMINED & APPROVED  
DATE FEB. 16, 2011  
BY   
FAA WPFSDO-09  
SAN DIEGO, CA



**HELICOPTER EXTERNAL LOAD OPERATION**

CAP

NON CAP

PAGE 2 OF 10

DATE: February 14, 2011

**PILOT DATA:**

Certificates and Medicals on file for: Brad Warren, Bill Neckels, Max Evans, Mike Connor, Vern Sanders, Dale Weir, Vic Johnson, Travis Harrold, Fran Tebbe, Mike Life, Jamie Fallon.

**LAW ENFORCEMENT AGENCIES CONTACTED:**

Courtesy call to San Diego County Sheriff  
Alpine Station  
1347 Tavern Road  
Alpine, CA 91901  
Dispatch 858-565-5200

**HIGHWAY/ROAD DEPT. AGENCIES CONTACTED:**

San Diego Public Works Permit for road crossings. PAR/SDGE responsibility.



## HELICOPTER EXTERNAL LOAD OPERATION

CAP

NON CAP

PAGE 3 OF 10

DATE: February 14, 2011

### PROCEDURES FOR CEASING OPERATIONS:

If a potential for a hazard should occur, the person(s) observing the hazard will notify the Erickson Air Crane (EAC) crew, the SDGE crew or the aircraft directly. Hazards could include, but are not limited to breach of the sterile area by any unauthorized persons and any other events that could cause danger to persons or property. The radioman will contact the pilot by radio and the operation will be suspended until the work environment is secured and safe.

### STERILE AREA & FLIGHT CORRIDORS

All non-essential persons will not be allowed inside the Sterile area. All personnel involved with the lift will be briefed on procedures and safety information prior to the commencement of the lift operations. In the case of operations in the flight corridors, flight crew will self clear the flight path enroute. The Flight Corridors allow for sufficient operational area to see and avoid intrusions in this space. In the event of an intrusion of the border of this area, Corridor allows a minimum of 300 feet clearance in order to avoid the intrusion. If unable, operations cease until rectified.

### FLIGHT NOTIFICATION TO FSDO:

Notification to the FSDO will be made to advise of specific flight operation dates within a range of dates specified in this plan. This can be an email or phone to call to advise that we will operate on a particular date. It is not necessary to receive a confirmation call back from the FSDO before operating. It is advisory in nature for the FSDO.

### REQUIRED SAFETY EQUIPMENT:

Hard hats, chin straps, eye protection, gloves, high visibility clothing.



## HELICOPTER EXTERNAL LOAD OPERATION

CAP

NON CAP

PAGE 4 OF 10

DATE: February 14, 2011

<b>ATTACHMENTS:</b>
---------------------

### BARTLETT/HAUSER PRE-OPERATIONS ACTION ITEMS:

- 1) Assure SD County Public Works road crossing permits complete.
- 2) Consideration for possible EP90 sensitive receptor. Check during a flyover. See attachment.
- 3) EP 93 appx. 200' from dirt road, check during flyover.
- 4) EP114/114 appx. 200' from La Posta Rd. Ensure traffic controls.
- 5) Multiple road crossings in Flight Corridors, ensure traffic controls and radio comms with traffic personnel.
- 6) Courtesy call on day of ops, not day before, to SD County Sheriff to their dispatch at 858-565-5200.
- 7) 5 day PUC notice done?



## HELICOPTER EXTERNAL LOAD OPERATION

CAP

NON CAP

PAGE 5 OF 10

DATE: February 14, 2011

ATTACHMENTS:

JOB DESCRIPTION	LOAD WT	LOAD & RTR WASH	ELEVATION	FLY DISTANCE
Bartlett/Hauser	15,500	17,500	4000'	6.5nm
	PA & TEMP	DA	HP AVAIL	TQ AVAIL
	4000' & 35C	7200'	7520hp	78.0
PERFORMANCE CALC		LIMIT CALC		
43,000		43,000		
FLIGHT PHASE	TIME			FUEL CALC
	In Minutes			At 550 Gal/hr.
START & LIFTOFF	10			FUEL REQ. 2542
OUTBOUND LEG	7			Min. Fuel 1000
SET	15			TOTAL LBS. FUEL 3542
INBOUND LEG	7			TOTAL GAL. FUEL 379
LANDING	2			FUEL/SIDE 1771
TOTAL TIME	41			
WEIGHT AND BALANCE				
	WEIGHT	ARM	MOMENT	
A/C Config. WT	22592	339.5	7669984	
FWD PILOT	400	94.0	37600	
AFT PILOT	200	130.0	26000	
JUMPSEAT		108.5	0	
FUEL FWD	1771	280.8	497297	
FUEL AFT	1771	397.3	703618	
FUEL AUX		461.3	0	
TOTALS	26300	334.1	8787351	
ADD LOAD	17,500	336.0	5880000	
Grand Total	43800	334.8	14163351	
TOTAL GROSS	43800	COMPARE TO LIMIT CALC		43,000
	Mode I		Mode II	
SUMMARY			NO GO	
SIGNATURE	Brad Warren			

This loading will still be acceptable as 1054 lbs. of fuel will be burned off before arrival at the farthest site. Therefore,  $43,800 - 1054 = 42,746$ , which is just under limit of 43,000lbs.



## HELICOPTER EXTERNAL LOAD OPERATION

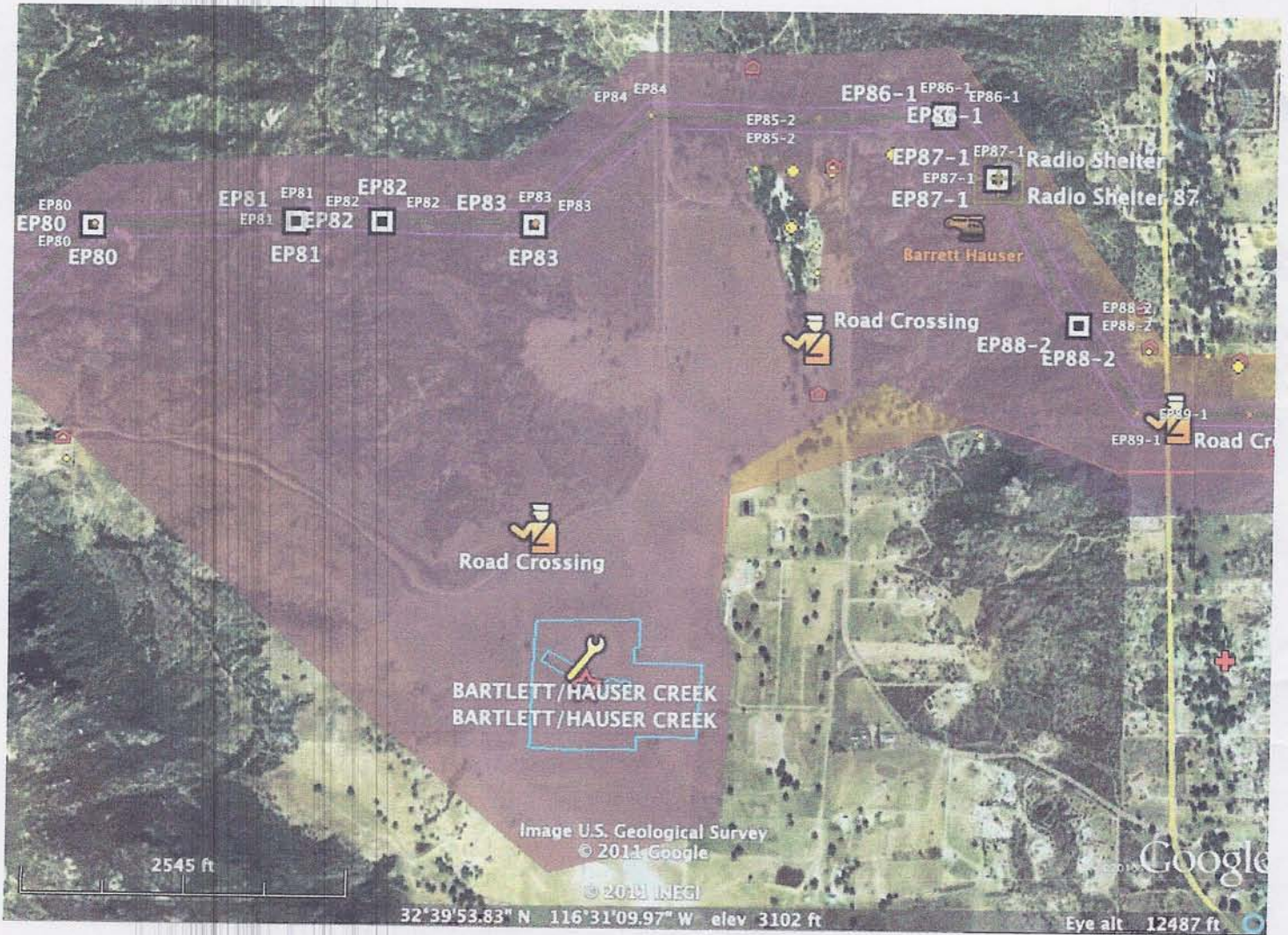
CAP

NON CAP

PAGE 7 OF 10

DATE: February 14, 2011

### ATTACHMENTS:

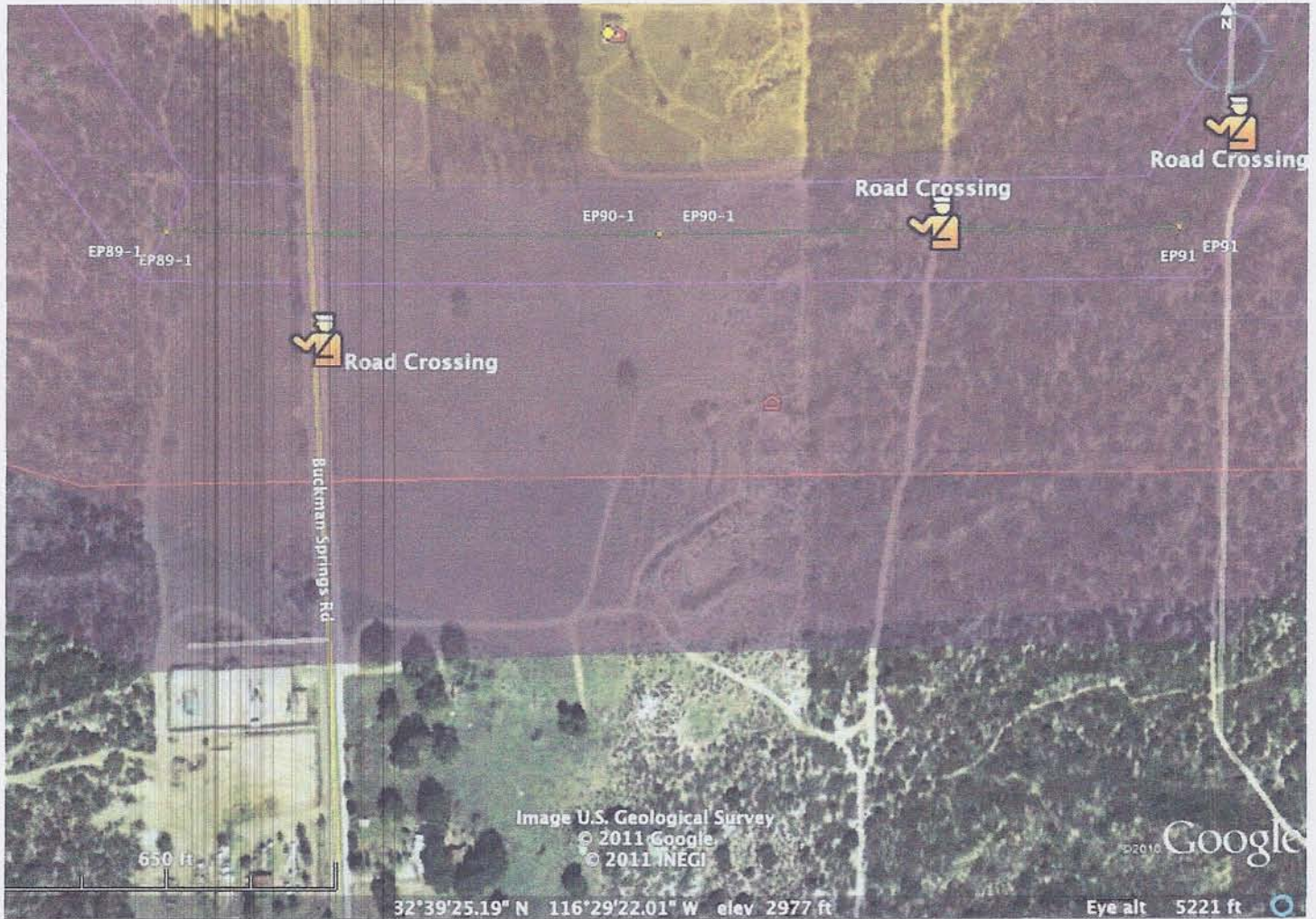


**BARTLETT/HAUSER FLY YARD**

CAP

NON CAP

**ATTACHMENTS:**



**EP 90 SENSITIVE RECEPTOR. REQUIRES NOTIFICATION.**

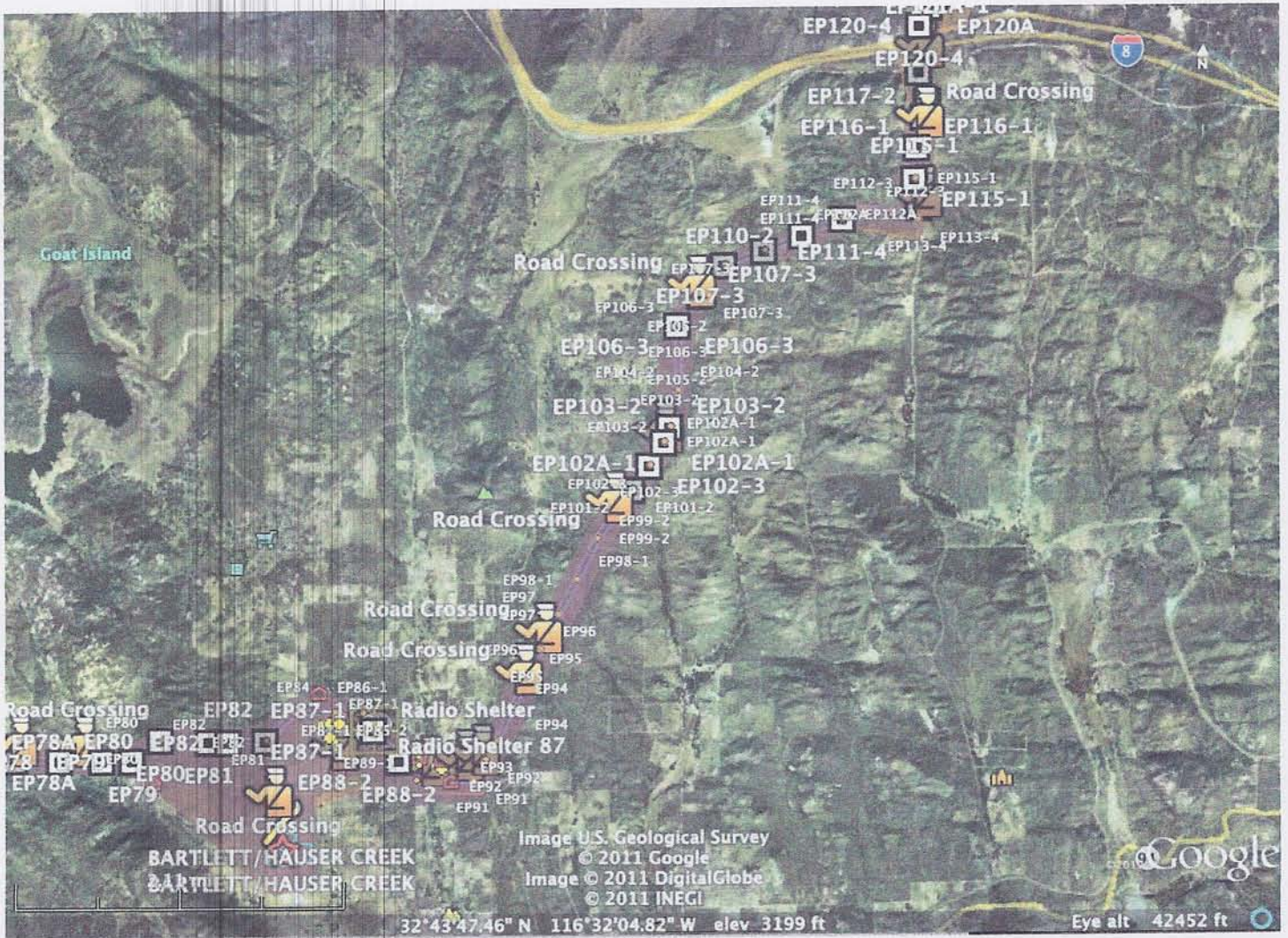


CAP  NON CAP

PAGE 9 OF 10

DATE: February 14, 2011

**ATTACHMENTS:**



**BARTLETT/HAUSER NORTHEAST BOUND**

## HELICOPTER EXTERNAL LOAD OPERATION

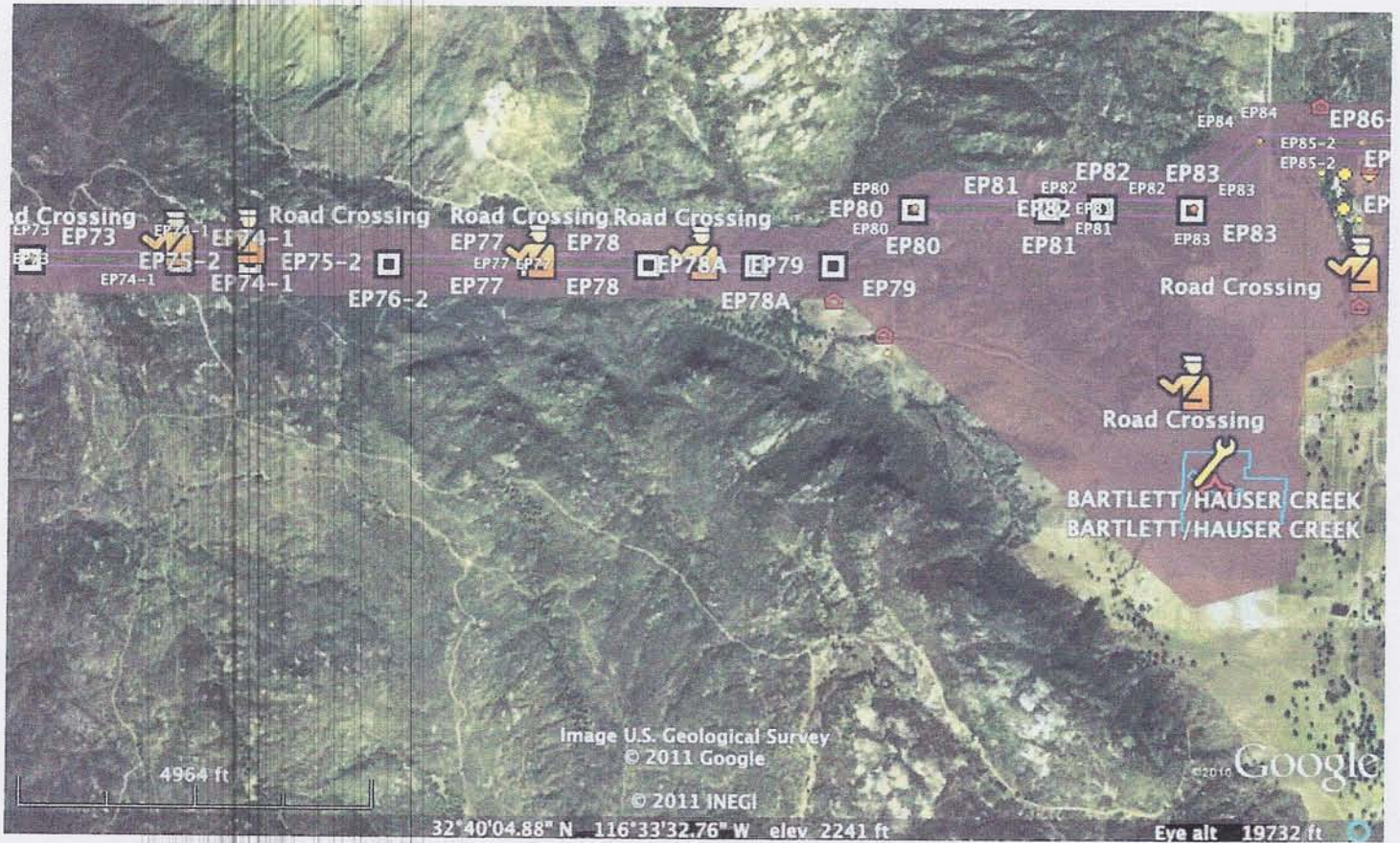
CAP

NON CAP

PAGE 10 OF 10

DATE: February 14, 2011

### ATTACHMENTS:



**BARTLETT/HAUSER WESTBOUND**