



**HELICOPTER EXTERNAL LOAD OPERATION**

CAP

NON CAP

PAGE 1 OF 10

DATE: February 15, 2011

PROPOSED FLY DATE: **February 21, 2011 through June 21, 2011**

<b>PROJECT NAME:</b> Hartung	<b>LOCATION:</b> N 32 53' 27.04" W 116 50' 17.28"
<b>LIFT DESCRIPTION, WEIGHTS, NUMBER OF LIFTS:</b> Multiple Tower Structures and related construction equipment flown from Hartung Fly yard in two directions- generally westbound, then east from the yard to El Capitan Reservoir then bending south to Hwy 8. Weights between 15-18000lbs. CAP due to road crossings, proximity to homes.	
<b>OPERATORS SPECIFICS:</b> Erickson Air Crane 3100 Willow Springs Road Central Point, Oregon 97502 Ph. #1-800-866-9431 Fax # 541-664-7613 Certificate #E8KL899H	<b>CAP PREPARED BY:</b> Brad Warren <a href="mailto:bwarren@ericksonaircrane.com">bwarren@ericksonaircrane.com</a> #541-326-9448 Bill Neckels <a href="mailto:bneckels@ericksonaircrane.com">bneckels@ericksonaircrane.com</a> #541-326-9448
	<b>AIRCRAFT:</b> SK 64 F N237AC S/N: 64095 Airworthiness: Transport
<b>CUSTOMERS SPECIFICS:</b> San Diego Gas & Electric 8315 Century Park Ct. CP 21G San Diego, California 92123  Contact: Mike Manry <a href="mailto:mmanry@semprautilities.com">mmanry@semprautilities.com</a> Ph. # 619-851-4387 Fax# 858-637-	<b>FSDO SPECIFICS:</b>  FSDO 8525 Gibbs Drive Suite 120 San Diego, California 92123 Contact: Inspector James McNamara <a href="mailto:james.d.mcnamara@faa.gov">james.d.mcnamara@faa.gov</a> Ph. #858-502-9882 Ext.285 Fax # 858-502-9885



**HELICOPTER EXTERNAL LOAD OPERATION**

CAP

NON CAP

PAGE 2 OF 10

DATE: February 14, 2011

**PILOT DATA:**

Certificates and Medicals on file for: Brad Warren, Bill Neckels, Max Evans, Mike Connor, Vern Sanders, Dale Weir, Vic Johnson, Travis Harrold, Fran Tebbe, Mike Life, Jamie Fallon.

**LAW ENFORCEMENT AGENCIES CONTACTED:**

Courtesy call to San Diego County Sheriff  
Alpine Station  
1347 Tavern Road  
Alpine, CA 91901  
Dispatch 858-565-5200  
Accomplished daily by Sunrise Base.

**HIGHWAY/ROAD DEPT. AGENCIES CONTACTED:**

San Diego Public Works Permit for road crossings. PAR/SDGE responsibility.



## HELICOPTER EXTERNAL LOAD OPERATION

CAP

NON CAP

PAGE 3 OF 10

DATE: February 15, 2011

### PROCEDURES FOR CEASING OPERATIONS:

If a potential for a hazard should occur, the person(s) observing the hazard will notify the Erickson Air Crane (EAC) crew, the SDGE crew or the aircraft directly. Hazards could include, but are not limited to breach of the sterile area by any unauthorized persons and any other events that could cause danger to persons or property. The radioman will contact the pilot by radio and the operation will be suspended until the work environment is secured and safe.

### STERILE AREA & FLIGHT CORRIDORS

All non-essential persons will not be allowed inside the Sterile area. All personnel involved with the lift will be briefed on procedures and safety information prior to the commencement of the lift operations. In the case of operations in the flight corridors, flight crew will self clear the flight path enroute. The Flight Corridors allow for sufficient operational area to see and avoid intrusions in this space. In the event of an intrusion of the border of this area, Corridor allows a minimum of 300 feet clearance in order to avoid the intrusion. If unable, operations cease until rectified.

### FLIGHT NOTIFICATION TO FSDO:

Notification to the FSDO will be made to advise of specific flight operation dates within a range of dates specified in this plan. This can be an email or phone to call to advise that we will operate on a particular date. It is not necessary to receive a confirmation call back from the FSDO before operating. It is advisory in nature for the FSDO.

### REQUIRED SAFETY EQUIPMENT:

Hard hats, chin straps, eye protection, gloves, high visibility clothing.



CAP

NON CAP

PAGE 4 OF 10

DATE: February 15, 2011

**ATTACHMENTS:**

**HARTUNG FLY YARD PRE OPERATIONS ACTION ITEMS**

- 1) **El Capitan reservoir- structures and road to the dam, traffic control and permits/notification as required.**
- 2) **Marina area - operations personnel at marina have been contacted. Agreed to closure or other possible mitigation on fly days. Flight ops might be on specific days. SDGE Contacts: Gerry Aiken and Lynn Trexel**
- 3) **Due to Eagle mitigation measures: additional Flight Corridors to accommodate. Requires crossing El Monte Rd. in two areas. Traffic controls need to be in effect.**
- 4) **Flight Corridors to be reconned before Crane flights.**



## HELICOPTER EXTERNAL LOAD OPERATION

CAP

NON CAP

PAGE 5 OF 10

DATE: February 15, 2011

<b>ATTACHMENTS:</b>
---------------------

<b>N237AC</b>	<b>SN: 64095</b>	<b>TYPE: SK64F</b>	
<b>JOB DESCRIPTION</b>	<b>LOAD WT</b>	<b>LOAD &amp; RTR WASH</b>	<b>ELEVATION</b>
<b>HARTUNG</b>	17,500	19,500	1500'
	<b>PA &amp; TEMP</b>	DA	<b>HP AVAIL</b>
	1500' & 40C	4600'	8080
			<b>FLY DISTANCE</b>
			3.8nm
			<b>TQ AVAIL</b>
			83.0
<b>PERFORMANCE CALC</b>		<b>LIMIT CALC</b>	
45,800		45,800	
<b>FLIGHT PHASE</b>	<b>TIME</b>	<b>FUEL CALC</b>	At 550 Gal/hr.
	In Minutes		
<b>START &amp; LIFTOFF</b>	10	<b>FUEL REQ.</b>	2108
<b>OUTBOUND LEG</b>	4	<b>Min. Fuel</b>	1000
SET	15	<b>TOTAL LBS. FUEL</b>	3108
<b>INBOUND LEG</b>	3	<b>TOTAL GAL. FUEL</b>	315
LANDING	2	<b>FUEL/SIDE</b>	1554
<b>TOTAL TIME</b>	34		
<b>WEIGHT AND BALANCE</b>			
	<b>WEIGHT</b>	<b>ARM</b>	<b>MOMENT</b>
<b>A/C Config. WT</b>	22592	339.5	7669984
<b>FWD PILOT</b>	400	94.0	37600
<b>AFT PILOT</b>	200	130.0	26000
<b>JUMPSEAT</b>		108.5	0
<b>FUEL FWD</b>	1554	280.8	436363
<b>FUEL AFT</b>	1554	397.3	617404
<b>FUEL AUX</b>		461.3	0
<b>TOTALS</b>	26300	334.1	8787351
<b>ADD LOAD</b>	19,500	336.0	6552000
<b>Grand Total</b>	45800	334.8	14163351
<b>TOTAL GROSS</b>	45800	<b>COMPARE TO LIMIT CALC</b>	45,800
	Mode I	29600	Mode II
<b>SUMMARY</b>			
<b>SIGNATURE</b>	Brad Warren		





CAP

NON CAP

**ATTACHMENTS:**





CAP

NON CAP

ATTACHMENTS:





ATTACHMENTS:



ATTACHMENTS:





**HELICOPTER EXTERNAL LOAD OPERATION**

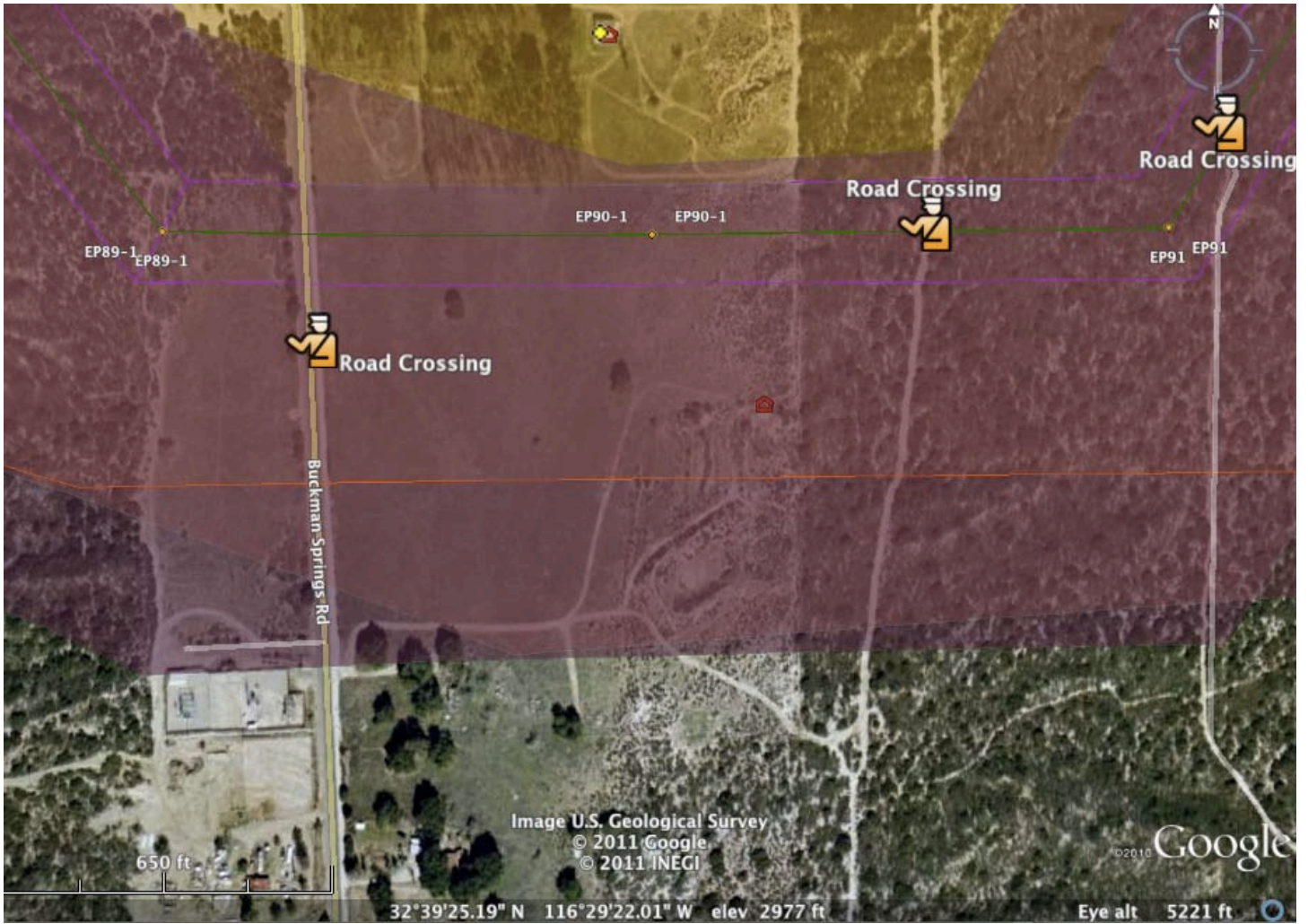
CAP  NON CAP

PAGE 8 OF 10

DATE: February 14, 2011

**ATTACHMENTS:**





**EP 90 SENSITIVE RECEPTOR. REQUIRES NOTIFICATION.**



### HELICOPTER EXTERNAL LOAD OPERATION

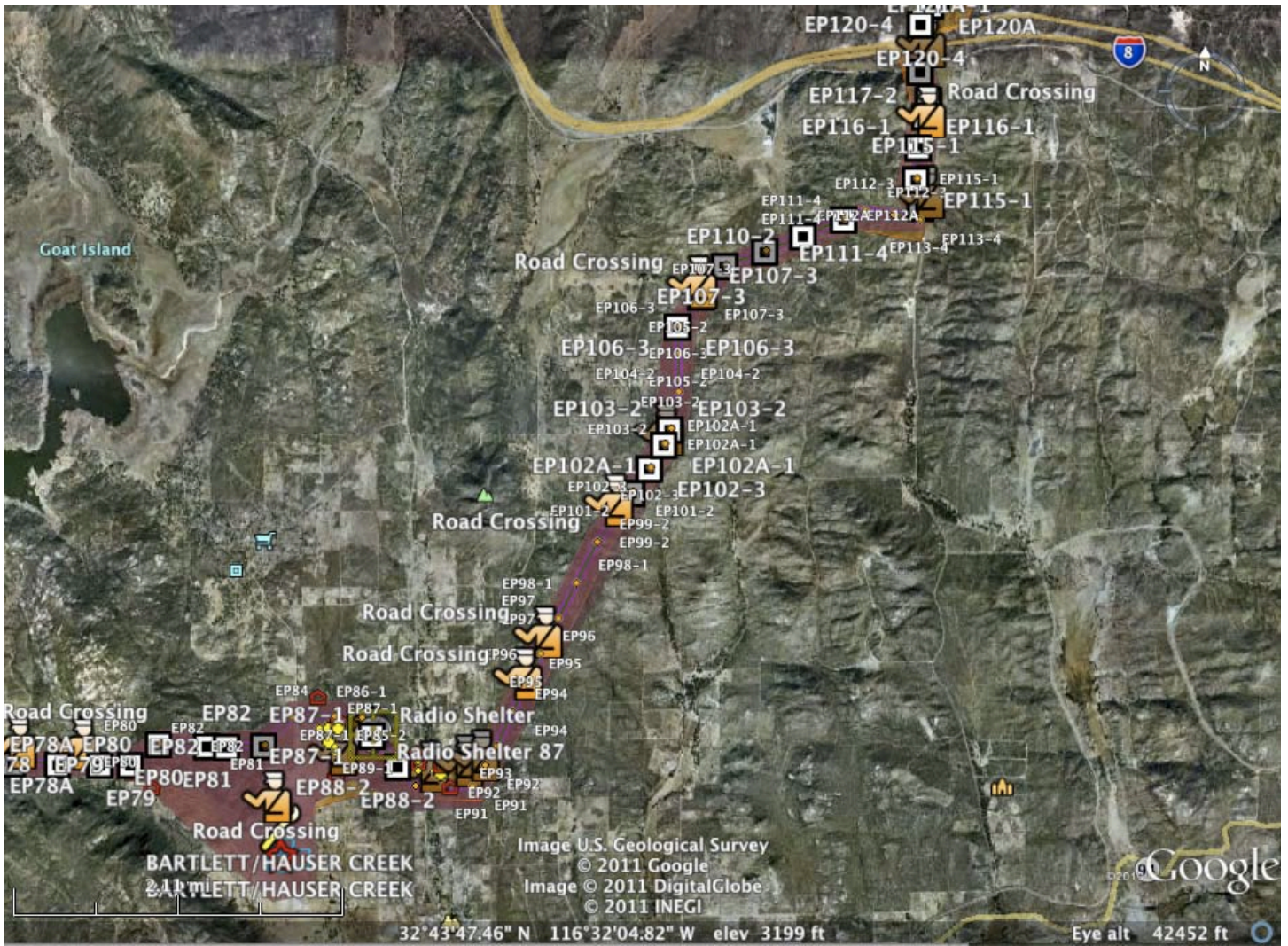
CAP  NON CAP

PAGE 9 OF 10

DATE: February 14, 2011

ATTACHMENTS:





**BARTLETT/HAUSER NORTHEAST BOUND**

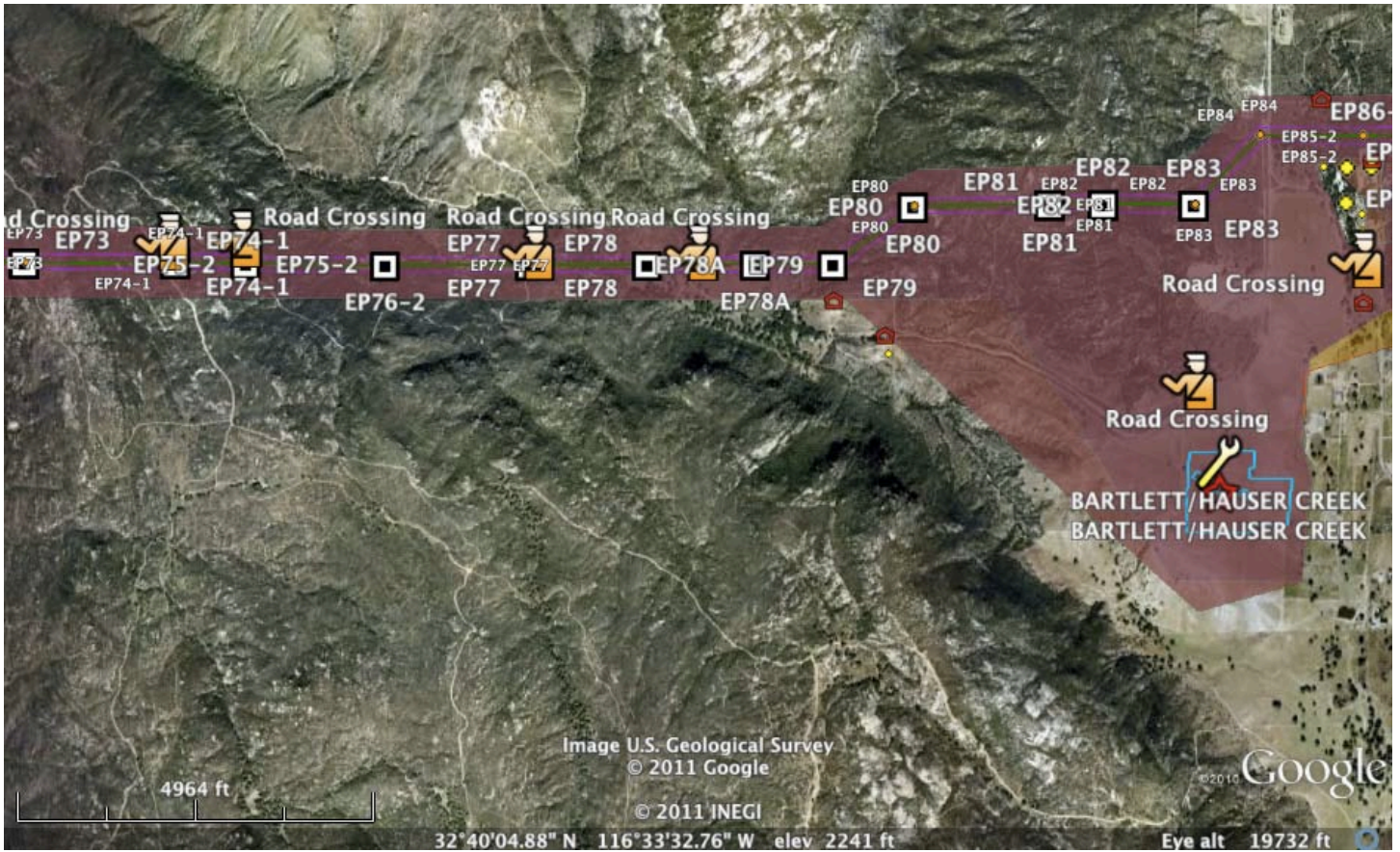


**HELICOPTER EXTERNAL LOAD OPERATION**

CAP  NON CAP

**ATTACHMENTS:**





**BARTLETT/HAUSER WESTBOUND**

