



HELICOPTER EXTERNAL LOAD OPERATION

CAP NON CAP

PAGE 1 OF 7

DATE: February 14, 2011

FLY DATE: February 18, 2011 through June 18, 2011

PROJECT NAME: Helix Fly Yard # 201102178	LOCATION: N 32 52' 09.29" W 116 53' 22.99"
LIFT DESCRIPTION, WEIGHTS, NUMBER OF LIFTS: Multiple Tower Structures and related construction equipment flown from Helix Fly yard in two directions- generally east and west. Weights between 15-18000lbs. CAP due to road crossings, proximity to homes/structures near the fly yard.	
OPERATORS SPECIFICS: Erickson Air Crane 3100 Willow Springs Road Central Point, Oregon 97502 Ph. #1-800-866-9431 Fax # 541-664-7613 Certificate #E8KL899H	CAP PREPARED BY: Brad Warren bwarren@ericksonaircrane.com #541-326-9448 Bill Neckels bneckels@ericksonaircrane.com #541-326-9448
	AIRCRAFT: SK 64 F N237AC S/N: 64095 Airworthiness: Transport
CUSTOMERS SPECIFICS: San Diego Gas & Electric 8315 Century Park Ct. CP 21G San Diego, California 92123 Contact: Mike Manry mmanry@semprautilities.com Ph. # 619-851-4387 Fax# 858-637-	FSDO SPECIFICS: FSDO 8525 Gibbs Drive Suite 120 San Diego, California 92123 Contact: Inspector James McNamara James.d.mcnamara@faa.gov Ph. #858-502-9882 Ext.285 Fax # 858-502-9885

EXAMINED & APPROVED

DATE FEB. 16, 2011

BY

FAA WPFSDO-09

SAN DIEGO, CA



HELICOPTER EXTERNAL LOAD OPERATION

CAP NON CAP

PAGE 2 OF 7

DATE: February 14, 2011

PILOT DATA:

Certificates and Medicals on file for: Brad Warren, Bill Neckels, Max Evans, Mike Connor, Vern Sanders, Dale Weir, Vic Johnson, Travis Harrold, Fran Tebbe, Mike Life, Jamie Fallon.

LAW ENFORCEMENT AGENCIES CONTACTED:

Courtesy call to San Diego County Sheriff
Alpine Station
1347 Tavern Road
Alpine, CA 91901
619-659-2600

HIGHWAY/ROAD DEPT. AGENCIES CONTACTED:

San Diego Public Works Permit for road crossings. PAR/SDGE responsibility.



HELICOPTER EXTERNAL LOAD OPERATION

CAP

NON CAP

PAGE 3 OF 7

DATE: February 14, 2011

PROCEDURES FOR CEASING OPERATIONS:

If a potential for a hazard should occur, the person(s) observing the hazard will notify the Erickson Air Crane (EAC) crew, the SDGE crew or the aircraft directly. Hazards could include, but are not limited to breach of the sterile area by any unauthorized persons and any other events that could cause danger to persons or property. The radioman will contact the pilot by radio and the operation will be suspended until the work environment is secured and safe.

STERILE AREA & FLIGHT CORRIDORS

All non-essential persons will not be allowed inside the Sterile area. All personnel involved with the lift will be briefed on procedures and safety information prior to the commencement of the lift operations. In the case of operations in the flight corridors, flight crew will self clear the flight path enroute. The Flight Corridors allow for sufficient operational area to see and avoid intrusions in this space. In the event of an intrusion of the border of this area, Corridor allows a minimum of 300 feet clearance in order to avoid the intrusion. If unable, operations cease until rectified.

FLIGHT NOTIFICATION TO FSDO:

Notification to the FSDO will be made to advise of specific flight operation dates within a range of dates specified in this plan. This can be an email or phone to call to advise that we will operate on a particular date. It is not necessary to receive a confirmation call back from the FSDO before operating. It is advisory in nature for the FSDO.

REQUIRED SAFETY EQUIPMENT:

Hard hats, chin straps, eye protection, gloves, high visibility clothing.



HELICOPTER EXTERNAL LOAD OPERATION

CAP

NON CAP

PAGE 4 OF 7

DATE: February 14, 2011

ATTACHMENTS:

HELIX FLY YARD PRE-OPERATIONS ACTION ITEMS

- 1) Traffic controls required for Wildcat Canyon Rd., north of the Helix Fly yard.
- 2) 5 day PUC notifications/Gerry Aiken
- 3) Consideration for Moreno Dr. crossing, or flying over San Vincente Reservoir. If over the reservoir will there be boat traffic? Controls? Or if crossing Moreno Dr. traffic controls.
- 4) Also, notification/coordination with apparent dam construction/modification project, if we are to fly directly across.
- 5) Courtesy call to SD county sheriff 858-565-5200
- 6) **IMPORTANT:** remain 500' away from lat/long 32° 52' 40.6302 -116° 52' 59.0484. This sensitive receptor was the location of the Parrot incident.



HELICOPTER EXTERNAL LOAD OPERATION

CAP

NON CAP

PAGE 5 OF 7

DATE: February 14, 2011

ATTACHMENTS:

N: 237AC		SN: 64095		TYPE: SK64F	
JOB DESCRIPTION	LOAD WT	LOAD & RTR WASH	ELEVATION	FLY DISTANCE	
Helix Yard	17,000	19,000	1500'	4.5nm	
	PA & TEMP	DA	HP AVAIL	TQ AVAIL	
	1500' & 38C	4600'	7900hp	82%	
PERFORMANCE CALC			LIMIT CALC		
45,800			45,800		
FLIGHT PHASE	TIME			FUEL CALC	At 550 Gal/hr.
	In Minutes				
START & LIFTOFF	10			FUEL REQ.	2150
OUTBOUND LEG	4			Min. Fuel	1000
SET	15			TOTAL LBS. FUEL	3150
INBOUND LEG	4			TOTAL GAL. FUEL	321
LANDING	2			FUEL/SIDE	1575
TOTAL TIME	35				
WEIGHT AND BALANCE					
	WEIGHT	ARM	MOMENT		
A/C Config. WT	22,592	339.5	7669984		
FWD PILOT	400	94.0	37600		
AFT PILOT	200	130.0	26000		
JUMPSEAT		108.5	0		
FUEL FWD	1575	280.8	442202		
FUEL AFT	1575	397.3	625665		
FUEL AUX		461.3	0		
TOTALS	26342	334.1	8801450		
ADD LOAD	19,000	333.0	6327000		
Grand Total	45342	333.7	15128450		
TOTAL GROSS	45342	COMPARE TO LIMIT CALC		45800	
SUMMARY	GO				
SIGNATURE	Brad Warren				

CAP

NON CAP

ATTACHMENTS:

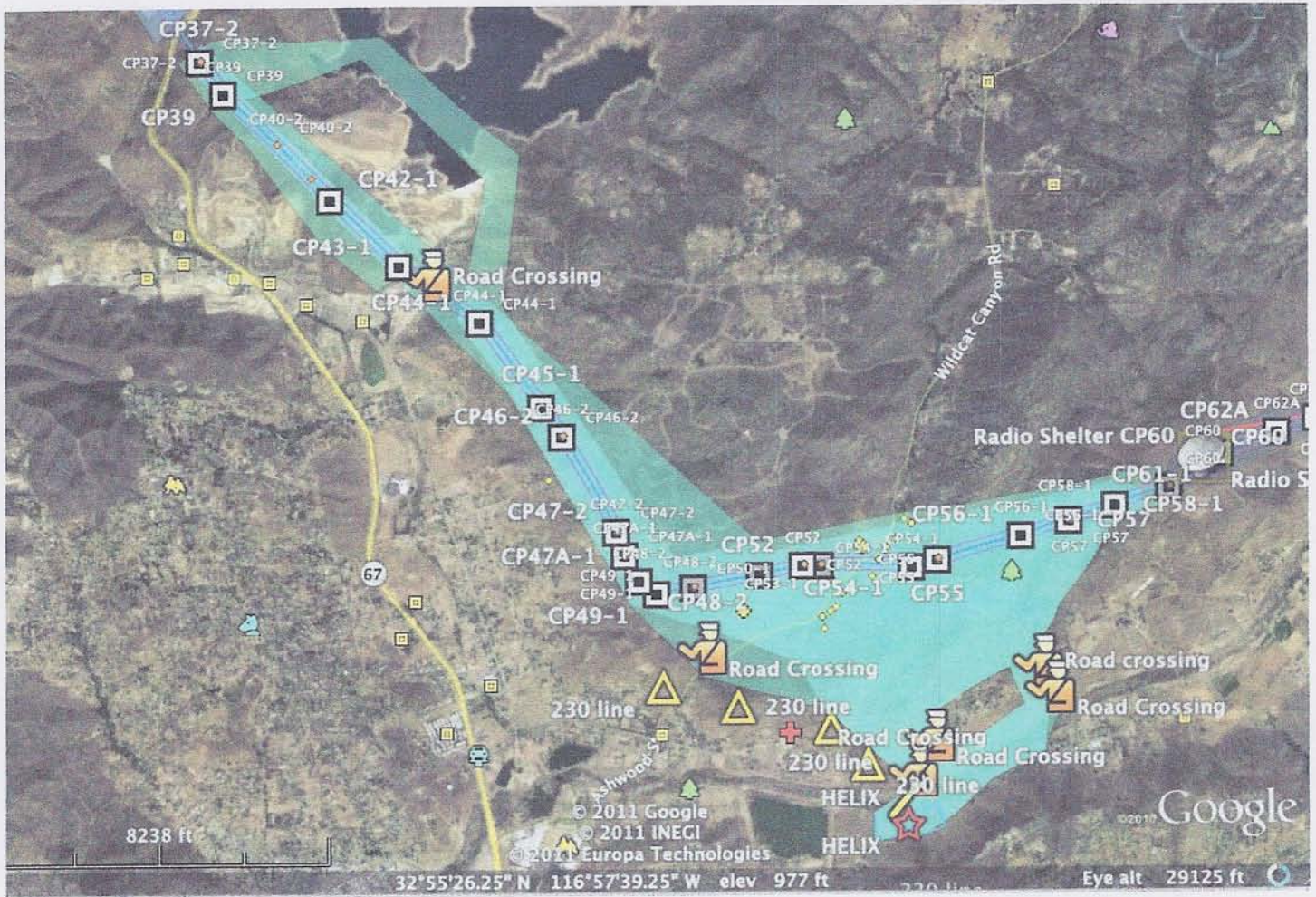


HELIX FLY YARD OVERVIEW

CAP

NON CAP

ATTACHMENTS:



HELIX FLIGHT CORRIDOR OVERVIEW