



HELICOPTER EXTERNAL LOAD OPERATION

CAP NON CAP PAGE 1 OF 9 DATE: February 22, 2011

PROPOSED FLY DATE: March 1, 2011 through July 1, 2011

PROJECT NAME: Kreutzkamp # 201102227	LOCATION: N 32 43' 11.63" W 116 36' 59.5"
LIFT DESCRIPTION, WEIGHTS, NUMBER OF LIFTS: Multiple Tower Structures and related construction equipment flown from Kreutzkamp Fly yard in two directions- generally westbound, and eastbound. Weights between 15-18000lbs. NON CAP due to no major county roads in Flight Corridors. Numerous small dirt roads and trails in area and normal precautions implemented, see and avoid in the Flight Corridor. Reference "STERILE AREA & FLIGHT CORRIDORS" on page 3.	
OPERATORS SPECIFICS: Erickson Air Crane 3100 Willow Springs Road Central Point, Oregon 97502 Ph. #1-800-866-9431 Fax # 541-664-7613 Certificate #E8KL899H	CAP PREPARED BY: Brad Warren bwarren@ericksonaircrane.com #541-326-9448 Bill Neckels bneckels@ericksonaircrane.com #541-326-9448
	AIRCRAFT: SK 64 F N237AC S/N: 64095 Airworthiness: Transport
CUSTOMERS SPECIFICS: San Diego Gas & Electric 8315 Century Park Ct. CP 21G San Diego, California 92123 Contact: Mike Manry mmanry@semprautilities.com Ph. # 619-851-4387 Fax# 858-637-	FSDO SPECIFICS: FSDO 8525 Gibbs Drive Suite 120 San Diego, California 92123 Contact: Inspector James McNamara james.d.mcnamara@faa.gov Ph. #858-502-9882 Ext.285 Fax # 858-502-9885

EXAMINED & ACCEPTED
DATE FEB. 24, 2011
BY *[Signature]*
FAA FSDO WP-09
SAN DIEGO, CA



HELICOPTER EXTERNAL LOAD OPERATION

CAP

NON CAP

PAGE 2 OF 9

DATE: February 22, 2011

PILOT DATA:

Certificates and Medicals on file for: Brad Warren, Bill Neckels, Max Evans, Mike Connor, Vern Sanders, Dale Weir, Vic Johnson, Travis Harrold, Fran Tebbe, Mike Life, Jamie Fallon.

LAW ENFORCEMENT AGENCIES CONTACTED:

**Courtesy call to San Diego County Sheriff
Alpine Station
1347 Tavern Road
Alpine, CA 91901
Dispatch 858-565-5200
Accomplished daily by Sunrise Base.**

HIGHWAY/ROAD DEPT. AGENCIES CONTACTED:

San Diego Public Works Permit for road crossings. PAR/SDGE responsibility.



HELICOPTER EXTERNAL LOAD OPERATION

CAP

NON CAP

PAGE 3 OF 9

DATE: February 22, 2011

PROCEDURES FOR CEASING OPERATIONS:

If a potential for a hazard should occur, the person(s) observing the hazard will notify the Erickson Air Crane (EAC) crew, the SDGE crew or the aircraft directly. Hazards could include, but are not limited to breach of the sterile area by any unauthorized persons and any other events that could cause danger to persons or property. The radioman will contact the pilot by radio and the operation will be suspended until the work environment is secured and safe.

STERILE AREA & FLIGHT CORRIDORS

All non-essential persons will not be allowed inside the Sterile area. All personnel involved with the lift will be briefed on procedures and safety information prior to the commencement of the lift operations. In the case of operations in the flight corridors, flight crew will self clear the flight path enroute. The Flight Corridors allow for sufficient operational area to see and avoid intrusions in this space. In the event of an intrusion of the border of this area, Corridor allows a minimum of 300 feet clearance in order to avoid the intrusion. If unable, operations cease until rectified.

FLIGHT NOTIFICATION TO FSDO:

Notification to the FSDO will be made to advise of specific flight operation dates within a range of dates specified in this plan. This can be an email or phone to call to advise that we will operate on a particular date. It is not necessary to receive a confirmation call back from the FSDO before operating. It is advisory in nature for the FSDO.

REQUIRED SAFETY EQUIPMENT:

Hard hats, chin straps, eye protection, gloves, high visibility clothing.



HELICOPTER EXTERNAL LOAD OPERATION

CAP

NON CAP

PAGE 4 OF 9

DATE: February 22, 2011

ATTACHMENTS:

KREUTZKAMP YARD PRE OPERATIONS ACTION ITEMS

- 1) **Confirm chicken farm is abandoned/inactive.**
- 2) **5 day PUC notices?**
- 3) **Road Controls?**
- 4) **Recon flight before Crane flights**



HELICOPTER EXTERNAL LOAD OPERATION

CAP

NON CAP

PAGE 5 OF 9

DATE: February 22, 2011

ATTACHMENTS:

JOB DESCRIPTION	LOAD WT	LOAD & RTR WASH	ELEVATION	FLY DISTANCE
Kreutzcamp	14,176	16,176	3200'	3.2NM
	PA & TEMP	DA	HP AVAIL	TQ AVAIL
	3200' @ 38°	6500'	7560	79.0%
PERFORMANCE CALC		LIMIT CALC		
43000		43100		
FLIGHT PHASE	TIME		FUEL CALC	At 550 Gal/hr.
	In Minutes			
START & LIFTOFF	15		FUEL REQ.	2395
OUTBOUND LEG	4		Min. Fuel	1000
SET	15		TOTAL LBS. FUEL	3395
INBOUND LEG	3		TOTAL GAL. FUEL	358
LANDING	2		FUEL/SIDE	1698
TOTAL TIME	39			
WEIGHT AND BALANCE				
	WEIGHT	ARM	MOMENT	
A/C Config. WT	22829	333.9	7623060	
FWD PILOTS (2)	400	94.0	37600	
AFT PILOT	200	130.0	26000	
JUMPSEAT	0	108.5	0	
FUEL FWD	1698	280.8	476693	
FUEL AFT	1698	397.3	674466	
FUEL AUX	0	461.3	0	
TOTALS	26824	329.5	8837819	
ADD LOAD	16,176	333.0	5386608	
Grand Total	43000	330.8	14224427	
TOTAL GROSS	43000	COMPARE TO LIMIT CALC		43000
	Mode I	28000	Mode II	33100
SUMMARY	GO			
SIGNATURE	Victor Johnson			

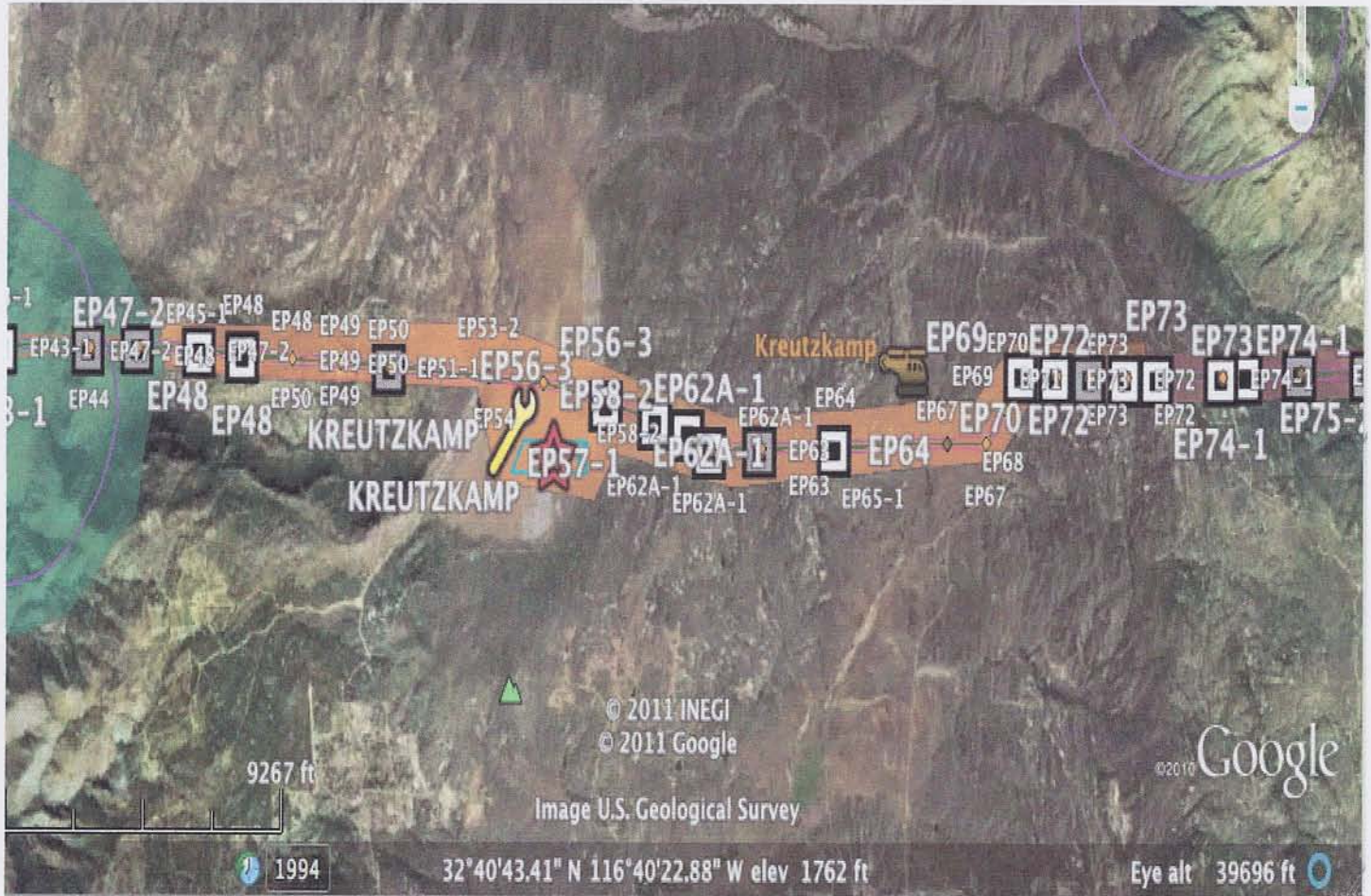
CAP

NON CAP

PAGE 6 OF 9

DATE: February 22, 2011

ATTACHMENTS:



Kreuzkamp Overview

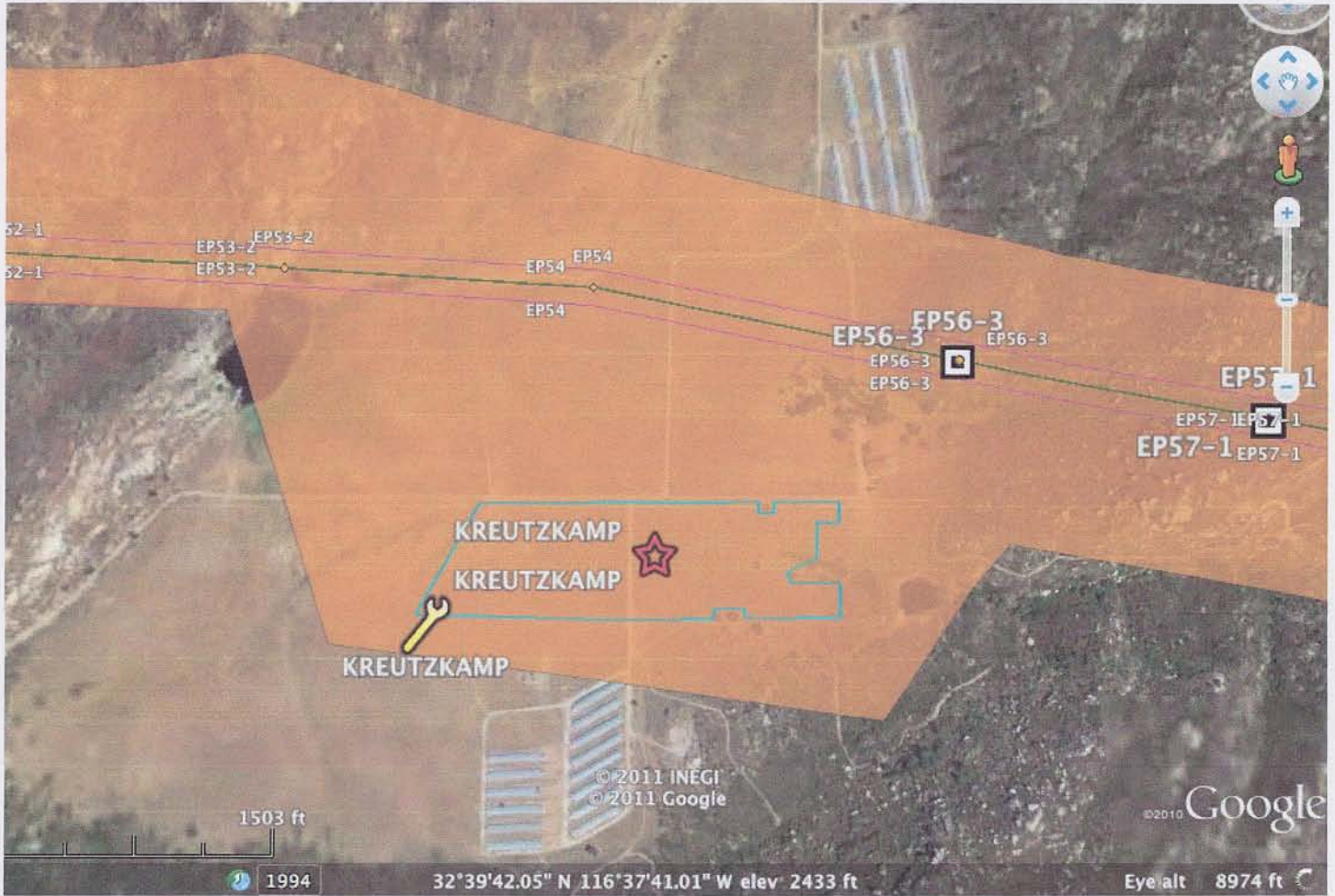
CAP

NON CAP

PAGE 7 OF 9

DATE: February 22, 2011

ATTACHMENTS:



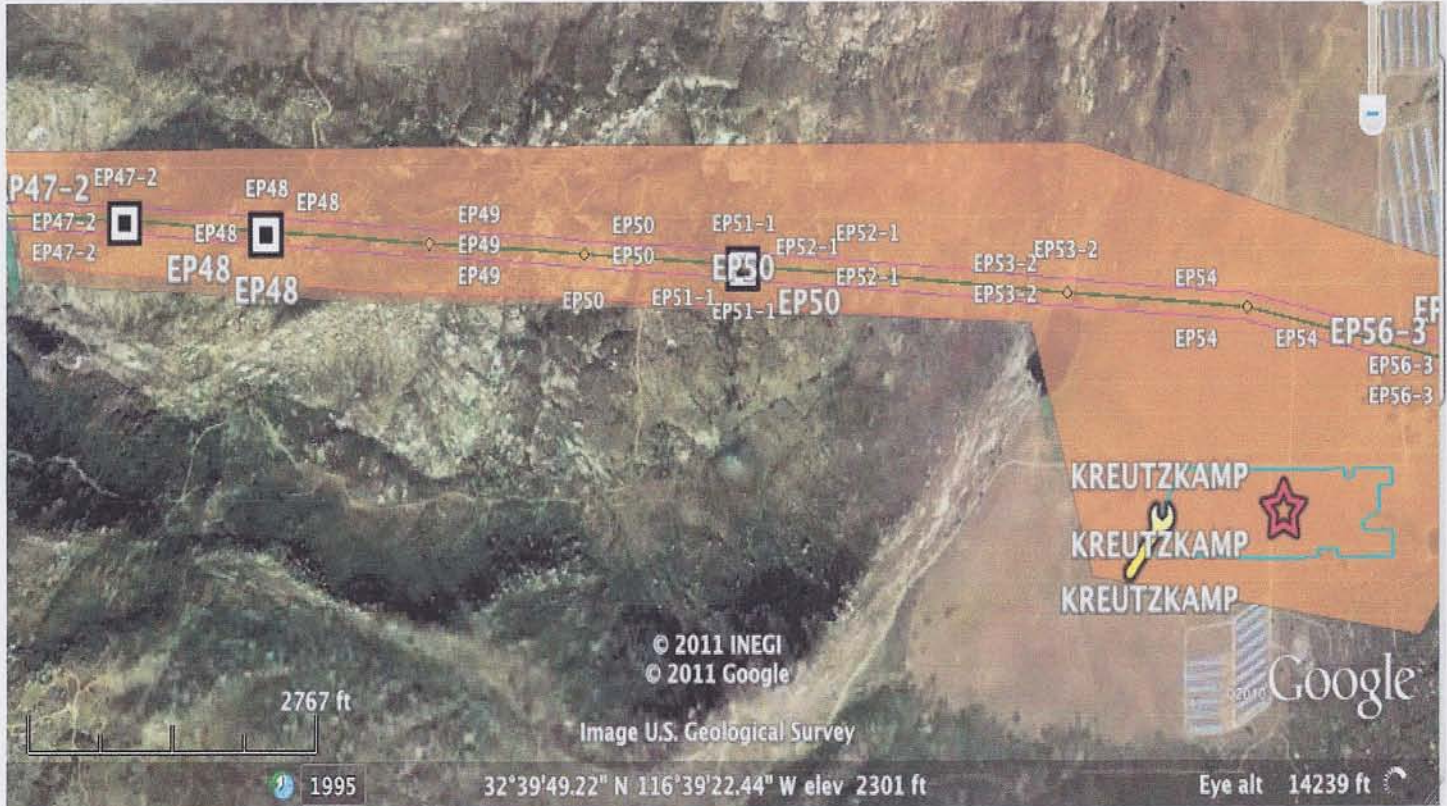
Kreuzkamp Fly Yard Detail

HELICOPTER EXTERNAL LOAD OPERATION

CAP NON CAP PAGE 8 OF 9

DATE: February 22, 2011

ATTACHMENTS:



Kreuzkamp Westbound Flight Corridor

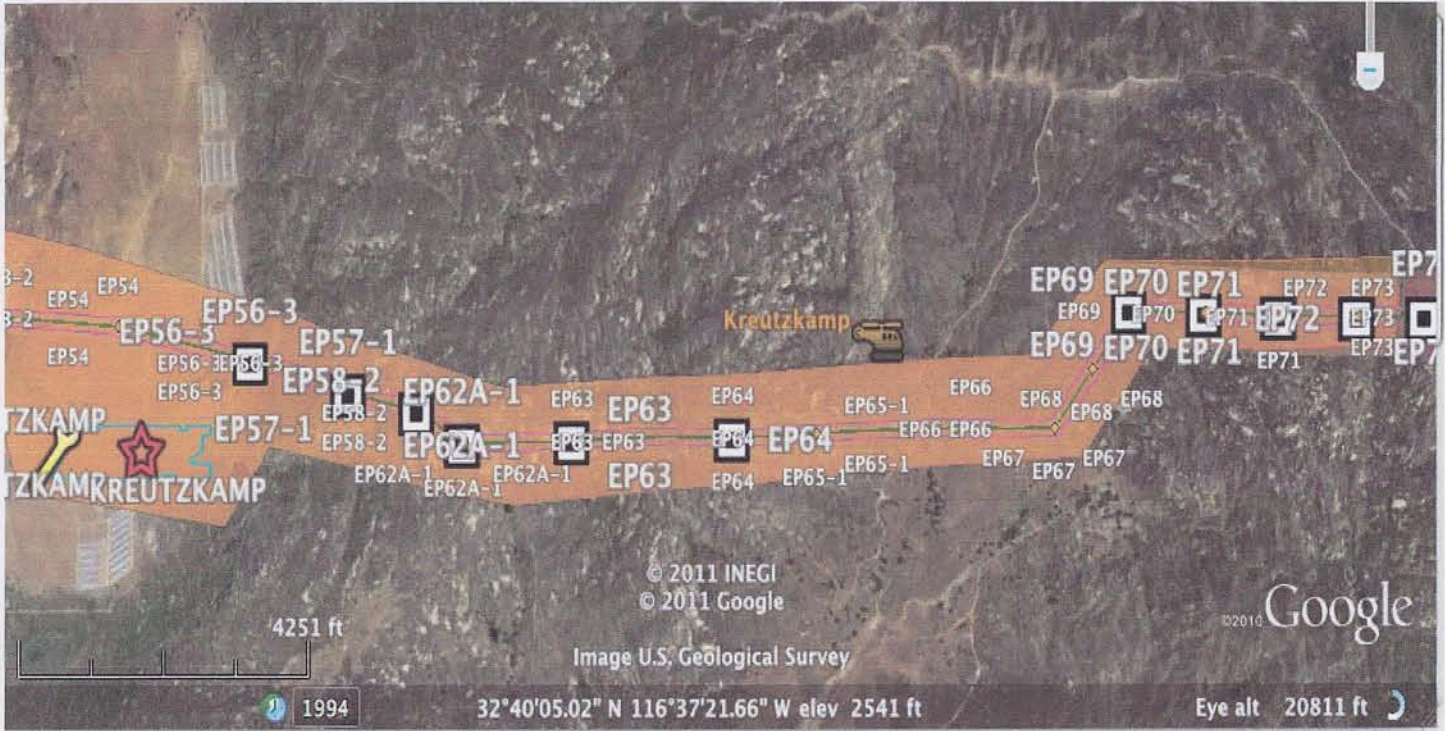
CAP

NON CAP

PAGE 9 OF 9

DATE: February 22, 2011

ATTACHMENTS:



Kreutzkamp Eastbound Flight Corridor