



HELICOPTER EXTERNAL LOAD OPERATION

CAP

NON CAP

PAGE 1 OF 9

DATE: February 16, 2011

PROPOSED FLY DATE: February 23, 2011 through June 23, 2011

<b>PROJECT NAME:</b> McCain Valley Fly Yard # 201102180	<b>LOCATION:</b> N 32 46' 21.13 W 116 18' 40.51
<b>LIFT DESCRIPTION, WEIGHTS, NUMBER OF LIFTS:</b> Multiple Tower Structures and related construction equipment flown from McCain Fly yard in two directions- generally northwest, and southeast from the yard. Weights between 15-18000lbs. CAP due to road crossings.	
<b>OPERATORS SPECIFICS:</b> Erickson Air Crane 3100 Willow Springs Road Central Point, Oregon 97502 Ph. #1-800-866-9431 Fax # 541-664-7613 Certificate #E8KL899H	<b>CAP PREPARED BY:</b> Brad Warren <a href="mailto:bwarren@ericksonaircrane.com">bwarren@ericksonaircrane.com</a> #541-326-9448 Bill Neckels <a href="mailto:bneckels@ericksonaircrane.com">bneckels@ericksonaircrane.com</a> #541-326-9448
	<b>AIRCRAFT:</b> SK 64 F N237AC S/N: 64095 Airworthiness: Transport
<b>CUSTOMERS SPECIFICS:</b> San Diego Gas & Electric 8315 Century Park Ct. CP 21G San Diego, California 92123  Contact: Mike Manry <a href="mailto:mmanry@semprautilities.com">mmanry@semprautilities.com</a> Ph. # 619-851-4387 Fax# 858-637-	<b>FSDO SPECIFICS:</b> FSDO 8525 Gibbs Drive Suite 120 San Diego, California 92123 Contact: Inspector James McNamara <a href="mailto:james.d.mcnamara@faa.gov">james.d.mcnamara@faa.gov</a> Ph. #858-502-9882 Ext.285 Fax # 858-502-9885

EXAMINED & APPROVED  
DATE FEB. 16, 2011  
BY *[Signature]*  
FAA WPFSDO-09  
SAN DIEGO, CA



**HELICOPTER EXTERNAL LOAD OPERATION**

CAP

NON CAP

PAGE 2 OF 9

DATE: February 16, 2011

**PILOT DATA:**

Certificates and Medicals on file for: Brad Warren, Bill Neckels, Max Evans, Mike Connor, Vern Sanders, Dale Weir, Vic Johnson, Travis Harrold, Fran Tebbe, Mike Life, Jamie Fallon.

**LAW ENFORCEMENT AGENCIES CONTACTED:**

Courtesy call to San Diego County Sheriff  
Alpine Station  
1347 Tavern Road  
Alpine, CA 91901  
Dispatch 858-565-5200  
Accomplished daily by Sunrise Base.

**HIGHWAY/ROAD DEPT. AGENCIES CONTACTED:**

San Diego Public Works Permit for road crossings. PAR/SDGE responsibility.



## HELICOPTER EXTERNAL LOAD OPERATION

CAP  NON CAP

PAGE 3 OF 9

DATE: February 16, 2011

### PROCEDURES FOR CEASING OPERATIONS:

If a potential for a hazard should occur, the person(s) observing the hazard will notify the Erickson Air Crane (EAC) crew, the SDGE crew or the aircraft directly. Hazards could include, but are not limited to breach of the sterile area by any unauthorized persons and any other events that could cause danger to persons or property. The radioman will contact the pilot by radio and the operation will be suspended until the work environment is secured and safe.

### STERILE AREA & FLIGHT CORRIDORS

All non-essential persons will not be allowed inside the Sterile area. All personnel involved with the lift will be briefed on procedures and safety information prior to the commencement of the lift operations. In the case of operations in the flight corridors, flight crew will self clear the flight path enroute. The Flight Corridors allow for sufficient operational area to see and avoid intrusions in this space. In the event of an intrusion of the border of this area, Corridor allows a minimum of 300 feet clearance in order to avoid the intrusion. If unable, operations cease until rectified.

### FLIGHT NOTIFICATION TO FSDO:

Notification to the FSDO will be made to advise of specific flight operation dates within a range of dates specified in this plan. This can be an email or phone to call to advise that we will operate on a particular date. It is not necessary to receive a confirmation call back from the FSDO before operating. It is advisory in nature for the FSDO.

### REQUIRED SAFETY EQUIPMENT:

Hard hats, chin straps, eye protection, gloves, high visibility clothing.



**HELICOPTER EXTERNAL LOAD OPERATION**

CAP

NON CAP

PAGE 4 OF 9

DATE: February 16, 2011

**ATTACHMENTS:**

**McCain Valley Pre Operations Action Items**

- 1) Consider traffic controls for Lost Valley Road near EP 184-1 and McCain Valley Rd. near EP 190. Check with PAR, their responsibility.
- 2) Recon flight required before operations.

## HELICOPTER EXTERNAL LOAD OPERATION

CAP

NON CAP

PAGE 5 OF 9

DATE: February 16, 2011

ATTACHMENTS:

JOB DESCRIPTION	LOAD WT	LOAD & RTR WASH	ELEVATION	FLY DISTANCE
McCain Valley	13,000	14,750	5600'	3.2NM
	PA & TEMP	DA	HP AVAIL	TQ AVAIL
	5600'@32°	8800	7300	
PERFORMANCE CALC		LIMIT CALC		74.0%
41500		41000		
FLIGHT PHASE	TIME	FUEL CALC		At 550 Gal/hr.
	In Minutes			
START & LIFTOFF	10	FUEL REQ.		2088
OUTBOUND LEG	4	Min. Fuel		1000
SET	15	TOTAL LBS. FUEL		3088
INBOUND LEG	3	TOTAL GAL. FUEL		312
LANDING	2	FUEL/SIDE		1544
TOTAL TIME	34			
WEIGHT AND BALANCE				
	WEIGHT	ARM	MOMENT	
A/C Config. WT	22688	333.9	7575977	
FWD PILOTS (2)	400	94.0	37600	
AFT PILOT	200	130.0	26000	
JUMPSEAT	0	108.5	0	
FUEL FWD	1544	280.8	433579	
FUEL AFT	1544	397.3	613464	
FUEL AUX	0	461.3	0	
TOTALS	26376	329.3	8686620	
ADD LOAD	14,750	333.0	4911750	
Grand Total	41126	330.7	13598370	
TOTAL GROSS	41126	COMPARE TO LIMIT CALC		41000
SUMMARY				<b>NO GO</b>

Loading is acceptable as 868lbs. of fuel will be consumed before arrival at set site.  $41126 - 868 = 40258$ . Summary: Gross weight of 40,258 at arrival at set site is 742 lbs. less than limit.

CAP

NON CAP

PAGE 6 OF 9

DATE: February 16, 2011

### ATTACHMENTS:

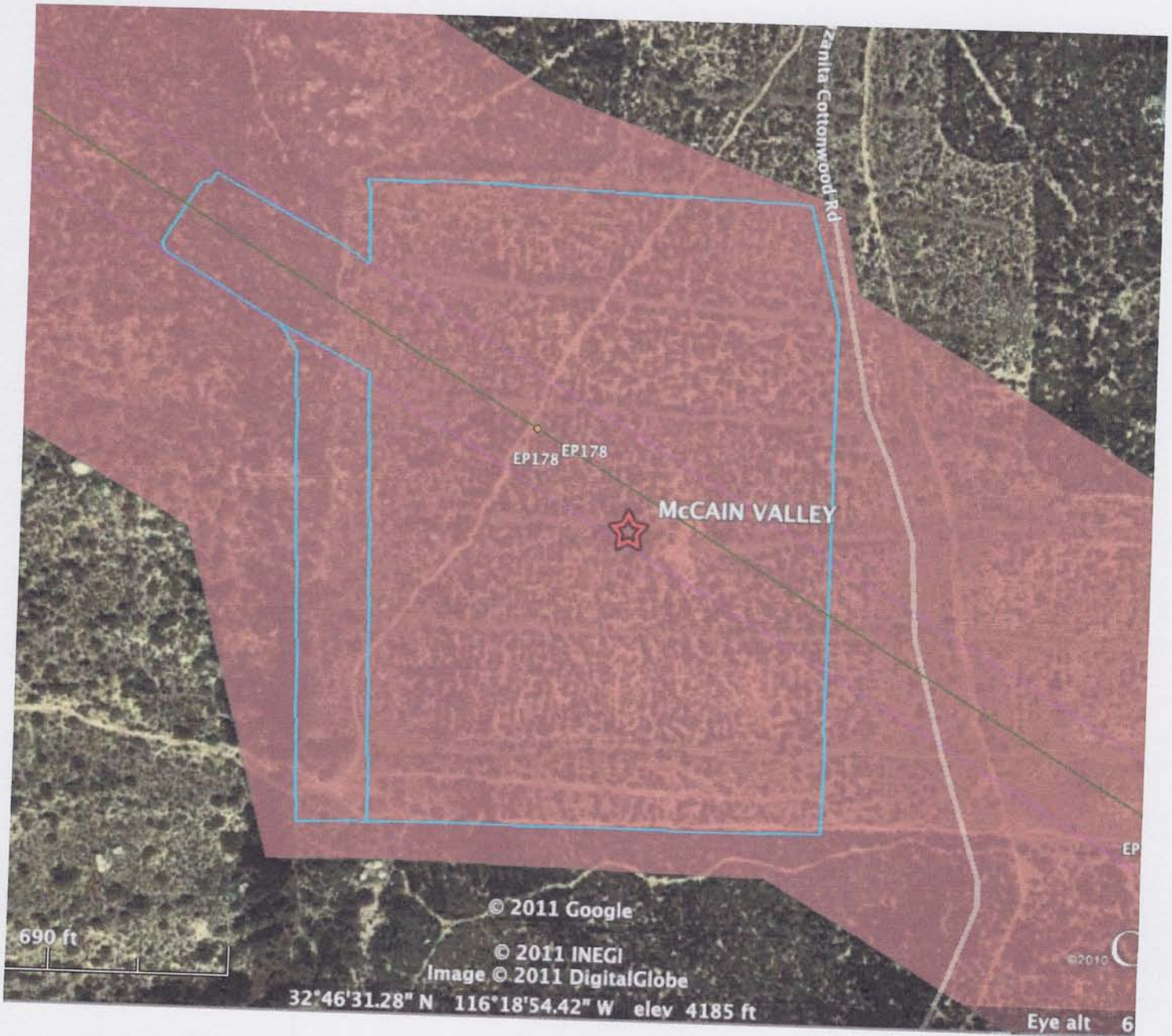


McCain Valley Overview

CAP

NON CAP

ATTACHMENTS:



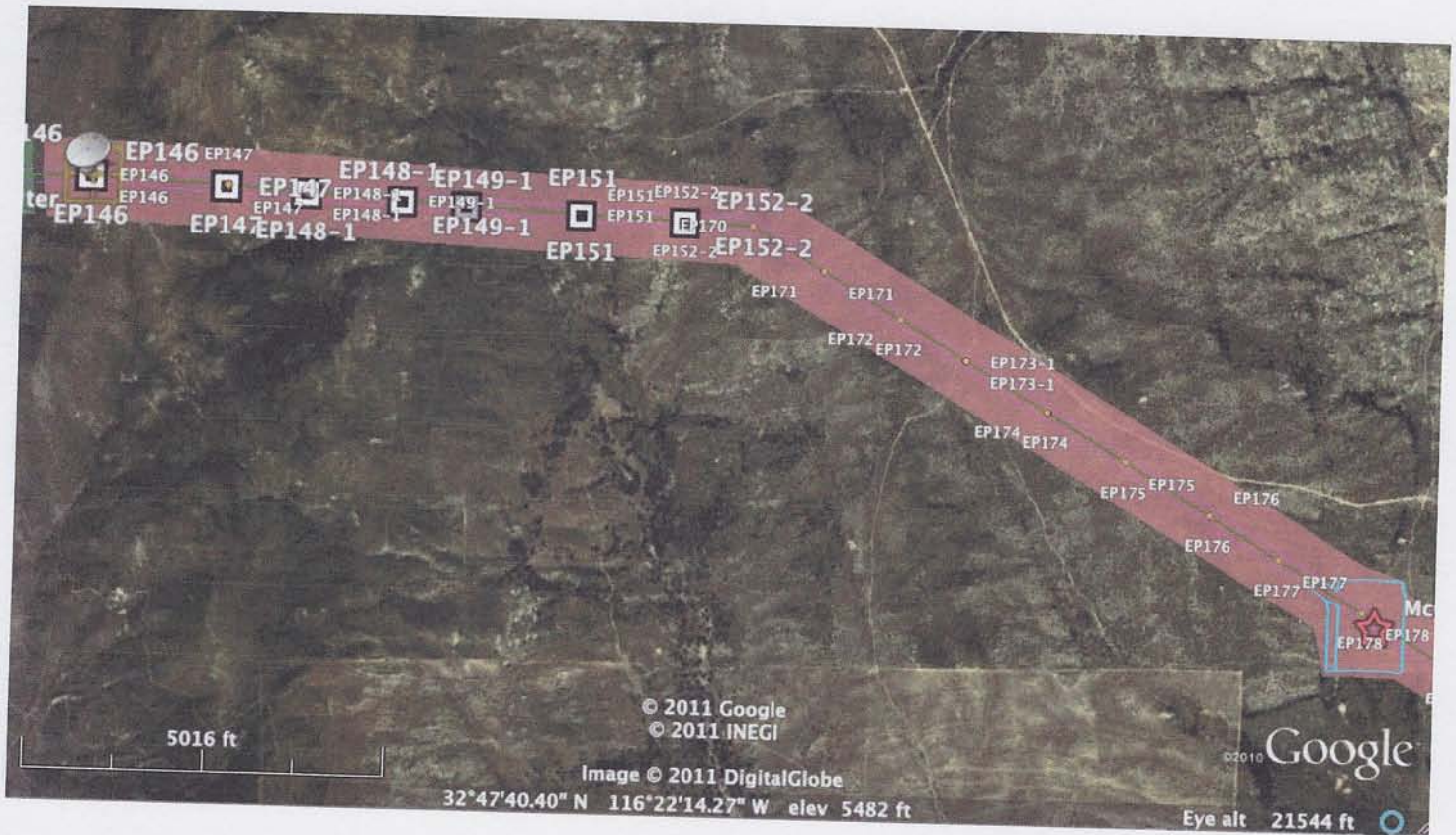
CAP

NON CAP

PAGE 8 OF 9

DATE: February 16, 2011

### ATTACHMENTS:



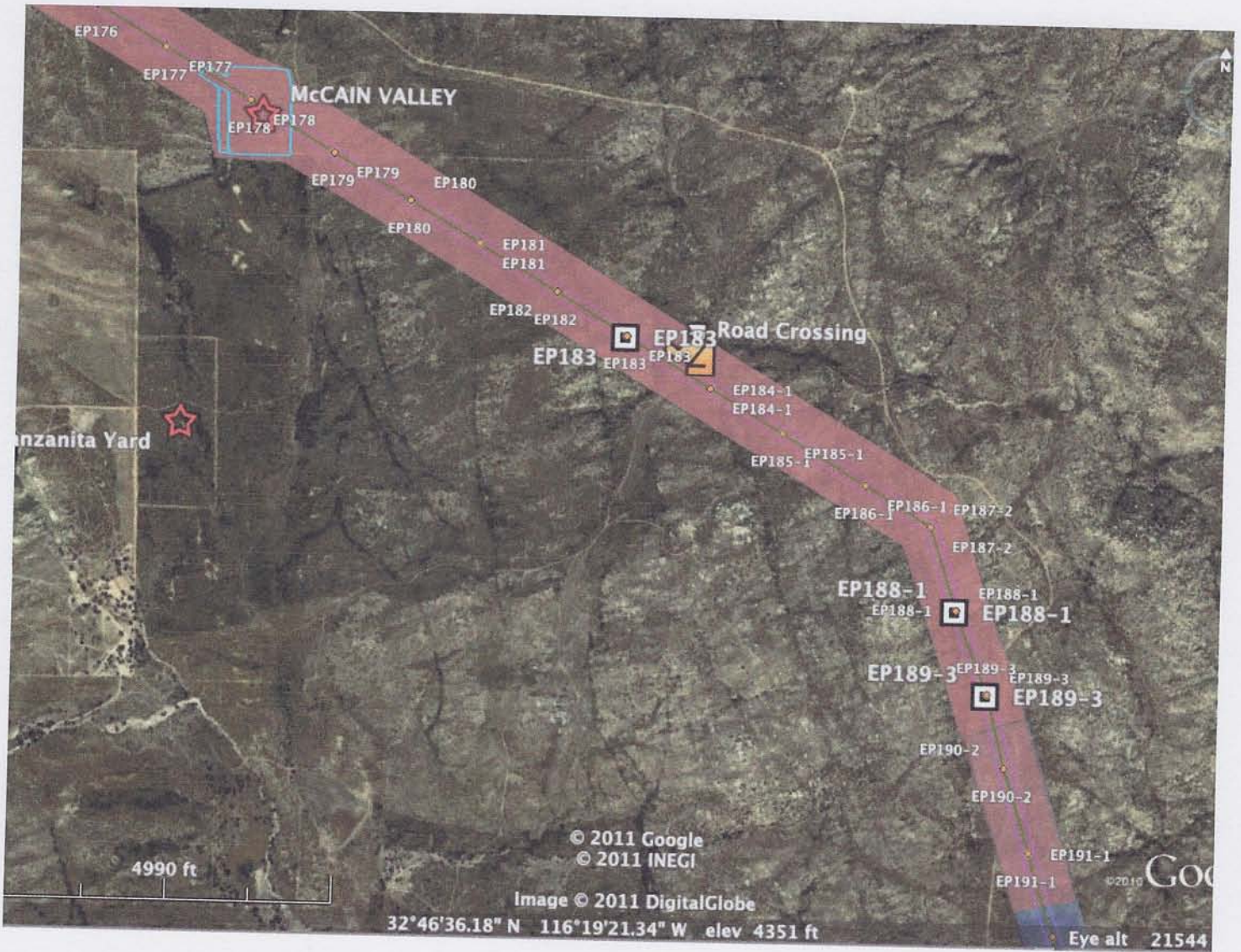
McCain Valley northwest bound.



CAP

NON CAP

ATTACHMENTS:



McCain Valley southeast bound