



HELICOPTER EXTERNAL LOAD OPERATION

CAP

NON CAP

PAGE 1 OF 7

DATE: February 22, 2011

PROPOSED FLY DATE: **March 7, 2011 through September 7, 2011**

PROJECT NAME: Plaster City/Dunaway/IVSub <i># 201102228</i>	LOCATION: N 32 47' 29.62" W 115 52' 43.46"
LIFT DESCRIPTION, WEIGHTS, NUMBER OF LIFTS: Multiple Tower Structures and related construction equipment flown from Plaster City Fly yard to the west and south east. Also structures will be flown from Dunaway and IV Sub Fly yards. Hwy 8 will NOT be overflowed. Weights between 15-18000lbs. NON CAP due to remote location.	
OPERATORS SPECIFICS: Erickson Air Crane 3100 Willow Springs Road Central Point, Oregon 97502 Ph. #1-800-866-9431 Fax # 541-664-7613 Certificate #E8KL899H	CAP PREPARED BY: Brad Warren bwarren@ericksonaircrane.com #541-326-9448 Bill Neckels bneckels@ericksonaircrane.com #541-326-9448
	AIRCRAFT: SK 64 F N237AC S/N: 64095 Airworthiness: Transport
CUSTOMERS SPECIFICS: San Diego Gas & Electric 8315 Century Park Ct. CP 21G San Diego, California 92123 Contact: Mike Manry mmanry@semprautilities.com Ph. # 619-851-4387 Fax# 858-637-	FSDO SPECIFICS: FSDO 8525 Gibbs Drive Suite 120 San Diego, California 92123 Contact: Inspector James McNamara james.d.mcnamara@faa.gov Ph. #858-502-9882 Ext.285 Fax # 858-502-9885

EXAMINED & ACCEPTED
DATE *FEB. 24, 2011*
BY *[Signature]*
FAA FSDO WP-09
SAN DIEGO, CA



HELICOPTER EXTERNAL LOAD OPERATION

CAP

NON CAP

PAGE 2 OF 7

DATE: February 22, 2011

PILOT DATA:

Certificates and Medicals on file for: Brad Warren, Bill Neckels, Max Evans, Mike Connor, Vern Sanders, Dale Weir, Vic Johnson, Travis Harrold, Fran Tebbe, Mike Life, Jamie Fallon.

LAW ENFORCEMENT AGENCIES CONTACTED:

Courtesy call to San Diego County Sheriff
Alpine Station
1347 Tavern Road
Alpine, CA 91901
Dispatch 858-565-5200
Accomplished daily by Sunrise Base.

HIGHWAY/ROAD DEPT. AGENCIES CONTACTED:

San Diego Public Works Permit for road crossings. PAR/SDGE responsibility.



HELICOPTER EXTERNAL LOAD OPERATION

CAP

NON CAP

PAGE 3 OF 7

DATE: February 22, 2011

PROCEDURES FOR CEASING OPERATIONS:

If a potential for a hazard should occur, the person(s) observing the hazard will notify the Erickson Air Crane (EAC) crew, the SDGE crew or the aircraft directly. Hazards could include, but are not limited to breach of the sterile area by any unauthorized persons and any other events that could cause danger to persons or property. The radioman will contact the pilot by radio and the operation will be suspended until the work environment is secured and safe.

STERILE AREA & FLIGHT CORRIDORS

All non-essential persons will not be allowed inside the Sterile area. All personnel involved with the lift will be briefed on procedures and safety information prior to the commencement of the lift operations. In the case of operations in the flight corridors, flight crew will self clear the flight path enroute. The Flight Corridors allow for sufficient operational area to see and avoid intrusions in this space. In the event of an intrusion of the border of this area, Corridor allows a minimum of 300 feet clearance in order to avoid the intrusion. If unable, operations cease until rectified.

FLIGHT NOTIFICATION TO FSDO:

Notification to the FSDO will be made to advise of specific flight operation dates within a range of dates specified in this plan. This can be an email or phone to call to advise that we will operate on a particular date. It is not necessary to receive a confirmation call back from the FSDO before operating. It is advisory in nature for the FSDO.

REQUIRED SAFETY EQUIPMENT:

Hard hats, chin straps, eye protection, gloves, high visibility clothing.

CAP NON CAP

PAGE 4 OF 7

DATE: February 22, 2011

ATTACHMENTS:**PLASTER CITY PRE OPERATIONS ACTION ITEMS:**

- 1) Confirm traffic controls for crossing Painted Gorge Rd. near structure EP 316-2.
- 2) Lots of ATV/recreation traffic in this general area. Suggest possibility of having Sunrise Project ATV's available for interception/communications with recreators.
- 3) Confirm traffic controls for crossing County Highway S80 immediately south of Plaster Yard.
- 4) Tower EP 342 is 160' from eastbound lane of Hwy 8. Crane will be approaching this site from the south and will be below ETL at site. However, dust may be a visibility issue for Hwy 8. Consider water availability/dust abatement. EP 342 is a EXLD tower type of 153' total constructed height. 153'+20' rigging= 173', this represents minimum non-aerodynamic load, forward distance below ETL. Summary: 173' exceeds the 160' distance to highway, therefore, too close without traffic control for Highway 8. Traffic control required for eastbound lane of Highway 8. (As of 2/21/11 we will not fly EP 341 & 342 according to PAR) This information for future reference should this plan change.
- 5) MTS Permit. In accordance with permit, a 5 day pre ops notice is required to Judy Banister judy.banister@sdmts.com, 619-557-4501. Also required is a notice when work is complete. Check with G Aiken and/or Randy Lyle.

HELICOPTER EXTERNAL LOAD OPERATION

 CAP

 NON CAP

PAGE 5 OF 7

DATE: February 22, 2011

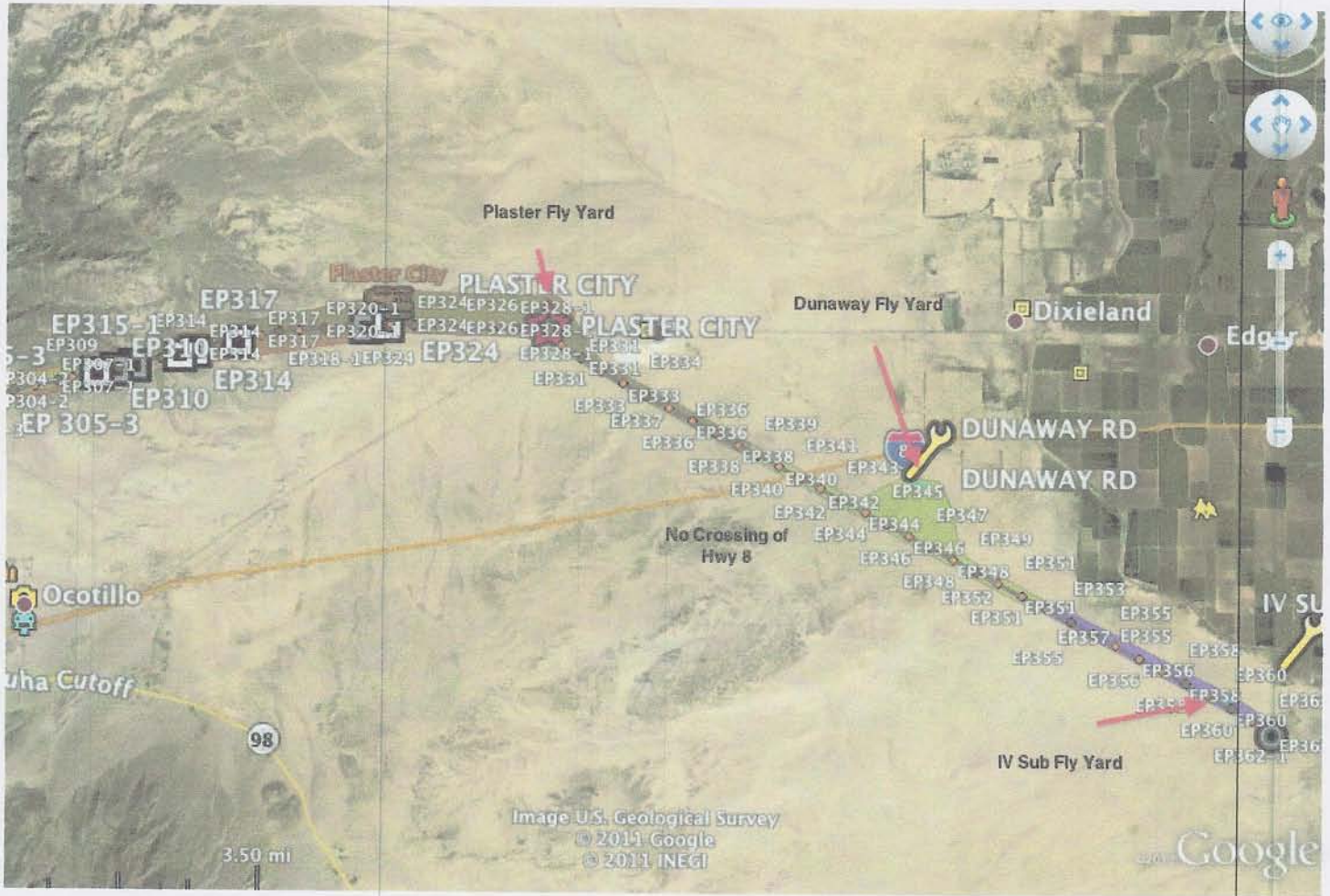
ATTACHMENTS:

JOB DESCRIPTION	LOAD WT	LOAD & RTR WASH	ELEVATION	FLY DISTANCE
Plaster City	17,900	19,900	500	4.5nm
	PA & TEMP	DA	HP AVAIL	TQ AVAIL
	500' & 40C	3500'	8240hp	85.0%
PERFORMANCE CALC		LIMIT CALC		
46400		46400		
FLIGHT PHASE	TIME		FUEL CALC	At 550 Gal/hr.
	In Minutes			
START & LIFTOFF	10		FUEL REQ.	2211
OUTBOUND LEG	5		Min. Fuel	1000
SET	15		TOTAL LBS. FUEL	3211
INBOUND LEG	4		TOTAL GAL. FUEL	330
LANDING	2		FUEL/SIDE	1606
TOTAL TIME	36			
WEIGHT AND BALANCE				
	WEIGHT	ARM	MOMENT	
A/C Config. WT	22644	333.9	7561284	
FWD PILOTS (2)	400	94.0	37600	
AFT PILOT	200	130.0	26000	
JUMPSEAT		108.5	0	
FUEL FWD	1606	280.8	450824	
FUEL AFT	1606	397.3	637865	
FUEL AUX		461.3	0	
TOTALS	26455	329.4	8713574	
ADD LOAD	19,900	333.0	6626700	
Grand Total	46355	330.9	15340274	
TOTAL GROSS	46355	COMPARE TO LIMIT CALC		46400
	Mode I	30400	Mode II	
SUMMARY	GO			
SIGNATURE	Brad Warren			

CAP

NON CAP

ATTACHMENTS:



3 Fly Yards. Plaster, Dunaway and IV Sub. No towers flown across Highway 8.