



HELICOPTER EXTERNAL LOAD OPERATION

CAP NON CAP

PAGE 1 OF 8

DATE: February 11, 2011

FLY DATE: February 16, 2011 through May 16, 2011

PROJECT NAME: Rough Acres	LOCATION: From Rough Acres Fly Yard northbound to structure EP 191 & southbound to structure EP 209. See attached graphics.
LIFT DESCRIPTION, WEIGHTS, NUMBER OF LIFTS: CAP due to house in flight corridor. This house will have a minimum of 300' no fly zone around it. 14 steel lattice structures, with an average of 3 pics per structure, for a total of 42 pics. The heaviest lift is 17,000 lbs. Also associated construction equipment, drills, concrete, dozers etc.	
OPERATORS SPECIFICS: Erickson Air Crane 3100 Willow Springs Road Central Point, Oregon 97502 Ph. #1-800-866-9431 Fax # 541-664-7613 Certificate #E8KL899H	CAP PREPARED BY: Brad Warren bwarren@ericksonaircrane.com #541-326-9448 Bill Neckels bneckels@ericksonaircrane.com #541-326-9448
	AIRCRAFT: SK 64 F N237AC S/N: 64095 Airworthiness: Transport
CUSTOMERS SPECIFICS: San Diego Gas & Electric 8315 Century Park Ct. CP 21G San Diego, California 92123 Contact: Mike Manry mmanry@semprautilities.com Ph. # 619-851-4387 Fax# 858-637-	FSDO SPECIFICS: FSDO 8525 Gibbs Drive Suite 120 San Diego, California 92123 Contact: Inspector James McNamara james.d.mcnamara@faa.gov Ph. #858-502-9882 Ext.285 Fax # 858-502-9885

EXAMINED & APPROVED
DATE FEB 11, 2011
BY
FAA WPFSDO-09
SAN DIEGO, CA



HELICOPTER EXTERNAL LOAD OPERATION

CAP

NON CAP

PAGE 2 OF 8

DATE: February 11, 2011

PILOT DATA:

Certificates and Medicals on file for: Brad Warren, Bill Neckels, Max Evans, Mike Connor, Vern Sanders, Dale Weir, Vic Johnson, Travis Harrold, Fran Tebbe, Mike Life, Jamie Fallon.

LAW ENFORCEMENT AGENCIES CONTACTED:

San Diego County Sherriff. Alpine Station, 1347 Tavern Road , Alpine, CA 91901 #619-659-2600.

HIGHWAY/ROAD DEPT. AGENCIES CONTACTED:

San Diego County Public Works. Traffic control permits required for roads in the area of Rough Acres Fly Yard Sterile Area as well as the Flight Corridors.

EXAMINED & APPROVED

DATE FEB. 11, 2011

BY [Signature]

FAA WPFSDO-09

SAN DIEGO, CA



HELICOPTER EXTERNAL LOAD OPERATION

CAP

NON CAP

PAGE 3 OF 8

DATE: February 11, 2011

PROCEDURES FOR CEASING OPERATIONS:

If a potential for a hazard should occur, the person(s) observing the hazard will notify the Erickson Air Crane (EAC) crew, the SDGE crew or the aircraft directly. Hazards could include, but are not limited to breach of the sterile area by any unauthorized persons and any other events that could cause danger to persons or property. The radioman will contact the pilot by radio and the operation will be suspended until the work environment is secured and safe.

STERILE AREA & FLIGHT CORRIDORS

All non-essential persons will not be allowed inside the Sterile area. All personnel involved with the lift will be briefed on procedures and safety information prior to the commencement of the lift operations. In the case of operations in the flight corridors, flight crew will self clear the flight path enroute. The Flight Corridors allow for sufficient operational area to see and avoid intrusions in this space. In the event of an intrusion of the border of this area, Corridor allows a minimum of 300 feet clearance in order to avoid the intrusion. If unable, operations cease until situation rectified.

FLIGHT NOTIFICATION TO FSDO:

Notification to the FSDO will be made to advise of specific flight operation dates within a range of dates specified in this plan. This can be an email or phone to call to advise that we will operate on a particular date. It is not necessary to receive a confirmation call back from the FSDO before operating. It is advisory in nature for the FSDO.

REQUIRED SAFETY EQUIPMENT:

Hard hats, chin straps, eye protection, gloves, high visibility clothing.

EXAMINED & APPROVED

DATE FEB. 11, 2011

BY [Signature]

FAA WPFSDO-09

SAN DIEGO, CA



HELICOPTER EXTERNAL LOAD OPERATION

CAP

NON CAP

PAGE 4 OF 8

DATE: February 11, 2011

WEIGHT AND BALANCE:

N237AC		SN: 64095		TYPE: SK64F	
JOB DESCRIPTION	LOAD WT	LOAD & RTR WASH	ELEVATION	FLY DISTANCE	
ROUGH ACRES	14,000#	16,000#	3500'	4nm	
	PA & TEMP	DA	HP AVAIL	TQ AVAIL	
	3500' & 35C	6500'	7300	80.0	
PERFORMANCE CALC			LIMIT CALC		
42,000			43,800		
FLIGHT PHASE	TIME		FUEL CALC	At 550 Gal/hr.	
	In Minutes				
START & LIFTOFF	10		FUEL REQ.	2108	
OUTBOUND LEG	4		Min. Fuel	1000	
SET	15		TOTAL LBS. FUEL	3108	
INBOUND LEG	3		TOTAL GAL. FUEL	315	
LANDING	2		FUEL/SIDE	1554	
TOTAL TIME	34				
WEIGHT AND BALANCE					
	WEIGHT	ARM	MOMENT		
A/C Config. WT	22592	339.5	7669984		
FWD PILOT	400	94.0	37600		
AFT PILOT	200	130.0	26000		
JUMPSEAT		108.5	0		
FUEL FWD	1554	280.8	436363		
FUEL AFT	1554	397.3	617404		
FUEL AUX		461.3	0		
TOTALS	26300	334.1	8787351		
ADD LOAD	16,000	336.0	5376000		
Grand Total	42300	334.8	14163351		
TOTAL GROSS	42300	COMPARE TO LIMIT CALC		43,800	
	Mode I	28,200	Mode II	33,600	
SUMMARY	GO				
SIGNATURE	Brad Warren				

Average Load Calc. Recalculated on a per flight basis as necessary.

EXAMINED & APPROVED
 DATE FEB. 11, 2011
 BY [Signature]
 FAA WPFSDO-09
 SAN DIEGO, CA

CAP

NON CAP

DATE: February 11, 2011

ATTACHMENTS:



Rough Acres Overview. The farthest south structure for Crane lifts will be EP 209, Highway 8 is not effected. Traffic controls will be in effect northbound where right of way parallels a road.

EXAMINED & APPROVED

DATE FEB. 11, 2011

[Signature]

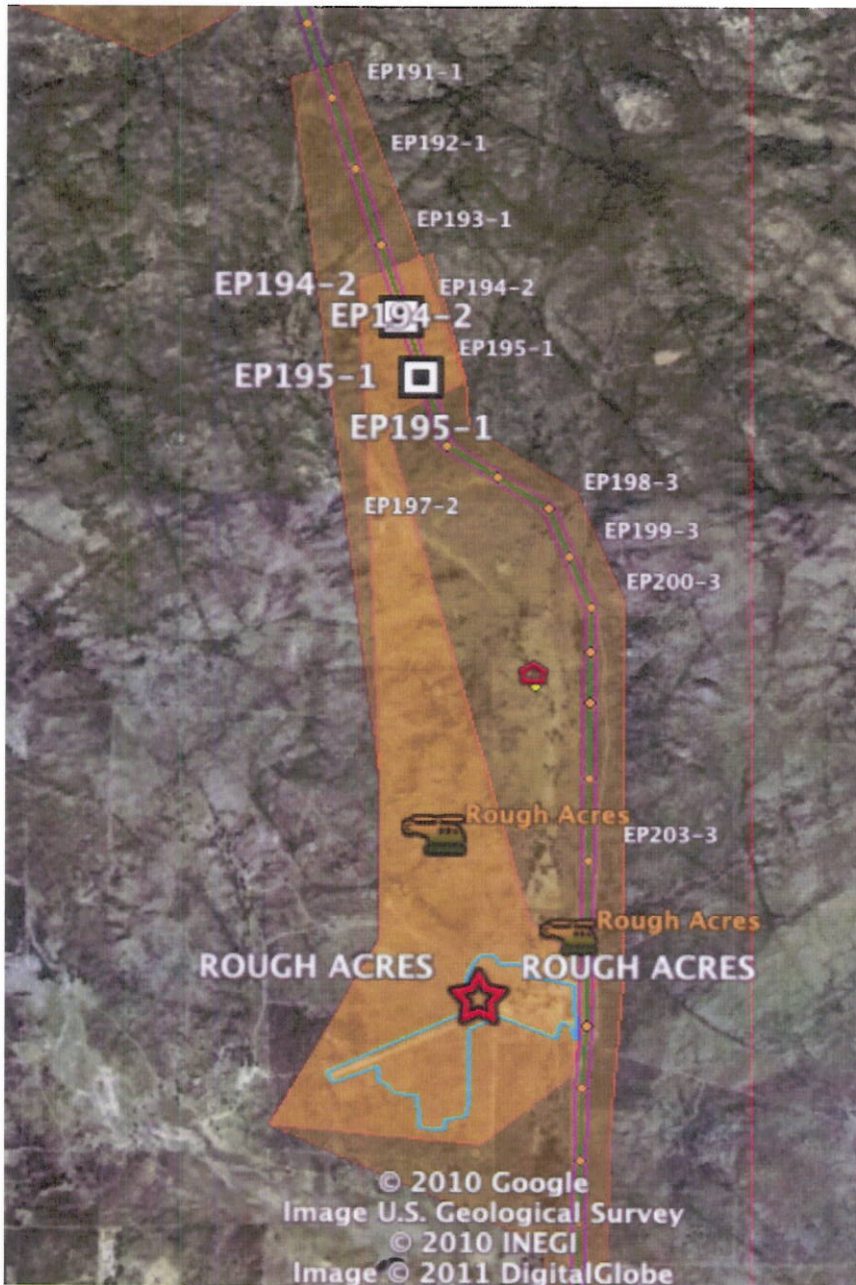
FAA WPFSDO-09

SAN DIEGO, CA

CAP

NON CAP

ATTACHMENTS:



Rough Acres Northbound. Traffic controls as necessary. Furthest fly distance northbound is 1.97nm to structure 194. The house north of the yard will have a minimum 300' radius no fly zone around that property.

EXAMINED & APPROVED

DATE FEB. 11, 2011

BY [Signature]

FAA WPFSDO-09

SAN DIEGO, CA

CAP

NON CAP

DATE: February 11, 2011

ATTACHMENTS:



Rough Acres South Bound. Traffic controls as necessary. Furthest fly distance southbound is .9nm to structure 209. If structures near Highway 8 are to be flown, road controls will be in effect due to proximity to Highway 8.

EXAMINED & APPROVED
DATE FEB. 11, 2011
BY [Signature]
FAA WPFSDO-09
SAN DIEGO, CA

CAP

NON CAP

ATTACHMENTS:



Rough Acres Fly Yard Sterile Area. This area is fenced.

EXAMINED & APPROVED
DATE *FEB. 11, 2011*
BY *[Signature]*
FAA WPFSDO-09
SAN DIEGO, CA