



### HELICOPTER EXTERNAL LOAD OPERATION

CAP

NON CAP

PAGE 1 OF 9

DATE: February 16, 2011

FLY DATE: February 28, 2011 through June 28, 2011

<b>PROJECT NAME:</b> SWAT Fly Yard # 201102183	<b>LOCATION:</b> N 32 43' 10.82" W 116 41' 50.30"
<b>LIFT DESCRIPTION, WEIGHTS, NUMBER OF LIFTS:</b> Multiple Tower Structures and related construction equipment flown from SWAT Fly yard in two directions- north and south bound. CAP due to chicken ranch in vicinity and road crossings at Lyons Valley Road and Barrett Lake Road.	
<b>OPERATORS SPECIFICS:</b> Erickson Air Crane 3100 Willow Springs Road Central Point, Oregon 97502 Ph. #1-800-866-9431 Fax # 541-664-7613 Certificate #E8KL899H	<b>CAP PREPARED BY:</b> Brad Warren <a href="mailto:bwarren@ericksonaircrane.com">bwarren@ericksonaircrane.com</a> #541-326-9448 Bill Neckels <a href="mailto:bneckels@ericksonaircrane.com">bneckels@ericksonaircrane.com</a> #541-326-9448
	<b>AIRCRAFT:</b> SK 64 F N237AC S/N: 64095 Airworthiness: Transport
<b>CUSTOMERS SPECIFICS:</b> San Diego Gas & Electric 8315 Century Park Ct. CP 21G San Diego, California 92123  Contact: Mike Manry <a href="mailto:mmanry@semprautilities.com">mmanry@semprautilities.com</a> Ph. # 619-851-4387 Fax# 858-637-	<b>FSDO SPECIFICS:</b>  FSDO 8525 Gibbs Drive Suite 120 San Diego, California 92123 Contact: Inspector James McNamara <a href="mailto:james.d.mcnamara@faa.gov">james.d.mcnamara@faa.gov</a> Ph. #858-502-9882 Ext.285 Fax # 858-502-9885

EXAMINED & APPROVED  
DATE FEB 16, 2011  
BY   
FAA WPFSDO-09  
SAN DIEGO, CA



**HELICOPTER EXTERNAL LOAD OPERATION**

CAP

NON CAP

PAGE 2 OF 9

DATE: February 16, 2011

**PILOT DATA:**

Certificates and Medicals on file for: Brad Warren, Bill Neckels, Max Evans, Mike Connor, Vern Sanders, Dale Weir, Vic Johnson, Travis Harrold, Fran Tebbe, Mike Life, Jamie Fallon.

**LAW ENFORCEMENT AGENCIES CONTACTED:**

Daily notification to Sheriff via Sunrise Base.

**HIGHWAY/ROAD DEPT. AGENCIES CONTACTED:**

San Diego Public Works Permit for road crossings. PAR responsibility.





## HELICOPTER EXTERNAL LOAD OPERATION

CAP

NON CAP

PAGE 3 OF 9

DATE: February 16, 2011

### PROCEDURES FOR CEASING OPERATIONS:

If a potential for a hazard should occur, the person(s) observing the hazard will notify the Erickson Air Crane (EAC) crew, the SDGE crew or the aircraft directly. Hazards could include, but are not limited to breach of the sterile area by any unauthorized persons and any other events that could cause danger to persons or property. The radioman will contact the pilot by radio and the operation will be suspended until the work environment is secured and safe.

### STERILE AREA & FLIGHT CORRIDORS

All non-essential persons will not be allowed inside the Sterile area. All personnel involved with the lift will be briefed on procedures and safety information prior to the commencement of the lift operations. In the case of operations in the flight corridors, flight crew will self clear the flight path enroute. The Flight Corridors allow for sufficient operational area to see and avoid intrusions in this space. In the event of an intrusion of the border of this area, Corridor allows a minimum of 300 feet clearance in order to avoid the intrusion. If unable, operations cease until rectified.

### FLIGHT NOTIFICATION TO FSDO:

Notification to the FSDO will be made to advise of specific flight operation dates within a range of dates specified in this plan. This can be an email or phone to call to advise that we will operate on a particular date. It is not necessary to receive a confirmation call back from the FSDO before operating. It is advisory in nature for the FSDO.

### REQUIRED SAFETY EQUIPMENT:

Hard hats, chin straps, eye protection, gloves, high visibility clothing.



CAP

NON CAP

DATE: February 16, 2011

ATTACHMENTS:

ACTION ITEMS PRIOR TO FLIGHTS

- 1) Notifications and noise considerations to chicken ranch at north end of Flight Corridor. Distance is sufficient but noise could be an issue for this ranch.
- 2) Be especially mindful of Flight Corridors in the EP 16 area. Houses to the east.
- 3) Crossing of Lyons Valley Rd. Traffic controls to be in effect.
- 4) Crossing of Barrett Lake Rd. in south Corridor. Traffic controls.
- 5) Recon flight required prior to Crane ops.

↓  
Review ~~attach~~ Traffic control permit!





## HELICOPTER EXTERNAL LOAD OPERATION

CAP  NON CAP

PAGE 5 OF 9

DATE: February 16, 2011

ATTACHMENTS:

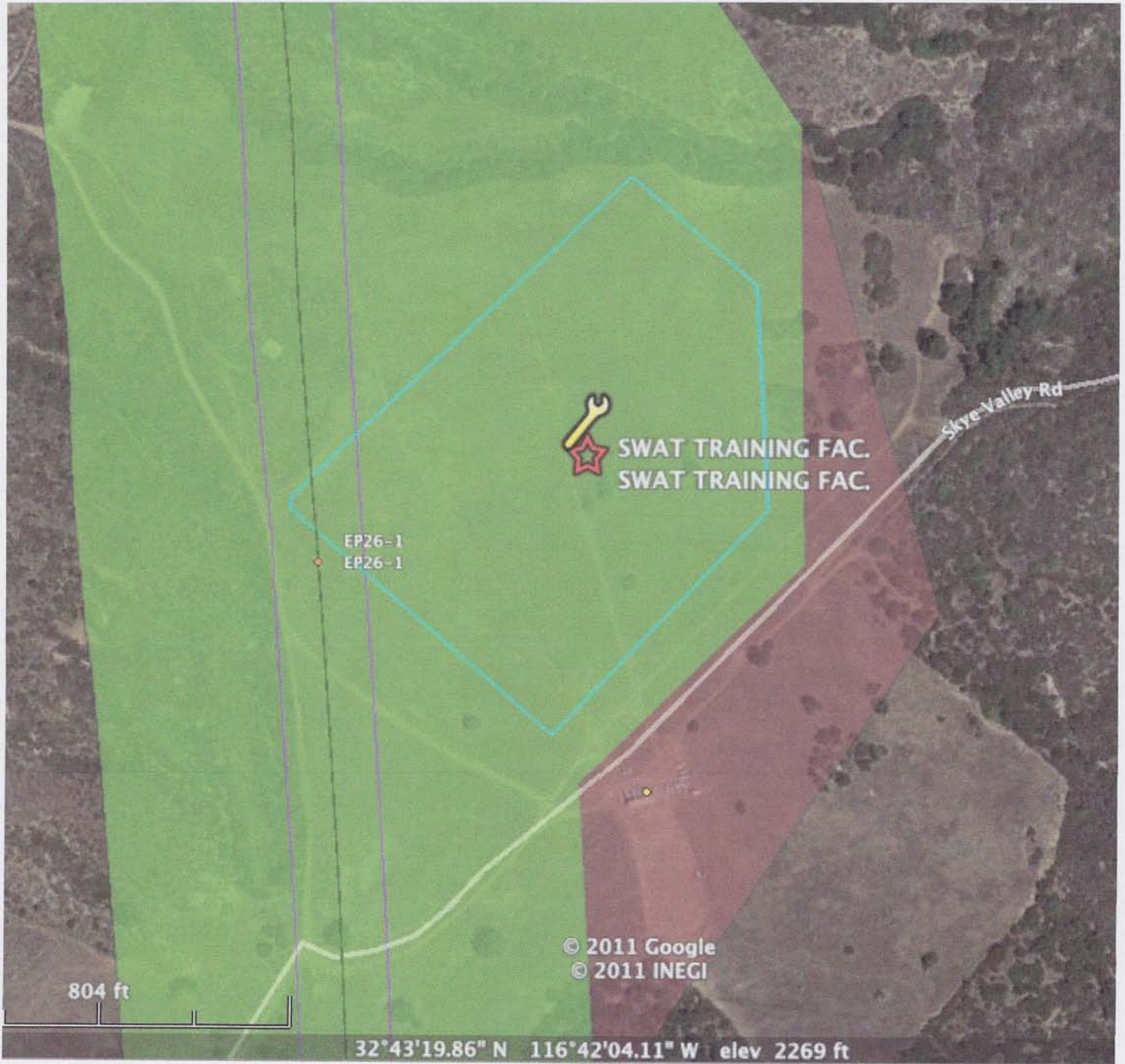
JOB DESCRIPTION	LOAD WT	LOAD & RTR WASH	ELEVATION	FLY DISTANCE
SWAT Yard		16,200	3500'	3.8nm
	PA & TEMP	DA	HP AVAIL	TQ AVAIL
	3500' & 38C	6900'	7520hp	78.0%
PERFORMANCE CALC		LIMIT CALC		
42800		42800		
FLIGHT PHASE	TIME			FUEL CALC
	In Minutes			At 550 Gal/hr.
START & LIFTOFF	8			FUEL REQ. 1965
OUTBOUND LEG	4			Min. Fuel 1000
SET	15			TOTAL LBS. FUEL 2965
INBOUND LEG	3			TOTAL GAL. FUEL 293
LANDING	2			FUEL/SIDE 1483
TOTAL TIME	32			
WEIGHT AND BALANCE				
	WEIGHT	ARM	MOMENT	
A/C Config. WT	22976	333.9	7672146	
FWD PILOTS (2)	400	94.0	37600	
AFT PILOT	200	130.0	26000	
JUMPSEAT		108.5	0	
FUEL FWD	1483	280.8	416333	
FUEL AFT	1483	397.3	589063	
FUEL AUX		461.3	0	
TOTALS	26541	329.3	8741142	
ADD LOAD	16,200	333.0	5394600	
Grand Total	42741	330.7	14135742	
TOTAL GROSS	42741	COMPARE TO LIMIT CALC		42800
	Mode I	27800	Mode II	32800
SUMMARY	GO			



CAP

NON CAP

ATTACHMENTS:



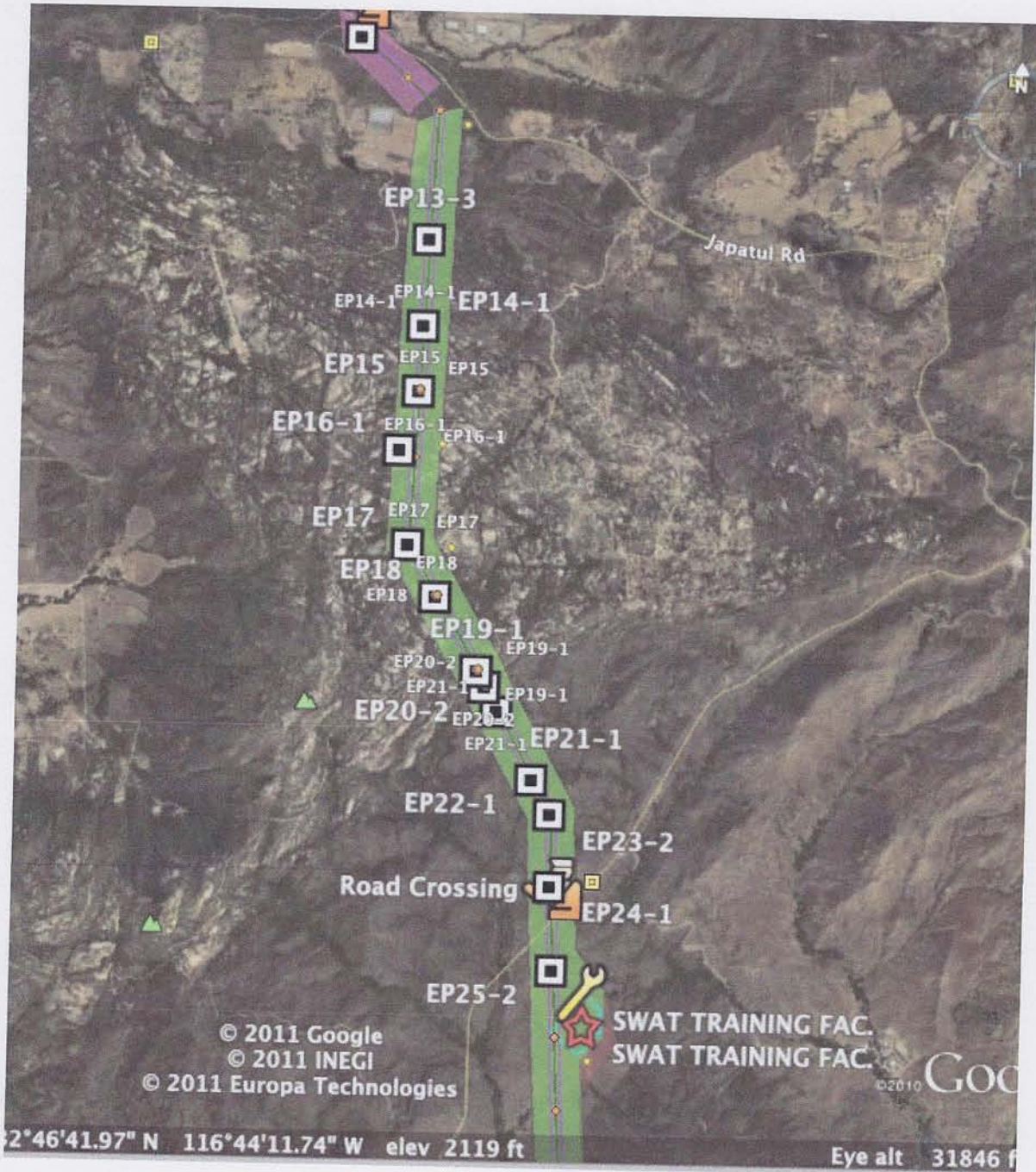


CAP

NON CAP

DATE: February 16, 2011

ATTACHMENTS:



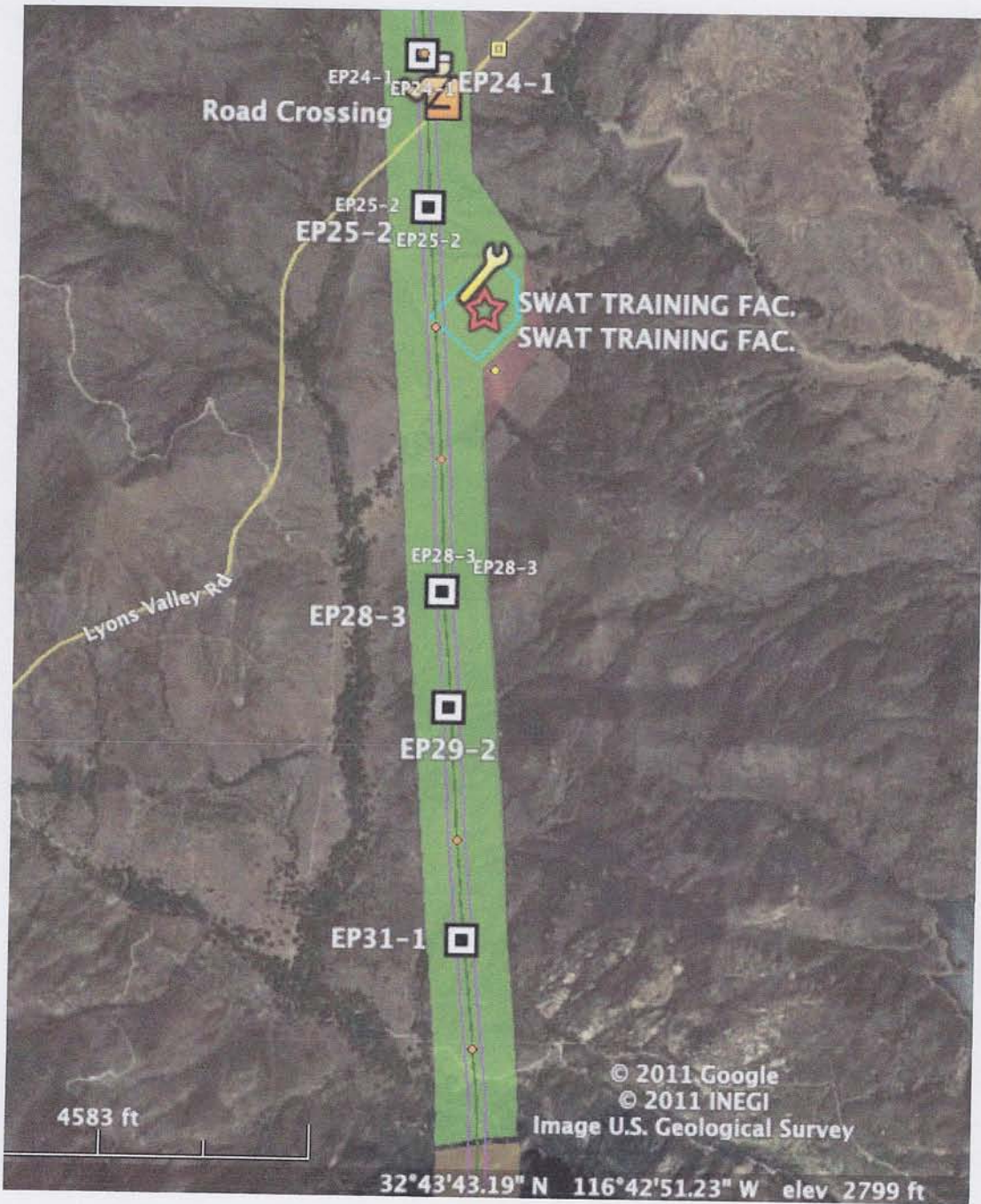


CAP

NON CAP

DATE: February 16, 2011

ATTACHMENTS:

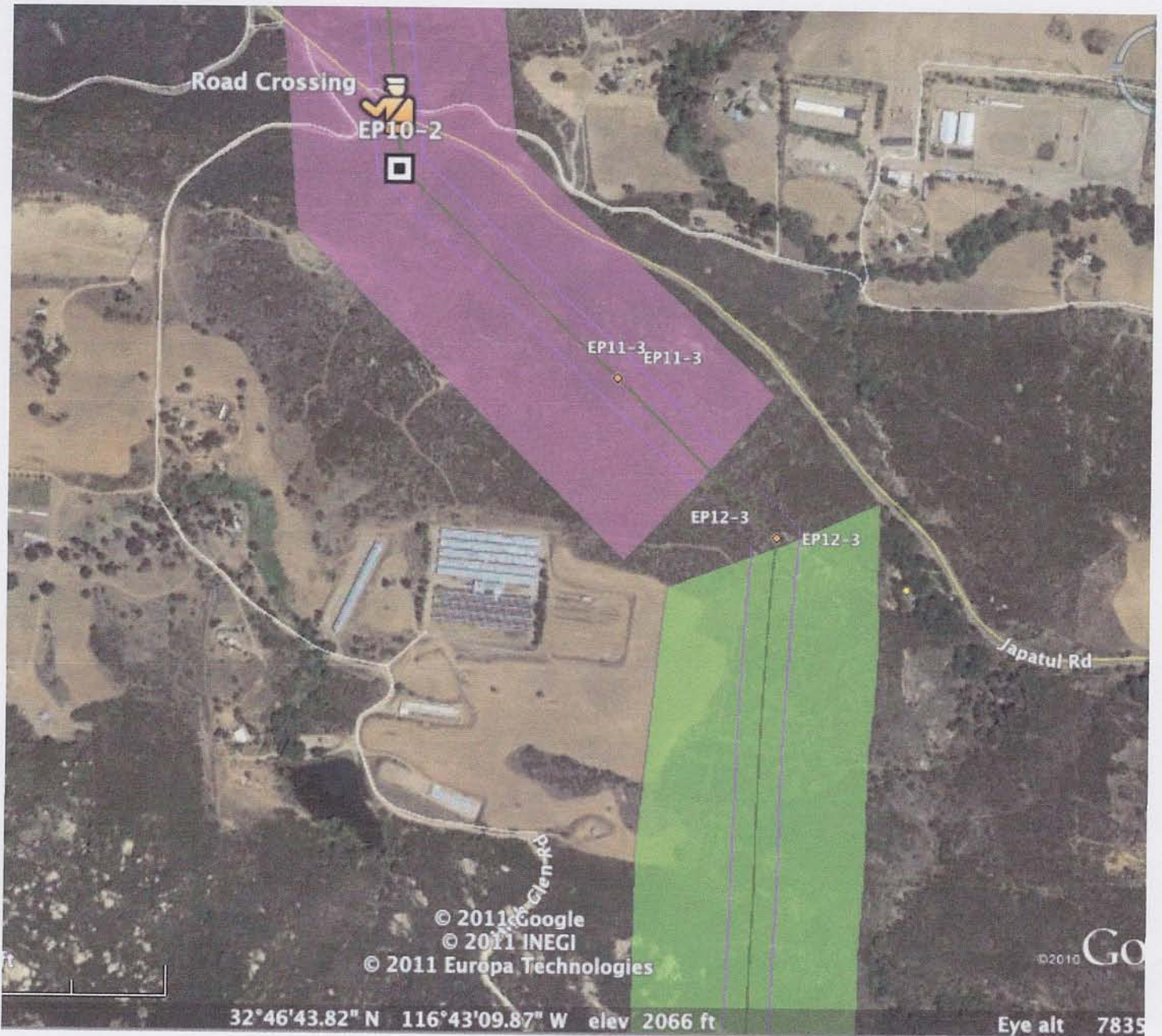




CAP

NON CAP

ATTACHMENTS:



Chicken Ranch Detail. Distance is outside of Corridors, but noise considerations to made with this landowner.