

# California Department of Forestry and Fire Protection

## San Diego Unit



## Pre Fire Management Plan

2005

Charles R. Maner  
Unit Chief

# TABLE OF CONTENTS

|  |    |
|--|----|
| <b>SECTION A</b> .....   | 1  |
| <b>MEMORANDUM</b> .....  | 1  |
| <b>SECTION B</b> .....   | 3  |
| <b>COMMUNITY WILDFIRE PROTECTION PLAN</b> .....                      | 4  |
| <b>CERTIFICATION AND AGREEMENT</b> .....                             | 4  |
| <b>SECTION C</b> .....   | 5  |
| <b>EXECUTIVE SUMMARY</b> .....                                       | 6  |
| <b>SECTION D</b> .....   | 8  |
| <b>COLLABORATION</b> .....   | 9  |
| <b>SECTION E</b> .....   | 10 |
| <b>ASSETS AT RISK</b> .....  | 11 |
| <b>WATER</b> .....   | 11 |
| <b>STRUCTURES</b> .....  | 11 |
| <b>RECREATION AND SCENIC</b> .....                                   | 11 |
| <b>AIR QUALITY</b> .....   | 11 |
| <b>WILDLIFE</b> .....  | 11 |
| <b>INFRASTRUCTURE</b> .....  | 11 |
| <b>SECTION F</b> .....   | 13 |
| <b>THE FIRE SITUATION</b> .....                                      | 14 |
| <b>GENERAL DESCRIPTION</b> .....                                     | 14 |
| <b>GENERAL DESCRIPTION OF THE DESIRED FUTURE CONDITION</b> .....     | 14 |
| <b>IGNITION WORKLOAD ASSESSMENT</b> .....                            | 14 |
| <b>FUELS</b> .....   | 14 |
| <b>WEATHER</b> .....   | 14 |
| <b>FIRE HISTORY</b> .....  | 14 |
| <b>FRAP ANALYSIS</b> .....   | 14 |
| <b>CONCLUSION</b> .....  | 15 |
| <b>VEGETATIVE WILDFIRE FUELS</b> .....                               | 15 |
| <b>STRUCTURE FUELS</b> .....   | 15 |
| <b>FREQUENCY OF SEVERE FIRE WEATHER</b> .....                        | 15 |
| <b>SECTION G</b> .....   | 16 |
| <b>PAST PROJECTS</b> .....   | 17 |
| <b>PRESENT PROJECTS</b> .....  | 17 |
| <b>FUTURE PROJECTS</b> .....   | 17 |
| <b>FOREST HEALTH ENHANCEMENT PROGRAM (FHEP)</b> .....                | 17 |
| <b>UNIT FUEL REDUCTION EFFORTS (NON PROJECT TYPE)</b> .....          | 21 |
| <b>FOREST AREA SAFETY TASK FORCE (FAST)</b> .....                    | 22 |
| <b>PEST DETECTION – DEVELOPING ESTIMATES OF TREE MORTALITY</b> ..... | 22 |
| <b>GIS COORDINATION/ANALYTIC PRODUCTS – SUPPORTING THE</b>           |    |
| <b>DEVELOPMENT OF A STRATEGIC GIS FRAMEWORK</b> .....                | 22 |
| <b>FUNDING / GRANT UPDATE:</b> .....                                 | 22 |
| <b>VEGETATION MANAGEMENT</b> .....                                   | 22 |
| <b>COMMUNITY PROTECTION PLANNING</b> .....                           | 22 |

|                                   |    |
|-----------------------------------|----|
| <b>EDUCATION</b> .....            | 23 |
| <b>GREAT ESCAPES</b> .....        | 23 |
| <b>FOREST HEALTH</b> .....        | 23 |
| <b>SPATIAL DATA</b> .....         | 24 |
| <b>GRANT ACCOUNTING</b> .....     | 24 |
| <b>FHEP ASSESSMENT</b> .....      | 25 |
| <b>PROBLEMS</b> .....             | 25 |
| <b>SUCCESSES</b> .....            | 25 |
| <b>CHANGES NEEDED</b> .....       | 25 |
| <b>FOR THE FUTURE</b> .....       | 25 |
| <b>SECTION H</b> .....            | 27 |
| <b>INSTITUTIONAL ISSUES</b> ..... | 28 |
| <b>SECTION I</b> .....            | 29 |
| <b>STRATEGIES</b> .....           | 30 |
| <b>STAKEHOLDERS</b> .....         | 31 |

## **MAPS**

|   |    |
|---|----|
| Figure 1 CDF San Diego Fuel Models .....                | 42 |
| Figure 2 CDF San Diego Fire Hazard Severity Zones ..... | 43 |
| Figure 3 CDF San Diego DPA .....                        | 44 |
| Figure 4 CDF San Diego SRA .....                        | 45 |
| Figure 5 CDF San Diego Fire History 2000 - 2004 .....   | 46 |

# SECTION A

## MEMORANDUM

To: Candace Gregory, Region Chief, Acting

Date: July 1, 2005

Telephone: (619) 590-3100

From: Charles R. Maner, Unit Chief  
Department of Forestry and Fire Protection  
San Diego Unit

Subject: Status of CDF/San Diego Unit Fire Management Plan

CDF San Diego has completed the Fire Management Plan for July, 2005. This plan is built upon the following:

- The Unit has determined that all communities within San Diego County are potentially at risk of wildland fires and will be a major focus of this and future F.M.P.
- Ignition Workload Analysis consisting of Weather, Assets at Risk, Fuels and Level of Service have been incorporated into this plan.
- Existing VMP and other fuels management projects will be updated. At this time several new projects are in the early stages of planning within the Unit. Current status will be given for these projects.
- Continuation of strategies that will enhance implementation of the F.M.P. within the Unit are addressed.

As always the Fire Plan process will continue to be evolutionary in nature. As new technologies and procedures become available, they will be incorporated into the process.

To accomplish these objectives, we will do the following:

- Maintain an ongoing analysis of the Unit's ignition occurrences, causes and locations. This effort will establish current knowledge of the Unit's ignition management successes, as well as failures. It also allows for the timely redirection of resources to address changing ignition trends.
- Continue to meet our mass media goals and other education programs that focus on resident's fire behavior mannerisms and other users of state protected wildlands.
- Reduce, modify, or eliminate fire risks and hazards that contribute to unwanted fires and the damage they cause.
- Continue an aggressive campaign of applying prescribed fire to those areas identified within the Unit possessing excessive fuel loads and areas having a direct impact on communities at risk of fire.
- Aggressively inspect properties and insure compliance of the public resources code through the LE-38 program. Also aggressively enforce fire laws, ordinances and regulations and recover fire suppression costs and damages resulting from violation of the law and negligence.
- Restrict or suspend burning permits and other open fires when the risk of large damaging fires are apparent and implement red flag operations as critical fire weather warrants it.

These combined efforts will assist in the mitigation of potential ignition sources and meet the Unit's overall fire prevention objectives.

CHARLES R. MANER  
Unit Chief

By: JIM GONZALEZ  
Fire Captain  
Pre-Fire Engineer

**SECTION B**

**SAN DIEGO UNIT**

**COMMUNITY WILDFIRE PROTECTION  
PLAN CERTIFICATION AND  
AGREEMENT**

**COMMUNITY WILDFIRE PROTECTION PLAN  
CERTIFICATION AND AGREEMENT**

The Community Wildfire Protection Plan developed for \_\_\_\_\_.  
(name of community)

- This plan was collaboratively developed. Interested parties and federal land management agencies managing land in the vicinity of \_\_\_\_\_ have been consulted.  
(name of community)
- This plan identifies and prioritizes areas for hazardous fuel reduction treatments and recommends the types and methods of treatment that will protect \_\_\_\_\_  
(name of community)
- This plan recommends measures to reduce the ignitability of structures throughout the area addressed by the plan.
- The following entities attest that the standards listed above have been met and mutually agree with the contents of this Community Wildfire Protection Plan.

\_\_\_\_\_  
Unit Chief  
California Department of Forestry and Fire Protection

\_\_\_\_\_  
(insert a name and identify the applicable local government here)

\_\_\_\_\_  
(insert a name and identify the applicable local fire department here)

**SECTION C**

**SAN DIEGO UNIT**

**EXECUTIVE SUMMARY**



## EXECUTIVE SUMMARY

The San Diego Unit is comprised of San Diego and portions of Imperial County located in the extreme southwest corner of California. It is bordered by the Republic of Mexico to the south and the Pacific Ocean to the west. Riverside and Orange counties make up its border to the north and Imperial County to the east. San Diego County spans over 4,200 square miles and its population has grown to 2.9 million people which ranks second in the state. The unit is responsible for protecting 1,237,201 acres of state responsibility lands, 301,130 acres of cooperative direct protection responsibility lands and 4 local government full service fire protection agreements.

The San Diego Unit comprises of:

- 18 CDF Fire Stations, 26 CDF Fire Engines.
  - 7 Local Govt. Stations, 11 Fire Engines
  - 4 CDF / CDC Conservation Camps, 19 Handcrews
  - 1 CDF / USFS Air Attack Base - 1 CDF OV-10 Air Attack Aircraft
- 2 CDF S-2T Air Tankers  
1 USFS Type 2 Helicopter
- 4 CDF Bulldozers
  - 1 CDF / USFS Interagency Command Center, Monte Vista Headquarters

Total incidents for 2004: 10,528

SRA Fires: 1146, 89 Assist, 444 False Alarms, Acres Burned: 10,903, Dollar Loss \$2,806,850.

LRA Fires: 322, 32 Assist, 60 False Alarms, Acres Burned: 4, Dollar Loss \$508,300.

Currently San Diego along with Riverside and San Bernardino counties are under a state of emergency where hundreds of thousands of trees and vegetation are dead and dying after being weakened by drought and attacked by an infestation of bark beetles. In the unit, we have estimated approximately 215,000 acres, 115,000 SRA, 100,000 USFS to have been infested. The proclamation by Governor Schwarzenegger allows landowners and CDF to take steps to prevent a catastrophic fire by providing regulatory relief necessary to quickly remove dead and dying trees from their property. It also directs CDF to take immediate steps to protect public safety by clearing effective routes for evacuation and emergency response and by establishing fire safe evacuation centers. CDF San Diego has been charged with coordinating and cooperating with all agencies involved in this task and facilitate this effort. A group has been formed in the county named The San Diego Forest Area Safety Task Force which consists of state, local, federal, private groups and utility companies. The SDFAST shall be the clearinghouse for plans and information sharing as agencies mobilize and clear vegetation and trees to mitigate the hazard to the public.

During 2004, the Unit experienced a total of 614 unwanted fires compared to 602 the previous year. There was a significant decrease in acres burned in 2004, 10,903

compared to 265,080 acres in 2003.

A summary of fire starts in the Unit show significant reductions in arson 48% and vehicle fires 14% with increases in campfire 28% and debris burning 12%. The leading fire cause in the Unit was debris burning totaling 25%.

Our focus in 2005 and beyond will be to continue to address those ignitions that have the greatest risk in becoming large and damaging fires in the Unit. By working collectively with Pre-Fire Planners, Vegetation Management, and field personnel, we will determine areas of priority based on risk, values and ignition trends as well as fire history.

The overall goal of the Pre-Fire Management Plan is to reduce total government costs and citizen losses from wildland fires in the San Diego Unit by protecting assets at risk through focused Pre-Fire Management prescriptions and increasing initial attack success.

**SECTION D**

**SAN DIEGO UNIT**

**COLLABORATION**

## **COLLABORATION**

In the San Diego Unit, there are ongoing meetings with Local Government, Federal Government, private and public groups which contribute to this fire plan. The various groups and agencies will be identified in another section of the fire plan.

**SECTION E**

**SAN DIEGO UNIT**

**ASSETS AT RISK**

## **ASSETS AT RISK**

As part of the fire plan process, data for the Assets at Risk has been compiled by staff in CDF's Fire and Resource Assessment Program (FRAP) in Sacramento. Assets at Risk refers to anything that has the potential to be burned or damaged by wildfire in an area.

The San Diego Unit has a multitude of natural and manmade assets that are at risk when major wildfires occur.

### **WATER**

Watershed areas are a concern because of soil erosion after a wildfire which damages water flumes and storage facilities.

### **STRUCTURES**

This county has experienced a massive loss of structures and businesses in the past, both in city neighborhoods and the wildland urban interface. Communities like Julian, Cuyamaca, Ramona, Valley Center, Palomar Mountain, Ranchita and the South County communities of Dulzura, Jamul, Potrero, Campo and many other areas in the county will always have a high risk of structure loss due to wildfire.

### **RECREATION AND SCENIC**

Recreation is an important industry in the unit. Camping, fishing, wine tasting and many other leisure activities account for a large percentage of the revenue generated in the wildland urban interface.

### **AIR QUALITY**

Prescribed burn projects minimize the negative effects that wildfires have on the air quality. Prescribed burning is performed when the weather conditions will allow quick dispersal of the smoke generated by the burn. These burns are aimed at reducing the amount of heavy brush and dense forest fuels. The lighter fuels, which exist after a prescribed burn, produce considerably less smoke when burned by a wildfire.

### **WILDLIFE**

Most of the unit consists of brush, forest and grass covered lands which provide excellent habitat for both game and non-game wildlife. Many wildfires burn at such a high intensity that they affect wildlife by damaging or destroying their fragile habitat. This can be mitigated through the use of prescribed fire.

### **INFRASTRUCTURE**

Damage to major power lines supplying power to San Diego county can occur during a wildfire in the unit, as well as communications systems located on mountain tops.

**SECTION F**

**SAN DIEGO UNIT**

**THE FIRE SITUATION**



## **THE FIRE SITUATION**

### **GENERAL DESCRIPTION**

The San Diego Unit fire history map shows that the county has had a significant history of major fire incidents over the last 50+ years. Almost every community in the unit has been threatened by wildfires that have occurred during this period. Readily available fuels, influenced by topography and Santa Ana winds year round, will always present suppression problems in the Unit. Combine these factors with the populace continuing to move to the wildland urban interface and reduced budgets, will continue to hinder our efforts to stay on top of this situation.

### **GENERAL DESCRIPTION OF THE DESIRED FUTURE CONDITION**

Our plan to reduce the occurrence of large damaging wildfires will include Battalion Pre-Fire plans, fuel breaks (both shaded and non-shaded), defensible perimeters around communities, clearances around structures and a diverse mosaic of fuels and continuity which would help with strategies to combat wildfires. This effort is dependent on staffing and funding available to implement these projects.

### **IGNITION WORKLOAD ASSESSMENT**

#### **FUELS**

Analysis of fuel type and conditions present in the San Diego Unit show that over 66% of the fuels within the county are ranked in the high to very high range with the remainder being ranked in the medium range.

#### **WEATHER**

San Diego County has the potential of experiencing “Severe” to “Extreme” fire weather on any given day (including winter months). Normal weather conditions for the summer months place the county in a “High fire danger” classification.

#### **FIRE HISTORY**

San Diego County has a long history of major fire occurrence distributed throughout the county with only the lower desert and immediate coastal areas excluded.

#### **FRAP ANALYSIS**

Analysis by FRAP illustrates that nearly the entire San Diego Unit, again with the exclusion of the deserts and some coastal zones, is rated as having a “Very High

Probability of Burning”. Additionally FRAP has determined nearly all of the San Diego Unit to be a “High Fire Threat Zone”.

## **CONCLUSION**

These factors, combined, demonstrate the need and benefit of the application of Pre-Fire Management efforts to any portion of the San Diego Unit. Therefore, the Unit will continue its efforts, as previously outlined, to initiate projects in cooperation with partner stakeholders and the public in and around identified communities at risk.

## **VEGETATIVE WILDFIRE FUELS**

Appropriate Fuels Management Strategies and Tactical Actions, including vegetation management, resource management, and assistance to landowners, are covered in the appendix section under Strategies.

## **STRUCTURE FUELS**

This is an ongoing assessment throughout the Unit. Each Battalion is identifying areas of concern in each initial attack area. Engine companies are continuing to make contact with homeowners and educating them on how to prepare their homes against wildfires.

## **FREQUENCY OF SEVERE FIRE WEATHER**

Because of extreme fire weather in the Unit, strategic solutions have been developed. During days of high wind events, the Unit will cover additional fire engines (reserve and camp), additional handcrews, mobilize Santa Ana strike teams from all over the state, receive more air tankers from other bases, and notify the public via media to help prepare themselves in case of wildfires in the county.

**SECTION G**  
**SAN DIEGO UNIT**  
**PROJECTS**

The following is an accounting of the Resource Management activities as they relate to pre-fire planning and action in the San Diego Unit.

**PAST PROJECTS**

- Pine Mountain-Mt. Laguna-160 acres (*Burned in Cedar Fire 03*)
- West Mesa-373 acres (*Burned in Cedar Fire 03*)
- U. S. Fish and Wildlife Service Fuel Breaks (*Burned In Cedar Fire 03*)
- Campo Railroad Right of Way Burn-10 acres
- East Mesa/Tragedy-300 acres (*Burned in Cedar Fire 03*) *Fire suppression personnel successfully used this project to divert the Cedar Fire 03 away from Mt. Laguna and Pine Valley.*

**PRESENT PROJECTS**

- Bell Valley-1,084 total (215 acres left to burn)
- Deer Springs Fuel Break
- International Fuel Break-307 acres
- Sunrise Fuel Break-Julian (*Partially Burned in Cedar Fire 03*) San Vicente
- Communities Protection Program (*Burned in Cedar Fire 03*)
- Dulzura Fuel Break-Coop. with BLM
- Beauty Mountain Fuel Break
- SDG&E 500Kv Line Fuel Break
- Rancho Jamul Roadside Burns-10 acres (third year in a row) *Fire suppression personnel successfully used this project to divert the Otay Fire 03 away from Jamul.*
- Palomar State Park

**FUTURE PROJECTS**

- Corte Madera Ranch-1500 acres
- Lawson Valley-326 acres
- Henson-Potrero
- North Slope-350 acres
- Palomar Observatory

**FOREST HEALTH ENHANCEMENT PROGRAM (FHEP)**

| FHEP PROJECTS LIST         | Project Acres | Acres Completed | PLANNING | ACTIVE | COMPLETED |
|----------------------------|---------------|-----------------|----------|--------|-----------|
| BAILEY MEADOWS - C.P./T.C. | 200           | 200             |          |        | x         |
| BANNER GRADE - T.C.        | 271           | 271             |          |        | x         |
| BIRCH HILL - C.P.          | 483           | 483             |          |        | x         |
| BIRCH HILL - T.C.          | 37            | 37              |          |        | x         |
| CFIP - BEHIRENDET          | 24            | 0               |          | x      |           |
| CFIP - CARTER              | 19            | 8               |          | x      |           |
| CFIP - DAVIS               | 80            | 0               |          | x      |           |
| CFIP - FITZ                | 40            | 30              |          | x      |           |
| CFIP - FRAZEE              | 36            | 27              |          | x      |           |
| CFIP - KRTEK               | 43            | 20              | x        |        |           |

| <b>FHEP PROJECTS LIST</b>          | <b>Project Acres</b> | <b>Acres Completed</b> | <b>PLANNING</b> | <b>ACTIVE</b> | <b>COMPLETED</b> |
|------------------------------------|----------------------|------------------------|-----------------|---------------|------------------|
| CFIP - CAMP MARSTEN                | 250                  | 0                      | x               |               |                  |
| CFIP - SIMPSON                     | 20                   | 10                     |                 | x             |                  |
| CFIP - CAMP STEVENS                | 256                  | 0                      | x               |               |                  |
| CFIP - UTT                         | 40                   | 24                     |                 | x             |                  |
| LOS COYOTES -ASSESSMENT            | 11,520               | 11,520                 |                 |               | x                |
| PALOMAR STATE PARK RD.- T.C./C.P.  | 92                   | 92                     |                 |               | x                |
| PALOMAR/CANFIELD - T.C.            | 98                   | 98                     |                 |               | x                |
| PALOMAR OBSERVATORY - VMP          | 1640                 | 0                      |                 |               |                  |
| VOLCAN MOUNTAIN - PERSCRIPTION     | 1154                 | 385                    |                 | x             |                  |
| WHISPERING PINES - C.P.            | 306                  | 306                    |                 |               | x                |
| WHISPERING PINES - T.C.            | 127                  | 127                    |                 |               | x                |
| CORTE MADERA RANCH - T. C.         | 219                  | 66                     |                 | x             |                  |
| CUYAMACA STATE PARK                | 100                  | 25                     |                 | x             |                  |
| LAKE CUYAMACA REC. & PARK DISTRICT | 24                   | 12                     |                 | x             |                  |
| PALOMAR STATE PARK - PHASE #1      | 48                   | 48                     |                 |               | x                |
| PALOMAR STATE PARK - PHASE #2      | 31                   | 15                     |                 | x             |                  |
| PALOMAR STATE PARK - PHASE #3      | 53                   | 0                      | x               |               |                  |
| JULIAN COMMUNITY SERVICES DISTRICT | 44                   | 33                     |                 | x             |                  |
| WILLIAM HEISE COUNTY PARK          | 27                   | 27                     |                 |               | x                |
| W. HEISE COUNTY PARK - ASSESSMENT  | 200                  | 200                    |                 |               | x                |
| CORTE MADERA RANCH - VMP           | 4657                 | 1164                   |                 | x             |                  |
| PINE VALLEY FUEL BREAK             | 23                   | 19                     |                 | x             |                  |
| SUNRISE/JULIAN FUEL BREAK          | 36                   | 29                     |                 | x             |                  |
| CUY. ST. PK.-HWY. 79- PERSCRIPTION | 747                  | 747                    |                 |               | x                |
| VOLCAN MOUNTAIN - PLANTING         | 1154                 | 215                    |                 | x             |                  |

**GRANT PROGRAM: Cooperative Forest Health, Prevention & Suppression (SPCH-P&S) [CDF INDEX/PCA: 9520/96160]**

What has been accomplished to date:

- 1) CDF Forestry Staff provided professional forestry services and fieldwork for numerous projects for the San Diego County Forest area. Such responsibilities include:
  - a) identifying dead, dying, and diseased trees;
  - b) developing prescriptions for forest health projects;
  - c) locating participating project properties while interfacing with county GIS staff;
  - d) conducting on-site visits to ensure environmental protections during forest health projects;
  - e) watershed evaluation and assessment;
  - f) assisting CDF Pest Management Specialists in pest and disease assessment;
  - g) maintaining on-going forestry assistance programs; and
  - h) forest health project set-up. These included the following projects implemented by CDF Conservation Camps:
    - i) Palomar State Park Entrance Road Travel Corridor Safety Zone (Puerta

- La Cruz Conservation Camp)
- ii) Cuyamaca State Park Hazard Reduction, Descanso (McCain Valley Conservation Camp and La Cima Conservation Camp)
- iii) Sunrise Fuel Break, Julian (McCain Valley Conservation Camp and La Cima Conservation Camp)
- iv) Corte Madera Ranch Forest Health Project (McCain Valley Conservation Camp)
- v) Lake Cuyamaca Recreation and Park District Hazard Reduction (La Cima Conservation Camp)
- vi) Frank Lane Park Hazard Reduction, Julian Community Services District (La Cima Conservation Camp)

CDF Forestry Staff also met with San Diego County, contractors, Fire Safe Councils, Forest Service, and NRCS representatives, to coordinate objectives. They also assisted in developing a logging plan for the evacuation corridor on Highway 79 within Cuyamaca State Park.

- 2) CDF Archaeologists assisted CDF Forestry Staff in projects under development On Cuyamaca State Park and Corte Madera Ranch for archaeological resources that might be placed at risk during equipment use and subsequent fuels treatments.
- 3) CDF Forestry Staff assisted San Diego State University Geography Department under the direction of Dr. Doug Stow on a continuing project to monitor and map forest health change using MODIS near infrared imagery.
- 4) CDF Forestry, GIS and Pest Specialist Staff attended the San Diego County

Forest Area Safety Taskforce (FAST) Planning Meetings. These meetings meet on a monthly schedule and are designed to plan and coordinate activities to address the massive forest health and tree mortality issues in the county. The public, members of fire-safe councils, local, state and federal agencies, contractors and others attend these meetings at various locations with San Diego County.

**GRANT PROGRAM: Cooperative Fire Assistance (SPCF)**  
 [CDF INDEX/PCA: 9520/96171]

What has been accomplished to date:

- 1) CDF Puerta La Cruz Conservation Camp Crews have created a 200 foot-wide travel corridor safety zone along Palomar State Park entrance road. Crews have felled 50 dead trees, and 865 tons of slash was treated by chipping and burning in piles.
- 2) CDF McCain Valley Conservation Camp crews have felled and removed 100 dead hazard trees on Cuyamaca State Park near the community of Descanso. Also working on this project, CDF La Cima Conservation Camp crews have

- felled and removed 350 dead hazard trees and treated 156 tons of slash and brush by chipping.
- 3) CDF McCain Valley Conservation Camp crews have felled 7 dead hazard trees and prepared 6 acres for future burning on the Corte Madera Ranch Project.
  - 4) CDF La Cima Conservation Camp crews have worked to improve watershed conditions at Lake Cuyamaca Recreation and Park District near Julian. Crews have felled 114 dead hazard trees.
  
  - 5) CDF La Cima Conservation Camp crews, working on Frank Lane Park, Julian Community Services District, have felled and removed 123 hazardous dead trees and treated the slash by chipping and pile burning.

GRANT PROGRAM: Urban and Community Forestry (SPUF)  
[CDF INDEX/PCA: 9520/96172]

What has been accomplished to date:

- 1) CDF Forestry Staff, in collaboration with the Julian Community Services District, has planned for the future development of the Frank Lane Park Community Forest Demonstration Area. This is a follow up project after the completion of the removal of dead hazard trees and treatment of slash on 27 acres of park land completed under Grant Program-Cooperative Forest Health, Prevention & Restoration (SPCH-P&R).

GRANT PROGRAM: Cooperative Fire Assistance (SPCF)  
[CDF INDEX/PCA: 4000/96192]

What has been accomplished to date:

- 1) CDF McCain Valley Conservation Camp crews have maintained and improved the Sunrise Fuel Break near Julian. McCain Valley crews felled and removed 66 hazard trees, and treated 357 tons of slash and brush by chipping. Also working on this project, CDF La Cima Conservation Camp crews have felled and removed 50 dead hazard trees and treated 975 tons of slash and brush by chipping.

- 2) CDF McCain Valley Conservation Camp crews have created the Pine Valley

Community Fuel Break near Pine Valley. McCain Valley crews prepared 100 acres for broadcast burning in the spring. Also working on this project, CDF La Cima Conservation Camp crews have treated 156 tons of slash and brush by chipping.

GRANT PROGRAM: Forest Stewardship (SPST)  
[CDF INDEX/PCA: 4000/96193]

What has been accomplished to date:

CDF created two stewardship positions funded by this grant; *i*) a Limited Term (Licensed) Registered Professional Forester (RPF), and *ii*) a Limited Term Forestry Assistant II. These positions provide advice and fieldwork assistance for the San Diego County Forest area.

During this report period the Stewardship Foresters provided the following services:

- 1) Identifying and marking dead, dying, and diseased trees.
- 2) Developing prescriptions for hazardous fuel tree removals.
- 3) Locating participating project properties, and transmitting project locations and activities to county GIS staff.
- 4) Site visits to ensure environmental protections during dead tree removal operations.
- 5) On the ground pre-project flagging for tree removal operations.
- 6) Meeting with San Diego County, contractors, Fire Safe Councils, Forest Service, and NRCS representatives to coordinate objectives.
- 7) The RPF developed a logging plan for the evacuation corridor within Cuyamaca State Park adjacent to State Highway 79. The CDF RPF and the CDF Staff Archaeologist made several field visits with State Park Ecologists and Archaeologists to help identify and address sensitive resource issues.
- 8) The Forestry Assistant II developed a logging plan for the evacuation corridor within Palomar State Park adjacent to State Highway 76. The Forestry Assistant II made several field visits with State Park ecologists and archaeologists to help identify and address sensitive resource issues.
- 9) A fire safe presentation was given to the community of Pine Hills that discussed vegetation clearance around housing, and the current state of bark beetle infestation.

The RPF position was filled during 2004 and during the dates covered by this report, however at the end of December 2004, the RPF promoted to a permanent position at another unit outside of Southern California. CDF has found that there is a lack of qualified licensed forester candidates willing to locate in Southern California

#### **UNIT FUEL REDUCTION EFFORTS (NON PROJECT TYPE)**

The San Diego Unit has assisted in the reduction of fuel loading and hazard abatement through the burn permit program. In the year 2004, CDF personnel issued a total of 4,402 piled vegetation burning permits to local landowners.

The Unit's LE-38 inspection program has completed 41,947 inspections in 2004. Of these inspections, 40,859 were in compliance and 1,088 were in violation. After the second inspection 981 were in compliance and 107 were forwarded to the County of San Diego for processing and enforcement.

The LE-38 program was expanded in FY 03-04 to include the San Diego County



clearance ordinance requiring vegetation modification out to 100 feet from structures. This addition to the program significantly expanded “defensible space” around structures in the SRA of San Diego County.

### **FOREST AREA SAFETY TASK FORCE (FAST)**

This section outlines the efforts related to the Units management of the Proclaimed State of Emergency related to Dead, Dying, and Diseased trees in the mountain areas of Southern California.

### **PEST DETECTION – DEVELOPING ESTIMATES OF TREE MORTALITY**

A partnership has developed between CDF and San Diego State University, Geography Dept. to monitor and map forest health change using MODIS near infrared imagery (Cont. Dr. Doug Stow).

The County of San Diego is using property parcel, vegetation, and roads data to develop maps and plans for projects to be prioritized by SD FAST.

### **GIS COORDINATION/ANALYTIC PRODUCTS – SUPPORTING THE DEVELOPMENT OF A STRATEGIC GIS FRAMEWORK**

San Diego CDF is cooperating with this effort.

### **FUNDING / GRANT UPDATE:**

San Diego County through the USFS & Natural Resources Conservation Service (NRCS) is the sponsor of \$39.9 million dollars of funding to remove dead, dying and diseased timber in the affected areas. CDF San Diego, in conjunction with BDU and RRU, has received \$12,788,658. dollars for the same use. Various Fire Safe Councils in the county have accumulated \$1.2 million dollars for tree removal and other vegetation reduction projects, bringing the grand total to \$41,500,000. It is anticipated that additional funding will be needed in the near future.

### **VEGETATION MANAGEMENT**

Progress has been made by SDG&E, State Parks, various county agencies, private landowners in the removal of Dead, Dying and Diseased trees and other vegetation. This work is helping the county meet its cost share requirements. The FAST vegetation management committee has used a matrix to stratify and prioritize the project work in affected communities simultaneously. Funding mentioned above to be used to implement the priority projects in these affected communities.

### **COMMUNITY PROTECTION PLANNING**

The San Diego County Office of Emergency Services has developed a

“Community Protection and Evacuation Plan” template to help facilitate communities in establishing local “plans.” These plans will include evacuations, safe zones, emergency agency response, critical infrastructure protection, and mitigation strategies. The county with cooperation from FAST, and Fire Safe Councils are presenting this template in town hall-style meetings throughout the county.

## **EDUCATION**

The SD FAST has recognized the importance of an educated public in accomplishing the greater goals of the Task Force. Local residents, recreational users, and the public at large are all recognized as distinct groups, but integral to the success of the greater FAST effort.

## **GREAT ESCAPES**

MVU initiated and developed an original program in community fire education founded upon the individual householder’s responsibility to respond safely and autonomously to catastrophic fire. To foster self-reliance in the general public, the program emphasizes the pre-fire identification and preparation of “survivable spaces”. To help save lives during the Incident itself, it instructs civilians in the tactics used by professional, wildland firefighters—escape routes, safety zones, home refuge, e.g.—as well as strategies to use when overrun by fire.

Entitled “Great Escapes...from Catastrophic Fire”, the program’s core materials include a modular Power Point presentation, CD, four pieces of original shelf literature, and binders with “print kits” for the County’s Fire Safe Councils, press corps, and FAST. Additional topics covered include: “fire safe” landscaping; home preparation for fire; the principles and dangers of heat; “fire safe” clothing, first-aid for burns; pet disaster planning; and special considerations regarding the elderly—a rapidly growing and at-risk sector of the backcountry’s population whose specialized evacuation problems have not yet been resolved by local emergency management.

The Unit contracted an external “community liaison” to develop the program as well as present it to selected targets as per directive of the Unit Chief.

## **FOREST HEALTH**

The FAST recognizes the need to work toward a healthy forest environment through follow-up treatments including methods such as regeneration, brush control, and thinning. These treatments will ensure fire-resilient forest conditions that will support water quality, wildlife, recreation etc.

- Forest Health Condition Study
- Tree Planting activities – Volcan Mountain
- Green Tree Thinning

## **SPATIAL DATA**

A collaborative effort involving San Diego County, CDF's Fire Resource Assessment Program (FRAP), and Environmental Systems Research Institute (ESRI) has developed. This effort includes development of spatial data that will support planning, education, web-based access, and historical documentation of the actions taken to mitigate hazards associated with this forest health event.

Also, see "Pest Detection..." above for coop projects with San Diego State University and the County of San Diego. San Diego Gas and Electric (SDG&E) has been and will continue to be an indispensable resource for GIS data.

## **GRANT ACCOUNTING**

Cooperative Forest Health – Prevention and Suppression  
Most activity under this grant January 1 to June 30, 2005 has been land management planning and coordination of FAST actions.

February 2-12, 2004 – The San Diego Unit had a Forester II on assignment for vegetation health assessments, fostering participation in forestry assistance programs, and monitoring and evaluation.

Cooperative Forest Health – Prevention and Restoration  
Activity under this grant January 1 to June 30, 2004 has been land management planning (204,000 acres within the planning area).

### Cooperative Fire

Activity under this grant January 1 to June 30, 2004 has been forest health stand treatment (92 days @ 1.5 ac/day = 138 acres)

### Urban and Community Forestry

Activity under this grant January 1 to June 30, 2004 has been a demonstration of land management activities and plans to the Board of Forestry May 4-6, 2004 and a demonstration of land management activities and plans to the University of California Extension natural resource managers May 5, 2004. The same demonstration was given to the San Diego Fire Recovery Network May 21 and 28, 2004.

### Forest Stewardship

Activity under this grant January 1 to June 30, 2004 has been internal work culminating in the hire of a Registered Professional Forester (RPF) effective July 1, 2004. The RPF will act as the Unit Forest Pest Specialist and Forestry Assistance Specialist.

## **FHEP ASSESSMENT**

### **PROBLEMS**

Lack of staffing dedicated to the implementation of these grants has been the main problem to overcome. The staffing problem was exacerbated by the State's budget issues and a decreased ability to respond promptly to this forest health emergency.

### **SUCSESSES**

San Diego CDF has been able to use the lack of staffing to an advantage by focusing on plan development and ICS organization building. The San Diego Unit is poised to take better advantage of the situation and resources allocated to it in the wake of this planning effort. Additionally, CDF has been able to develop a strong cooperative relationship with all agencies involved in the FAST effort. This will help all agencies to run a virtually seamless County/Unit wide operation.

### **CHANGES NEEDED**

The Unit feels like a good plan has been developed. The plan is seen as fluid with flexibility to change as needed. At this time no changes are needed. Regular assessment of the plan will identify needed changes and an accounting of those needs if any will be made in future reports.

### **FOR THE FUTURE**

As was illustrated in the assessment section of this plan, anywhere within the San Diego Unit is subject to fire occurrence. Therefore, any portion of the Unit will benefit by the application of Pre-Fire Management techniques. Plans are being developed for all battalions to employ all pre fire tools available as applicable.

San Diego is likely to continue to have fire problems along the international border due to the illegal migration that continues to take place. This problem will also be carried further north along the migration corridors into other portions of the county. This area will continue to be a priority for CDF and Cooperators for Pre-Fire applications.

Additionally, the continued drought and associated dead, dying, and diseased trees and other vegetation will cause "average" fires to resist standard control measures for many years to come.

CDF will continue to work with other agencies in the area of Fire Management on the Multiple Species Conservation Plan and Multiple Habitat Conservation Plan Lands.

As the Fire Plan assessments are completed and new projects initiated, new stakeholders will be identified and called upon to participate in the implementation of these projects.

Interest within the Unit toward Pre-Fire Management is at a high level and we in CDF must take the lead to continue this interest and move the program forward.

**SECTION H**

**SAN DIEGO UNIT**

**INSTITUTIONAL ISSUES**

## **INSTITUTIONAL ISSUES**

CDF San Diego Unit has had opportunities to work and train firefighters from the Republic of Mexico. This is possible because of the great working relationships with numerous local, state and federal agencies in Mexico. The bi-national working agreement has given CDF the benefit of entering Mexico to assist Mexican firefighters in extinguishing wildfires before they enter the U. S. Overall, both countries benefit from this working relationship. Also, CDF continues it's tradition of having strong ties to local, federal, military and Indian reservations.

Accomplishing Pre-Fire Projects in the Unit is dependent on available resources, staff and funding. The majority of the constraints encountered are a lack of staff (GIS support), bogged down in numerous meetings, and not being able to complete projects. The workload increases with SRA and DPA Updates, Fire Perimeters, CWPP, Unit Fire Plan, Grants and Contracts, SRA Fees, Vegetation and Resource Management Projects and numerous GIS Projects with no support or additional staffing.

**SECTION I**  
**SAN DIEGO UNIT**  
**APPENDIX**



## **STRATEGIES**

The San Diego Fire Management Plan for 2005 will incorporate two distinct strategies for implementation. These strategies are outlined below:

The first strategy will make use of the Assets At Risk Assessment Program to target specific areas for application of Pre-Fire programs. The intent is to focus on those assets found to be most at risk and to implement projects to mitigate the risk. This strategy in many cases requires a shift to smaller more defined projects close to improvements. These smaller projects include such things as chipping, hand clearing / pile burning, small LE-7 burns, community fuel breaks and enhanced weed abatement programs. Due to the nature of these projects and their proximity to the communities, stakeholder support and participation will be imperative. The formation of local community groups such as Fire Safe Councils will assist in having a strategy that will succeed. Along with this strategy, up front cost to CDF will also rise, however the potential for significant savings should be realized by these efforts.

The second strategy is to target areas identified by the assessment process as having old decadent fuels that will readily support development of large fires. Attempts will be made to break up these fuel beds using Vegetation Management programs, large scale LE-7 burns and strategically placed fuel breaks and fire defense improvements. The goal of this strategy will be to create a mosaic pattern of fuels preventing the development of large fuel driven fires that may impact communities.

These two strategy approaches, if successfully implemented, will reduce future losses and suppression costs, while enhancing both public and firefighter safety. Efforts to reclaim and enhance existing fire defense improvements are underway and will continue. The key to successful implementation will hinge not only on the CDF effort, but also on stakeholder participation and support.

The Unit is an active component in the development of new chaparral management guide lines for Southern California. This effort will culminate in January of 2005 with a "Living with Fire in the Chaparral Ecosystem".

## **STAKEHOLDERS**

The following stakeholders are involved with CDF in cooperative ventures in the San Diego Unit:

### **Fire Safe Councils**

Fire Safe Councils of Greater San Diego

## **Barrett Junction FSC**

Meetings:

### **Leon & Christine Herzog**

Business:

8974 Westhill Road  
Lakeside, CA 92040  
619-468-3416  
619-561-0372  
619-561-0372 Fax  
[Cherzog@nethere.com](mailto:Cherzog@nethere.com)

## **Carveacre FSC**

Meetings: Second to last Sunday of month all are at 5 PM.

### **David Duke**

PO Box 1576  
Alpine, CA 91903  
619-445-9765  
619-445-3574 Fax  
[betsduke@hotmail.com](mailto:betsduke@hotmail.com)  
501(C) 3

### **Wende Cornelius**

Secretary

619-445-8232 \* 2<sup>nd</sup>  
619 733-5579 \*cell 3rd  
[wecornelius@att.net](mailto:wecornelius@att.net) \* 1st  
USFS, John Truitt  
619-445-7053  
[jtruitt@fs.fed.us](mailto:jtruitt@fs.fed.us)  
HOA-501(C) 3

## **Chihuahua Valley FSC**

Meetings: not set up yet

### **Ms Sam Kemp**

38124 Valley Oak Lane  
Warner Springs, CA 92086  
951-767-7305 \*  
[junglegirlsam@netzero.net](mailto:junglegirlsam@netzero.net)  
Warner Springs CDF  
Capt. Heggie 760-782-3560  
BLM Clay Howe  
858-676-0894  
Volunteer FD Sunshine Summit

## **Chimney Canyon FSC**

Meetings: 2nd Thursday of each month 7:30 PM at D'lish restaurant, Pomerado and Poway Parkway

### **Jerry Mitchell**

12056 Medoc Lane  
San Diego, CA 92131  
858-271-6303  
858-945-6303  
[papazip@excite.com](mailto:papazip@excite.com)  
City Station 37  
HOA-501(C) 3

## **Crest FSC**

Meetings:

### **Kandhy Franklin**

Fire Disaster Recovery Center-Crest  
120 North Park  
El Cajon, CA 92021  
619 328-0900  
619-328-0903 [crestrecovery@yahoo.com](mailto:crestrecovery@yahoo.com)

## **Deer Springs FSC**

Meetings: First Friday every other month, 4 pm, Hidden Meadows Community Center, The Pavilion 10141 Meadow Glen Way East Hidden Meadows, Escondido

### **Thomas Francl**

28993 Mountain Meadow Rd.  
Escondido, CA 92026  
760-749-9161  
**760-751-1111. \***  
[dynamite@pacbell.net](mailto:dynamite@pacbell.net)  
[admin@DeerSpringsFireSafeCouncil.com](mailto:admin@DeerSpringsFireSafeCouncil.com) \*

### **Bob Fry**

[rhfrey@earthlink.net](mailto:rhfrey@earthlink.net)  
Rich Bolton  
Battalion Chief  
Deer Springs  
760-749-8001  
CDF- 760-749-8001  
Red Mountain CDF- 760-728-1323  
501(C) 3

## **Descanso Emergency Preparedness Group**

Meetings: 2<sup>nd</sup> Wednesday @7pm

### **Don Bosch**

PO Box 1  
Descanso, CA 91916

**John Elliot**  
619-445-4510

**Peggy Machado** Secretary  
PO Box 91  
Descanso, CA 91916  
619-445-5279  
619-445-4891 Fax  
[Peggy.Machado@sdcountry.ca.gov](mailto:Peggy.Machado@sdcountry.ca.gov)

**Dave Somes**  
E-mail: [dave.somes1@l-3com.com](mailto:dave.somes1@l-3com.com)  
Home Phone: 619-445-1097  
Work Phone: 858-694-7638  
Alpine FPD, USFS, CDF

## **Encanto FSC**

Meetings: 1<sup>st</sup> Thursday @12pm  
Location: TBA, rotates.

### **Sharon Whitehurst-Payne**

1504 Republic Street  
San Diego, CA 92114  
(619) 527-7169  
[swpayne@sbcglobal.net](mailto:swpayne@sbcglobal.net)

San Diego City Fire Department  
Eddie Villavicencio  
(619) 533-4435  
(619) 980-0068 cell  
Lt. Marvin Shaw, SD Police Dept.  
(619) 564-3570

Applying for 501(c)3

## **Fallbrook FSC**

Meetings: The first Thursday of every month at 3 p.m. at the Community Baptist Church 721 S. Stage Coach Rd.  
Fallbrook

**Tracy Ragsdale**  
1852 N. Santa Margarita  
Fallbrook, CA 92028  
760-451-9850  
760-451-9878 Fax  
[splace2@juno.com](mailto:splace2@juno.com)

**Dorothy Roth**  
760-728-1100 Work

**Rich Stanton**  
760-723-2416  
[strlmguy@aol.com](mailto:strlmguy@aol.com)

North County FDP  
760-723-2012  
Chief-Bill Metcalf  
Steve Abbott  
CDF-760-728-2422  
<http://www.fallbrookfiresafecouncil.org>  
CDF  
Sheriff-Cliff Johnson  
HOA-501(C) 3

## **FSC of Greater Julian**

Meetings: 3rd Mondays at 5:30 PM  
St. Elizabeth's Church 4th and B Street Julian

### **Bruce & Chris Tuthill**

PO Box 1514  
Julian, CA 92036  
760-765-4703  
760-765-3200  
**619 743-1042\***  
[firesafe@julianweb.com\\*](mailto:firesafe@julianweb.com)  
[graceplace@earthlink.com](mailto:graceplace@earthlink.com)  
501(C) 3

### **Kevin Dubler**

Julian/Cuyamaca FPD  
PO Box 33  
Julian  
760-765-1510  
USFS  
CDF-760-765-0511  
San Diego County Sheriff  
HOA-501(C) 3

Banner Chapter  
Burned Out-Inactive

### **Jai Bastian**

No answer  
760-765-2670/760-765-2253

Julian Estates Chapter

Burned Out

### **Cheryl Brown**

PO Box 2183  
908 Wild Rose Road  
Julian, CA 92036  
760-765-3740  
[Saddlehill1@earthlink.net](mailto:Saddlehill1@earthlink.net)

Kentwood in the Pines  
Chapter Burned Out

**Jim Rymer**  
PO Box 1302  
Julian, CA 92036  
760-765-1491

**Ellen Rice**  
PO Box 52  
Julian, CA 92036  
760-765-3570  
[ellenrice@hotmail.com](mailto:ellenrice@hotmail.com)

**Kentwood II Chapter  
Burned Out**

**Tom & Betty Gorton**  
PO Box 1165  
Julian, CA 92036  
760-765-3313  
[tgorton1@earthlink.net](mailto:tgorton1@earthlink.net)

**Kendra Reid**  
Secretary  
PO Box 291  
3944 Cedar Drive  
Julian, CA 92036  
760-765-1775  
619-507-2166 Cell  
619-588-3836 Work  
[kekareid@yahoo.com](mailto:kekareid@yahoo.com)

**Whispering Pines Chapter  
Burned Out-Active**

**Carol & Carl Swepston**  
PO Box 1346  
Julian, CA 92036  
2593 Woodland Road  
760-765-1160  
[flowernuts@sbcglobal.net](mailto:flowernuts@sbcglobal.net)  
[repseal@sbcglobal.net](mailto:repseal@sbcglobal.net)

**Wynola Chapter  
Burned Out**

**John Lutes**  
1308 Lakedale Rd.  
Santa Ysabel, CA 92070  
760-765-2520

**Harrison Park Chapter  
Burned Out**

35237 Pine Tree Lane  
Julian, CA 92036

760-765-3470

**Mark Jackson**

PO Box 1152  
Julian CA 92036  
760-765-1350  
[tiomarko@earthlink.net](mailto:tiomarko@earthlink.net)

**Cuyamaca Woods Chapter  
Burned Out**

**Bonni Cogan-Overmiller**

PO Box 307,  
Borrego Springs, CA 92004  
760-765-3163  
[cogancpa@abac.com](mailto:cogancpa@abac.com)

**Carl Schweikert**

Cuyamaca Volunteer Fire Dept  
760-765-0418

**Jack Shelver**

760-765-3293  
Julian-Cuyamaca FDP  
USFS-CDF  
CDF 760-765-0085

**Lake Cuyamaca Chapter  
Burned Out**

**Melinda Trizinsky**

34603 Apache Drive  
Julian, CA 92036  
760-765-3293/760-765-1564 numbers not in service  
[trizinsky@earthlink.net](mailto:trizinsky@earthlink.net)

**Greater Campo Road FSC**

Meetings: Dulzura/Barrett meets on the 2nd Thursday of every month at 7:00 P.M. at the Dulzura Community Building.  
Potrero meets the last Thursday of the month at 6:30 p.m. at the Potrero Library. Campo/Lake Morena meets every 2nd  
Tuesday of every month from 9:00 A.M. to 11:00 A.M. at the Mountain

**Stacy Magoffin**

21028 D. Barrett Smith Road  
Dulzura, CA 91917  
619-468-3963  
[stmagoffin@juno.com](mailto:stmagoffin@juno.com) \*  
KG6VTL  
Campo CSA #112  
Rural FDP  
CDF  
619-478-5516



## Potrero FSC (sub-council of Greater Campo)

### **Brenda Wise**

Potrero Fire Safe Council

P.O. Box 558

Potrero, Ca. 91963

(619)478-9186

[lwise@aabol.com](mailto:lwise@aabol.com) \*

## **Greater Vista FSC**

Meetings:

### **Margarette A Morgan**

2056 Camino Cantera

Vista, CA. 92084

760-630-7070

760-630-6226 FAX

[morgan7070@cox.net](mailto:morgan7070@cox.net)

## **Mt. Laguna FSC**

Meetings:

### **Pat Deasy-Spinetta**

6402 Elm Crest Drive

San Diego, CA 92119

619-473-8029 Cabin

619-589-1789 Home

619-886-1789 Cell

[pspinetta@cox.net](mailto:pspinetta@cox.net)

CDF Camp Ole, Mike Nobles

610-473-8527

SD County Sheriff

Residential Detective Corporal

Jim Cook

619-473-8774

## **Mt Woodson FSC**

Meetings:

PPM

### **Kathy Michaels**

8963 Complex Drive. Ste B

San Diego, CA 92123-1416

**858-569-8773**

858-569-8782 FAX

[kmichaels@ppm1.net](mailto:kmichaels@ppm1.net)

## **Palomar Mountain FSC**

Meeting Dates: 2nd Saturday of the month @ 10 am in our Fire Station

FSC Mail Box  
P O Box 274  
Palomar Mountain, CA 92060  
**Shana Ackerman**  
PO Box 245  
Palomar Mountain, CA 92060  
**760-742-8787**  
[Shana65@sbcglobal.net](mailto:Shana65@sbcglobal.net)  
HOA-501(C) 3  
Palomar Mountain Volunteer Fire Dept  
Jay Ackerman  
760-742-3701  
[palomarmntfd@aol.com](mailto:palomarmntfd@aol.com)

## **Pine Hills FSC**

Meetings:

**James Carter**  
PO Box 69  
Julian, CA 92036  
**760-765-0688**  
760-765-2731 FAX  
[julnmn@abac.com](mailto:julnmn@abac.com)

## **Rancho Corda Madera FSC**

Meetings:

**Joel Holliday**  
C/O Charles Lee Powell Foundation  
7742 Hershel Ave.  
Suite A  
La Jolla, CA. 92034  
858-459-3699  
[jholliday@clpf.org](mailto:jholliday@clpf.org)

## **Ranches of Palo Verde FSC**

(Alpine)

Meetings:

**Nevill Connell**  
2641 Firebrand Way  
Alpine, CA 91901  
619-659-0458  
[neville.connell@cox.net](mailto:neville.connell@cox.net) \*

### **Sal Casamassima**

2697 Firebrand Place  
Alpine, CA 91901  
619-445-2235  
[saljc@cox.net](mailto:saljc@cox.net)

## **Ramona FSC**

Meetings: Working on it

### **Kristi Mansolf**

15873 Hwy 67  
Ramona, CA 92065  
760-789-7562

**760 445-8545\* cell**

[kmansolf@hotmail.com](mailto:kmansolf@hotmail.com)

CDF

Ramona  
760-789-1150  
Ramona Station #80  
760-788-2222  
Ramona Station #81  
760-741-5512

## **Sherilton Valley FSC**

Meeting: First Thursday in April, July, October, and January @ 7pm, location changes.

[meenglis@cts.com](mailto:meenglis@cts.com)

CDF

### **Sue Shimp**

PO Box 792  
Descanso, CA 91916  
619-445-1466

## **Talmadge FSC (San Diego City)**

Meetings:

### **Kathy Finn**

4714 Adams Ave  
San Diego, CA 92115  
619-283-2588 Home  
619-544-6569 Work  
619-544-6579 FAX  
[tewafinn@hotmail.com](mailto:tewafinn@hotmail.com)

## **Vista Valley Country Club FSC**

Meetings:

**Dean Perringer**

### **AGENCIES**

U.S. Forest Service Cleveland National Forest  
Bureau of Land Management  
Resource Conservation District of Greater San Diego  
California Conservation Corps  
U.S. Fish and Wildlife Service  
California Dept. of Fish and Game  
San Diego County Dept. of Planning and Land Use  
San Diego County Public Works  
Border Agency Fire Council  
Rancho Santa Fe Fire Dept.  
East County Fire Dept.  
California Office of Emergency Services  
San Diego County Office of Emergency Services  
Federal Emergency Management Agency  
Rural Fire Protection District  
U.S. Border Patrol  
Bureau of Indian Affairs  
Local reservation fire depts.  
Local volunteer fire depts.  
San Diego State University  
San Diego County Sheriff's Dept.  
S.D. State University, Geography and Archaeological Information Center  
University of California San Diego  
Cal Trans  
San Diego Gas and Electric

# CDF San Diego Fuel Models

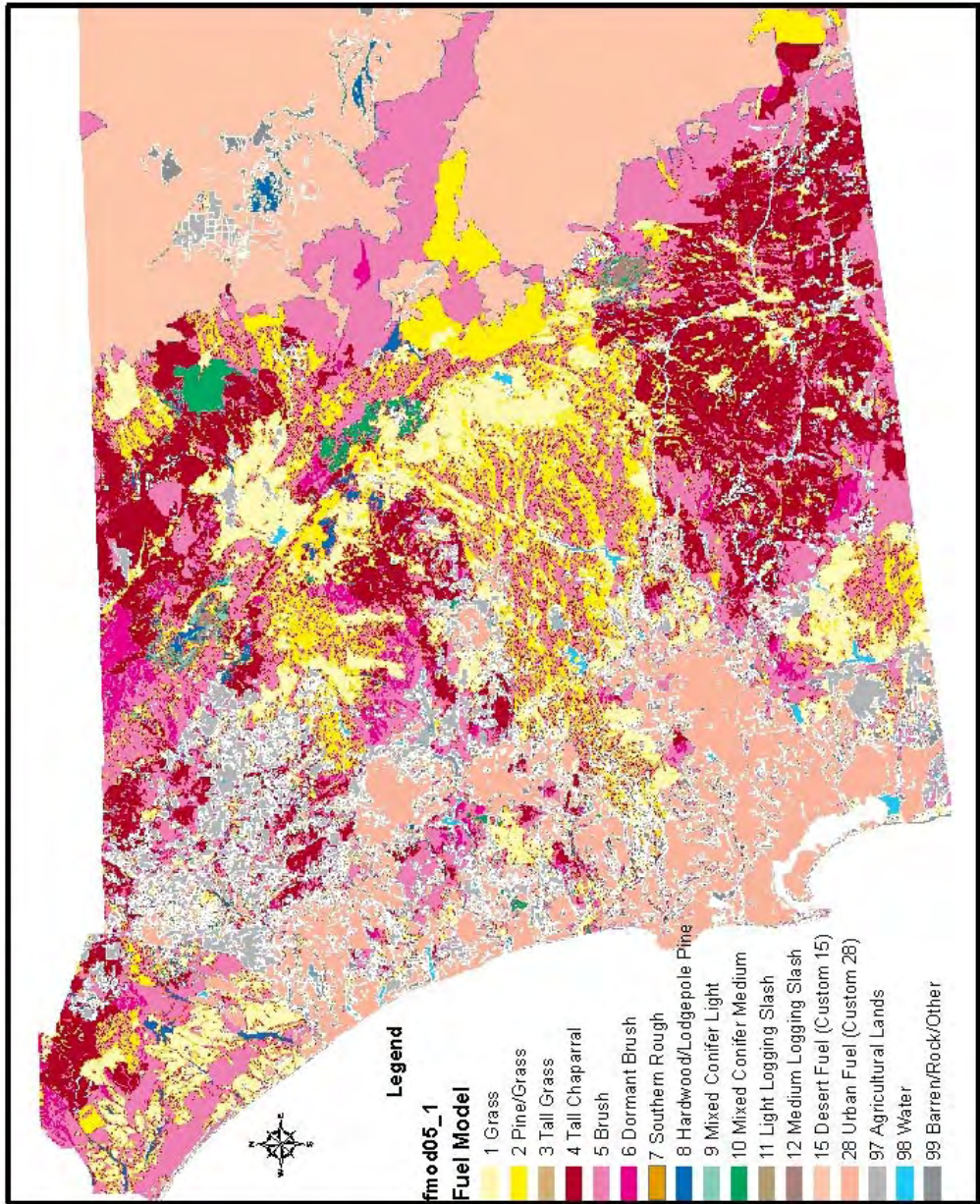
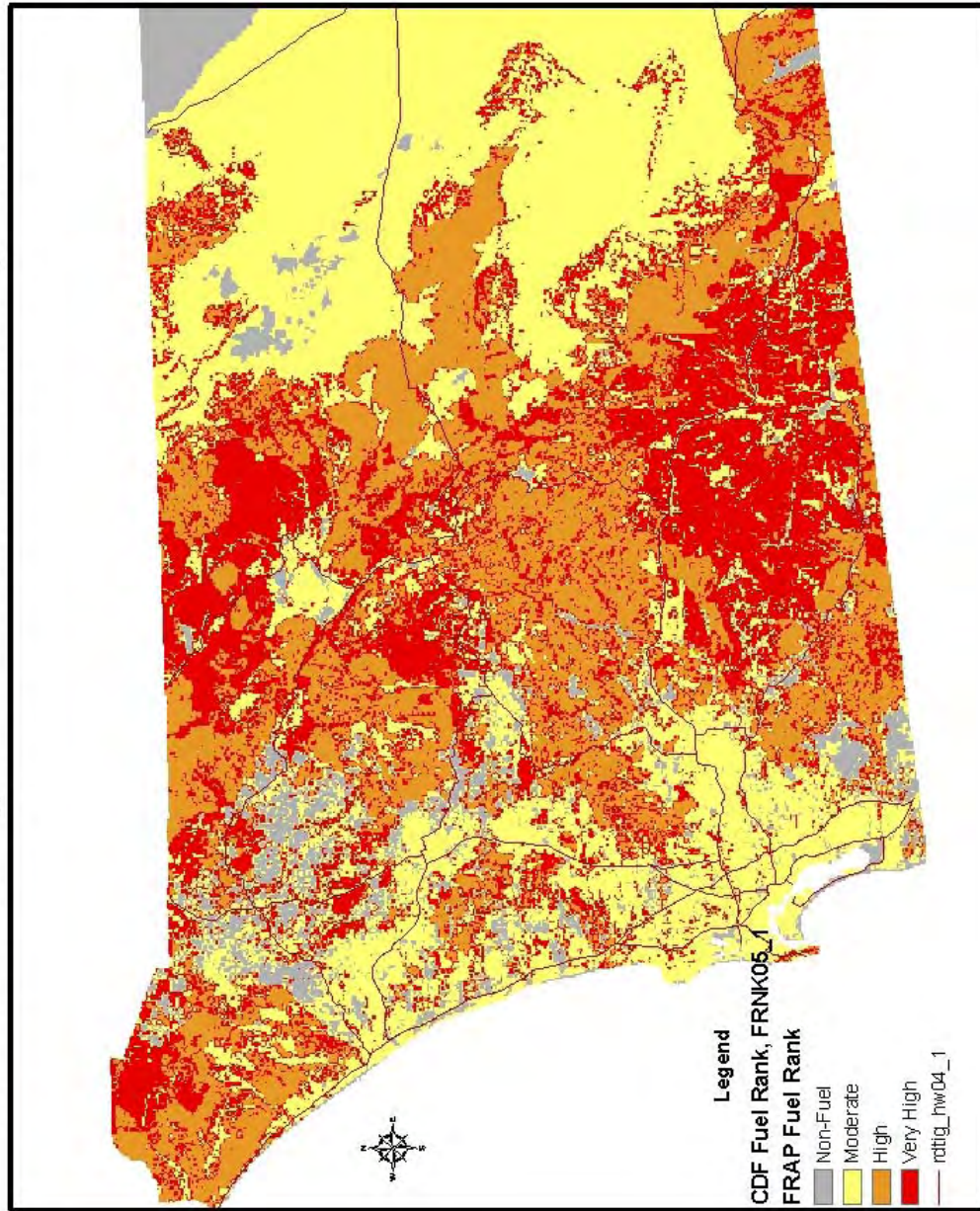


Figure 1 CDF San Diego Fuel Models

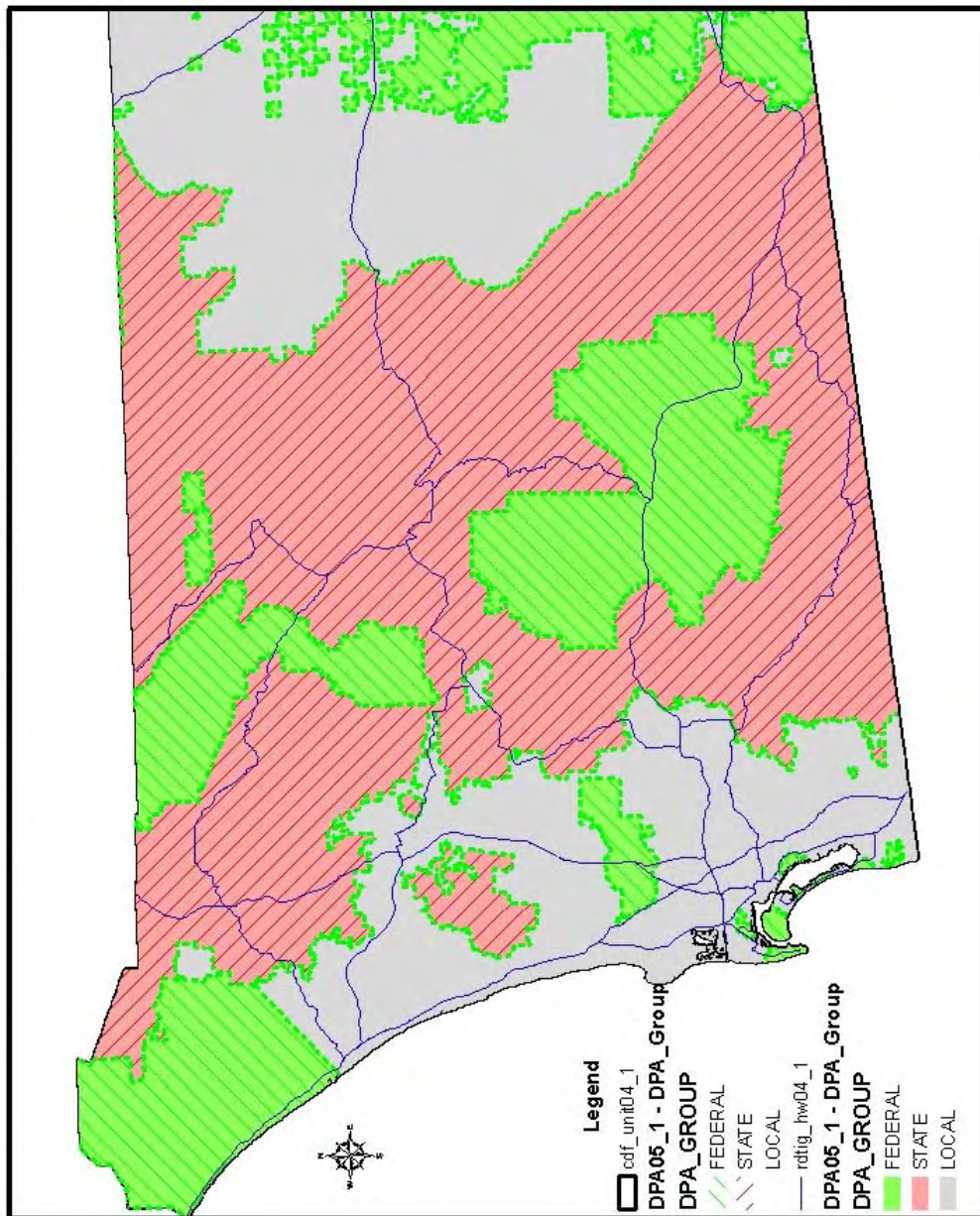


# CDF San Diego Fire Hazard Severity Zones



**Figure 2 CDF San Diego Fire Hazard Severity Zones**

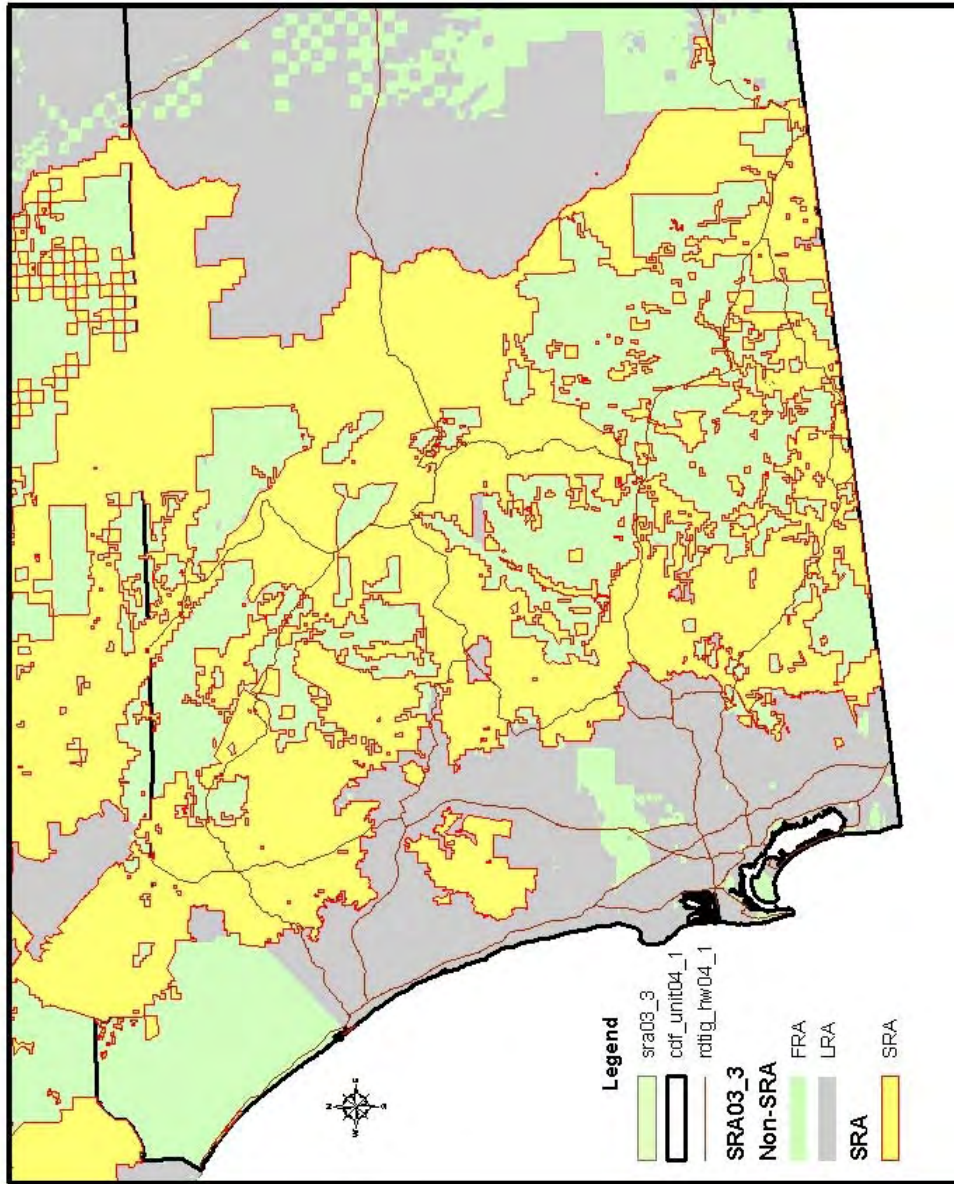
# CDF San Diego DPA



**Figure 3 CDF San Diego DPA**



# CDF San Diego SRA



**Figure 4 CDF San Diego SRA**



# CDF San Diego Fire History 1950-1999

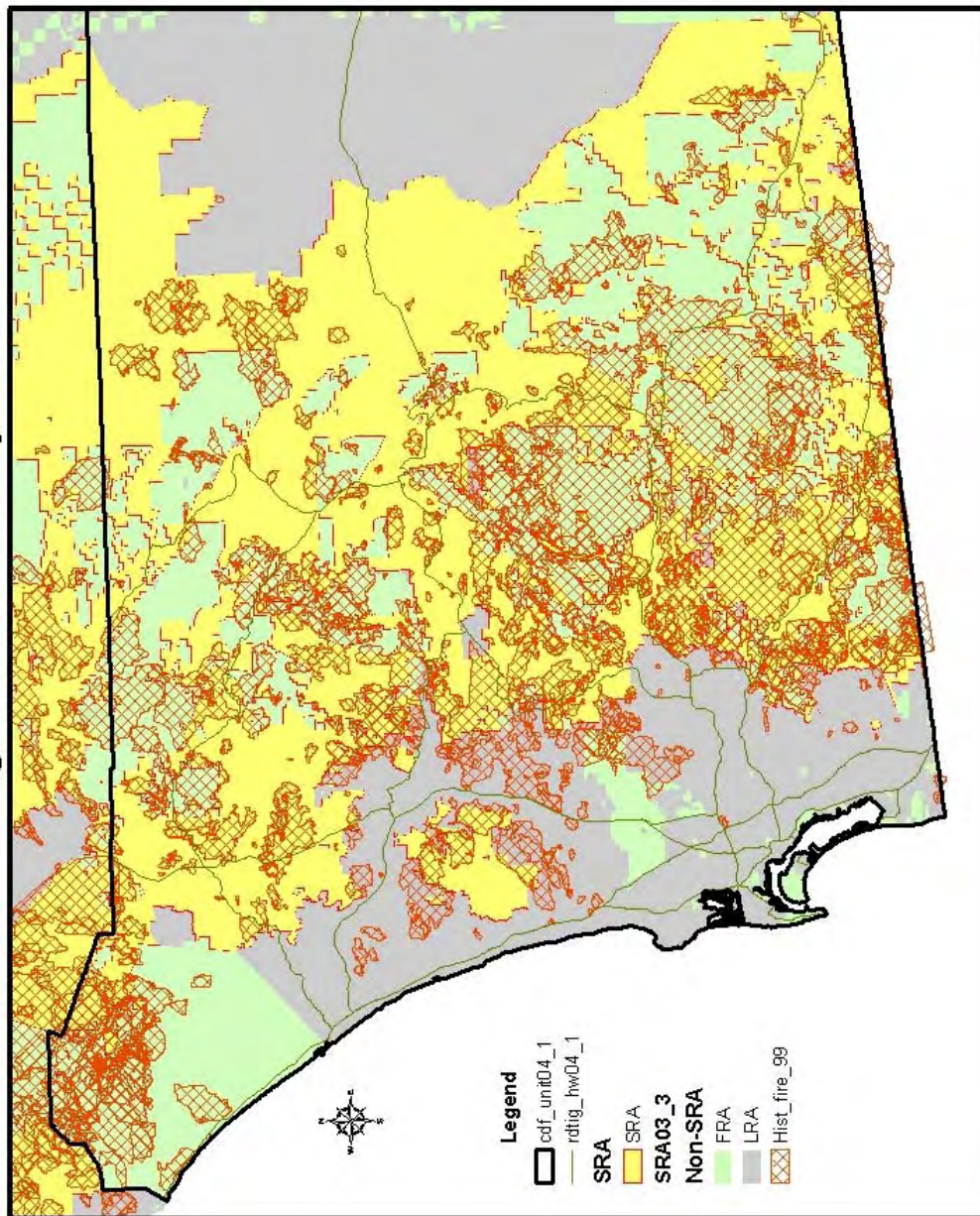


Figure 5 CDF San Diego Fire History 2000 - 2004

# CDF San Diego Fire History 2000-2004

