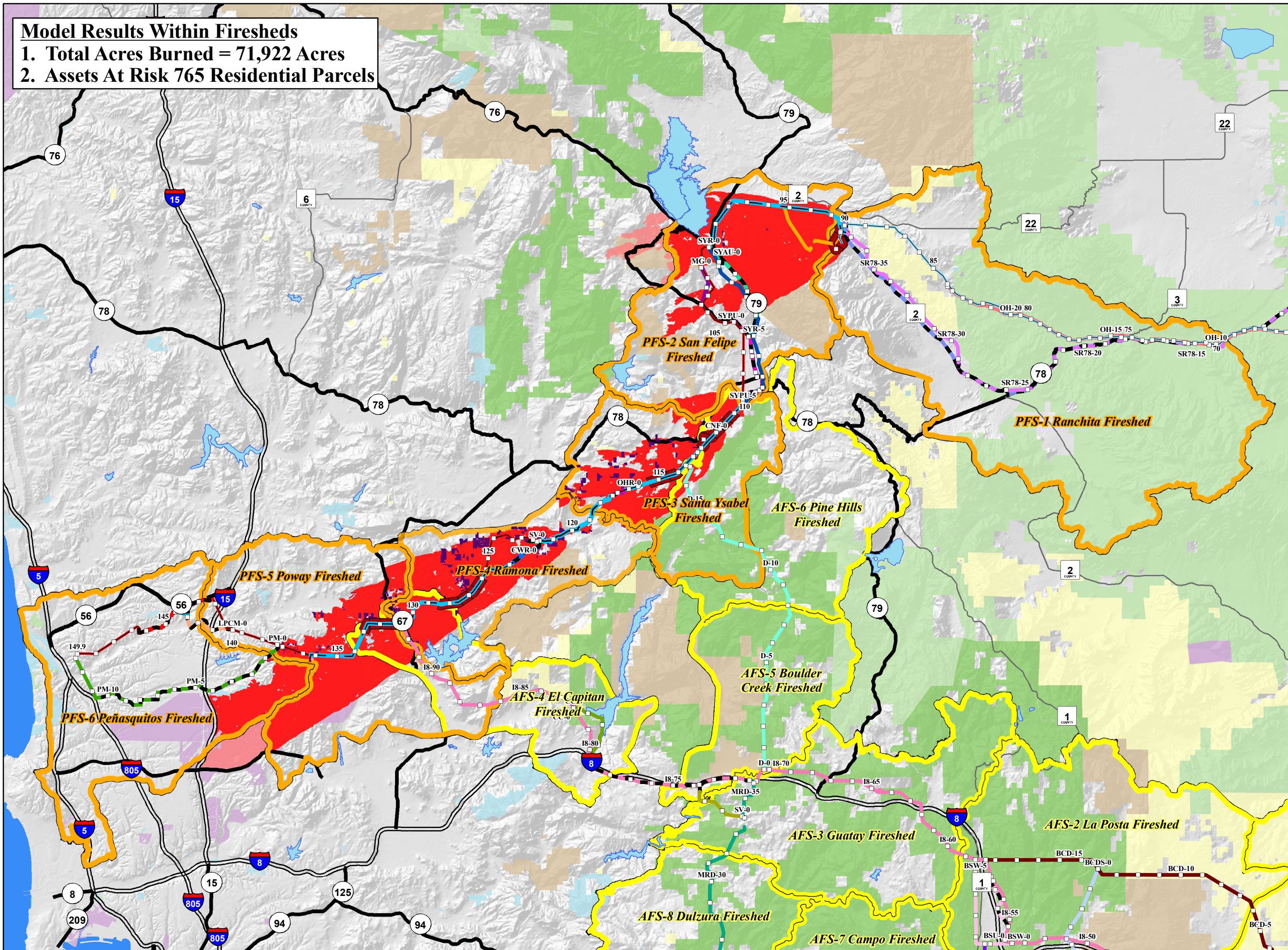


Model Results Within Firesheds
1. Total Acres Burned = 71,922 Acres
2. Assets At Risk 765 Residential Parcels



Proposed Project and Alternative Routes

- Environmentally Superior Northern Route, Overhead Portion
- Proposed Project Overhead 500kV
- Proposed Project Overhead 230kV
- Proposed Project Underground 230kV
- Modified Route D Alternative
- Star Valley Option, Overhead Portion
- Star Valley Option, Underground Portion
- Oak Hollow Road Alternative, Overhead Portion
- Overhead 500 kV ABDSP within Existing ROW
- Partial Underground ABDSP SR78 to S2 Alternative, Overhead Portion
- Partial Underground ABDSP SR78 to S2 Alternative, Underground Portion
- All Underground Option, Overhead Portion
- All Underground Option, Underground Portion
- Pomerado Road to Miramar Area North Alternative, Overhead Portion
- Pomerado Road to Miramar Area North Alternative, Underground Portion
- Route D Alternative
- San Vicente Road Transition Alternative, Overhead Portion
- San Vicente Road Transition Alternative, Underground Portion
- Santa Ysabel Existing ROW Alternative
- Santa Ysabel Partial Underground Alternative, Overhead Portion
- Santa Ysabel Partial Underground Alternative, Underground Portion
- Santa Ysabel SR79 All Underground Alternative, Overhead Portion
- Santa Ysabel SR79 All Underground Alternative, Underground Portion
- Top of the World Substation Alternative
- Black Mountain to Park Village Road Underground Alternative
- Central South Substation Alternative
- CNF Existing 69 kV Route Alternative
- Buckman Springs Underground Option
- Campo North Option
- Chocolate Canyon Option
- Interstate 8 Alternative, Overhead Portion
- South Buckman Springs Option
- Interstate 8 Alternative, Underground Portion
- West Buckman Springs Option
- SDG&E Mesa Grande Alternative
- Milepost
- Road
- Interstate

Jurisdictional Land Ownership

- U.S. Forest Service Land
- Bureau of Land Management Land
- Department of Defense Land
- State Land
- State Park
- Tribal Land

Legend

- Proposed Project Firesheds
- Alternative Routes Firesheds
- Wildfire Containment Conflict Model - Minimum 1.5 mile Segments
- Residential Assets at Risk
- Extreme Fire Weather - Fire Behavior Trend Modeled within Firesheds
- Extreme Fire Weather - Estimated Fire Perimeter - Limited Fuel Model Data

Aspen Environmental Group

Forester's Co-Op
 Professional Forestry & GIS Services
 (530) 273-8326
 www.foreco-op.com

0 16,000 32,000 Feet
 0 4 8 Miles

Sunrise Powerlink Project
Figure Ap.3E-8
Final Environmentally Superior Northern Route, Overhead Portion
Fire Behavior Trend Model
4 Burn Periods - Extreme Weather