

Comment Set G0014, cont.  
California Botanical Habitat

G0014-24

## Appendices (part 1)

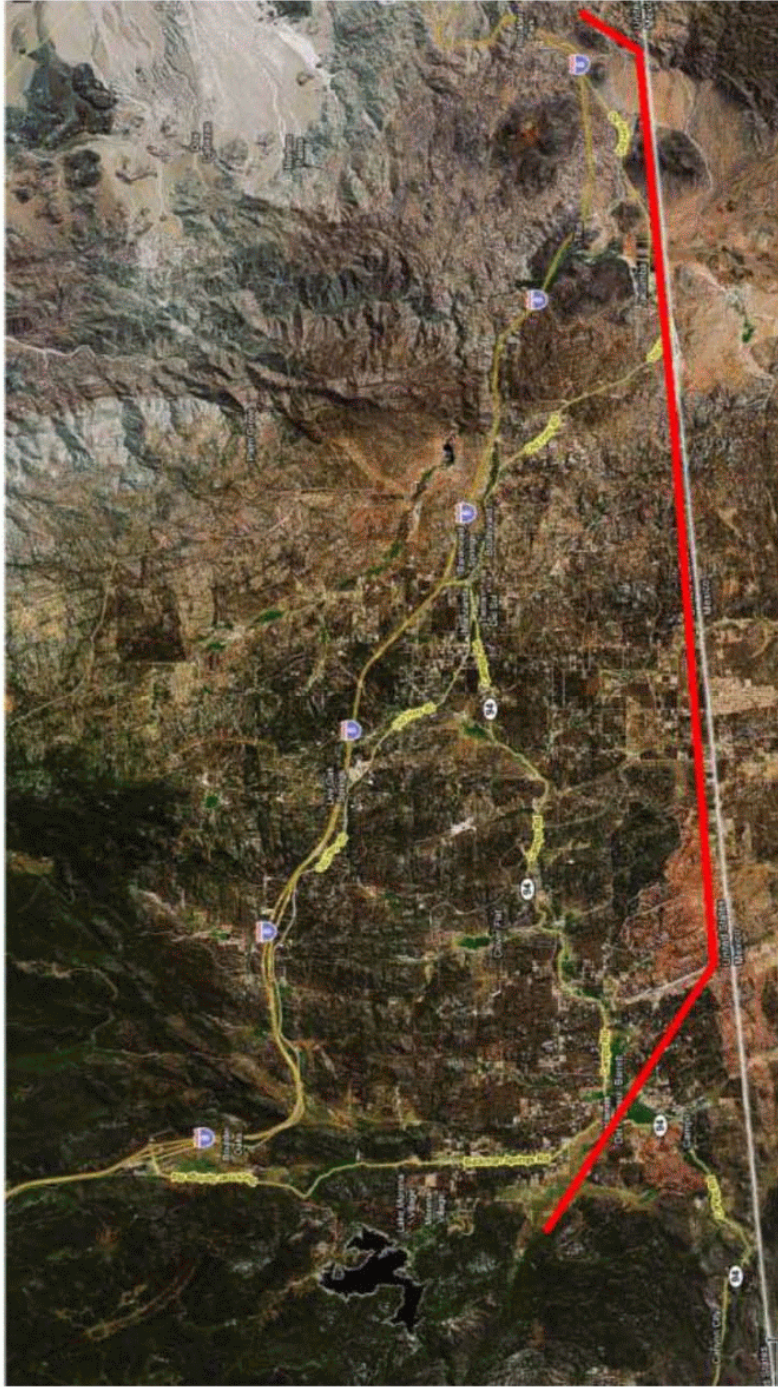
1. Appendix A, Underground AC Power Line Segment for Southeastern San Diego County (22 miles), pages 23-24.
2. Low Cost Underground DC Power Line County Highway Route, 114 miles from El Centro's Imperial Valley Substation (IVS) to San Diego's Sycamore Canyon Substation (SCS), pages 25-26.
3. **Lower Cost Direct Underground DC Power Line, 101 miles from El Centro's Imperial Valley Substation (IVS) to San Diego's Sycamore Canyon Substation (SCS), pages 27-28**.
4. Appendix B, C.B.H. Site Survey Photographs, page 29-44.
5. Appendix C, SDG&E's Past and Continuing Environmental and Property Damage Photographs, pages 45-60.
6. Appendix D, **High power lines and fire ignition through: wind, smoke and grounding problems, pages 61-64**.
7. Appendix E, SDG&E Access Agreement, pages 65-66.

Part 2, pages 67-119

**For additional information:** [www.undergroundpower.us](http://www.undergroundpower.us)

Comment Set G0014, cont.  
California Botanical Habitat

**Appendix A, Underground AC power line segment for Southeast San Diego County**



**From east of the San Diego County line connecting to Route D west of Campo (22 miles).**

G0014-24 cont.





Comment Set G0014, cont.  
California Botanical Habitat

Fully underground 114 mile DC route, El Centro to San Diego north

## Underground DC power line, 114 miles from El Centro's Imperial Valley Substation to San Diego's Sycamore Canyon Substation

G0014-24 cont.

Directions from West to East, avoiding Freeways and Interstate 8, using only county roads, based on low EMF highway travel (less than 2 milligauss, mG):

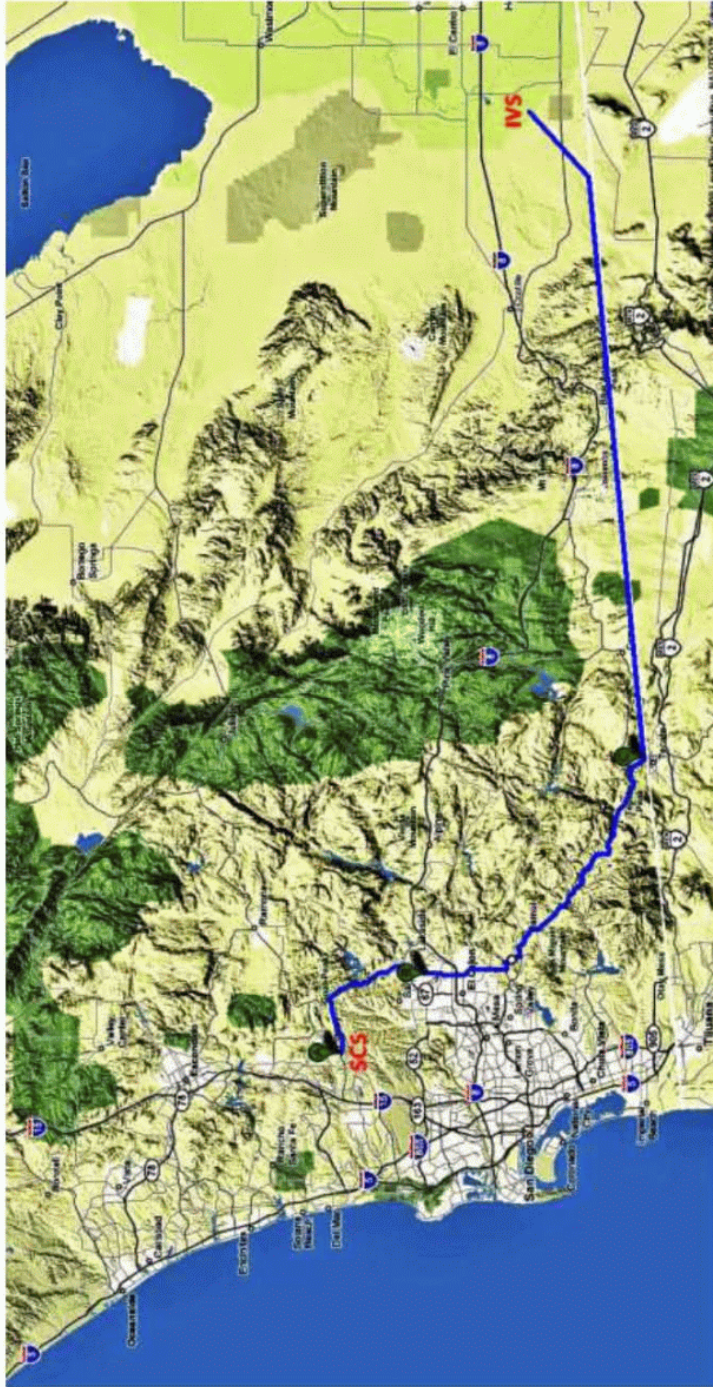
1. Starting at the San Diego Sycamore Canyon Substation, head northeast to
2. Scripps Poway Parkway, then east to
3. Highway 67 south, then to
4. Highway 54 south, then to
5. Highway 94 southeast, through Campo then into Imperial County east of Interstate 8, to
6. Highway 98 (Yuha Cutoff) east, through Coyote Wells, toward El Centro, then
7. Diagonal at a 45 degree angle across desert on existing unpaved road, north of river bed, (which is not illustrated) directly to the Imperial Valley Substation, which is east of El Centro.

### Security Note:

Since the rural areas east of San Diego do not have high-speed internet service, clearly the trench could carry fiber optic cables to monitor the performance, moisture and temperature of the DC power line, as well as provide an internet backbone for the region (installed in PVC conduit), which would also serve as an early monitoring system with video surveillance for the security of the power line which would be available for public viewing, monitoring of fires, crime and the environment.

Comment Set G0014, cont.  
California Botanical Habitat

**Minimal Impact Underground DC Alternative, lower in cost than overhead AC power lines. Underground DC route for the full 101 miles from Imperial to San Diego County:**



**From Imperial Valley Substation IVS to Sycamore Canyon Substation SCS along county roads avoiding Freeways and Interstate 8, from El Centro to San Diego with DC to AC converter stations and AC extensions at each end.**

G0014-24 cont.

Comment Set G0014, cont.  
California Botanical Habitat

Fully underground 101 mile DC route, El Centro to San Diego north

## Underground DC power line, 101 miles from El Centro's Imperial Valley Substation (IVS) to San Diego's Sycamore Canyon Substation (SCS)

G0014-24 cont.

### The lowest impact and lowest cost southern route reviewed:

Directions from West to East, avoiding Freeways and Interstate 8, using only county roads, based on low EMF highway travel (less than 2 milligauss, mG):

1. Starting at the San Diego Sycamore Canyon Substation, head northeast to
2. Scripps Poway Parkway, then east to
3. Highway 67 south, then to
4. Highway 54 south, then to
5. Highway 94 southeast, to
6. Highway 188 south to the border north of Tecate, (46 miles to this point)
7. Then east along unpaved power line roads and right-of-ways, continuing past Jacumba into Imperial County
8. Diagonal at a 45 degree angle across the desert on existing unpaved road (north of river bed) directly to the Imperial Valley Substation, which is west of El Centro, for an additional 55 miles, totaling 101 miles underground.

### **Security Note:**

Since the rural areas east of San Diego do not have high-speed internet service, clearly the trench could carry fiber optic cables to monitor the performance, moisture and temperature of the DC power line, as well as provide an internet backbone for the region (installed in PVC conduit), which would also serve as an early monitoring system with video surveillance for the security of the power line which would be available for public viewing, monitoring of fires, crime and the environment.

Comment Set G0014, cont.  
California Botanical Habitat

## Appendix B, Site Survey Photographs

### Areas to be destroyed on the Southern Route

G0014-24 cont.

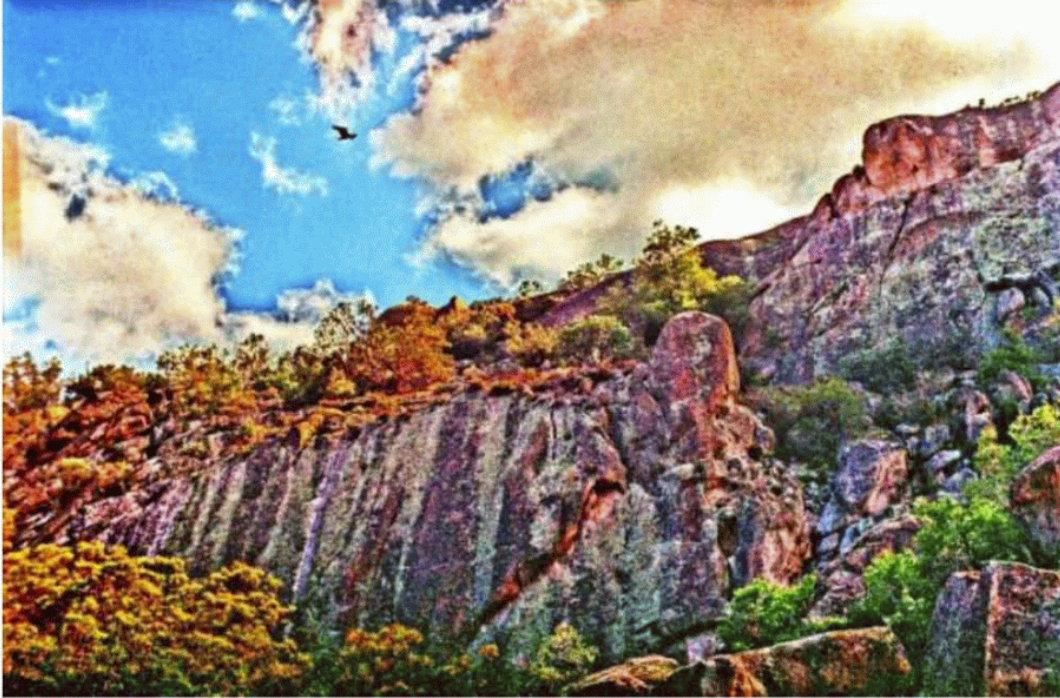


*Bankhead Springs Monument above Interstate 18 and McCain Valley (BLM)*





Comment Set G0014, cont.  
California Botanical Habitat

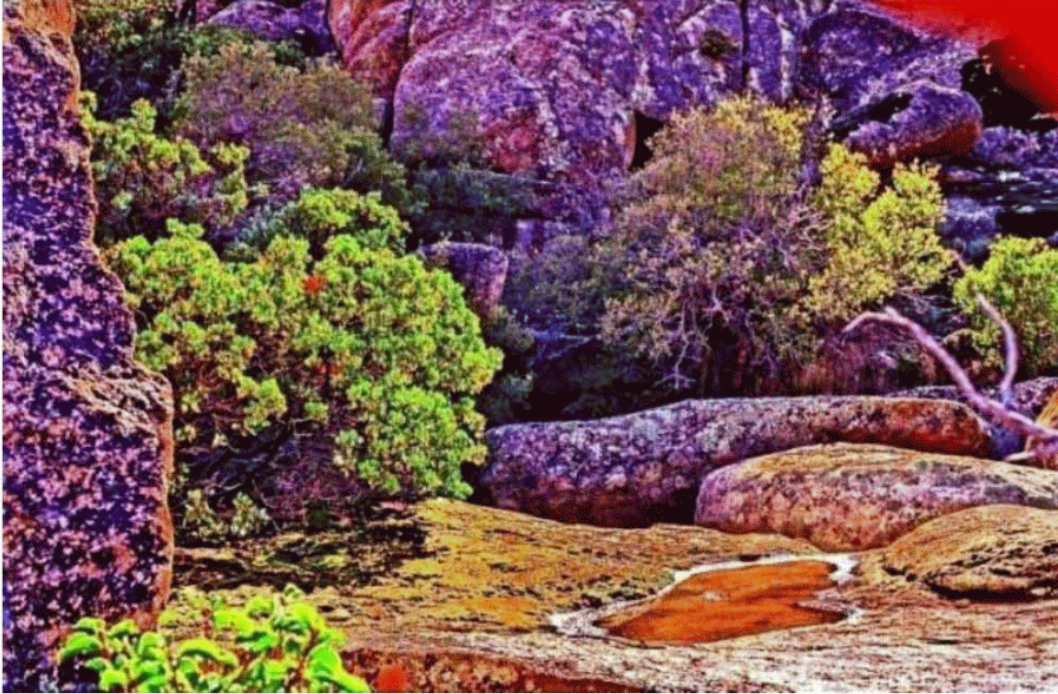


G0014-24 cont.

*Bird above cliff garden, Bankhead Springs California, 2/21/93*

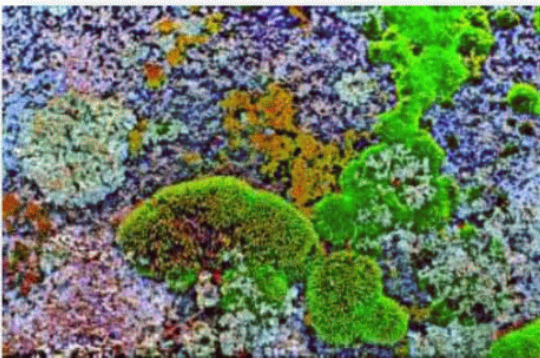


Comment Set G0014, cont.  
California Botanical Habitat



*Water in rock garden, Bankhead Springs California*

G0014-24 cont.



Comment Set G0014, cont.  
California Botanical Habitat



*Acorn grinding rock*



G0014-24 cont.

Comment Set G0014, cont.  
California Botanical Habitat



*Western view of Anthropological Reserve, Interstate 8 and McCain Valley, February 21, 1993*



G0014-24 cont.

Comment Set G0014, cont.  
California Botanical Habitat



*Manzanita tree and flat granite*

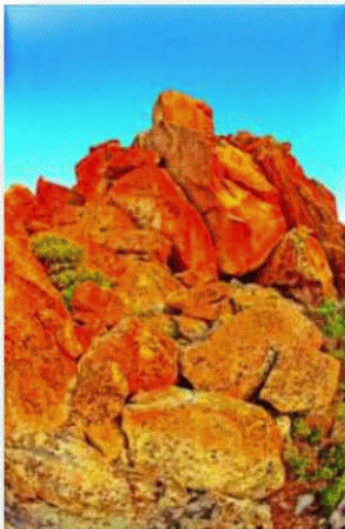


G0014-24 cont.

Comment Set G0014, cont.  
California Botanical Habitat



*Southern stone monument and cave*

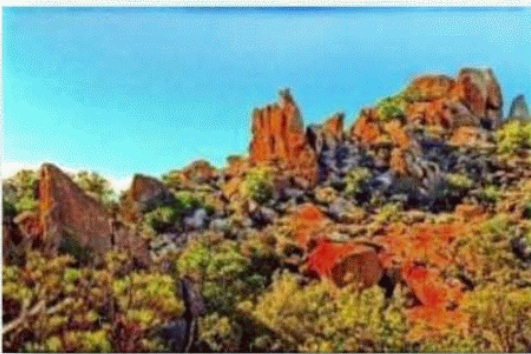


G0014-24 cont.

Comment Set G0014, cont.  
California Botanical Habitat



*Northeast ridgeline view of adjacent Anza Borrego Desert State Park in the background*

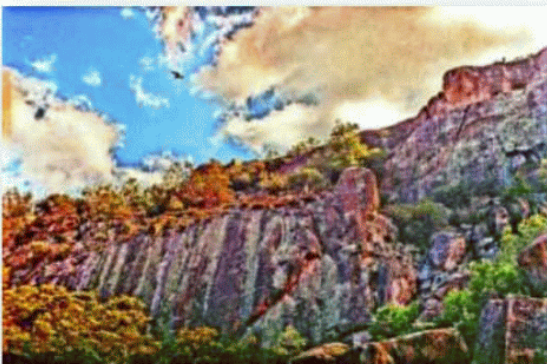


G0014-24 cont.

Comment Set G0014, cont.  
California Botanical Habitat



*Northern rock head at sunset*



G0014-24 cont.



Comment Set G0014, cont.  
California Botanical Habitat



*Looking north into Anza Borrego Desert State Park in the background*



G0014-24 cont.

Comment Set G0014, cont.  
California Botanical Habitat



G0014-24 cont.

*Evening beyond the northwest valley, above the McCain Valley extending to distant mountains in the background, all targeted for the destructive impacts of 500,000 volt high-power lines on almost seven hundred 170 foot tall pylons, with hundreds of roads and clearings leading to the huge pylons. The damages to this pristine wilderness could never be restored.*



Comment Set G0014, cont.  
California Botanical Habitat

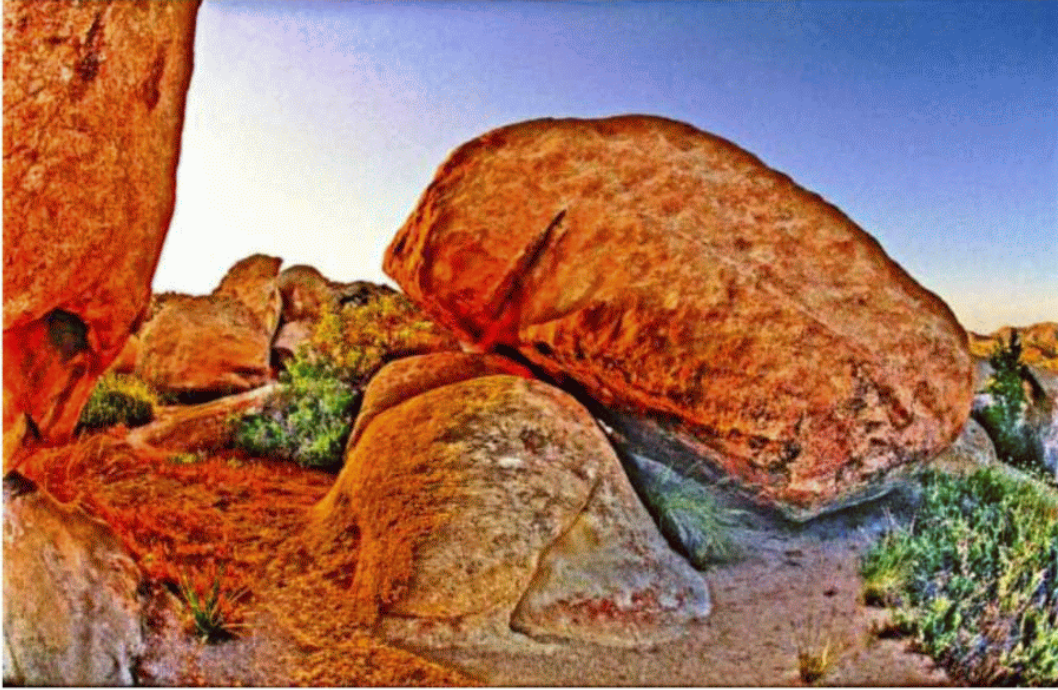


G0014-24 cont.

*Mountain top cavity with ABDSP to the left*



Comment Set G0014, cont.  
California Botanical Habitat



*Leaning rock at sunset*

G0014-24 cont.



Comment Set G0014, cont.  
California Botanical Habitat



*Light entering rock at sunset, 50mm lens on 35mm Kodacolor 100, Nikon V scan*

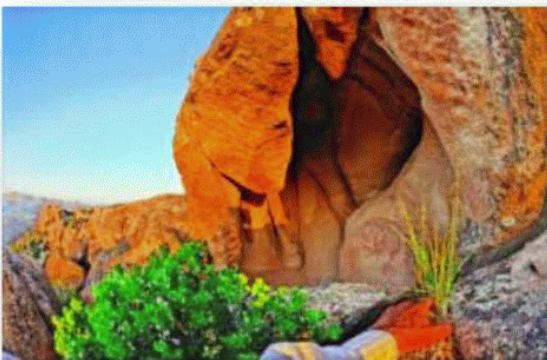


G0014-24 cont.

Comment Set G0014, cont.  
California Botanical Habitat



*Mountain top garden after sunset, looking west toward Boulevard California, 180 degree diagonal*

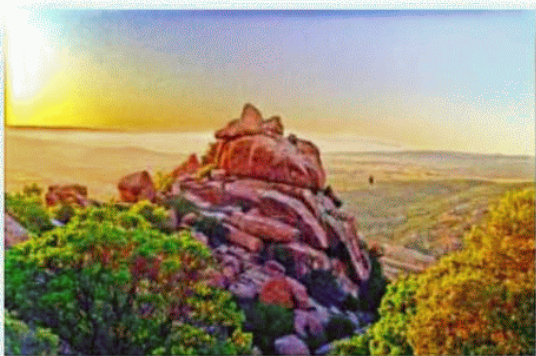


G0014-24 cont.

Comment Set G0014, cont.  
California Botanical Habitat



*Western point illuminated at sunset, above the McCain Valley in the background*



G0014-24 cont.

Comment Set G0014, cont.  
California Botanical Habitat

## Appendix C, Prior SDG&E Environmental and Property Damage Photographs

G0014-24 cont.

**Environmental Damages caused by SDG&E remain as permanent scars on thousands of acres of San Diego County's wilderness regions, created by bulldozing roads, turnarounds, pylons and work areas, all of which are exasperated by years of rain water runoff, which carved permanent ravines into the earth along hundreds of high-power line access roads, which remain substantially unmaintained, without restoration of habitat in spite of repeated requests from local residents, who have had their homes and landscape degraded and permanently damaged. The following photographs were obtained from CPUC letters which were, without any exception we could locate, overwhelmingly in opposition to the Sunrise Powerlink, and in some cases based on their prior experience as a result of serious environmental damages to their own land and that of their neighbors. The following excerpts document some of their observations.**

I am writing to you to express my opposition to the proposed Sunrise Powerlink Project as a whole... I do not believe SDG&E will properly maintain these poles (pylons) and roads since they have not done so to the poles and roads that already exist on my property, my neighbors, and the surrounding areas. Please look at the enclosed photos as proof. We have contacted Keith Richards, from SDG&E, many times in an attempt to get them to properly maintain these roads and poles with no proven success while he writes, "These areas outside our access road are the responsibility of property owners. However, SDG&E is responsible for its access roads and the management of water that flows across, along, and under them." How will they possibly maintain new ones in more remote areas? Would you allow your property to be destroyed by SDG&E like the photos show? I am



Comment Set G0014, cont.  
California Botanical Habitat

requesting that an Environmental Impact Study and Report be done specifically addressing my concerns if this area is chosen as a route.

My property value has already been negatively impacted because of the possibility of these larger power lines coming through my property. By law I will now have to disclose anything associated with power lines that will affect my property. Will I and everyone else affected by these power lines be guaranteed unbiased appraisals and compensation for new and expanding ROW or purchase of properties? Property values will not only dramatically decrease for homeowners that SDG&E will be dealing with, but also anyone that has a view of these lines. The varied terrain allows for people to see these power poles (160 foot tall pylons) for miles. Increased cost or cancellation of homeowner's insurance is a huge financial burden. Will SDG&E compensate us for these costs year after year?! Would you want to lose \$200,000 - \$300,000 (on house values) right now because SDG&E could be allowed to do this? If you are going to allow SDG&E to do this Proposed Project then I would want other visible alternatives looked at and researched as well.

Use of the Non-Wire alternatives in the proposed project including the options that already exist make more sense. Reliable wind and solar options that are currently being used successfully elsewhere and the use of the existing Encina and South Bay power plants could address San Diego's need for more power. It would allow San Diego to act responsibly toward getting power that is environmentally friendly as opposed to allowing Sempra Energy to continue to rely on and produce dirty power in Mexico where there are few regulations. Pollution from power plants in Mexico can drift back into California, Arizona, and beyond. Would you allow your family to breath this toxic air? ...None of us could come in and do the same thing. Please do the right thing and say NO to the Sunrise Powerlink.

G0014-24 cont.