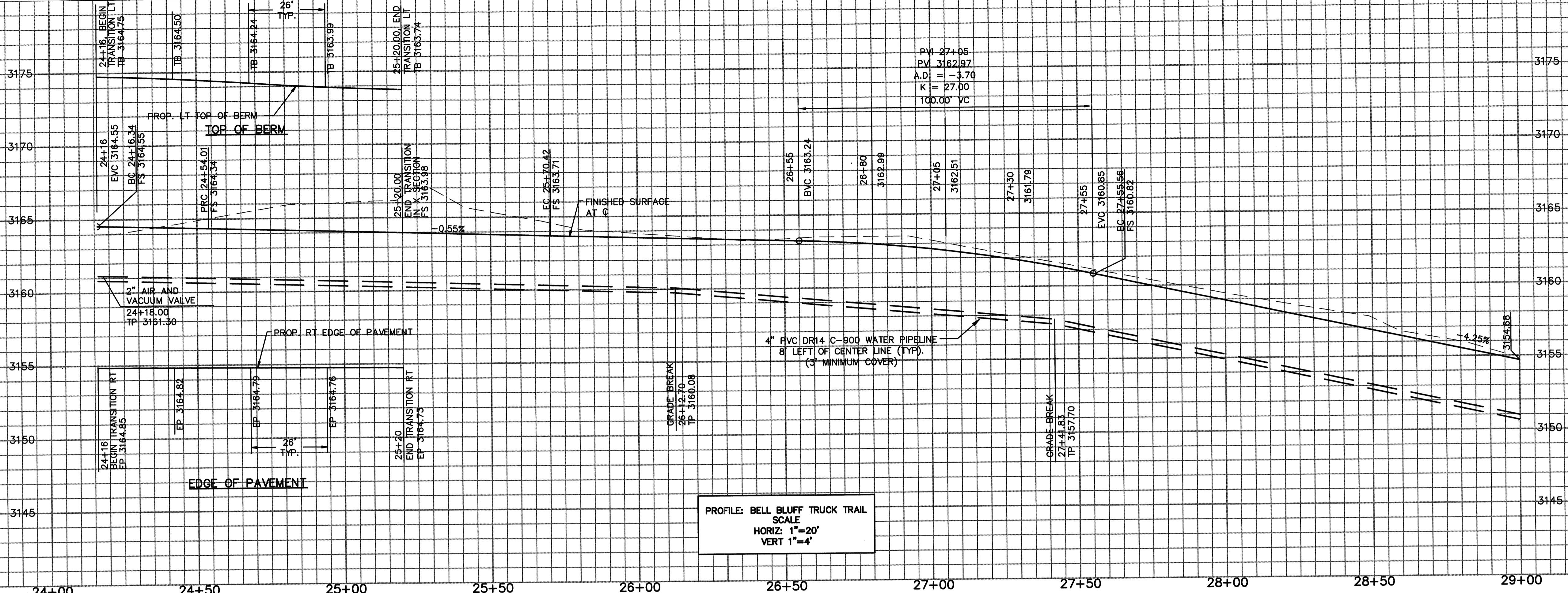
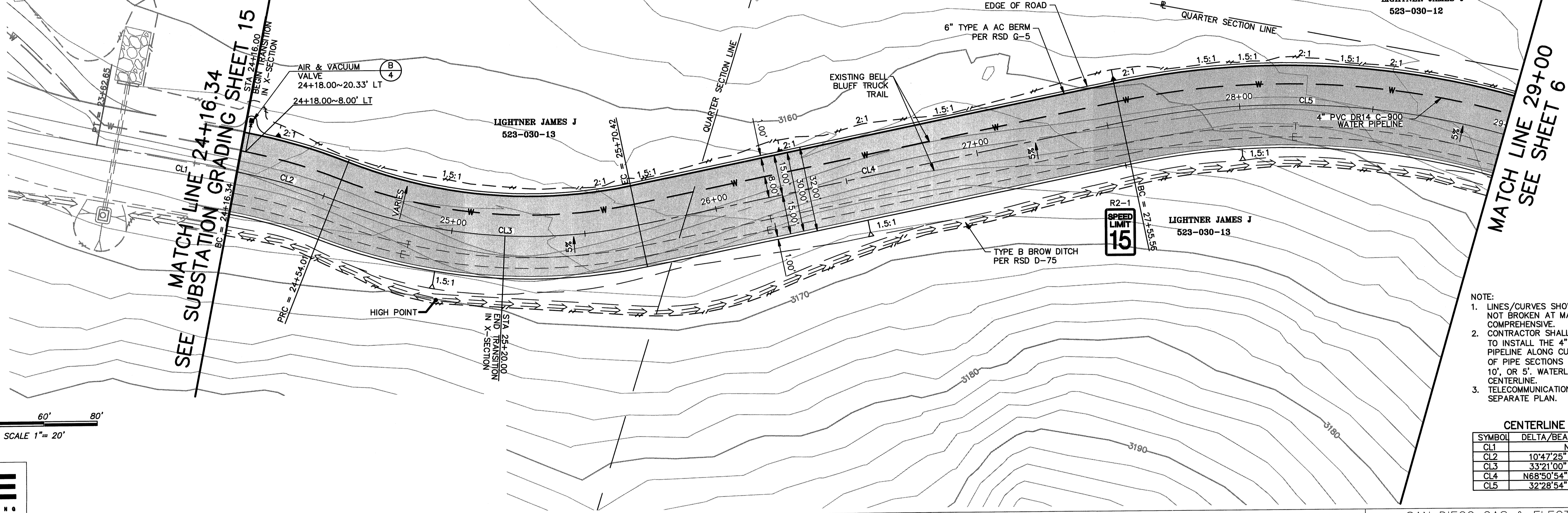


SEE SUBSTATION GRADING SHEET 25



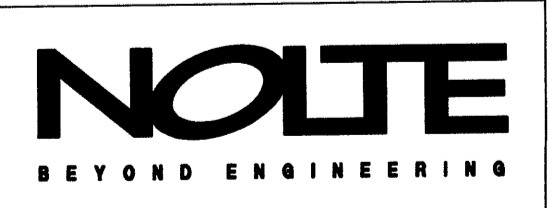
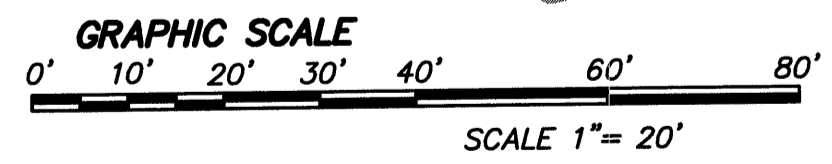
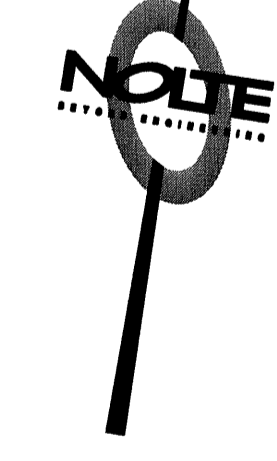
FOR CONTINUATION OF ACCESS ROAD TO THE SUBSTATION SEE SD&E SUNCREST SUBSTATION GRADING PLAN SCR-C-015



- NOTE:
1. LINES/CURVES SHOWN ON THE DATA TABLE ARE NOT BROKEN AT MATCH LINES. LENGTHS ARE COMPREHENSIVE.
 2. CONTRACTOR SHALL USE DEFLECTION COUPLINGS TO INSTALL THE 4" PVC DR14 C-900 WATER PIPELINE ALONG CURVES. ALLOWABLE LENGTHS OF PIPE SECTIONS THROUGH CURVES ARE 20', 10', OR 5'. WATERLINE IS 8.0 FEET LEFT OF CENTERLINE.
 3. TELECOMMUNICATION AND ELECTRICAL LINE PER SEPARATE PLAN.

CENTERLINE DATA TABLE

SYMBOL	DELTA/BEARING	RADIUS	LENGTH
CL1	NOT USED		
CL2	10°47'25"	200.00'	37.67'
CL3	33°21'00"	200.00'	116.41'
CL4	N68°50'54"E	...	185.14'
CL5	32°28'54"	300.00'	170.07'



REVISIONS

NO.	WORK DONE	DATE:	BY:	APP'D:	NO.	WORK DONE	DATE:	BY:	APP'D:	NO.	WORK DONE	DATE:	BY:	APP'D:	NO.	WORK DONE	DATE:	BY:	APP'D:	NO.	

SAN DIEGO GAS & ELECTRIC COMPANY
SAN DIEGO, CALIFORNIA

SUNCREST SUBSTATION ACCESS ROAD
PLAN & PROFILE

DRAWN BY: DHT DATE: 3/24/10 SCALE: 1"=20' W.O.: - REV.: 0
 CHECKED BY: PJC DATE: -
 APPROVED BY: CR DATE: - SHEET 5 OF 55
 CAD NO.: IPPVT05 PLOT SCALE: 1=1

SCR-C-205

N:\SD030600\CADD\USFS\CIVIL\IP-PVT\IPPVT05