

HF 3131.37
 HP 44+23.18
 PVI 45+05
 PVI 3131.82
 A.D. = -5.50
 K = 56.56
 200.00' VC

PROFILE: BELL BLUFF TRUCK TRAIL
 SCALE
 HORIZ: 1"=20'
 VERT 1"=4'

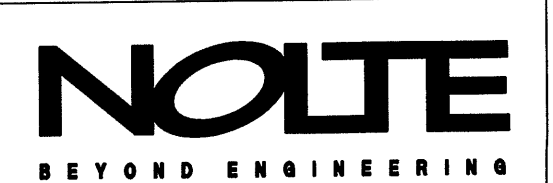
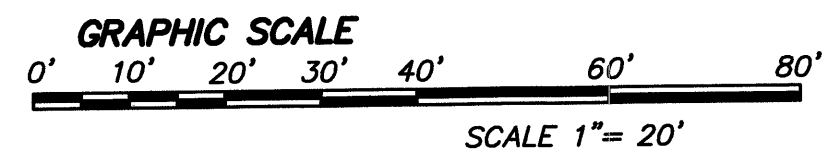
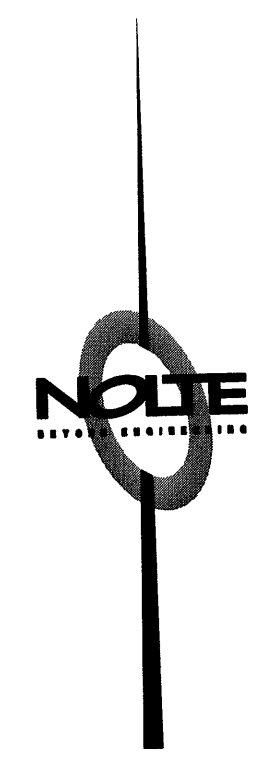
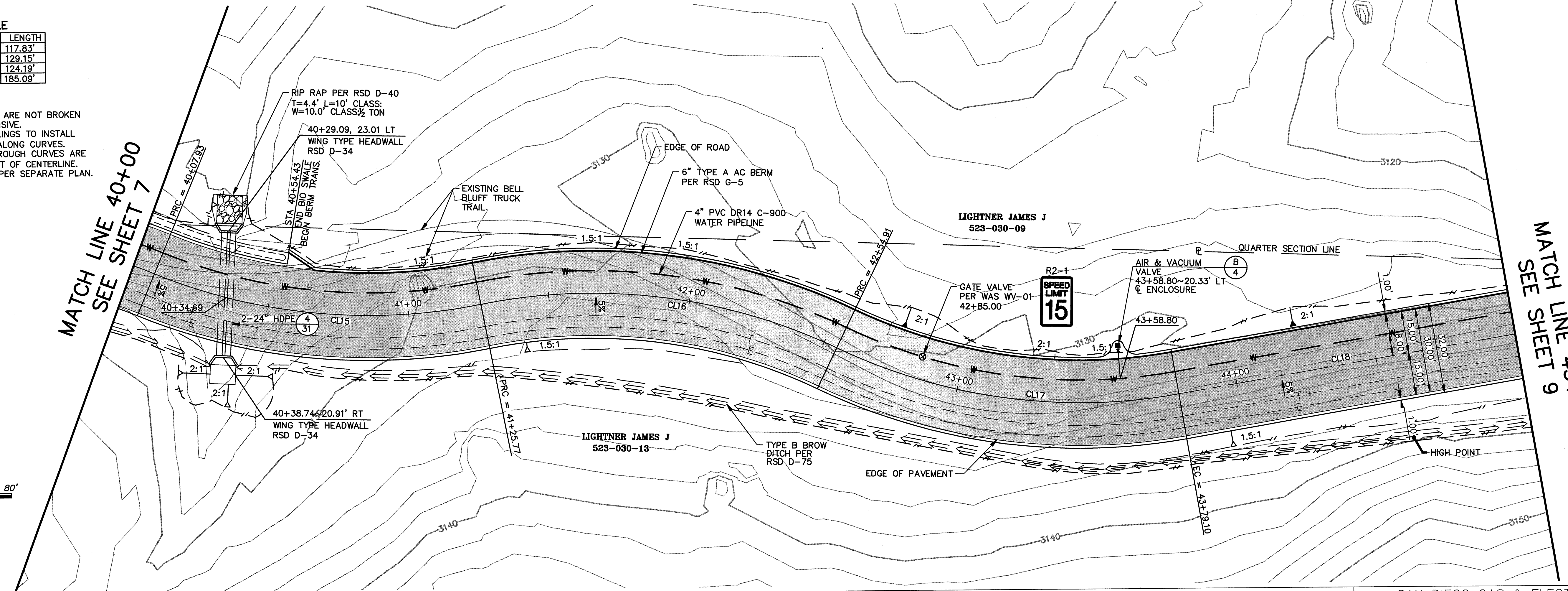
CENTERLINE DATA TABLE

SYMBOL	DELTA/BEARING	RADIUS	LENGTH
CL15	33°45'26"	200.00'	117.83'
CL16	36°59'53"	200.00'	129.15'
CL17	35°34'36"	200.00'	124.19'
CL18	N79°27'45"E	...	185.09'

- NOTE:**
1. LINES/CURVES SHOWN ON THE DATA TABLE ARE NOT BROKEN AT MATCH LINES. LENGTHS ARE COMPREHENSIVE.
 2. CONTRACTOR SHALL USE DEFLECTION COUPLINGS TO INSTALL THE 4" PVC DR14 C-900 WATER PIPELINE ALONG CURVES. ALLOWABLE LENGTHS OF PIPE SECTIONS THROUGH CURVES ARE 20', 10', OR 5'. WATERLINE IS 8.0 FEET LEFT OF CENTERLINE.
 3. TELECOMMUNICATION AND ELECTRICAL LINE PER SEPARATE PLAN.

MATCH LINE 40+00
 SEE SHEET 7

MATCH LINE 45+00
 SEE SHEET 9



REVISIONS

NO.	WORK DONE	DATE:	BY:	APP'D:	NO.	WORK DONE	DATE:	BY:	APP'D:	NO.	WORK DONE	DATE:	BY:	APP'D:	NO.

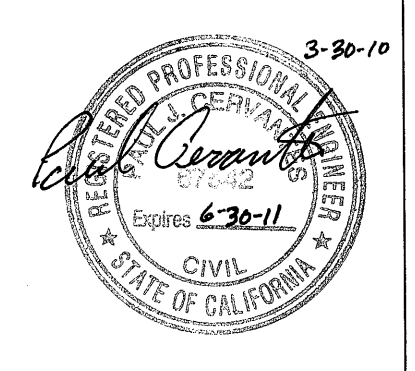
SAN DIEGO GAS & ELECTRIC COMPANY
 SAN DIEGO, CALIFORNIA

SUNCREST SUBSTATION ACCESS ROAD

PLAN & PROFILE

DRAWN BY: DHT DATE: 3/24/10 SCALE: 1"=20' W.O.: - REV: 0
 CHECKED BY: PJC DATE: -
 APPROVED BY: CR DATE: - SHEET 8 OF 55
 CAD NO.: IPPV108 PLOT SCALE: 1=1

SCR-C-208



N:\SD8039600_CADD_USFS\CIVIL\IP-PVT\IPV108.dwg