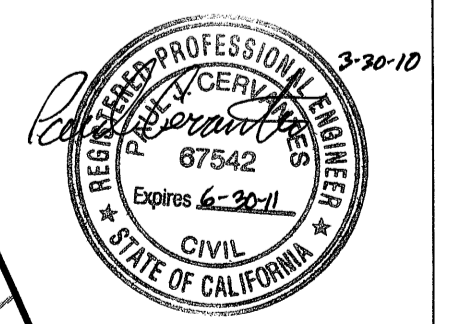
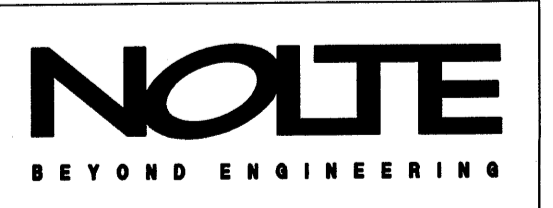
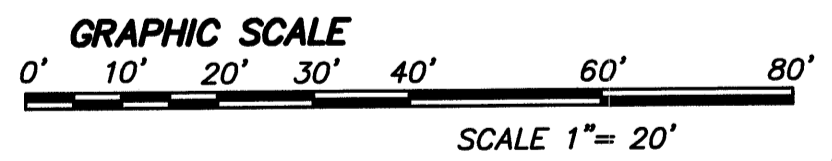
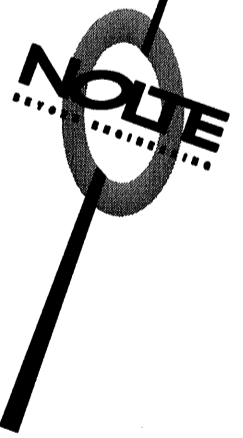
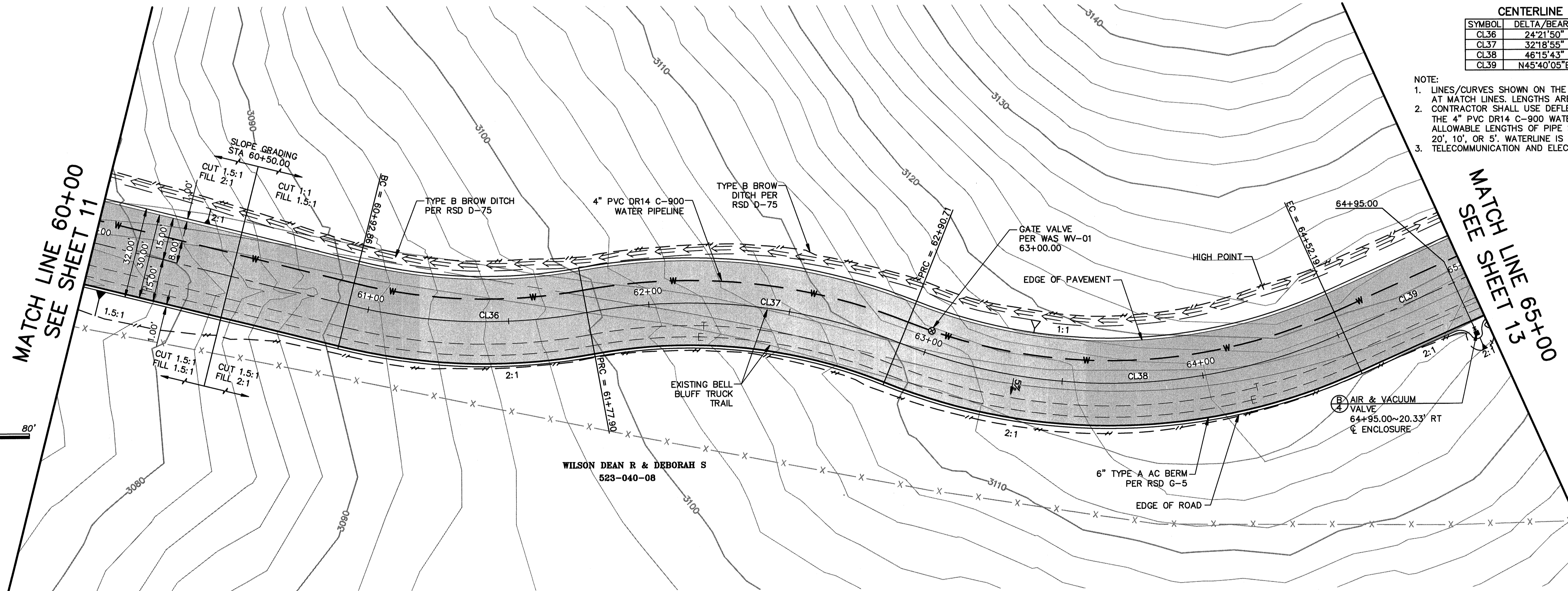


HP 3117.02
 HP 64+48
 PVI 64+48
 FVI 3127.02
 A.D. = -20.00
 K = 20.00
 +00.00 VC

CENTERLINE DATA TABLE

SYMBOL	DELTA/BEARING	RADIUS	LENGTH
CL36	24°21'50"	200.00'	85.05'
CL37	32°18'55"	200.00'	112.80'
CL38	46°15'43"	200.00'	161.48'
CL39	N45°40'05"E	...	84.15'

- NOTE:
1. LINES/CURVES SHOWN ON THE DATA TABLE ARE NOT BROKEN AT MATCH LINES. LENGTHS ARE COMPREHENSIVE.
 2. CONTRACTOR SHALL USE DEFLECTION COUPLINGS TO INSTALL THE 4" PVC DR14 C-900 WATER PIPELINE ALONG CURVES. ALLOWABLE LENGTHS OF PIPE SECTIONS THROUGH CURVES ARE 20', 10', OR 5'. WATERLINE IS 8.0 FEET LEFT OF CENTERLINE.
 3. TELECOMMUNICATION AND ELECTRICAL LINE PER SEPARATE PLAN.



REVISIONS

NO.	WORK DONE	DATE:	BY:	APP'D:	NO.	WORK DONE	DATE:	BY:	APP'D:	NO.	WORK DONE	DATE:	BY:	APP'D:	NO.

SAN DIEGO GAS & ELECTRIC COMPANY
 SAN DIEGO, CALIFORNIA

SUNCREST SUBSTATION ACCESS ROAD
 PLAN & PROFILE

DRAWN BY: DHT DATE: 3/24/10 SCALE: 1"=20' W.O.: - REV: 0
 CHECKED BY: PJC DATE: -
 APPROVED BY: CR DATE: - SHEET 12 OF 55
 CAD NO.: IPPVT12 PLOT SCALE: 1=1

SCR-C-212

U:\SDB\039600\CADD\USFS\CIVIL\IP-PVT\IPPVT12