

CENTERLINE DATA TABLE

SYMBOL	DELTA/BEARING	RADIUS	LENGTH
CL44	N66°24'14"E	...	95.37'
CL45	S13°48'06"W	200.00'	55.16'
CL46	S78°42'19"W	200.00'	274.73'
CL47	N50°41'33"W	...	69.12'

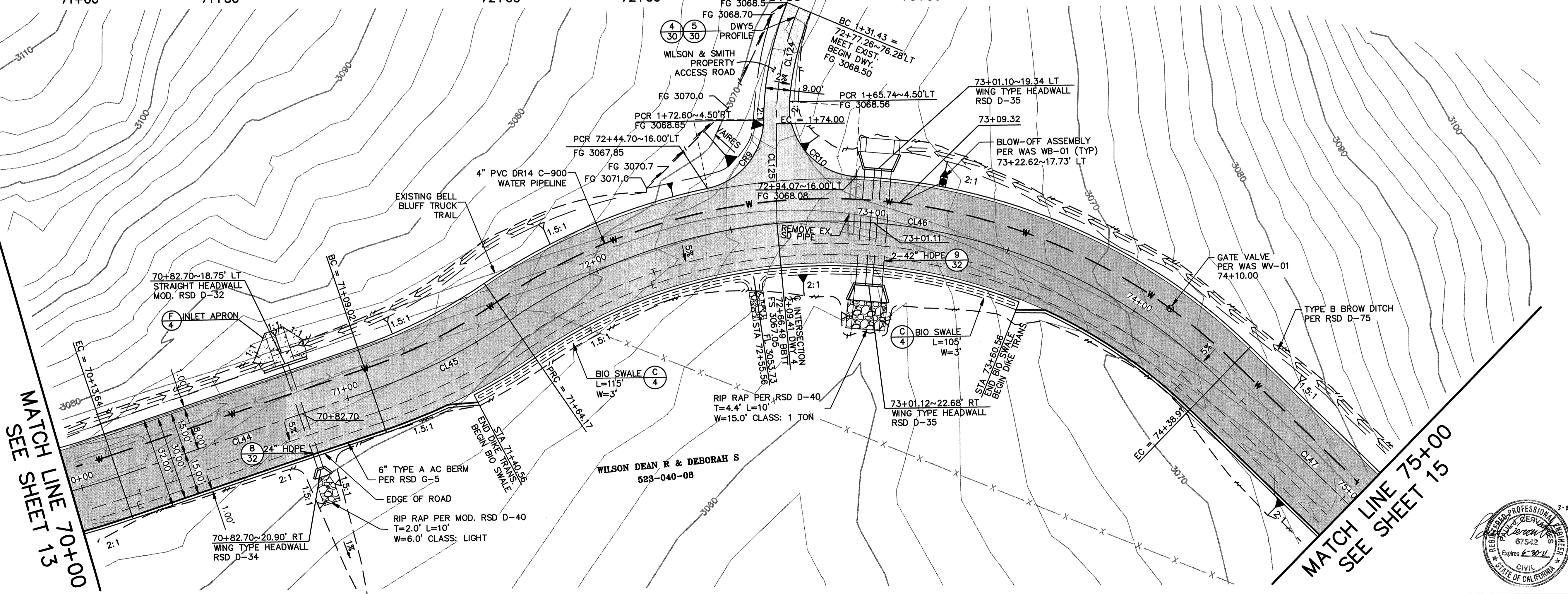
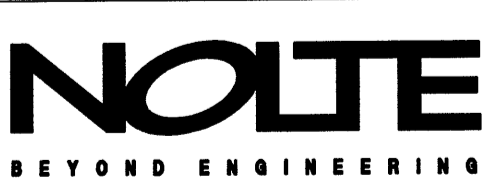
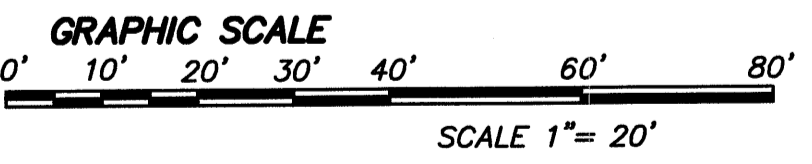
- NOTE:**
1. LINES/CURVES SHOWN ON THE DATA TABLE ARE NOT BROKEN AT MATCH LINES. LENGTHS ARE COMPREHENSIVE.
 2. CONTRACTOR SHALL USE DEFLECTION COUPLINGS TO INSTALL THE 4" PVC DR14 C-900 WATER PIPELINE ALONG CURVES. ALLOWABLE LENGTHS OF PIPE SECTIONS THROUGH CURVES ARE 20', 10', OR 5'. WATERLINE IS 8.0 FEET LEFT OF CENTERLINE.
 3. TELECOMMUNICATION AND ELECTRICAL LINE PER SEPARATE PLAN.

DRIVEWAY CENTERLINE DATA TABLE

SYMBOL	DELTA/BEARING	RADIUS	LENGTH
CL124	S22°44'30"W	107.26'	42.57'
CL125	S05°12'10"E	...	35.41'

CURB RETURN DATA TABLE

SYMBOL	DELTA/BEARING	RADIUS	LENGTH
CR9	S78°07'28"W	25.00'	34.09'
CR10	S91°23'20"W	25.00'	39.88'



REVISIONS

NO.	WORK DONE	DATE:	BY:	APP'D:	NO.	WORK DONE	DATE:	BY:	APP'D:	NO.	WORK DONE	DATE:	BY:	APP'D:	NO.	WORK DONE	DATE:	BY:	APP'D:	NO.	

SAN DIEGO GAS & ELECTRIC COMPANY
 SAN DIEGO, CALIFORNIA

SUNCREST SUBSTATION ACCESS ROAD
 PLAN & PROFILE

DRAWN BY: DHT	DATE: 3/24/10	SCALE: 1"=20'	W.O.:	REV: 0
CHECKED BY: PJC	DATE: -			
APPROVED BY: CR	DATE: -	SHEET 14 OF 55		
CAD NO.: IPPVT14	PLOT SCALE: 1=1			

SCR-C-214

