

PROFILE: BELL BLUFF TRUCK TRAIL
SCALE
HORIZ: 1"=20'
VERT: 1"=4'

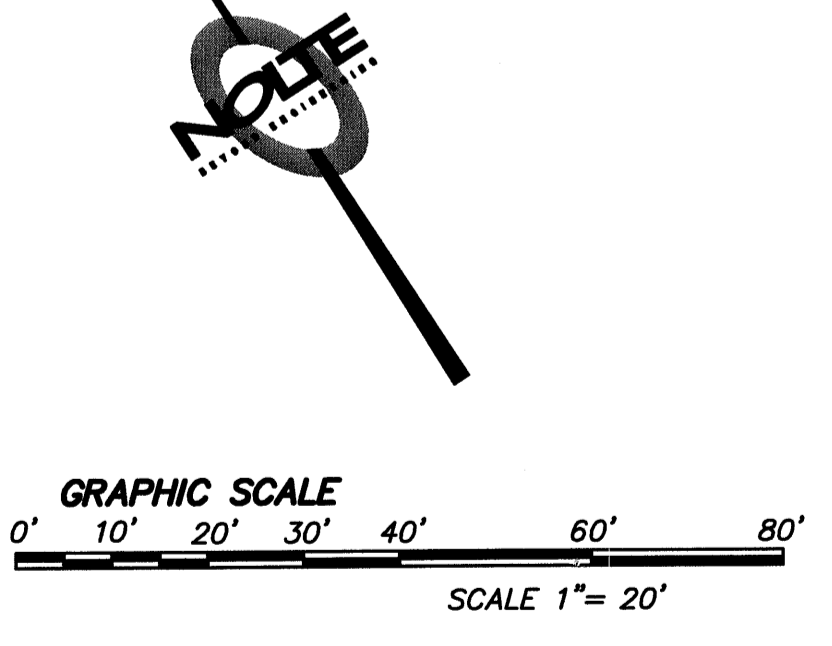
CENTERLINE DATA TABLE

SYMBOL	DELTA/BEARING	RADIUS	LENGTH
	64°09'40"	475.00'	531.92'

- NOTE:
1. LINES/CURVES SHOWN ON THE DATA TABLE ARE NOT BROKEN AT MATCH LINES. LENGTHS ARE COMPREHENSIVE.
 2. CONTRACTOR SHALL USE DEFLECTION COUPLINGS TO INSTALL THE 4" PVC DR14 C-900 WATER PIPELINE ALONG CURVES. ALLOWABLE LENGTHS OF PIPE SECTIONS THROUGH CURVES ARE 20', 10', OR 5'. WATERLINE IS 8.0 FEET LEFT OF CENTERLINE.
 3. TELECOMMUNICATION AND ELECTRICAL LINE PER SEPARATE PLAN.
 4. USE 10 FEET TO TRANSITION THE LEFT AND RIGHT EDGE OF DRIVEWAY TO MEET EXISTING GROUND. THE CROSS SLOPE IN THIS TRANSITION WILL VARY.

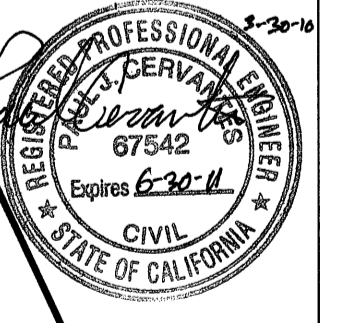
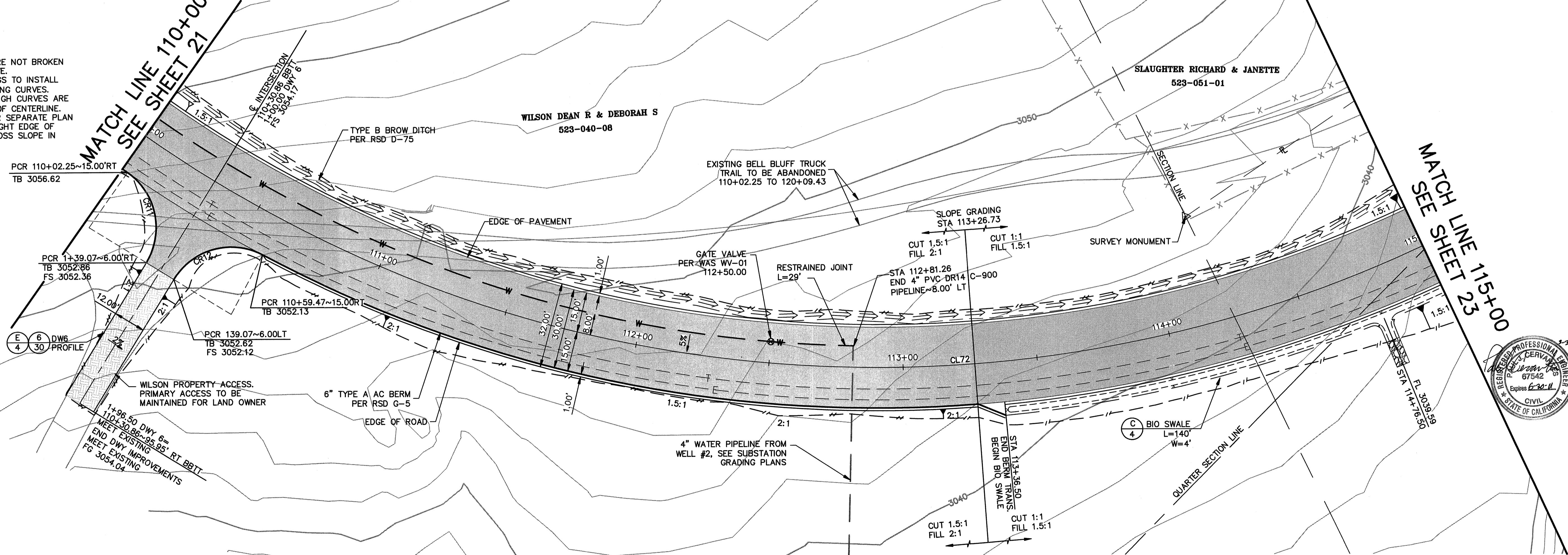
CURB RETURN DATA TABLE

SYMBOL	DELTA/BEARING	RADIUS	LENGTH
CR11	86°32'56"	25.00'	37.76'
CR12	86°32'56"	25.00'	37.76'



MATCH LINE 110+00
SEE SHEET 21

MATCH LINE 115+00
SEE SHEET 23



REVISIONS

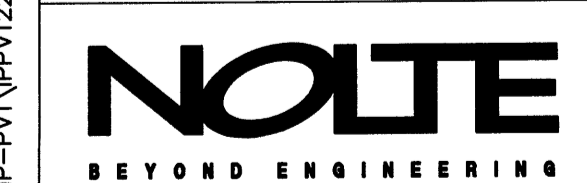
NO.	WORK DONE	DATE	BY	APP'D.	NO.	WORK DONE	DATE	BY	APP'D.	NO.	WORK DONE	DATE	BY	APP'D.	NO.

SAN DIEGO GAS & ELECTRIC COMPANY
SAN DIEGO, CALIFORNIA

SUNCREST SUBSTATION ACCESS ROAD
PLAN & PROFILE

DRAWN BY: DHT	DATE: 3/24/10	SCALE: 1"=20'	W.O.:	REV: 0
CHECKED BY: PJC	DATE: -			
APPROVED BY: CR	DATE: -	SHEET 22 OF 55		
CAD NO.: IPPV122	PLOT SCALE: 1=1			

SCR-C-222



N:\SD8039600\CADD\USFS\CIVIL\IP-PVT\IPV122