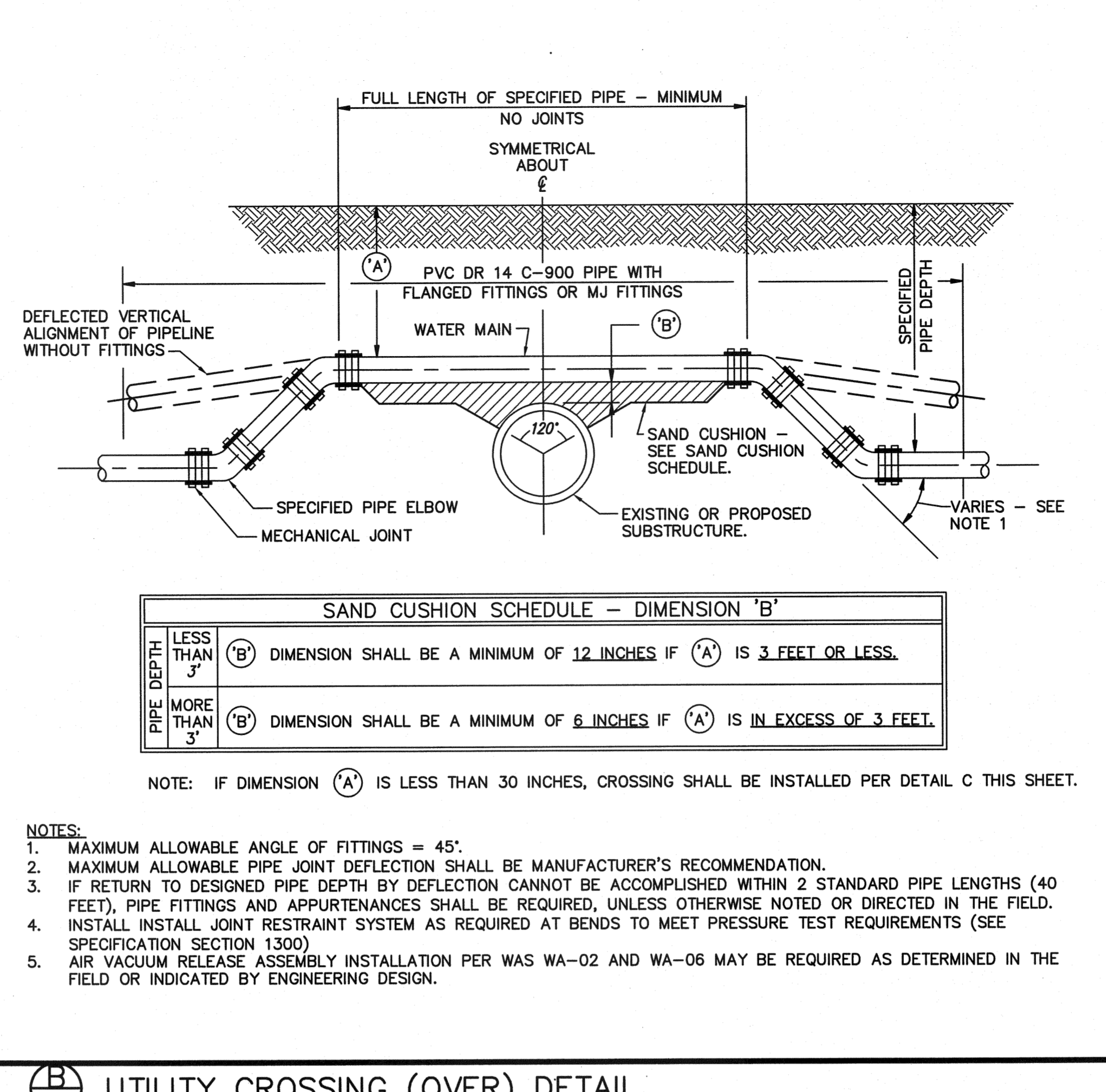


- NOTES:
- ALL PIPE SHALL BE THREADED GALV. STEEL UNLESS NOTED OTHERWISE.
 - THIS DETAIL IS BASED ON UNVERIFIED DESCRIPTIONS OF THE EXISTING WELL EQUIPMENT AND PERFORMANCE CHARACTERISTICS. ACTUAL EXISTING WELL CONFIGURATIONS AND PERFORMANCE HAVE NOT BEEN VERIFIED. THE CONTRACTOR SHALL VERIFY EXISTING WELL CONFIGURATION, PERFORM WELL TESTING TO DETERMINE A SAFE YIELD, AND DETERMINE A SUITABLE WELL PUMP WITH APPROVAL FROM THE ENGINEER.
 - UNLESS NOTED OTHERWISE BY THE PROJECT GEOTECHNICAL REPORT, ALL REQUIRED BACKFILL SHALL BE COMPACTED TO AT LEAST 95% OF THE MAXIMUM DENSITY OBTAINED BY THE ASTM DESIGNATION D-1557 (LATEST EDITION) METHOD OF COMPACTION.

SECTION A-A

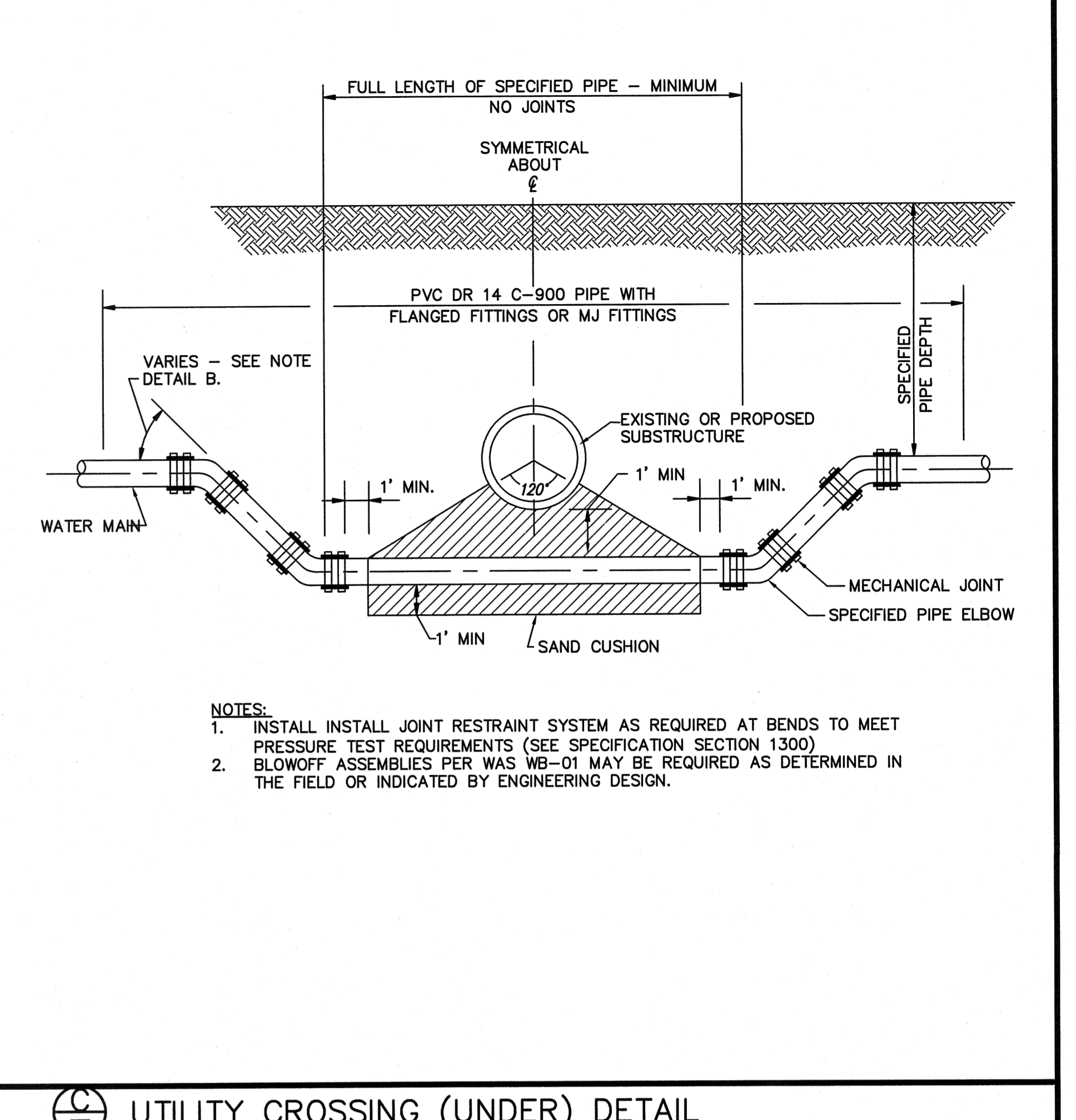


SAND CUSHION SCHEDULE - DIMENSION 'B'

PIPE DEPTH LESS THAN 3'	'B' DIMENSION SHALL BE A MINIMUM OF 12 INCHES IF 'A' IS 3 FEET OR LESS.
MORE THAN 3'	'B' DIMENSION SHALL BE A MINIMUM OF 6 INCHES IF 'A' IS IN EXCESS OF 3 FEET.

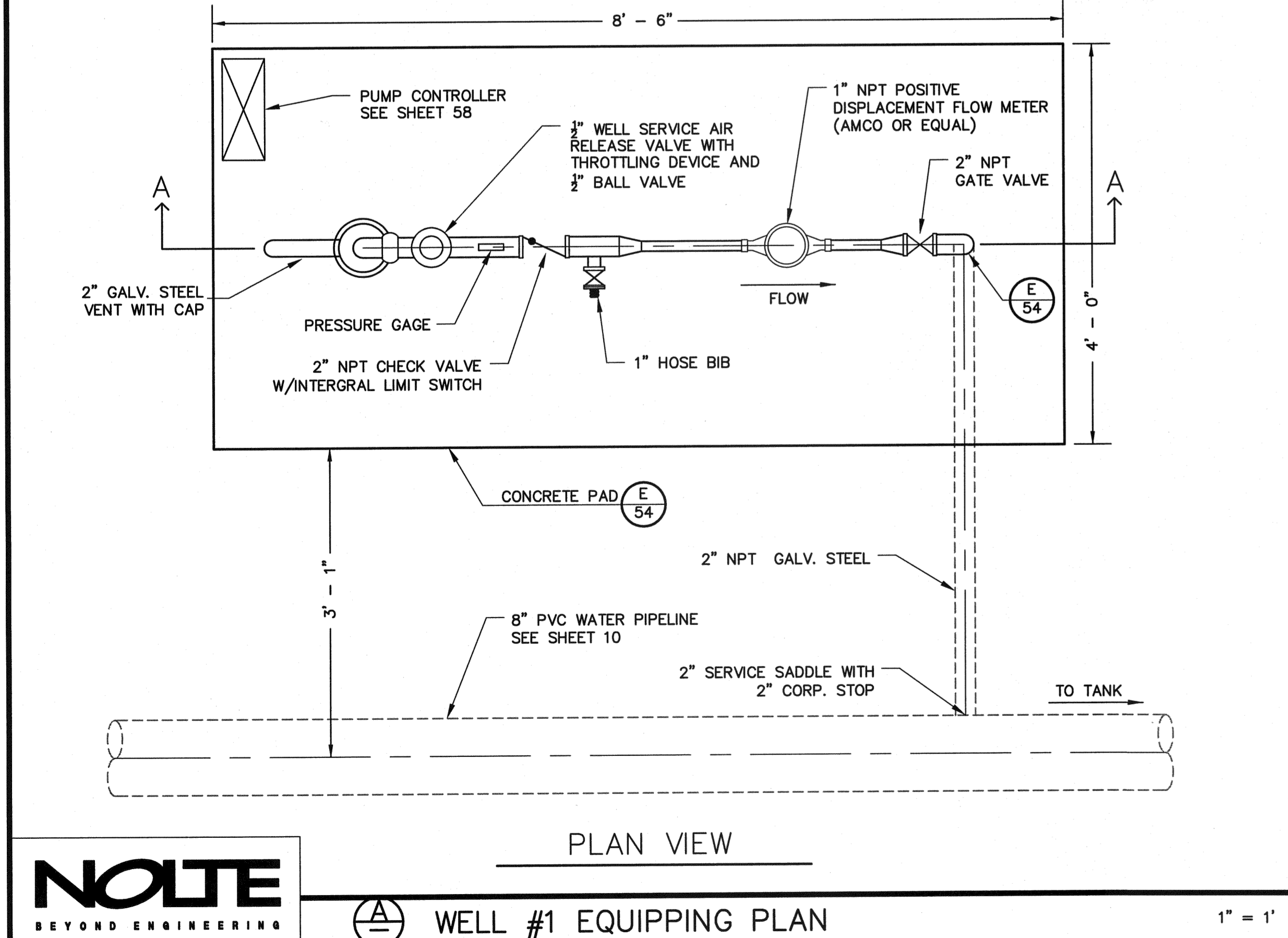
- NOTE: IF DIMENSION (A) IS LESS THAN 30 INCHES, CROSSING SHALL BE INSTALLED PER DETAIL C THIS SHEET.
- NOTES:
- MAXIMUM ALLOWABLE ANGLE OF FITTINGS = 45°.
 - MAXIMUM ALLOWABLE PIPE JOINT DEFLECTION SHALL BE MANUFACTURER'S RECOMMENDATION.
 - IF RETURN TO DESIGNED PIPE DEPTH BY DEFLECTION CANNOT BE ACCOMPLISHED WITHIN 2 STANDARD PIPE LENGTHS (40 FEET), PIPE FITTINGS AND APPURTENANCES SHALL BE REQUIRED, UNLESS OTHERWISE NOTED OR DIRECTED IN THE FIELD.
 - INSTALL JOINT RESTRAINT SYSTEM AS REQUIRED AT BENDS TO MEET PRESSURE TEST REQUIREMENTS (SEE SPECIFICATION SECTION 1300)
 - AIR VACUUM RELEASE ASSEMBLY INSTALLATION PER WAS WA-02 AND WA-06 MAY BE REQUIRED AS DETERMINED IN THE FIELD OR INDICATED BY ENGINEERING DESIGN.

(B) UTILITY CROSSING (OVER) DETAIL



- NOTES:
- INSTALL JOINT RESTRAINT SYSTEM AS REQUIRED AT BENDS TO MEET PRESSURE TEST REQUIREMENTS (SEE SPECIFICATION SECTION 1300)
 - BLOWOFF ASSEMBLIES PER WAS WB-01 MAY BE REQUIRED AS DETERMINED IN THE FIELD OR INDICATED BY ENGINEERING DESIGN.

(C) UTILITY CROSSING (UNDER) DETAIL



PLAN VIEW

(A) WELL #1 EQUIPPING PLAN

1" = 1'

REVISIONS

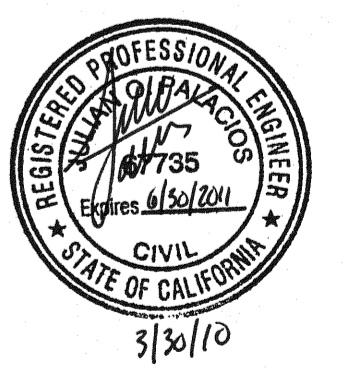
NO.	WORK DONE	DATE:	BY:	APP'D:	NO.	WORK DONE	DATE:	BY:	APP'D:	NO.	WORK DONE	DATE:	BY:	APP'D:	NO.

SAN DIEGO GAS & ELECTRIC COMPANY
SAN DIEGO, CALIFORNIA

SUNCREST SUBSTATION
WATER AND WELL SYSTEM DETAILS

DRAWN BY: APS DATE: 3/24/10 SCALE: 1"=30' W.O.: - REV.: 0
 CHECKED BY: RWM DATE: -
 APPROVED BY: CR DATE: - SHEET 52 OF 66
 CAD NO.: GP52 PLOT SCALE: 1=1

SCR-C-052



N:\SBR039600\CADD\USFS\CIVIL\GP52

