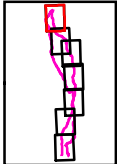




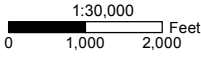
Line 1600 CNDDDB Plants Map 1 of 7

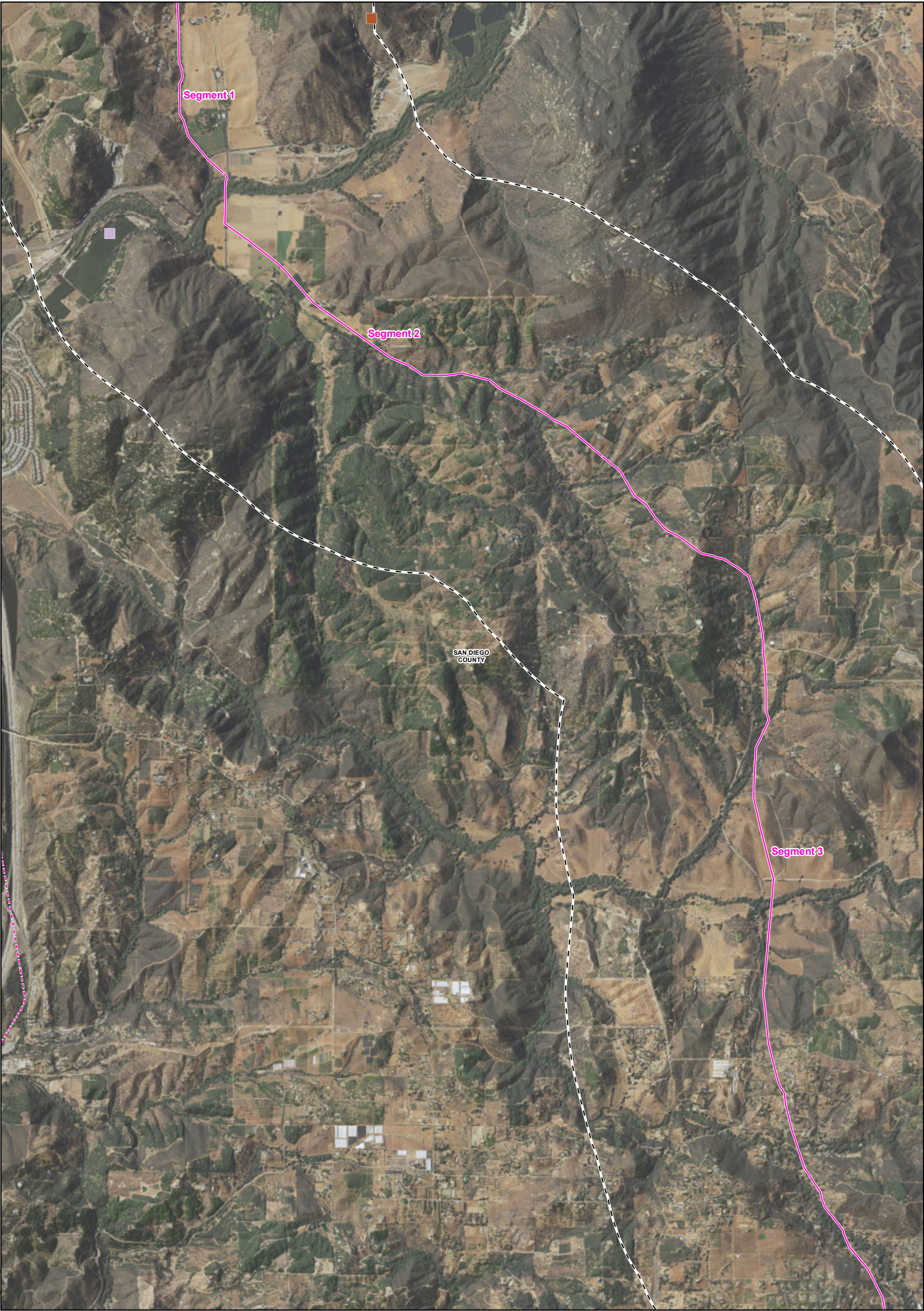
Pipeline Safety & Reliability Project

- Line 1600 Segment
 - Proposed Project Route
 - 1-Mile Project Buffer
 - City/County Boundary
- CNDDDB Plants
- Orcutt's brodiaea
 - Parry's tetracoccus
 - Rainbow manzanita
 - Robinson's pepper-grass
 - chaparral nolina



The California Natural Diversity Database (CNDDDB) contains location records (known as occurrences) of rare and sensitive plant and animal species. An occurrence can represent an individual, population, nest site, den, or stand. This map depicts CNDDDB occurrences for sensitive plants within one mile of the Line 1600 alignment. The dashed line surrounding each occurrence displays the accuracy of the source location (e.g., the bigger the circle, the less accurate the source is). The information shown on this map is preliminary and is intended for evaluating Project alternatives.





Line 1600 CNDDDB Plants Map 2 of 7

Pipeline Safety & Reliability Project

- Line 1600 Segment

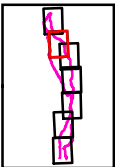
- - - Proposed Project Route

└─ 1-Mile Project Buffer

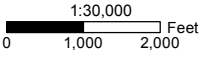
□ City/County Boundary
- CNDDDB Plants

■ Southern Cottonwood Willow Riparian Forest

■ chaparral nolina



The California Natural Diversity Database (CNDDDB) contains location records (known as occurrences) of rare and sensitive plant and animal species. An occurrence can represent an individual, population, nest site, den, or stand. This map depicts CNDDDB occurrences for sensitive plants within one mile of the Line 1600 alignment. The dashed line surrounding each occurrence displays the accuracy of the source location (e.g., the bigger the circle, the less accurate the source is). The information shown on this map is preliminary and is intended for evaluating Project alternatives.





Line 1600 CNDDDB Plants Map 3 of 7

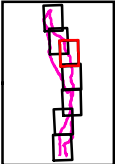
Pipeline Safety & Reliability Project

- Line 1600 Segment

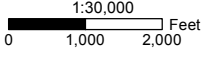
— 1-Mile Project Buffer

City/County Boundary
- CNDDDB Plants

▲ summer holly



The California Natural Diversity Database (CNDDDB) contains location records (known as occurrences) of rare and sensitive plant and animal species. An occurrence can represent an individual, population, nest site, den, or stand. This map depicts CNDDDB occurrences for sensitive plants within one mile of the Line 1600 alignment. The dashed line surrounding each occurrence displays the accuracy of the source location (e.g., the bigger the circle, the less accurate the source is). The information shown on this map is preliminary and is intended for evaluating Project alternatives.



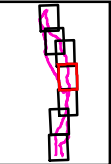
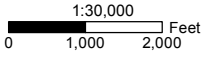


Line 1600 CNDDDB Plants Map 4 of 7

Pipeline Safety & Reliability Project

- Line 1600 Segment
Proposed Project Route
1-Mile Project Buffer
City/County Boundary
- CNDDDB Plants
Orcutt's brodiaea
Ramona horkelia
Robinson's pepper-grass
summer holly

The California Natural Diversity Database (CNDDDB) contains location records (known as occurrences) of rare and sensitive plant and animal species. An occurrence can represent an individual, population, nest site, den, or stand. This map depicts CNDDDB occurrences for sensitive plants within one mile of the Line 1600 alignment. The dashed line surrounding each occurrence displays the accuracy of the source location (e.g., the bigger the circle, the less accurate the source is). The information shown on this map is preliminary and is intended for evaluating Project alternatives.





Line 1600 CNDDDB Plants Map 5 of 7

Pipeline Safety & Reliability Project

- Line 1600 Segment

- - - Proposed Project Route

└─ 1-Mile Project Buffer

□ City/County Boundary

● California adolphia

■ San Diego ambrosia

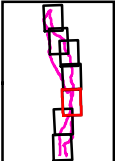
■ Southern Coast Live Oak Riparian Forest

■ Southern Cottonwood Willow Riparian Forest

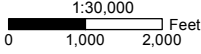
■ Southern Riparian Forest

▲ smooth tarplant

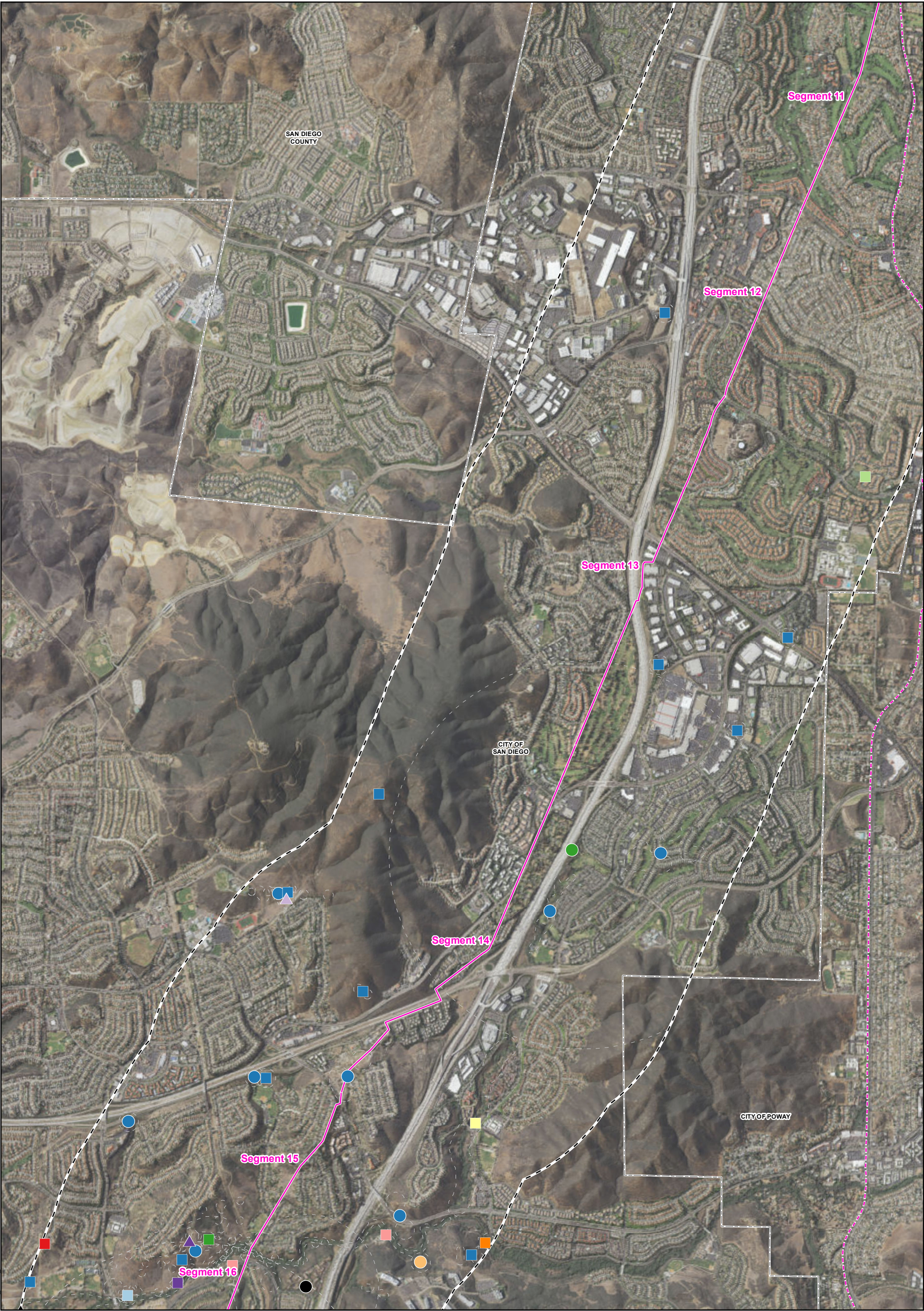
▲ southern tarplant



The California Natural Diversity Database (CNDDDB) contains location records (known as occurrences) of rare and sensitive plant and animal species. An occurrence can represent an individual, population, nest site, den, or stand. This map depicts CNDDDB occurrences for sensitive plants within one mile of the Line 1600 alignment. The dashed line surrounding each occurrence displays the accuracy of the source location (e.g., the bigger the circle, the less accurate the source is). The information shown on this map is preliminary and is intended for evaluating Project alternatives.



MXDs\edfloc\1600_CNDDDB_Plants_v3.mxd 9/28/2016

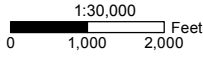


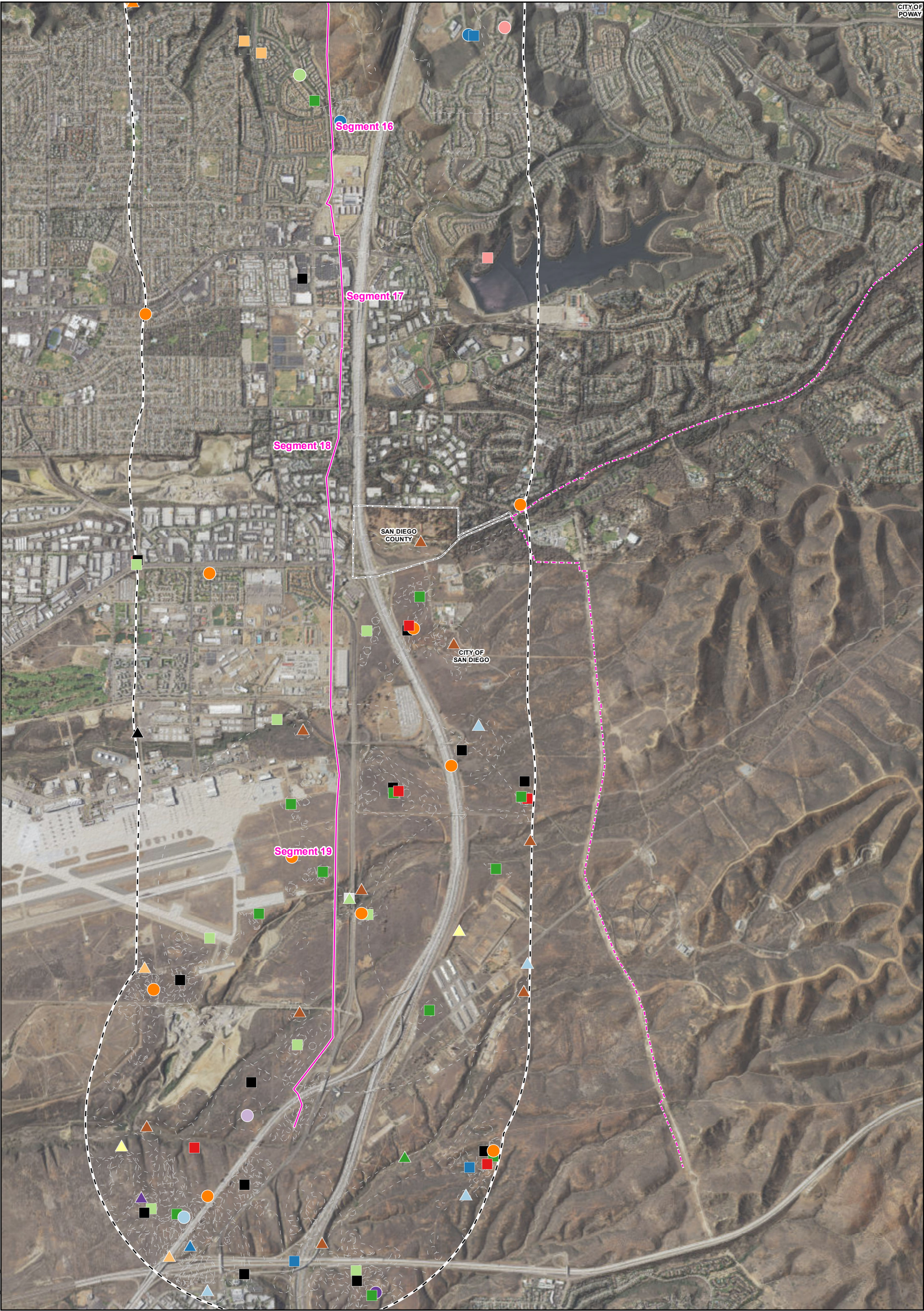
Line 1600 CNDDDB Plants Map 6 of 7

Pipeline Safety & Reliability Project

- Line 1600 Segment
Proposed Project Route
1-Mile Project Buffer
City/County Boundary
- CNDDDB Plants**
- California adolphia
 - Coulter's saltbush
 - Nuttall's scrub oak
 - Robinson's pepper-grass
 - San Diego ambrosia
 - San Diego barrel cactus
 - San Diego button-celery
 - San Diego goldenstar
 - San Diego marsh-elder
 - San Diego mesa mint
 - Southern Coast Live Oak Riparian Forest
 - Southern Riparian Forest
 - Southern Sycamore Alder Riparian Woodland
 - variegated dudleya
 - decumbent goldenbush
 - thread-leaved brodiaea

The California Natural Diversity Database (CNDDDB) contains location records (known as occurrences) of rare and sensitive plant and animal species. An occurrence can represent an individual, population, nest site, den, or stand. This map depicts CNDDDB occurrences for sensitive plants within one mile of the Line 1600 alignment. The dashed line surrounding each occurrence displays the accuracy of the source location (e.g., the bigger the circle, the less accurate the source is). The information shown on this map is preliminary and is intended for evaluating Project alternatives.





MXDs\ed\loc\1600_CNDDDB_Plants_v3.mxd 9/28/2016

Line 1600 CNDDDB Plants Map 7 of 7

Pipeline Safety & Reliability Project

- Line 1600 Segment

Proposed Project Route

1-Mile Project Buffer

City/County Boundary
- CNDDDB Plants**

 - California Orcutt grass
 - California adolphia
 - Campbell's liverwort
 - Del Mar manzanita
 - Encinitas baccharis
 - Nuttall's scrub oak
 - Orcutt's brodiaea
 - Otay Mountain ceanothus
 - Palmer's grapplehook
 - San Diego Mesa Hardpan Vernal Pool
 - San Diego barrel cactus
 - San Diego button-celery
 - San Diego goldenstar
 - San Diego marsh-elder
 - San Diego mesa mint
 - San Diego thorn-mint
 - chaparral ragwort
 - decumbent goldenbush
 - long-spined spineflower
 - prostrate vernal pool navarretia
 - purple stemodia
 - singlewhorl burrobrush
 - spreading navarretia
 - summer holly
 - variegated dudleya
 - wart-stemmed ceanothus
 - willowy monardella

The California Natural Diversity Database (CNDDDB) contains location records (known as occurrences) of rare and sensitive plant and animal species. An occurrence can represent an individual, population, nest site, den, or stand. This map depicts CNDDDB occurrences within one mile of the Line 1600 alignment. The dashed line surrounding each occurrence displays the accuracy of the source location (e.g., the bigger the circle, the less accurate the source is). The information shown on this map is preliminary and is intended for evaluating Project alternatives.

