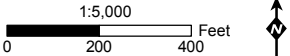


Exhibit DR_1.4.1-1: Aesthetic Resources and Characterization Photograph Viewpoint Locations Map 2 of 42 Pipeline Safety & Reliability Project

■ Milepost	Permanent	Temporary	▲ Photo Location	▨ Potential tree or large shrub removal
▭ City/County Boundary	— Proposed Project Route	■ Bore Pit	▲ Scenic Vista Location	▨ Parks
▭ Existing Facility	- - - Trenchless Construction	▭ Horizontal Directional Drill Workspace	— County Scenic Highway and/or Eligible State Scenic Highway	▨ Military
	— Cross-Tie Connector Line	▭ Laydown Area		
	▭ Aboveground Facility	▭ Workspace		

The information depicted in these maps is preliminary and subject to change based on California Public Utilities Commission requirements, final engineering, and other factors.
- I-15 is an Eligible State Scenic Highway between the Riverside County Line and State Route 76.



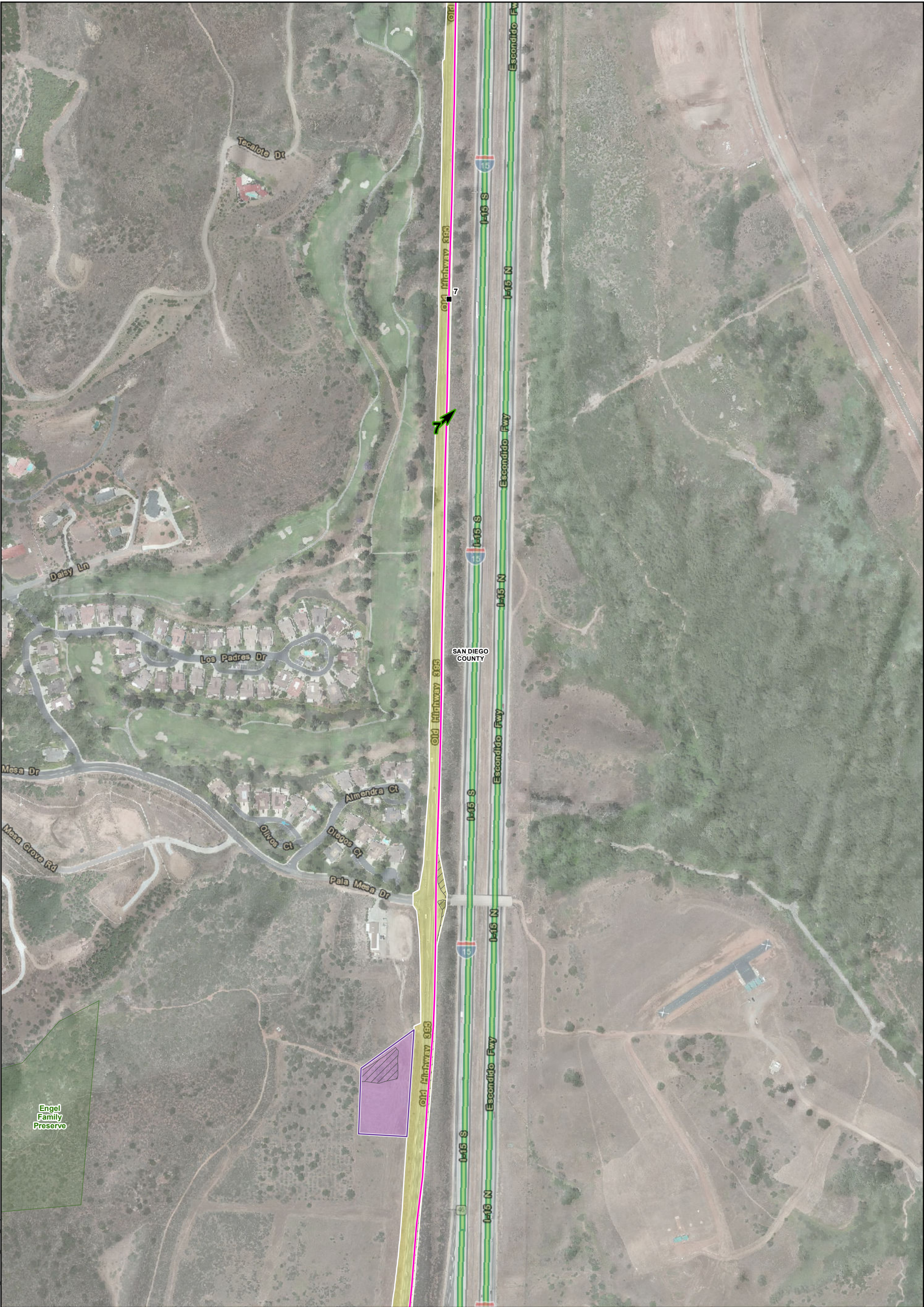


Exhibit DR_1.4.1-1: Aesthetic Resources and Characterization Photograph Viewpoint Locations Map 7 of 42 Pipeline Safety & Reliability Project

■ Milepost

City/County Boundary

Existing Facility

Proposed Project Route

Trenchless Construction

Cross-Tie Connector Line

Aboveground Facility

Temporary

Bore Pit

Horizontal Directional Drill Workspace

Laydown Area

Workspace

Photo Location

Scenic Vista Location

County Scenic Highway and/or Eligible State Scenic Highway

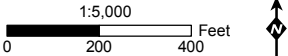
Potential tree or large shrub removal

Parks

Military

The information depicted in these maps is preliminary and subject to change based on California Public Utilities Commission requirements, final engineering, and other factors.

I-15 is an Eligible State Scenic Highway between the Riverside County Line and State Route 76.



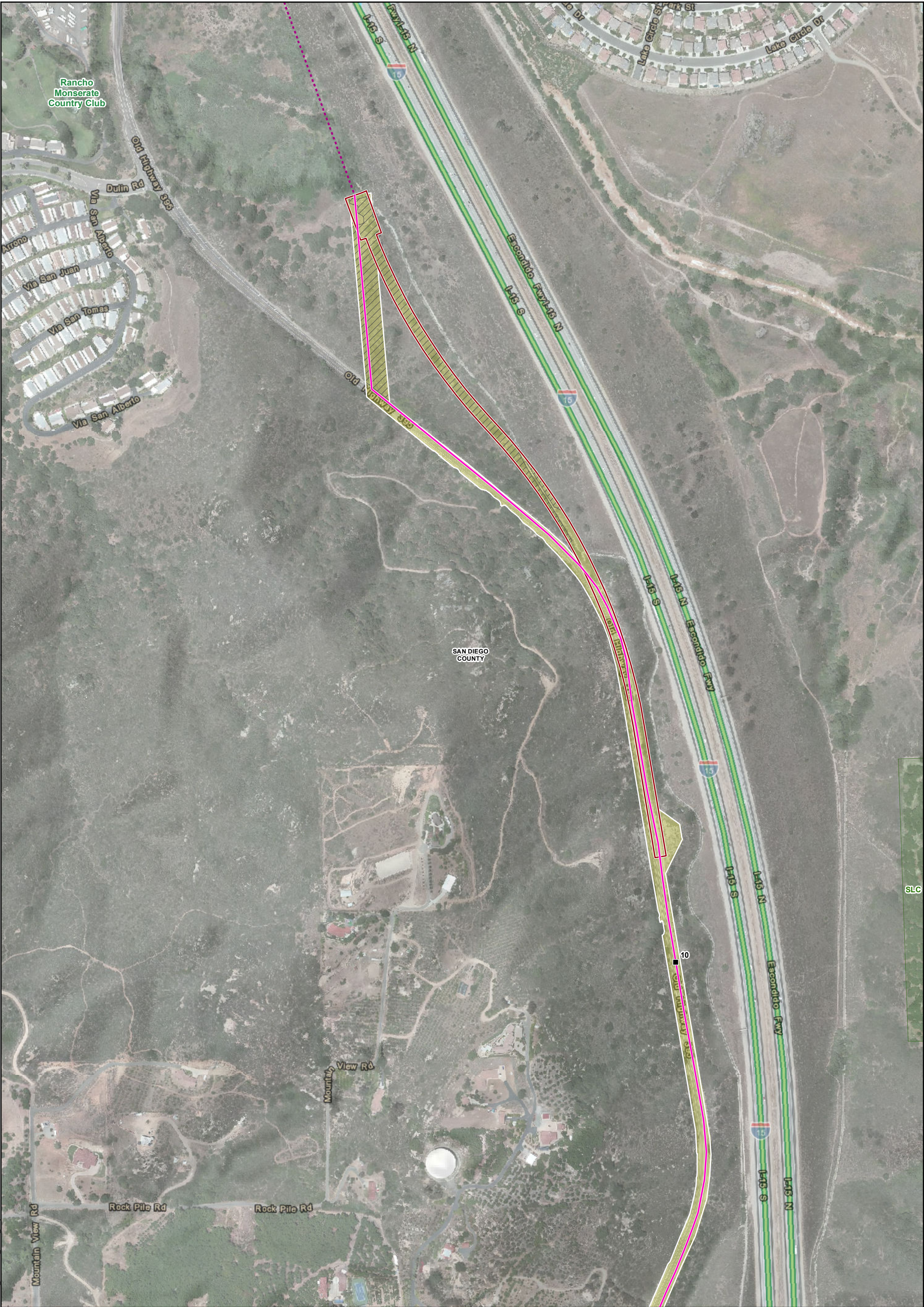


Exhibit DR_1.4.1-1: Aesthetic Resources and Characterization Photograph Viewpoint Locations Map 9 of 42 Pipeline Safety & Reliability Project

■ Milepost	Permanent	Temporary	▲ Photo Location	▨ Potential tree or large shrub removal
▭ City/County Boundary	— Proposed Project Route	■ Bore Pit	▼ Scenic Vista Location	▨ Parks
▭ Existing Facility	--- Trenchless Construction	▭ Horizontal Directional Drill Workspace	— County Scenic Highway and/or Eligible State Scenic Highway	▨ Military
	— Cross-Tie Connector Line	▭ Laydown Area		
	▭ Aboveground Facility	▭ Workspace		

The information depicted in these maps is preliminary and subject to change based on California Public Utilities Commission requirements, final engineering, and other factors.
- I-15 is an Eligible State Scenic Highway between the Riverside County Line and State Route 76.

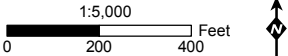




Exhibit DR_1.4.1-1: Aesthetic Resources and Characterization Photograph Viewpoint Locations Map 12 of 42 Pipeline Safety & Reliability Project

■ Milepost

Existing Facility

Permanent

Proposed Project Route

Trenchless Construction

Cross-Tie Connector Line

Aboveground Facility

Temporary

Bore Pit

Horizontal Directional Drill Workspace

Laydown Area

Workspace

Photo Location

Scenic Vista Location

County Scenic Highway and/or Eligible State Scenic Highway

Potential tree or large shrub removal

Parks

Military

- The information depicted in these maps is preliminary and subject to change based on California Public Utilities Commission requirements, final engineering, and other factors.
- I-15 is an Eligible State Scenic Highway between the Riverside County Line and State Route 76.

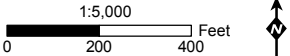




Exhibit DR_1.4.1-1: Aesthetic Resources and Characterization Photograph Viewpoint Locations Map 13 of 42 Pipeline Safety & Reliability Project

■ Milepost	Permanent	Temporary	▲ Photo Location	▨ Potential tree or large shrub removal
▭ City/County Boundary	— Proposed Project Route	■ Bore Pit	▲ Scenic Vista Location	▨ Parks
▭ Existing Facility	- - - Trenchless Construction	▭ Horizontal Directional Drill Workspace	— County Scenic Highway and/or Eligible State Scenic Highway	▨ Military
	— Cross-Tie Connector Line	▭ Laydown Area		
	▭ Aboveground Facility	▭ Workspace		

The information depicted in these maps is preliminary and subject to change based on California Public Utilities Commission requirements, final engineering, and other factors.
- I-15 is an Eligible State Scenic Highway between the Riverside County Line and State Route 76.

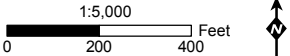




Exhibit DR_1.4.1-1: Aesthetic Resources and Characterization Photograph Viewpoint Locations Map 15 of 42 Pipeline Safety & Reliability Project

■ Milepost

City/County Boundary

Existing Facility

Permanent

Proposed Project Route

Trenchless Construction

Cross-Tie Connector Line

Aboveground Facility

Temporary

Bore Pit

Horizontal Directional Drill Workspace

Laydown Area

Workspace

Photo Location

Scenic Vista Location

County Scenic Highway and/or Eligible State Scenic Highway

Potential tree or large shrub removal

Parks

Military

The information depicted in these maps is preliminary and subject to change based on California Public Utilities Commission requirements, final engineering, and other factors.

I-15 is an Eligible State Scenic Highway between the Riverside County Line and State Route 76.

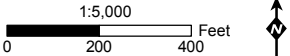


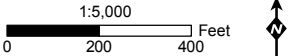


Exhibit DR_1.4.1-1: Aesthetic Resources and Characterization Photograph Viewpoint Locations Map 16 of 42 Pipeline Safety & Reliability Project

■ Milepost	Permanent	Temporary	▲ Photo Location	▨ Potential tree or large shrub removal
▭ City/County Boundary	— Proposed Project Route	■ Bore Pit	▼ Scenic Vista Location	▨ Parks
▭ Existing Facility	--- Trenchless Construction	▭ Horizontal Directional Drill Workspace	— County Scenic Highway and/or Eligible State Scenic Highway	▨ Military
	— Cross-Tie Connector Line	▭ Laydown Area		
	▭ Aboveground Facility	▭ Workspace		

The information depicted in these maps is preliminary and subject to change based on California Public Utilities Commission requirements, final engineering, and other factors.
- I-15 is an Eligible State Scenic Highway between the Riverside County Line and State Route 76.

MXDs\PEAA\Aesthetics\Detailed Character Photo Map.mxd 11/12/15



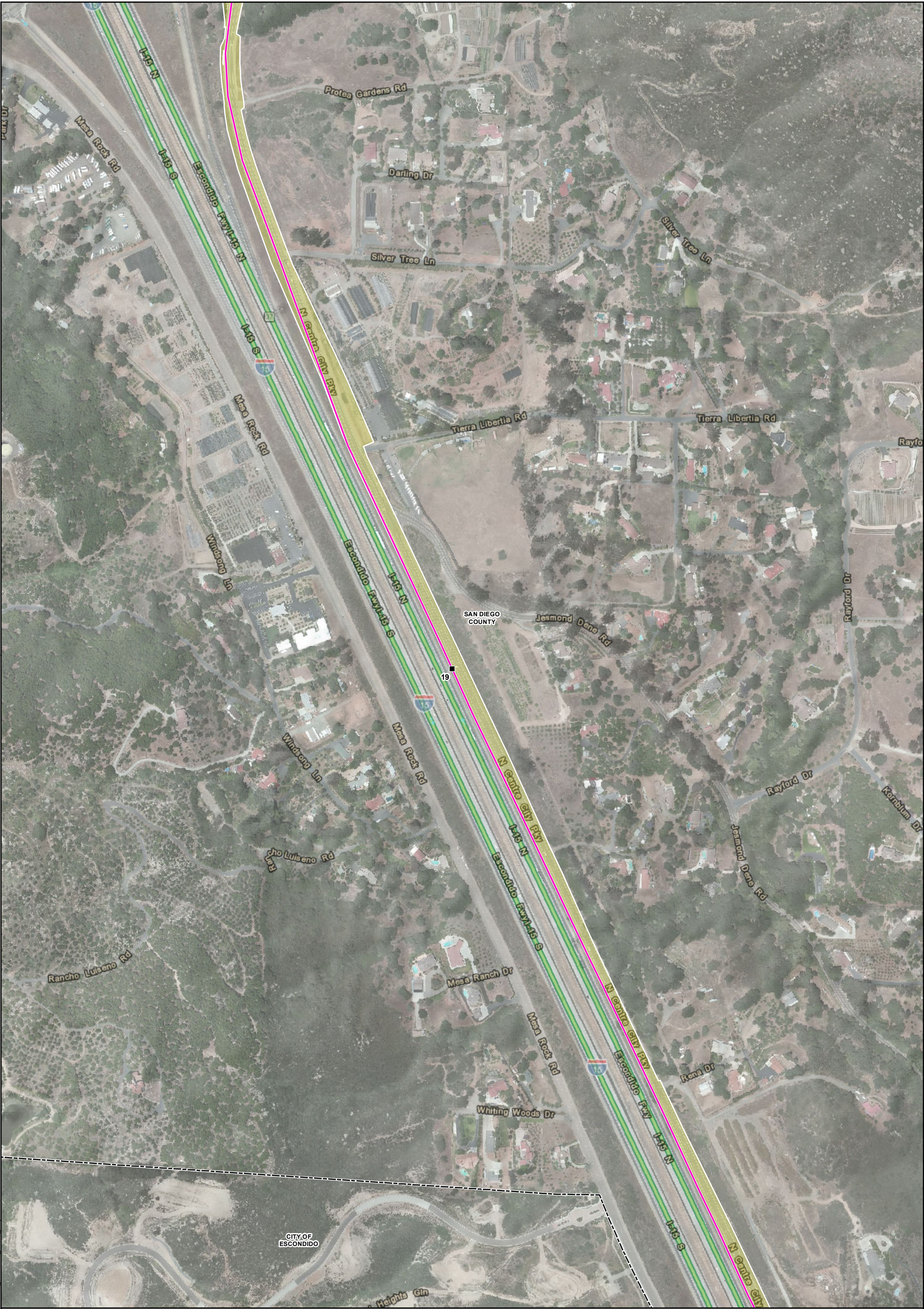


Exhibit DR_1.4.1-1: Aesthetic Resources and Characterization Photograph Viewpoint Locations Map 17 of 42 Pipeline Safety & Reliability Project

■ Milepost

City/County Boundary

Existing Facility

Permanent

Proposed Project Route

Trenchless Construction

Cross-Tie Connector Line

Aboveground Facility

Temporary

Bore Pit

Horizontal Directional Drill Workspace

Laydown Area

Workspace

▲ Photo Location

Scenic Vista Location

County Scenic Highway and/or Eligible State Scenic Highway

Potential tree or large shrub removal

Parks

Military

The information depicted in these maps is preliminary and subject to change based on California Public Utilities Commission requirements, final engineering, and other factors.

I-15 is an Eligible State Scenic Highway between the Riverside County Line and State Route 76.

MXDs\PEAA\Aesthetics\Detailed Character Photo Map.mxd 11/12/15



Exhibit DR_1.4.1-1: Aesthetic Resources and Characterization Photograph Viewpoint Locations Map 18 of 42 Pipeline Safety & Reliability Project

■ Milepost	Permanent	Temporary	▲ Photo Location	▨ Potential tree or large shrub removal
▭ City/County Boundary	— Proposed Project Route	■ Bore Pit	▼ Scenic Vista Location	▨ Parks
▭ Existing Facility	- - - Trenchless Construction	▭ Horizontal Directional Drill Workspace	— County Scenic Highway and/or Eligible State Scenic Highway	▨ Military
	— Cross-Tie Connector Line	▭ Laydown Area		
	▭ Aboveground Facility	▭ Workspace		

The information depicted in these maps is preliminary and subject to change based on California Public Utilities Commission requirements, final engineering, and other factors.
- I-15 is an Eligible State Scenic Highway between the Riverside County Line and State Route 76.

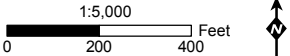
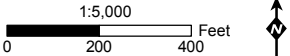




Exhibit DR_1.4.1-1: Aesthetic Resources and Characterization Photograph Viewpoint Locations Map 21 of 42 Pipeline Safety & Reliability Project

■ Milepost	Permanent	Temporary	▲ Photo Location	▨ Potential tree or large shrub removal
▭ City/County Boundary	— Proposed Project Route	■ Bore Pit	▲ Scenic Vista Location	▨ Parks
▭ Existing Facility	--- Trenchless Construction	▭ Horizontal Directional Drill Workspace	— County Scenic Highway and/or Eligible State Scenic Highway	▨ Military
	— Cross-Tie Connector Line	▭ Laydown Area		
	▭ Aboveground Facility	▭ Workspace		

The information depicted in these maps is preliminary and subject to change based on California Public Utilities Commission requirements, final engineering, and other factors.
- I-15 is an Eligible State Scenic Highway between the Riverside County Line and State Route 76.



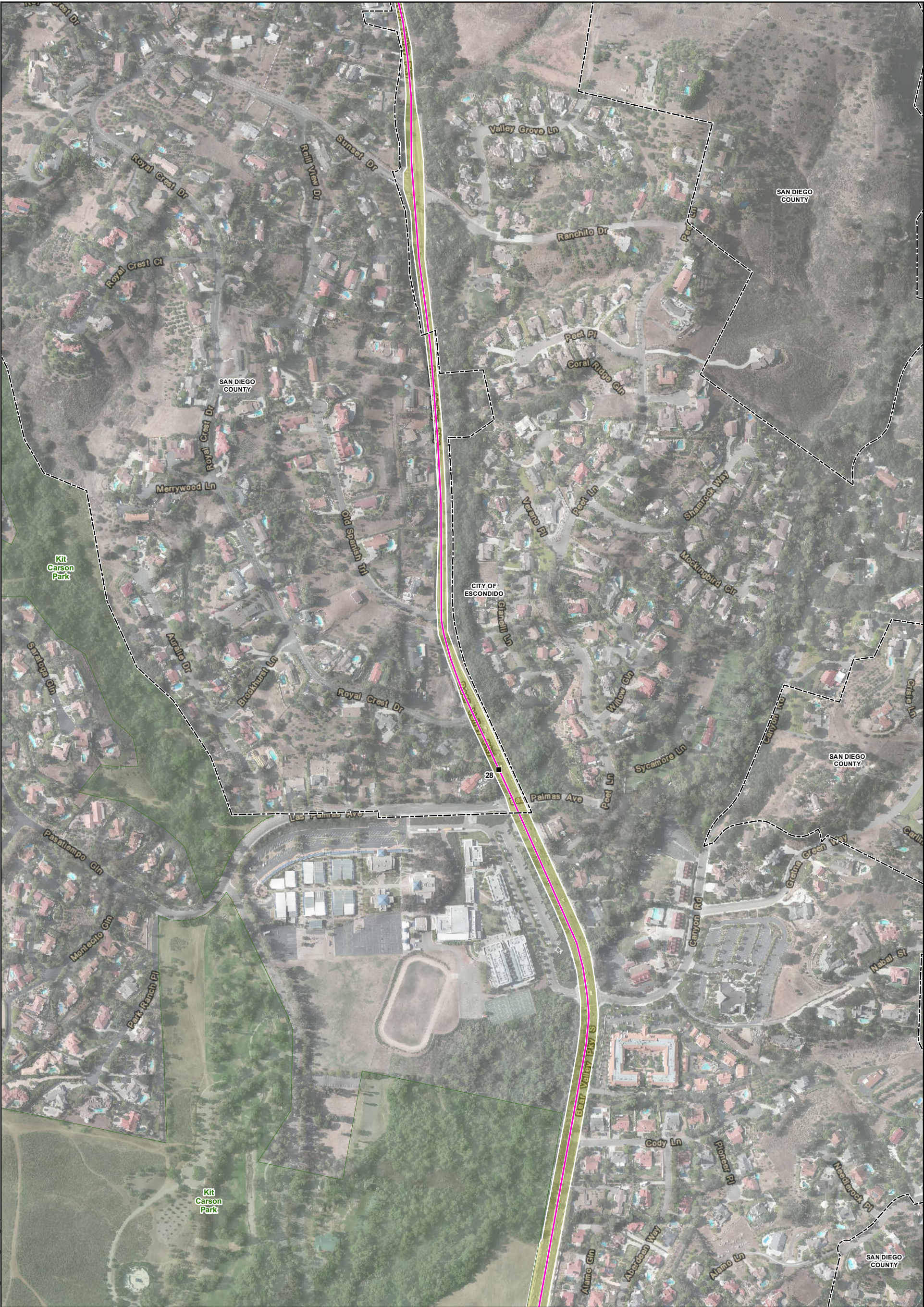


Exhibit DR_1.4.1-1: Aesthetic Resources and Characterization Photograph Viewpoint Locations Map 25 of 42 Pipeline Safety & Reliability Project

■ Milepost

City/County Boundary

Existing Facility

Permanent

Proposed Project Route

Trenchless Construction

Cross-Tie Connector Line

Aboveground Facility

Temporary

Bore Pit

Horizontal Directional Drill Workspace

Laydown Area

Workspace

▲ Photo Location

Scenic Vista Location

County Scenic Highway and/or Eligible State Scenic Highway

Potential tree or large shrub removal

Parks

Military

The information depicted in these maps is preliminary and subject to change based on California Public Utilities Commission requirements, final engineering, and other factors.

I-15 is an Eligible State Scenic Highway between the Riverside County Line and State Route 76.

MXDs\PEAA\Aesthetics\Detailed Character Photo Map.mxd 11/12/15

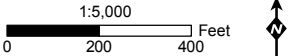




Exhibit DR_1.4.1-1: Aesthetic Resources and Characterization Photograph Viewpoint Locations Map 26 of 42 **Pipeline Safety & Reliability Project**

■ Milepost
 [---] City/County Boundary
 [---] Existing Facility
 [---] Aboveground Facility

Permanent
 — Proposed Project Route
 - - - Trenchless Construction
 — Cross-Tie Connector Line

Temporary
 [---] Bore Pit
 [---] Horizontal Directional Drill Workspace
 [---] Laydown Area
 [---] Workspace

[---] Photo Location
 [---] Scenic Vista Location
 [---] County Scenic Highway and/or Eligible State Scenic Highway

[---] Potential tree or large shrub removal
 [---] Parks
 [---] Military

- The information depicted in these maps is preliminary and subject to change based on California Public Utilities Commission requirements, final engineering, and other factors.
 - I-15 is an Eligible State Scenic Highway between the Riverside County Line and State Route 76.

- The information depicted in these maps is preliminary and subject to change based on California Public Utilities Commission requirements, final engineering, and other factors.
- I-15 is an Eligible State Scenic Highway between the Riverside County Line and State Route 76.

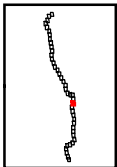




Exhibit DR_1.4.1-1: Aesthetic Resources and Characterization Photograph Viewpoint Locations Map 28 of 42 Pipeline Safety & Reliability Project

■ Milepost

City/County Boundary

Existing Facility

Permanent

Proposed Project Route

Trenchless Construction

Cross-Tie Connector Line

Aboveground Facility

Temporary

Bore Pit

Horizontal Directional Drill Workspace

Laydown Area

Workspace

▲ Photo Location

▼ Scenic Vista Location

County Scenic Highway and/or Eligible State Scenic Highway

Potential tree or large shrub removal

Parks

Military

The information depicted in these maps is preliminary and subject to change based on California Public Utilities Commission requirements, final engineering, and other factors.

- I-15 is an Eligible State Scenic Highway between the Riverside County Line and State Route 76.

MXDs\PEAA\Aesthetics\Detailed Character Photo Map.mxd 11/12/15

SoCalGas

SDGE

INSGNIA

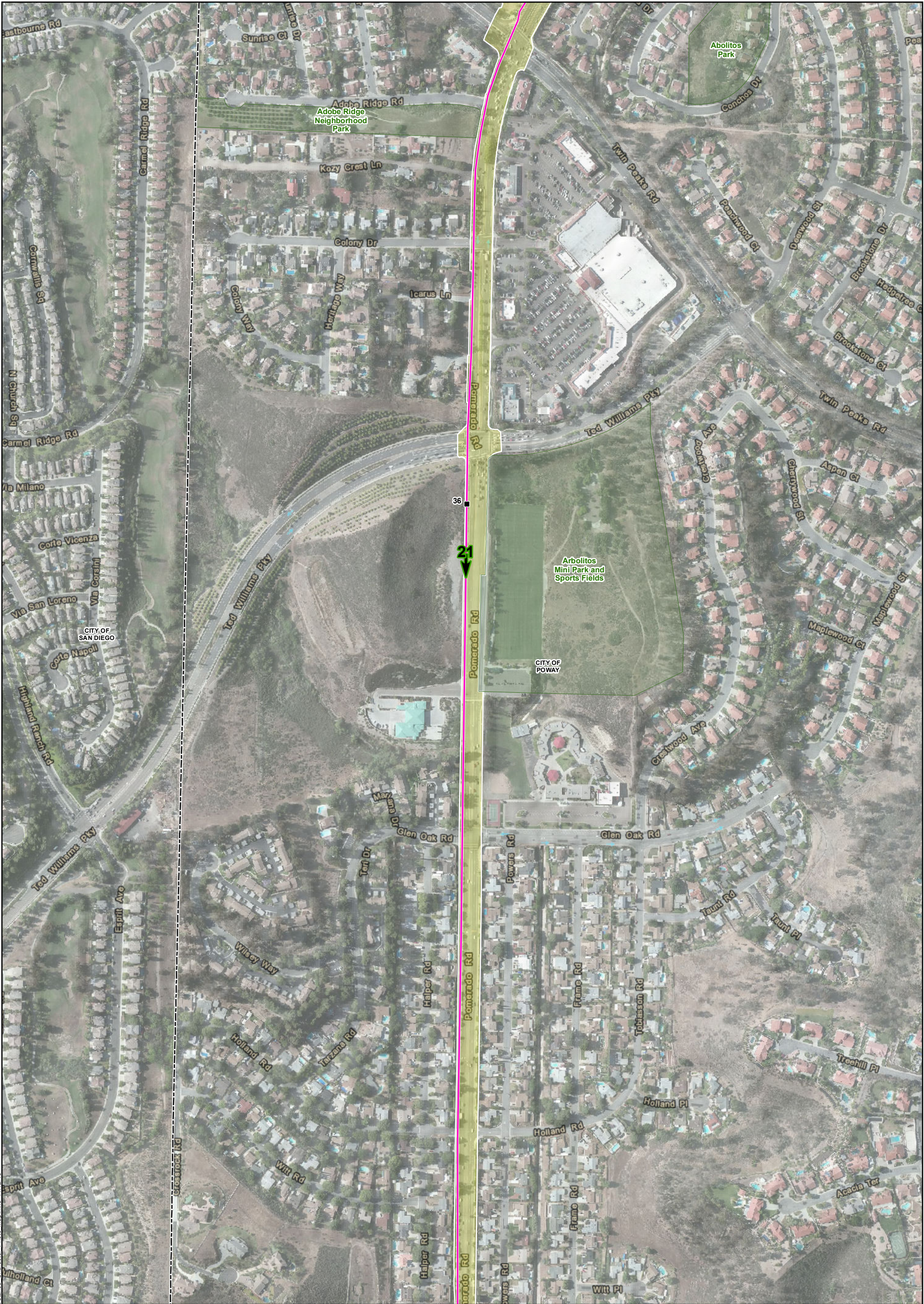


Exhibit DR_1.4.1-1: Aesthetic Resources and Characterization Photograph Viewpoint Locations Map 32 of 42 Pipeline Safety & Reliability Project

■ Milepost

City/County Boundary

Existing Facility

Permanent

Proposed Project Route

Trenchless Construction

Cross-Tie Connector Line

Aboveground Facility

Temporary

Bore Pit

Horizontal Directional Drill Workspace

Laydown Area

Workspace

▲ Photo Location

▼ Scenic Vista Location

County Scenic Highway and/or Eligible State Scenic Highway

Potential tree or large shrub removal

Parks

Military

The information depicted in these maps is preliminary and subject to change based on California Public Utilities Commission requirements, final engineering, and other factors.

- I-15 is an Eligible State Scenic Highway between the Riverside County Line and State Route 76.

SoCalGas

Sempra Energy

SDGE

Sempra Energy

INSIGNIA

ENVIRONMENTAL

MXDs\PEAA\Aesthetics\Detailed Character Photo Map.mxd 11/12/15

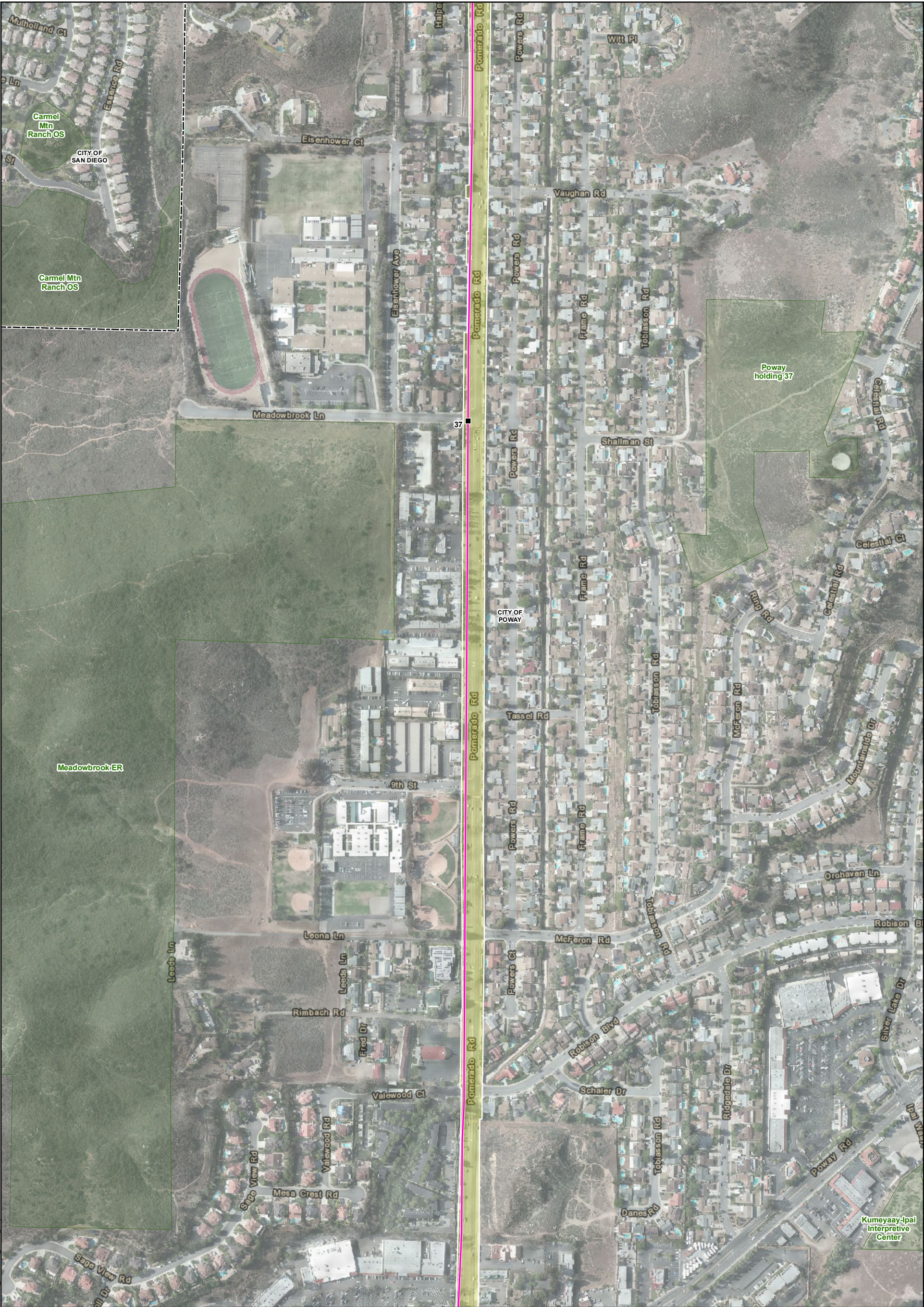


Exhibit DR_1.4.1-1: Aesthetic Resources and Characterization Photograph Viewpoint Locations Map 33 of 42 Pipeline Safety & Reliability Project

■ Milepost

City/County Boundary

Existing Facility

Proposed Project Route

Trenchless Construction

Cross-Tie Connector Line

Aboveground Facility

Bore Pit

Horizontal Directional Drill Workspace

Laydown Area

Workspace

▲ Photo Location

Scenic Vista Location

County Scenic Highway and/or Eligible State Scenic Highway

Potential tree or large shrub removal

Parks

Military

The information depicted in these maps is preliminary and subject to change based on California Public Utilities Commission requirements, final engineering, and other factors.

- I-15 is an Eligible State Scenic Highway between the Riverside County Line and State Route 76.

MXDs\PEAA\Aesthetics\Detailed Character Photo Map.mxd 11/12/15

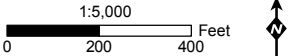




Exhibit DR_1.4.1-1: Aesthetic Resources and Characterization Photograph Viewpoint Locations Map 36 of 42 Pipeline Safety & Reliability Project

■ Milepost	Permanent	Temporary	▲ Photo Location	▨ Potential tree or large shrub removal
▭ City/County Boundary	— Proposed Project Route	■ Bore Pit	▲ Scenic Vista Location	▭ Parks
▭ Existing Facility	- - - Trenchless Construction	▭ Horizontal Directional Drill Workspace	— County Scenic Highway and/or Eligible State Scenic Highway	▭ Military
	— Cross-Tie Connector Line	▭ Laydown Area		
	▭ Aboveground Facility	▭ Workspace		

The information depicted in these maps is preliminary and subject to change based on California Public Utilities Commission requirements, final engineering, and other factors.
- I-15 is an Eligible State Scenic Highway between the Riverside County Line and State Route 76.

MXDs\PEAA\Aesthetics\Detailed Character Photo Map.mxd 11/12/15

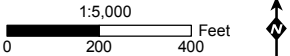




Exhibit DR_1.4.1-1: Aesthetic Resources and Characterization Photograph Viewpoint Locations Map 37 of 42 Pipeline Safety & Reliability Project

■ Milepost	Permanent	Temporary	▲ Photo Location	▨ Potential tree or large shrub removal
▭ City/County Boundary	— Proposed Project Route	■ Bore Pit	▲ Scenic Vista Location	▭ Parks
▭ Existing Facility	- - - Trenchless Construction	▭ Horizontal Directional Drill Workspace	— County Scenic Highway and/or Eligible State Scenic Highway	▭ Military
	— Cross-Tie Connector Line	▭ Laydown Area		
	▭ Aboveground Facility	▭ Workspace		

The information depicted in these maps is preliminary and subject to change based on California Public Utilities Commission requirements, final engineering, and other factors.
- I-15 is an Eligible State Scenic Highway between the Riverside County Line and State Route 76.

MXDs\PEAA\Aesthetics\Detailed Character Photo Map.mxd 11/12/15

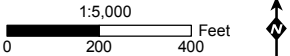




Exhibit DR_1.4.1-1: Aesthetic Resources and Characterization Photograph Viewpoint Locations Map 40 of 42 Pipeline Safety & Reliability Project

■ Milepost

City/County Boundary

Existing Facility

Permanent

Proposed Project Route

Trenchless Construction

Cross-Tie Connector Line

Aboveground Facility

Temporary

Bore Pit

Horizontal Directional Drill Workspace

Laydown Area

Workspace

▲ Photo Location

Scenic Vista Location

County Scenic Highway and/or Eligible State Scenic Highway

Potential tree or large shrub removal

Parks

Military

The information depicted in these maps is preliminary and subject to change based on California Public Utilities Commission requirements, final engineering, and other factors.

I-15 is an Eligible State Scenic Highway between the Riverside County Line and State Route 76.

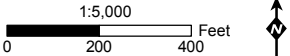
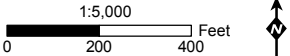




Exhibit DR_1.4.1-1: Aesthetic Resources and Characterization Photograph Viewpoint Locations Map 41 of 42 Pipeline Safety & Reliability Project

<ul style="list-style-type: none">MilepostCity/County BoundaryExisting Facility	Permanent <ul style="list-style-type: none">Proposed Project RouteTrenchless ConstructionCross-Tie Connector LineAboveground Facility	Temporary <ul style="list-style-type: none">Bore PitHorizontal Directional Drill WorkspaceLaydown AreaWorkspace	<ul style="list-style-type: none">Photo LocationScenic Vista LocationCounty Scenic Highway and/or Eligible State Scenic Highway	<ul style="list-style-type: none">Potential tree or large shrub removalParksMilitary	
---	---	---	---	--	--

- The information depicted in these maps is preliminary and subject to change based on California Public Utilities Commission requirements, final engineering, and other factors.
- I-15 is an Eligible State Scenic Highway between the Riverside County Line and State Route 76.



MXDs\PEAA\Aesthetics\Detailed Character Photo Map.mxd 11/12/15



Exhibit DR_1.4.1-1: Aesthetic Resources and Characterization Photograph Viewpoint Locations Map 42 of 42 Pipeline Safety & Reliability Project

■ Milepost	Permanent	Temporary	▲ Photo Location	▨ Potential tree or large shrub removal
▭ City/County Boundary	— Proposed Project Route	■ Bore Pit	▲ Scenic Vista Location	▭ Parks
▭ Existing Facility	--- Trenchless Construction	▭ Horizontal Directional Drill Workspace	— County Scenic Highway and/or Eligible State Scenic Highway	▭ Military
	— Cross-Tie Connector Line	▭ Laydown Area		
	▭ Aboveground Facility	▭ Workspace		

- The information depicted in these maps is preliminary and subject to change based on California Public Utilities Commission requirements, final engineering, and other factors.
- I-15 is an Eligible State Scenic Highway between the Riverside County Line and State Route 76.

