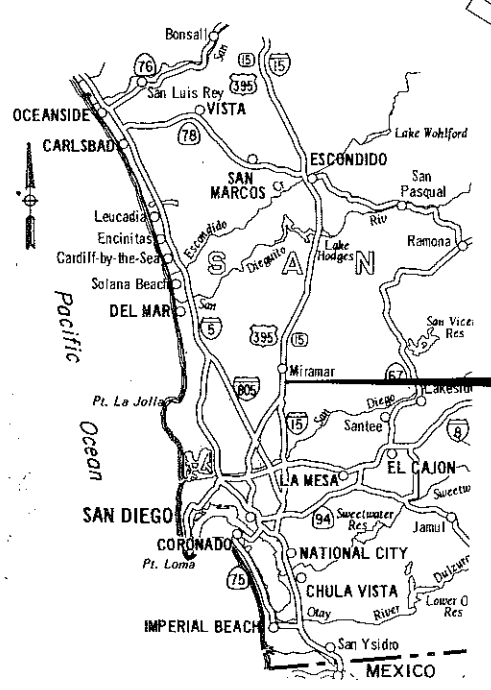
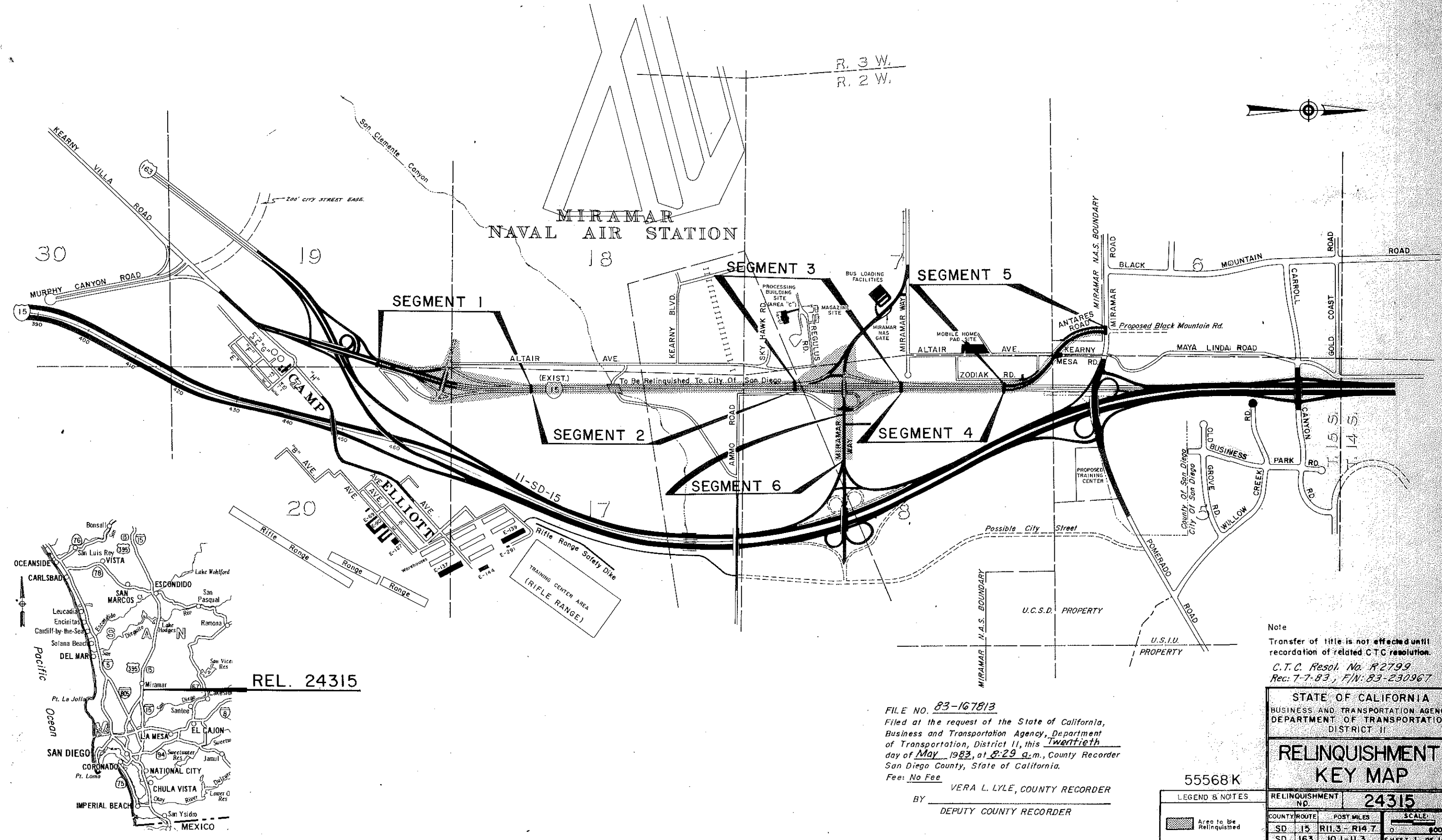


# CITY OF SAN DIEGO

*A.E. Deitchcock*  
DISTRICT RIGHT OF WAY ENGINEER, DISTRICT II, PCE 13043



REL. 24315

Note  
 Transfer of title is not effected until  
 recordation of related CTC resolution.  
 C.T.C. Resol. No. R-2799  
 Rec: 7-7-83, F/N: 83-230967

FILE NO. 83-167813  
 Filed at the request of the State of California,  
 Business and Transportation Agency, Department  
 of Transportation, District II, this Twentieth  
 day of May 1983, at 8:29 a.m., County Recorder  
 San Diego County, State of California.  
 Fee: No Fee  
 BY VERA L. LYLE, COUNTY RECORDER  
DEPUTY COUNTY RECORDER

STATE OF CALIFORNIA  
 BUSINESS AND TRANSPORTATION AGENCY  
 DEPARTMENT OF TRANSPORTATION  
 DISTRICT II

## RELINQUISHMENT KEY MAP

55568K

COUNTY/ROUTE	POST MILES	SCALE
SD 15	R11.3 - R14.7	0 100
SD 163	10.1 - 11.3	SHEET 1 OF 14

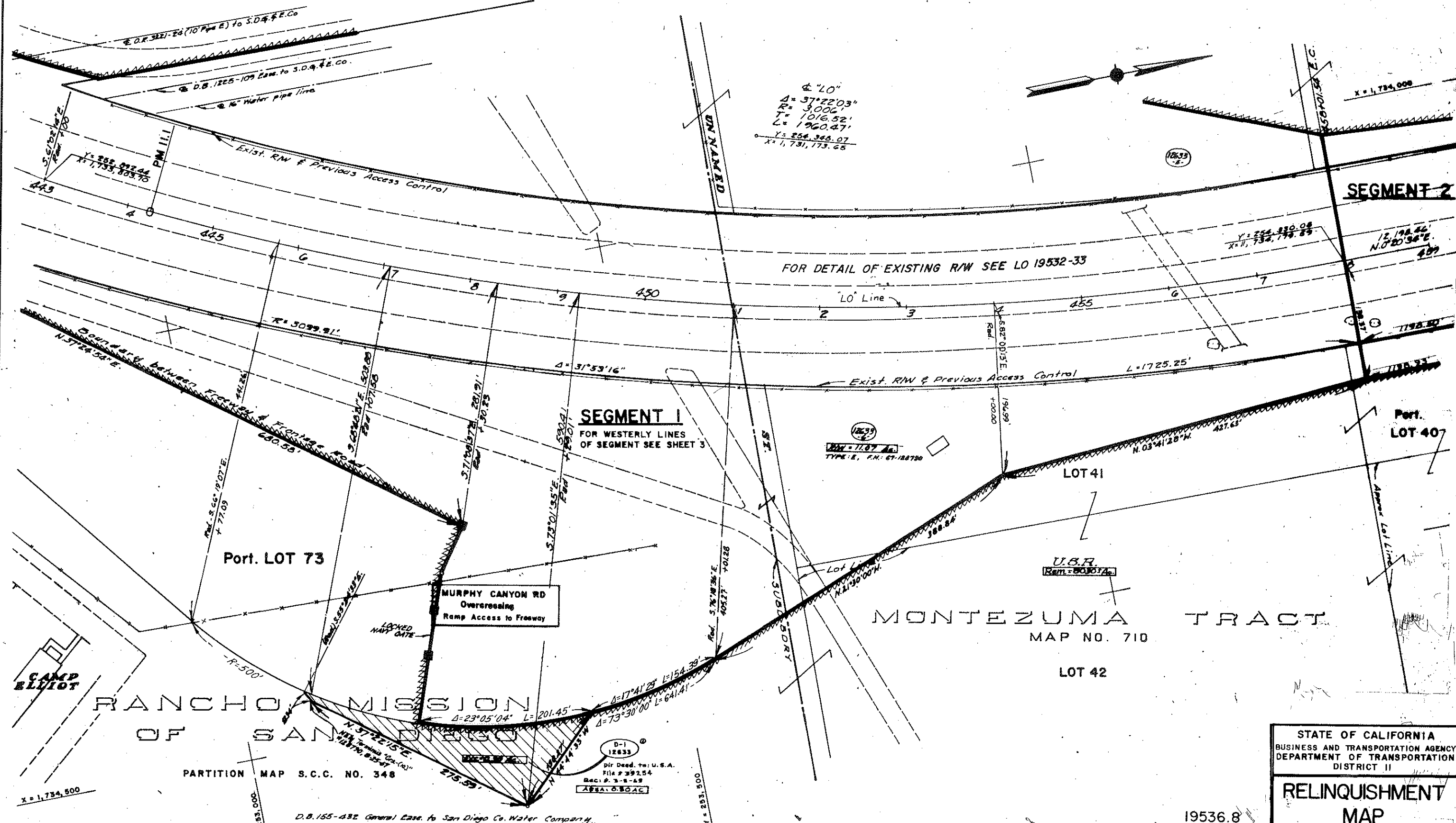
LEGEND & NOTES  
 Area to be Relinquished

# CITY OF SAN DIEGO

*Alfred S. Setherick*  
DISTRICT RIGHT OF WAY ENGINEER, DISTRICT II, ACE 13042

FOR THIS AREA SEE SHEET 2

FOR THIS AREA SEE SHEET 5



$\Delta = 37^{\circ}22'03''$   
 $R = 3006'$   
 $T = 1016.52'$   
 $L = 1960.47'$   
 $Y = 254,346.07$   
 $X = 1,731,173.65$

**SEGMENT 1**  
 FOR WESTERLY LINES  
 OF SEGMENT SEE SHEET 3

**REC-1107**  
 TYPE: E, F.N.: 67-188790

**U.S.R.**  
 Rem = 8030740

**D-1 12833**  
 Div. Deed. to: U.S.A.  
 File # 39254  
 Rec. P. 3-8-69  
 AREA: 0.80 AC

STATE OF CALIFORNIA  
 BUSINESS AND TRANSPORTATION AGENCY  
 DEPARTMENT OF TRANSPORTATION  
 DISTRICT II

## RELINQUISHMENT MAP

19536.8		24315	
LEGEND & NOTES			
	Access Denied		
	Area to be Relinquished		
	Access Relinquished		
COUNTY	ROUTE	POST MILES	SCALE
SD	15	11.1	0 50'
			SHEET 4 OF 14

D.B. 155-482 General Eas. to San Diego Co. Water Company.



# CITY OF SAN DIEGO

*Al G. Gethers*  
DISTRICT RIGHT OF WAY ENGINEER, DISTRICT II, RCE 13042

Former Co. R.S. 341 & XI-575 abandoned by C.H.C. Rec. 9-7-50

SUBD. BDRY. Pkto Lot Line 8 & abandoned by X-3-341

## MONTEZUMA TRACT

MAP NO. 710

### MIRAMAR NAVAL AIR STATION

U.S.H.  
Rem = 7480<sup>00</sup> Ac.

LOT 25

Scattered Brush

TYPE: E, F.N.: 68-128790  
R/W = 5.33 Ac.

TYPE: E, F.N.: 88-197387  
R/W = 0.94 Ac.

LOT 40

AVE.

LOT 24

X = 1,734,000

N. 2° 07' 55" E.

1249.07'

My terminus of Crs. (4)  
249.07' Inst. 128790  
Aug. 25th, 1947

Y = 255,879.180  
X = 1,734,081.048

N. 3° 20' 53" W.

450.94'

PM 11.4

1248.50'

Exist. R/W & Previous Access Control

FOR DETAIL OF EXISTING R/W SEE LO 19533

Y = 254,428.55  
X = 1,734,180.18

N. 0° 20' 34" E.

12,198.46'

Y = 256,028.32  
X = 1,734,185.75

459 460 1 2 3 4 465 6 470 1 2 3 4 475

### SEGMENT 2

1198.50'

Exist. R/W & Previous Access Control

11.00' 589° 39' 26" E

N. 00° 20' 34" E

8740.92'

N. 1° 15' 10" W.

1198.93'

My terminus of Crs. (4)  
1100' Inst. 128790  
Aug. 25th, 1947

Y = 255,527.899  
X = 1,734,291.753

N. 4° 01' 18" E.

701.45'

R/W = 9.35 Ac.  
TYPE: E, F.N.: 68-128790

R/W = 16.17 Ac.  
TYPE: E, F.N.: 88-197387

U.S.H.

Approx. Lot Lines

Scattered Brush

Rem = 8030<sup>00</sup> Ac.

LOT 39

JOSEPHINE

LOT 26

LOT 23

X = 1,734,800

STATE OF CALIFORNIA  
BUSINESS AND TRANSPORTATION AGENCY  
DEPARTMENT OF TRANSPORTATION  
DISTRICT II

## RELINQUISHMENT MAP

19536.10

LEGEND & NOTES

Access Denied  
Area to be Relinquished  
Access Relinquished

RELINQUISHMENT NO. 24315

COUNTY ROUTE POST MILES SCALE  
SD 15 11.4 0 50'  
SHEET 5 OF 14

*Al Dethlefs*  
DISTRICT RIGHT OF WAY ENGINEER, DISTRICT II, RC 15042

CITY OF SAN DIEGO

T. 15 S., R. 2 W., S.B.M.

FOR PREVIOUS R/W SEE L.O. 19536.7 & 19536.8

EXIST. 11-SD-163

SEGMENT I

STATE HIGHWAY MAP NO. 227

RANCHO MISSION OF SAN DIEGO

PARTITION OF SCC 348

LOT 73

W/4 Rem. 2 of 3 = 340.85 Ac.

SEC. 20

MIRAMAR NAVAL AIR STATION

STATE OF CALIFORNIA  
BUSINESS AND TRANSPORTATION AGENCY  
DEPARTMENT OF TRANSPORTATION  
DISTRICT II

RELINQUISHMENT  
MAP

19536.71

LEGEND & NOTES

- Access Denied
- Area to be Relinquished
- Access Relinquished

RELINQUISHMENT NO.

24315

COUNTY ROUTE

SD 163

POST MILES

10.9

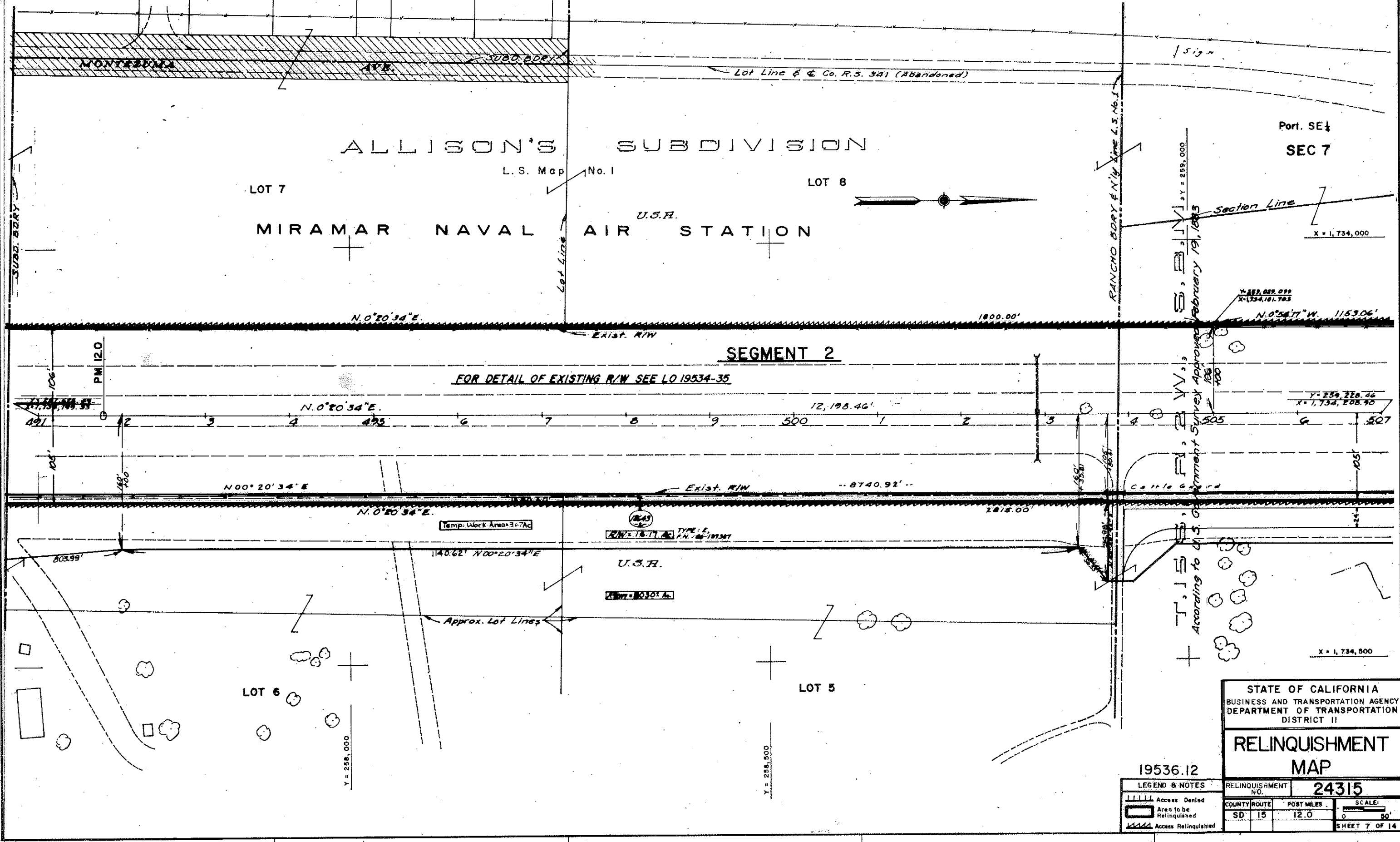
SCALE:

0 90'

SHEET 2 OF 14

FOR THIS AREA SEE SHEET 4

# CITY OF SAN DIEGO



STATE OF CALIFORNIA  
BUSINESS AND TRANSPORTATION AGENCY  
DEPARTMENT OF TRANSPORTATION  
DISTRICT II

## RELINQUISHMENT MAP

19536.12

LEGEND & NOTES

- Access Denied
- Area to be Relinquished
- Access Relinquished

RELINQUISHMENT NO.	24315	
COUNTY ROUTE	POST MILES	SCALE:
SD 15	12.0	0 50'
SHEET 7 OF 14		

FOR REVISED LO'S, SEE 19536.61, 19536.71, 19536.72

# CITY OF SAN DIEGO

*A. E. Hedrick*  
DISTRICT ENGINEER OF SAN DIEGO, DISTRICT II, CALIF. 1946

## RANCHO MISSION OF SAN DIEGO

PARTITION MAP S.C.C. NO. 348

U.S.H.

X = 1,733,500

Port. LOT 72

R.O.S. 1000

Area = 7480 Ac.

EXHIBIT

## MIRAMAR NAVAL AIR STATION



## MONTEZUMA TRACT

MAP NO. 710

LOT 41

LOT 40

SEGMENT 2

X = 1,734,000

SEGMENT 1

FOR EASTERLY LINES OF SEGMENT  
SEE SHEETS 2 AND 4

Area = 5.33 Ac.

TYPE: E, P.N.: 68-206200, FIRST  
MODIFICATION/ACCESS RIGHTS  
TYPE: E, P.N.: 67-78790, ACCESS RIGHTS  
U.S.H.

STATE OF CALIFORNIA  
BUSINESS AND TRANSPORTATION AGENCY  
DEPARTMENT OF TRANSPORTATION  
DISTRICT II

### RELINQUISHMENT MAP

19536.9

LEGEND & NOTES

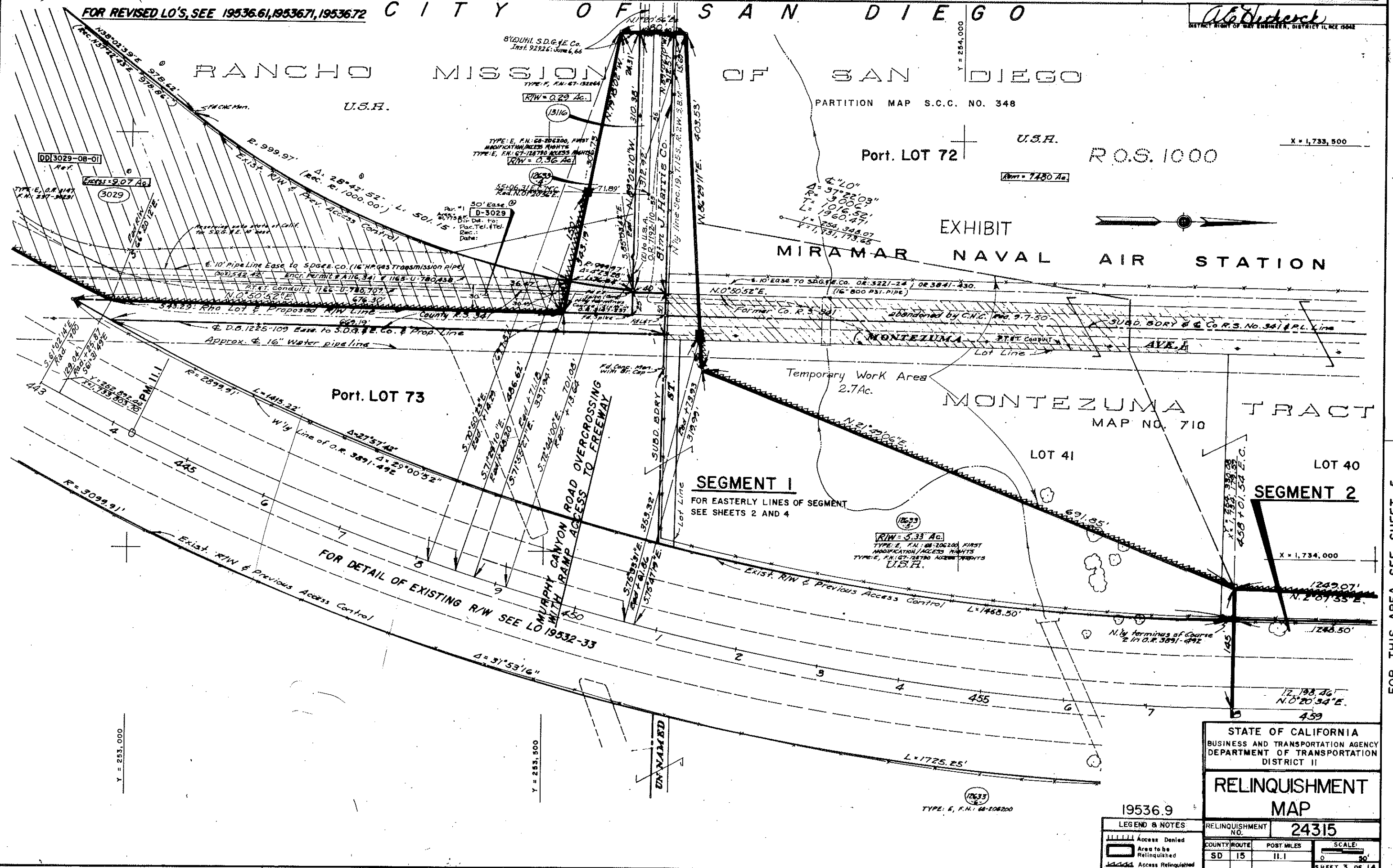
- Access Denied
- Area to be Relinquished
- Access Relinquished

RELINQUISHMENT NO.	24315
COUNTY/ROUTE	SD 15
POST MILES	11.1
SCALE:	0 50'
SHEET 3 OF 14	

FOR THIS AREA SEE SHEET 2

FOR THIS AREA SEE SHEET 5

FOR THIS AREA SEE SHEETS 2 AND 4



# CITY OF SAN DIEGO

*A. E. Decker*  
DISTRICT RIGHT OF WAY ENGINEER, DISTRICT 14, ACE 15042



FOR DETAIL OF EXISTING R/W SEE LO. 19535

FOR DETAIL OF EXISTING R/W SEE LO. 19536

**SEGMENT 2**

**SEGMENT 3**

**SEGMENT 6**

SEE SHEET 14

MIRAMAR WAY INTERCHANGE  
With Ramp Access To Freeway

United States of America  
Rem. 8050 AC.

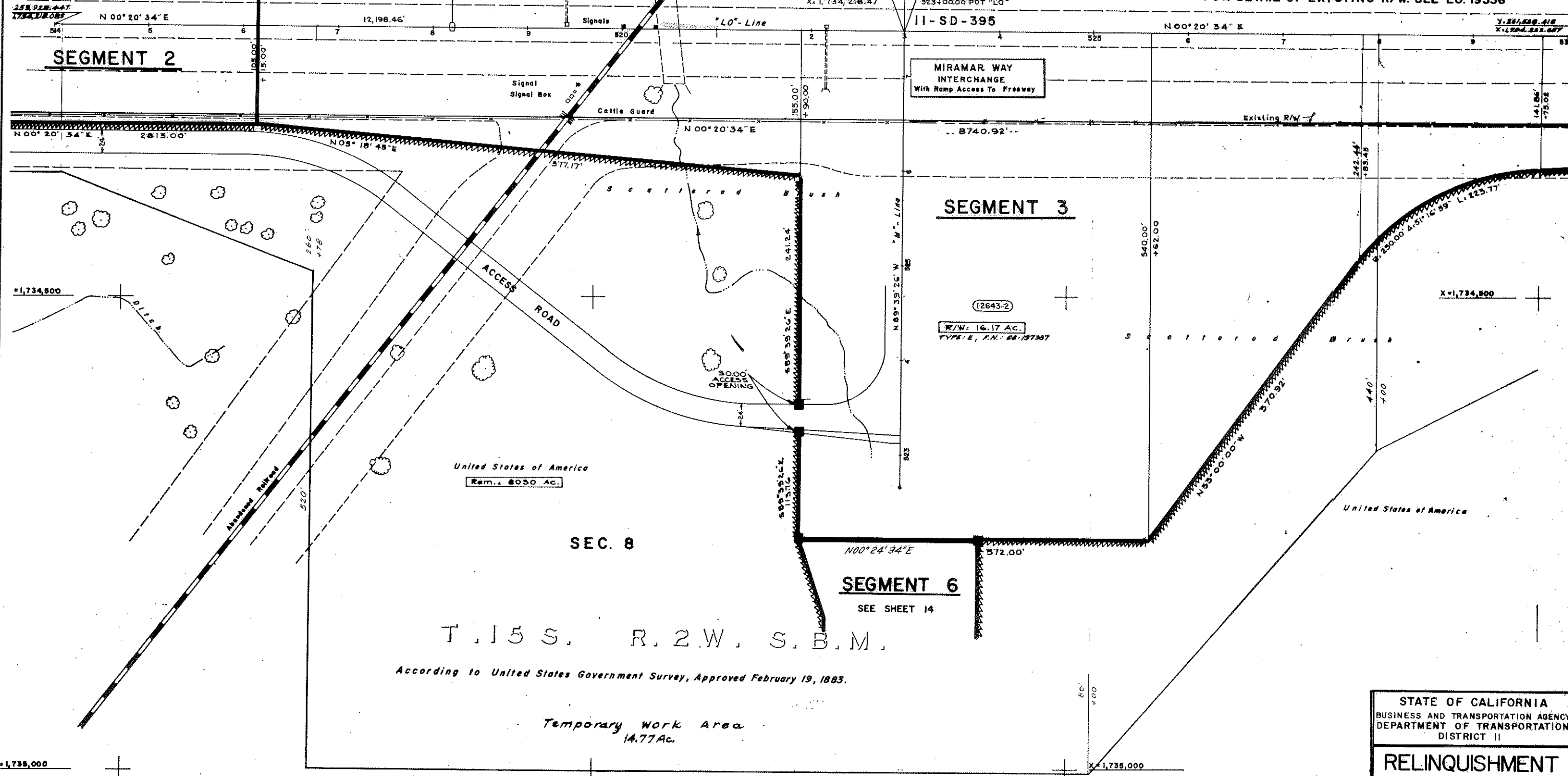
United States of America

SEC. 8

T. 15 S. R. 2 W. S. B. M.

According to United States Government Survey, Approved February 19, 1883.

Temporary Work Area  
14.77 Ac.



STATE OF CALIFORNIA  
BUSINESS AND TRANSPORTATION AGENCY  
DEPARTMENT OF TRANSPORTATION  
DISTRICT II

**RELINQUISHMENT MAP**

19536.13A

LEGEND & NOTES

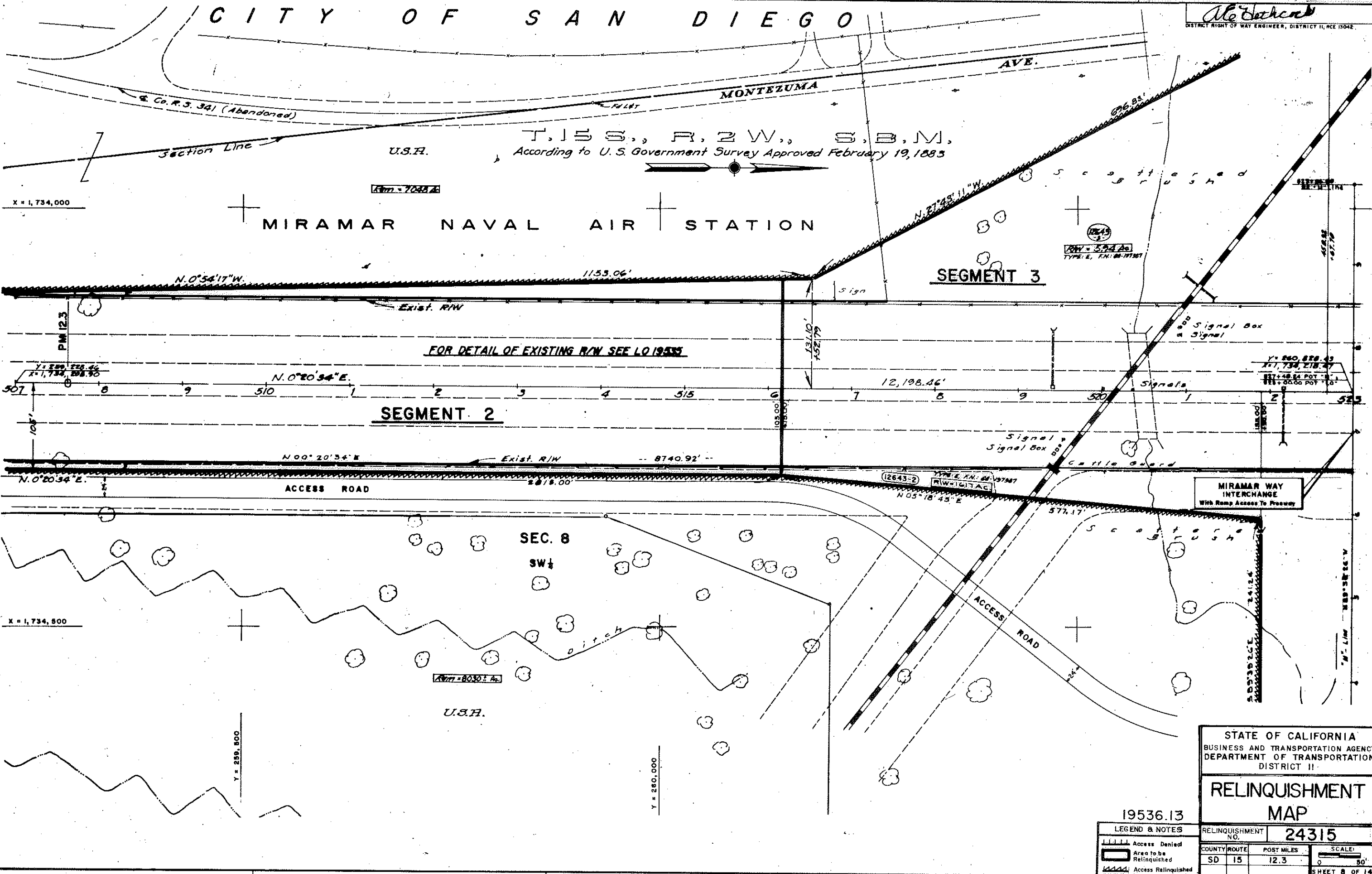
- Access Denied
- Area to be Relinquished
- Access Retained

RELINQUISHMENT NO.	24315	
COUNTY ROUTE	POST MILES	SCALE
SD 15	12.5	0 30 60



# CITY OF SAN DIEGO

*McHadden*  
DISTRICT RIGHT OF WAY ENGINEER, DISTRICT II, PCE 13042



STATE OF CALIFORNIA  
BUSINESS AND TRANSPORTATION AGENCY  
DEPARTMENT OF TRANSPORTATION  
DISTRICT II

## RELINQUISHMENT MAP

19536.13

RELINQUISHMENT NO. 24315

LEGEND & NOTES  

- Access Denied
- Area to be Relinquished
- Access Relinquished

COUNTY ROUTE	POST MILES	SCALE
SD 15	12.3	0 50'

*Al Dethlefs*  
DISTRICT RIGHT OF WAY ENGINEER, DISTRICT II, RCE 13042

# CITY OF SAN DIEGO

T. 15 S., R. 2 W., S. B. M. SEC. 8  
According to U.S. Government Survey Approved February 19, 1883

## MIRAMAR NAVAL AIR STATION

U.S.R.

SW 1/4

NW 1/4

X = 1,734,000

parking Area

MIRAMAR WAY (Abandoned by Co.)  
Approx. 1/2 Section Line

Temporary Work Area  
6.12 Ac.

Exist. R/W & Previous Access Control

FOR DETAIL OF EXISTING R/W SEE LO 19536

Exist. R/W & Previous Access Control

Temporary Working Area  
14.77 Ac.

Rem. 8030± AC.  
U.S.R.

SEGMENT 3

SEGMENT 4

PM 12.6

Y = 260,828.43  
X = 1,734,218.47  
327± 68.24 POT "H"  
825 ± 00.00 POT "L"

MIRAMAR WAY INTERCHANGE  
With Ramp Access to Freeway

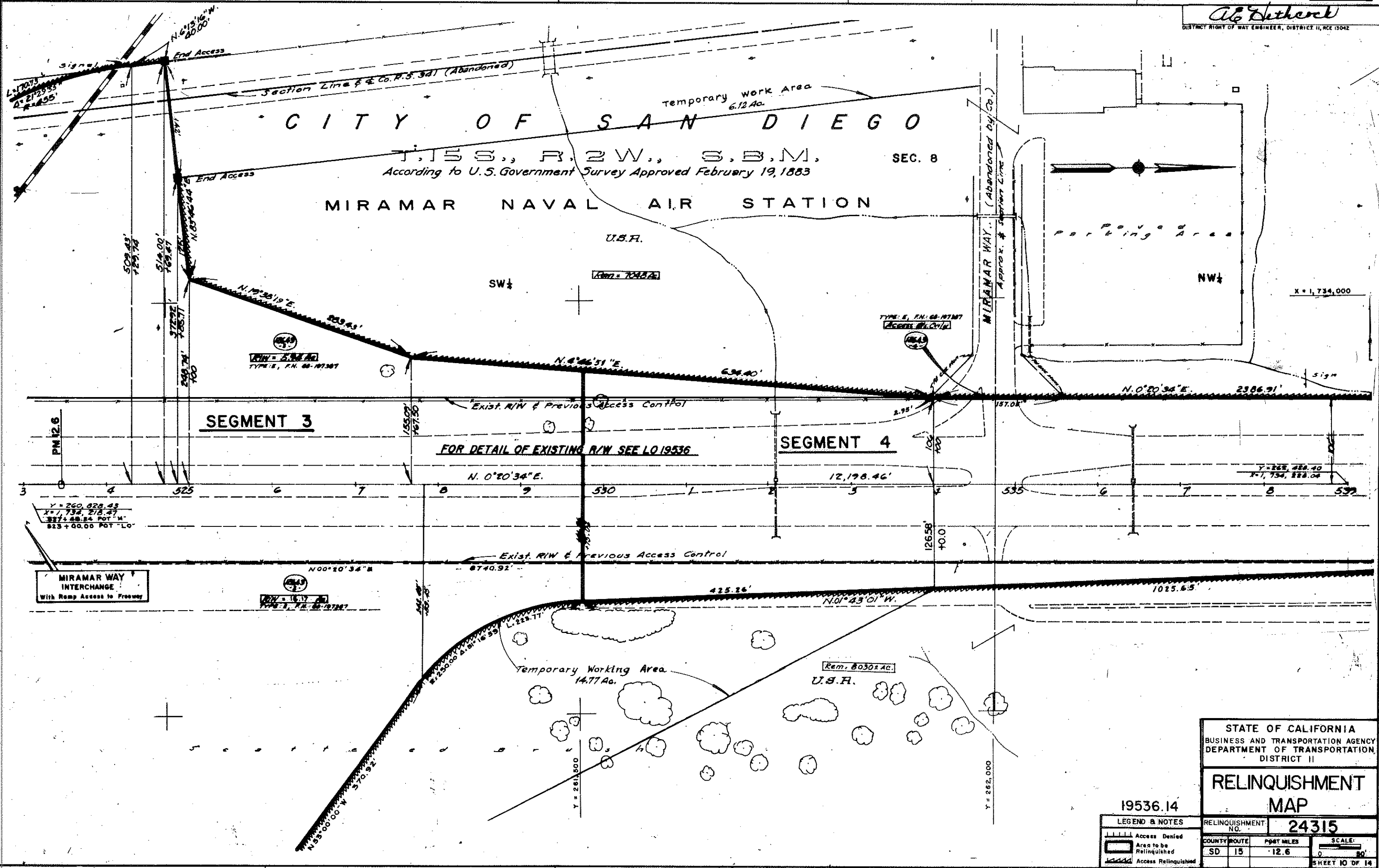
STATE OF CALIFORNIA  
BUSINESS AND TRANSPORTATION AGENCY  
DEPARTMENT OF TRANSPORTATION  
DISTRICT II

### RELINQUISHMENT MAP

19536.14

LEGEND & NOTES	
	Access Denied
	Area to be Relinquished
	Access Relinquished

RELINQUISHMENT NO.	24315
COUNTY ROUTE	SD 15
POST MILES	12.6
SCALE	1" = 30'
SHEET NO OF 14	



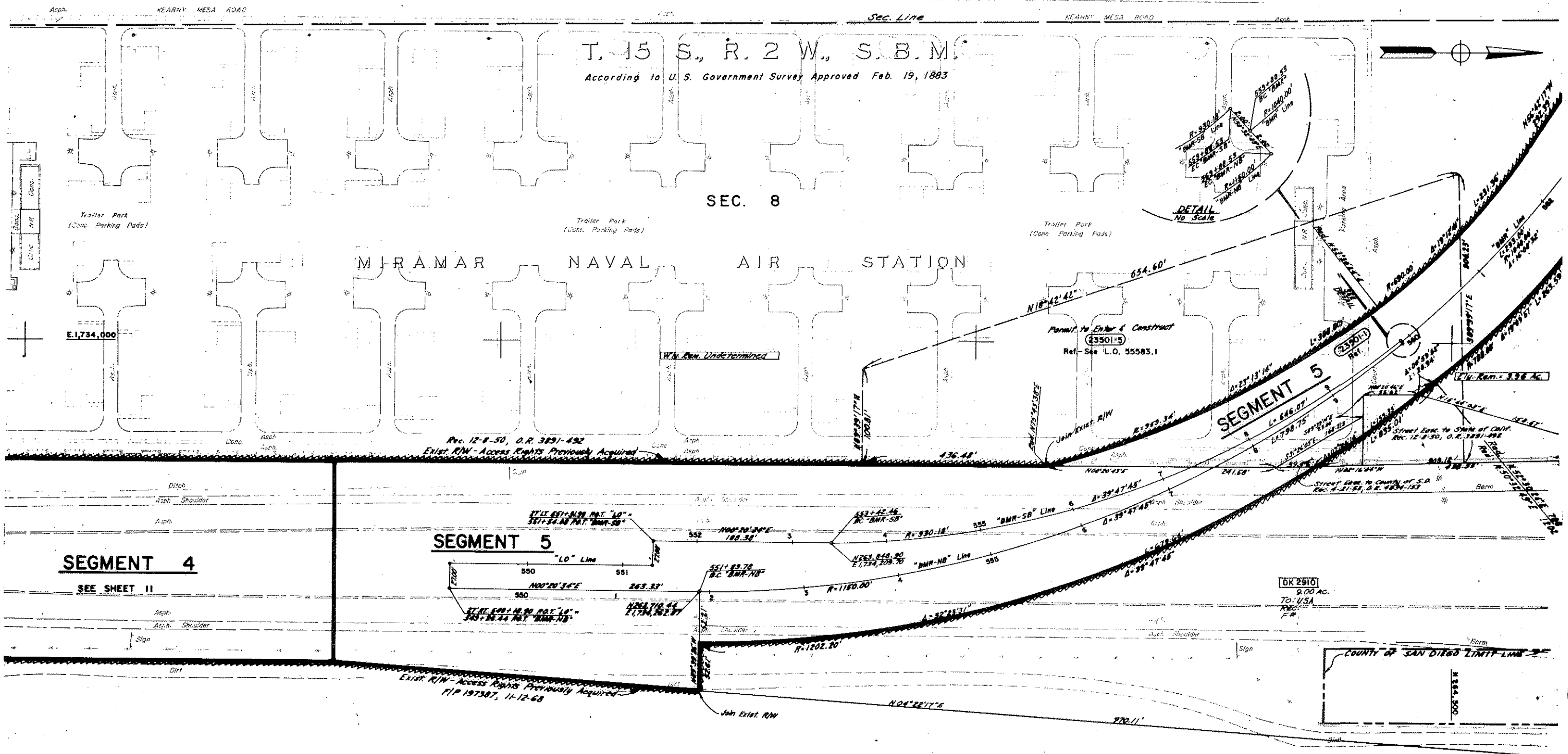
CITY OF SAN DIEGO

McBethcock  
DISTRICT RIGHT OF WAY ENGINEER, DISTRICT II, RCE 13042

T. 15 S., R. 2 W., S.B.M.  
According to U.S. Government Survey Approved Feb. 19, 1883

SEC. 8

MIRAMAR NAVAL AIR STATION



SEGMENT 4

SEE SHEET 11

SEGMENT 5

SEGMENT 5

COUNTY OF SAN DIEGO LIMIT LINE

STATE OF CALIFORNIA  
BUSINESS AND TRANSPORTATION AGENCY  
DEPARTMENT OF TRANSPORTATION  
DISTRICT II

RELINQUISHMENT  
MAP

55583

LEGEND & NOTES

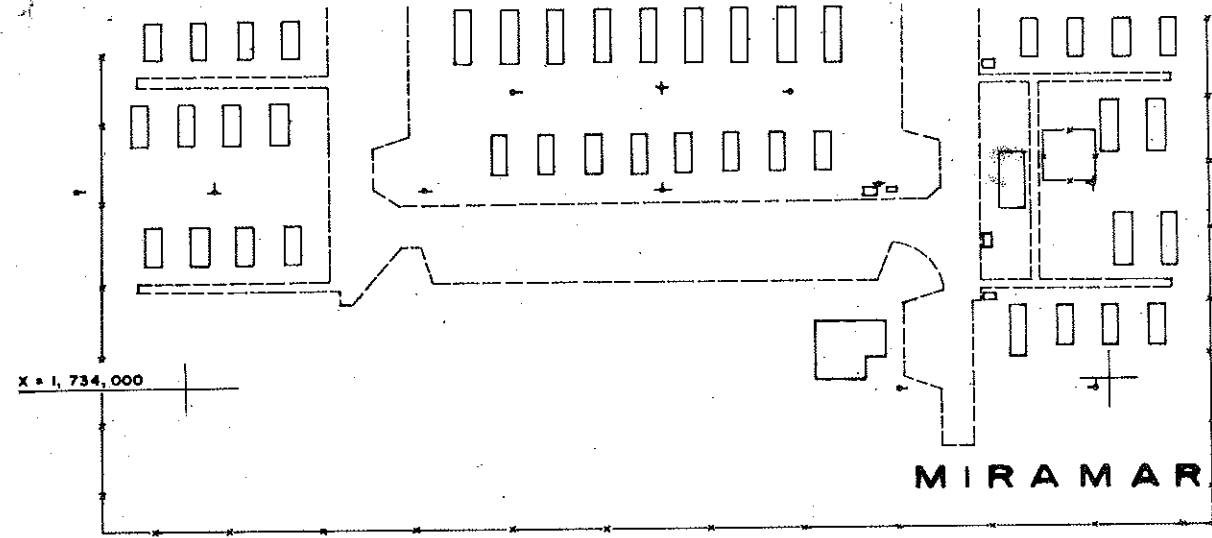
- Access Denied
- Area to be Relinquished
- Access Relinquished

RELINQUISHMENT NO.	24315
COUNTY ROUTE	SD 15
POST MILES	R13.1
SCALE	0 50'
SHEET 12 OF 14	

*Alfred Hethcock*  
DISTRICT RIGHT OF WAY ENGINEER, DISTRICT II, ACE 15042

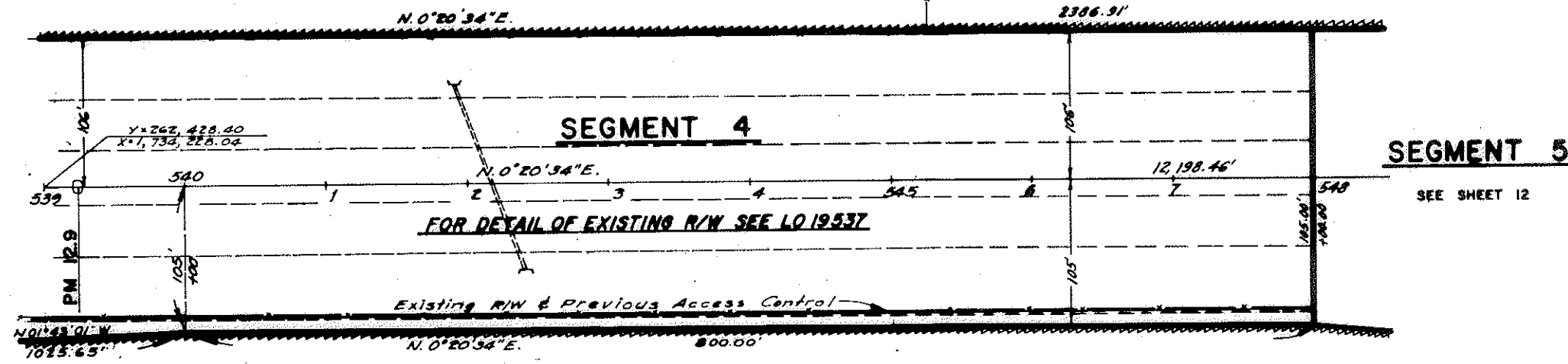
CITY OF SAN DIEGO

T.15S., R.2W., S.B.M.  
According to U.S. Government Survey Approved February 19, 1883



SEC. 8  
NW 1/4 of NW 1/4  
U.S.R.

1028.46'



STATE OF CALIFORNIA  
BUSINESS AND TRANSPORTATION AGENCY  
DEPARTMENT OF TRANSPORTATION  
DISTRICT II

RELINQUISHMENT  
MAP

19536.15

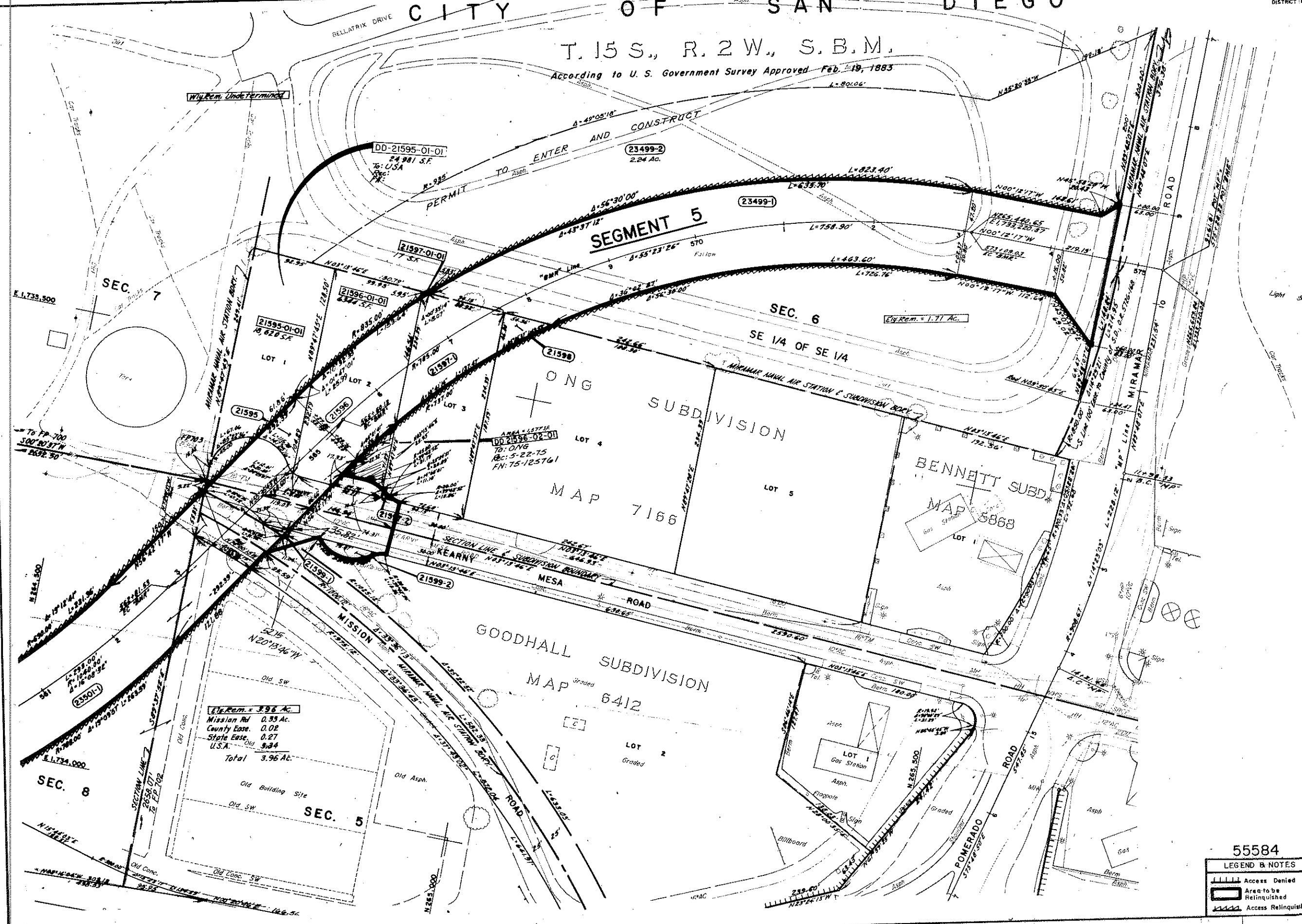
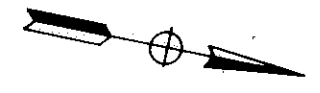
LEGEND & NOTES

-----	Access Denied
□	Area to be Relinquished
-----	Access Relinquished

RELINQUISHMENT NO.	24315
COUNTY ROUTE	SD-15
POST MILES	12.9
SCALE	1" = 80'
SHEET 11 OF 14	

CITY OF SAN DIEGO

T. 15 S., R. 2 W., S.B.M.  
 According to U. S. Government Survey Approved Feb. 19, 1883



STATE OF CALIFORNIA  
 BUSINESS AND TRANSPORTATION AGENCY  
 DEPARTMENT OF TRANSPORTATION  
 DISTRICT II

RELINQUISHMENT  
 MAP

55584

LEGEND & NOTES  
 [Symbol] Access Denied  
 [Symbol] Area to be Relinquished  
 [Symbol] Access Relinquished

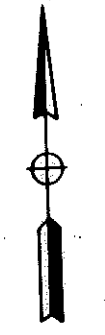
RELINQUISHMENT NO.	24315	
COUNTY ROUTE	POST MILES	SCALE:
SD 15	R13.4	0 80'
		SHEET 13 OF 14

# CITY OF SAN DIEGO

## T. 15 S., R. 2 W., S. B.M.

According to U. S. Government Survey Approved Feb. 19, 1883

*Alfred Satherck*  
DISTRICT RIGHT-OF-WAY ENGINEER, DISTRICT II, ACE 1044



4,891.000

**SEGMENT 3**  
SEE SHEET 9

MATCH LINE  
See Below

Permit to Enter & Construct  
**(21580-B)**  
Ref.- See L.O. 55576

W/4 Rem. 3 of 3 = 93.12 Ac.

SEC. 8  
SW 1/4

40' Gate Opening  
to Navy

**SEGMENT 6**

**(21580-I)**  
Ref.- See L.O. 55574

MIRAMAR WAY

Exist. R/W - Access Rd. Previously Acquired  
Change 3, Amend 1, 2, 3, 4, 5, 6, 7  
+14.91' N  
+14.51' N  
+14.51' N  
109.99' N00°20'34"E  
80.00'  
40.00'

N264,824.64  
21,734,843.55

S89°39'23"E

"M-W" Line

90.22'  
570°55'45"W

N87°32'38"W

Permit to Enter & Construct  
**(21580-II)**  
Ref.- See L.O. 55576

N 87° 32' 38" W 500.35'

N 83° 56' 04" W 351.00'

R=900.00'

A=29° 51' 02"

### MIRAMAR NAVAL AIR STATION

W/4 Rem. 2 of 3 = 340.35 Ac.

N 85° 58' 44" E 100.00'

N 27° 19' 29" E 210.74'

S11° 35' 07" E 592.64'

N 87° 19' 29" W 214.87'

N 87° 19' 29" W 18.87'

See Above  
MATCH LINE

STATE OF CALIFORNIA  
BUSINESS AND TRANSPORTATION AGENCY  
DEPARTMENT OF TRANSPORTATION  
DISTRICT II

### RELINQUISHMENT MAP

55579

LEGEND & NOTES

- Access Denied
- Area to be Relinquished
- Access Relinquished

RELINQUISHMENT NO.

**24315**

COUNTY ROUTE

POST MILES

SCALE

SD 15

R12.4

0 40'

SHEET 14 OF 14

# RANCHO MISSION SAN DIEGO

PARTITION MAP S.C.C. No 348

Lot 72

## CITY OF SAN DIEGO

**395** 4m 11.2

Dist	County	Volume	Section	Page
XI	SD	77	SD	41 23

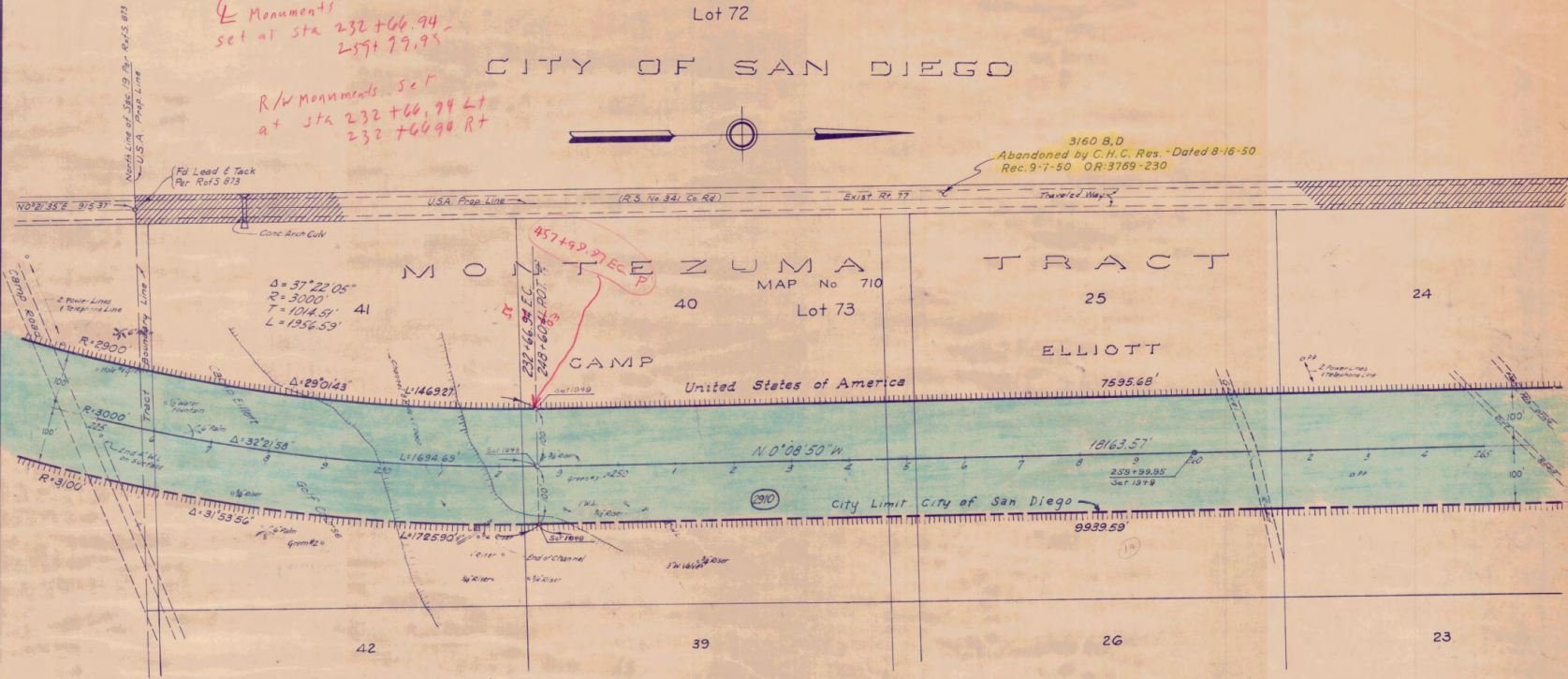
*W. Wallace*  
 San Diego, Calif. Civil Eng. License No. 626

Monuments set at sta 232+66.94 - 259+79.95

R/W Monuments set at sta 232+66.94 Lt 232+66.94 Rt



3160 B,D Abandoned by C.H.C. Res. Dated 8-16-50 Rec. 9-7-50 OR:3789-230



PAR. No.	GRANTOR	DATE	TYPE INST	SIGNED	DATE	RECORDED BOOK	PAGE	R/W FILE	REMARKS
2910	United States of America	7-15-49	E		11-8-50	12-8-50	OR:3891 492	2910	Access Rts.

RIGHT OF WAY MAP

SCALE 1" = 100'

# RANCHO MISSION SAN DIEGO

PARTITION MAP S.C.C. No 348

## CITY OF SAN DIEGO

Lot 72

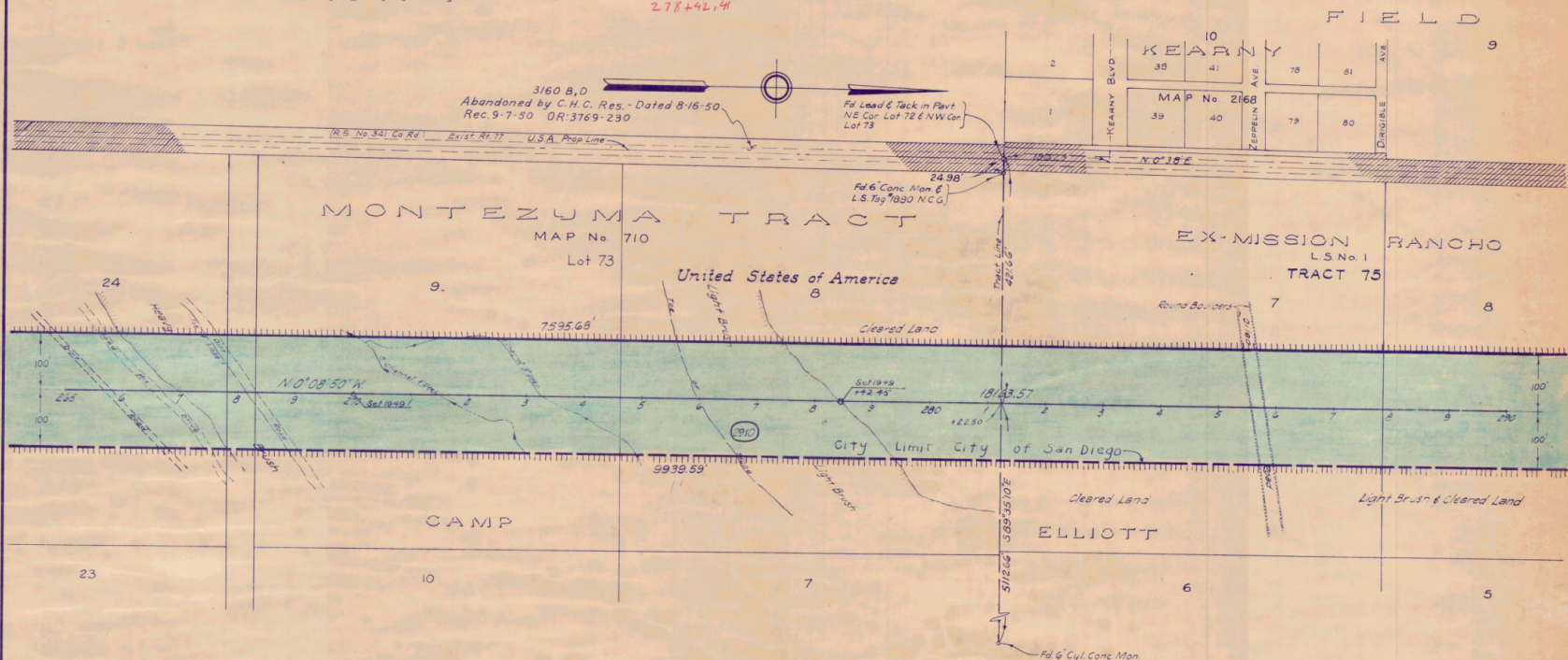
(Miramar)  
KEARNY

E Monuments  
Set at Sta 270+00.00  
278+42.94

**395** 10 17

Doc. No.	Book	Section	City	Tract
XI	SD	77	SD	12 23

*W. Wallace*  
Dist. Eng. Lic. No. 11000



PAR No.	GRANTOR	DATE	TYPE	INST	SIGNED	DATE	RECORDED BOOK	PAGE	R/W FILE	REMARKS
2910	United States of America	7-15-49	Revocable Permit	Approved by Navy Dept.		7-15-49		492	2910	Access Rts.
		11-8-50				12-8-50	OR:3891	492		

### RIGHT OF WAY MAP

SCALE 1" = 100'



CITY OF SAN DIEGO  
 T. 1 S., R. 2 W.  
 S. E. E. N.

RANCHO MISSION  
 SAN DIEGO  
 PARTITION MAP SEC. No 348

& Monuments  
 set at Sta 290+99.5  
 294+99.95  
 10+10.00  
 KEARNY

SEC 7

Lot 7

FIELD

3160 B, D  
 Abandoned by C.H.C. Res. Dated 8-16-50.  
 Rec. 9-7-50 OR-3769-230

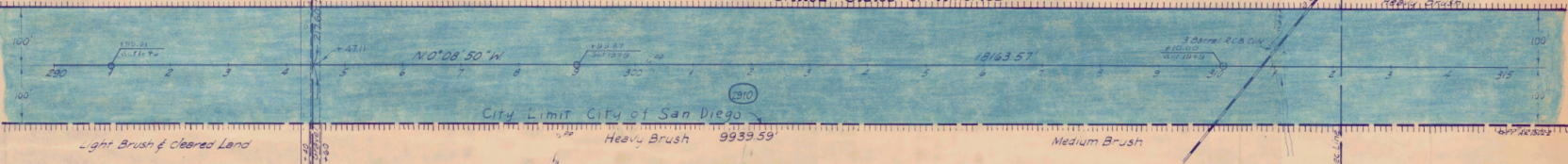
EX-MISSION RANCHO  
 TRACT 75  
 Lot 8

SEC 8

Lot 3

United States of America

N 1/2 SW 1/4



Light Brush & Cleared Land

City Limit City of San Diego

Heavy Brush 9939.59'

Medium Brush

Ingress & Egress Permitted  
 CAMP

ELLIOTT

PAR No.	GRANTOR	TYPE INST.	DATE SIGNED	DATE	RECORDED BOOK	PAGE	R/W FILE	REMARKS
2810	United States of America	Revocable Permit	11-8-50	12-8-50	OR:3891	492	2910	Access Hts. Approved by Navy Dept. Date 7-15-49

RIGHT OF WAY MAP

SCALE 1"=100'

LO-195-35

XI-SD-77-SD 13 of 23