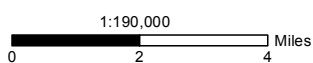


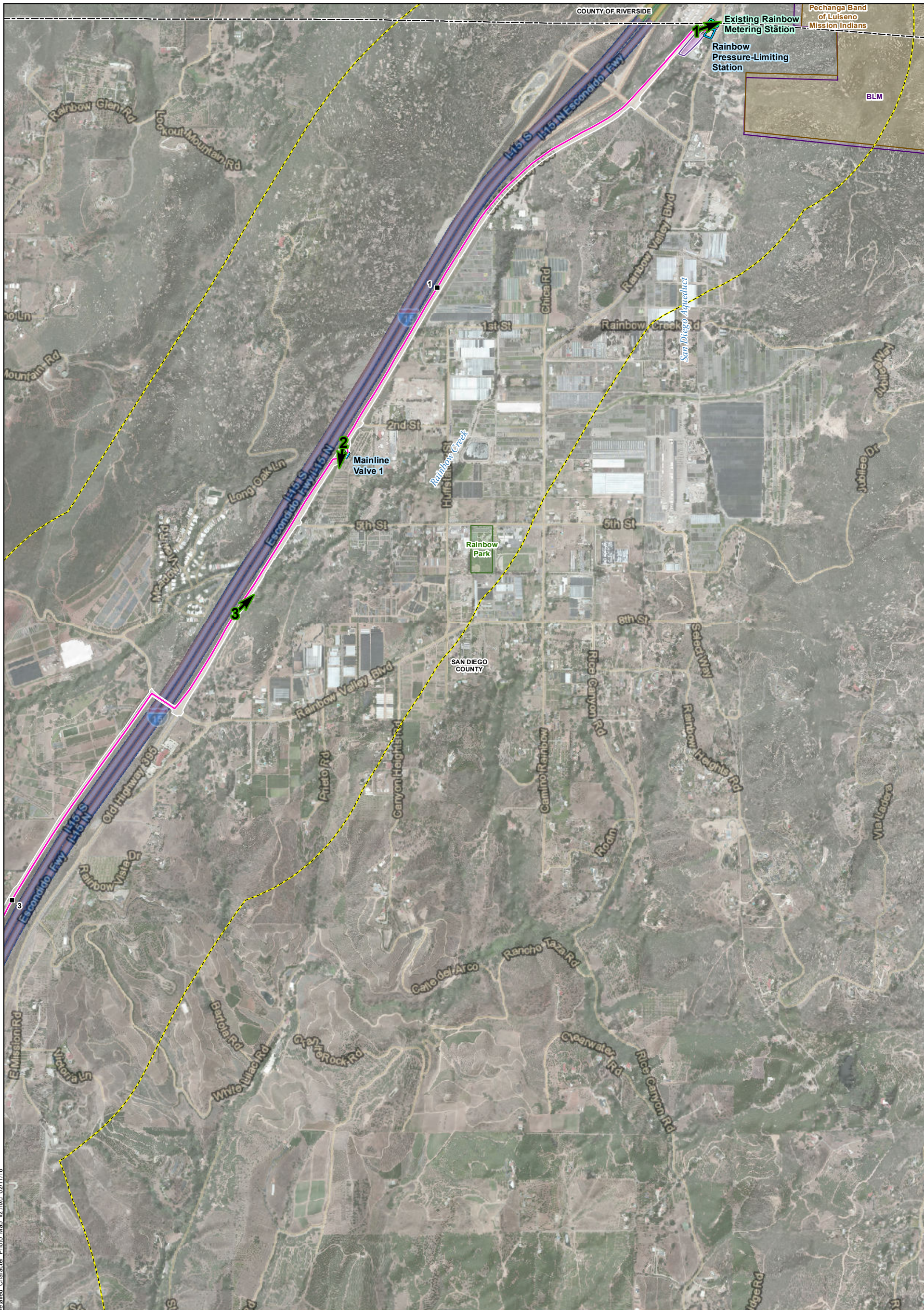
**Exhibit JJ-A: Response to 1.4.1-1  
Aesthetic Resources and Viewpoint Locations Overview Map**

**Pipeline Safety & Reliability Project**

- Proposed Project Route
- - - Trenchless Construction
- 0.5-Mile Project Buffer
- Mapbook Page Extent

- The information depicted in these maps is preliminary and subject to change based on California Public Utilities Commission requirements, final engineering, and other factors.  
 - I-15 is an Eligible State Scenic Highway between the Riverside County Line and State Route 76.



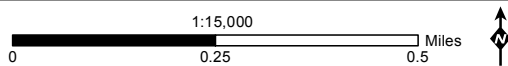


**Aesthetic Resources and Characterization Photograph Viewpoint Locations Map 1 of 15**

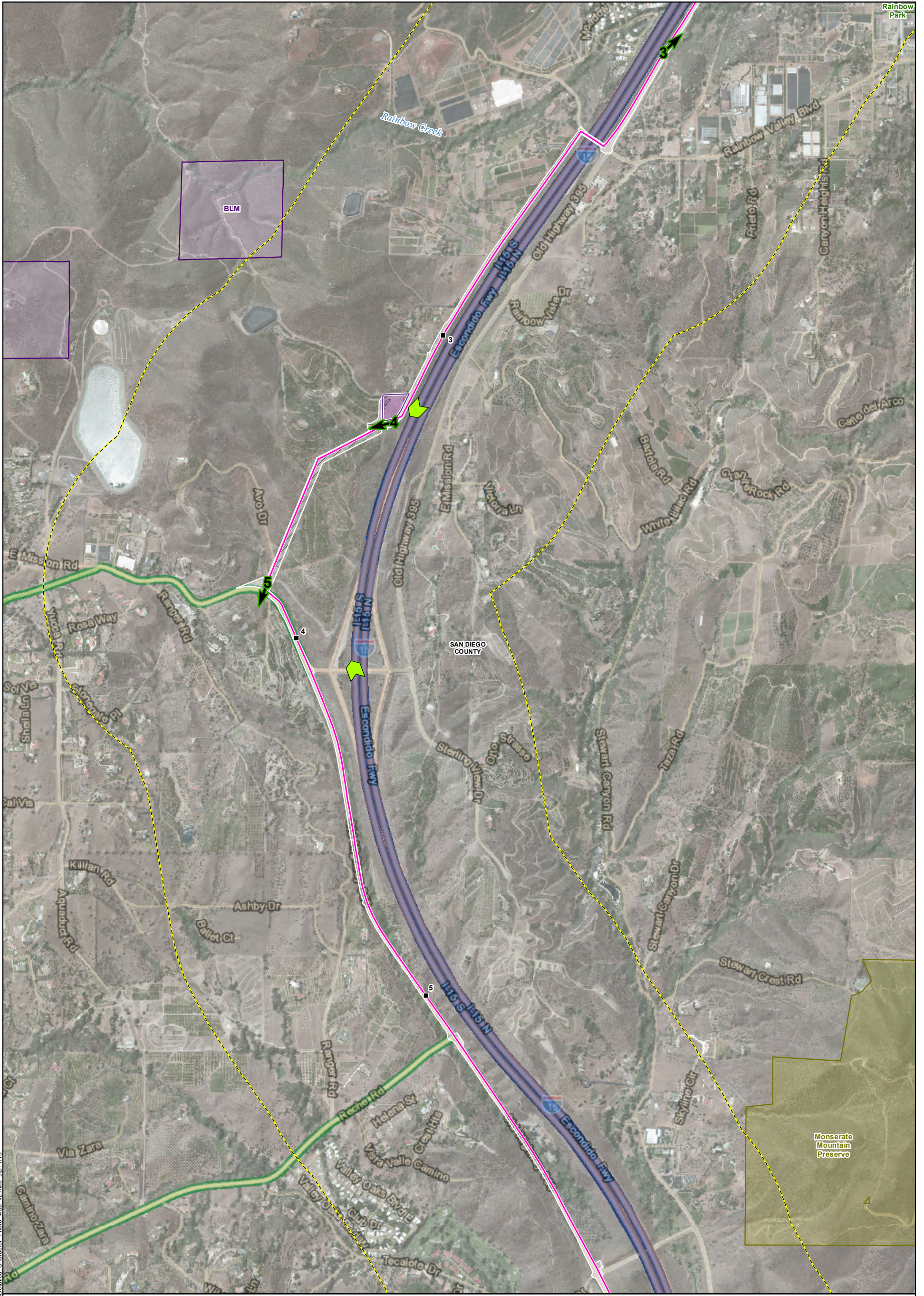
**Pipeline Safety & Reliability Project**

- |   |   |   |   |  |
|---|---|---|---|--|
| <ul style="list-style-type: none"> <li>■ Milepost</li> <li>□ City/County Boundary</li> <li>□ Existing Facility</li> </ul> | <ul style="list-style-type: none"> <li>— Permanent Proposed Project Route</li> <li>--- Trenchless Construction</li> <li>— Cross-Tie Connector Line</li> <li>□ Aboveground Facility</li> </ul> | <ul style="list-style-type: none"> <li>■ Temporary Bore Pit</li> <li>□ Horizontal Directional Drill Workspace</li> <li>□ Laydown Area</li> <li>□ Workspace</li> </ul> | <ul style="list-style-type: none"> <li>▲ Photo Location</li> <li>▲ Scenic Vista Location</li> <li>— County Designated Scenic Highway</li> <li>— State Eligible &amp; County Designated Scenic Highway</li> <li>□ Potential tree or large shrub removal</li> </ul> | <ul style="list-style-type: none"> <li>□ 0.5 -Mile Project Buffer</li> <li>□ Bureau of Indian Affairs</li> <li>□ CDFW Land</li> <li>□ City/County Park</li> <li>□ DOD</li> <li>□ NGO Park</li> <li>□ US Bureau of Land Management</li> </ul> |
|---|---|---|---|--|

- The information depicted in these maps is preliminary and subject to change based on California Public Utilities Commission requirements, final engineering, and other factors.  
 - I-15 is an Eligible State Scenic Highway between the Riverside County Line and State Route 76.



MXD:\FEAA\Aesthetics\Detailed Character Photo Map\_v2.mxd 02/11/16

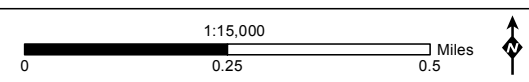


**Aesthetic Resources and Characterization Photograph Viewpoint Locations Map 2 of 15**

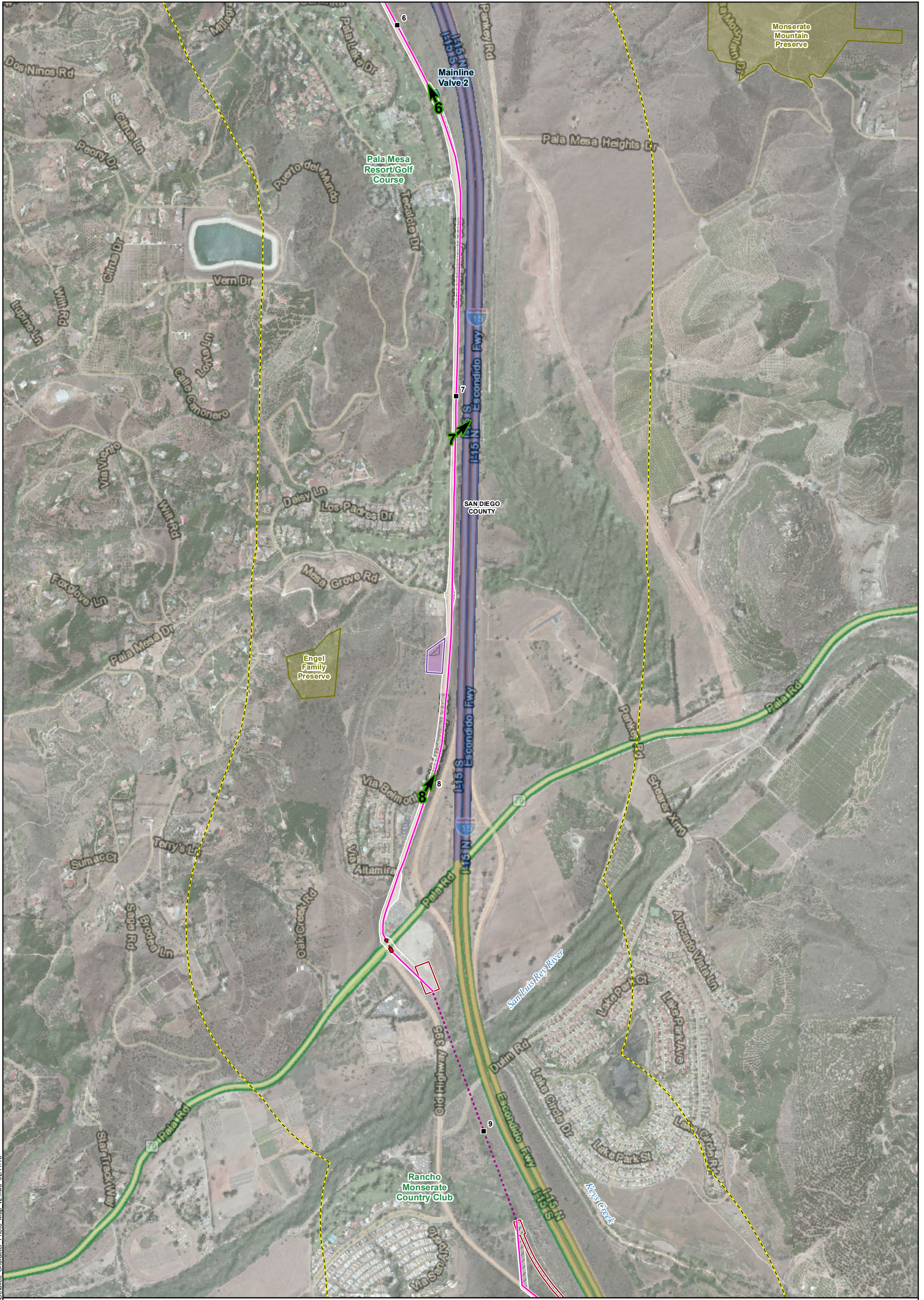
**Pipeline Safety & Reliability Project**

- |   |   |   |   |  |
|---|---|---|---|--|
| <ul style="list-style-type: none"> <li>■ Milepost</li> <li>□ City/County Boundary</li> <li>▭ Existing Facility</li> </ul> | <ul style="list-style-type: none"> <li>— Permanent Proposed Project Route</li> <li>- - - Trenchless Construction</li> <li>— Cross-Tie Connector Line</li> <li>▭ Aboveground Facility</li> </ul> | <ul style="list-style-type: none"> <li>■ Temporary Bore Pit</li> <li>▭ Horizontal Directional Drill Workspace</li> <li>▭ Laydown Area</li> <li>▭ Workspace</li> </ul> | <ul style="list-style-type: none"> <li>▲ Photo Location</li> <li>▲ Scenic Vista Location</li> <li>— County Designated Scenic Highway</li> <li>— State Eligible &amp; County Designated Scenic Highway</li> <li>▨ Potential tree or large shrub removal</li> </ul> | <ul style="list-style-type: none"> <li>▭ 0.5 -Mile Project Buffer</li> <li>▭ Bureau of Indian Affairs</li> <li>▭ CDFW Land</li> <li>▭ City/County Park</li> <li>▭ DOD</li> <li>▭ NGO Park</li> <li>▭ US Bureau of Land Management</li> </ul> |
|---|---|---|---|--|

- The information depicted in these maps is preliminary and subject to change based on California Public Utilities Commission requirements, final engineering, and other factors.  
 - I-15 is an Eligible State Scenic Highway between the Riverside County Line and State Route 76.



MXD:\FEAA\Aesthetics\Detailed Character Photo Map\_v2.mxd 02/11/16

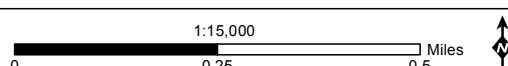


**Aesthetic Resources and Characterization Photograph Viewpoint Locations Map 3 of 15**

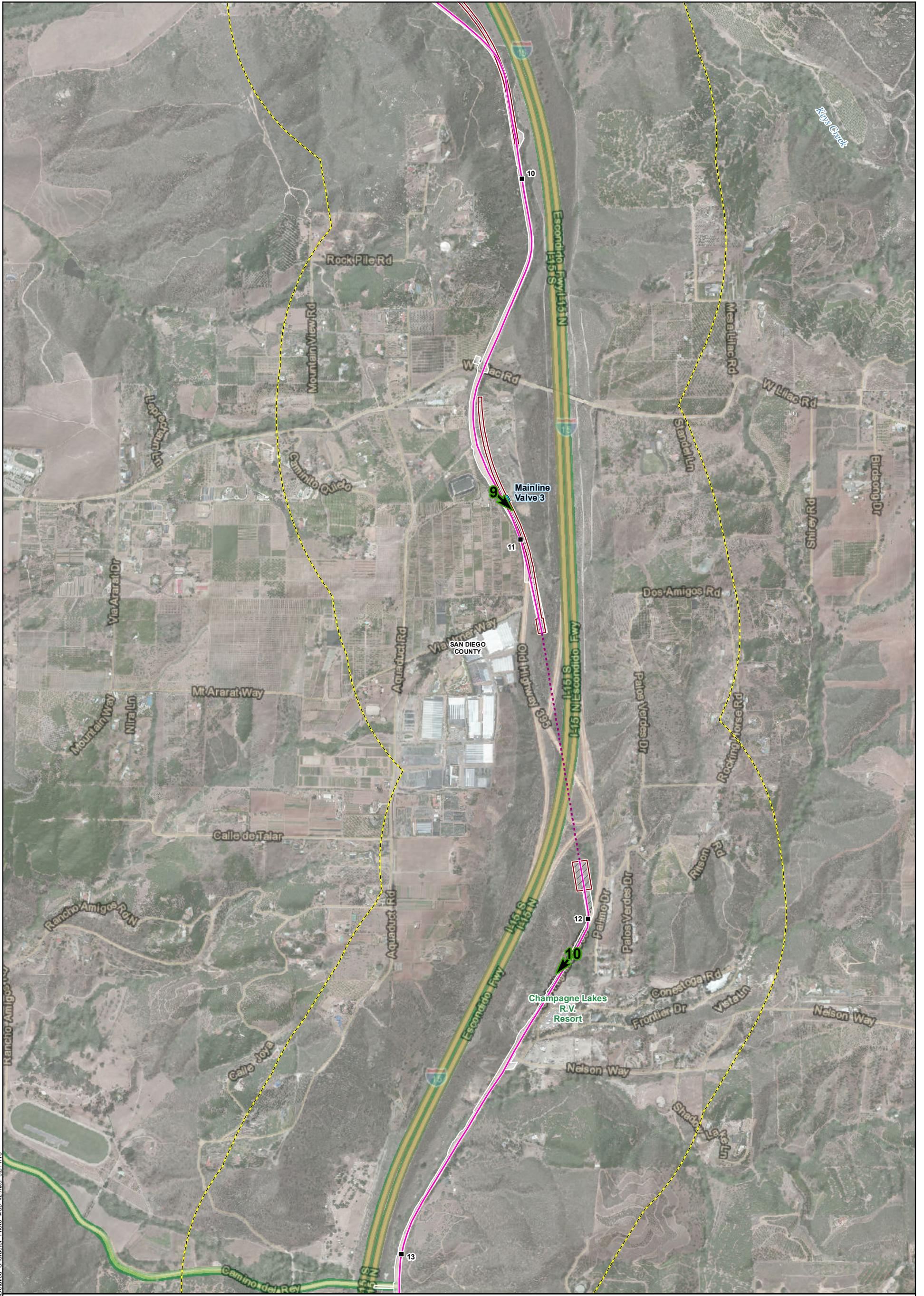
**Pipeline Safety & Reliability Project**

- |   |   |   |   |  |
|---|---|---|---|--|
| <ul style="list-style-type: none"> <li>■ Milepost</li> <li>□ City/County Boundary</li> <li>▭ Existing Facility</li> </ul> | <ul style="list-style-type: none"> <li>— Permanent Proposed Project Route</li> <li>--- Trenchless Construction</li> <li>— Cross-Tie Connector Line</li> <li>▭ Aboveground Facility</li> </ul> | <ul style="list-style-type: none"> <li>■ Temporary Bore Pit</li> <li>▭ Horizontal Directional Drill Workspace</li> <li>▭ Laydown Area</li> <li>▭ Workspace</li> </ul> | <ul style="list-style-type: none"> <li>▲ Photo Location</li> <li>▲ Scenic Vista Location</li> <li>— County Designated Scenic Highway</li> <li>— State Eligible &amp; County Designated Scenic Highway</li> <li>▨ Potential tree or large shrub removal</li> </ul> | <ul style="list-style-type: none"> <li>▭ 0.5 -Mile Project Buffer</li> <li>▭ Bureau of Indian Affairs</li> <li>▭ CDFW Land</li> <li>▭ City/County Park</li> <li>▭ DOD</li> <li>▭ NGO Park</li> <li>▭ US Bureau of Land Management</li> </ul> |
|---|---|---|---|--|

- The information depicted in these maps is preliminary and subject to change based on California Public Utilities Commission requirements, final engineering, and other factors.  
 - I-15 is an Eligible State Scenic Highway between the Riverside County Line and State Route 76.



MXD:\FEAA\Aesthetics\Detailed Character Photo Map\_v2.mxd 02/11/16

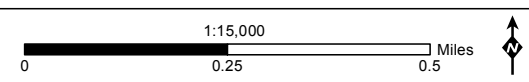


**Aesthetic Resources and Characterization Photograph Viewpoint Locations Map 4 of 15**

**Pipeline Safety & Reliability Project**

- |   |   |   |   |  |
|---|---|---|---|--|
| <ul style="list-style-type: none"> <li>■ Milepost</li> <li>□ City/County Boundary</li> <li>▭ Existing Facility</li> </ul> | <ul style="list-style-type: none"> <li>— Permanent Proposed Project Route</li> <li>- - - Trenchless Construction</li> <li>— Cross-Tie Connector Line</li> <li>▭ Aboveground Facility</li> </ul> | <ul style="list-style-type: none"> <li>■ Temporary Bore Pit</li> <li>▭ Horizontal Directional Drill Workspace</li> <li>▭ Laydown Area</li> <li>▭ Workspace</li> </ul> | <ul style="list-style-type: none"> <li>▲ Photo Location</li> <li>▲ Scenic Vista Location</li> <li>— County Designated Scenic Highway</li> <li>— State Eligible &amp; County Designated Scenic Highway</li> <li>▨ Potential tree or large shrub removal</li> </ul> | <ul style="list-style-type: none"> <li>▭ 0.5 -Mile Project Buffer</li> <li>▭ Bureau of Indian Affairs</li> <li>▭ CDFW Land</li> <li>▭ City/County Park</li> <li>▭ DOD</li> <li>▭ NGO Park</li> <li>▭ US Bureau of Land Management</li> </ul> |
|---|---|---|---|--|

- The information depicted in these maps is preliminary and subject to change based on California Public Utilities Commission requirements, final engineering, and other factors.  
 - I-15 is an Eligible State Scenic Highway between the Riverside County Line and State Route 76.



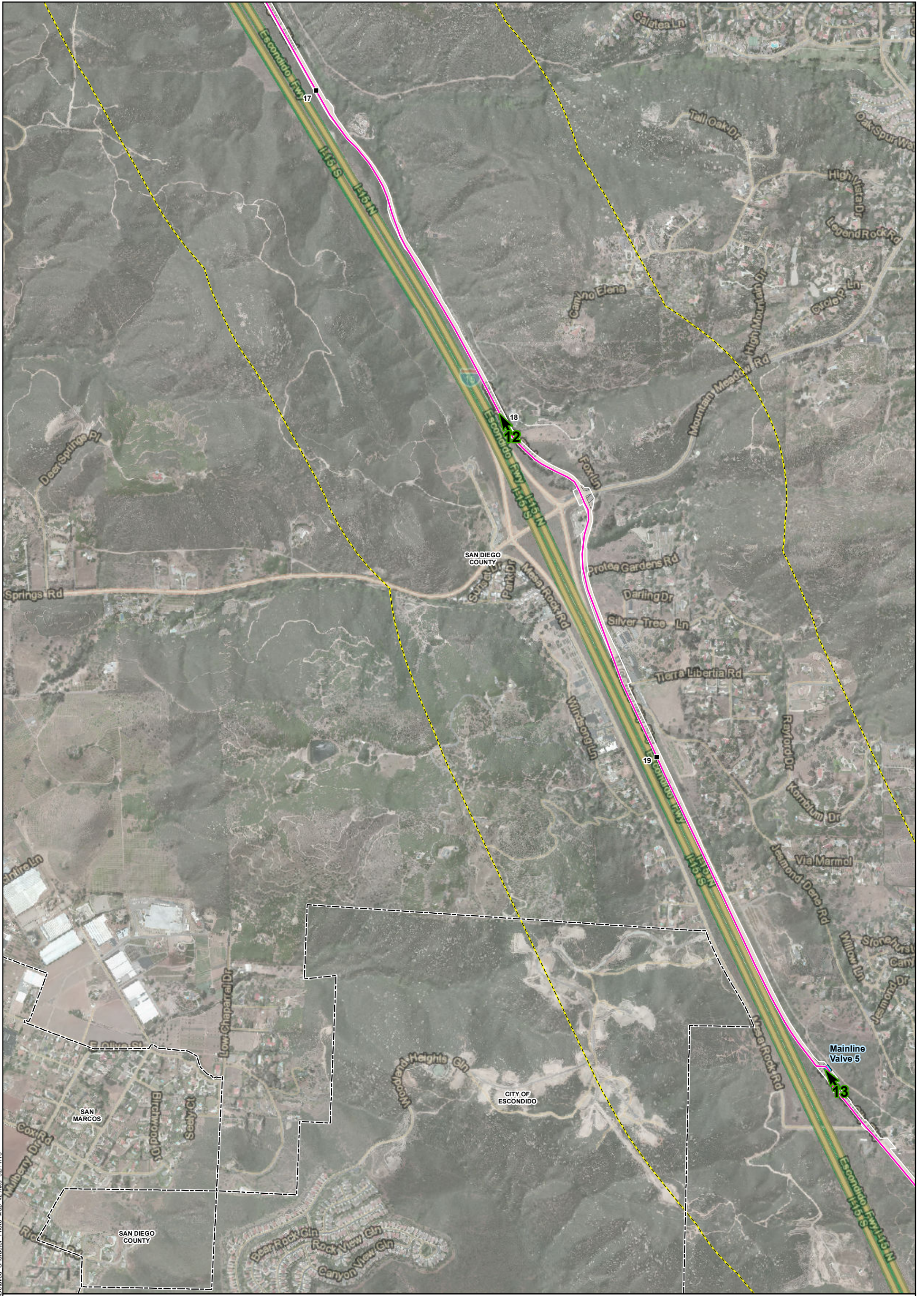
MXD:\FEAA\Aesthetics\Detailed Character Photo Map\_v2.mxd 02/11/16



**Aesthetic Resources and Characterization Photograph Viewpoint Locations Map 5 of 15** **Pipeline Safety & Reliability Project**

<ul style="list-style-type: none"> <li>■ Milepost</li> <li>□ City/County Boundary</li> <li>▭ Existing Facility</li> </ul>	<b>Permanent</b> <ul style="list-style-type: none"> <li>— Proposed Project Route</li> <li>- - - Trenchless Construction</li> <li>— Cross-Tie Connector Line</li> <li>▭ Aboveground Facility</li> </ul>	<b>Temporary</b> <ul style="list-style-type: none"> <li>■ Bore Pit</li> <li>▭ Horizontal Directional Drill Workspace</li> <li>▭ Laydown Area</li> <li>▭ Workspace</li> </ul>	<ul style="list-style-type: none"> <li>▲ Photo Location</li> <li>▲ Scenic Vista Location</li> <li>— County Designated Scenic Highway</li> <li>— State Eligible &amp; County Designated Scenic Highway</li> <li>▨ Potential tree or large shrub removal</li> </ul>	<ul style="list-style-type: none"> <li>▭ 0.5 -Mile Project Buffer</li> <li>▭ Bureau of Indian Affairs</li> <li>▭ CDFW Land</li> <li>▭ City/County Park</li> <li>▭ DOD</li> <li>▭ NGO Park</li> <li>▭ US Bureau of Land Management</li> </ul>
---	--	--	---	--

MXD:\FEAA\Aesthetics\Detailed Character Photo Map\_v2.mxd 02/11/16

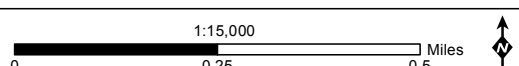


**Aesthetic Resources and Characterization Photograph Viewpoint Locations Map 6 of 15**

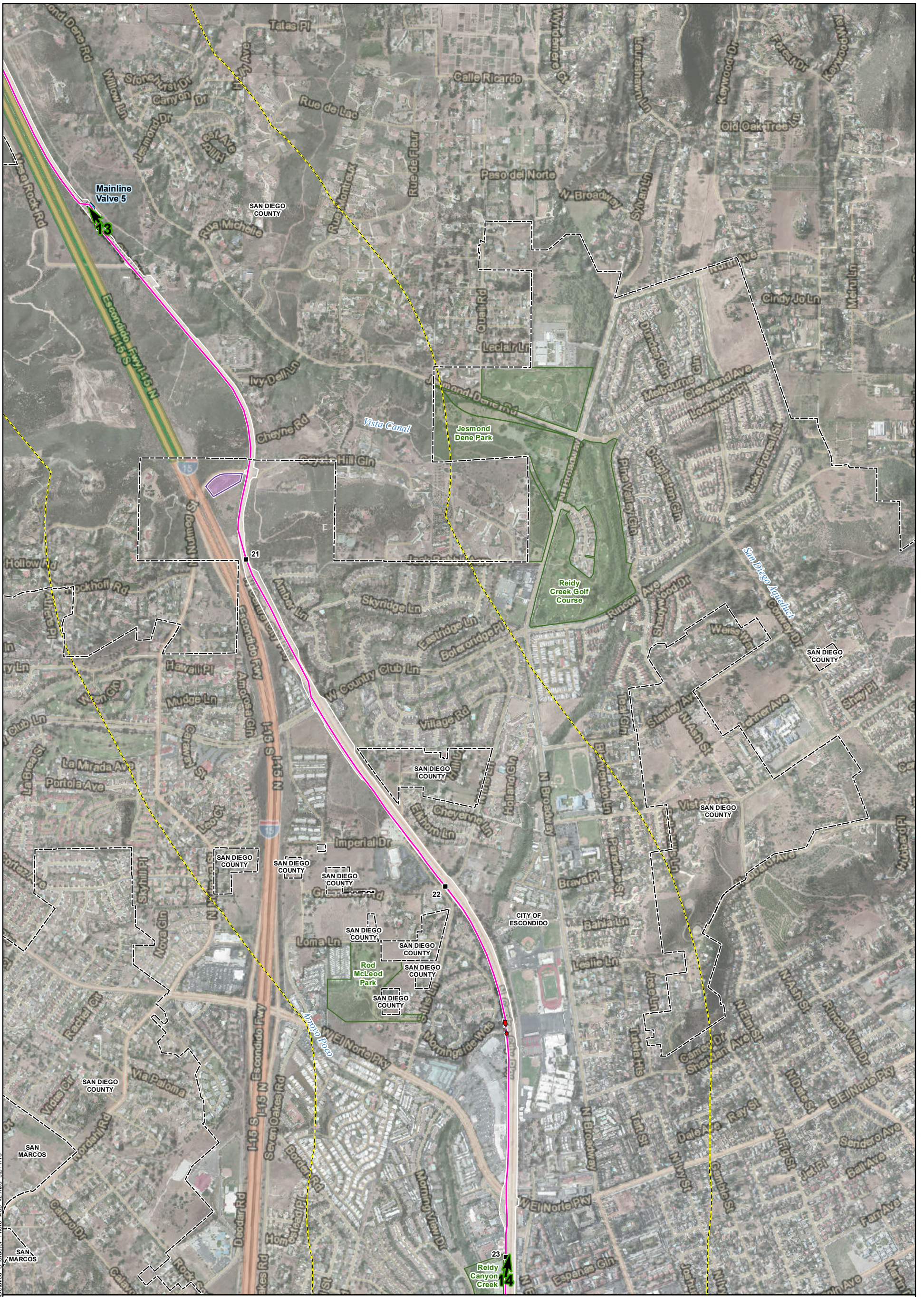
**Pipeline Safety & Reliability Project**

- |   |   |  |   |  |
|---|---|--|---|--|
| <ul style="list-style-type: none"> <li>■ Milepost</li> <li>□ City/County Boundary</li> <li>▭ Existing Facility</li> </ul> | <ul style="list-style-type: none"> <li>— Permanent Proposed Project Route</li> <li>- - - Trenchless Construction</li> <li>— Cross-Tie Connector Line</li> <li>▭ Aboveground Facility</li> </ul> | <ul style="list-style-type: none"> <li>■ Temporary Bore Pit</li> <li>▭ Horizontal Directional Drill Workspace</li> <li>▭ Laydown Area Workspace</li> </ul> | <ul style="list-style-type: none"> <li>▲ Photo Location</li> <li>■ Scenic Vista Location</li> <li>— County Designated Scenic Highway</li> <li>— State Eligible &amp; County Designated Scenic Highway</li> <li>▨ Potential tree or large shrub removal</li> </ul> | <ul style="list-style-type: none"> <li>▭ 0.5 -Mile Project Buffer</li> <li>▭ Bureau of Indian Affairs</li> <li>▭ CDFW Land</li> <li>▭ City/County Park</li> <li>▭ DOD</li> <li>▭ NGO Park</li> <li>▭ US Bureau of Land Management</li> </ul> |
|---|---|--|---|--|

- The information depicted in these maps is preliminary and subject to change based on California Public Utilities Commission requirements, final engineering, and other factors.  
 - 1-15 is an Eligible State Scenic Highway between the Riverside County Line and State Route 76.



MXD:\FEAA\Aesthetics\Detailed Character Photo Map\_v2.mxd 02/11/16

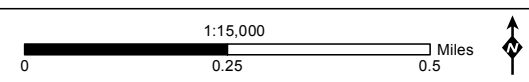


**Aesthetic Resources and Characterization Photograph Viewpoint Locations Map 7 of 15**

**Pipeline Safety & Reliability Project**

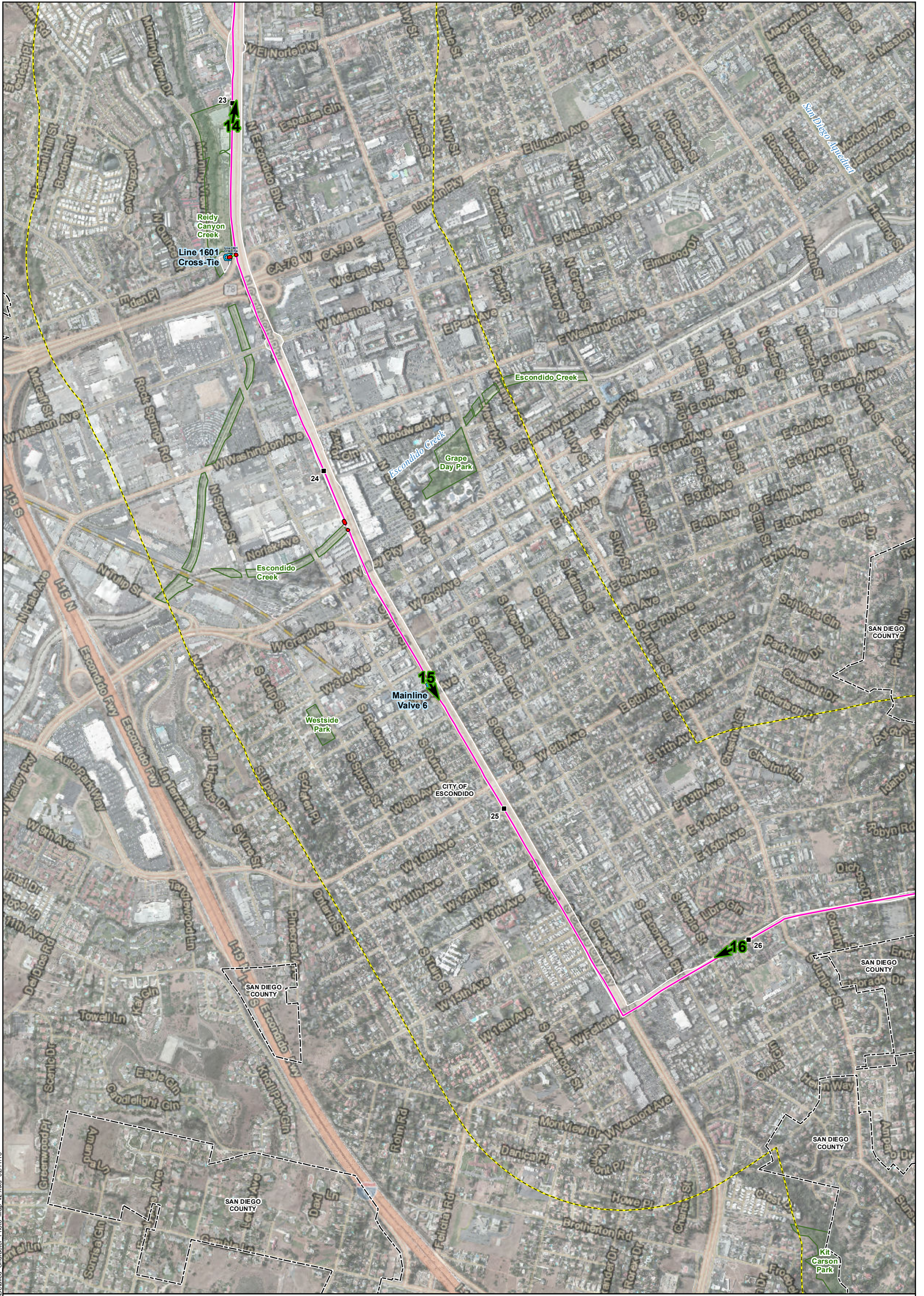
- |   |   |   |   |  |
|---|---|---|---|--|
| <ul style="list-style-type: none"> <li>■ Milepost</li> <li>□ City/County Boundary</li> <li>▭ Existing Facility</li> </ul> | <ul style="list-style-type: none"> <li>— Permanent Proposed Project Route</li> <li>--- Trenchless Construction</li> <li>— Cross-Tie Connector Line</li> <li>▭ Aboveground Facility</li> </ul> | <ul style="list-style-type: none"> <li>■ Temporary Bore Pit</li> <li>▭ Horizontal Directional Drill Workspace</li> <li>▭ Laydown Area</li> <li>▭ Workspace</li> </ul> | <ul style="list-style-type: none"> <li>▲ Photo Location</li> <li>▲ Scenic Vista Location</li> <li>▭ County Designated Scenic Highway</li> <li>▭ State Eligible &amp; County Designated Scenic Highway</li> <li>▭ Potential tree or large shrub removal</li> </ul> | <ul style="list-style-type: none"> <li>▭ 0.5 -Mile Project Buffer</li> <li>▭ Bureau of Indian Affairs</li> <li>▭ CDFW Land</li> <li>▭ City/County Park</li> <li>▭ DOD</li> <li>▭ NGO Park</li> <li>▭ US Bureau of Land Management</li> </ul> |
|---|---|---|---|--|

- The information depicted in these maps is preliminary and subject to change based on California Public Utilities Commission requirements, final engineering, and other factors.  
 - I-15 is an Eligible State Scenic Highway between the Riverside County Line and State Route 76.



MXD:\PE\AA\Aesthetics\Detailed Character Photo Map\_v2.mxd 02/11/16



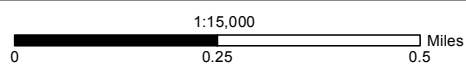


**Aesthetic Resources and Characterization Photograph Viewpoint Locations Map 8 of 15**

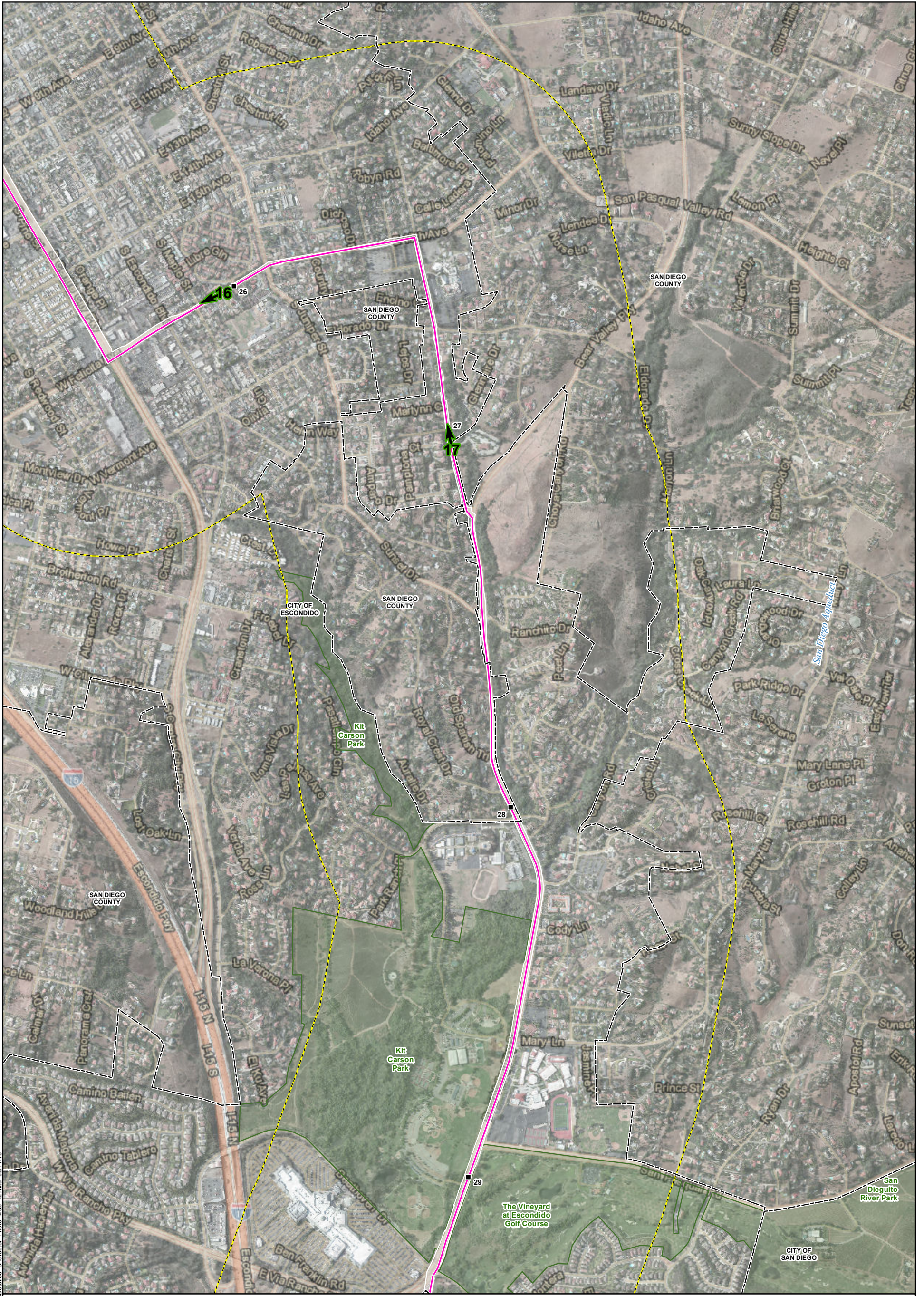
**Pipeline Safety & Reliability Project**

- |   |   |   |   |  |
|---|---|---|---|--|
| <ul style="list-style-type: none"> <li>■ Milepost</li> <li>□ City/County Boundary</li> <li>▭ Existing Facility</li> </ul> | <ul style="list-style-type: none"> <li>— Proposed Project Route</li> <li>- - - Trenchless Construction</li> <li>— Cross-Tie Connector Line</li> <li>▭ Aboveground Facility</li> </ul> | <ul style="list-style-type: none"> <li>■ Temporary</li> <li>■ Bore Pit</li> <li>▭ Horizontal Directional Drill</li> <li>▭ Workspace</li> <li>▭ Laydown Area</li> <li>▭ Workspace</li> </ul> | <ul style="list-style-type: none"> <li>▲ Photo Location</li> <li>▲ Scenic Vista Location</li> <li>▭ County Designated Scenic Highway</li> <li>▭ State Eligible &amp; County Designated Scenic Highway</li> <li>▭ Potential tree or large shrub removal</li> </ul> | <ul style="list-style-type: none"> <li>▭ 0.5 -Mile Project Buffer</li> <li>▭ Bureau of Indian Affairs</li> <li>▭ CDFW Land</li> <li>▭ City/County Park</li> <li>▭ DOD</li> <li>▭ NGO Park</li> <li>▭ US Bureau of Land Management</li> </ul> |
|---|---|---|---|--|

- The information depicted in these maps is preliminary and subject to change based on California Public Utilities Commission requirements, final engineering, and other factors.  
 - 1-15 is an Eligible State Scenic Highway between the Riverside County Line and State Route 76.



MXD:\FEAA\Aesthetics\Detailed Character Photo Map\_v2.mxd 02/11/16

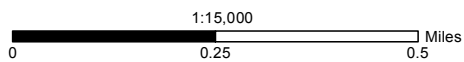


**Aesthetic Resources and Characterization Photograph Viewpoint Locations Map 9 of 15**

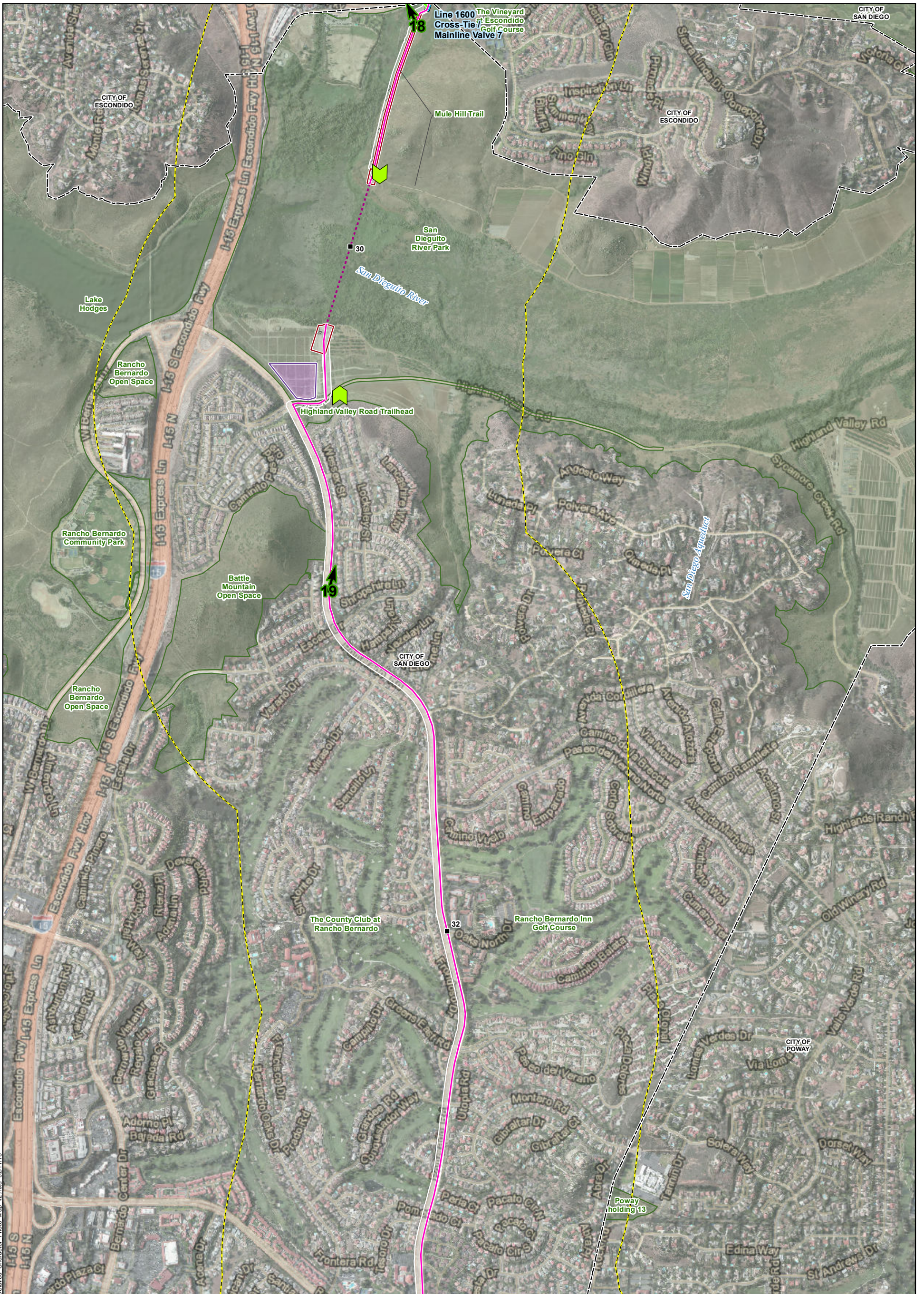
**Pipeline Safety & Reliability Project**

- |   |   |   |   |  |  |
|---|---|---|---|--|--|
| <ul style="list-style-type: none"> <li>■ Milepost</li> <li>□ City/County Boundary</li> <li>□ Existing Facility</li> </ul> | <ul style="list-style-type: none"> <li>— Permanent Proposed Project Route</li> <li>— Trenchless Construction</li> <li>— Cross-Tie Connector Line</li> <li>— Aboveground Facility</li> </ul> | <ul style="list-style-type: none"> <li>■ Temporary Bore Pit</li> <li>□ Horizontal Directional Drill Workspace</li> <li>□ Laydown Area</li> <li>□ Workspace</li> </ul> | <ul style="list-style-type: none"> <li>▲ Photo Location</li> <li>▲ Scenic Vista Location</li> <li>— County Designated Scenic Highway</li> <li>— State Eligible &amp; County Designated Scenic Highway</li> <li>□ Potential tree or large shrub removal</li> </ul> | <ul style="list-style-type: none"> <li>□ 0.5 -Mile Project Buffer</li> <li>□ Bureau of Indian Affairs</li> <li>□ CDFW Land</li> <li>□ City/County Park</li> <li>□ DOD</li> <li>□ NGO Park</li> <li>□ US Bureau of Land Management</li> </ul> |  |
|---|---|---|---|--|--|

- The information depicted in these maps is preliminary and subject to change based on California Public Utilities Commission requirements, final engineering, and other factors.  
 - I-15 is an Eligible State Scenic Highway between the Riverside County Line and State Route 76.



MXD:\FEAA\Aesthetics\Detailed Character Photo Map\_v2.mxd 02/11/16

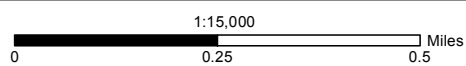


**Aesthetic Resources and Characterization Photograph Viewpoint Locations Map 10 of 15**

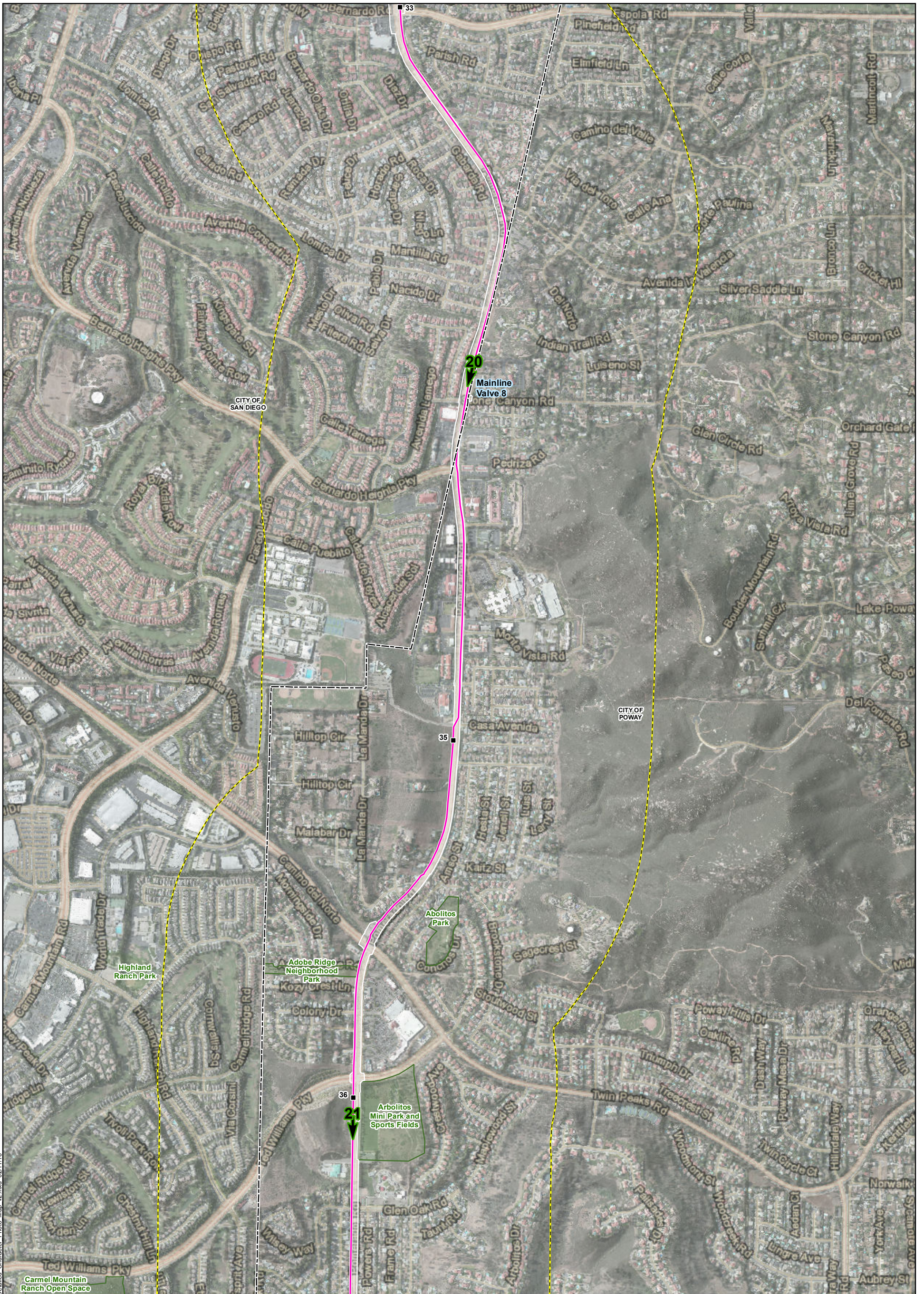
**Pipeline Safety & Reliability Project**

- |   |   |   |   |  |
|---|---|---|---|--|
| <ul style="list-style-type: none"> <li>■ Milepost</li> <li>□ City/County Boundary</li> <li>□ Existing Facility</li> </ul> | <ul style="list-style-type: none"> <li>— Permanent Proposed Project Route</li> <li>--- Trenchless Construction</li> <li>— Cross-Tie Connector Line</li> <li>□ Aboveground Facility</li> </ul> | <ul style="list-style-type: none"> <li>■ Temporary Bore Pit</li> <li>□ Horizontal Directional Drill Workspace</li> <li>□ Laydown Area</li> <li>□ Workspace</li> </ul> | <ul style="list-style-type: none"> <li>▲ Photo Location</li> <li>▲ Scenic Vista Location</li> <li>— County Designated Scenic Highway</li> <li>— State Eligible &amp; County Designated Scenic Highway</li> <li>□ Potential tree or large shrub removal</li> </ul> | <ul style="list-style-type: none"> <li>□ 0.5 -Mile Project Buffer</li> <li>□ Bureau of Indian Affairs</li> <li>□ CDFW Land</li> <li>□ City/County Park</li> <li>□ DOD</li> <li>□ NGO Park</li> <li>□ US Bureau of Land Management</li> </ul> |
|---|---|---|---|--|

- The information depicted in these maps is preliminary and subject to change based on California Public Utilities Commission requirements, final engineering, and other factors.  
 - I-15 is an Eligible State Scenic Highway between the Riverside County Line and State Route 76.



MXD:\FEAA\Aesthetics\Detailed Character Photo Map\_v2.mxd 02/11/16

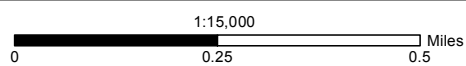


**Aesthetic Resources and Characterization Photograph Viewpoint Locations Map 11 of 15**

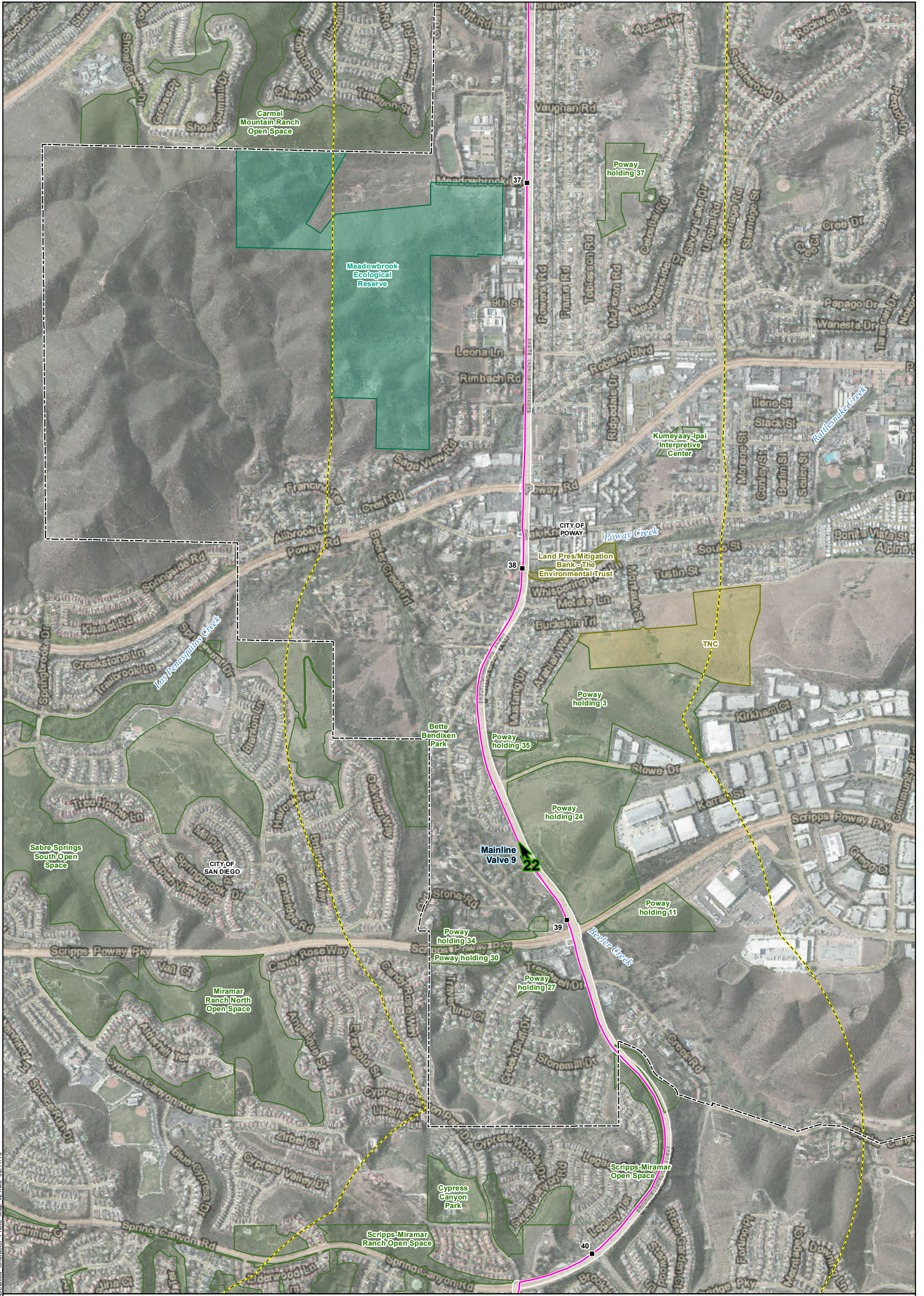
**Pipeline Safety & Reliability Project**

- |   |   |  |   |  |
|---|---|--|---|--|
| <ul style="list-style-type: none"> <li>■ Milepost</li> <li>□ City/County Boundary</li> <li>□ Existing Facility</li> </ul> | <ul style="list-style-type: none"> <li>— Permanent Proposed Project Route</li> <li>— Trenchless Construction</li> <li>— Cross-Tie Connector Line</li> <li>— Aboveground Facility</li> </ul> | <ul style="list-style-type: none"> <li>■ Temporary Bore Pit</li> <li>□ Horizontal Directional Drill</li> <li>□ Workspace</li> <li>□ Laydown Area</li> <li>□ Workspace</li> </ul> | <ul style="list-style-type: none"> <li>▲ Photo Location</li> <li>▲ Scenic Vista Location</li> <li>— County Designated Scenic Highway</li> <li>— State Eligible &amp; County Designated Scenic Highway</li> <li>— Potential tree or large shrub removal</li> </ul> | <ul style="list-style-type: none"> <li>□ 0.5 -Mile Project Buffer</li> <li>□ Bureau of Indian Affairs</li> <li>□ CDFW Land</li> <li>□ City/County Park</li> <li>□ DOD</li> <li>□ NGO Park</li> <li>□ US Bureau of Land Management</li> </ul> |
|---|---|--|---|--|

- The information depicted in these maps is preliminary and subject to change based on California Public Utilities Commission requirements, final engineering, and other factors.  
 - 1-15 is an Eligible State Scenic Highway between the Riverside County Line and State Route 76.



MXD:\FEAA\Aesthetics\Detailed Character Photo Map\_v2.mxd 02/11/16

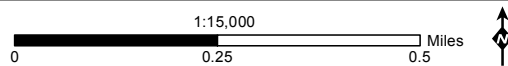


**Aesthetic Resources and Characterization Photograph Viewpoint Locations Map 12 of 15**

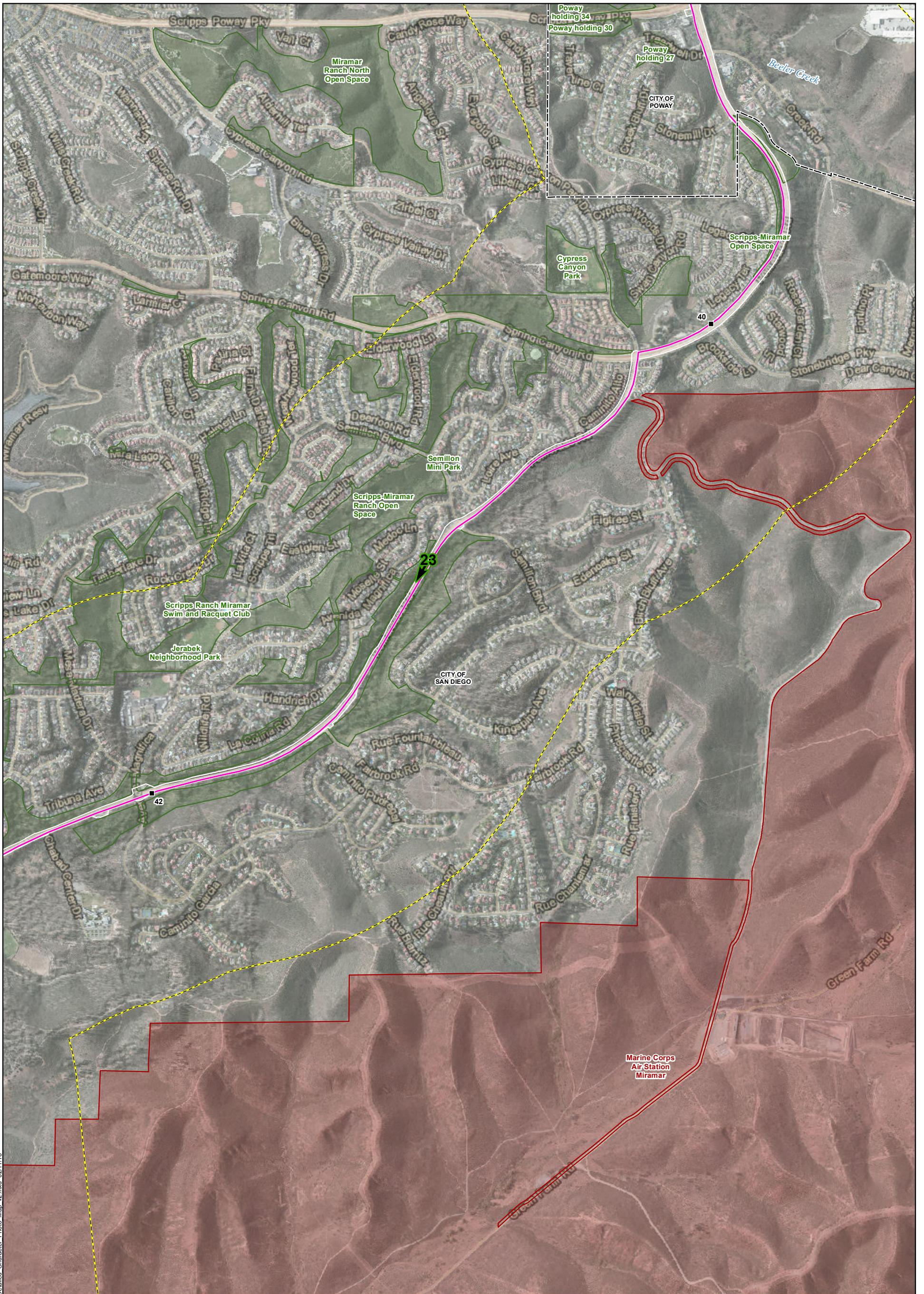
**Pipeline Safety & Reliability Project**

- |   |   |   |   |  |
|---|---|---|---|--|
| <ul style="list-style-type: none"> <li>■ Milepost</li> <li>□ City/County Boundary</li> <li>□ Existing Facility</li> </ul> | <ul style="list-style-type: none"> <li>— Proposed Project Route</li> <li>- - - Trenchless Construction</li> <li>— Cross-Tie Connector Line</li> <li>□ Aboveground Facility</li> </ul> | <ul style="list-style-type: none"> <li>■ Temporary</li> <li>■ Bore Pit</li> <li>□ Horizontal Directional Drill</li> <li>□ Workspace</li> <li>□ Laydown Area</li> <li>□ Workspace</li> </ul> | <ul style="list-style-type: none"> <li>▲ Photo Location</li> <li>▲ Scenic Vista Location</li> <li>— County Designated Scenic Highway</li> <li>— State Eligible &amp; County Designated Scenic Highway</li> <li>□ Potential tree or large shrub removal</li> </ul> | <ul style="list-style-type: none"> <li>□ 0.5 -Mile Project Buffer</li> <li>□ Bureau of Indian Affairs</li> <li>□ CDFW Land</li> <li>□ City/County Park</li> <li>□ DOD</li> <li>□ NGO Park</li> <li>□ US Bureau of Land Management</li> </ul> |
|---|---|---|---|--|

- The information depicted in these maps is preliminary and subject to change based on California Public Utilities Commission requirements, final engineering, and other factors.  
 - 1-15 is an Eligible State Scenic Highway between the Riverside County Line and State Route 76.



MXD:\FEAA\Aesthetics\Detailed Character Photo Map\_v2.mxd 02/11/16

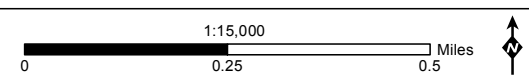


**Aesthetic Resources and Characterization Photograph Viewpoint Locations Map 13 of 15**

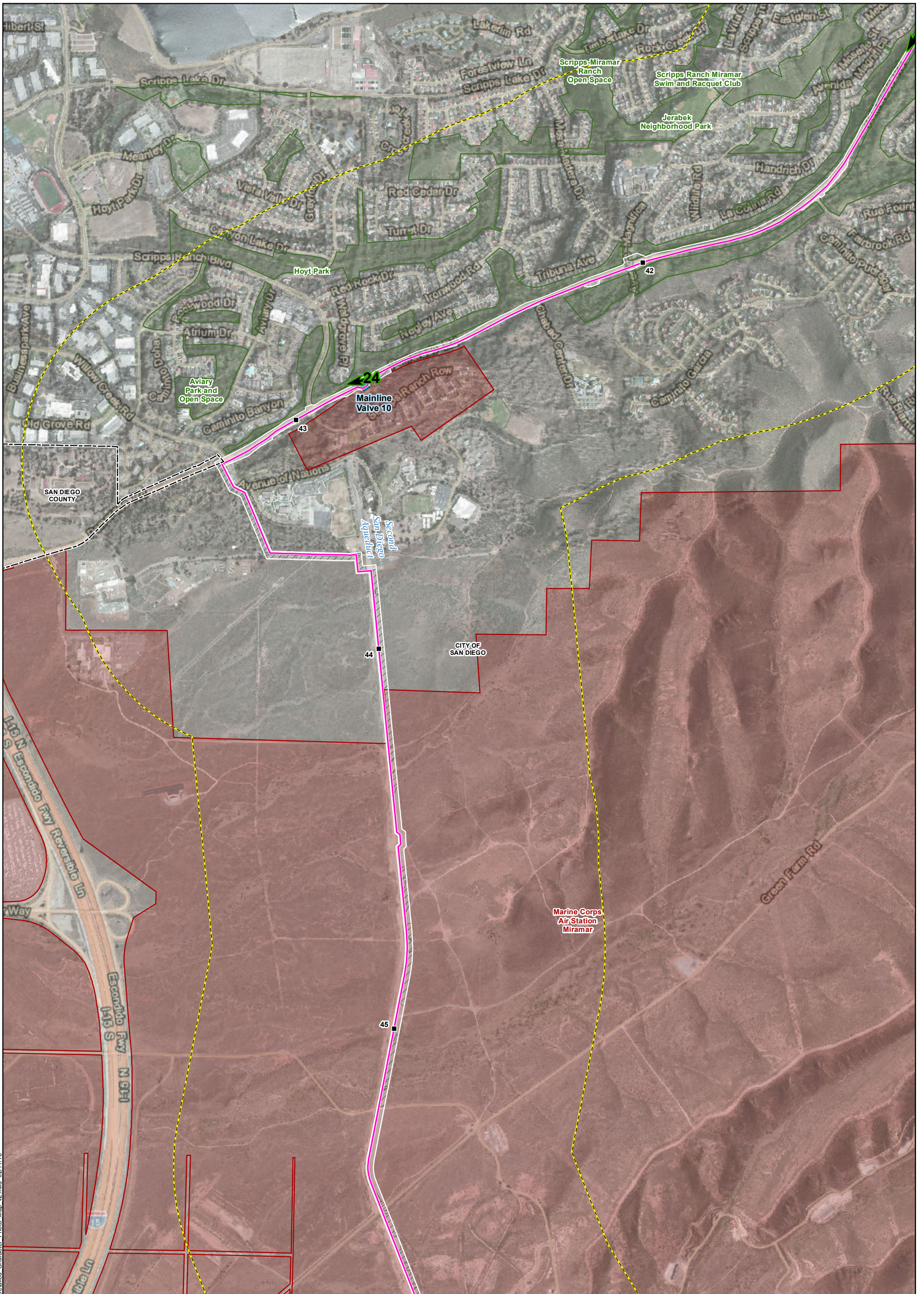
**Pipeline Safety & Reliability Project**

- |   |  |   |   |  |
|---|--|---|---|--|
| <ul style="list-style-type: none"> <li>■ Milepost</li> <li>□ City/County Boundary</li> <li>▭ Existing Facility</li> </ul> | <ul style="list-style-type: none"> <li>— Permanent</li> <li>— Proposed Project Route</li> <li>— Trenchless Construction</li> <li>— Cross-Tie Connector Line</li> <li>— Aboveground Facility</li> </ul> | <ul style="list-style-type: none"> <li>— Temporary</li> <li>— Bore Pit</li> <li>— Horizontal Directional Drill</li> <li>— Workspace</li> <li>— Laydown Area</li> <li>— Workspace</li> </ul> | <ul style="list-style-type: none"> <li>▲ Photo Location</li> <li>▲ Scenic Vista Location</li> <li>— County Designated Scenic Highway</li> <li>— State Eligible &amp; County Designated Scenic Highway</li> <li>▨ Potential tree or large shrub removal</li> </ul> | <ul style="list-style-type: none"> <li>▭ 0.5 -Mile Project Buffer</li> <li>▭ Bureau of Indian Affairs</li> <li>▭ CDFW Land</li> <li>▭ City/County Park</li> <li>▭ DOD</li> <li>▭ NGO Park</li> <li>▭ US Bureau of Land Management</li> </ul> |
|---|--|---|---|--|

- The information depicted in these maps is preliminary and subject to change based on California Public Utilities Commission requirements, final engineering, and other factors.  
 - 1-15 is an Eligible State Scenic Highway between the Riverside County Line and State Route 76.



MXDs\PEAA\Aesthetics\Detailed Character Photo Map\_v2.mxd 02/11/16

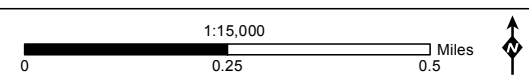


**Aesthetic Resources and Characterization Photograph Viewpoint Locations Map 14 of 15**

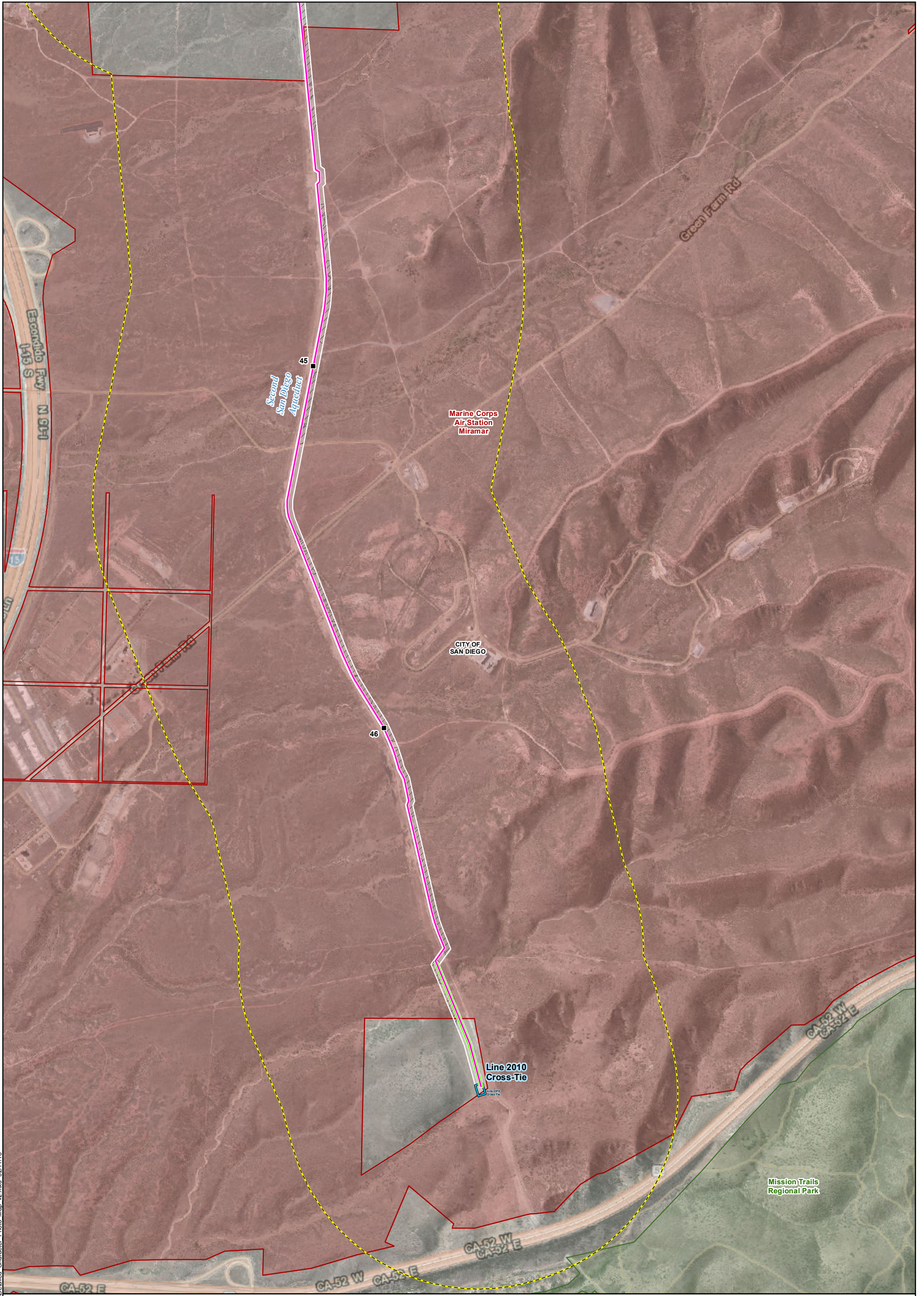
**Pipeline Safety & Reliability Project**

<ul style="list-style-type: none"> <li>■ Milepost</li> <li>□ City/County Boundary</li> <li>▭ Existing Facility</li> </ul>	<ul style="list-style-type: none"> <li>— Permanent Proposed Project Route</li> <li>--- Trenchless Construction</li> <li>— Cross-Tie Connector Line</li> <li>▭ Aboveground Facility</li> </ul>	<ul style="list-style-type: none"> <li>■ Temporary Bore Pit</li> <li>▭ Horizontal Directional Drill Workspace</li> <li>▭ Laydown Area</li> <li>▭ Workspace</li> </ul>	<ul style="list-style-type: none"> <li>▲ Photo Location</li> <li>▲ Scenic Vista Location</li> <li>▭ County Designated Scenic Highway</li> <li>▭ State Eligible &amp; County Designated Scenic Highway</li> <li>▭ Potential tree or large shrub removal</li> </ul>	<ul style="list-style-type: none"> <li>▭ 0.5 -Mile Project Buffer</li> <li>▭ Bureau of Indian Affairs</li> <li>▭ CDFW Land</li> <li>▭ City/County Park</li> <li>▭ DOD</li> <li>▭ NGO Park</li> <li>▭ US Bureau of Land Management</li> </ul>	
---	---	---	---	--	--

- The information depicted in these maps is preliminary and subject to change based on California Public Utilities Commission requirements, final engineering, and other factors.  
 - I-15 is an Eligible State Scenic Highway between the Riverside County Line and State Route 76.



MXDs\PEAA\Aesthetics\Detailed Character Photo Map\_v2.mxd 02/11/16

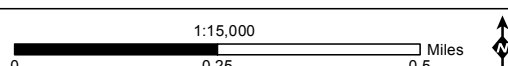


**Aesthetic Resources and Characterization Photograph Viewpoint Locations Map 15 of 15**

**Pipeline Safety & Reliability Project**

- |   |  |  |   |  |  |
|---|--|--|---|--|--|
| <ul style="list-style-type: none"> <li>■ Milepost</li> <li>□ City/County Boundary</li> <li>□ Existing Facility</li> </ul> | <b>Permanent</b> <ul style="list-style-type: none"> <li>— Proposed Project Route</li> <li>- - - Trenchless Construction</li> <li>— Cross-Tie Connector Line</li> <li>□ Aboveground Facility</li> </ul> | <b>Temporary</b> <ul style="list-style-type: none"> <li>■ Bore Pit</li> <li>□ Horizontal Directional Drill Workspace</li> <li>□ Laydown Area</li> <li>□ Workspace</li> </ul> | <ul style="list-style-type: none"> <li>▲ Photo Location</li> <li>▲ Scenic Vista Location</li> <li>— County Designated Scenic Highway</li> <li>— State Eligible &amp; County Designated Scenic Highway</li> <li>□ Potential tree or large shrub removal</li> </ul> | <ul style="list-style-type: none"> <li>□ 0.5 -Mile Project Buffer</li> <li>□ Bureau of Indian Affairs</li> <li>□ CDFW Land</li> <li>□ City/County Park</li> <li>□ DOD</li> <li>□ NGO Park</li> <li>□ US Bureau of Land Management</li> </ul> |  |
|---|--|--|---|--|--|

- The information depicted in these maps is preliminary and subject to change based on California Public Utilities Commission requirements, final engineering, and other factors.  
 - I-15 is an Eligible State Scenic Highway between the Riverside County Line and State Route 76.



MXD:\PE\AA\Aesthetics\Detailed Character Photo Map\_v2.mxd 02/11/16