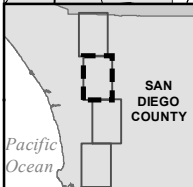
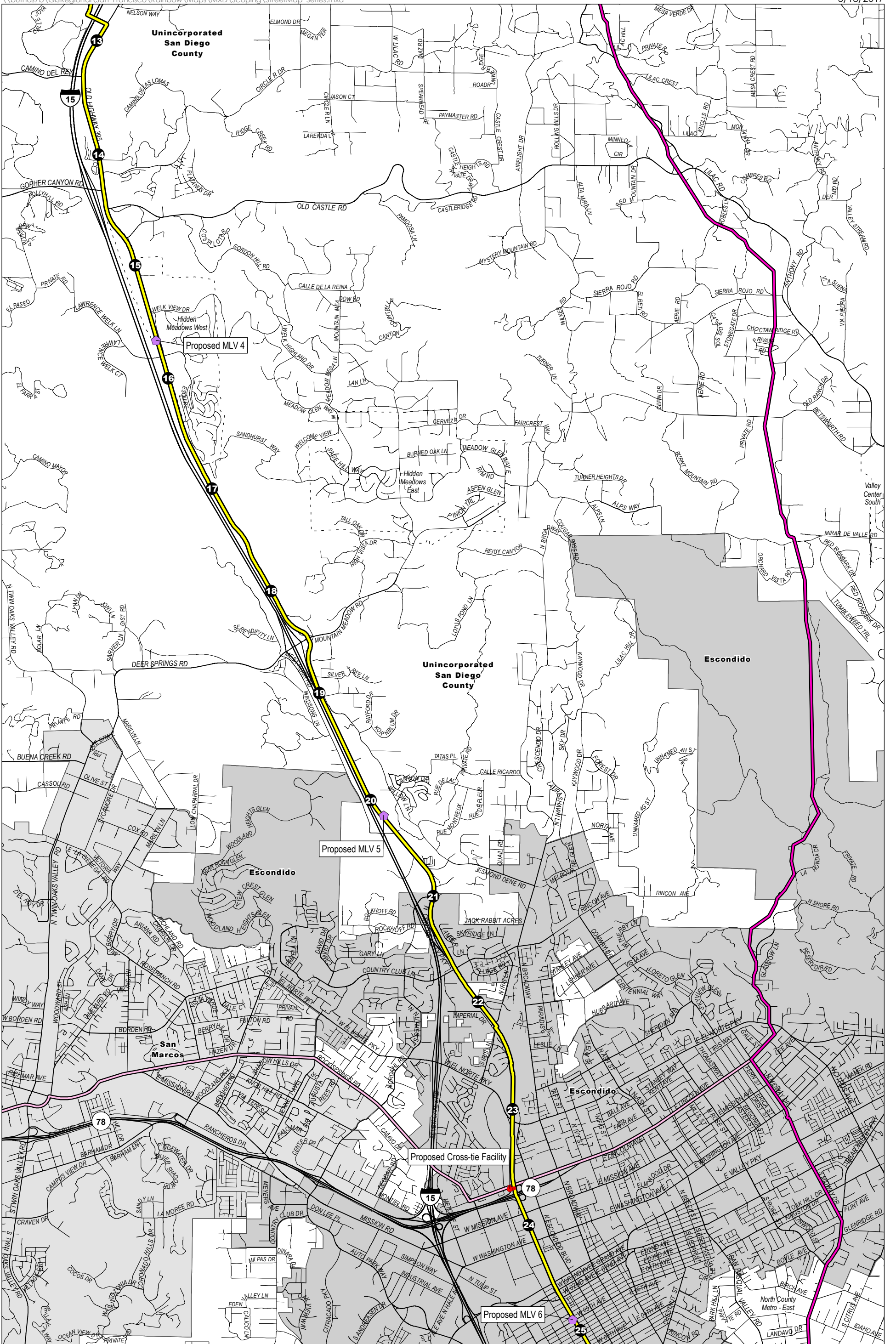


<b>1</b> Milepost	Proposed Line 3602	Municipal Boundary
Proposed Rainbow Pressure-Limiting Station	Existing Pipelines	County Boundary
Proposed Mainline Valve (MLV)	Land Administration	Community Boundary

Inset Map 1 of 4

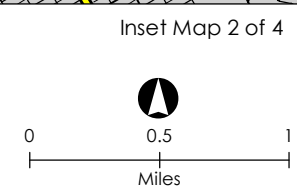
0 0.5 1 Miles

**Highways and Major Roads**  
 Pipeline Safety and Reliability Project - New Natural Gas Line 3602 and De-rating Line 1600  
 San Diego County, CA

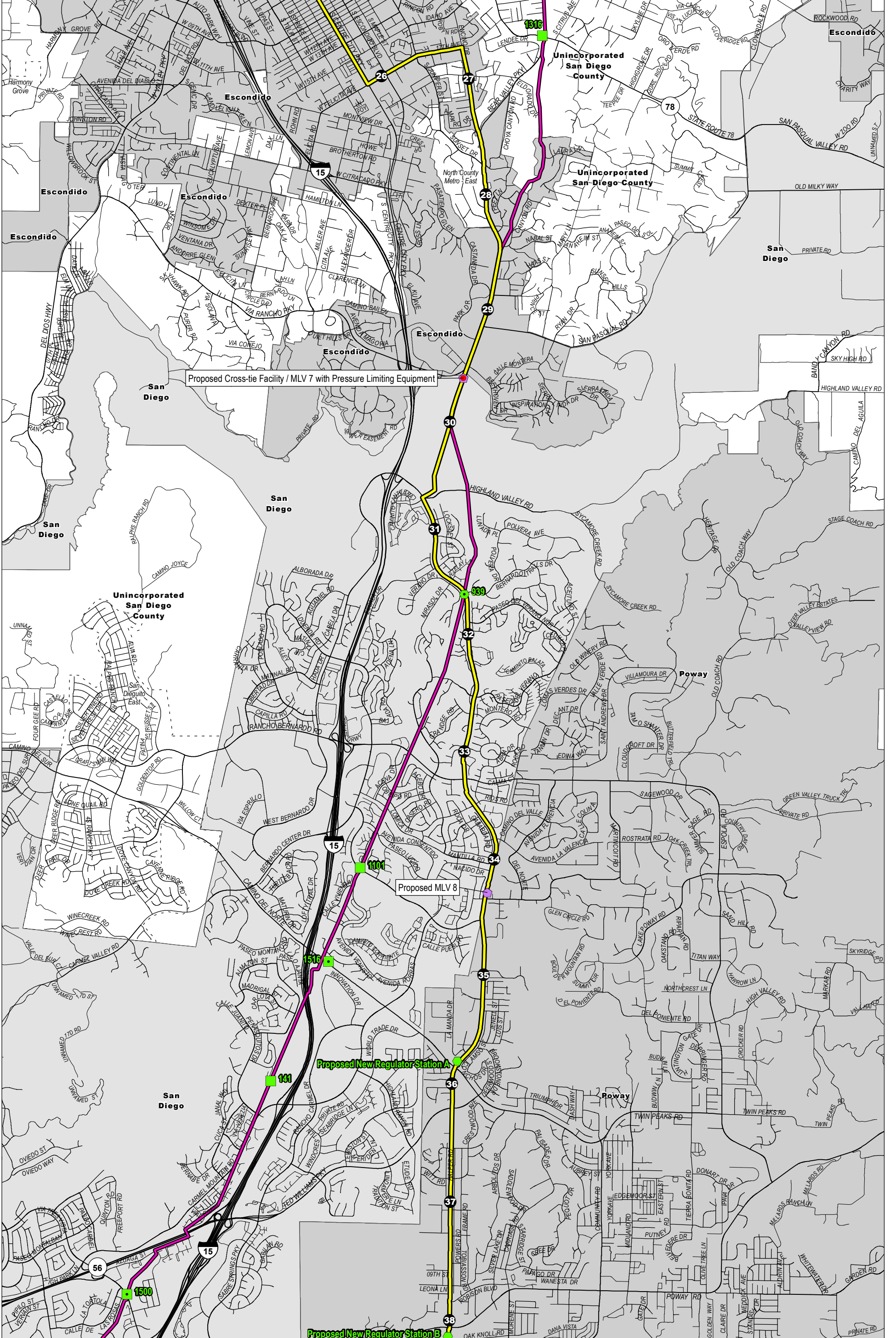


- Milepost
- Proposed Cross-Tie Facility
- Proposed Mainline Valve (MLV)
- Proposed Tie-Ins & Extensions

- Proposed Line 3602 Land Administration
- Existing Pipelines
- Community Boundary
- Municipal Boundary

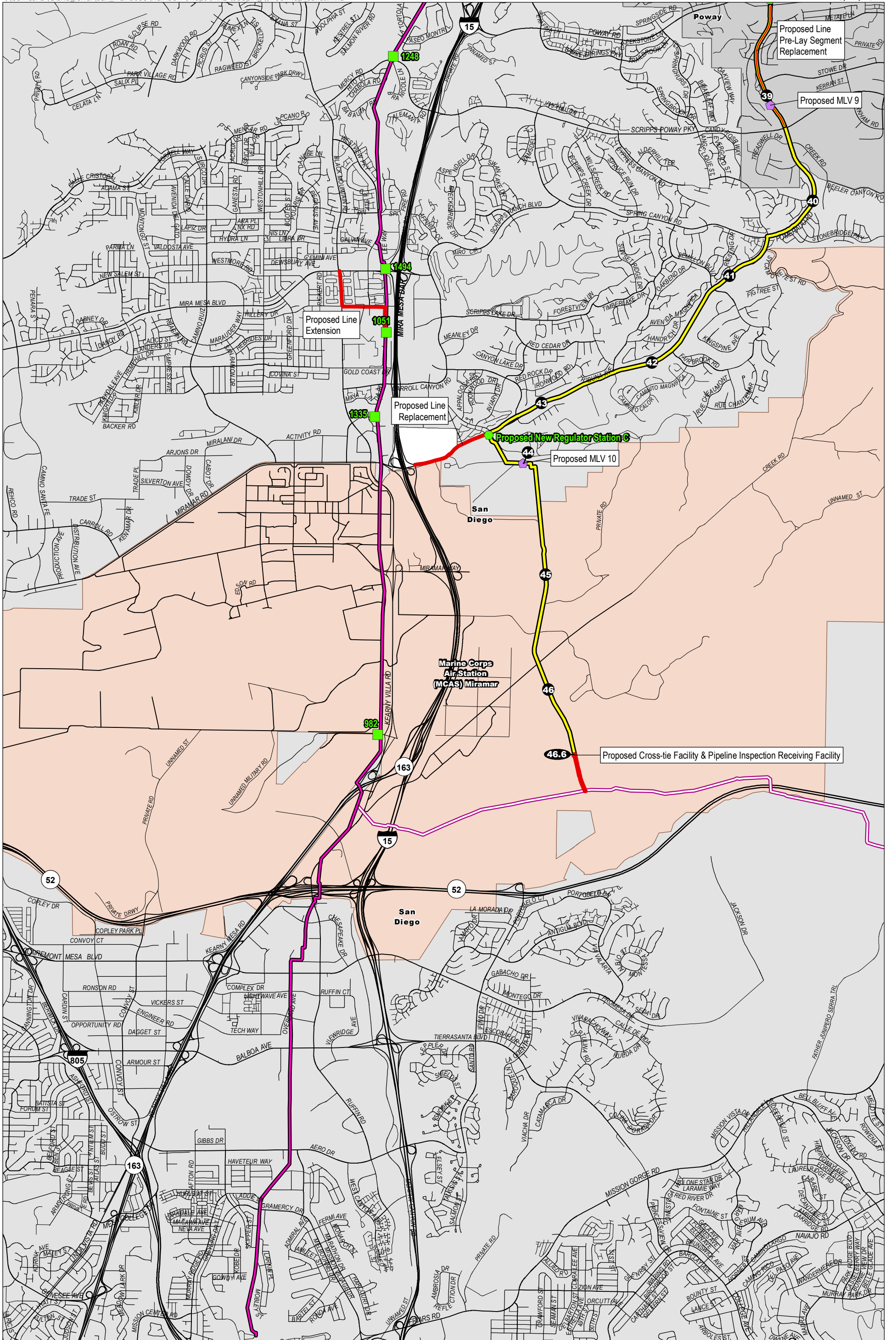


**Highways and Major Roads**  
 Pipeline Safety and Reliability  
 Project - New Natural Gas  
 Line 3602 and De-rating  
 Line 1600  
 San Diego County, CA



<p><b>SAN DIEGO COUNTY</b></p>	<ul style="list-style-type: none"> <li> Milepost</li> <li> Proposed Cross-Tie Facility</li> <li> Proposed Mainline Valve (MLV)</li> <li> Regulator Station Removal</li> <li> Regulator Station Removal, Replace with Proposed Check Valve</li> <li> Regulator Station Removal, Replace with a Proposed New Regulator Station</li> <li> Proposed Regulator Station with Connecting Pipeline</li> </ul>	<ul style="list-style-type: none"> <li> Proposed Line 3602</li> <li> Existing Pipelines</li> <li> Land Administration</li> <li> Community Boundary</li> <li> Municipal Boundary</li> </ul>	<p>Inset Map 3 of 4</p>	<p><b>Highways and Major Roads</b>        Pipeline Safety and Reliability        Project - New Natural Gas        Line 3602 and De-rating        Line 1600        San Diego County, CA</p>
--------------------------------	---	--	-------------------------	--

Sources: ESRI 2012, 2017; SanGIS 2017; SDG&E 2017; USMC 2017



<p><b>SAN DIEGO COUNTY</b></p>	<ul style="list-style-type: none"> <li> Milepost</li> <li> Proposed Cross-Tie Facility</li> <li> Proposed Mainline Valve (MLV)</li> <li> Regulator Station Removal</li> </ul>	<ul style="list-style-type: none"> <li> Proposed Regulator Station with Connecting Pipeline</li> <li> Proposed Tie-Ins &amp; Extensions</li> <li> Proposed Line 3602</li> <li> Existing Pipelines</li> </ul>	<ul style="list-style-type: none"> <li> Land Administration</li> <li> MCAS Miramar</li> <li> Municipal Boundary</li> </ul>	<p>Inset Map 4 of 4</p> <p>0 0.5 1 Miles</p>	<p><b>Highways and Major Roads</b>          Pipeline Safety and Reliability          Project - New Natural Gas          Line 3602 and De-rating          Line 1600          San Diego County, CA</p>
--------------------------------	---	--	--	--	--

Sources: ESRI 2012, 2017; SanGIS 2017; SDG&E 2017; USMC 2017