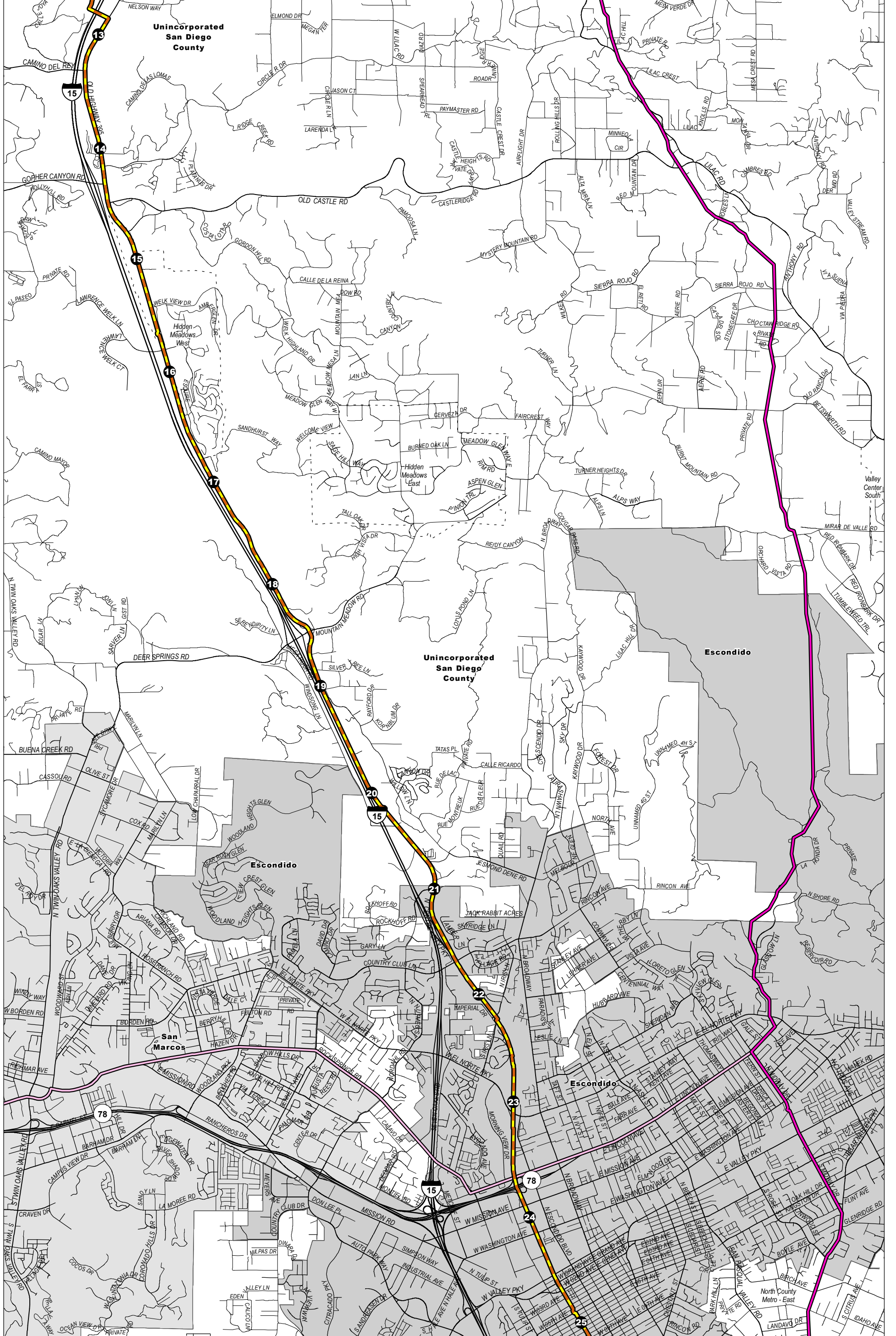


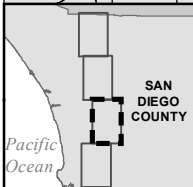
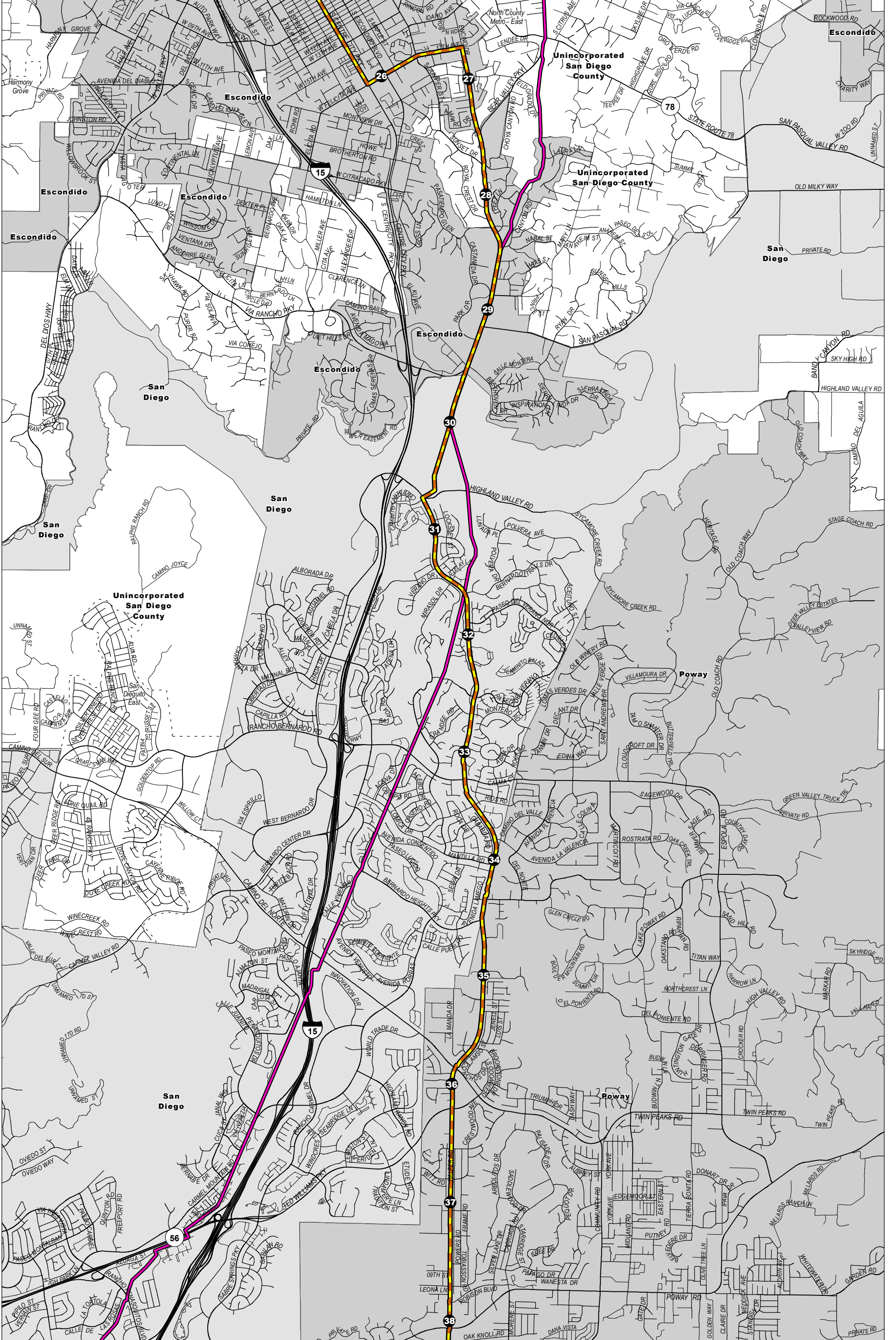
<p>1 Milepost</p> <p>▲ Proposed Rainbow Pressure-Limiting Station</p> <p>— Proposed Line 3602</p> <p>— Proposed Project Alternatives</p> <p>— No Project</p>	<p>— Rainbow to Santee Non-Miramar</p> <p>— Land Administration</p> <p>- - - Community Boundary</p> <p>□ Municipal Boundary</p> <p>— County Boundary</p>	<p>Inset Map 1 of 5</p> <p>0 0.5 1 Miles</p>
-------------------------------------------------------------------------------------------------------------------------------------------------------------------------------------------------	---------------------------------------------------------------------------------------------------------------------------------------------------------------------------------------------	----------------------------------------------

Highways and Major Roads
 Pipeline Safety and Reliability
 Project - New Natural Gas
 Line 3602 and De-rating
 Line 1600
 San Diego County, CA



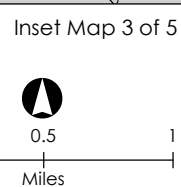
1 Milepost	Existing Pipelines	Inset Map 2 of 5
Proposed Line 3602	Land Administration	
Proposed Project Alternatives	Community Boundary	0 0.5 1
No Project	Municipal Boundary	Miles
Rainbow to Santee Non-Miramar		

Highways and Major Roads
 Pipeline Safety and Reliability
 Project - New Natural Gas
 Line 3602 and De-rating
 Line 1600
 San Diego County, CA



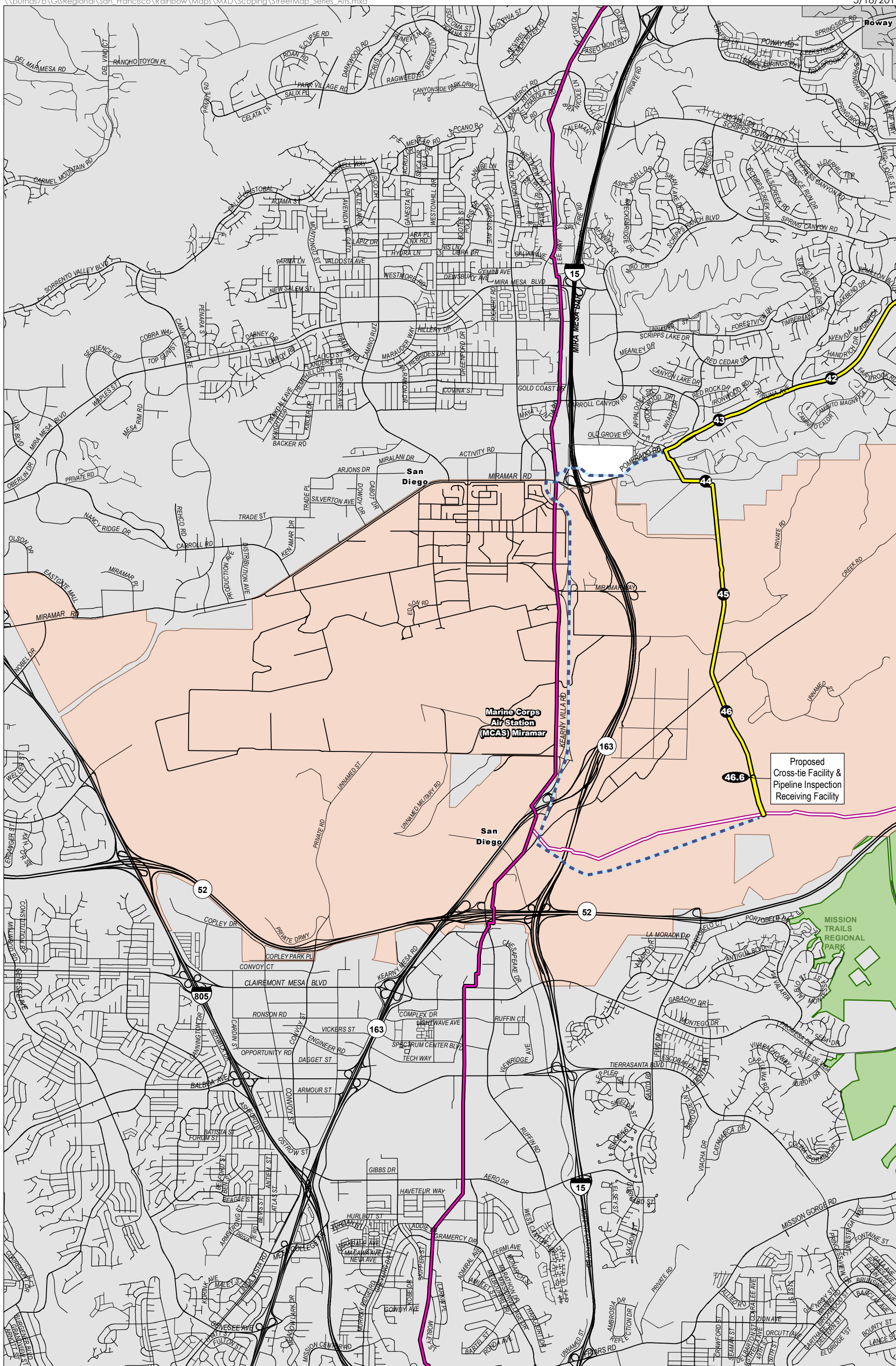
- Milepost
- Proposed Line 3602
- Proposed Project Alternatives
- No Project
- Rainbow to Santee Non-Miramir

- Land Administration**
- Community Boundary
- Municipal Boundary



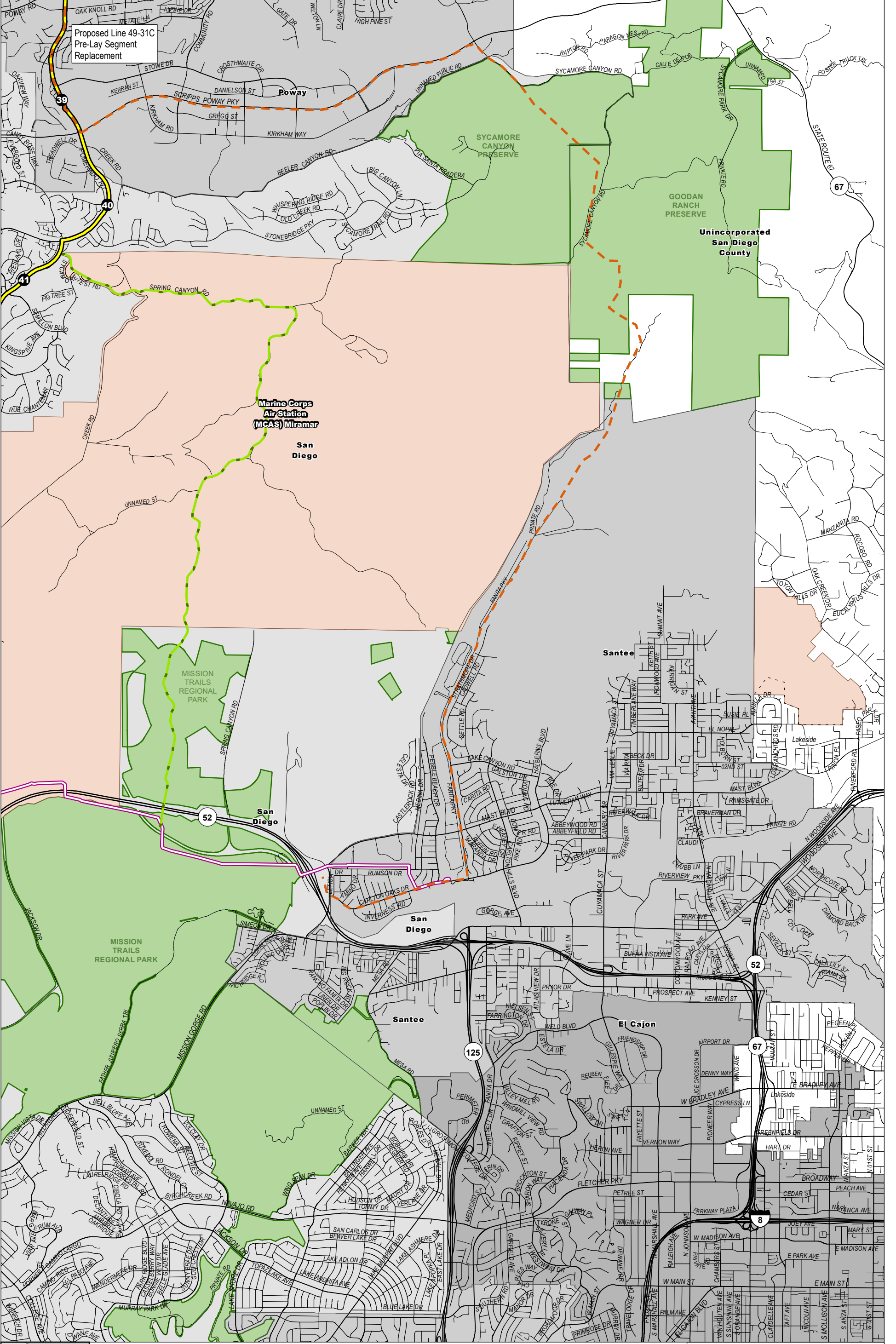
Inset Map 3 of 5
Highways and Major Roads
 Pipeline Safety and Reliability
 Project - New Natural Gas
 Line 3602 and De-rating
 Line 1600
 San Diego County, CA

Sources: ESRI 2012, 2017; SanGIS 2017; SDG&E 2017; USMC 2017



Proposed
Cross-tie Facility &
Pipeline Inspection
Receiving Facility

<p>SAN DIEGO COUNTY</p> <p>Pacific Ocean</p>	<p>1 Milepost</p> <p> Proposed Line 3602</p> <p> Proposed Project Alternatives</p> <p> Kearny Villa Road</p>	<p> Existing Pipelines</p> <p> Land Administration</p> <p> Open Space</p> <p> MCAS Miramar</p>	<p> Municipal Boundary</p>	<p>Inset Map 4 of 5</p> <p></p> <p>0 0.5 1 Miles</p>	<p>Highways and Major Roads</p> <p>Pipeline Safety and Reliability Project - New Natural Gas Line 3602 and De-rating Line 1600</p> <p>San Diego County, CA</p>
	<p>Sources: ESRI 2012, 2017; SanGIS 2017; SDG&E 2017; USMC 2017</p>				



Proposed Line 49-31C
Pre-Lay Segment
Replacement

Marine Corps
Air Station
(MCAS) Miramar

San
Diego

Unincorporated
San Diego
County

MISSION TRAILS
REGIONAL PARK

MISSION TRAILS
REGIONAL PARK

Highways and Major Roads
Pipeline Safety and Reliability
Project - New Natural Gas
Line 3602 and De-rating
Line 1600
San Diego County, CA

<p>Pacific Ocean</p> <p>SAN DIEGO COUNTY</p>	<p>1 Milepost</p> <p> Proposed Line 3602</p> <p> Proposed Project Alternatives</p> <p> Spring Canyon Firebreak</p> <p> Rainbow to Santee Non-Miramar</p>	<p> Existing Pipelines</p> <p> Land Administration</p> <p> Community Boundary</p> <p> Open Space</p>	<p> MCAS Miramar</p> <p> Municipal Boundary</p>	<p>Inset Map 5 of 5</p> <p></p> <p>0 0.5 1 Miles</p>
----------------------------------------------	-----------------------------------------------------------------------------------------------------------------------------------------------------------------	------------------------------------------------------------------------------------------------------	-------------------------------------------------	----------------------------------------------------------

Sources: ESRI 2012, 2017; SanGIS 2017; SDG&E 2017; USMC 2017