

## PUBLIC UTILITIES COMMISSION

505 VAN NESS AVENUE  
SAN FRANCISCO, CA 94102-3298



March 28, 2019

**Subject: Estrella Substation and Paso Robles Area Reinforcement Project (A.17-01-023) – Draft Alternatives Screening Report Available for Review and Comment**

Dear Project Stakeholder,

The Draft Alternatives Screening Report (ASR) for the Estrella Substation and Paso Robles Area Reinforcement Project is being circulated for a public comment period that will conclude on May 2, 2019. The Draft ASR will be posted and available for download at the Project website:

[www.cpuc.ca.gov/environment/info/horizonh2o/estrella/index.html](http://www.cpuc.ca.gov/environment/info/horizonh2o/estrella/index.html)

Comments should be submitted to the Project email address: [estrellaproject@horizonh2o.com](mailto:estrellaproject@horizonh2o.com)

The California Public Utilities Commission (CPUC) will consider comments on the Draft ASR during preparation of the Final ASR, which will be included as an appendix to the Draft Environmental Impact Report (EIR).

**Summary of Alternatives Screening Results**

As described in detail in the Draft ASR, the following alternatives have been identified for full analysis in the Draft EIR:

- Alternative Substation Site (SS)-1: McDonald Ranch Substation Site
- Alternative Power Line Route (PLR)-1: Estrella Route (Variations: PLR-1A, PLR-1C, and PLR-1D)
- Alternative PLR-3: Strategic Undergrounding
- Alternative Substation Expansion (SE)-1: Templeton Substation Expansion
- Alternative SE-PLR-2: Templeton-Paso South River Road Route
- Alternative Battery Storage (BS)-1: Battery Storage to Address Transmission Objective (in front of the meter, i.e., the utility's side of the meter) (Variations: BS-1A, BS-1B, BS-1C, BS-1D, and BS-1E)
- Alternative BS-2: Battery Storage to Address Distribution Objective (in front of the meter)
- Alternative BS-3: Behind the Meter Battery Storage (i.e., customer side of the meter; further analysis still pending)

The attached Figure 3-1 from the Draft ASR identifies these alternatives and additional alternatives considered in the Draft ASR.

**Additional Information on the California Environmental Quality Act (CEQA) Process**

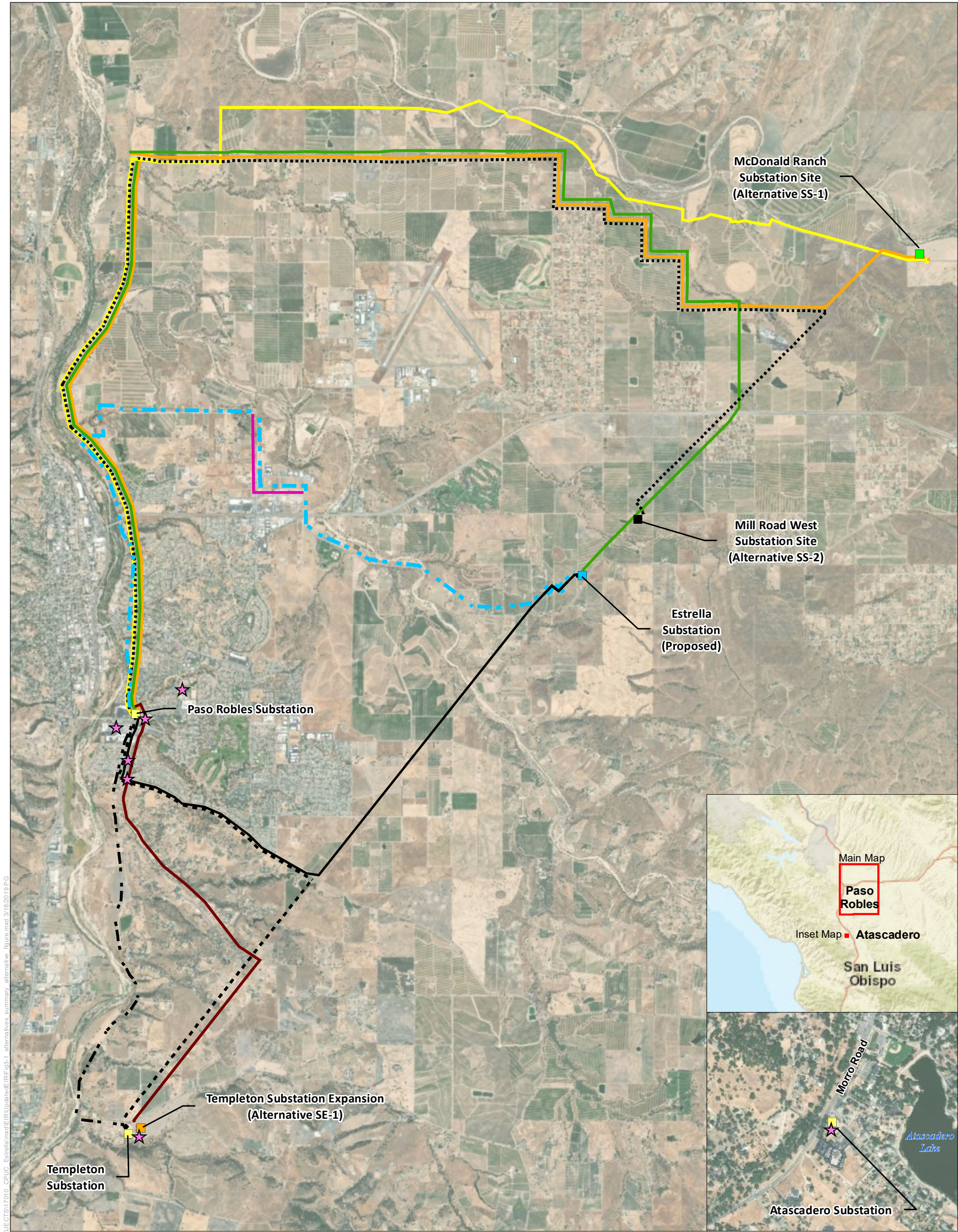
For questions about the report or the CEQA review process, please contact Tom Engels, Horizon Water and Environment, at 916/790-8548. The Draft EIR is currently in preparation and will be informed by the Draft ASR. Once the Draft EIR is completed, it will be circulated for public review, and the CPUC will accept comments on it and hold a public meeting. A date for Draft EIR circulation has not yet been set.

Sincerely,

A handwritten signature in black ink, appearing to read "Robert Peterson".

Robert Peterson  
Project Manager  
Energy Division, CEQA Unit





Basemap Sources: Sources: Esri, HERE, Garmin, USGS, Intermap, INCREMENT P, NRCan, Esri Japan, METI, Esri China (Hong Kong), Esri Korea, Esri (Thailand), NGCC, © OpenStreetMap contributors, and the GIS User Community

- Estrella Substation
- Existing Substation
- Proposed Project 70-kV Route

#### Project Alternatives Retained for Full Analysis

- Alternative SS-1: McDonald Ranch Substation Site
- Alternative PLR-1A: Estrella Route to Estrella Substation
- Alternative PLR-1C: Estrella Route to McDonald Ranch, Option 1
- Alternative PLR-1D: Estrella Route to McDonald Ranch, Option 2
- Alternative PLR-3: Strategic Undergrounding
- Alternative SE-1: Templeton Substation Expansion
- Alternative SE-PLR-2: Templeton-Paso South River Road Route
- Potential Front-of-the-Meter Battery Storage Location (Alternative BS-1 & BS-2)
- Note: Behind-the-meter battery storage still under review (Alternative BS-3). All variations of Alternative BS-1 carried forward.

#### Other Project Alternatives Considered

- Alternative SS-2: Mill Road West Substation Site
- Alternative PLR-1B: Estrella Route to Mill Road West
- Alternative PLR-2: Creston Route (Variations not shown; not carried forward)
- Alternative SE-PLR-1: Templeton-Paso 70kV Route (Existing)
- Alternative SE-PLR-3: Templeton-Paso Creston Route

Note: The route variations shown are offset in order to display the alignments of the alternative routes that may overlap in places.

**Figure 3-1**  
Alternatives  
Summary Map

Estrella Substation and  
Paso Robles Area Reinforcement Project