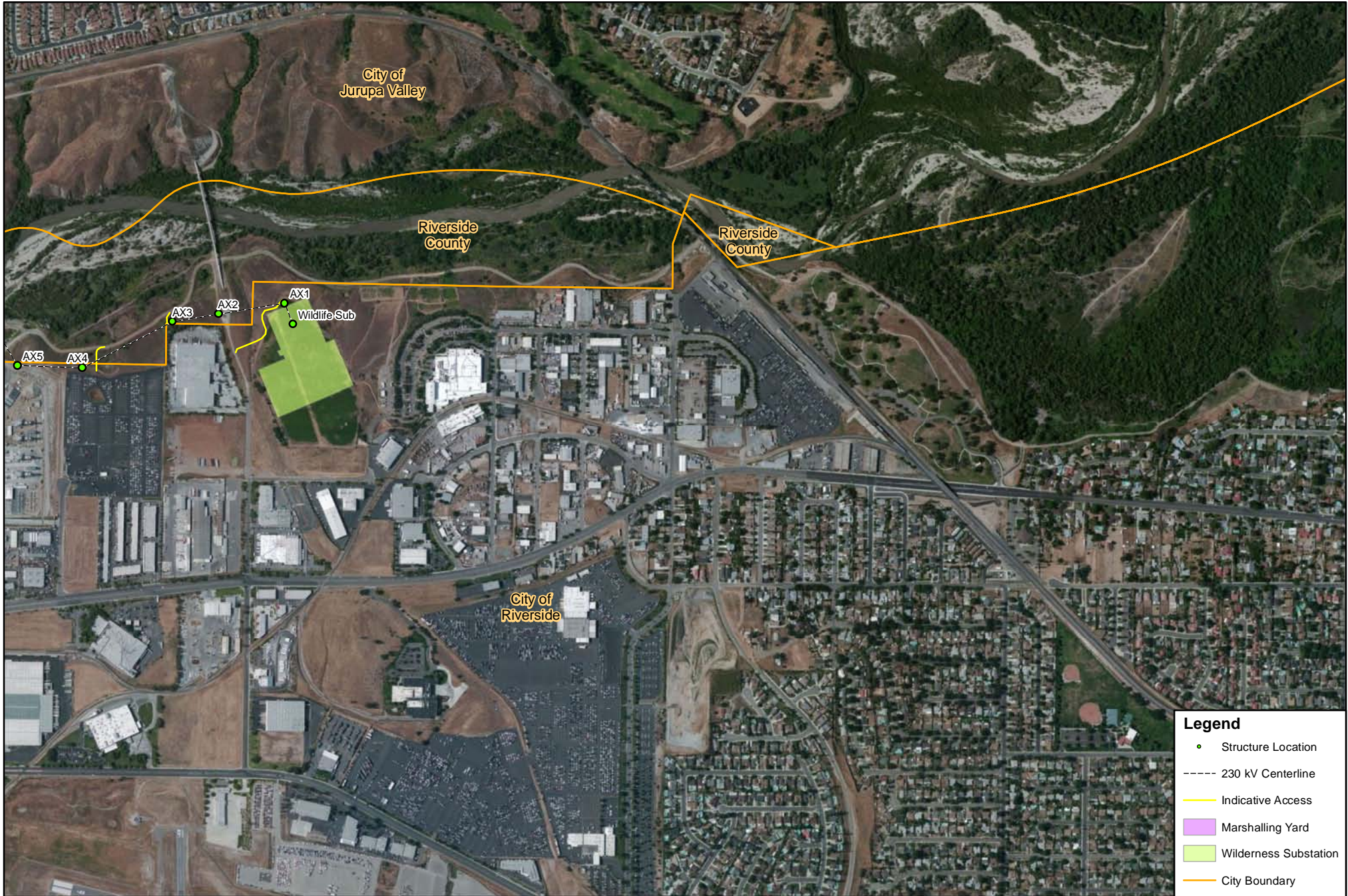
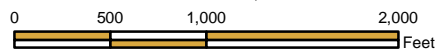

ATTACHMENT D: PRELIMINARY 230 KV PROJECT LAYOUT

THIS PAGE INTENTIONALLY LEFT BLANK



Scale: 1 in = 1,000 mi

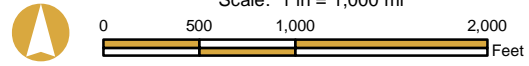


The data presented here are based on preliminary engineering design performed to date and represent the best available information used to establish anticipated construction activities and assess impacts to the environment. The land disturbance estimates, locations of towers, access roads, etc. provided are therefore subject to change based on final engineering.



Legend

- Structure Location
- 230 kV Centerline
- Indicative Access
- Marshalling Yard
- Wilderness Substation
- City Boundary

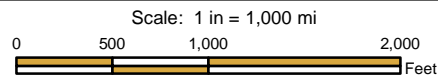


The data presented here are based on preliminary engineering design performed to date and represent the best available information used to establish anticipated construction activities and assess impacts to the environment. The land disturbance estimates, locations of towers, access roads, etc. provided are therefore subject to change based on final engineering.

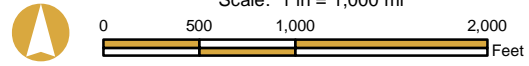


Legend

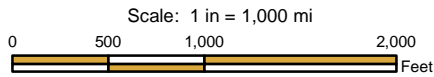
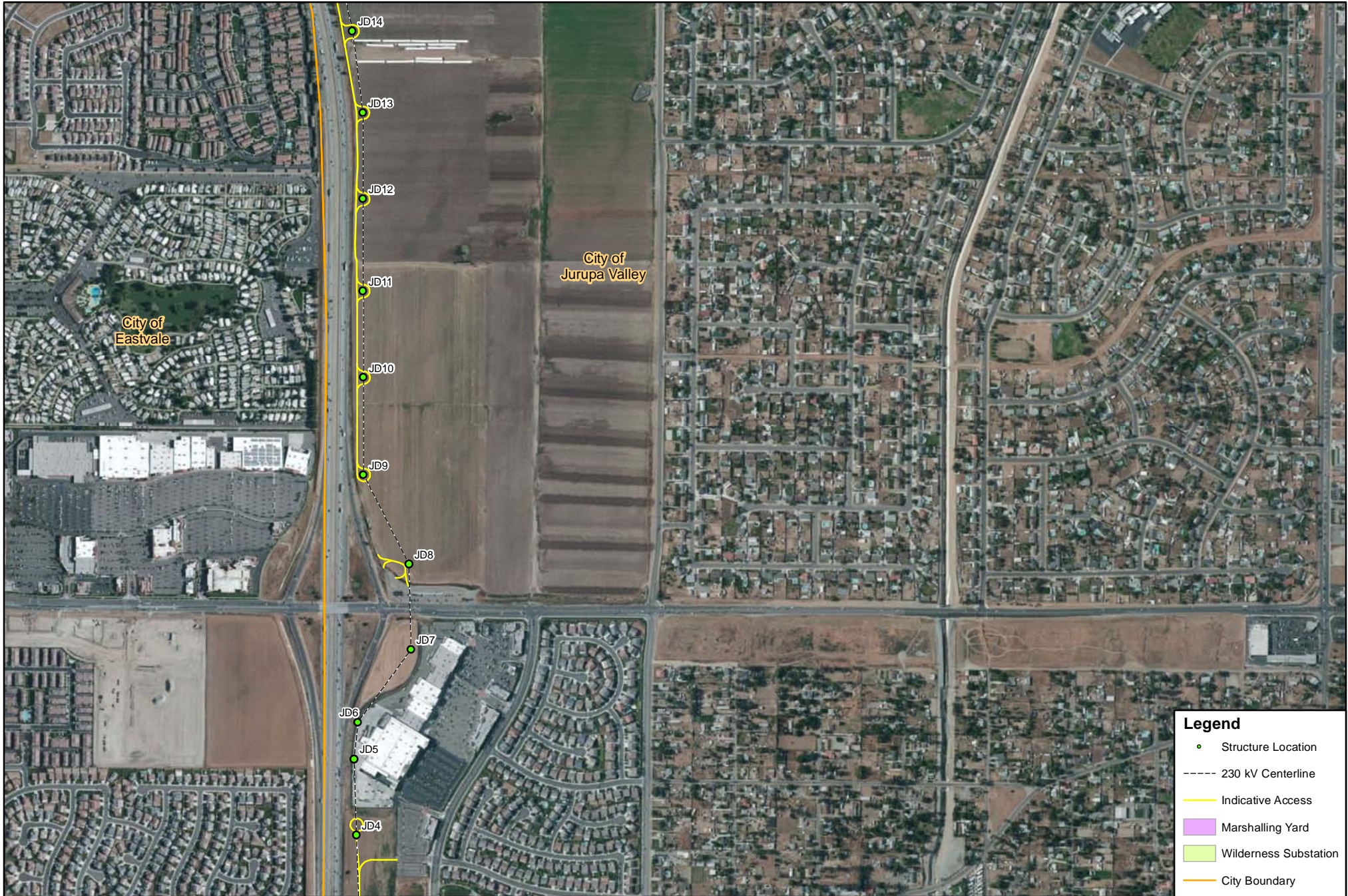
- Structure Location
- 230 kV Centerline
- Indicative Access
- Marshalling Yard
- Wilderness Substation
- City Boundary



The data presented here are based on preliminary engineering design performed to date and represent the best available information used to establish anticipated construction activities and assess impacts to the environment. The land disturbance estimates, locations of towers, access roads, etc. provided are therefore subject to change based on final engineering.



The data presented here are based on preliminary engineering design performed to date and represent the best available information used to establish anticipated construction activities and assess impacts to the environment. The land disturbance estimates, locations of towers, access roads, etc. provided are therefore subject to change based on final engineering.



The data presented here are based on preliminary engineering design performed to date and represent the best available information used to establish anticipated construction activities and assess impacts to the environment. The land disturbance estimates, locations of towers, access roads, etc. provided are therefore subject to change based on final engineering.



Legend

- Structure Location
- 230 kV Centerline
- Indicative Access
- Marshalling Yard
- Wilderness Substation
- City Boundary

Scale: 1 in = 1,000 mi

0 500 1,000 2,000 Feet

The data presented here are based on preliminary engineering design performed to date and represent the best available information used to establish anticipated construction activities and assess impacts to the environment. The land disturbance estimates, locations of towers, access roads, etc. provided are therefore subject to change based on final engineering.