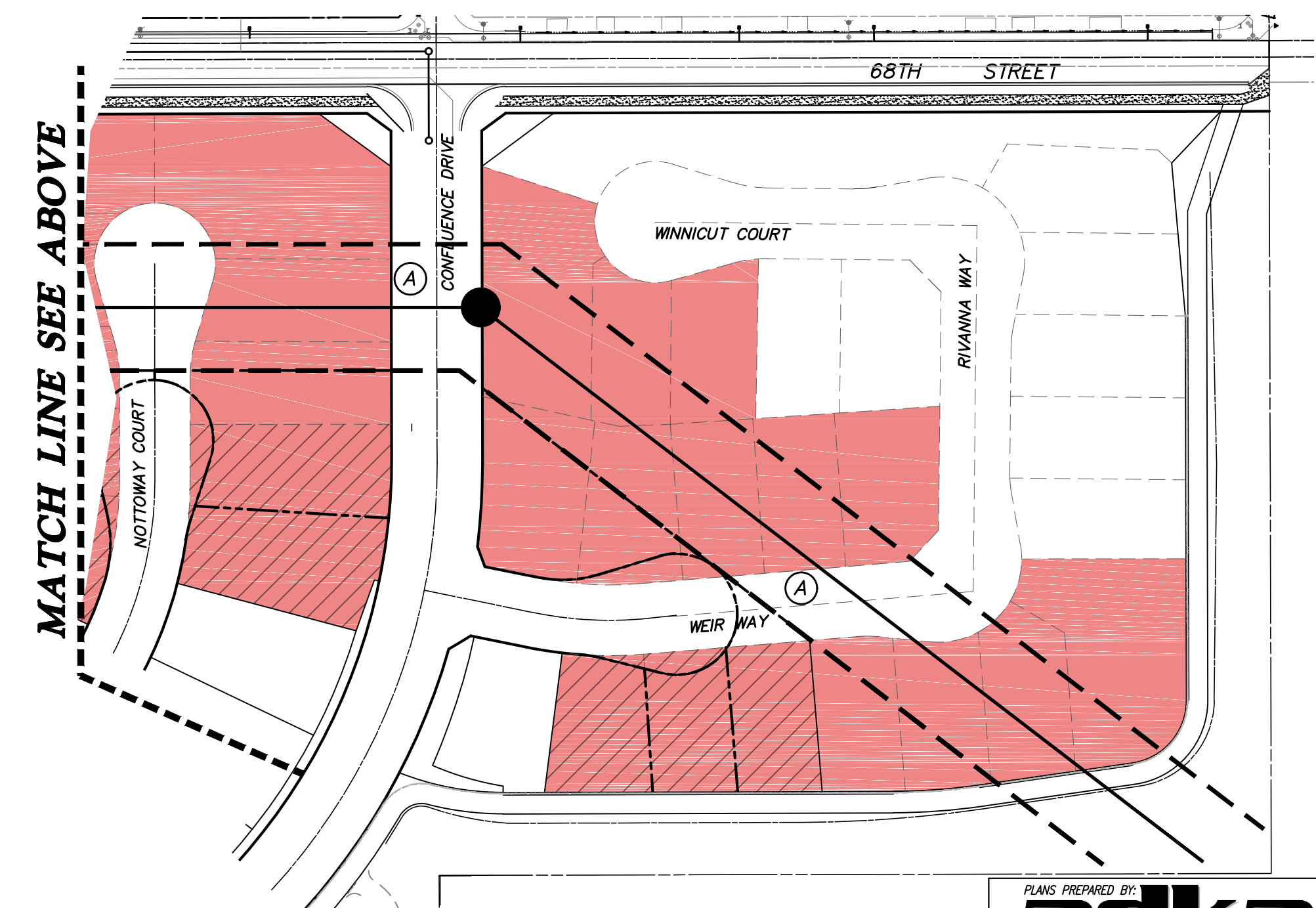
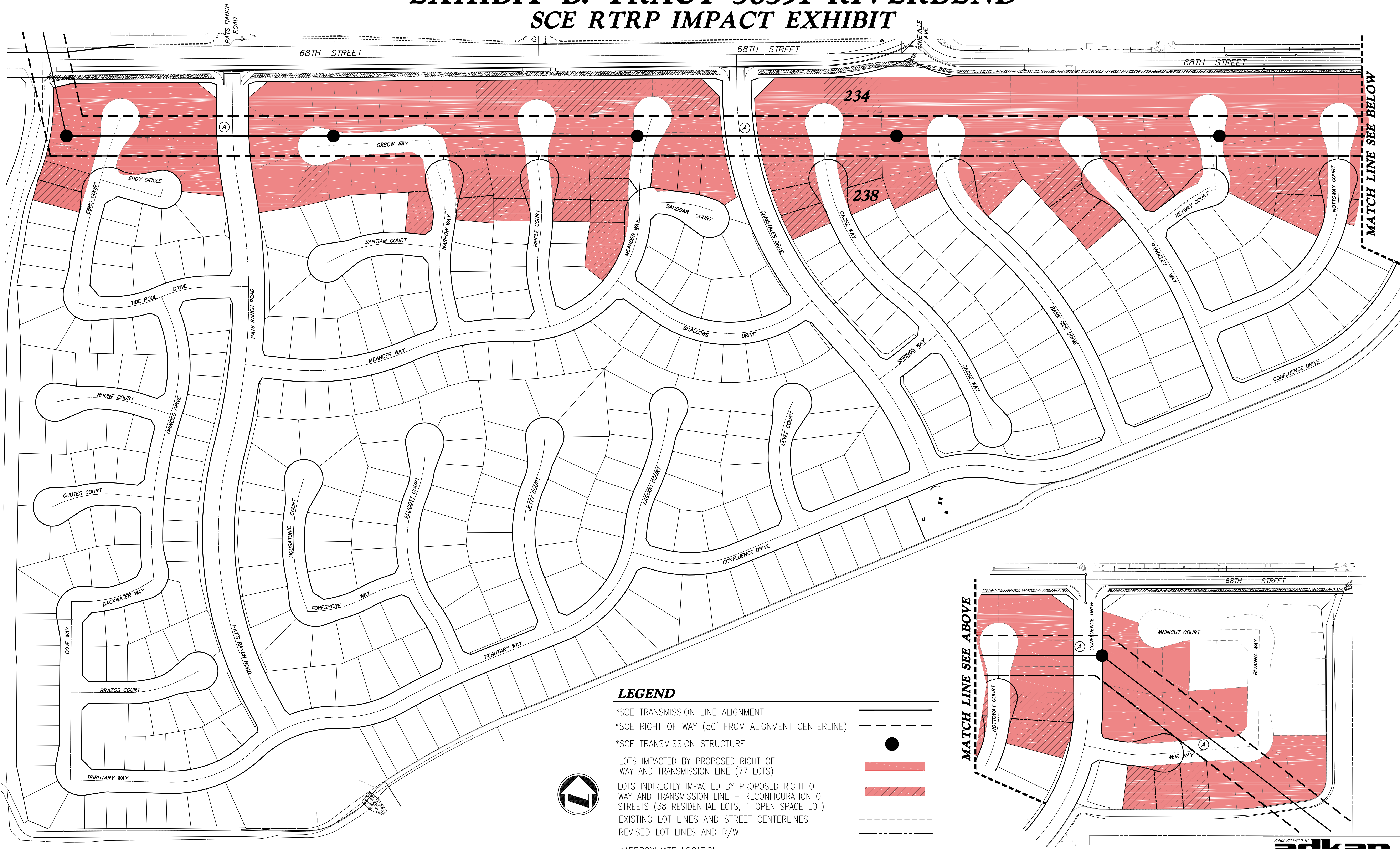


EXHIBIT B: TRACT 36391 RIVERBEND

SCE RTRP IMPACT EXHIBIT



LEGEND

- *SCE TRANSMISSION LINE ALIGNMENT
- *SCE RIGHT OF WAY (50' FROM ALIGNMENT CENTERLINE)
- *SCE TRANSMISSION STRUCTURE
- LOTS IMPACTED BY PROPOSED RIGHT OF WAY AND TRANSMISSION LINE (77 LOTS)
- LOTS INDIRECTLY IMPACTED BY PROPOSED RIGHT OF WAY AND TRANSMISSION LINE - RECONFIGURATION OF STREETS (38 RESIDENTIAL LOTS, 1 OPEN SPACE LOT)
- EXISTING LOT LINES AND STREET CENTERLINES
- REVISED LOT LINES AND R/W
- *APPROXIMATE LOCATION
- NOTE (A): ASSUMES SCE WILL GRANT PUBLIC ACCESS OVER THEIR RIGHT OF WAY

