

**ATTACHMENT 1:**  
**DRAFT EIR PUBLIC REVIEW MATERIALS**

---





**ATTACHMENT 1**  
**DRAFT EIR PUBLIC REVIEW MATERIALS**

**NOTICE OF AVAILABILITY**

---

**ATTACHMENT 1**  
**DRAFT EIR PUBLIC REVIEW MATERIALS**

*This page is intentionally left blank.*

## PUBLIC UTILITIES COMMISSION

505 VAN NESS AVENUE

SAN FRANCISCO, CA 94102-3298

FILED  
Ernest J. Dronenburg, Jr., Recorder County Clerk

SEP 18 2015

BY **I. Aranda**  
DEPUTY

**To:** State Clearinghouse, Responsible and Trustee Agencies, Property Owners, and Interested Parties

**From:** Billie Blanchard, Environmental Project Manager

**Subject:** Notice of Availability of a Draft Environmental Impact Report and Informational Workshops for San Diego Gas & Electric's Sycamore—Peñasquitos 230-Kilovolt Transmission Line Project (A-14-04-011)

**Date:** September 17, 2015

The California Public Utilities Commission (CPUC) as the Lead Agency under the California Environmental Quality Act (CEQA) has prepared a Draft Environmental Impact Report (EIR) for consideration of the San Diego Gas & Electric (SDG&E) application to build and operate the Sycamore—Peñasquitos 230-Kilovolt (kV) Transmission Line Project (Proposed Project).

**Draft EIR Availability**

This Draft EIR is being released for public review on September 17, 2015 and comments on the Draft EIR are due on or before November 2, 2015. It is also available for review at numerous area libraries (see list at end of this Notice) and for review and download on the project website:

[http://www.cpuc.ca.gov/Environment/info/panoramaenv/Sycamore\\_Penasquitos/index.html](http://www.cpuc.ca.gov/Environment/info/panoramaenv/Sycamore_Penasquitos/index.html)

A limited number of additional copies of the complete multi-volume Draft EIR document or a stand-alone executive summary with a CD of the entire document are available upon request by email at [sycamorepenasquitos@panoramaenv.com](mailto:sycamorepenasquitos@panoramaenv.com) or by phone (650-373-1200) or fax (650-373-1211).

**Description of the Proposed Project**

As illustrated on Figure ES 1-1 (see page ES-3 of the Executive Summary), the Proposed Project would construct a transmission line and modify several substations. The majority of the proposed transmission line would be located in the City of San Diego with small portions in the City of Poway and the Marine Corps Air Station (MCAS) Miramar east of Interstate 15 (I-15). Ancillary proposed activities would occur within the Cities of Carlsbad and Oceanside at existing facilities. The Sycamore—Peñasquitos transmission corridor traverses numerous land uses including residential, open space, military (MCAS Miramar), vacant land, urban, commercial/shopping, industrial/energy facility, park, transportation, and light industrial/business park uses.

The Proposed Project includes the following major components:

- Construction of three overhead segments (Segments A, C, and D) and one underground segment (Segment B) of 230-kV transmission line between Sycamore Canyon Substation and Peñasquitos Canyon Substation
- Modifications at Sycamore Canyon and Peñasquitos Substations to facilitate the connection of the new 230-kV transmission line
- Minor modifications including adjusting relays and upgrading protection on remaining lines at Chicarita, Mission, and San Luis Rey Substations

FILED IN THE OFFICE OF THE CLERK

San Diego, California

Filed \_\_\_\_\_

Returned to \_\_\_\_\_

Deputy **I. Aranda**

- Removal or reconfiguration of existing transmission lines at the Encina Hub to open a position for the new 230-kV line in Segment C
- Reversal of positions of existing 230-kV line phase components between the Mission Substation and the Peñasquitos Junction (intersection of Proposed Project Segments C and D) in order to accommodate the bundling of power lines within Segment C

### **Project Objectives**

The CPUC has defined three Basic Project Objectives for the Proposed Project:

1. To maintain long-term grid reliability in the absence of San Onofre Nuclear Generating System (SONGS) generation
2. To deliver energy more efficiently to the load center in San Diego
3. To support deliverability of renewable resources identified in SDG&E's Renewable Portfolio Standard (RPS) portfolio

These objectives have guided the development of alternatives to the Proposed Project.

### **Contents of the Draft EIR**

The Draft EIR contains over 2,600 pages in three volumes (see Table 3 at the end of this Notice for a list of the contents of each volume). It includes the analysis of the environmental effects of the Proposed Project and of the five alternatives to all or part of the Proposed Project. The Draft EIR identifies the impacts that could be significant, and presents mitigation measures, which, if adopted by the CPUC, could avoid, reduce, or minimize these impacts.

**Impacts of the Proposed Project.** The Proposed Project would have eight significant and unavoidable impacts in one or more segments in the following resource areas: aesthetics, transportation and traffic, noise, and recreation. Eleven resource areas would have significant impacts that can be mitigated to a less than significant level or are less than significant without mitigation. The Proposed Project would not have an impact to land use or population and housing.

**Alternatives to the Proposed Project.** An intensive alternatives screening process culminated in the identification and preliminary screening of 41 potential alternatives. These alternatives encompass both physical routing and system alternatives. Thirty-six alternatives were eliminated from analysis after screening, and five alternatives were retained for full EIR analysis. The five retained alternatives are:

- **Alternative 1: Eastern Cable Pole at Carmel Valley Road.** Alternative 1 is a cable pole relocation alternative along the Proposed Project route that would eliminate the impacts associated with the proposed installation of a tubular steel cable pole north of Carmel Valley Road at the northern end of Black Mountain Ranch Community Park.
- **Alternative 2: Eastern Cable Pole at Pole P40 and Underground Alignment through City Open Space or City Water Utility Service Road.** Alternative 2 is a cable pole relocation alternative along the Proposed Project route that would eliminate the impacts associated with the proposed installation of a tubular steel cable pole north of Carmel Valley Road at the northern end of Black Mountain Ranch Community Park.
- **Alternative 3: Los Peñasquitos Canyon Preserve-Mercy Road Underground.** Alternative 3 is a routing alternative along the Proposed Project route that would install 5.9 miles of underground transmission line that avoids the northern portion of Segment A and all of Segments B and C. Alternative 3 would start where the existing SDG&E right of way

crosses Ivy Hill Road and end approximately 550 feet west of the Peñasquitos Junction (i.e., where Proposed Project Segments C and D meet).

- **Alternative 4: Segment D 69-kV Partial Underground Alignment.** Alternative 4 is a routing alternative along the Proposed Project route that would eliminate the impacts from new tubular steel pole installation along 2.8 miles of Segment D. This alternative would construct a double-circuit 69-kV underground power line starting at two new cable poles in Proposed Project Segment D near existing lattice tower E17.
- **Alternative 5: Pomerado Road to Miramar Area North Combination Underground/Overhead.** Alternative 5 is a routing alternative located within an entirely new alignment from the Proposed Project. Alternative 5 would underground the majority of the transmission line along a new route with the exception of the east and west ends where the transmission line would be overhead within existing SDG&E rights of way.

### Submitting Comments on the Draft EIR

Written comments on the Draft EIR must be postmarked or received by fax or email no later than **November 2, 2015**. Please be sure to include your name, address, and telephone number with your comments. Written comments on the Draft EIR should be sent to:

**California Public Utilities Commission**  
**c/o Panorama Environmental, Inc.**  
**1 Embarcadero Center, Suite 740**  
**San Francisco, CA 94111**  
  
**Fax: 650-373-1211**  
  
**E-Mail: [sycamorepenasquitos@panoramaenv.com](mailto:sycamorepenasquitos@panoramaenv.com)**

### Informational Workshops

In order to help affected communities understand the Proposed Project, alternatives, and the Draft EIR, and to explain how the public can participate in the CPUC decision-making process, the CPUC will hold informational workshops as shown in Table 1 below. These informal workshops are an opportunity to speak with the specialists who contributed to the Draft EIR and ask questions. At the start of each workshop, a brief presentation will summarize the EIR process, the Proposed Project and alternatives evaluated, the conclusions of the Draft EIR, and the decision-making process. Copies of presentation sides will be available at all workshops, so attendance at the presentation at the beginning of the workshop is not required. While written comments may be submitted during these workshops, there will be no facilities to record oral comments.

Details on the informational workshops are shown in Table 1. Table 2 lists the public repository sites at which project documents may be reviewed, and Table 3 presents the organization of the Draft EIR.

**Table 1. Informational Workshops on the Draft EIR**

<b>Day &amp; Date</b>	<b>Monday, Sept. 28, 2015</b>	<b>Tuesday, Sept. 29, 2015</b>
<b>Time(s)</b>	<b>7 to 9 P.M.</b>	<b>2 to 4 P.M. and 7 to 9 P.M.</b>
<b>Address</b>	<b>DOUBLETREE GOLF RESORT SAN DIEGO</b> <b>Heritage Ballroom</b> <b>14455 Peñasquitos Drive</b> <b>San Diego, CA 92129</b>	<b>DOUBLETREE GOLF RESORT SAN DIEGO</b> <b>Heritage Ballroom</b> <b>14455 Peñasquitos Drive</b> <b>San Diego, CA 92129</b>

For additional information or to read the Draft EIR online, please go to the website presented on page 1 of this Notice.

**Table 2. Project Document Repository Sites**

Carmel Mountain Ranch Library	12095 World Trade Drive, San Diego, CA 92128
Mira Mesa Library	8405 New Salem St., San Diego, CA 92126
North University Community Branch Library	8820 Judicial Drive, San Diego, CA 92122
Oceanside Public Library	330 N. Coast Highway, Oceanside, CA 92054
Poway Branch, San Diego County Library	13137 Poway Road, Poway, CA 92064
Rancho Peñasquitos Library	13330 Salmon River Road, San Diego, CA 92129
Scripps Miramar Ranch Library	10301 Scripps Lake Drive, San Diego, CA 92131
University Community Library	4155 Governor Drive, San Diego, CA 92122

**Table 3. Contents and Organization of the Draft EIR**

<b>Volume 1</b>	<ul style="list-style-type: none"> <li>▪ Notice of Availability</li> <li>▪ Acronyms and Abbreviations</li> <li>▪ Glossary</li> <li>▪ Executive Summary</li> <li>- Impact Summary Tables</li> <li>▪ Chapter 1: Introduction</li> <li>▪ Chapter 2: Project Description</li> <li>▪ Chapter 3: Alternatives</li> </ul>	<ul style="list-style-type: none"> <li>▪ Chapter 4: Environmental Analysis</li> <li>- Section 4.1: Biological Resources</li> <li>- Section 4.2: Aesthetics</li> <li>- Section 4.3: Cultural Resources</li> <li>- Section 4.4: Paleontological Resources</li> <li>- Section 4.5: Geology, Soils, and Mineral Resources</li> <li>- Section 4.6: Hydrology and Water Resources</li> </ul>
	<ul style="list-style-type: none"> <li>▪ Chapter 4 (continued)</li> <li>- Section 4.7: Transportation and Traffic</li> <li>- Section 4.8: Noise</li> <li>- Section 4.9: Land Use and Planning</li> <li>- Section 4.10: Recreation</li> <li>- Section 4.11: Hazards and Hazardous Materials</li> <li>- Section 4.12: Fire and Fuels Management</li> <li>- Section 4.13: Air Quality</li> </ul>	<ul style="list-style-type: none"> <li>- Section 4.14: Greenhouse Gas Emissions</li> <li>- Section 4.15: Agriculture and Forestry</li> <li>- Section 4.16: Population and Housing</li> <li>- Section 4.17: Utilities and Public Service Systems</li> <li>▪ Chapter 5: Cumulative Impacts</li> <li>▪ Chapter 6: Comparison of Alternatives</li> <li>▪ Chapter 7: Other CEQA Considerations</li> <li>▪ Chapter 8: Report Preparation</li> <li>▪ Chapter 9: Mitigation Monitoring and Reporting Plan</li> </ul>
<b>Volume 2</b>	<p><b>Appendices</b></p>	
	<ul style="list-style-type: none"> <li>▪ App A. Detailed Project Route Maps</li> <li>▪ App B. Proposed Project Pole Details</li> <li>▪ App C. Magnetic Field Management Plan</li> <li>▪ App D. Alternatives Screening Report</li> <li>▪ App E. Detailed Alternative Route Maps</li> <li>▪ App F. Aesthetic Resources Supporting Information</li> <li>▪ App G. Biological Resources Supporting Information</li> <li>▪ App H. Cultural Resources Supporting Information</li> </ul>	<ul style="list-style-type: none"> <li>▪ App I. Draft Fire Prevention Plan</li> <li>▪ App J. Air Quality and Greenhouse Gas Supporting Information</li> <li>▪ App K. City of San Diego Multiple Species Conservation Plan Consistency Analysis</li> <li>▪ App L. SDG&amp;E Best Management Practices Manual</li> <li>▪ App M. Transportation and Traffic Supporting Information</li> <li>▪ App N. Hazards and Hazardous Materials Supporting Information</li> </ul>
<b>Volume 3</b>		





**ATTACHMENT 1**  
**DRAFT EIR PUBLIC REVIEW MATERIALS**

## **NEWSPAPER ADVERTISEMENTS**

---

**ATTACHMENT 1**  
**DRAFT EIR PUBLIC REVIEW MATERIALS**

*This page is intentionally left blank.*

This E-Sheet(r) is provided as conclusive evidence that the ad appeared in The San Diego Union-Tribune on the date and page indicated. You may not create derivative works, or in any way exploit or repurpose any content.

A10

THE SAN DIEGO UNION-TRIBUNE | THURSDAY • SEPTEMBER 17, 2015

## VA • No. 1 mental health issue for post-9/11 vets in S.D.: PTSD

FROM A1 national program that pays medical school debt over five years for qualified VA employees.

To be competitive, Gering said, he had to hike starting pay to about \$200,000 a year — more than he makes, he noted.

The average annual salary for psychiatrists in the United States is \$182,700, according to the Bureau of Labor Statistics.

One new VA psychiatrist said she enjoys treating veterans because it is gratifying to give back to that population of patriots — though it can be a challenging job, as people who saw combat are sometimes wrestling with weighty issues.

Dr. Jeanne Maglione joined the San Diego VA in 2014 as a psychiatrist assigned to primary care.

"Sometimes veterans share extremely heavy

things, and sometimes it is hard. ... But I also think that's in part what makes it feel like a good place to work," Maglione said. "It is heavy, but that's why it's also very meaningful to be able to help someone with things like that."

A graduate of UC San Diego's medical school, she trained at the neighboring VA hospital and knew she liked the work.

However, the employment landscape for American psychiatrists is vast and pretty competitive right now.

There are 4,000 regions of the country with a shortage of psychiatrists, meaning there are more than 30,000 people per psychiatrist in each of those areas, according to the U.S. Health Resources and Service Administration.

"I do think it is a time when psychiatrists have a lot of different types of opportunities that range



Dr. Jeanne Maglione with a patient from her office at the Mission Valley VA clinic. CHARLIE NEUMAN • U-T

from private practice to the public sector to any of these health systems that have a lot of openings," said Maglione, 42. "I considered a few different kinds of jobs. Obviously, it would have been possible for me to go into private practice and take cash-only patients."

Some industry watchers say cash-only offices are becoming more common, as psychiatrists try to avoid the paperwork that comes with insurance coverage.

Maglione said she also enjoys the mix of research,

teaching and clinical time offered by the VA system.

The San Diego VA will see about 20,000 mental health patients this fiscal year. That's up from nearly 7,500 in 2002, when the first post-9/11 veterans started trickling in.

Gering likes to point out that 20,000 people is enough to halfway fill Petco Park.

About 40 full-time psychiatrists supervise the prescription of drugs for these patients, and VA administrators are seeking to hire 10 more.

This generation of post-9/11 veterans — of which the largest cluster lives in the San Diego region — is more likely to have psychological diagnoses to be treated.

Nearly one in three post-9/11 veterans getting care at the San Diego VA has been diagnosed with a mental health issue, according to VA data.

"I think the stigma is reducing for everyone. Particularly, it is notable in the post-military community, so we have more people coming for mental health treatment," Gering said.

"Also, we have more veterans being (designated as) service-connected (for mental illnesses) than we have for prior conflicts," he added. "So if you have been rated as service-connected with a disability due to mental illness, my belief is you are more likely to seek treatment."

The No. 1 mental health issue among post-9/11 vets at the San Diego VA is PTSD — a diagnosis that is growing and is occurring at a higher rate than among veterans of all eras.

This year, among the Iraq and Afghanistan war veterans getting care in San Diego, about 27 percent have a PTSD diagnosis. That's up from 18.5 percent in 2010.

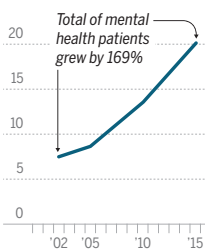
Meanwhile, among San Diego vets of all eras, about 15 percent currently are diagnosed with PTSD.

## Veterans' mental health in San Diego

The San Diego VA Healthcare system saw a steep climb in mental health patients once post-9/11 veterans began seeking care ...

### Mental health patients at the San Diego VA

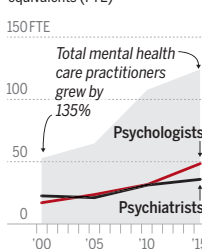
25 thousand



... at the same time, the system's number of mental health providers lagged behind the patient growth rate. A national shortage of psychiatrists is one reason.

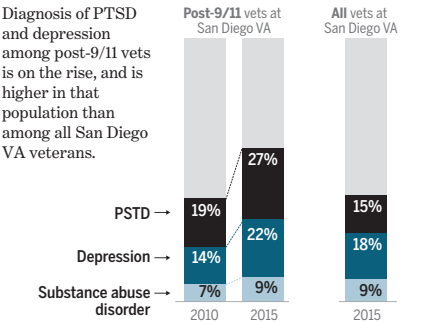
### San Diego VA mental health practitioners

Shown in full-time equivalents (FTE)



### Diagnosed mental issues

As a percentage of veterans in the San Diego VA Healthcare System



Source: San Diego VA Health Care System

JEANNETTE STEELE & AARON STECKELBERG • U-T

The other top post-9/11 diagnoses are depression, at nearly 22 percent of San Diego VA patients of that generation, and substance abuse disorder, at 9.4 percent.

Standard treatment for PTSD is group or individual therapy and, in many cases, medication such as antidepressants.

The therapy is largely conducted by a Ph.D. psychologist, Gering said. The San Diego VA has added those at a faster clip than psychiatrists, in part because they get plenty of applicants from that field, he explained.

Medications must be managed by a psychiatrist. However, the San Diego VA since 2010 has added 10 mental health nurse practitioners who are allowed to supervise drug prescriptions as well.

Maglione said she spends up to an hour with new patients to get a feel for their situation before opening her prescription pad. Follow-ups may only require

30 minutes.

In the complicated math surrounding VA wait times, San Diego may be seeing some progress.

The VA began posting data after a national scandal last year over veterans waiting too long for doctors of all kinds.

Last August, a new San Diego patient was quoted a 40-day wait for a mental health appointment on average.

But that request was usually filled much quicker as cancellations arose. Looking at completed appointments, the average new patient wait time was 14 days last summer.

The VA now lists only an aggregate wait time for both new and existing mental health patients.

In San Diego, that wait is 12 days. Gering said the actual wait time for new mental health patients is nine to 10 days.

jen.steele@suniontribune.com  
Twitter: @jensteeley

## You are the Missing Piece



## VOLUNTEER FOR EBOLA RESEARCH

Volunteers aged 18 to 50 are needed for an Ebola vaccine research study.

### Participants may receive:

- ✓ Compensation for Time and Travel up to \$1500.00
- ✓ Study Related Treatment at No Cost
- ✓ Compensation for new participant referrals

Participants will not get Ebola by participating in study.  
Call today, enrollment is limited.

844-RX STUDY

Participate@optimalsites.net

www.optimalsites.net

### Are you over 50 with frustrating dental problems?

## Relax with "Peace of Mind" Adult Dentistry!



- Laser Gum Treatment - first and only FDA approved, (new breakthrough in dentistry)
- If you're not satisfied with your CPAP machine, we have alternative care
- Handle major dental work easily and comfortably
- Most teeth can be repaired in just one visit

### What is "Peace of Mind" Adult Dentistry?

Dr. Obradovic listens carefully first, and then dramatically improves her patients' appearance, dental health and their ability to chew naturally.

### Special Offer!

Private Consultation with Dr. Obradovic - No Obligation

- Full examination
- Digital Intraoral Camera images
- Digital X-rays, As Needed (up to 6)
- All of your questions answered

\$401 Value

FREE with this ad.

Available for Saturday and evening appointments.

### Who are candidates for Adult Dentistry?

Adults who are 50+ and:

- Avoided dentistry for years and NOW need extensive treatment
- Have complex dental work done by one doctor with advanced clinical skills and technology
- Want most of your specialty dental needs to be handled in one office

### What problems can be treated with Adult Dentistry?

- Gum disease, bleeding gums, and bone loss
- Loose or poor-fitting dentures • Dental Implants • Broken or Missing Teeth
- Smile Makeovers • Extractions and how to Avoid them
- Root Canals and how to Prevent them
- Same day dentistry • Sleep disorders (like snoring and Sleep Apnea)

### Experience You Can Trust

Dr. Valentina Obradovic has over 20 years of experience and advanced training in treating complex dental problems with the latest developments in conservative dentistry. She is particularly known for having pioneered the use of non-surgical laser gum treatments in San Diego County and for her emphasis on advanced cosmetic and restorative dental techniques.

### ADRIATIC DENTAL

San Marcos / La Jolla

Near Restaurant Row  
960 W. San Marcos Blvd., Suite 110  
San Marcos, CA 92078



Dr. Valentina Obradovic

CALL TODAY 760-621-3381 or visit [www.valentinadds.com](http://www.valentinadds.com)

### Notice of Availability for a Draft Environmental Impact Report and Informational Workshops for the Sycamore-Peñasquitos 230-Kilovolt Transmission Line Project

The California Public Utilities Commission (CPUC) has prepared a Draft Environmental Impact Report (EIR) to evaluate the potential environmental impacts from the San Diego Gas & Electric (SDG&E) proposed Sycamore-Peñasquitos 230-Kilovolt Transmission Line Project for the construction and operation of an approximately 16.7-mile long transmission line. Public input is requested on the Proposed Project, alternatives and accuracy of the Draft EIR by Nov. 2, 2015.

### The CPUC welcomes your input!

#### HOW TO COMMENT ON THE DRAFT EIR:

- Submit written comments at one of the three informational workshops
- Mail comments to: California Public Utilities Commission c/o Panorama Environmental, Inc. One Embarcadero Center, Suite 740 San Francisco, CA 94111
- Fax comments to: (650) 373-1211
- Email comments to: [sycamorepenasquitos@panoramaenv.com](mailto:sycamorepenasquitos@panoramaenv.com)

Comments must be postmarked or received by fax or email no later than Nov. 2, 2015.

#### PROPOSED PROJECT: SDG&E proposes to construct and operate an approximately 16.7-mile long transmission line. The purpose of the project is to:

- Maintain long-term grid reliability in the absence of San Onofre Nuclear Generating Station generation
- Deliver energy more efficiently to the load center in San Diego
- Support deliverability of renewable resources identified in SDG&E's Renewable Portfolio Standard portfolio

### INFORMATIONAL WORKSHOPS

DoubleTree Golf Resort  
14455 Peñasquitos Drive  
San Diego, CA 92129

Monday, Sept. 28, 2015  
7 - 9 p.m.

Tuesday, Sept. 29, 2015  
2 - 4 p.m. and 7 - 9 p.m.

The Draft EIR is available for review beginning Sept. 17, 2015, on

<http://www.cpuc.ca.gov/Environment/Info/panoramaenv/sycamore-penasquitos/index.html>

and at the following public libraries: Camel Mountain, Mira Mesa, North University Community Branch, Oceanside, Poway, Rancho Peñasquitos, Scripps Miramar Ranch and University Community.



Ad Number: **3582381-1** Client Name: **KATZ & ASSOCIATES, INC**  
Insertion Number: **2 x 5** Advertiser: **CALIFORNIA PUBLIC UTILITIES COMMISS...**  
Size: **B&W** Section/Page/Zone: **Main News/A014/Full Run**  
Color Type: Description:



Navy SEALs climb a caving ladder during a search and seizure training exercise. Women may soon be joining the elite Navy force. NAVY PHOTO

## LOSEY • SEALs commander sees no obstacles to admitting women to elite Navy fighting unit

FROM A1  
remain closed to women.  
Dunford became chairman of the Joint Chiefs of Staff on Friday.

While Losey outlines many of the same concerns as the Marine Corps has about how women will fare in some of the military's most demanding jobs, he comes to a different conclusion.

Allowing all qualified candidates to "test themselves" against the difficult physical, mental and other standards required to become a special warfare officer "is ultimately the right thing to do and is clearly consistent with the struggle over cen-

turies to fully represent our nation's values of fairness and equal opportunity," his memo opens.

But Losey states upfront that putting women in the commando jobs is not expected to increase the units' ability to fight in combat. In fact, he said, the effort to integrate the units and change the culture "will channel focus and energy away from core combat readiness and effectiveness efforts."

He said that while there may be "external" pressure to adjust the standards so that women can successfully pass, it's not likely that would succeed. The standards, he

said, have been honed over the past 50 years, and that 70 percent of men fail.

"With the recent female graduates from the Ranger course, there may be an expectation that there will soon be female graduates from BUD/S," he said, referring to the SEALs course. "We will welcome any candidate who meets standards."

Losey recommended that Special Warfare Command should manage expectations, and to the extent possible remove gender identity from the application process so that only the most qualified will be selected.

He downplayed the risk

of women disrupting social cohesion, saying that while members of the special warfare units may not want women serving alongside them, "acceptance is expected to increase over time." Men, however, will have to adapt to female teammates and the women may face unwarranted scrutiny, isolation and ostracization.

He said there are about 500 women serving in certain Naval Special Warfare Command jobs, including in combat support missions, and they have been deploying with units for more than a decade.

One of the highest risks, he said, involves physical and medical challenges for women. Over the past several years, as the military services have studied and debated the integration of women into combat, there have been persistent concerns about how well they can handle the more extreme physical demands of the jobs and the possible long-term medical impact that may go with it.

Losey said officials expect higher injury rates for women during training, and called for more education and study on the issue.

He also noted that the initial female candidates would be subject to significant media attention that would distract the staff and students and could jeopardize the long-standing mandate that commandos' identities be protected. He recommended that media access be controlled and prohibited at times.

One former SEAL said the time has come for women to join the elite force, but he wants to see the SEALs hang onto their current requirements for entry.

"I think Admiral Losey's comments are well-measured. We live in the 21st century where women have proven they can compete on the same level as men," said Brandon Webb, who served until 2006. "There will always be fear of change and integration growing pains. Let women serve in (special operations forces) units, just keep the same standards."

The military services are expected to send their final recommendations to Defense Secretary Ash Carter soon.

In January 2013, then-Defense Secretary Leon Panetta and Joint Chiefs Chairman Gen. Martin Dempsey ordered that a quarter-million positions open regardless of gender. They called for sweeping reviews of the physical requirements for combat jobs and gave the military services until January 2016 to argue if any positions should remain closed to women.

Baldor writes for The Associated Press.

Staff writer Jeanette Steele contributed to this report.

## SUSPECT DETAINED IN ATTACK ON MAUSOLEUMS

ASSOCIATED PRESS

THE HAGUE, NETHERLANDS

An alleged Islamic extremist charged with involvement in the destruction of religious buildings in the historic city of Timbuktu in Mali in 2012 has been arrested and was sent to the International Criminal Court early today to face justice.

Ahmad Al Mahdi Al Faqi, known as Abu Tourab, is the first suspect in the court's custody charged with the war crime of destroying religious or historical monuments.

Al Faqi was surrendered to the court by Niger based on an arrest warrant issued a week ago and transferred to The Hague early today. No date was immediately set for his arraignment.

The court said in a statement he was a member of Ansar Dine, an Islamic extremist group with links to al-Qaeda that ruled across northern Mali in 2012.

He is charged in the destruction of 10 historic buildings including mausoleums and a mosque in Timbuktu.

## Recently married?



Share your wedding story with friends and family in the new San Diego Union-Tribune weddings section every Sunday. Tell us about a special guest, your beautiful venue and, of course, what the bride wore. We have a variety of options for you to choose from when it comes to your wedding announcement, including a simple, free notice, or larger spaces that include room for your beautiful wedding photo.

### Weddings

The San Diego  
Union-Tribune

If you are interested in sharing your story, please contact a representative at the Union-Tribune by calling (866) 441-4140 or send an email to [weddingannouncements@sduniontribune.com](mailto:weddingannouncements@sduniontribune.com)

### Notice of Availability for a Draft Environmental Impact Report and Informational Workshops for the Sycamore-Peñasquitos 230-Kilovolt Transmission Line Project

The California Public Utilities Commission (CPUC) has prepared a Draft Environmental Impact Report (EIR) to evaluate the potential environmental impacts from the San Diego Gas & Electric (SDG&E) proposed Sycamore-Peñasquitos 230-Kilovolt Transmission Line Project for the construction and operation of an approximately 16.7-mile long transmission line. Public input is requested on the Proposed Project, alternatives and accuracy of the Draft EIR by Nov. 2, 2015.

#### The CPUC welcomes your input!

##### HOW TO COMMENT ON THE DRAFT EIR:

- Submit written comments at one of the three informational workshops
- Mail comments to: California Public Utilities Commission c/o Panorama Environmental, Inc. One Embarcadero Center, Suite 740 San Francisco, CA 94111
- Fax comments to: (650) 373-1211
- Email comments to: [sycamorepenasquitos@panoramaenv.com](mailto:sycamorepenasquitos@panoramaenv.com)

Comments must be postmarked or received by fax or email no later than Nov. 2, 2015.

**PROPOSED PROJECT:** SDG&E proposes to construct and operate an approximately 16.7-mile long transmission line. The purpose of the project is to:

- Maintain long-term grid reliability in the absence of San Onofre Nuclear Generating Station generation
- Deliver energy more efficiently to the load center in San Diego
- Support deliverability of renewable resources identified in SDG&E's Renewable Portfolio Standard portfolio

#### INFORMATIONAL WORKSHOPS

DoubleTree Golf Resort  
14455 Peñasquitos Drive  
San Diego, CA 92129

**Monday, Sept. 28, 2015**  
7 - 9 p.m.

**Tuesday, Sept. 29, 2015**  
2 - 4 p.m. and 7 - 9 p.m.

The Draft EIR is available for review beginning Sept. 17, 2015, on

[http://www.cpuc.ca.gov/Environment/info/panoramaenv/sycamore\\_penasquitos/index.html](http://www.cpuc.ca.gov/Environment/info/panoramaenv/sycamore_penasquitos/index.html)

and at the following public libraries: Camel Mountain, Mira Mesa, North University Community Branch, Oceanside, Poway, Rancho Peñasquitos, Scripps Miramar Ranch and University Community.

# FRIENDS & FAMILY SALE

FRIDAY, SEPT 25 - SUNDAY, OCT 4

## SAVE 20% OFF

ALL REGULAR PRICED ITEMS

## SAVE 10% OFF

ALL SALE PRICED ITEMS

\*Offers valid on purchase of \$999 or more.

**LOW PRICE GUARANTEE**  
Bring in any competitors ad or written quote and we will beat their best price on the same items.

**THE BEST SELECTION**  
Choose from our great selection of quality outdoor furniture & more to create the perfect living spaces.

*Family Owned*  
**SINCE 1979**

## TODAY'S PATIO®

furniture & decor

PHOENIX  
12419 N Tatum Blvd  
NE Corner Cactus & Tatum  
(602) 996-8100

GLENDALE  
20028 N 67th Ave  
SW Corner 67th & Loop 101  
(623) 344-5000

SCOTTSDALE  
15500 N Greenway-Hayden Loop  
2 Blocks east of Scottsdale Rd  
(480) 367-9700

GILBERT  
2244 E Williams Field Rd  
San Tan Village near Best Buy  
(480) 289-6400

TUCSON  
7685 N Oracle Rd  
Just north of Ina next to Sprouts  
(520) 230-7999

OUTLET CENTER  
23616 N 19th Avenue  
Just north of Pinnacle Peak Rd  
(623) 344-5555

SAN DIEGO  
7371 Clairemont Mesa Blvd  
Just east of the 805 freeway  
(858) 427-3300

**SPECIAL FINANCING**  
**6 MONTHS NO INTEREST**  
On approved credit. Some restrictions apply.

SHOWROOM HOURS: Mon-Sat 10-6 Sun 10-5    OUTLET HOURS: Mon-Sat 9-4 Sun 10-4

Shop online at [TodaysPatio.com](http://TodaysPatio.com)

Prices and special offers are valid through 10/4/15 and subject to change thereafter. Offers not valid on purchases at [www.todayspatio.com](http://www.todayspatio.com). Offers valid with purchase of \$999 or more. Save 20% off all regularly priced items. Save 10% off all sale priced items. No adjustments to prior purchases. Valid on open stock merchandise only unless otherwise specified. Not valid on special orders or services. Regular delivery rates and fees apply. Offers not valid on Weber, Big Green Egg or pool products. Other restrictions may apply. See store for complete terms and conditions.

ATTACHMENT 1  
DRAFT EIR PUBLIC REVIEW MATERIALS

## FLIER AND FLIER LOCATIONS

---

**ATTACHMENT 1**  
**DRAFT EIR PUBLIC REVIEW MATERIALS**

*This page is intentionally left blank.*





# CALIFORNIA PUBLIC UTILITIES COMMISSION

## INFORMATIONAL WORKSHOPS

The California Public Utilities Commission (CPUC) has prepared a Draft Environmental Impact Report (EIR) to evaluate the potential environmental impacts from the San Diego Gas & Electric (SDG&E) proposed Sycamore-Peñasquitos 230-Kilovolt Transmission Line Project for the construction and operation of an approximately 16.7-mile long transmission line.

The CPUC is hosting three informational workshops at the **DoubleTree Golf Resort, located at 14455 Peñasquitos Drive, San Diego, 29129**. The CPUC welcomes your attendance and comments on the Proposed Project, alternatives and accuracy of the Draft EIR.

**Monday, Sept. 28, 2015**  
7 – 9 p.m.

**Tuesday, Sept. 29, 2015**  
2 – 4 p.m. and 7 – 9 p.m.

The Draft EIR is available for public viewing on the project website listed below and at the following public libraries:

Carmel Mountain Ranch Library	12095 World Trade Drive, San Diego, CA 92128
Mira Mesa Library	8405 New Salem St., San Diego, CA 92126
North University Community Branch Library	8820 Judicial Drive, San Diego, CA 92122
Oceanside Public Library	330 N. Coast Highway, Oceanside, CA 92054
Poway Branch, San Diego County Library	13137 Poway Road, Poway, CA 92064
Rancho Peñasquitos Library	13330 Salmon River Road, San Diego, CA 92129
Scripps Miramar Ranch Library	10301 Scripps Lake Drive, San Diego, CA 92131
University Community Library	4155 Governor Drive, San Diego, CA 92122

For further information, including how to submit comments on the Draft EIR, please visit [http://www.cpuc.ca.gov/Environment/info/panoramaenv/Sycamore\\_Penasquitos/index.html](http://www.cpuc.ca.gov/Environment/info/panoramaenv/Sycamore_Penasquitos/index.html).

**ATTACHMENT 1**  
**DRAFT EIR PUBLIC REVIEW MATERIALS**

**Flier Delivery Locations**

Type	Location	Address	City	State	Zip	Delivery Notes
Library	North University Community Branch Library	8820 Judicial Drive	San Diego	CA	92122	Confirmed that EIR is available for public to view
Library	University Community Library	4155 Governer Drive	San Diego	CA	92122	Confirmed that EIR is available for public to view
Park	Torrey Hills Park	Calle Mejillones & Calle Mar de Mariposa	San Diego	CA	92130	
Business	Vons	4267 Carmel Mountain Road	San Diego	CA	92130	Vons doesn't have bulletin board. Posted in Starbucks in same center.
Park	Torrey Highlands Dog Park	4792 Torrey Circle	San Diego	CA	92130	
Shopping Center	Torrey Corner Shopping Center	1130 E. Ocean Air Drive #110	San Diego	CA	92130	Same center as the Vons. Posted in Starbucks.
Recreation Center	Ocean Air Recreation Center	4770 Fairport Way	San Diego	CA	92130	Rec. Center was closed. Taped flier outside.
Neighborhood	Manorgate Drive and Laurelcrest Drive	Manorgate Drive and Laurelcrest Drive	San Diego	CA	92130	
Park	Sage Canyon Park	5252 Harvest Run Drive	San Diego	CA	92130	
Neighborhood	Briarlake Woods Drive	Briarlake Woods	San Diego	CA	92130	
Park	Del Mar Trails Park	4450 Del Mar Trails Road	San Diego	CA	92130	
Park	Carmel Del Mar Park	12345 Carmel Park Drive	San Diego	CA	92130	Did not post at this park because you have to go through a school or peoples yards to get to it.
Park	Carmel Knolls Park	4850 Carmel Knolls Drive	San Diego	CA	92130	
Business	Evergreen Nursery	13650 Carmel Valley Road	San Diego	CA	92130	
Park	Torrey Del Mar Park	Intersection of Torrey Del Mar Lane and Kerry Lane	San Diego	CA	92130	
Neighborhood	Santa Fe Canyon Place	6941 Santa Fe Canyon Place	San Diego	CA	92129	



**ATTACHMENT 1**  
**DRAFT EIR PUBLIC REVIEW MATERIALS**

Type	Location	Address	City	State	Zip	Delivery Notes
Park	Hilltop Community Park	9711 Oviedo Way	San Diego	CA	92129	
Neighborhood	Rasmussen Way	14134 Rasmussen Way	San Diego	CA	92128	
Park	Black Mountain Ranch Park	12115 Black Canyon Mountain Road	San Diego	CA	92129	Did not post because construction around park blocked entrance
Neighborhood	Via Penoles	Intersection of Avenida Sivrita and Via Penoles	San Diego	CA	92131	
Neighborhood	Office of La Serena Apartments	15639 Avenida Alcahofa	San Diego	CA	92128	
School District	Poway Unified School District Office	15250 Avenue of Science	San Diego	CA	92128	
Library	Carmel Mountain Ranch Branch Library	12095 World Trade Drive	San Diego	CA	92128	Confirmed that EIR is available for public to view
Shopping Center	Plaza Rancho Penasquitos	9845-9975 Carmel Mountain Road	San Diego	CA	92129	
Neighborhood	Freeport Court	Intersection of Freeport Road and Freeport Court	San Diego	CA	92129	
Neighborhood	Quinton Road	13701-13755 Quinton Road	San Diego	CA	92129	
Neighborhood	Sundevil Way	Intersection of Sundevil Way and Bassmore Drive	San Diego	CA	92129	
Library	Rancho Peñasquitos Branch Library	13330 Salmon River Road	San Diego	CA	92129	Dropped flyer but they did not have the EIR yet although FedEx said it had been delivered and received.
Park	Penasquitos Creek Park	7930 Park Village Drive	San Diego	CA	92129	
Recreation Center	Canyonside Recreation Facility	12350 Black Mountain Road	San Diego	CA	92129	
Park	Views West Park	12958 La Tortola	San Diego	CA	92129	

**ATTACHMENT 1**  
**DRAFT EIR PUBLIC REVIEW MATERIALS**

Type	Location	Address	City	State	Zip	Delivery Notes
Park	Sabre Springs Park	Intersection of Sabre Springs Parkway and Evening Creek Drive South	San Diego	CA	92128	
Neighborhood	Harvest View Way	10401-10433 Harvest View Way	San Diego	CA	92128	
Park	Spring Canyon Park	10907 Scripps Poway Parkway	San Diego	CA	92131	
Business	Nationallink, Inc.	10641 Scripps Summit Court	San Diego	CA	92131	
Community Center	Scripps Ranch Community Services	11885 Cypress Canyon Road	San Diego	CA	92131	
Park	Butterfly Park	11885 Cypress Canyon Road	San Diego	CA	92131	
Neighborhood	Aldercrest Point	11722 Aldercrest Point	San Diego	CA	92131	
Recreation Center	Scripps Ranch Recreation Center	11454 Blue Cypress Drive	San Diego	CA	92131	
Park	Stonebridge Park	15030 Sycamore Trail Road	San Diego	CA	92131	
Park	Cypress Canyon Neighborhood Park	11470 Cypress Canyon Road	San Diego	CA	92131	
Library	Poway Branch, San Diego County Library	13137 Poway Road	Poway	CA	92064	Confirmed that EIR is available for public to view
Library	Scripps Miramar Ranch Library	10301 Scripps Lake Drive	San Diego	CA	92131	Confirmed that EIR is available for public to view
Park	Hourglass Community Park	10440 Black Mountain Road	San Diego	CA	92126	
Business	Miramar Memorial Golf Course	3550 Anderson Ave.	San Diego	CA	92126	
Library	Mira Mesa Library	8405 New Salem St.	San Diego	CA	92126	Confirmed that EIR is available for public to view
Park	Camino Ruiz Neighborhood Park	11489 Camino Ruiz	San Diego	CA	92126	
Library	Oceanside Public Library	330 N. Coast Highway	Oceanside	CA	92054	Confirmed that EIR is available for public to view

**ATTACHMENT 1**  
**DRAFT EIR PUBLIC REVIEW MATERIALS**

**DRAFT EIR PUBLIC WORKSHOP SIGN-IN SHEETS**

---

**ATTACHMENT 1**  
**DRAFT EIR PUBLIC REVIEW MATERIALS**

*This page is intentionally left blank.*



# Sycamore-Peñasquitos 230-kV Transmission Line Project CPUC Draft EIR Informational Workshop Sign-In Sheet

Location: San Diego

Date: 9/28/15

Name (please print)	Organization (if applicable)	Would you like to be added to the EIR mailing list?	Mailing Address (including city, state and zip)	How did you hear about today's meeting?
1. GLENN HACHADORIAN		<input checked="" type="checkbox"/> YES <input type="checkbox"/> NO	8420 Rice Ct. SD, CA 92127	MAIL
2. Lynne Middleton Abbe Williams		<input checked="" type="checkbox"/> YES <input type="checkbox"/> NO	9546 Babauta Rd SD, CA 92129	
3. BRAD CARTER	SDGE	<input type="checkbox"/> YES <input checked="" type="checkbox"/> NO		EMAIL
4. Bob Leiter		<input checked="" type="checkbox"/> YES <input type="checkbox"/> NO	9402 Chabola Rd SD 92129	Mail
5. Bill Huff		<input checked="" type="checkbox"/> YES <input type="checkbox"/> NO	8214 Bryn Glen 92129	MAIL
6. Sarah Bailey		<input checked="" type="checkbox"/> YES <input type="checkbox"/> NO	13650 Quinton Rd 92129	mail.
7.		<input type="checkbox"/> YES <input type="checkbox"/> NO		
8.		<input type="checkbox"/> YES <input type="checkbox"/> NO		
9.		<input type="checkbox"/> YES <input type="checkbox"/> NO		
10.		<input type="checkbox"/> YES <input type="checkbox"/> NO		



**Sycamore-Peñasquitos  
230-kV Transmission Line Project  
CPUC Draft EIR Informational Workshop Sign-In Sheet**

Location: San Diego

Date: 9/28/15

	Name (please print)	Organization (if applicable)	Would you like to be added to the EIR mailing list?	Mailing Address (including city, state and zip)	How did you hear about today's meeting?
1.	SANDRA Wetzel-Smith	Scrapps Ranch Planning Group	<input checked="" type="checkbox"/> YES <input type="checkbox"/> NO	10275 Pinecastle ST, San Diego 92131	SRPG notification
2.	MING HU		<input checked="" type="checkbox"/> YES <input type="checkbox"/> NO		
3.	Wallace Wurfack	Scrapps Ranch Planning Group	<input checked="" type="checkbox"/> YES <input type="checkbox"/> NO	12517 Fairbrook Rd San Diego, CA 92131	PUC LETTER
4.	Josh Taylor	TRC	<input type="checkbox"/> YES <input checked="" type="checkbox"/> NO		Word of Mouth
5.			<input type="checkbox"/> YES <input type="checkbox"/> NO		
6.			<input type="checkbox"/> YES <input type="checkbox"/> NO		
7.			<input type="checkbox"/> YES <input type="checkbox"/> NO		
8.			<input type="checkbox"/> YES <input type="checkbox"/> NO		
9.			<input type="checkbox"/> YES <input type="checkbox"/> NO		
10.			<input type="checkbox"/> YES <input type="checkbox"/> NO		



**Sycamore-Peñasquitos  
230-kV Transmission Line Project  
CPUC Draft EIR Informational Workshop Sign-In Sheet**

Location: San Diego Date: 1/28/15

Name (please print)	Organization (if applicable)	Would you like to be added to the EIR mailing list?	Mailing Address (including city, state and zip)	How did you hear about today's meeting?
1. Beverly Wulfeck		<input type="checkbox"/> YES <input checked="" type="checkbox"/> NO		
2.		<input type="checkbox"/> YES <input type="checkbox"/> NO		
3.		<input type="checkbox"/> YES <input type="checkbox"/> NO		
4.		<input type="checkbox"/> YES <input type="checkbox"/> NO		
5.		<input type="checkbox"/> YES <input type="checkbox"/> NO		
6.		<input type="checkbox"/> YES <input type="checkbox"/> NO		
7.		<input type="checkbox"/> YES <input type="checkbox"/> NO		
8.		<input type="checkbox"/> YES <input type="checkbox"/> NO		
9.		<input type="checkbox"/> YES <input type="checkbox"/> NO		
10.		<input type="checkbox"/> YES <input type="checkbox"/> NO		



# Sycamore-Peñasquitos 230-kV Transmission Line Project CPUC Draft EIR Informational Workshop Sign-In Sheet

11/19/2014 10:00 AM

Location: \_\_\_\_\_

Date: \_\_\_\_\_

	Name (please print)	Organization (if applicable)	Would you like to be added to the EIR mailing list?	Mailing Address (including city, state and zip)	How did you hear about today's meeting?
1.	Frank Landis	CNPS-SD	<input checked="" type="checkbox"/> YES <input type="checkbox"/> NO	7885 Via Montebello #5, San Diego, CA 92129	posting
2.	Mike URIEUE +1	Self.	<input checked="" type="checkbox"/> YES <input type="checkbox"/> NO	12327 MARVIN Rd. San Diego CA 92129	Posting
3.	Beth CARTER	SDG&E	<input type="checkbox"/> YES <input type="checkbox"/> NO		
4.	Grazyna Krajewska		<input type="checkbox"/> YES <input type="checkbox"/> NO	4657 Calle Verde Armonia, SD 92130	mail
5.	Jan Kane	MENPC	<input type="checkbox"/> YES <input checked="" type="checkbox"/> NO	14395 Whispering Ridge Rd SD. 92131	mail i email
6.	Marsha Ruetter		<input type="checkbox"/> YES <input type="checkbox"/> NO	12545 Pothos Ln. 92129	
7.	Med Dyer		<input checked="" type="checkbox"/> YES <input type="checkbox"/> NO	9293 Calle de Vista Oeste	maile
8.			<input type="checkbox"/> YES <input type="checkbox"/> NO		
9.			<input type="checkbox"/> YES <input type="checkbox"/> NO		
10.			<input type="checkbox"/> YES <input type="checkbox"/> NO		





# Sycamore-Peñasquitos 230-kV Transmission Line Project CPUC Draft EIR Informational Workshop Sign-In Sheet

Location: \_\_\_\_\_ Date: \_\_\_\_\_

Name (please print)	Organization (if applicable)	Would you like to be added to the EIR mailing list?	Mailing Address (including city, state and zip)	How did you hear about today's meeting?
1. Stuart Gross	SR Planning Grp	<input type="checkbox"/> YES <input checked="" type="checkbox"/> NO		
2. LEGAN AND SCHULTZ		<input checked="" type="checkbox"/> YES <input type="checkbox"/> NO	CFHCLFSR @ YAHOO.COM	
3.		<input type="checkbox"/> YES <input type="checkbox"/> NO		
4.		<input type="checkbox"/> YES <input type="checkbox"/> NO		
5.		<input type="checkbox"/> YES <input type="checkbox"/> NO		
6.		<input type="checkbox"/> YES <input type="checkbox"/> NO		
7.		<input type="checkbox"/> YES <input type="checkbox"/> NO		
8.		<input type="checkbox"/> YES <input type="checkbox"/> NO		
9.		<input type="checkbox"/> YES <input type="checkbox"/> NO		
10.		<input type="checkbox"/> YES <input type="checkbox"/> NO		



**Sycamore-Peñasquitos  
230-kV Transmission Line Project  
CPUC Draft EIR Informational Workshop Sign-In Sheet**

Location: \_\_\_\_\_

Date: \_\_\_\_\_

	Name (please print)	Organization (if applicable)	Would you like to be added to the EIR mailing list?	Mailing Address (including city, state and zip)	How did you hear about today's meeting?
1.	Louie Lu		<input type="checkbox"/> YES <input type="checkbox"/> NO	1356 Chamard Way. San Diego, CA 92130	mail
2.	GARY Chamard		<input type="checkbox"/> YES <input checked="" type="checkbox"/> NO	13762 Bassmore Dr San Diego CA 92129	"
3.			<input type="checkbox"/> YES <input type="checkbox"/> NO		
4.			<input type="checkbox"/> YES <input type="checkbox"/> NO		
5.			<input type="checkbox"/> YES <input type="checkbox"/> NO		
6.			<input type="checkbox"/> YES <input type="checkbox"/> NO		
7.			<input type="checkbox"/> YES <input type="checkbox"/> NO		
8.			<input type="checkbox"/> YES <input type="checkbox"/> NO		
9.			<input type="checkbox"/> YES <input type="checkbox"/> NO		
10.			<input type="checkbox"/> YES <input type="checkbox"/> NO		



# Sycamore-Peñasquitos 230-kV Transmission Line Project CPUC Draft EIR Informational Workshop Sign-In Sheet

Location: \_\_\_\_\_ Date: \_\_\_\_\_

	Name (please print)	Organization (if applicable)	Would you like to be added to the EIR mailing list?	Mailing Address (including city, state and zip)	How did you hear about today's meeting?
1.	Sandra Tolson		<input type="checkbox"/> YES <input checked="" type="checkbox"/> NO	8040 Eclipse Rd. S.D. CA 92129	P.O. Next door
2.	Steve Schray		<input checked="" type="checkbox"/> YES <input type="checkbox"/> NO	12064 Mannix Rd S.D. CA 92129	" "
3.			<input type="checkbox"/> YES <input type="checkbox"/> NO		
4.			<input type="checkbox"/> YES <input type="checkbox"/> NO		
5.			<input type="checkbox"/> YES <input type="checkbox"/> NO		
6.			<input type="checkbox"/> YES <input type="checkbox"/> NO		
7.			<input type="checkbox"/> YES <input type="checkbox"/> NO		
8.			<input type="checkbox"/> YES <input type="checkbox"/> NO		
9.			<input type="checkbox"/> YES <input type="checkbox"/> NO		
10.			<input type="checkbox"/> YES <input type="checkbox"/> NO		



# Sycamore-Peñasquitos 230-kV Transmission Line Project CPUC Draft EIR Informational Workshop Sign-In Sheet

Location: \_\_\_\_\_

Date: 9-29-15

	Name (please print)	Organization (if applicable)	Would you like to be added to the EIR mailing list?	Mailing Address (including city, state and zip)	How did you hear about today's meeting?
1.	Patricia Hatch		<input checked="" type="checkbox"/> YES <input type="checkbox"/> NO	12246 Crisscross Ln. SD 92129	Next Door
2.	MARVIN NILES SR	PG	<input type="checkbox"/> YES <input type="checkbox"/> NO	11328 TRISUNA AVE SD 92131	OTHER PLANNING MEETINGS
3.	Josie Bravo	HOMER BRUNER	<input checked="" type="checkbox"/> YES <input type="checkbox"/> NO		ON MAILING LIST
4.	Emily Moustafa		<input checked="" type="checkbox"/> YES <input type="checkbox"/> NO	11113 Del Diablo St. SD 92129	" "
5.			<input type="checkbox"/> YES <input type="checkbox"/> NO		
6.			<input type="checkbox"/> YES <input type="checkbox"/> NO		
7.			<input type="checkbox"/> YES <input type="checkbox"/> NO		
8.			<input type="checkbox"/> YES <input type="checkbox"/> NO		
9.			<input type="checkbox"/> YES <input type="checkbox"/> NO		
10.			<input type="checkbox"/> YES <input type="checkbox"/> NO		



**Sycamore-Peñasquitos  
230-kV Transmission Line Project  
CPUC Draft EIR Informational Workshop Sign-In Sheet**

Location: \_\_\_\_\_

Date: \_\_\_\_\_

	Name (please print)	Organization (if applicable)	Would you like to be added to the EIR mailing list?	Mailing Address (including city, state and zip)	How did you hear about today's meeting?
1.	BRAD CARTER	SDG&E	<input type="checkbox"/> YES <input type="checkbox"/> NO		r
2.	MORIANNE PETERSON	SDPL	<input type="checkbox"/> YES <input checked="" type="checkbox"/> NO		PAPER
3.	Jodie Collins	SDG&E	<input type="checkbox"/> YES <input type="checkbox"/> NO		
4.	Gabe Gutierrez	SDG&E	<input type="checkbox"/> YES <input type="checkbox"/> NO		
5.	John Krogmann		<input type="checkbox"/> YES <input type="checkbox"/> NO		mail
6.	Harvey Payne		<input type="checkbox"/> YES <input type="checkbox"/> NO		
7.			<input type="checkbox"/> YES <input type="checkbox"/> NO		
8.			<input type="checkbox"/> YES <input type="checkbox"/> NO		
9.			<input type="checkbox"/> YES <input type="checkbox"/> NO		
10.			<input type="checkbox"/> YES <input type="checkbox"/> NO		



**Sycamore-Peñasquitos  
230-kV Transmission Line Project  
CPUC Draft EIR Informational Workshop Sign-In Sheet**

Location: \_\_\_\_\_

Date: \_\_\_\_\_

Name (please print)	Organization (if applicable)	Would you like to be added to the EIR mailing list?	Mailing Address (including city, state and zip)	How did you hear about today's meeting?
1. JOHN McCOMBS		<input type="checkbox"/> YES <input checked="" type="checkbox"/> NO	13135 ROUNDUP AVE SD CA	EMAIL
2. CHARLIE McCOMBS		<input type="checkbox"/> YES <input checked="" type="checkbox"/> NO	" " " "	" "
3.		<input type="checkbox"/> YES <input type="checkbox"/> NO		
4.		<input type="checkbox"/> YES <input type="checkbox"/> NO		
5.		<input type="checkbox"/> YES <input type="checkbox"/> NO		
6.		<input type="checkbox"/> YES <input type="checkbox"/> NO		
7.		<input type="checkbox"/> YES <input type="checkbox"/> NO		
8.		<input type="checkbox"/> YES <input type="checkbox"/> NO		
9.		<input type="checkbox"/> YES <input type="checkbox"/> NO		
10.		<input type="checkbox"/> YES <input type="checkbox"/> NO		

**ATTACHMENT 1**  
**DRAFT EIR PUBLIC REVIEW MATERIALS**

**DRAFT EIR PUBLIC WORKSHOP PRESENTATION**

---

**ATTACHMENT 1**  
**DRAFT EIR PUBLIC REVIEW MATERIALS**

*This page is intentionally left blank.*





# SDG&E Proposed Sycamore-Peñasquitos 230-kV Transmission Line Project

Application No. A. 14-04-011



## Informational Workshops on Draft EIR

California Public Utilities Commission

September 28 and 29, 2015

# Workshop Presentation Agenda

---



- **Introduction of Speakers; Purpose and Overview of Workshop**  
*(Allison Turner, Katz & Associates)*
- **Project Milestones; CPUC Process After Draft EIR Comment Period**  
*(Billie Blanchard, CPUC)*
- **Description of Proposed Project; Impacts Identified; Alternatives Screening; Draft EIR Alternatives**  
*(Jeff Thomas, Panorama Environmental)*

# The Purpose of the Workshop

---



- To explain the Draft EIR review process
- To answer questions about the Proposed Project and alternatives in the Draft EIR
- To answer questions about the Draft EIR analysis
- To accept written comments on the Draft EIR

# Project Milestones

---



- **SDG&E Application to CPUC**
  - Submitted application for a Certificate of Public Convenience and Necessity (CPCN) in April 2014
  - CPUC assignments: Commissioner Picker and Administrative Law Judge Yacknin
  - Application deemed complete in July 2014
- **CEQA Scoping Process (August to September 2014)**
  - **Scoping meetings** in August in San Diego
  - **Scoping report** issued in September 2014
- **EIR Analysis and Alternatives Screening Process**
  - September 2014 to August 2015
- **Draft EIR released September 17, 2015**

# Process After Draft EIR Comment Period

---



- **Final EIR** is estimated to be released in December 2015. It will include responses to all comments, and revisions if required.

## **CPUC Process:**

- CPUC ALJ will be conducting a **Proceeding** on the project, including testimony, filing of briefs, and possibly Evidentiary Hearings
  - A schedule for the Proceeding will be established by the ALJ
- ALJ prepares **Proposed Decision** for consideration by full Commission.
  - CPUC vote on Proposed Decision anticipated early to mid-2016
  - EIR is referenced and the EIR is Certified in the **CPUC Decision**

# The EIR and CPUC Processes



Sycamore - Peñasquitos 230-kV Transmission Line

# What is the Proposed Project?



**The Proposed Project includes the following major components:**

- **New 230-kV transmission line** between Sycamore Canyon Substation and Peñasquitos Substation within existing SDG&E and City of San Diego franchise right-of-ways for 16.7 miles
- **Substation modifications** at Peñasquitos, Sycamore Canyon, Chicarita, Mission, and San Luis Rey Substations
- **Minor modifications of existing transmission lines** at the Encina Hub, and between Mission Substation and Peñasquitos Junction

Additional Proposed Project details, maps and diagrams  
located in DEIR Chapter 2 and Appendix A.

# Proposed Project Location



- Additional Proposed Project maps and diagrams in DEIR Chapter 2.
- Detailed maps of the Proposed Project components located in DEIR Appendix A.

Sycamore - Peñasquitos 230-kV Transmission Line



# Environmental Impacts Defined in the Draft EIR



- **Significant unavoidable impacts that cannot be mitigated to less than significant levels:**
  - **Aesthetics:** Transmission lines, marker balls, and retaining walls would impact visual quality (DEIR Sections 4.2 and 5.3.3)
  - **Transportation and Traffic:** Impacts to traffic level of service from construction vehicles and activities, temporary parking loss at Black Mountain Ranch Community Park (DEIR Sections 4.7 and 5.3.8)
  - **Noise:** Substantial temporary construction noise from equipment and helicopters. Corona noise over the life of the project. (DEIR Sections 4.8 and 5.3.9)
  - **Recreation:** Construction and operational impacts to parks and trails (e.g. Black Mountain Ranch Community Park) due to closures, visual, and noise. (DEIR Sections 4.10 and 5.3.10)

Significant unavoidable impacts of the Proposed Project discussed in DEIR Chapters 4 and 5.

# Environmental Impacts Defined in the Draft EIR



■ Impacts in the following resource areas are defined as less than significant with mitigation:

- Biological Resources
- Paleontological Resources
- Geology, Soils, and Mineral Resources
- Hydrology and Water Quality
- Hazards and Hazardous Materials
- Cultural Resources
- Fire and Fuels Management
- Air Quality
- Greenhouse Gas Emissions
- Agriculture and Forestry
- Utilities and Public Service Systems

Proposed Project impacts are discussed in DEIR Chapters 4 and 5.

# Cumulative Impacts Defined in the Draft EIR



- Proposed Project impacts contribute considerably to cumulative impacts.
  - Aesthetics – visual quality
  - Noise – construction and corona noise
  - Recreation - temporary park access loss, long-term impacts on the value of public recreational resources
  - Traffic - road closures, increased construction traffic, emergency access interference

Representative View of Proposed Project Segment D and future Mission-Peñasquitos 230-kV Transmission Line in Los Peñasquitos Canyon



Proposed Project cumulative impacts are discussed in DEIR Chapter 5.

# Alternatives Screening Process



- 41 alternatives were evaluated; 36 were eliminated after considering project objective, feasibility, and environmental criteria
- Alternatives Screening Report describes alternatives considered and rationale for analysis or elimination (EIR Appendix D)
- Chapter 3 of the Draft EIR summarizes this screening process and results



# Alternatives Considered in the Draft EIR



- **Alternative 1:** Eastern Cable Pole at Carmel Valley Road
  - Locates the cable pole immediately south of Carmel Valley Road and avoids cable pole and underground transmission line in Black Mountain Ranch Community Park
- **Alternative 2:** Eastern Cable Pole at Pole P40 and Underground Alignment through City Open Space or City Water Utility Service Road
  - Locates the cable pole 300 feet south of Carmel Valley Road and avoids the cable pole and underground transmission line in Black Mountain Ranch Community Park

The five retained alternatives are described in DEIR Chapter 3. Detailed maps of each alternative are located in DEIR Appendix E. The analysis of alternatives is located in the resource topic sections in DEIR Chapter 4. The comparison of alternatives is located in DEIR Chapter 6.

# Alternatives Considered in the Draft EIR



- **Alternative 3: Los Peñasquitos Canyon Preserve-Mercy Road Underground**
  - Underground routing alternative from Ivy Hill Road to just west of Peñasquitos Junction
  - Avoids impacts from northern half of Segment A and all of Segments B and C including aesthetics, traffic, noise, and recreation impacts



Sycamore - Peñasquitos 230-kV Transmission Line



# Alternatives Considered in the Draft EIR

---



- **Alternative 3: Los Peñasquitos Canyon Preserve-Mercy Road Underground**
  - Road widths adequately sized for underground duct bank installation
    - Scripps Poway Parkway, Mercy Road, and Black Mountain Road are four-lane boulevards that have center medians for approximately 3 miles.
    - Park Village Road is a four-lane boulevard with a center median for approximately 2 miles along the eastern portion of the alternative alignment
    - Park Village Road transitions to a two-lane road for approximately 0.6 mile with parking along both sides at the western end of the alignment resulting in a road width that is similar to a four-lane road.
  - Modified version of a prior Sunrise Powerlink alternative

# Alternatives Considered in the Draft EIR



- **Alternative 4: Segment D 69-kV Partial Underground Alignment**
  - Underground double-circuit 69-kV power line within Carmel Mountain Road
  - Eliminates new tubular steel pole installation along 2.8 miles of Segment D thereby reducing or eliminating aesthetics, biological resources, noise, and recreation impacts in Segment D of the Proposed Project



Sycamore - Peñasquitos 230-kV Transmission Line



# Alternatives Considered in the Draft EIR

---

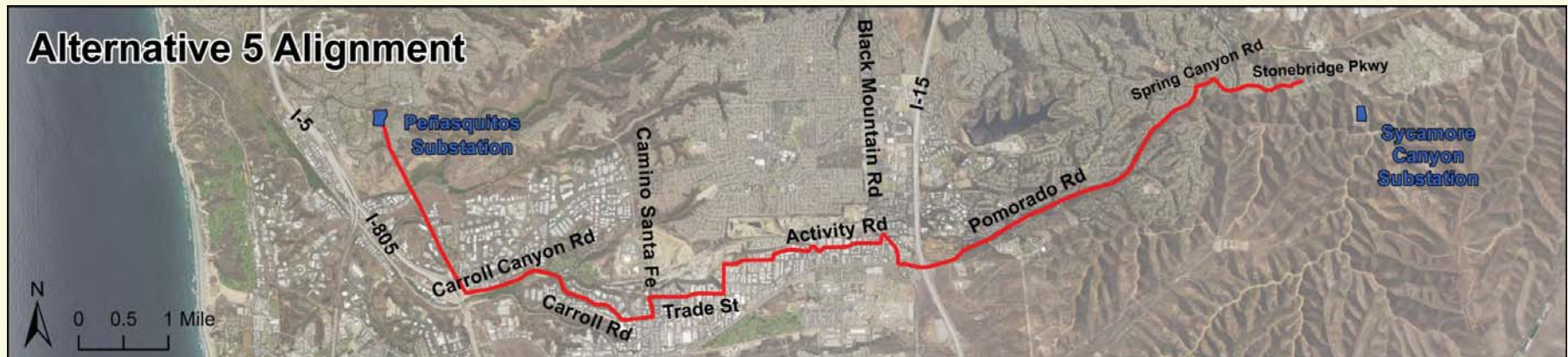


- **Alternative 4: Segment D 69-kV Partial Underground Alignment**
  - Road widths adequately sized for underground duct bank installation.
    - Carmel Mountain Road is a relatively new two-lane road at the east end of the underground alignment where the power line would enter the street.
    - Carmel Mountain Road becomes a divided boulevard with four road lanes and a center median where it crosses Timber Brook Lane.
  - Suggested by members of the public during scoping.

# Alternatives Considered in the Draft EIR



- **Alternative 5:** Pomerado Road to Miramar Area North Combination Underground/Overhead
  - Routing alternative in new alignment south of the Proposed Project that eliminates all Proposed Project Segment impacts
  - Majority of transmission line would be underground (11.5 miles)
  - East and west portions would be overhead in existing SDG&E ROW (2.8 miles)



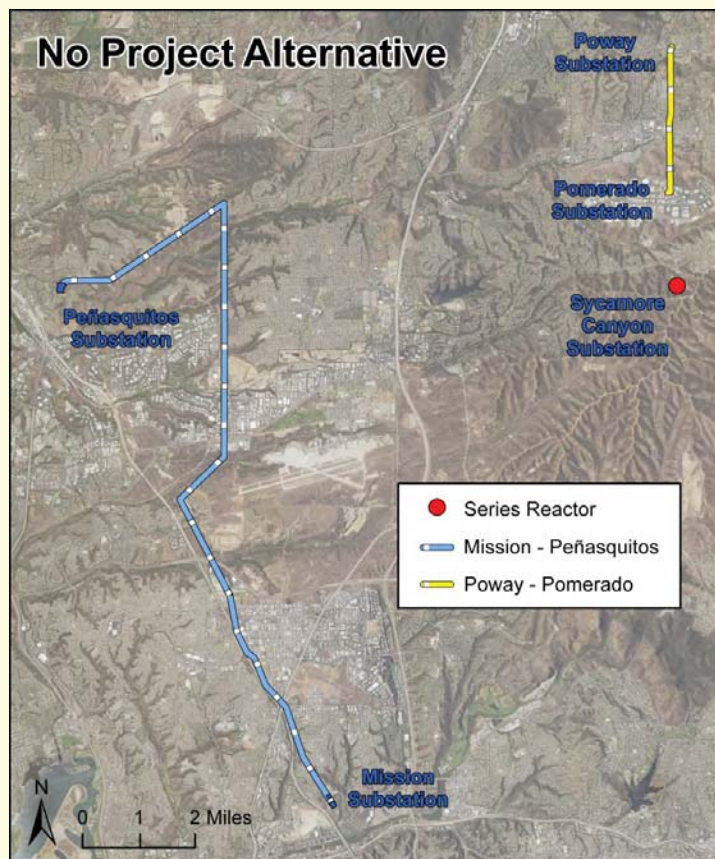
Sycamore - Peñasquitos 230-kV Transmission Line

# Alternatives Considered in the Draft EIR



- **Alternative 5: Pomerado Road to Miramar Area North Combination Underground/Overhead**
  - Road widths adequately sized for underground duct bank installation.
    - Stonebridge Parkway is a four-lane boulevard with a center median.
    - Pomerado Road has two travel lanes, a bike lane, and a shoulder, giving it the same width as a three-lane road.
    - Miramar Road is a major thoroughfare with six travel lanes plus a turn lane.
    - The industrial roads north of Miramar Road are two-lane roads with parking on each side resulting in a road width that is equivalent to a four-lane road.
  - Modified version of a prior Sunrise Powerlink alternative.

# Alternatives Considered in the Draft EIR



## ■ No Project Alternative

- Represents likely actions Applicant would take if project not approved
- Does not achieve project objectives
- Three upgrades are considered to comply with NERC reliability criteria:
  - Mission—Peñasquitos 230-kV Transmission Line
  - Second Poway—Pomerado 69-kV Power Line
  - Series Reactor at Sycamore Canyon Substation

The No Project Alternative is described in DEIR Chapter 3 and analyzed in Chapter 4.

Sycamore - Peñasquitos 230-kV Transmission Line

# Environmentally Superior Alternative



- **Alternative 5: Pomerado Road to Miramar Area North Combination Underground/Overhead**
  - Substantially reduces significant and unavoidable impacts to visual quality by locating the transmission line underground
  - Eliminates significant and unavoidable impacts to recreation and parking access
  - Minimizes long-term corona noise by locating the transmission line underground
  - Minimizes impacts to sensitive habitats and special-status species by constructing the transmission line in disturbed areas
  - Results in additional traffic impacts during construction
    - Increased vehicle trips and temporary road closures

The Environmentally Superior Alternative is discussed in DEIR Chapter 6.

# Overall Ranking of Alternatives



1. Alternative 5 – **Environmentally Superior Alternative**
2. Combination of Alternative 3 and Alternative 4 with Proposed Project
3. No Project Alternative
4. Alternative 3 with Proposed Project
5. Combination of Alternative 1 and Alternative 4 with Proposed Project
6. Combination of Alternative 2 and Alternative 4 with Proposed Project
7. Alternative 4 with Proposed Project
8. Alternative 1 with Proposed Project
9. Alternative 2 with Proposed Project
10. Proposed Project

The ranking and comparison of alternatives is presented in DEIR Chapter 6.



# Comments on Draft EIR Must be Received or Postmarked by November 2, 2015



Written comments may be submitted at any workshop or by mail, email, or fax.

By Mail:	California Public Utilities Commission c/o Panorama Environmental, Inc. 1 Embarcadero Center, Suite 740 San Francisco, CA 94111
By E-mail:	<a href="mailto:sycamorepenasquitos@panoramaenv.com">sycamorepenasquitos@panoramaenv.com</a>
By Fax:	(650) 373-1211

## For More Information

---



- **Check our Internet website:**

[http://www.cpuc.ca.gov/Environment/info/panoramaenv/Sycamore\\_Penasquitos/index.html](http://www.cpuc.ca.gov/Environment/info/panoramaenv/Sycamore_Penasquitos/index.html)

- **Information Repositories:**

- Eight libraries have project information

- **E-mail us at:**

- [sycamorepenasquitos@panoramaenv.com](mailto:sycamorepenasquitos@panoramaenv.com)

- **Call the Project Information Line:**

- (650) 373-1200





# Informal Discussion with EIR Preparers

Sycamore - Peñasquitos 230-kV Transmission Line



**ATTACHMENT 1**  
**DRAFT EIR PUBLIC REVIEW MATERIALS**

**DRAFT EIR PUBLIC WORKSHOP POSTERS**

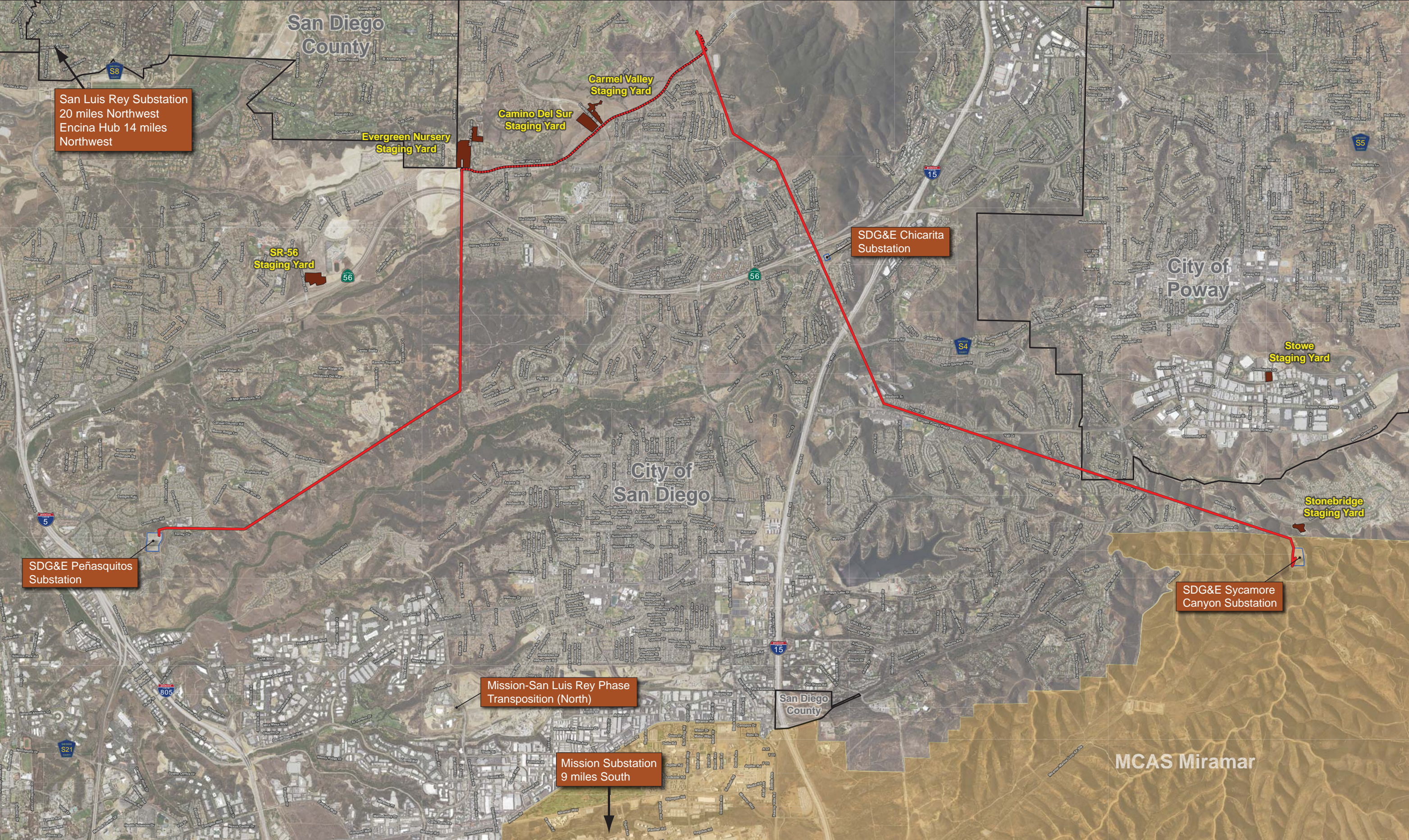
---

**ATTACHMENT 1**  
**DRAFT EIR PUBLIC REVIEW MATERIALS**

*This page is intentionally left blank.*



Sycamore-Peñasquitos 230 kV Transmission Line Proposed Project



**LEGEND**

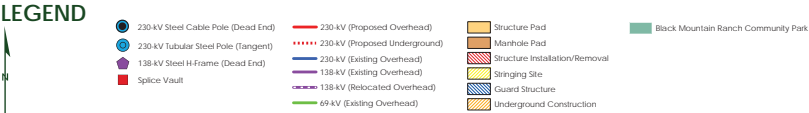
	Proposed Alignment (overhead)		Staging Yard		City Boundary
	Proposed Alignment (underground)		Substation		MCAS Miramar
			Other Work Area		

0 0.25 0.5 1 1.5 2 Miles

**PANORAMA**  
ENVIRONMENTAL, INC.

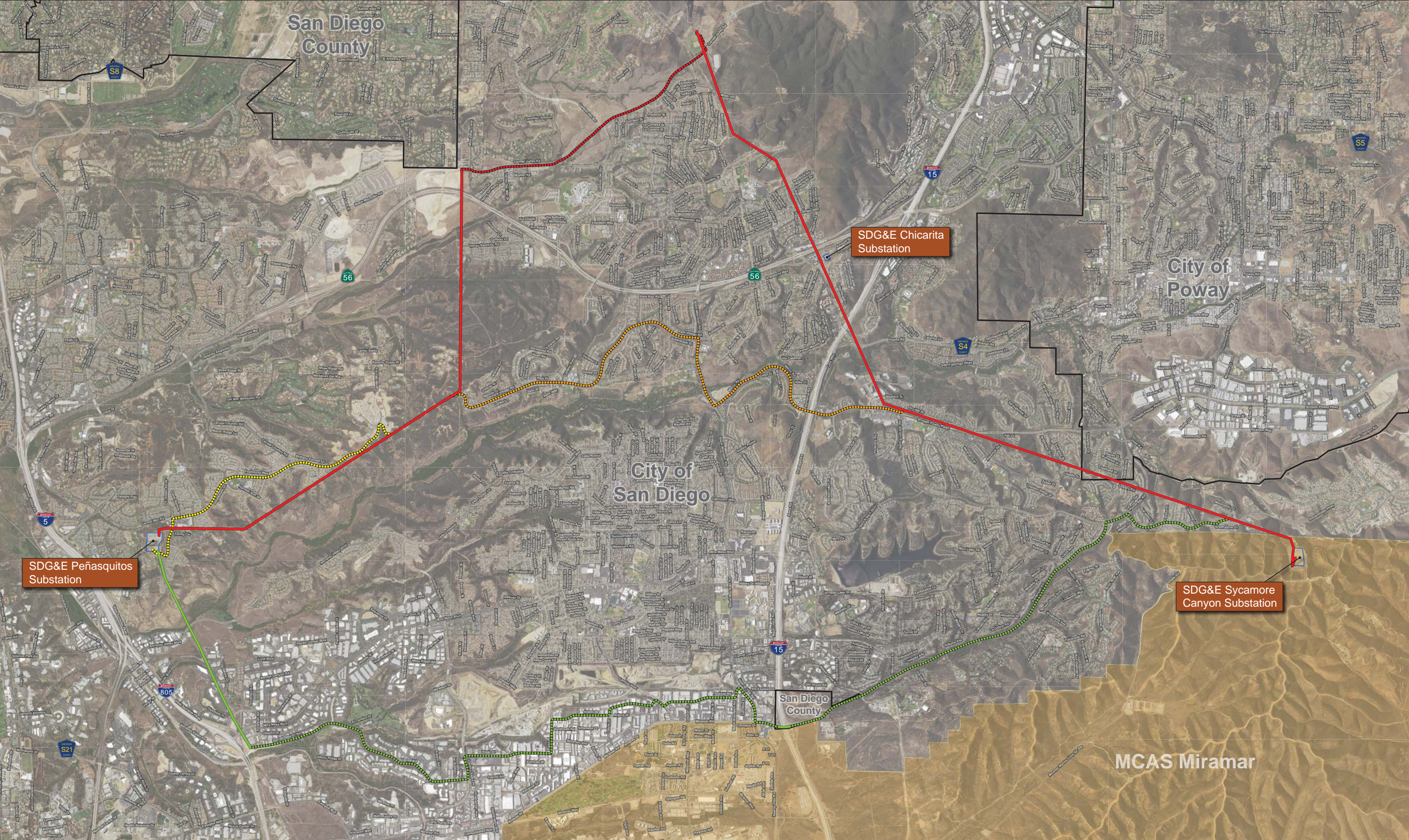


Sycamore-Peñasquitos 230 kV Transmission Line Proposed Project - Cable Pole Alternatives





Sycamore-Peñasquitos 230 kV Transmission Line Project Alternative Routes



**LEGEND**

- Proposed Alignment (overhead)
- Proposed Alignment (underground)
- Substation
- Alternative 3: Los Peñasquitos Canyon Preserve - Mercy Road Underground Alternative
- Alternative 4: Segment D 69kV Partial Underground Alignment
- Alternative 5: Pomerado Road to Miramar Area North Combination Underground/Overhead Alternative (overhead)
- Alternative 5: Pomerado Road to Miramar Area North Combination Underground/Overhead Alternative (underground)
- City Boundary
- MCAS Miramar

0 0.25 0.5 1 1.5 2 Miles

**PANORAMA**  
ENVIRONMENTAL, INC.



View Before and After Sycamore-Peñasquitos 230-kV  
Transmission Line in Segment A

KOP 1 – BASELINE PHOTO (BEFORE PROPOSED PROJECT)  
View from Stonebridge Athletic Field Looking Northwest



KOP 1 – PHOTOSIMULATION (AFTER PROPOSED PROJECT)  
View from Stonebridge Athletic Field Looking Northwest





View Before and After Sycamore-Peñasquitos 230-kV  
Transmission Line in Segment D

KOP 14 – BASELINE PHOTO (BEFORE PROPOSED PROJECT)  
View from Briarlake Wood Road Looking West-Southwest



KOP 14 – PHOTOSIMULATION (AFTER PROPOSED PROJECT)  
View from Briarlake Wood Road Looking West-Southwest





View Before and After Proposed Project and Mission-Peñasquitos  
230-kV Transmission Line

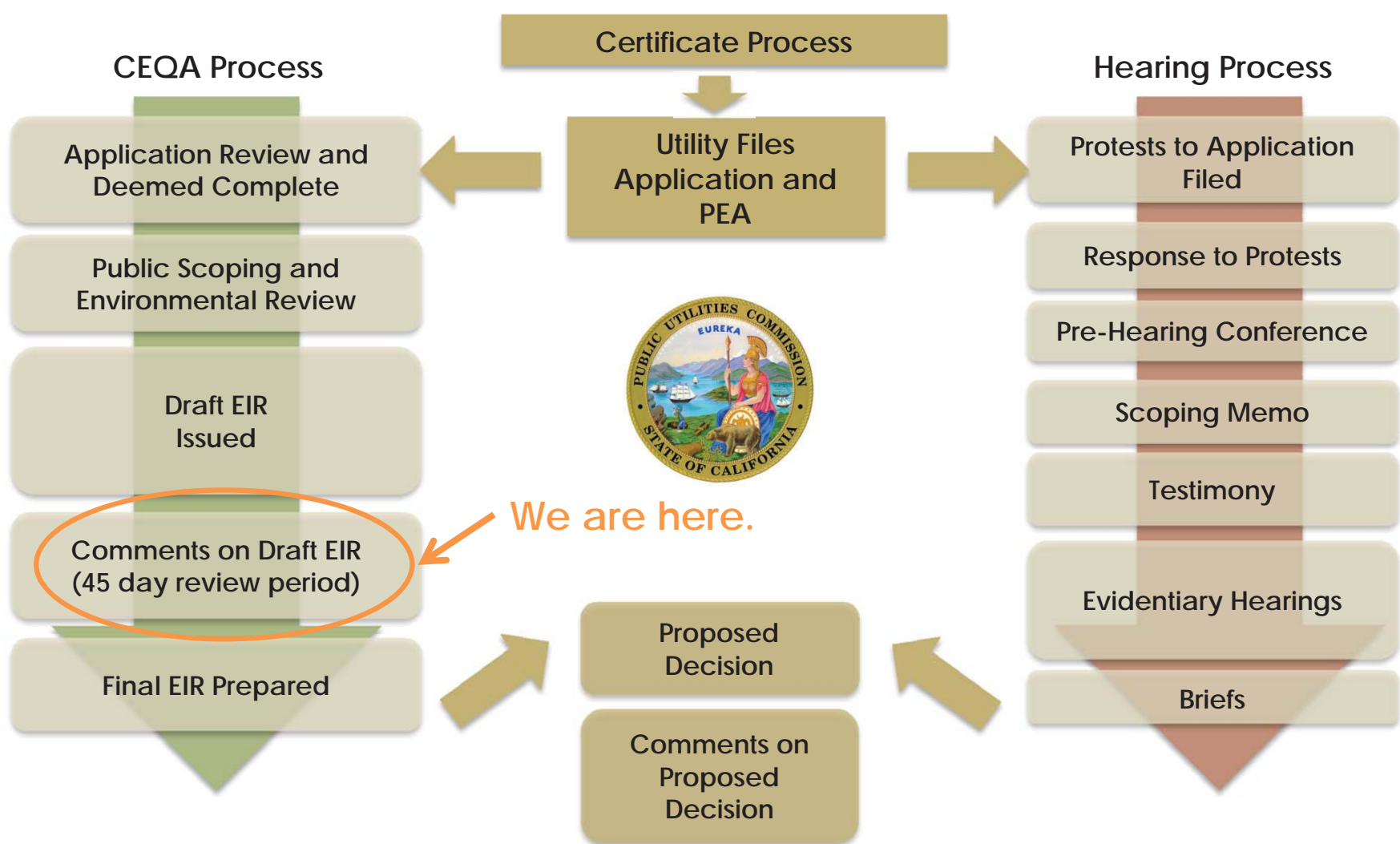
SEGMENT D REPRESENTATIVE VIEW – Existing Conditions



SEGMENT D REPRESENTATIVE VIEW – Cumulative Impact



# CERTIFICATE OF PUBLIC CONVENIENCE AND NECESSITY (CPCN)



## HOW TO COMMENT ON THE DRAFT EIR

Submit comments in writing via mail, email, fax, or at a Draft EIR public workshop

By Mail:

California Public Utilities Commission  
c/o Panorama Environmental, Inc.  
1 Embarcadero Center, Suite 740  
San Francisco, CA 94111

By Email:

[sycamorepenasquitos@panoramaenv.com](mailto:sycamorepenasquitos@panoramaenv.com)

By Fax:

650-373-1211