



Traffic Control Permit (TCP) Multiple Location List

(Franchise Utility Company Only - May Not Be submitted By Contractor)

THE CITY OF SAN DIEGO
APPROVED

TRAFFIC CONTROL PERMIT

From: (Company):

MAY 31 2017

Contact Person:

CITY OF SAN DIEGO

Development

Engineering Division

Traffic Safety Section

To: City of San Diego, Traffic Permit Section

SDG&E

Rod Nelson

Permit #

Date: 5/30/2017

Phone No.: 619-778-2405

Fax: _____

TCP No. _____

TYPE OF WORK

- 1 = Lane Closure
- 2 = Street Closure
- 3 = Sidewalk Closure
- 4 = Alley Closure
- 5 = Parking Lane
- 6 = Detour
- 7 = Trenching
- 8 = Flagging

City Use Only

Authorized #

By Felipe Amato/DS

Yes X No _____

Date Reviewed

5/31/17

Location	From	To	Start Date *	End Date *	Work Hours **	Thomas Bros.	Type of Work
Trade Street	Camino Santa Fe	Carroll Way	6/4/17	6/30/17	9:00PM - 5:00AM	1208-J7, 1209-A7	1,5,7,8
Miralani Drive	Arjons Drive	Camino Ruiz	6/4/17	6/30/17	9:00PM - 5:00AM	1209-C6	1,5,7,8
Activity Road	Camino Ruiz	Black Mountain Road	6/4/17	6/30/17	9:00PM - 5:00AM	1209-D6, E6	1,5,7,8
Black Mountain Road	Kearny Villa Road	Miramar Road	6/4/17	6/30/17	9:00PM - 5:00AM	1209-E6	1,5,7,8

ORIGINAL PERMIT MUST BE KEPT ON JOB SITE ALL TIMES

Comments: Vault Crew - Phase 33 (from previous issued permit), Phases 53, 56, 64, 69, and 74 only (Night work hours 9pm - 5am, Sunday night to Thursday night)

Must be submitted a minimum of 2 working days prior to start of work. All columns must be filled out for proper authorization
 Fax or mail to: City of San Diego • Traffic Control Permit Section • 1222 First Avenue, MS 501 • San Diego, CA 92101. Fax (619) 446-5489 Office (619) 446-5150
 * Work Days: Monday Through Friday ** Work Hours : 8:30 AM - 3:30PM. Unless other hours are preapproved)

No Work on Saturdays, Sundays, or Holidays Unless Approved and Noted In Comments
 Minimum of 5 working days required for construction work which affects traffic signal e-mail info to: ctraff@san-diego.gov

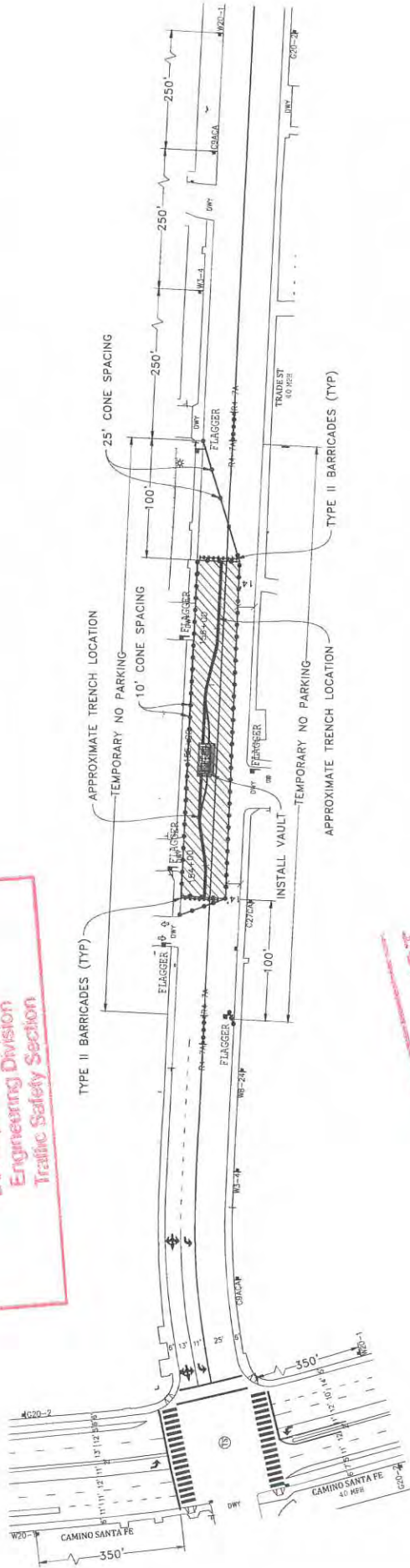
*Signal on Flash Camino Ruiz & Activity Rd

ATTENTION UTILITY COMPANY

Special Inspection Fees May Be Applied By City of San Diego For Any Night or Weekend Work.

APPROVED
TRAFFIC CONTROL PERMIT
MAY 31 2017
 CITY OF SAN DIEGO
 Development Services
 Engineering Division
 Traffic Safety Section

SCALE 1" = 40'



ORIGINAL PERMIT MUST
BE KEPT
ON JOB SITE ALL TIMES

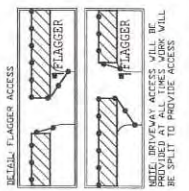
- LEGEND**
- SIGN
 - SIGNAL
 - TRAFFIC CONES / DELINEATOR
 - ▬ BARRICADE
 - ⚡ FLASHING ARROW SIGN
 - ▨ WORK ZONE
 - 🚌 BUS STOP

NOTE: FLAGGERS WILL PROVIDE ACCESS TO DRIVEWAYS AT ALL TIMES

NOTE: FLAGGERS WILL SAFELY WORK AND PEDESTRIANS THROUGH

NOTE: CONTRACTOR WILL ALLOW FIRE STATION INGRESS AND EGRESS AT ALL TIMES

NOTE: WB-2A STEEL PLATES AHEAD - SIGNS WILL REMAIN IN PLACE FOR DURATION OF WORK



NOTE: CONTRACTOR WILL COORDINATE ALL WORK WITH FIRE STATION PRIOR TO START OF WORK

NOTE: WORK WITHIN TEMPORARILY CLOSED TRANSPORTATION RIGHT-OF-WAY MUST BE COMPLETED 5 DAYS PRIOR TO START OF WORK

NOTE: CONTRACTOR WILL COORDINATE ALL WORK WITH EXISTING PROJECTS AND AGENCIES WITH EXISTING TRAFFIC CONTROL

NOTE: CONTRACTOR WILL COORDINATE ALL WORK WITH RESIDENTS PRIOR TO START OF WORK

NOTE: CONTRACTOR WILL COORDINATE ALL WORK WITH BUSINESSES PRIOR TO START OF WORK

WORK HOURS: _____ TO _____

SEE CONTRACT FOR DETAILS TO BE MAINTAINED BETWEEN FLAGGER OR USE OF CHART COMMUNICATION

FLAGGER WILL ASSIST WITH BREAKS/ACCOMMODATE

NIGHT WORK ONLY
PHASE 33

DATE: Mar. 15, 2017
 DESIGNED BY:
 Clint Jones

PROJECT NAME: TL23071 - SYCAMORE CANYON SUBSTATION TO PENASQUITOS - 230 KV UNDERGROUND

AIRX JOB#: X16021B

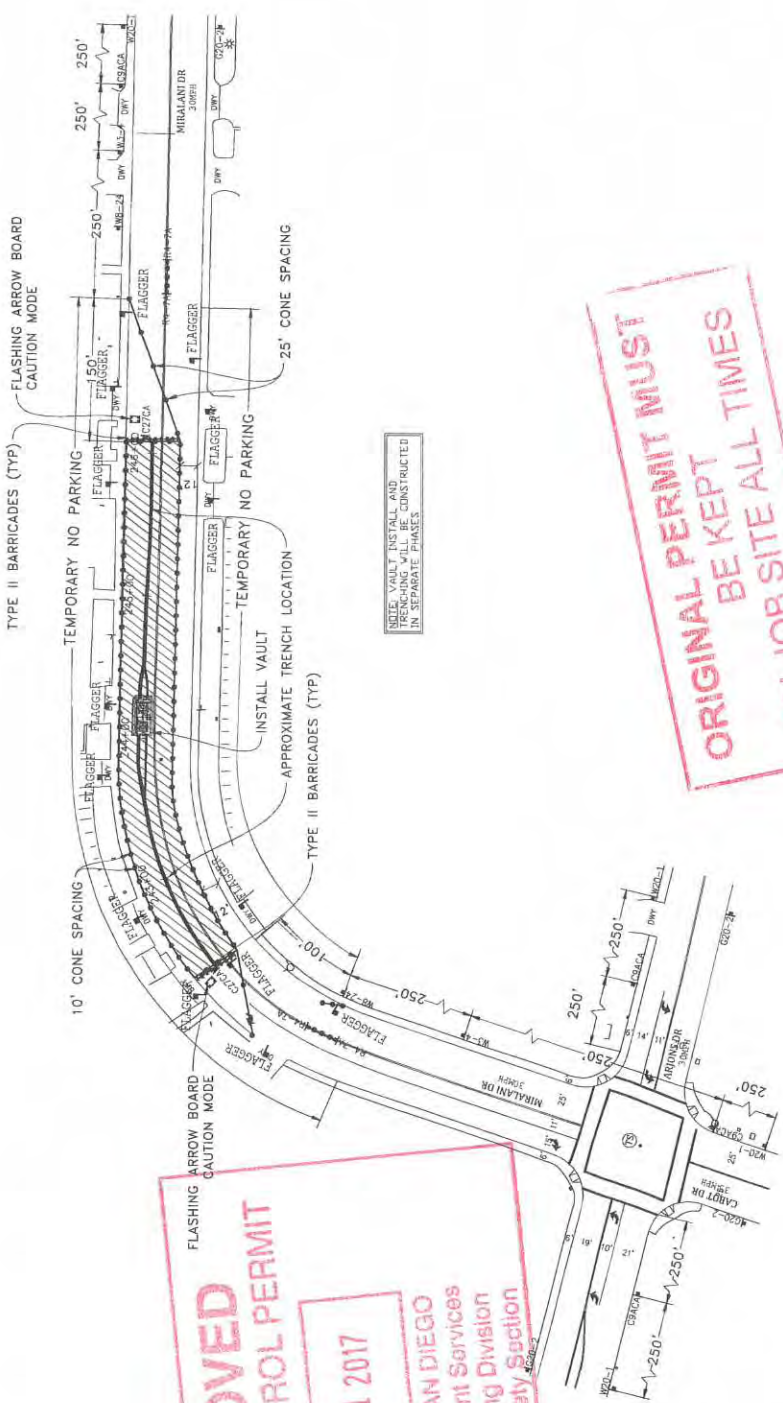
THOMAS GRID#: -

TYPE OF WORK: TRENCHING / CONDUIT

DRAWN FOR: CITY OF SAN DIEGO

MISC/POTHoles#:

AIRX
 SURVEYORS, INC.
 Gail McMorrin
 President
 2834 EAST ELMORTE PARKWAY, SUITE C
 ESCOBEDO, CA 92027
 PHONE: (760) 480-2347
 CELL: (760) 193-8208

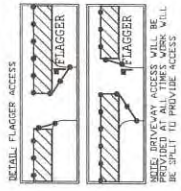


APPROVED
TRAFFIC CONTROL PERMIT
 MAY 31 2017
 CITY OF SAN DIEGO
 Development Services
 Engineering Division
 Traffic Safety Section

NOTE: VAULT, INSTALL AND CONSTRUCTED IN SEPARATE PHASES.

**ORIGINAL PERMIT MUST
 BE KEPT
 ON JOB SITE ALL TIMES**

- LEGEND**
- SIGN
 - SIGNAL
 - ▬ TRAFFIC CONES / DELINEATOR
 - BARRICADE
 - ⊥ FLAGGER
 - ⬇ FLASHING ARROW SIGN
 - ▨ WORK ZONE
 - ⊞ BUS STOP



NOTE: FLAGGERS WILL PROVIDE ACCESS TO DRIVEWAYS AT ALL TIMES.

NOTE: FLAGGERS WILL SAFELY STRIP TRAFFIC THROUGH WORK AREA.

NOTE: CONTRACTOR WILL ALLOW FIRE STATION INGRESS AND EGRESS AT ALL TIMES.

NOTE: 8'-24" STEEL PLATES WILL BE PROVIDED AT ALL TIMES WORK WILL BE SPLIT TO PROVIDE ACCESS.

NOTE: CONTRACTOR WILL COORDINATE WITH FIRE STATION PRIOR TO START OF WORK.

NOTE: CONTRACTOR WILL COORDINATE ALL WORK WITH TRANSIT DEPARTMENT 5 DAYS PRIOR TO START OF WORK.

NOTE: CONTRACTOR WILL COORDINATE ALL WORK WITH EXISTING PROJECTS AND EXISTING TRAFFIC CONTROL.

NOTE: CONTRACTOR WILL COORDINATE ALL WORK WITH RESIDENTS PRIOR TO START OF WORK.

NOTE: CONTRACTOR WILL COORDINATE ALL WORK WITH BUSINESSES PRIOR TO START OF WORK.

WORK HOURS: 9:00PM TO 5:00AM

SEE CONTACT MAP TO BE MAINTAINED BETWEEN FLAGGERS TO PREVENT COLLISIONS. FLAGGER WILL ASSIST WITH UNUSUAL SITUATIONS.

UTILITY SURVEYORS, INC.
ARX
 Gail McMorrin
 President
 3304 EAST ALLIANCE PARKWAY, SUITE G
 ESCONDIDO, CA 92027
 PHONE: (760) 940-3447
 CELL: (760) 418-3728

PROJECT NAME: TL23071 - SYCAMORE CANYON SUBSTATION TO PENASQUITOS - 230 KV UNDERGROUND

PROJECT JOB#: X160218

TYPE OF WORK: TRENCHING / CONDUIT MISCELLANEOUS

THOMAS GRID#: -

DRAWN FOR: CITY OF SAN DIEGO

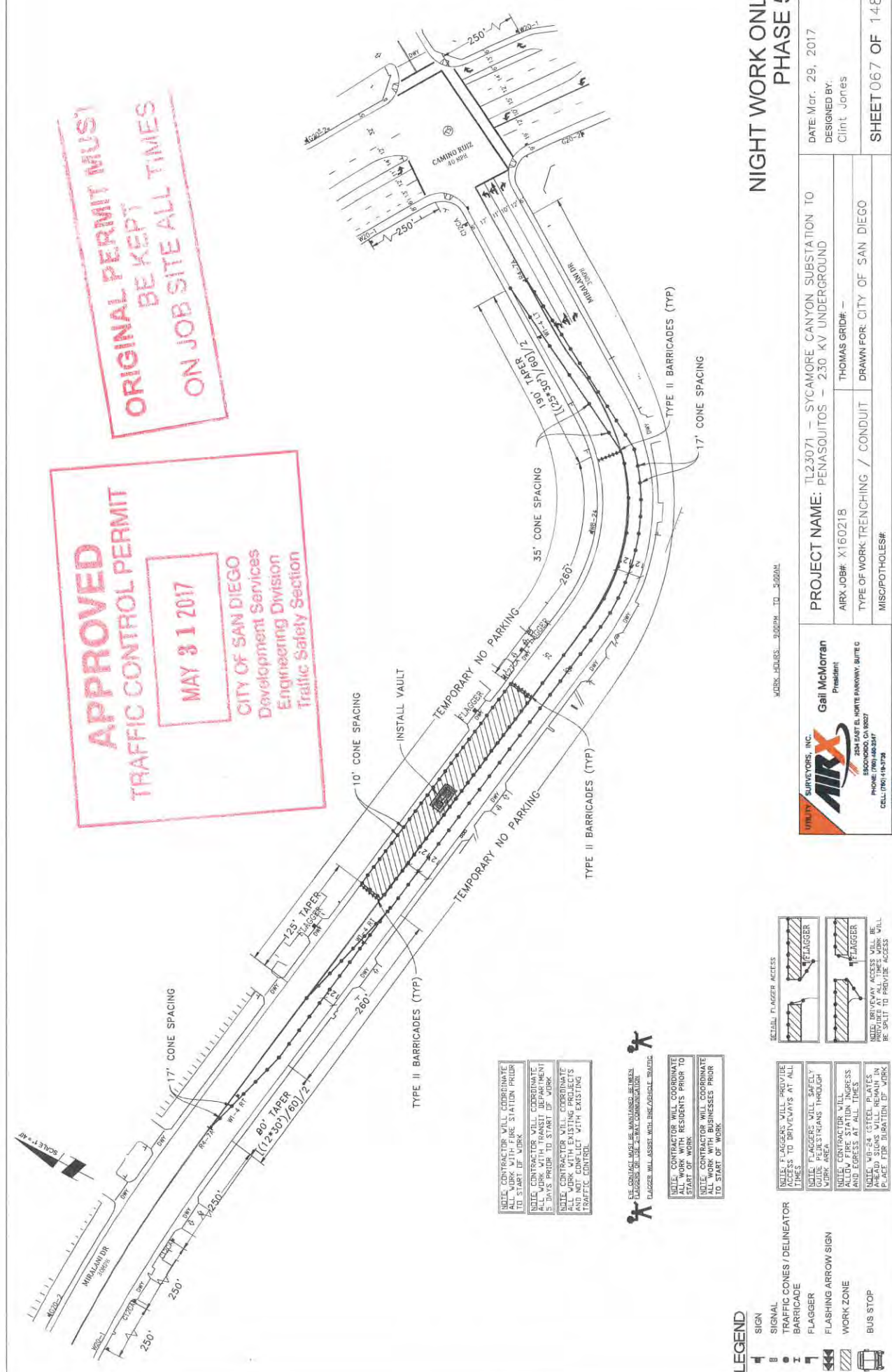
**NIGHT WORK ONLY
 PHASE 53**

DATE: Mar, 29, 2017
DESIGNED BY:
 Clint Jones

SHEET 064 OF 148

APPROVED
TRAFFIC CONTROL PERMIT
MAY 31 2017
CITY OF SAN DIEGO
Development Services
Engineering Division
Traffic Safety Section

ORIGINAL PERMIT MUST
BE KEPT
ON JOB SITE ALL TIMES

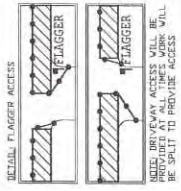


NOTE: CONTRACTOR WILL MAINTAIN ALL WORK WITH FIRE STATION PRIOR TO START OF WORK
 NOTE: CONTRACTOR WILL COORDINATE ALL WORK WITH TRANSIT DEPARTMENT 5 DAYS PRIOR TO START OF WORK
 NOTE: CONTRACTOR WILL COORDINATE ALL WORK WITH UTILITIES DEPARTMENT AND NOT CONFLICT WITH EXISTING TRAFFIC CONTROL

SEE CONTRACT MAPS FOR MAINTENANCE BETWEEN FLAGGERS TO BE MAINTAINED BETWEEN FLAGGERS WILL ASSURE WITH THE ORIGINAL TRAFFIC

NOTE: CONTRACTOR WILL COORDINATE ALL WORK WITH RESIDENTS PRIOR TO START OF WORK
 NOTE: CONTRACTOR WILL COORDINATE ALL WORK WITH BUSINESSES PRIOR TO START OF WORK

- LEGEND**
- SIGN
 - SIGNAL
 - TRAFFIC CONES / DELINEATOR
 - BARRICADE
 - FLAGGER
 - FLASHING ARROW SIGN
 - WORK ZONE
 - BUS STOP
- NOTE: FLAGGERS WILL PROVIDE ACCESS TO DRIVEWAYS AT ALL TIMES
 NOTE: FLAGGERS WILL SAFELY GUIDE PEDESTRIANS THROUGH WORK AREA
 NOTE: CONTRACTOR WILL PROVIDE ALL FIVE STATION ACCESS AND EGRESS AT ALL TIMES
 NOTE: VB-24 STEEL PLATES AHEAD SIGNS WILL REMAIN IN PLACE FOR DURATION OF WORK
 NOTE: DRIVEWAY ACCESS WILL BE PROVIDED AT ALL TIMES WORK WILL BE SPLIT TO PROVIDE ACCESS

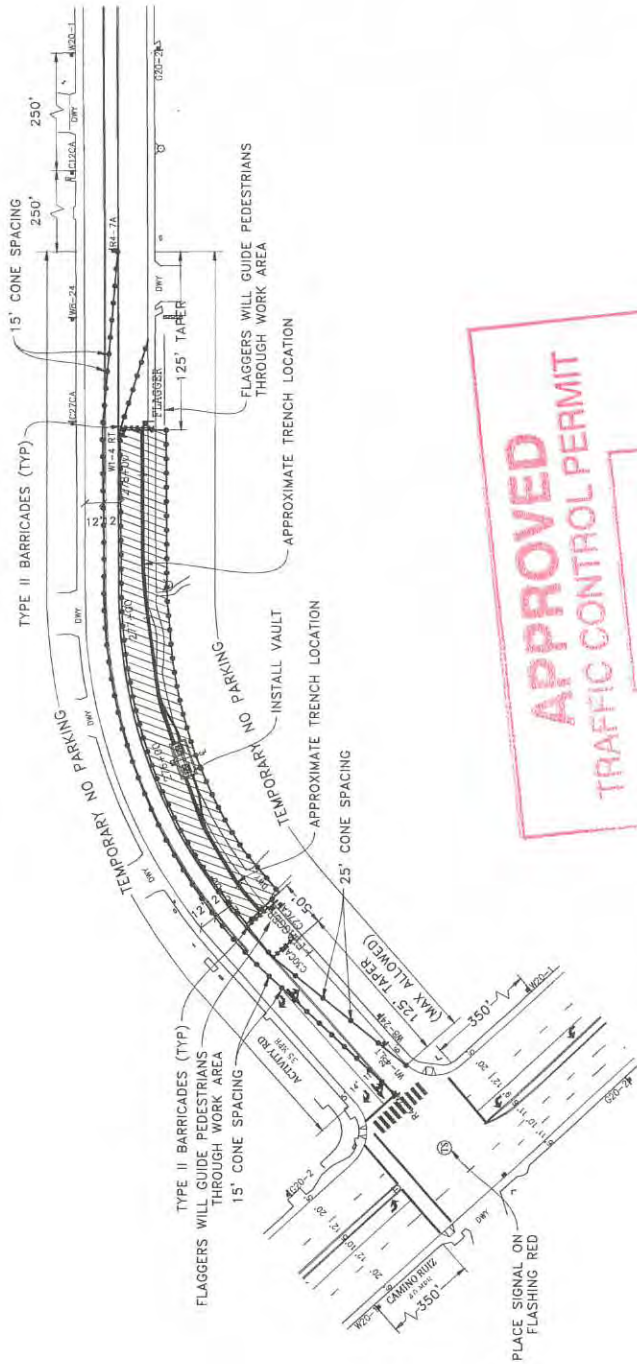


NIGHT WORK ONLY
PHASE 56

WORK HOURS: 9:00PM TO 3:00AM

 AIRX UTILITY SURVEYORS, INC. Gail McMoran President 2534 EAST BL. NORTH PARKWAY, SUITE C ESCOBEDO, CA 95027 PHONE: (925) 485-2517 CELL: (925) 414-1478	PROJECT NAME: TL23071 - SYCAMORE CANYON SUBSTATION TO PENASQUITOS - 2.30 KV UNDERGROUND AIRX JOB#: X160218 TYPE OF WORK: TRENCHING / CONDUIT MISC/POT HOLES:	DATE: Mar. 29, 2017 DESIGNED BY: Clint Jones THOMAS GRID# - DRAWN FOR: CITY OF SAN DIEGO
	SHEET 067 OF 148	

SCALE 1" = 40'



APPROVED
TRAFFIC CONTROL PERMIT

MAY 31 2017

 CITY OF SAN DIEGO
 Development Services
 Engineering Division
 Traffic Safety Section

ORIGINAL PERMIT MUST
BE KEPT ALL TIMES
ON JOB SITE ALL TIMES

NIGHT WORK ONLY
PHASE 64

NOTE: CONTRACTOR WILL COORDINATE WITH ALL AGENCIES TO START OF WORK.
 NOTE: CONTRACTOR WILL COORDINATE WITH ALL AGENCIES TO START OF WORK.
 NOTE: CONTRACTOR WILL COORDINATE WITH ALL AGENCIES TO START OF WORK.

NOTE: CONTRACTOR WILL COORDINATE WITH ALL AGENCIES TO START OF WORK.
 NOTE: CONTRACTOR WILL COORDINATE WITH ALL AGENCIES TO START OF WORK.
 NOTE: CONTRACTOR WILL COORDINATE WITH ALL AGENCIES TO START OF WORK.

NOTE: CONTRACTOR WILL COORDINATE WITH ALL AGENCIES TO START OF WORK.
 NOTE: CONTRACTOR WILL COORDINATE WITH ALL AGENCIES TO START OF WORK.
 NOTE: CONTRACTOR WILL COORDINATE WITH ALL AGENCIES TO START OF WORK.

NOTE: CONTRACTOR WILL COORDINATE WITH ALL AGENCIES TO START OF WORK.
 NOTE: CONTRACTOR WILL COORDINATE WITH ALL AGENCIES TO START OF WORK.
 NOTE: CONTRACTOR WILL COORDINATE WITH ALL AGENCIES TO START OF WORK.

NOTE: CONTRACTOR WILL COORDINATE WITH ALL AGENCIES TO START OF WORK.
 NOTE: CONTRACTOR WILL COORDINATE WITH ALL AGENCIES TO START OF WORK.
 NOTE: CONTRACTOR WILL COORDINATE WITH ALL AGENCIES TO START OF WORK.

NOTE: CONTRACTOR WILL COORDINATE WITH ALL AGENCIES TO START OF WORK.
 NOTE: CONTRACTOR WILL COORDINATE WITH ALL AGENCIES TO START OF WORK.
 NOTE: CONTRACTOR WILL COORDINATE WITH ALL AGENCIES TO START OF WORK.

NOTE: CONTRACTOR WILL COORDINATE WITH ALL AGENCIES TO START OF WORK.
 NOTE: CONTRACTOR WILL COORDINATE WITH ALL AGENCIES TO START OF WORK.
 NOTE: CONTRACTOR WILL COORDINATE WITH ALL AGENCIES TO START OF WORK.

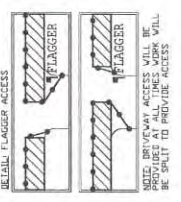
DATE: Mar. 29, 2017
 DESIGNED BY:
 Clint Jones
 SHEET 077 OF 148

PROJECT NAME: SYCAMORE CANYON SUBSTATION TO PENASQUITOS - 230 KV UNDERGROUND
 AIRX JOB#: X160218
 THOMAS GRID# -
 TYPE OF WORK: TRENCHING / CONDUIT
 DRAWN FOR: CITY OF SAN DIEGO
 MISCELLANEOUS:

Gail McMoran
 President
 AIRX SURVEYORS, INC.
 2300 EAST BLUNDELL AVENUE, SUITE G
 ESCOBEDO, CA 92027
 PHONE: (760) 480-2547
 CELL: (760) 181-3728

PROJECT NAME: SYCAMORE CANYON SUBSTATION TO PENASQUITOS - 230 KV UNDERGROUND
 AIRX JOB#: X160218
 THOMAS GRID# -
 TYPE OF WORK: TRENCHING / CONDUIT
 DRAWN FOR: CITY OF SAN DIEGO
 MISCELLANEOUS:

- LEGEND**
- SIGN
 - TRAFFIC CONES / DELINEATOR
 - BARRICADE
 - FLAGGER
 - FLASHING ARROW SIGN
 - WORK ZONE
 - BUS STOP



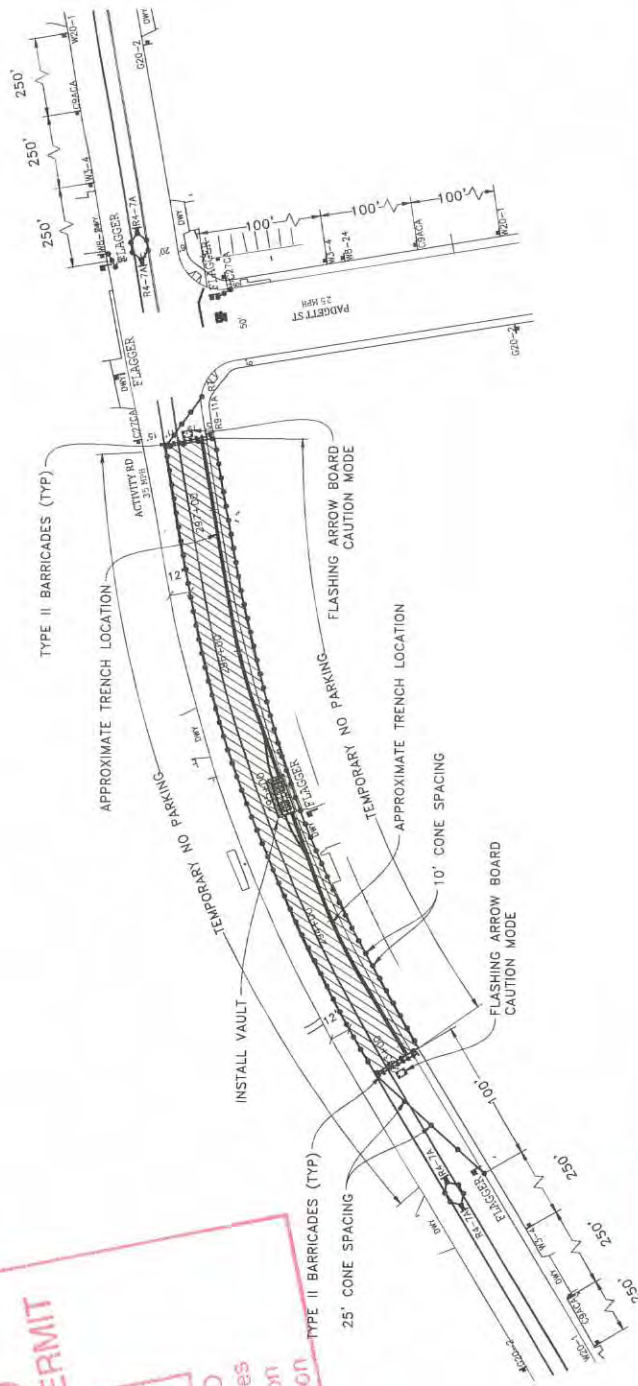
SCALE 1" = 40'

APPROVED
TRAFFIC CONTROL PERMIT

MAY 31 2017

CITY OF SAN DIEGO
Department Services
Engineering Division
Traffic Safety Section

**ORIGINAL PERMIT MUST
BE KEPT
ON JOB SITE ALL TIMES**

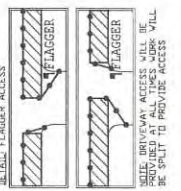


NOTE: VAULT WORK SHALL BE CONSTRUCTED IN SEPARATE PHASES

NOTE: CONTRACTOR WILL COORDINATE ALL WORK WITH FIRE STATION PRIOR TO START OF WORK
 NOTE: CONTRACTOR WILL COORDINATE ALL WORK WITH RESIDENTS PRIOR TO START OF WORK
 NOTE: CONTRACTOR WILL COORDINATE ALL WORK WITH BUSINESSES PRIOR TO START OF WORK

NOTE: CONTRACTOR WILL COORDINATE ALL WORK WITH FIRE STATION PRIOR TO START OF WORK
 NOTE: CONTRACTOR WILL COORDINATE ALL WORK WITH RESIDENTS PRIOR TO START OF WORK
 NOTE: CONTRACTOR WILL COORDINATE ALL WORK WITH BUSINESSES PRIOR TO START OF WORK

- LEGEND**
- SIGN
 - SIGNAL
 - ▬ TRAFFIC CONES / DELINEATOR
 - ▬ BARRICADE
 - ▬ FLAGGER
 - ▬ FLASHING ARROW SIGN
 - ▬ WORK ZONE
 - ▬ BUS STOP



NOTE: CONTRACTOR WILL COORDINATE ALL WORK WITH FIRE STATION PRIOR TO START OF WORK
 NOTE: CONTRACTOR WILL COORDINATE ALL WORK WITH RESIDENTS PRIOR TO START OF WORK
 NOTE: CONTRACTOR WILL COORDINATE ALL WORK WITH BUSINESSES PRIOR TO START OF WORK

NOTE: CONTRACTOR WILL COORDINATE ALL WORK WITH FIRE STATION PRIOR TO START OF WORK
 NOTE: CONTRACTOR WILL COORDINATE ALL WORK WITH RESIDENTS PRIOR TO START OF WORK
 NOTE: CONTRACTOR WILL COORDINATE ALL WORK WITH BUSINESSES PRIOR TO START OF WORK

WORK HOURS: 5:00PM - 11:00PM
 EYE CONTACT MUST BE MAINTAINED BETWEEN FLAGGERS OR USE 2-WAY COMMUNICATION
 FLAGGER WILL ASSESS WITH LINE/ASPHALT/TRAFFIC

NOTE: CONTRACTOR WILL COORDINATE ALL WORK WITH FIRE STATION PRIOR TO START OF WORK
 NOTE: CONTRACTOR WILL COORDINATE ALL WORK WITH RESIDENTS PRIOR TO START OF WORK
 NOTE: CONTRACTOR WILL COORDINATE ALL WORK WITH BUSINESSES PRIOR TO START OF WORK

NOTE: CONTRACTOR WILL COORDINATE ALL WORK WITH FIRE STATION PRIOR TO START OF WORK
 NOTE: CONTRACTOR WILL COORDINATE ALL WORK WITH RESIDENTS PRIOR TO START OF WORK
 NOTE: CONTRACTOR WILL COORDINATE ALL WORK WITH BUSINESSES PRIOR TO START OF WORK

NOTE: CONTRACTOR WILL COORDINATE ALL WORK WITH FIRE STATION PRIOR TO START OF WORK
 NOTE: CONTRACTOR WILL COORDINATE ALL WORK WITH RESIDENTS PRIOR TO START OF WORK
 NOTE: CONTRACTOR WILL COORDINATE ALL WORK WITH BUSINESSES PRIOR TO START OF WORK

NOTE: CONTRACTOR WILL COORDINATE ALL WORK WITH FIRE STATION PRIOR TO START OF WORK
 NOTE: CONTRACTOR WILL COORDINATE ALL WORK WITH RESIDENTS PRIOR TO START OF WORK
 NOTE: CONTRACTOR WILL COORDINATE ALL WORK WITH BUSINESSES PRIOR TO START OF WORK

NOTE: CONTRACTOR WILL COORDINATE ALL WORK WITH FIRE STATION PRIOR TO START OF WORK
 NOTE: CONTRACTOR WILL COORDINATE ALL WORK WITH RESIDENTS PRIOR TO START OF WORK
 NOTE: CONTRACTOR WILL COORDINATE ALL WORK WITH BUSINESSES PRIOR TO START OF WORK

NOTE: CONTRACTOR WILL COORDINATE ALL WORK WITH FIRE STATION PRIOR TO START OF WORK
 NOTE: CONTRACTOR WILL COORDINATE ALL WORK WITH RESIDENTS PRIOR TO START OF WORK
 NOTE: CONTRACTOR WILL COORDINATE ALL WORK WITH BUSINESSES PRIOR TO START OF WORK

**NIGHT WORK ONLY
PHASE 69**

DATE: Mar. 29, 2017
 DESIGNED BY:
 Clint Jones
 SHEET 082 OF 148

PROJECT NAME: TL23071 - SYCAMORE CANYON SUBSTATION TO PENASQUITOS - 230 KV UNDERGROUND
 AIRX JOB#: X160218
 TYPE OF WORK: TRENCHING / CONDUIT
 THOMAS GRID# -
 DRAWN FOR: CITY OF SAN DIEGO
 MISC/POTHOLES#:

UTILITY SURVEYORS, INC.
AIRX
 Gail McMorrin, President
 2534 EAST EL NORTE PARKWAY, SUITE C
 ESCOBEDO, CA 92027
 PHONE: (760) 448-8887
 CELL: (760) 448-9294

