



# Traffic Control Permit (TCP) Multiple Location List

( Franchise Utility Company Only - May Not Be submitted By Contractor)

**APPROVED**  
**TRAFFIC CONTROL PERMIT**

JUL 13 2017

CITY OF SAN DIEGO  
Development Services  
Engineering Division  
Traffic Safety Section

**City Use Only**

Authorized # \_\_\_\_\_

By [Signature] (CPD)

Yes  No

Date Reviewed 12 JUL 17

THE CITY OF SAN DIEGO

To: City of San Diego, Traffic Permit Section

From: (Company): SDG&E

Contact Person: Rod Nelson

W.O. or Account #: Permit # \_\_\_\_\_

Date: 7/12/2017

Phone No.: 619-778-2405

Fax.: \_\_\_\_\_

TCP No. \_\_\_\_\_

- TYPE OF WORK**
- 1 = Lane Closure
  - 2 = Street Closure
  - 3 = Sidewalk Closure
  - 4 = Alley Closure
  - 5 = Parking Lane
  - 6 = Detour
  - 7 = Trenching
  - 8 = Flagging

ORIGINAL PERMIT MUST BE KEPT AT JOB SITE ALL TIMES

Location	From	To	Start Date *	End Date *	Work Hours **	Thomas Bros.	Type of Work
**Pomerado Road	2200' West of Willow Creek Road/Ave of Nations	Scripps Ranch Blvd	7/15/17	7/15/17	8 AM - 4:30 PM	1209-G6, H5, J5	1,7,8
Willow Creek Road	Pomerado Road	Caminito Covewood	7/15/17	7/15/17	8 AM - 4:30 PM	1209-G6, G5	8
Avenue of Nations	Pomerado Road	End of Street	7/15/17	7/15/17	8 AM - 4:30 PM	1209-G6, G5	8
>>> Place CMS on I-15 (NB and SB): "CONSTRUCTION ON POMERADO RD - EXPECT DELAYS" <<<<							

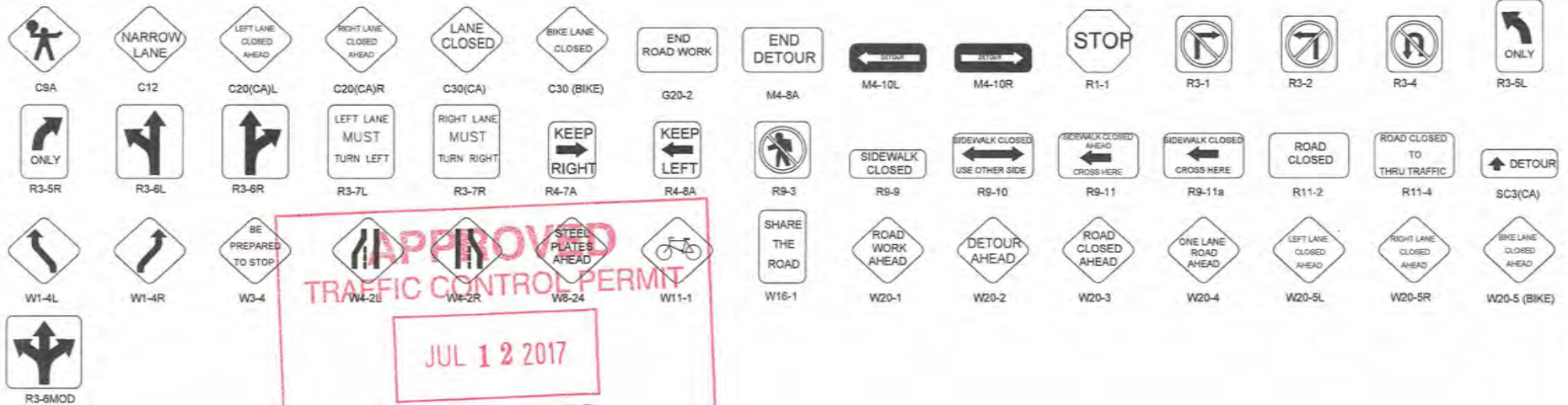
Vault Crew - Saturday 7/15/17 ONLY (8AM - 4:30PM) - Includes County ROW Phase 3, City ROW Phases 82 and 85  
 \*\*Pomerado Road west of Willow Creek Road/Ave of Nations (County ROW)

>>> Warning signs on approach to flagging operation will be doubled in east bound and west bound directions along Pomerado Road  
 >>> Flaggers to assist with potential back ups and provide better traffic circulation for all movements at signalized intersections that require flash.

**Comments:** (Minimum 4 flaggers at intersection)

Must be submitted a minimum of 2 working days prior to start of work. All columns must be filled out for proper authorization  
 Fax or mail to: City of San Diego • Traffic Control Permit Section • 1222 First Avenue, MS 501 • San Diego, CA 92101. Fax (619) 446-5489 Office (619) 446-5150  
 \* Work Days: Monday Through Friday \*\* Work Hours : 8:30 AM - 3:30PM. Unless other hours are preapproved)  
 No Work on Saturdays, Sundays, or Holidays Unless Approved and Noted In Comments  
 Minimum of 5 working days required for construction work which affects traffic signal e-mail info to: [JVaca@sanidiego.gov](mailto:JVaca@sanidiego.gov)

**SIGN LEGEND**



APPROVED  
 TRAFFIC CONTROL PERMIT  
 JUL 12 2017  
 CITY OF SAN DIEGO  
 Development Services  
 Traffic Safety

APPROACH SPEED (MPH)
25
30
35
40
45
50
55+

MINIMUM DISTANCE (FEET) BETWEEN SIGNS AND FROM LAST SIGN TO TAPER
100
250
250
250
500
500
500

MINIMUM TAPER LENGTHS (L) (FEET) FOR 12-FOOT LANE		
	1/2L	1/3L
125	65	45
180	90	60
245	125	85
320	160	110
540	270	180
600	300	200
660	330	220

BUFFER LENGTH (FEET)
155
200
250
305
360
425
495

MAX CONE SPACING		
TAPER	TANGENT	CONFLICT
25	50	12
30	60	15
35	70	17
40	80	20
45	90	22
50	100	25
55	110	27

**LEGEND**

- APPROXIMATE POTHOLE LOCATION
- SIGN
- TRAFFIC CONES / DELINEATOR
- BARRICADE
- FLAGGER
- FLASHING ARROW SIGN
- WORK ZONE
- CONSTRUCTION VEHICLE
- BUS STOP

ORIGINAL PERMIT MUST  
 BE KEPT  
 ON JOB SITE ALL TIMES

UTILITY SURVEYORS, INC.

**Gail McMoran**  
President

2534 EAST EL NORTE PARKWAY, SUITE C  
ESCONDIDO, CA 92027  
PHONE: (760) 480-2347  
CELL: (760) 419-3738

**PROJECT NAME:** TL23071 – Sycamore Canyon Substation To Penasquitos Substation – 230 KV Underground

AIRX JOB#: X160218      THOMAS GRID#: –

TYPE OF WORK: TRENCHING / CONDUIT      DRAWN FOR: SAN DIEGO COUNTY

MISC/POTHOLE#:

DATE: Mar 2, 2017

DESIGNED BY:  
Clint Jones

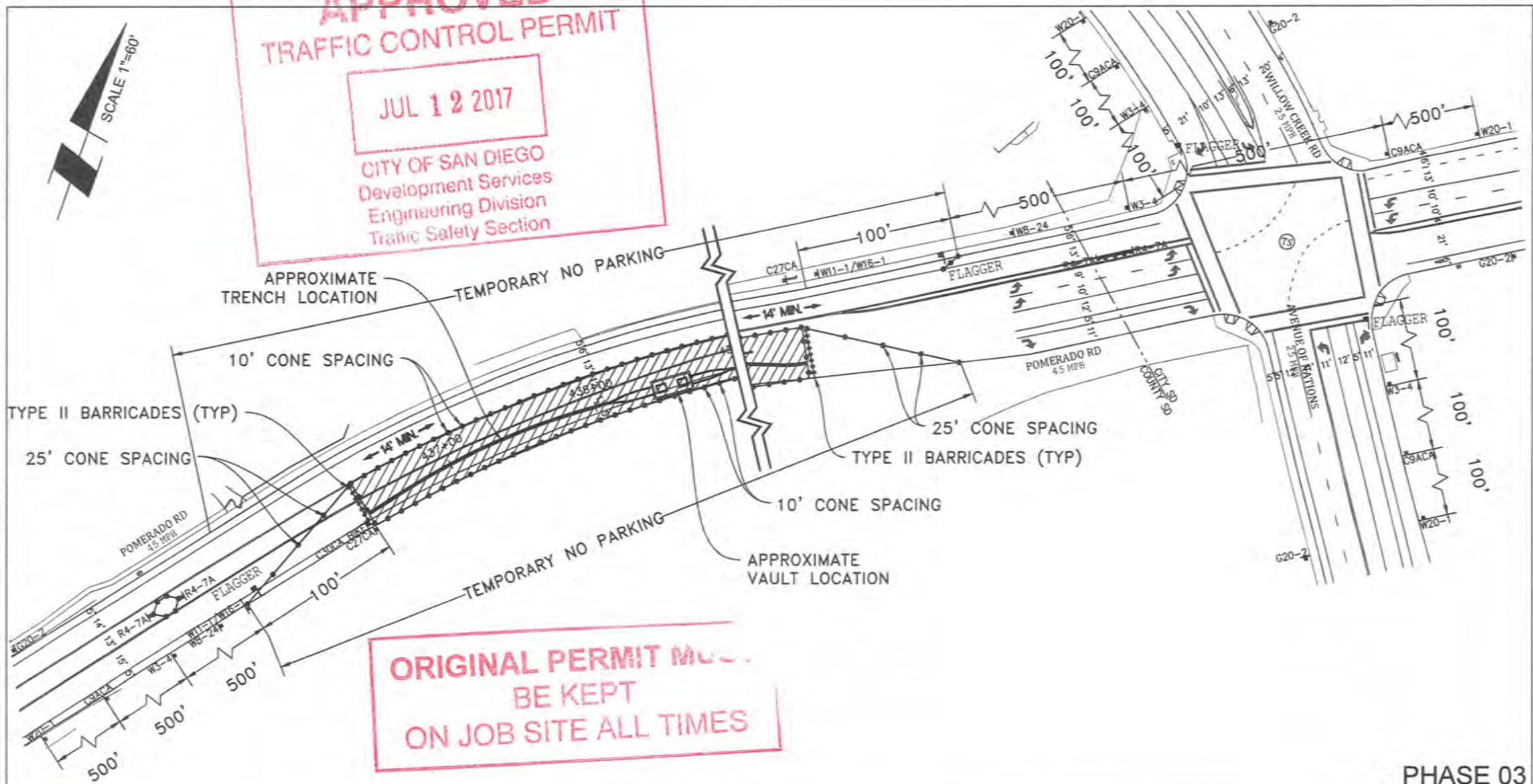
SHEET 1 OF 4



**APPROVED**  
**TRAFFIC CONTROL PERMIT**

JUL 12 2017

CITY OF SAN DIEGO  
 Development Services  
 Engineering Division  
 Traffic Safety Section



**ORIGINAL PERMIT MUST  
 BE KEPT  
 ON JOB SITE ALL TIMES**

**PHASE 03**

UTILITY SURVEYORS, INC.



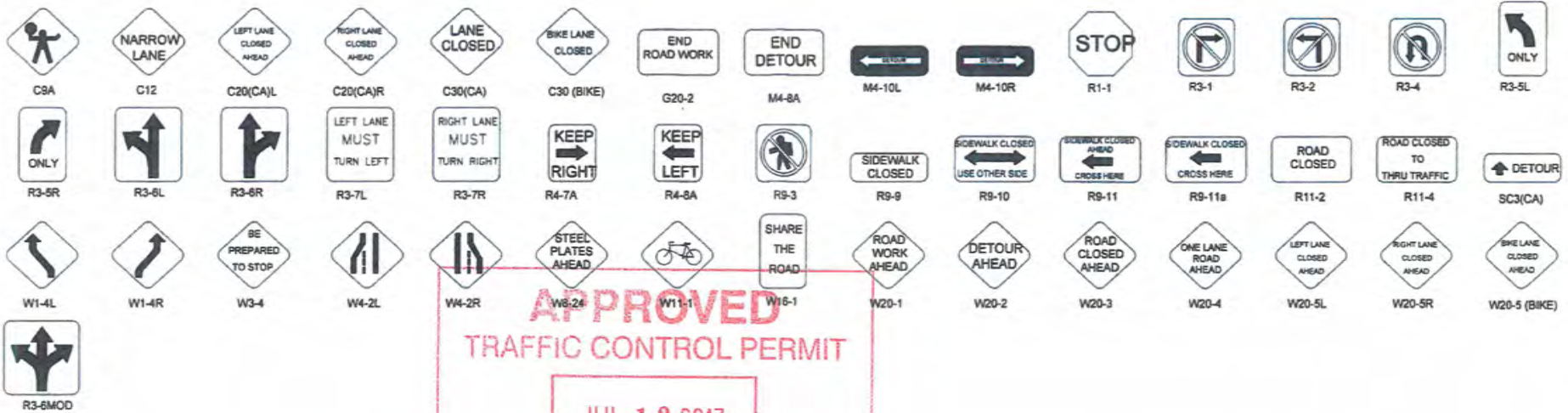
**Gail McMorrán**  
 President

2534 EAST EL NORTE PARKWAY, SUITE C  
 ESCONDIDO, CA 92027  
 PHONE: (760) 480-2347  
 CELL: (760) 419-3738

<b>PROJECT NAME:</b> TL23071 – Sycamore Canyon Substation To Penasquitos Substation – 230 KV Underground		<b>DATE:</b> Mar 2, 2017
<b>AIRX JOB#:</b> X160218	<b>THOMAS GRID#:</b> –	<b>DESIGNED BY:</b> Clint Jones
<b>TYPE OF WORK:</b> TRENCHING / CONDUIT		<b>DRAWN FOR:</b> SAN DIEGO COUNTY
<b>MISC/POTHOLES#:</b>		

**SHEET 4 OF 4**

**SIGN LEGEND**



APPROVED  
TRAFFIC CONTROL PERMIT  
JUL 12 2017

APPROACH SPEED (MPH)	MINIMUM DISTANCE (FEET) BETWEEN SIGNS AND FROM LAST SIGN TO TAPER
25	100
30	250
35	250
40	250
45	350
50	350
55+	350

L	MINIMUM TAPER LENGTHS (L) (FEET) FOR 12-FOOT LANE			BUFFER LENGTH (FEET)
	1/2	1/3	1/4	
125	65	45	155	155
180	90	60	200	200
245	125	85	250	250
320	160	110	305	305
540	270	180	360	360
600	300	200	425	425
660	330	220	495	495

TAPER	MAX CONE SPACING		
	TANGENT	CONFLICT	
25	50	12	
30	60	15	
35	70	17	
40	80	20	
45	90	22	
50	100	25	
55	110	27	

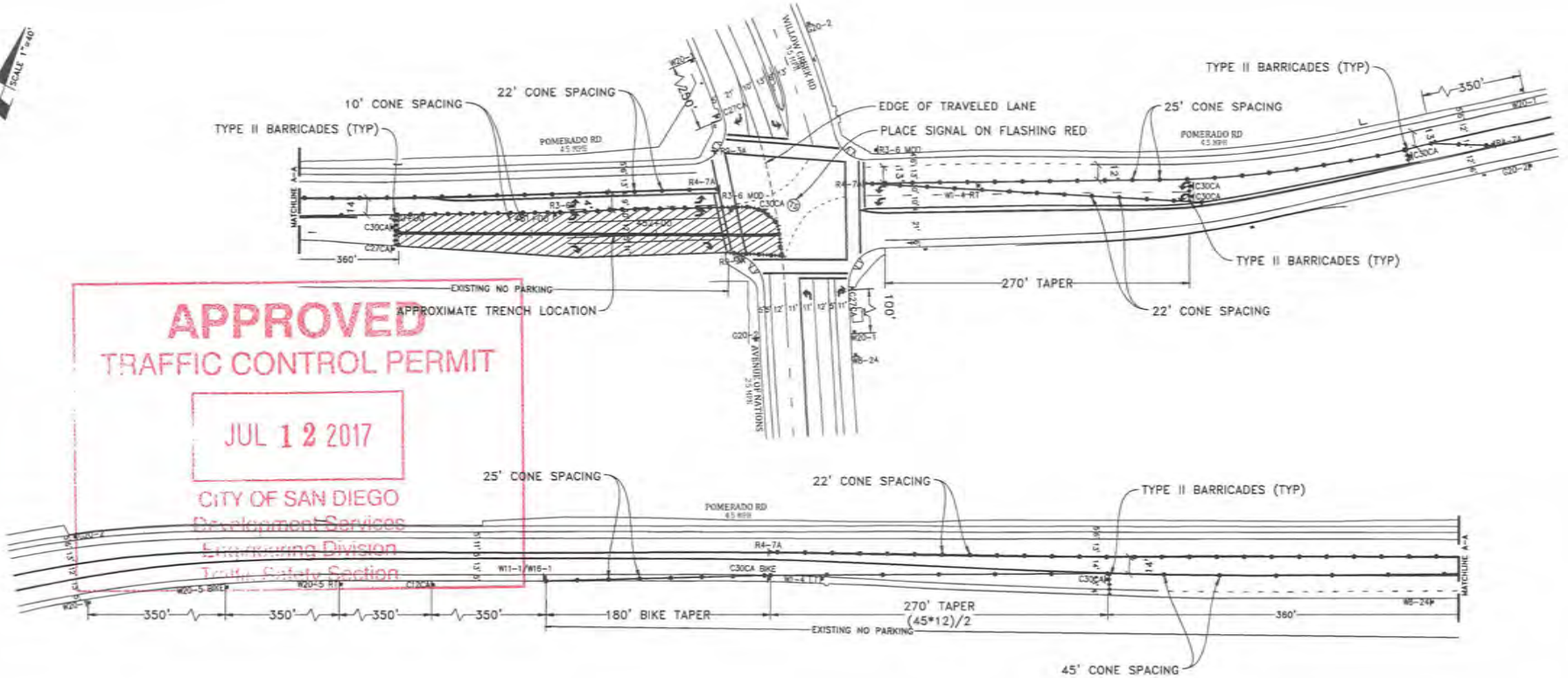
- LEGEND**
- APPROXIMATE POTHOLE LOCATION
  - SIGN
  - TRAFFIC CONES / DELINEATOR
  - BARRICADE
  - FLAGGER
  - FLASHING ARROW SIGN
  - WORK ZONE
  - CONSTRUCTION VEHICLE
  - BUS STOP

ORIGINAL PERMIT MUST BE KEPT ON JOB SITE ALL TIMES

**UTILITY SURVEYORS, INC.**  
  
**AIRX**  
 2534 EAST EL NORTE PARKWAY, SUITE C  
 ESCONDIDO, CA 92027  
 PHONE: (760) 480-2347  
 CELL: (760) 419-3736

**Gail McMorrán**  
President

<b>PROJECT NAME:</b> TL23071 – Sycamore Canyon Substation To Penasquitos Substation – 230 KV Underground		<b>DATE:</b> Mar 2, 2017
<b>AIRX JOB#:</b> X160218	<b>THOMAS GRID#:</b> —	<b>DESIGNED BY:</b> Clint Jones
<b>TYPE OF WORK:</b> TRENCHING / CONDUIT	<b>DRAWN FOR:</b> SAN DIEGO COUNTY	<b>SHEET 1 OF 4</b>
<b>MISC/POTHOLES#:</b>		



APPROVED  
TRAFFIC CONTROL PERMIT

JUL 12 2017

CITY OF SAN DIEGO  
 Development Services  
 Engineering Division  
 Traffic Safety Section

ORIGINAL PERMIT MUST  
 BE KEPT  
 ON JOB SITE ALL TIMES

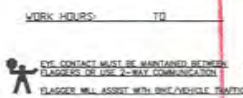
**NOTE:** CONTRACTOR WILL COORDINATE ALL WORK WITH FIRE STATION PRIOR TO START OF WORK

**NOTE:** CONTRACTOR WILL COORDINATE ALL WORK WITH TRANSIT DEPARTMENT 5 DAYS PRIOR TO START OF WORK

**NOTE:** CONTRACTOR WILL COORDINATE ALL WORK WITH EXISTING PROJECTS AND NOT CONFLICT WITH EXISTING TRAFFIC CONTROL

**NOTE:** CONTRACTOR WILL COORDINATE ALL WORK WITH RESIDENTS PRIOR TO START OF WORK

**NOTE:** CONTRACTOR WILL COORDINATE ALL WORK WITH BUSINESSES PRIOR TO START OF WORK



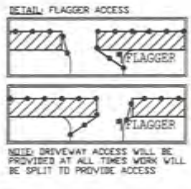
- LEGEND**
- SIGN
  - TRAFFIC CONES / DELINEATOR
  - BARRICADE
  - FLAGGER
  - FLASHING ARROW SIGN
  - WORK ZONE
  - BUS STOP

**NOTE:** FLAGGERS WILL PROVIDE ACCESS TO DRIVEWAYS AT ALL TIMES

**NOTE:** FLAGGERS WILL SAFELY GUIDE PEDESTRIANS THROUGH WORK AREA

**NOTE:** CONTRACTOR WILL ALLOW FIRE STATION INGRESS AND EGRESS AT ALL TIMES

**NOTE:** W8-24 (STEEL PLATES) AHEAD SIGNS WILL REMAIN IN PLACE FOR DURATION OF WORK

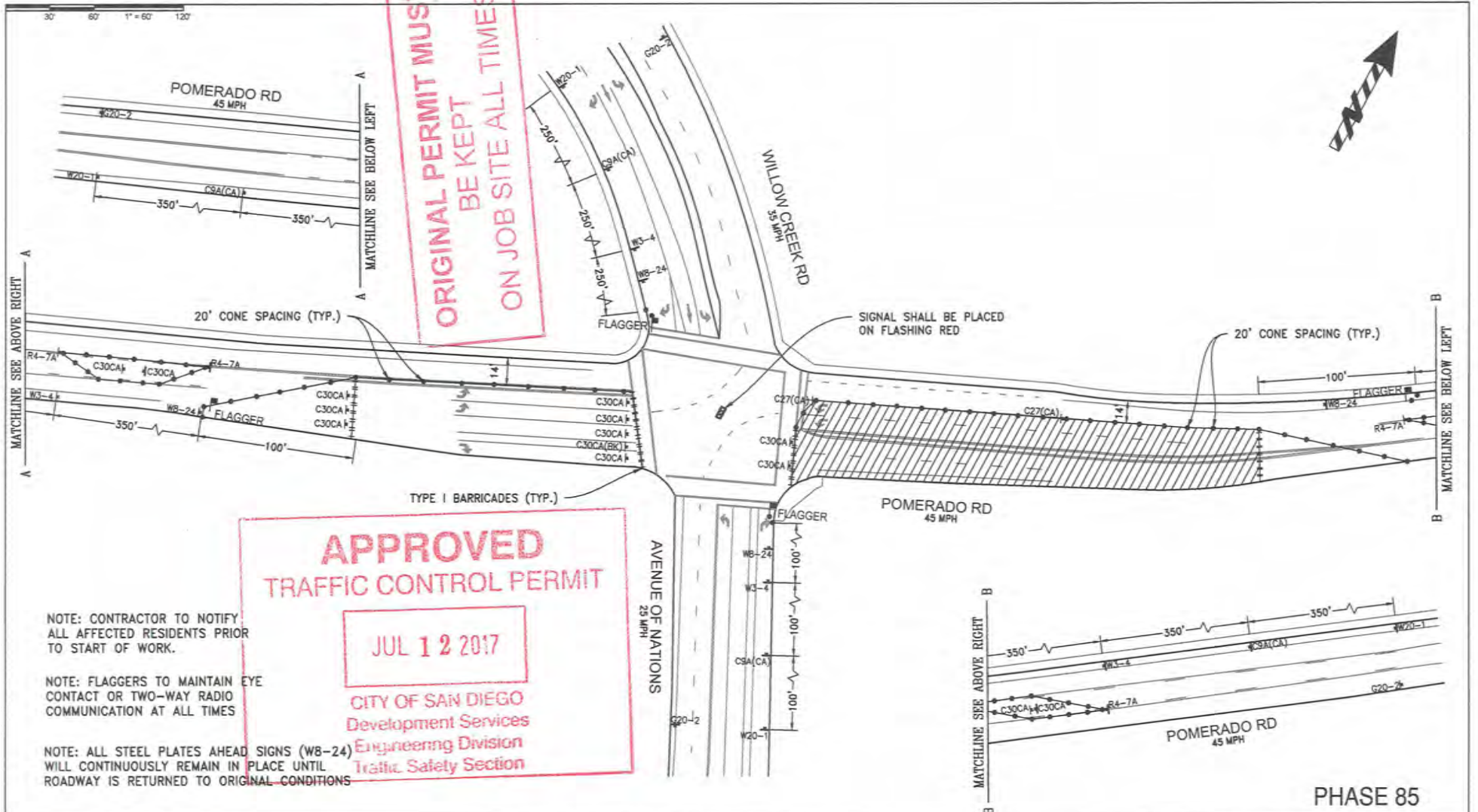


**UTILITY SURVEYORS, INC.**  
**Gail McMoran**  
 President  
 25th EAST EL NORTE PARKWAY, SUITE C  
 ESCONDIDO, CA 92027  
 PHONE: (760) 480-2547  
 CELL: (760) 418-3738

PROJECT NAME: TL23071 - SYCAMORE CANYON SUBSTATION TO PENASQUITOS - 230 KV UNDERGROUND	
AIRX JOB#: X160218	THOMAS GRID#:-
TYPE OF WORK: TRENCHING / CONDUIT	DRAWN FOR: CALTRANS
MISC./POTHOLE#:	

PHASE 82

DATE: Mar. 21, 2017  
 DESIGNED BY:  
 Clint Jones  
 SHEET 098 OF 148



ORIGINAL PERMIT MUST  
BE KEPT  
ON JOB SITE ALL TIMES

APPROVED  
TRAFFIC CONTROL PERMIT

JUL 12 2017

CITY OF SAN DIEGO  
Development Services  
Engineering Division  
Traffic Safety Section

NOTE: CONTRACTOR TO NOTIFY ALL AFFECTED RESIDENTS PRIOR TO START OF WORK.

NOTE: FLAGGERS TO MAINTAIN EYE CONTACT OR TWO-WAY RADIO COMMUNICATION AT ALL TIMES

NOTE: ALL STEEL PLATES AHEAD SIGNS (WB-24) WILL CONTINUOUSLY REMAIN IN PLACE UNTIL ROADWAY IS RETURNED TO ORIGINAL CONDITIONS



1221 S. 26TH ST  
SAN DIEGO, CA 92113  
OFFICE: (858) 259-0300  
FAX: (858) 259-0357

POSTED SPEED LIMIT (MPH)	SEE PLAN
SIGN SPACING (FEET)	SEE PLAN
TAPER LENGTH (FEET)	SEE PLAN
CONE SPACING (FEET)	SEE PLAN

DRAWN BY:	MIGUEL URESTI
PROJECT NUMBER:	
DATE:	July 6, 2017

SXPQ EAST SIDE POMERADO	
PROJECT INFORMATION	
ARB COMPANY	ROD NELSON
PROJECT CONTACT	619.295.2754 PHONE

TRAFFIC CONTROL PLANS	
CITY OF SAN DIEGO	
-	SHEET 101 OF 148

PHASE 85