



SCOPING SUMMARY REPORT

Northern San Joaquin 230-kV Transmission Project

Prepared for:



California Public Utilities Commission
Energy Division – Infrastructure and Permitting

May 2024

SCOPING SUMMARY REPORT

Northern San Joaquin 230-kV Transmission Project

Prepared for:



California Public Utilities Commission
Energy Division – Infrastructure and Permitting
505 Van Ness Ave, San Francisco, CA 94102

Contact:

Boris Sanchez
Public Utilities Regulatory Analyst III (PURA III)
Boris.Sanchez@cpuc.ca.gov

Prepared by:



Ascent
455 Capitol Mall, Suite 300
Sacramento, CA 95814

Contact:

Heather Blair
Principal

May 2024

19010160.01

TABLE OF CONTENTS

Section	Page
LIST OF ABBREVIATIONS	ii
1 BACKGROUND AND PURPOSE	1
2 SCOPING PROCESS	1
2.1 Notice of Preparation Distribution	1
2.2 Scoping Meeting	1
2.3 Outreach.....	2
3 COMMENTS RECEIVED.....	2
3.1 Written Scoping Comments	2
3.2 Overview of Comment Topics.....	2
3.3 Comment Summary	3
Appendices	
Attachment A Notice of Preparation	
Attachment B Scoping Meeting Presentation	
Attachment C Scoping Meeting Transcript	
Attachment D Written Scoping Comments	
Tables	
Table 1 Comment Letters Received by Commenter Type	
Table 2 Comment Topics and Frequency	

LIST OF ABBREVIATIONS

APCD	San Joaquin Valley Air Pollution Control District
CPUC	California Public Utilities Commission
CEQA	California Environmental Quality Act
Central Valley RWQCB	California Central Valley Regional Water Quality Control Board
EIR	Environmental Impact Report
EMF	Electromagnetic Field
kV	kilovolt
NOP	Notice of Preparation
project	Northern San Joaquin 230 kV Transmission Project
PG&E	Pacific Gas and Electric

1 BACKGROUND AND PURPOSE

“Scoping” refers to the public outreach process used under the California Environmental Quality Act (CEQA) to determine the coverage and content of an environmental impact report (EIR) (Public Resources Code Section 21080.4(a); State CEQA Guidelines Sections 15082(b) and 15083). The scoping comment period offers an important opportunity for the public and agencies to review and comment during the early phases of the environmental compliance process. Scoping contributes to the selection of a range of alternatives to be considered in the EIR and can also help to establish methods of analysis, identify the environmental effects that will be considered in detail, and develop mitigation measures to avoid or compensate for adverse effects. State CEQA Guidelines Section 15083(a) states that scoping can be “helpful to agencies in identifying the range of actions, alternatives, mitigation measures, and significant effects to be analyzed in depth in an EIR and in eliminating from detailed study issues found not to be important.”

This report describes the scoping process undertaken by the California Public Utilities Commission (CPUC) for the Northern San Joaquin 230 kV Transmission Project (project) proposed by Pacific Gas & Electric (PG&E). It also summarizes agency and public comments received, including those that are unrelated to the environmental review process, and identifies key issues for EIR analysis. Comments received during the scoping process are part of the public record. The comments and questions received through the public scoping process will be reviewed and considered by the CPUC in determining the appropriate scope of issues to be addressed in the EIR.

2 SCOPING PROCESS

2.1 NOTICE OF PREPARATION DISTRIBUTION

The scoping process is initiated when the lead agency issues a notice of preparation (NOP) announcing the beginning of the EIR preparation process. The NOP for the project was circulated to agencies and interested members of the public on January 10, 2024 for a 30-day review period, which closed on February 9, 2024. As required by the State CEQA Guidelines (Section 15082(1)), the NOP provided a description of the project, project location, and the probable environmental effects of the project; announced the preparation of and requested public and agency comment on the EIR; and provided information on the public scoping meeting. The NOP is included as Attachment A to this report.

The CPUC transmitted copies of the NOP via certified mail to 20 agencies including the planning departments of Alameda, Amador, Contra Costa, Sacramento, San Joaquin, Solano, and Stanislaus counties; and the cities of Escalon, Lathrop, Manteca, Ripon, Stockton, and Lodi. The Central Valley Regional Water Quality Control Board (RWQCB), San Joaquin Valley Air Pollution Control District (APCD), California Department of Transportation, and California Department of Fish and Wildlife were also directly mailed the NOP via certified mail. Copies of the NOP were sent to the Union Pacific Railroad and Central California Traction Company. The NOP was also posted with the San Joaquin County Clerk and distributed to State agencies through the State Clearinghouse, a division of the Governor’s Office of Planning and Research. The CPUC also mailed copies of the NOP to the last known mailing address of 119 property owners within 300 feet of the proposed transmission line alignment.

2.2 SCOPING MEETING

The CPUC conducted two virtual public scoping meetings for the project on January 30, 2024 at 2:30 p.m. and 6:30 p.m. The meetings were open to the public, with attendees representing landowners, organizations, and other interested parties. The meeting format consisted of a presentation by CPUC and consultant staff followed by an opportunity for attendees to provide verbal comments. The presentation included basic information about the project, ways interested parties can stay informed and engaged, and avenues by which to submit questions or comments. The slide deck presented at both meetings is included in Attachment B.

A total of about 45 individuals attended both virtual meetings. CPUC and consultant staff were available to take comments and direct questions or concerns. All verbal comments made at the scoping meetings were recorded and are included in the summary of comments in Section 3 of this report. Transcripts from the meetings are included in Attachment C.

2.3 OUTREACH

A project website has been established that provides an overview of the CPUC review process, a summary of the project and PG&E's project objectives, and a section on the ongoing environmental review. This website is regularly updated with documents available for review, including the NOP and scoping meeting presentation. (See: <https://ia.cpuc.ca.gov/environment/info/ascent/NSJTP/index.html>)

The CPUC also established a project-specific email address (NSJTP@ascent.inc) as a means of submitting comments on the CEQA review of the project. The email address was provided in the NOP, at the scoping meetings, and posted on the CPUC website. The CPUC considered all timely scoping comments received by email and incorporated them into this report.

3 COMMENTS RECEIVED

3.1 WRITTEN SCOPING COMMENTS

CPUC received 25 unique written comment submittals during the scoping period (several commenters sent identical comments via email and the US Postal Service). Comment letters received during the scoping period are reproduced in their entirety in Attachment D to this report. The total numbers of all written comments by commenter category are shown in Table 1.

Table 1 Comment Letters Received by Commenter Type

Commenter Type	No. of Comment Letters
Agencies	4
Public	19
Community Organization / Group	2
Tribes	0

The following public agencies submitted comments on the project:

- ▶ Native American Heritage Commission
- ▶ Stanislaus County
- ▶ Central Valley RWQCB
- ▶ San Joaquin Valley APCD

3.2 OVERVIEW OF COMMENT TOPICS

Verbal comments recorded during the scoping meetings and written comments received throughout the scoping period address a variety of topics. A majority of the comments (more than 80 percent) include mention of topics related to alternatives, generally including non-wire options that the City of Lodi could implement independently, route modification requests, suggestions to upgrade existing lines, and requests to pursue undergrounding of the transmission line. In addition, several common topics raised in the comments related to property value and conflicts

with agricultural production (including limiting the use of aerial spraying), the effect of the project on the aesthetic qualities of the project area, and human health hazards from potential exposure to electromagnetic fields (EMFs).

3.3 COMMENT SUMMARY

To inform the environmental analysis and assist in the preparation of the EIR, the individual comments and concerns received during the scoping period are categorized into six broad topic areas. A description of the topic areas and the number of comments received pertaining to each theme is provided in Table 2.

Table 2 Comment Topics and Frequency

Comment Topic	Number of Comments
General Comment: Comments related to general opinions on the project or other comments unrelated to any of the categories listed below.	15
CEQA Process: Comments related to the CEQA review process, such as the length of the public review period.	1
Project Description: Comments related to specific aspects of the proposed project, such as project design or schedule.	4
Environmental Impacts: Comments related to possible impacts on the physical environment from the project, such as noise impacts during project construction or operation, or possible effects on biological resources from project components.	25
Alternatives: Comments related to potential alternatives to the project, such as siting proposed infrastructure at a different location or using alternative technologies or methods.	21
Electromagnetic Fields: Comments related to potential impacts on human health and other environmental resources specific to EMFs resulting from project components.	6

3.3.1 General Comments

- ▶ Stanislaus County shared that the agency had no comments on the project.
- ▶ Several property owners expressed dissatisfaction with PG&E’s outreach efforts, stating that the communication notifying residents of the project, mainly through the mail, was inadequate. There were also inquiries regarding how residents will be informed about the project and kept updated.
- ▶ Property owners also requested further clarification about the exact location of proposed project components and how specific properties would be temporarily affected during construction.
- ▶ Comments expressed concerns regarding reduction of property value.
- ▶ Clarification was requested regarding whether landowners would be compensated.

3.3.2 CEQA Process

- ▶ One commenter recommended outreach to Lodi Wine Grape Commission, Lodi District Grape Growers Association, Visit Lodi, and Lodi Chamber of Commerce.

3.3.3 Project Description

- ▶ Commenters questioned the need for the project.
- ▶ Several general questions were posed concerning the construction, maintenance, and operation of the project.
- ▶ Commenter’s suggested that PG&E should use existing service roads for accessing poles to minimize environmental impacts. Opposition was expressed to use of private driveways.

3.3.4 Environmental Impacts

AESTHETICS

- ▶ Commenters expressed concern that the proposed overhead power lines would have aesthetic impacts and would be visually prominent on the landscape.
- ▶ Commenters suggested that the assessment of aesthetics in the Proponents Environmental Assessment did not adequately consider the unique characteristics of the properties affected by the project's proposed location and should be reevaluated.

AGRICULTURE

- ▶ Commenters stated that the project would cause temporary disruptions during construction and permanent disruption to farmland near power lines because farmland would be taken out of production.
- ▶ Commenters expressed concerns about losing access to orchards, vineyards, and agricultural land.
- ▶ Local farmers with existing overhead lines reported negative impacts and challenges with agricultural operations.
- ▶ Commenters identified potential conflicts with existing agricultural wells and the need to relocate existing wells and associated infrastructure. Additionally, commenters requested that the installation of towers avoid underground water infrastructure like irrigation pipes.
- ▶ Commenters stated that the proposed project alignment would complicate agricultural operations and result in diminished land values and financial returns.
- ▶ Commenters stated that the project lines would restrict landowner's ability to use aerial application of materials (e.g., fertilizer) to vineyards and fields, requiring less efficient and more costly alternatives.
- ▶ Comments identified potential for the project to negatively impact Lodi's expanding agrotourism and wine industry.
- ▶ Comments raised equity issues for small farmers, who are disproportionately disadvantaged compared to larger farming operations.
- ▶ Commenters noted that the presence of power lines could limit property owner's use of land and ability to change crops.
- ▶ Commenters indicated that construction of the project would degrade high-quality soil and limit agriculture production.

AIR QUALITY, GREENHOUSE GAS EMISSIONS, AND ENERGY

- ▶ The San Joaquin Valley APCD recommended conducting detailed modeling of construction emissions, utilizing the cleanest available off-road equipment, and preparing a Health Risk Assessment alongside ambient air quality analyses.
- ▶ One comment mentioned concern about dust impacts and associated health implications during construction and along access roads.
- ▶ Comments suggested that the EIR assess induced electrical demand; specifically, that increasing the size of the transmission lines could result in higher electricity consumption from non-renewable sources.

BIOLOGICAL RESOURCES

- ▶ One comment indicated that the project would negatively impact threatened and endangered species, leading to the displacement or harm of species like elk and grey owls, large-flowered fiddleneck, California salamander, tri-colored blackbird, Swainson's hawk, giant garter snake, and the riparian brush rabbit.

CULTURAL RESOURCES

- ▶ The Native American Heritage Commission submitted a comment that summarizes the regulatory requirements in Assembly Bill 52 and Senate Bill 18 related to tribal consultation.

HAZARDS AND HUMAN HEALTH

- ▶ A commenter expressed concern that power lines could cause fires if they fall.
- ▶ Comments related to agricultural impacts from constrained use of aerial application equipment also expressed concern about safety hazards to pilots.

HYDROLOGY AND WATER QUALITY

- ▶ The Central Valley RWQCB advised that the project comply with regional and state regulations to protect the quality of surface and groundwater.
- ▶ Several of the comments related to agricultural impacts from conflicts with wells also expressed concern about groundwater quality of these wells.

LAND USE

- ▶ Commenters indicated the future development of private property could be constrained due to the presence of project infrastructure.

NOISE

- ▶ Commenters expressed concern with operational noise, including corona noise from the overhead lines.
- ▶ Commenters noted that construction of the project would create noise, which could be a nuisance, and interfere with daily life.

3.3.5 Alternatives

- ▶ Commenters suggested increasing the capacity of existing power lines, specifically the Lockeford Industrial 60 kV or other 60 kV/115 kV lines, and considering the expansion of existing infrastructure as an alternative to building new towers. For example, upgrading one of the four existing single-circuit 60 kV lines to a double circuit to address overheating and reliability issues.
- ▶ Commenters expressed support for undergrounding the proposed transmission lines to reduce agricultural and aesthetic impacts, as well as minimize impacts on property values.
- ▶ Commenters requested that power lines be routed along existing power line corridors, major highways, paved roads, rail lines, or property lines rather than cutting across private property. For example, along Kettleman Lane or Harney Lane. An abandoned rail line right of way was also identified as a potential routing option to limit the impact on landowners.

-
- ▶ Commenters recommended to consideration of the Central Route identified by PG&E, along Highway 12/Victor Road, and westward direction along Kettleman Lane rather than diverting south at Highway 88 to cut through multiple farms and vineyards.
 - ▶ A comment provided two alternatives proposed at Locust Tree Road: extending the line's angle westward to put the line at the property's northern edge or shortening the line to position it along the property's southern boundary.
 - ▶ Comments suggested that the CPUC identify an alternative route with fewer residences, farms, vineyards, and wine-related businesses.
 - ▶ Commenters suggested that the City of Lodi should transition to renewable energy to help meet energy demand. For example, a commenter suggested installing a large solar generation facility to produce power locally rather than transmit it from the north-south Bellota line to the Lockeford substation.
 - ▶ Some commenters expressed a preference for a "no project" alternative.

3.3.6 Electromagnetic Fields

- ▶ Commenters stated concerns over EMF exposure as it may deter farmers from working near power lines, which would negatively impact farming operations.
- ▶ Concern was raised that adding high-voltage lines where there are existing lines will amplify health impacts on property owners.
- ▶ Commenters stated that EMF could interact with smartphones and other electronic devices.
- ▶ Concern was expressed about possible long-term and short-term health impacts on residents, guests, and livestock due to high-voltage transmission lines in proximity to homes.

Attachment A

Notice of Preparation



California Public Utilities Commission



To: State Clearinghouse, Responsible and Trustee Agencies, Property Owners, and Interested Parties

From: Mr. Boris Sanchez, CPUC Project Manager

Subject: NOTICE OF PREPARATION OF AN ENVIRONMENTAL IMPACT REPORT AND NOTICE OF PUBLIC SCOPING MEETING FOR THE NORTHERN SAN JOAQUIN 230 KV TRANSMISSION PROJECT

(CPCN Application No. A2309001)

Date: January 10, 2024

The Northern San Joaquin 230 Kilovolt (kV) Transmission Project (Project) is proposed by PG&E and Lodi Electric Utility (LEU) to address reliability and capacity issues identified by the California Independent System Operator (CAISO) on the existing PG&E 230 (kV and 60 kV systems in northern San Joaquin County, California. The Project would be partially constructed by PG&E, an investor-owned utility regulated by the California Public Utilities Commission (CPUC), and partially constructed by LEU, a publicly owned utility operated by the City of Lodi and a member of the Northern California Power Agency.

PG&E filed an Application for Public Convenience and Necessity Authorizing the Construction of the Northern San Joaquin 230 kV Transmission Project on September 1, 2023 (CPCN Application No. A2309001). CPUC has reviewed and deemed the application complete. Pursuant to Rule 2.4 of CPUC's Rules of Practice and Procedure, the Application for Public Convenience and Necessity package also includes a Proponent's Environmental Assessment (PEA).

As lead agency under the California Environmental Quality Act (CEQA), the CPUC will prepare an Environmental Impact Report (EIR) to conduct an objective analysis of the effects of the proposed Project in compliance with CEQA. The CPUC will use the EIR, in conjunction with other information prepared for the CPUC's record of this proceeding, to act on PG&E's application.

In order to obtain early feedback on the environmental issues to be addressed in the EIR, the CPUC is initiating the scoping process with a scoping period from January 10 through February 9, 2024.

WHAT IS SCOPING?

As required by CEQA, scoping is the process of soliciting public and agency input regarding the scope and content of an EIR, in advance of its preparation. Accordingly, the CPUC is requesting comments to inform the actions, alternatives, mitigation measures, and environmental effects to be analyzed in the EIR. This notice includes a brief description of the Project, a brief summary of the anticipated potential impacts, information on public meetings, and how to provide input on the scope and content of the EIR. After the public scoping period has ended, a Scoping Report will be prepared to summarize the comments received. This NOP and the Scoping Report will be included as an appendix to the Draft EIR and will also be available on the CPUC's website for the Project with other Project documents and reports, including PG&E's application and PEA. CPUC's website can be accessed at the following link or with the QR code: <https://ia.cpuc.ca.gov/environment/info/ascent/NSJTP/index.html>



Protecting California since 1911

The CPUC regulates privately owned electric, natural gas, telecommunications, water, railroad, rail transit, and passenger transportation companies.



@CaliforniaPUC

PROJECT DESCRIPTION

The Project would loop the existing overhead PG&E Brighton-Bellota 230 kV transmission line through an expanded PG&E Lockeford Substation and install a new overhead double-circuit 230 kV transmission line between PG&E Lockeford Substation and the proposed PG&E Thurman Switching Station at LEU's existing Industrial Substation. LEU would construct the LEU Guild Substation, a new 230/60 kV substation, between its LEU Industrial Substation and the new PG&E Thurman Switching Station. At the LEU Guild Substation, the new PG&E 230 kV transmission line would terminate, and LEU transformers would step down the power from 230 kV to 60 kV to connect with the LEU Industrial Substation.

The proposed Project would shift approximately 148 megawatts (MW) of load from the existing PG&E northern San Joaquin 60 kV system to a new PG&E 230 kV source. Moving the LEU load to the PG&E 230 kV source would address existing and projected voltage issues and thermal overloads on PG&E's 230/60 kV system, provide greater reliability to other existing PG&E customers within northern San Joaquin County, and accommodate forecasted demand growth. The normal Load Serving Capability of the Lockeford-Lodi system would increase from 194 MW to approximately 404 MW with the proposed 230 kV system upgrade under normal operating conditions.

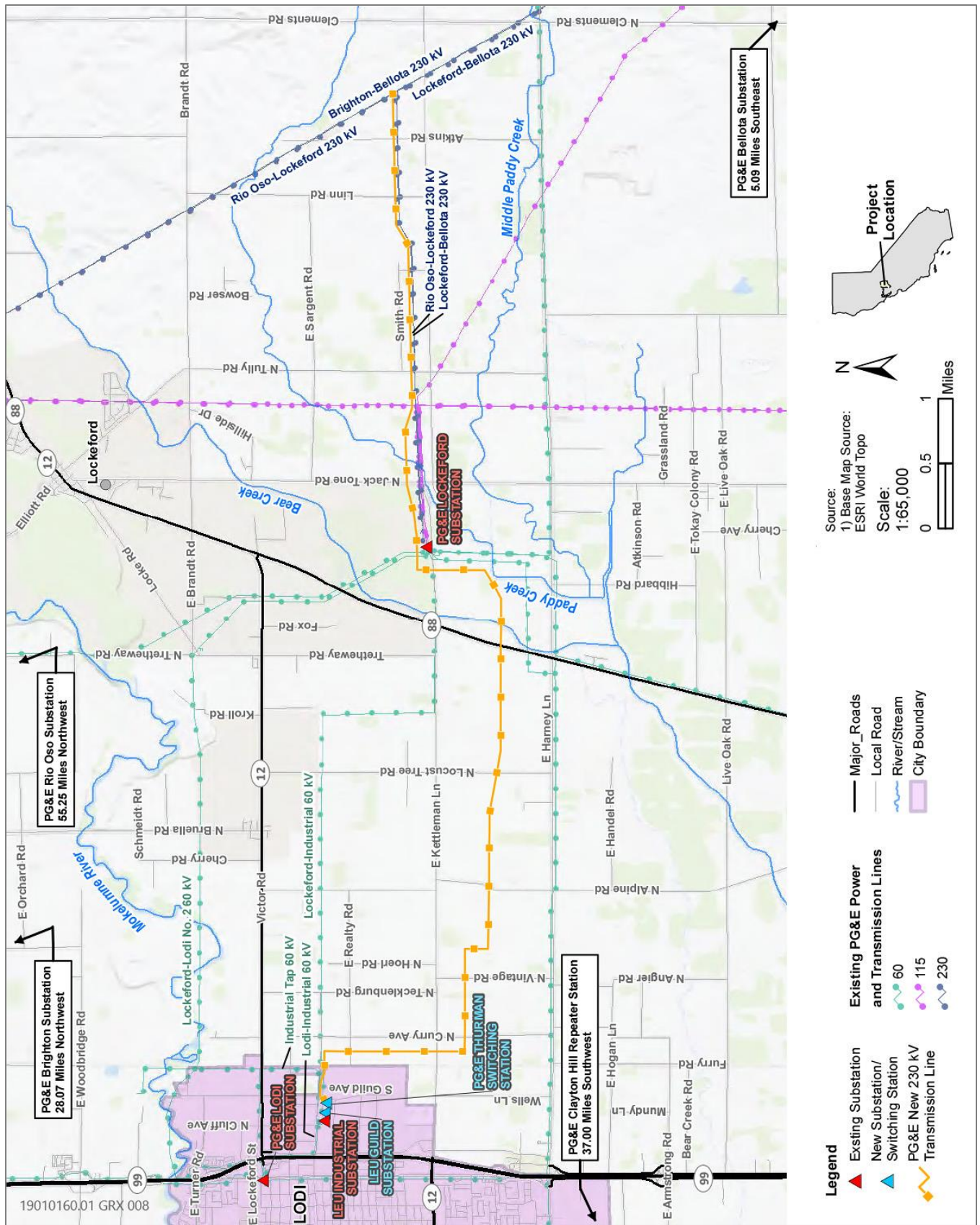
As part of this Project, PG&E would also update its system protection scheme at four remote-end substations (Bellota, Brighton, Lodi, and Rio Oso), which are located in Linden, Sacramento, Lodi, and Rio Oso, respectively. PG&E would also install two, 6-foot dish antennas on an existing microwave tower at the existing Clayton Hill Repeater Station (on a communication tower) in Contra Costa County to create a new digital microwave path allowing redundant communication into the PG&E Thurman Switching Station in support of PG&E's system protection scheme.

Applicant Proposed Measures and Best Management Practices

The proposed PG&E facilities, combined with the new LEU Guild Substation and modified Industrial Substation, constitute the Project being evaluated under CEQA. PG&E has developed applicant proposed measures (APMs) that are incorporated into PG&E's components of the Project. These measures are considered binding descriptions of Project design and implementation that are integral to the Project. Similarly, LEU has developed best management practices (BMPs) that would apply to the LEU components of the Project. Because PG&E and LEU have committed to implementing their respective APMs and BMPs, the EIR will evaluate these measures as part of the proposed Project.

LOCATION

The proposed Project is primarily located within unincorporated areas of northeastern San Joaquin County and partially within an industrial area of the City of Lodi. The Project would include construction, modification, and operation of electrical infrastructure (including power lines, transmission lines, a switching station, and substations) from an existing PG&E 230 kV transmission corridor that traverses roughly northwest-southeast of Atkins Road in unincorporated San Joaquin County to an existing substation in eastern Lodi, approximately 9 miles to the west (see Figure 1). Other improvements to update PG&E's system protection scheme would occur within existing facilities located in Linden, Sacramento, Lodi, Rio Oso, and in Contra Costa County.



Source: PG&E 2023.

Figure 1 Project Location Overview

PROBABLE ENVIRONMENTAL EFFECTS OF THE PROJECT

The evaluation in the PEA prepared by PG&E and LEU does not identify any significant impacts from Project construction or operation. The EIR will independently and objectively evaluate the potential environmental effects of the Project and the need for mitigation. The following issues identified in CEQA Guidelines Appendix G will be addressed: aesthetics, agriculture resources, air quality, biological resources, cultural resources, energy, geology and soils (including paleontology), greenhouse gas emissions, hazards and hazardous materials, hydrology and water quality, land use and planning, mineral resources, noise, population and housing, public services and recreation, transportation, tribal cultural resources, utilities and service systems, and wildfire.

Non-environmental issues such as economic impacts and assessment of Project need are outside the scope of CEQA and will not be addressed in the EIR, although these issues may be addressed through the CPUC's concurrent proceeding for the Project. The EIR will also not consider electric and magnetic fields (EMFs) that would be generated by the Project in the context of the CEQA analysis of potential environmental impacts because there is no agreement among scientists that EMFs create a potential health risk and there are no standards for defining health risk from EMFs.

As anticipated by CPUC, the probable environmental effects of the proposed Project for each resource area that will be addressed in the EIR are summarized below.

- Aesthetics: The Project area is predominantly agricultural in nature and includes residential parcels, particularly within the City of Lodi. The alignment would cross roadways designated as scenic routes by San Joaquin County (North Jack Tone Road and SR 12, which is a designated scenic highway approximately 4 miles north of the Project alignment). The EIR will evaluate the potential for substantial adverse impacts to the existing visual character or quality of public views and the effects of new sources of light and glare.
- Agriculture resources: Portions of the new PG&E 230 kV transmission line (approximately 57 new tubular steel poles) and existing PG&E 60 kV lines are located on designated agricultural land. The PG&E Lockeford Substation expansion is proposed on PG&E property that is categorized as Prime Farmland and Farmland of Statewide Importance. The effect of converting agricultural land for utility infrastructure will be evaluated in the EIR.
- Air quality: The EIR will evaluate the potential for the Project to conflict with or obstruct implementation of an applicable air quality plan, result in a cumulatively considerable net increase of any criteria pollutant for which the region is non-attainment under an applicable federal or state ambient air quality standard, expose sensitive receptors to substantial pollutant concentrations, or result in other emissions (such as those leading to odors) adversely affecting a substantial number of people.
- Biological resources: The Project area has been previously disturbed by development, landscaping, and agriculture. The potential presence of sensitive vegetation communities and habitats identified in local plans, policies, or regulations, or as designated by CDFW or USFWS, including wetlands and riparian habitat, will be assessed and potential effects will be evaluated in the EIR. The EIR will also evaluate the Project's potential for effects on special-status and migratory species, conflicts with local regulations that protect biological resources, and the potential to create a substantial collision or electrocution risk for birds and bats.
- Cultural resources: Project activities could involve ground disturbance to a depth of up to approximately 30 feet. Buried precontact resources potentially exist in portions of the Project area, based on the close proximity to freshwater and the relatively recent age of the sediments. Historic-era resources may occur near historic railroad alignments and homesteads. Potential for an adverse change in the significance of cultural resources will be evaluated in the EIR.
- Energy: The EIR will evaluate the potential for the Project to result in a significant environmental impact due to wasteful, inefficient, or unnecessary consumption of energy resources during Project construction or operation.
- Geology and soils: No known active faults are located within approximately 10 miles of the Project, and the Project site is not within a known area of liquefaction hazard. The EIR will evaluate the potential for the Project to result in substantial soil erosion; or landslide, lateral spreading, subsidence, liquefaction, or collapse. Potential effects on paleontological resources will also be evaluated.

- Greenhouse gas emissions: The EIR will evaluate the potential for the Project to generate greenhouse gas emissions, either directly or indirectly, that may have a significant impact on the environment, based on a quantified analysis of emissions associated with construction and operation.
- Hazards and hazardous materials: The EIR will evaluate whether the Project components would be located on a site that is included on a list of hazardous materials sites compiled pursuant to Government Code Section 65962.5. The EIR will evaluate the potential for the Project to create a significant hazard to the public or the environment through the routine transport, use, or disposal of hazardous materials; or a reasonably foreseeable accident.
- Hydrology and water quality: The Project traverses the Lower Mokelumne River, Middle River-San Joaquin River, and Bear Creek watersheds and is within 3 miles of the Calaveras River and Fivemile Creek-San Joaquin River watersheds. The Project is entirely within the Eastern San Joaquin Groundwater Subbasin of the San Joaquin Groundwater Basin. The EIR will evaluate the potential for the Project to substantially degrade surface or groundwater quality, impede sustainable groundwater management, alter existing drainage patterns, or risk release of pollutants due to flooding.
- Land use and planning: Project components proposed by PG&E would not be subject to local discretionary land use or planning regulations. However, LEU's portion of the project would be subject to local regulation. The EIR will evaluate the potential effects of the Project related to any conflicts with the existing San Joaquin County General Plan, Lodi General Plan, San Joaquin County Multi-Species Habitat Conservation and Open Space Plan, and other applicable land use plans, policies, and regulations.
- Mineral resources: The EIR will address the potential for the Project to result in the loss of availability of a known mineral resource based on location on or near mining claims, active mines, resources recovery sites, or mapped mineral resource zones.
- Noise: The EIR will evaluate whether the Project would result in exposure of persons to, or generation of, noise levels in excess of standards established in the local general plan or noise ordinance, or applicable standards of other agencies and the potential for construction to generate excessive groundborne vibration.
- Population and housing: The Project does not propose new housing, businesses, or other land use changes, including roads or infrastructure, that would induce population growth in the area. Construction and operation of the proposed Project would not displace any people or housing.
- Public services and recreation: The Project would not involve developing new residential units or services that would generate a new daytime or residential population in the area that would increase the demand for public services.
- Transportation: The EIR will evaluate the potential for the Project to conflict with any program, plan, ordinance, or policy addressing the circulation system, including transit, roadway, bicycle, and pedestrian facilities; create potentially hazardous conditions for people walking, bicycling, or driving or for public transit operations; generate vehicle miles traveled; and result in inadequate emergency access.
- Tribal cultural resources: The Project's potential effects on tribal cultural resources will be evaluated by the CPUC during tribal consultation conducted pursuant to Public Resources Code Section 21080.3.
- Utilities and service systems: The Project would require water for construction (dust suppression) and operation (insulator washing). There would not be increased demand related to wastewater generation, power, natural gas, or telecommunications as a result of the Project. The EIR will evaluate the potential for the Project to result in new or expanded utility facilities that are not identified as part of the Project, which could cause additional environmental effects.
- Wildfire: The PG&E and LEU project components within the main portion of the project, and at the four PG&E remote-end substations (Brighton, Bellota, Lodi, and Rio Oso), are not located in or near state responsibility areas and, therefore, are not located on land classified by fire hazard severity zone. PG&E Clayton Hill Repeater Station is located within a state responsibility area that is classified as a high fire hazard severity zone. The CPUC 2021 High Fire-Threat Map designates fire-threat areas that require enhanced fire safety. Other than PG&E Clayton Hill Repeater Station within Tier 2 – Elevated, the project components are located outside of mapped fire hazard zones on the CPUC's High Fire-Threat Map. The EIR will evaluate the potential for the Project to exacerbate wildfire hazard or expose people to wildfire related hazards (i.e., pollutants, flooding, landslides).

SCOPING PERIOD

Information to be included in the EIR will be based in part on comments received during the scoping period. Responsible and trustee agencies under CEQA, other interested agencies and organizations, property owners, and members of the public will also have an opportunity to comment on the Draft EIR once it is issued. Pursuant to CEQA Guidelines Section 15103, the scoping period will be for 30 days following the release of this NOP. Accordingly, the scoping period for this Project begins on January 10, 2024, and closes at 5:00 p.m. on February 9, 2024. Please include the name, organization (if applicable), mailing address, and e-mail address of the contact person for all future notifications related to this process. Public comments will become part of the public record and will be published in a publicly available Scoping Report.

Please send your comments by mail to:

Boris Sanchez, CPUC
c/o Ascent, Attn: Heather Blair
455 Capitol Mall, Suite 300
Sacramento, CA 95814
via electronic mail: NSJTP@ascent.inc

SCOPING MEETINGS

To provide information about the proposed Project and CEQA process, the CPUC will hold virtual meetings on January 30, 2024. For assistance or questions about the virtual meeting contact NSJTP@ascent.inc or Boris Sanchez at (408) 705-6030.

Two Zoom meetings will be held Tuesday, January 30, 2024

Virtual Meeting No. 1	Virtual Meeting No. 2
Tuesday, January 30, 2024	Tuesday, January 30, 2024
2:30 p.m.	6:30 p.m.
Attend via Zoom: https://us06web.zoom.us/meeting/register/tZwkd-ugqD4uGN18zV99Gw7DvGxRII16AGT1	Attend via Zoom: https://us06web.zoom.us/meeting/register/tZclfuigqz0sHdQhAs-R-I_VroGbSu6OOrIT
Attend via phone: 1-669-900-6833 Meeting ID: 889 0286 5429	Attend via phone: 1-669-444-9171 Meeting ID: 838 9185 6670

Attachment B

Scoping Meeting Presentation



California Public Utilities Commission



Northern San Joaquin 230 kV Transmission Project

(CPCN Application No. A.23-09-001)

Environmental Impact Report Scoping Meeting

January 30, 2024

Scoping Meeting Logistics



This meeting is
being recorded



Video and audio
are disabled by
default



Use Q&A window
to send questions



*Thank you for your
participation*

Introductions



- California Public Utilities Commission, CEQA Lead Agency
 - Boris Sanchez, Project Coordinator
- Ascent, CPUC Consultant
 - Heather Blair, Project Manager
 - Luis Montes, Facilitator
- Lodi Electric Utility, CEQA Responsible Agency and Project Proponent
- PG&E, Project Applicant

Meeting Purpose



- To receive input from the public, agencies, and interested parties on the scope and content of the environmental impact report
- To provide information on the project and the environmental review process to inform helpful input



Scoping Meeting Agenda



- Project Background and Summary
- CEQA and the Environmental Review Process
- Environmental Impact Report (EIR) Scope and Schedule
- Public and Agency Comments on the Scope of the EIR

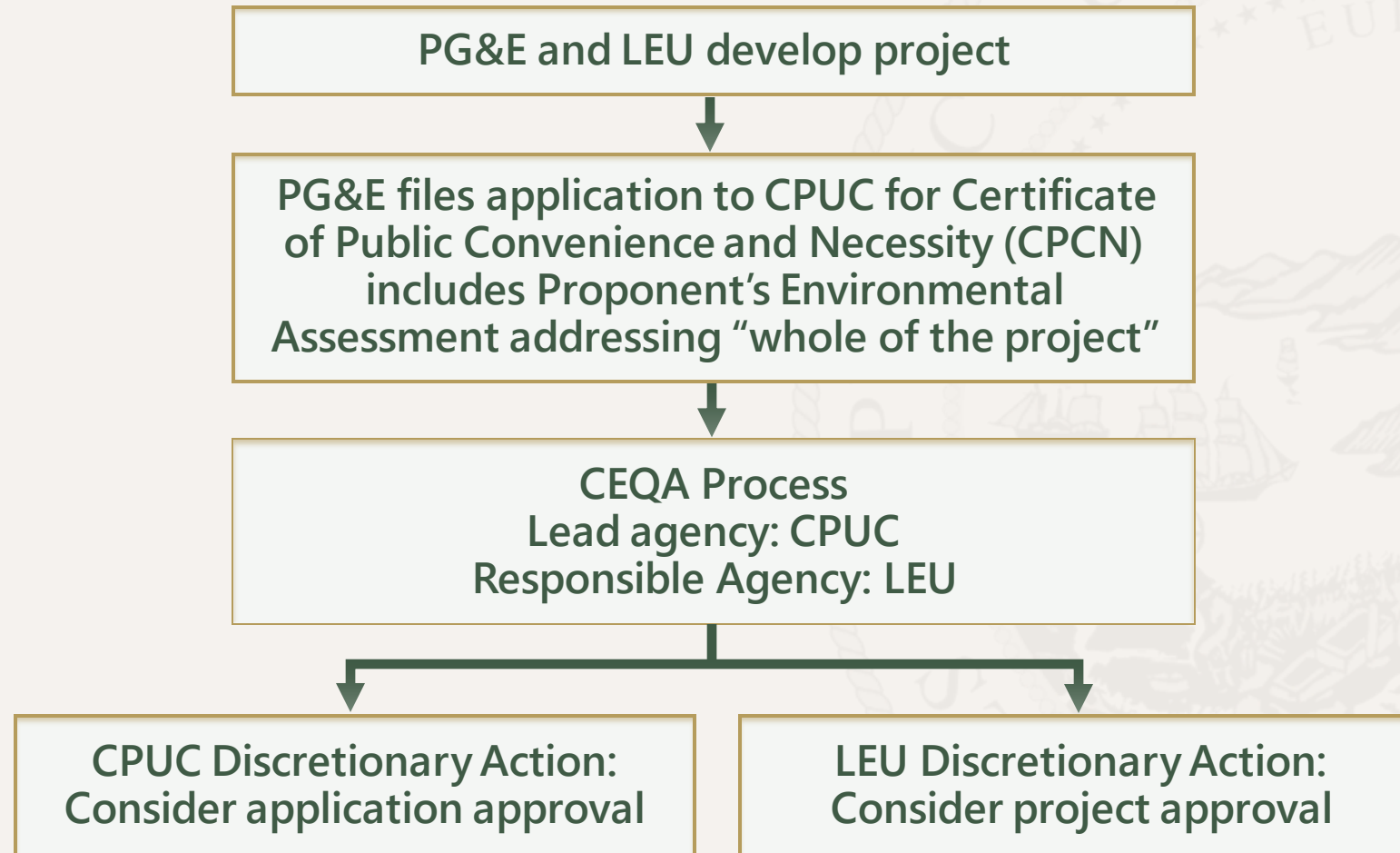
Project Background and Summary

Background



- **Proposed by:** PG&E and Lodi Electric Utility (LEU)
- **Purpose:** Address reliability and capacity issues identified by the California Independent System Operator (CAISO) on the existing PG&E 230 kV and 60 kV systems

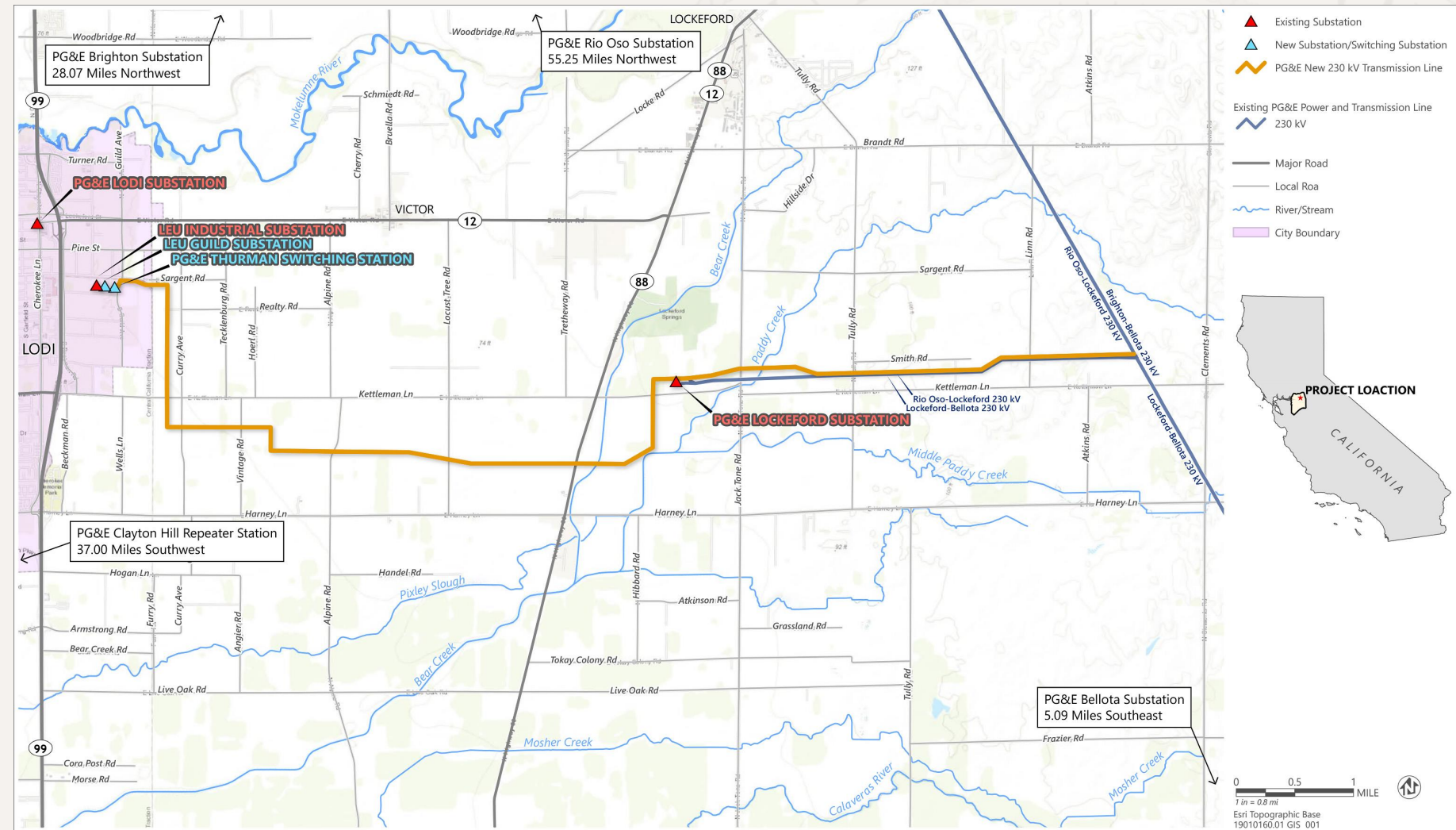
Agency Decisions and Use of the EIR



Project Location



- Northeastern San Joaquin County
- Partially within an industrial area of the City of Lodi



Project Description Summary



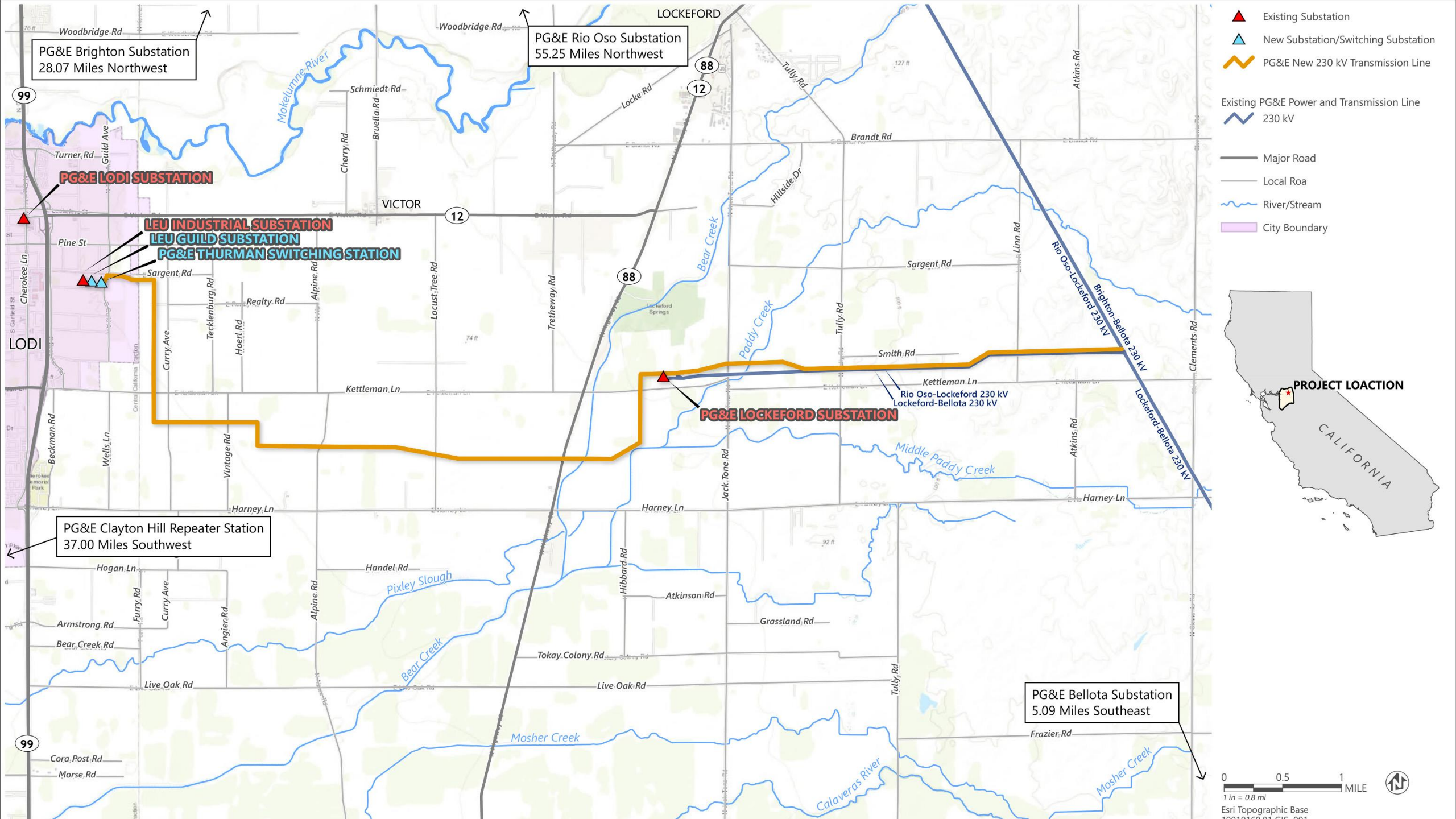
- New, overhead, double circuit, 230 kV transmission lines (10.6 miles)
- Expanded substation, a modified substation, a new substation, a new switching station
- Reconfiguration of 4 existing 60 kV lines
- Relocation or extension of 2 existing 12 kV lines
- Upgrades at 4 remote-end substations and 1 repeater station
- Includes construction, operation, and maintenance

Project Description – Proposed PG&E Project Components



- Loop the existing overhead PG&E Brighton-Bellota 230 kV transmission line through an expanded PG&E Lockeford Substation
 - Requires new 3.8-mile line extension
- Install a new 6.8-mile long, overhead, double-circuit 230 kV transmission line between PG&E Lockeford Substation and the proposed PG&E Thurman Switching Station at LEU's existing Industrial Substation
- System protection and communication upgrades
 - Existing substations in Linden, Sacramento, Lodi, Rio Oso
 - Existing Clayton Hill Repeater Station in Contra Costa County





- ▲ Existing Substation
- ▲ New Substation/Switching Substation
- PG&E New 230 kV Transmission Line
- Existing PG&E Power and Transmission Line
- 230 kV
- Major Road
- Local Road
- River/Stream
- City Boundary



PG&E Bellota Substation
5.09 Miles Southeast

PG&E Brighton Substation
28.07 Miles Northwest

PG&E Rio Oso Substation
55.25 Miles Northwest

PG&E Clayton Hill Repeater Station
37.00 Miles Southwest

Example 230-kV Monopole Structures



Proposed PG&E Lockeford Substation Expansion

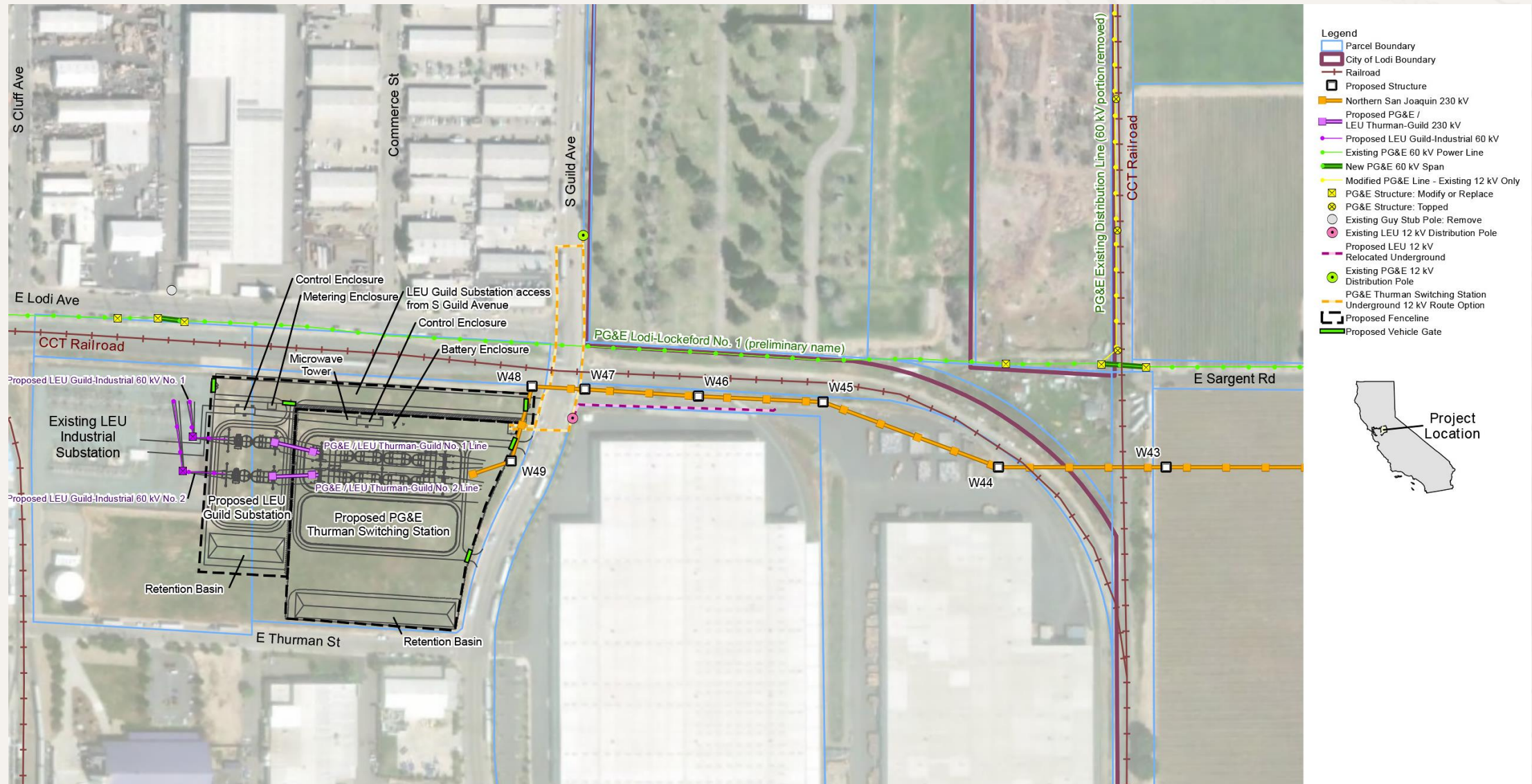


Project Description – Proposed LEU Project Components



- Construct new 230/60 kV Guild Substation
 - Terminate PG&E 230 kV lines
 - Step down power from 230 kV to 60 kV
- Reconfigure 60 kV lines between Guild and Industrial Substations
- Relocate existing 12 kV lines

Proposed Project Areas in the City of Lodi





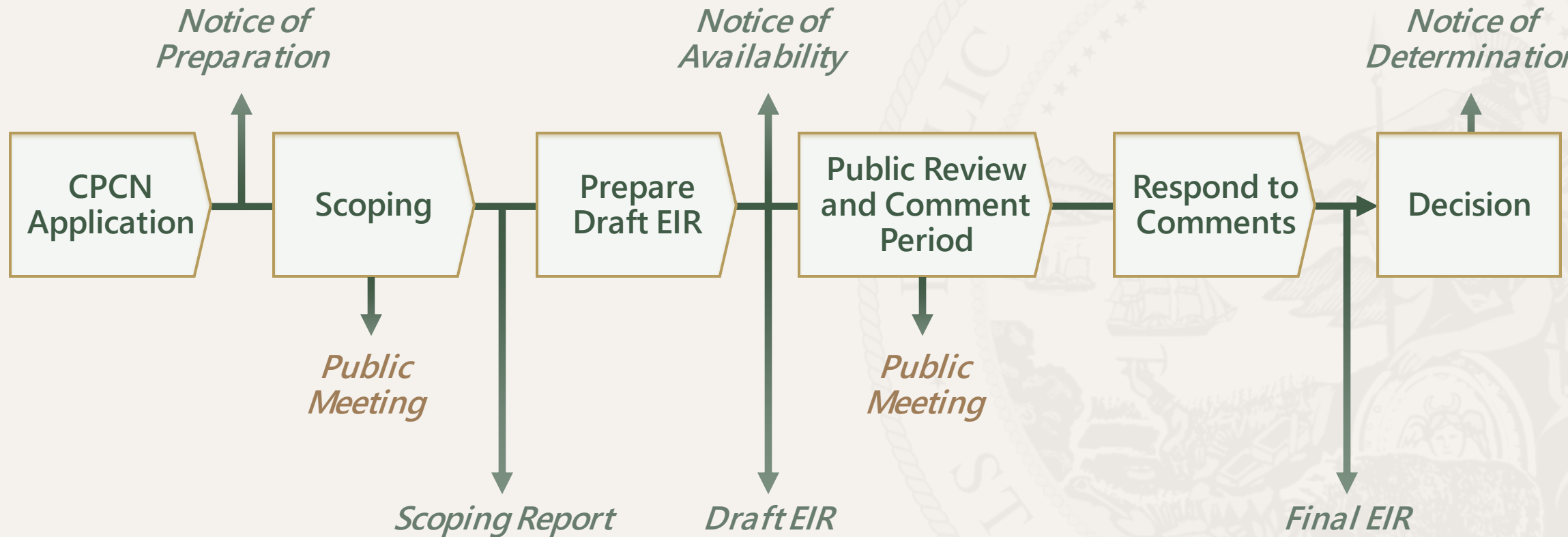
Overview of CEQA and the Environmental Review Process

California Environmental Quality Act



- Information disclosure:
 - Inform decisionmakers and the public about potentially significant environmental effects of a proposed project
- Impact reduction:
 - Identify mitigation measures and alternatives that could avoid or lessen significant impacts
- Public participation:
 - Allow for meaningful public participation and opportunities for comment
- CEQA document: Environmental Impact Report (EIR)

CEQA Environmental Review Process



EIR Scope and Schedule

Environmental Resource Areas



- Aesthetics
- Agriculture Resources
- Air Quality
- Biological Resources
- Cultural Resources
- Energy
- Geology And Soils
- Greenhouse Gas Emissions
- Hazards and Hazardous Materials
- Hydrology and Water Quality
- Land Use and Planning
- Mineral Resources
- Noise
- Population and Housing
- Public Services and Recreation
- Transportation
- Tribal Cultural Resources
- Utilities and Service Systems
- Wildfire

Environmental Analysis



- Existing Setting
 - Environmental setting
 - Regulatory setting
- Thresholds of Significance
 - What defines a “significant” impact?
- Identify Project Impacts and Mitigation
 - Mitigation measures
 - Significance after mitigation – how does mitigation reduce the impact?
- Cumulative Impacts
- Alternatives Analysis

Environmental Analysis – Alternatives



- CEQA requirements:
 - Avoid or substantially lessen significant effects of the project
 - Be legally, technically, and regulatorily feasible
 - Meet most basic project objectives
 - E.g., addressing reliability and capacity issues identified by the CAISO on the existing PG&E 230 kV and 60 kV systems

Environmental Analysis - Alternatives



- May include those identified by
 - Public, agencies, organizations
 - PG&E and LEU
 - Proponent's Environmental Assessment
 - CPUC CEQA team
- Types of potential alternatives
 - Transmission line routes
 - Infrastructure locations
 - Technologies (e.g., underground lines)
 - Other
- "No Project" Alternative

Environmental Review Schedule



Milestone	Date
Application and PEA submitted by PG&E	September 1, 2023
Notice of Preparation and Scoping	January 10 – February 9, 2024
Draft EIR Released for Public Review	Anticipated Summer/Fall 2024
Final EIR Released	Anticipated Late 2024/Early 2025
CPUC Decision	Anticipated 2025

Providing Comments on the Scope of the EIR

Providing Useful Comments



- For example:
 - Scope of environmental analysis
 - Information on resources potentially present, impact mechanisms
 - Ideas for feasible mitigation measures
 - Suggestions for alternatives to the project that could reduce or avoid potentially significant impacts
 - Public agencies, public and private organizations/groups, and individuals to whom the CPUC should provide project information
- Questions about proposed project location relative to property ownership should be directed to: NSJTP@ascent.inc

Providing Comments in this Meeting

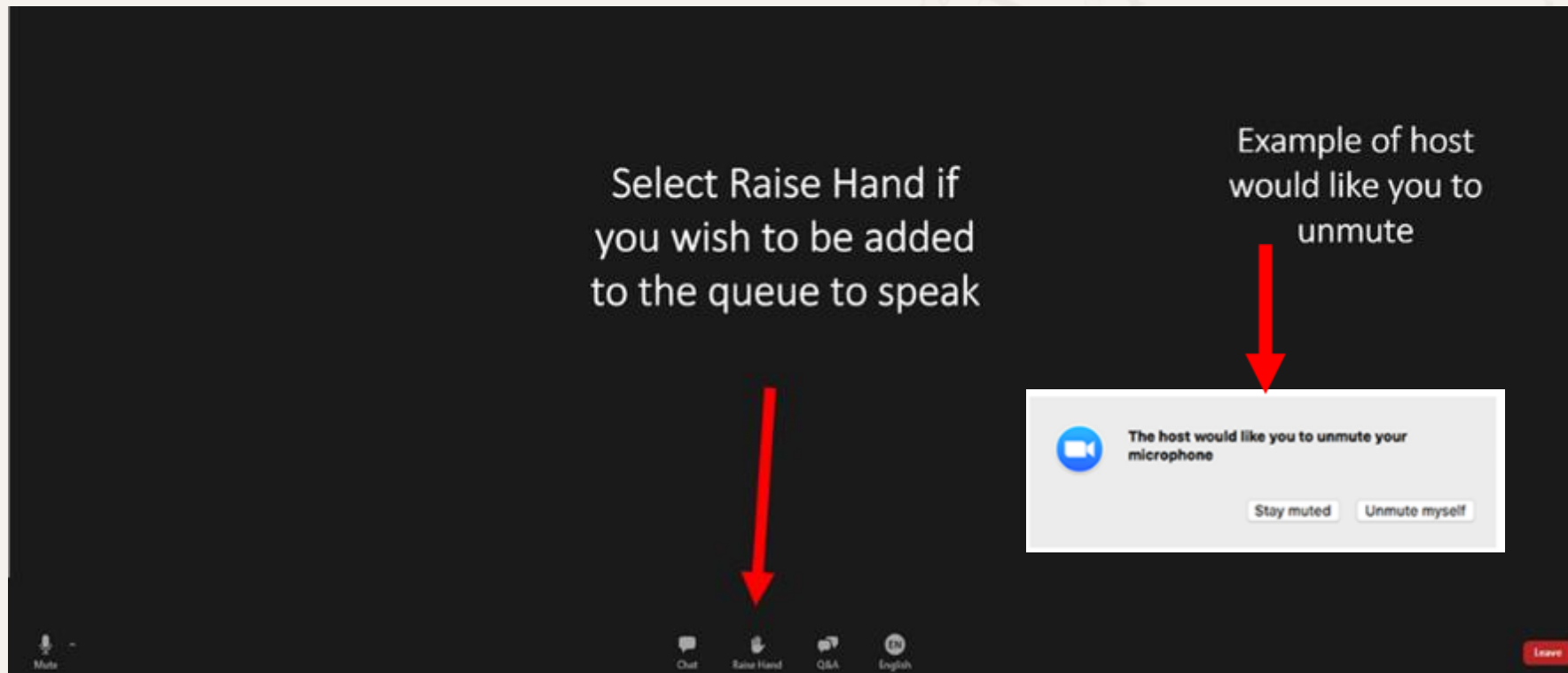


- Only verbal comments will be accepted
 - Via Zoom
 - Via Phone
 - Please limit verbal comments to 3 minutes
- Use Q&A for technical issues and clarifying questions, not comments

Providing Comments in this Meeting - ZOOM



- Via Zoom



Providing Comments in this Meeting - Phone



Via Phone

- Press Star (*) 9 to indicate you would like to speak
- Listen for the message: "The host would like you to unmute your microphone. You can press Star (*) 6 to unmute"
- When you are done with your comment, please press Star (*) 6 to re-mute

Providing Written Comments



By mail:

Boris Sanchez, CPUC

c/o Ascent, Attn: Heather Blair

455 Capitol Mall, Suite 300

Sacramento, CA 95814

By electronic mail: NSJTP@ascent.inc

The Scoping Comment Period closes on February 9, 2024

Thank You for Joining!



- Visit the Project webpage:

<https://ia.cpuc.ca.gov/environment/info/ascent/NSJTP/index.html>

- Mail comments to:

Boris Sanchez, CPUC
c/o Ascent, Attn: Heather Blair
455 Capitol Mall, Suite 300
Sacramento, CA 95814

- Email comments to NSJTP@ascent.inc



The Scoping Comment Period closes on February 9, 2024

3:00

Thank You for Joining!



- Visit the Project webpage:

<https://ia.cpuc.ca.gov/environment/info/ascent/NSJTP/index.html>

- Mail comments to:

Boris Sanchez, CPUC
c/o Ascent, Attn: Heather Blair
455 Capitol Mall, Suite 300
Sacramento, CA 95814

- Email comments to NSJTP@ascent.inc



The Scoping Comment Period closes on February 9, 2024

3:00

Thank You for Joining!



- Visit the Project webpage:

<https://ia.cpuc.ca.gov/environment/info/ascent/NSJTP/index.html>

- Mail comments to:

Boris Sanchez, CPUC
c/o Ascent, Attn: Heather Blair
455 Capitol Mall, Suite 300
Sacramento, CA 95814

- Email comments to NSJTP@ascent.inc



The Scoping Comment Period closes on February 9, 2024

3:00

Attachment C

Scoping Meeting Transcript

January 30, 2024 at 2:30 pm

WEBVTT

1

00:00:15.530 --> 00:00:22.379

Boris Sanchez, CPUC: Hello, everybody! We see a few people joining right now. We'll start shortly. Give everybody a few minutes to to sign on

2

00:00:57.150 --> 00:01:02.790

Boris Sanchez, CPUC: once again for those of you just joining. We will start shortly. Give everybody a few minutes to to log on.

3

00:01:51.250 --> 00:01:56.899

Boris Sanchez, CPUC: Okay, let's go ahead and get started. Welcome, everybody. This is the CPU C's

4

00:01:57.310 --> 00:02:06.349

Boris Sanchez, CPUC: led Northern San Joaquin, 230 Kv transmission project. This is for the environmental impact report scoping meeting.

5

00:02:06.600 --> 00:02:18.400

Boris Sanchez, CPUC: There will be another one held later on today at 6 30, if anyone's interested in joining, and we encourage everybody to look at our website that we have for for this project, and easiest way to do so

6

00:02:18.800 --> 00:02:22.680

Boris Sanchez, CPUC: outside of following HTML, is

7

00:02:23.060 --> 00:02:26.520

Boris Sanchez, CPUC: going to Google typing in Sam Joaquin.

8

00:02:26.860 --> 00:02:34.160

Boris Sanchez, CPUC: Northern San Joaquin, CPU C, and should be the first prompt that comes up for you to check the project website.

9

00:02:34.320 --> 00:02:41.930

Boris Sanchez, CPUC: Look at the Cpc review process, project overview and any any along with any helpful information that is on there

10

00:02:42.560 --> 00:02:43.469

Boris Sanchez, CPUC: next slide.

11

00:02:47.320 --> 00:02:53.190

Boris Sanchez, CPUC: So this meeting is being recorded video and audio are disabled by default.

12

00:02:53.710 --> 00:03:00.229

Boris Sanchez, CPUC: Please use the QA. Window to send any questions as we move along, and thank you for your participation

13

00:03:02.030 --> 00:03:03.010

Boris Sanchez, CPUC: next time.

14

00:03:04.520 --> 00:03:13.649

Boris Sanchez, CPUC: So introduction so my name is Boris Sanchez. I'm with the CPU. C. We're going through the sequel. We are the Sequa

15

00:03:13.790 --> 00:03:17.450

Boris Sanchez, CPUC: lead agency. Assent is the CPU C consultant

16

00:03:17.660 --> 00:03:28.639

Boris Sanchez, CPUC: Heather Blair is the project manager who will be speaking shortly, and Luis Montes is the facilitator for today a low dielectric utility, or Lu is the secret, responsible agency

17

00:03:28.660 --> 00:03:32.630

Boris Sanchez, CPUC: and the project component and Pg and E is the project applicant

18

00:03:33.430 --> 00:03:34.330

Boris Sanchez, CPUC: exciting.

19

00:03:35.460 --> 00:03:52.649

Boris Sanchez, CPUC: The purpose of this meeting is to receive input from the public agencies and interested parties on the scope and content of the environmental impact report and to provide information on project and the environmental review process to inform help helpfully. But

20

00:03:53.360 --> 00:03:54.169

Boris Sanchez, CPUC: next slide

21

00:03:55.820 --> 00:04:01.329

Boris Sanchez, CPUC: during the scoping meeting, the agenda will be for the project background, summary

22

00:04:01.970 --> 00:04:04.330

Boris Sanchez, CPUC: Ceqa environmental review process.

23

00:04:04.740 --> 00:04:09.129

Boris Sanchez, CPUC: environmental impact report or EIR for the scope and the schedule

24

00:04:09.550 --> 00:04:13.000

Boris Sanchez, CPUC: and public and agency comments

25

00:04:13.060 --> 00:04:14.950

Boris Sanchez, CPUC: on the scope of the er

26

00:04:17.529 --> 00:04:18.519

Boris Sanchez, CPUC: next slide.

27

00:04:21.260 --> 00:04:28.130

Heather Blair, Ascent: Right? I'll take it from here. Thanks for it. I'm Heather Blair, with a sense, a consultant to the CPU,

28

00:04:28.220 --> 00:04:34.099

Heather Blair, Ascent: and I'm gonna start by giving a bit of project background and summary next slide.

29

00:04:35.710 --> 00:04:44.180

Heather Blair, Ascent: The project is being proposed by by Pg. And E, which is an investor owned utility. That's regulated by the CPU C,

30

00:04:44.210 --> 00:04:54.650

Heather Blair, Ascent: and also by low dielectric utility, or Lu and Lu is a publicly owned municipal utility that's operated by the city of Lodi.

31

00:04:55.360 --> 00:05:11.140

Heather Blair, Ascent: The purpose of the project is to address reliability and capacity issues that have been identified by the California independent system operator or caliso on the existing Pg. And E, 2, 30 kb. And 60 kb, systems

32

00:05:11.910 --> 00:05:13.030

Heather Blair, Ascent: next slide.

33

00:05:14.730 --> 00:05:18.489

Heather Blair, Ascent: So a bit more context on why we're here today.

34

00:05:18.620 --> 00:05:30.599

Heather Blair, Ascent: Pg. And E. And Leu have developed together the proposed Northern San Joaquin transmission project, and as I mentioned Pg. And E. Is regulated by the CPU. C.

35

00:05:30.650 --> 00:05:47.630

Heather Blair, Ascent: So they submitted an application for what's called a certificate of public convenience and necessity, or Cpcn. They submitted that to the the cpuc, and included in that application is a proponents, environmental assessment or PA,

36

00:05:47.630 --> 00:06:07.689

Heather Blair, Ascent: and that was prepared by Pg. And E. In coordination with Leu that considers the entire project or what we call a person with, to seek whether the whole of the project and that's because the the Pg. And E. And the Leu project components are are interrelated, as I'll explain in in some later slides.

37

00:06:08.570 --> 00:06:21.819

Heather Blair, Ascent: So after the Cpc. Reviewed the application and deemed it complete that triggers the start of the sequa process, which includes preparation of an environmental impact report or Eir.

38

00:06:21.880 --> 00:06:47.050

Heather Blair, Ascent: and because Leu and CPU C are both public agencies with a discretionary action. They need to comply with the California Environmental Quality Act, or sequa. So the decision makers at Leu, and at the CPU C will use this eir when considering their action on on whether to approve the project and and the application

39

00:06:47.900 --> 00:06:49.210

Heather Blair, Ascent: next slide, please.

40

00:06:51.140 --> 00:06:59.400

Heather Blair, Ascent: So it's now some information about the proposed project. It's located in northeastern San Joaquin County.

41

00:06:59.500 --> 00:07:10.269

Heather Blair, Ascent: and several of the project proposed project components. Including those proposed by Lu are located within the Lodi city limits.

42

00:07:10.280 --> 00:07:18.799

Heather Blair, Ascent: and the remaining project components that extend east of the city of Lodi are in unincorporated areas of the county

43

00:07:19.880 --> 00:07:20.909

Heather Blair, Ascent: next slide.

44

00:07:22.840 --> 00:07:27.189

Heather Blair, Ascent: So this slide presents a summary of the proposed project.

45

00:07:27.240 --> 00:07:35.189

Heather Blair, Ascent: It includes new overhead double circuit, 230 kb, transmission lines. A total of 10 miles

46

00:07:35.200 --> 00:07:45.620

Heather Blair, Ascent: of those. It includes an expanded substation, a modified substation, a new substation, and a new switching station. And I'll go over all of this in detail.

47

00:07:45.730 --> 00:07:50.599

Heather Blair, Ascent: It also includes reconfigurations of 4 existing Cv lines.

48

00:07:50.780 --> 00:07:56.170

Heather Blair, Ascent: the relocation or extension of 2 existing 12 KD. Lines.

49

00:07:56.620 --> 00:08:13.720

Heather Blair, Ascent: upgrades at 4 remote and substations and one repeater station. And I'll mention that the environmental impact report will be considering construction operation as well as maintenance of these proposed project components.

50

00:08:14.740 --> 00:08:15.789

Heather Blair, Ascent: Next slide.

51

00:08:17.750 --> 00:08:30.090

Heather Blair, Ascent: So we'll be, we'll be explaining the proposed project in terms of Pg and E's components and Le use project components. But again, they're considered a a single project under Sequoi.

52

00:08:30.390 --> 00:08:42.819

Heather Blair, Ascent: So Pg. And E is proposing to loop it's existing overhead. Brighton Bay loaded 2 30 kb. Transmission line through an expanded Pg. And E. Lockford substation.

53

00:08:42.919 --> 00:08:52.710

Heather Blair, Ascent: So this loop? Well, it's really a connection, will require a new 3.8 mile overhead transmission line that extends from Brighton below to

54

00:08:52.800 --> 00:09:00.549

Heather Blair, Ascent: That 230 kb. Transmission line through the Pg. And E. Lockford substation which is proposed for expansion.

55

00:09:00.950 --> 00:09:19.819

Heather Blair, Ascent: and this new 2 30 Kv. Line would then continue for 6.8 miles to as an overhead double circuit on tubular steel poles from the expanded Pg. And E. Lockport substation to the proposed Pg. And E. Thurmond switching station.

56

00:09:19.840 --> 00:09:35.300

Heather Blair, Ascent: That said Le use existing industrial substation. So this work would trigger the need for system, protection and communication upgrades at other existing Pg. And E. Facilities that are mostly outside of the city of Lodi.

57

00:09:35.500 --> 00:09:45.090

Heather Blair, Ascent: The system protection upgrades would occur at Pg. And E's Lodi substation, which is just a bit north of the western terminus of the project.

58

00:09:45.250 --> 00:09:56.170

Heather Blair, Ascent: and the other upgrades would occur at existing facilities in Linden, in Sacramento, and Rio also, and also in in Contra Costa County.

59

00:09:57.040 --> 00:09:58.130

Heather Blair, Ascent: next slide.

60

00:09:59.790 --> 00:10:23.139

Heather Blair, Ascent: So now I'll I'll try to review all of that again with a a map on the slide. So, starting from the east, Pg and E is going to construct a new 3.8

mile overhead, 2 30 Kv. Line from the existing Brighton Bay, loaded 2 30 kb. Line to the existing Pg. And E. Lockford substation which is proposed for expansion.

61

00:10:23.140 --> 00:10:39.290

Heather Blair, Ascent: and then from the Lockford substation, the new overhead 2 30 Kv. Line would extend another 6.8 miles to the west, to the city of Lodi, where Pg. And E would build the new Thurman switching station.

62

00:10:39.320 --> 00:10:44.490

Heather Blair, Ascent: and those are are the main project components that are proposed by Pg and E,

63

00:10:44.610 --> 00:10:45.980

Heather Blair, Ascent: next slide.

64

00:10:48.200 --> 00:10:59.630

Heather Blair, Ascent: So the the typical hole design that would be used for the proposed 230 kb, transmission line would be these, these tubular steel poles shown here

65

00:11:01.140 --> 00:11:02.130

Heather Blair, Ascent: next slide.

66

00:11:04.110 --> 00:11:20.759

Heather Blair, Ascent: This chat. This slide shows the proposed Pg. And E. Lockford substation expansion. The existing Lockford substation would be expanded to the east, all on Pg. And E owned property to accommodate the new lines

67

00:11:21.980 --> 00:11:23.020

Heather Blair, Ascent: next slide.

68

00:11:24.900 --> 00:11:36.039

Heather Blair, Ascent: And now for the Lu project components that are proposed, and these are the project proponents that would be constructed and operated by Lodi Electric or Leu.

69

00:11:36.220 --> 00:11:57.680

Heather Blair, Ascent: They include, the new 2 30 Kv. Guild substation, which is intended to be where the Pg. And E. 2, 30 kb. Lines terminate, and then the power is stepped down from 2 30 kv. To a lower voltage, which is 60 kb. To service. Laus customers

70

00:11:58.060 --> 00:12:09.339

Heather Blair, Ascent: and Leu would also reconfigure their 60 KB. Lines between the Guild and industrial substations, and relocate a couple existing 12 KB lines

71

00:12:10.340 --> 00:12:11.480

Heather Blair, Ascent: next slide.

72

00:12:13.330 --> 00:12:24.809

Heather Blair, Ascent: This slide shows the the proposed Leu project components that are occurring within the city of Lodi. Also some Pg and E project components are occurring there.

73

00:12:25.510 --> 00:12:37.140

Heather Blair, Ascent: but the area within within which this would occur is shown. Here, at the city of Lodi the building with the the big white roof is Pacific Coast producers

74

00:12:37.340 --> 00:13:05.309

Heather Blair, Ascent: so moving west to east. Now, on this figure the existing Lu industrial substation is located adjacent to the the proposed Leu Guild State substation, and adjacent to that would be Pg. And E's, proposed Thurman switching station. And this is all on property that is owned by Leu, and some of which might be

75

00:13:05.520 --> 00:13:19.240

Heather Blair, Ascent: transfer to Pg. And E, the 60 Kv. Line configurations and the 12 Kv line relocation would all happen in relative relatively short segments surrounding these facilities.

76

00:13:20.900 --> 00:13:22.169

Heather Blair, Ascent: Next slide, please.

77

00:13:23.610 --> 00:13:30.900

Heather Blair, Ascent: Now we'll go into an overview of sequa and the planned environmental review process next slide.

78

00:13:33.550 --> 00:13:42.679

Heather Blair, Ascent: So, as I explained earlier, the CPU C and Leu, as public agencies with a discretionary action must comply with sequel.

79

00:13:42.980 --> 00:13:55.859

Heather Blair, Ascent: and the basic purposes of sequa are for information disclosure, that is, to inform decision makers and the public about any potentially significant environmental effects of a proposed project

80

00:13:56.200 --> 00:14:06.590

Heather Blair, Ascent: also impact reduction. That is to identify mitigation measures and alternatives that could avoid or lessen any significant impacts

81

00:14:07.000 --> 00:14:16.159

Heather Blair, Ascent: and importantly, public participation, to allow for meaningful opportunities for the public to participate and to comment.

82

00:14:16.510 --> 00:14:24.460

Heather Blair, Ascent: And the sequa document that we are preparing for this project is an environmental impact report or Eir

83

00:14:25.200 --> 00:14:26.489

Heather Blair, Ascent: next slide, please.

84

00:14:28.330 --> 00:14:32.480

Heather Blair, Ascent: The shown on this slide is a flow chart with the SQL. Process.

85

00:14:32.550 --> 00:14:53.439

Heather Blair, Ascent: and so it it begins with Pg. And E's submittal of an application for a certificate of public convenience and necessity, or Cpcn. And as I mentioned, that, but included in the application as a proponents, environmental assessment, or a pea that was prepared with Leu.

86

00:14:53.550 --> 00:14:59.050

Heather Blair, Ascent: and after the the CPU. C. Deemed the application to be complete.

87

00:14:59.170 --> 00:15:20.650

Heather Blair, Ascent: that triggers the start of the sequel process, which begins with a notice of preparation and a 30 day public comment period to gather information from the public on the scope and content of what the environmental impact report should analyze. And so that's where we're now. We are now at the public meeting. During the scoping process.

88

00:15:20.870 --> 00:15:28.889

Heather Blair, Ascent: at the conclusion of the scoping period we will be preparing a scoping report with all of the comments received.

89

00:15:28.900 --> 00:15:38.480

Heather Blair, Ascent: and we will be providing that on the website we'll be embarking on preparation of the draft, Eir, gathering all the input. That we have received from commenters.

90

00:15:38.530 --> 00:15:56.500

Heather Blair, Ascent: and when the draft Eir is finished we will be providing a notice of availability of the draft eir to the public. So if you receive a notice of preparation, you'll be receiving a notice of availability, letting you know that the draft Eir is ready for your review.

91

00:15:56.690 --> 00:16:07.790

Heather Blair, Ascent: and that also begins a 45 day public review and comment period on the draft Eir, during which there will be public meetings again, where we'll be looking for your input.

92

00:16:08.360 --> 00:16:17.129

Heather Blair, Ascent: Now, what's different between the Nop and the draft Eir public review is that we will be responding to comments on the draft, Eir

93

00:16:17.270 --> 00:16:24.930

Heather Blair, Ascent: and we will take those comments, prepare responses and include those responses to comments in the final er

94

00:16:25.070 --> 00:16:32.729

Heather Blair, Ascent: and the whole document. The draft and final er will be considered by decision makers.

95

00:16:32.890 --> 00:16:40.969

Heather Blair, Ascent: and once a decision is made, a notice of determination will be issued by by the agencies

96

00:16:42.130 --> 00:16:43.530

Heather Blair, Ascent: next slide. Please

97

00:16:46.090 --> 00:16:56.800

Heather Blair, Ascent: alright. So now we'll go into the er scope and schedule. We'll talk some more specifics about the secret process as it pertains to to this project. Next slide

98

00:16:59.190 --> 00:17:06.649

Heather Blair, Ascent: listed on this slide are the 19 environmental resource areas that are considered under sequ.

99

00:17:06.700 --> 00:17:25.039

Heather Blair, Ascent: So, for example, the Eir will be considering impacts to agriculture to aesthetics, hydrology, and water quality, and more. And we welcome your comments on any anticipated physical effects of the proposed project on any of these resource areas

100

00:17:26.010 --> 00:17:27.109

Heather Blair, Ascent: next slide.

101

00:17:30.380 --> 00:17:32.140

Heather Blair, Ascent: So

102

00:17:32.470 --> 00:17:39.829

Heather Blair, Ascent: the environmental analysis essentially encompasses the setting, the threshold of significance.

103

00:17:39.850 --> 00:17:42.749

Heather Blair, Ascent: identification of impacts and mitigation.

104

00:17:42.850 --> 00:17:50.879

Heather Blair, Ascent: And that sort of 3 structure. Those those 3 elements are included for each

105

00:17:51.010 --> 00:18:09.349

Heather Blair, Ascent: resource area. So every resource area will include explanation of the existing setting, which is the environmental setting and the regulatory setting. It will include identification of the threshold of significance. So you know, how will we be defining a significant impact? In the analysis.

106

00:18:09.560 --> 00:18:22.649

Heather Blair, Ascent: and then the analysis itself. You know, what are the project impacts? What are the mitigation measures? And then, after those mitigation measures are applied, you know what is the

107

00:18:22.790 --> 00:18:28.209

Heather Blair, Ascent: the remaining significance after mitigation? Or how does the mitigation reduce that impact?

108

00:18:28.630 --> 00:18:40.500

Heather Blair, Ascent: There will also be an analysis of cumulative impacts for each resource area. So how related projects contribute to the impacts of this project on that resource

109

00:18:40.610 --> 00:18:46.390

Heather Blair, Ascent: and importantly, alternatives. Analysis next slide, please.

110

00:18:48.740 --> 00:18:56.600

Heather Blair, Ascent: So the identification and analysis of alternatives to the proposed project are an essential element of the Eir

111

00:18:56.620 --> 00:19:16.899

Heather Blair, Ascent: and based on feedback we've already received, and we know that they're of interest to the public. They're of interest to you all. So we'd like to explain a little bit more about alternatives to hopefully help inform your comments and help you make suggestions about alternatives that can then be considered in the Eir.

112

00:19:17.420 --> 00:19:26.250

Heather Blair, Ascent: The sequel requirements for alternatives are those that avoid or substantially lessen the significant effects of the project.

113

00:19:26.650 --> 00:19:31.510

Heather Blair, Ascent: those that are legally, technically and regulatorially feasible

114

00:19:31.560 --> 00:19:44.849

Heather Blair, Ascent: and those that meet most basic project objectives. So the basic project objective is again, you know, we're less addressing the reliability and capacity issues on the local grid

115

00:19:45.270 --> 00:19:46.630

Heather Blair, Ascent: next slide, please.

116

00:19:48.290 --> 00:19:51.940

Heather Blair, Ascent: So how are the alternatives identified

117

00:19:52.400 --> 00:20:00.639

Heather Blair, Ascent: so they could be identified by you. As part of the the public and the agencies and organizations that comment on the Nop

118

00:20:00.900 --> 00:20:09.230

Heather Blair, Ascent: several alternatives have been identified by Pg. And E and Leu in their proponents, environmental assessment.

119

00:20:09.260 --> 00:20:16.050

Heather Blair, Ascent: and these will be objectively considered by the CPU C in in preparation of the Eir.

120

00:20:16.750 --> 00:20:32.210

Heather Blair, Ascent: and also as part of the Eir preparation process. The CPU C sequ. Team will identify alternatives. And so what what types of alternatives might those be? They could be different routes for the transmission line.

121

00:20:32.280 --> 00:20:44.389

Heather Blair, Ascent: They could be different locations for infrastructure. They could potentially be other technologies, such as undergrounding portions of

122

00:20:44.510 --> 00:20:48.319

Heather Blair, Ascent: proposed overhead lines. Or maybe there's others.

123

00:20:49.080 --> 00:21:03.000

Heather Blair, Ascent: and also, as required by sequa, the no project alternative will be evaluated in the Eir, and that alternative looks at any environmental effects of not implementing the project

124

00:21:04.320 --> 00:21:05.660

Heather Blair, Ascent: next slide, please.

125

00:21:07.450 --> 00:21:20.440

Heather Blair, Ascent: Here's the schedule. For this eir. So we are in the the notice of preparation review period and scoping period that ends on February ninth.

126

00:21:20.460 --> 00:21:28.650

Heather Blair, Ascent: Then we'll be preparing the the draft Eir, which is expected to be released this summer, or potentially into the fall of this year

127

00:21:28.720 --> 00:21:40.590

Heather Blair, Ascent: the final er is expected to be released at the end of this year, potentially early and 2,025, with the CPU. C. Decision expected next year.

128

00:21:41.620 --> 00:21:42.990

Heather Blair, Ascent: Okay, next slide.

129

00:21:44.900 --> 00:21:53.919

Heather Blair, Ascent: So now, to what is the most important part of the meeting which is providing comments on the scope of the Eir. Next.

130

00:21:55.390 --> 00:22:05.309

Heather Blair, Ascent: we'd like to offer some tips on providing useful comments. To hopefully help you all inform the scope and comment content of the Eir.

131

00:22:05.750 --> 00:22:16.710

Heather Blair, Ascent: So, for example, your comment could provide information on resources that are potentially present and ways that those resources could be impacted by the project.

132

00:22:16.840 --> 00:22:34.210

Heather Blair, Ascent: You could, you could provide ideas for feasible mitigation measures, suggestions for alternatives to the project that could reduce or avoid potentially significant impacts. Or you could identify the public agencies and

133

00:22:34.250 --> 00:22:46.529

Heather Blair, Ascent: organizations, groups and individuals that should be noticed for this project if they're not already on our list. So please include those names, and we could provide them with information.

134

00:22:46.760 --> 00:22:56.689

Heather Blair, Ascent: We understand that there is a lot of interest. And you know where the project is relative to specific properties.

135

00:22:57.070 --> 00:23:14.299

Heather Blair, Ascent: We don't have that type of detailed information at our fingertips to convey to you during this meeting, like, where is this poll in relation to my driveway. But we recognize that knowing this information will be

important for you to develop your comments.

136

00:23:14.490 --> 00:23:26.030

Heather Blair, Ascent: So we, if you want to send your property information via email with a specific questions, we'll get back to you in a timely member timely manner, so that you could develop those those comments.

137

00:23:27.140 --> 00:23:31.349

Heather Blair, Ascent: So now I'll turn it over to our meeting facilitator, Louise.

138

00:23:34.780 --> 00:23:44.229

Luis Montes, Ascent (he/him): Hi, everyone! My name is Luis Montes. I'm with ascent, and I'll be facilitating the scoping comment portion of today's meeting.

139

00:23:44.510 --> 00:23:59.130

Luis Montes, Ascent (he/him): Please note, only verbal comments will be accepted either via zoom or phone. We ask that you limit your verbal comments today to 3 min or less, and limit it to one comment per speaker.

140

00:23:59.540 --> 00:24:10.400

Luis Montes, Ascent (he/him): we will put a timer on the screen so that you're able to see how much time you have left to speak. Use the chat for technical issues and clarifying questions only

141

00:24:10.630 --> 00:24:12.700

Luis Montes, Ascent (he/him): please no comments.

142

00:24:15.590 --> 00:24:25.309

Luis Montes, Ascent (he/him): Please note that we will not be providing responses to comments received during the scoping meeting, including at this meeting.

143

00:24:25.620 --> 00:24:36.790

Luis Montes, Ascent (he/him): Instead, this public review process is intended for the CPU. C. To hear your comments on the scope of what the draft yeah, Eir should be addressing

144

00:24:37.070 --> 00:24:43.410

Luis Montes, Ascent (he/him): when the draft er when the draft Eir is released to the public later this year

145

00:24:43.460 --> 00:24:51.509

Luis Montes, Ascent (he/him): the CPU C. Will be taking public comments on that document and will respond to comments in the final er

146

00:24:52.560 --> 00:24:56.900

Luis Montes, Ascent (he/him): today. And throughout this 30 day scoping period

147

00:24:56.930 --> 00:25:09.309

Luis Montes, Ascent (he/him): we would like to gather information from you. Therefore we will not be responding to these comments. If you have clarifying questions, we encourage you to submit them in writing

148

00:25:09.930 --> 00:25:19.190

Luis Montes, Ascent (he/him): the CPU C and ascent are, are reviewing written comments as they are received via email and mail.

149

00:25:19.610 --> 00:25:26.789

Luis Montes, Ascent (he/him): If there is a written question for which an answer would allow the person to develop a comment on the project.

150

00:25:27.190 --> 00:25:42.759

Luis Montes, Ascent (he/him): We will provide the request that we will provide the requested information in a timely manner. We likely won't be responding to questions received verbally at today's meeting, because we are in the initial stages of information gathering.

151

00:25:42.820 --> 00:25:49.270

Luis Montes, Ascent (he/him): and we'll be able to provide a more thoughtful response with helpful information. If it is in writing.

152

00:25:54.470 --> 00:25:57.490

Luis Montes, Ascent (he/him): if you're using zoom on your computer.

153

00:25:57.500 --> 00:26:07.950

Luis Montes, Ascent (he/him): mobile or smart device, please go ahead and look for the raised hand button at the bottom of the screen to let us know that you'd like to speak

154

00:26:08.820 --> 00:26:16.509

Luis Montes, Ascent (he/him): when it. When it is your turn to speak, you will hear your name called, and will receive a notification stating

155

00:26:16.760 --> 00:26:20.510

Luis Montes, Ascent (he/him): the host would like you to unmute your microphone

156

00:26:21.600 --> 00:26:32.769

Luis Montes, Ascent (he/him): from there. Select, unmute myself. and at that point you will be able to begin speaking. Once you're done with your comments you will lower your hand and go back on mute.

157

00:26:36.400 --> 00:26:38.790

Luis Montes, Ascent (he/him): If you are calling in by phone.

158

00:26:39.100 --> 00:26:44.360

Luis Montes, Ascent (he/him): Go ahead and press Star 9 to indicate that you would like to speak

159

00:26:44.750 --> 00:26:55.830

Luis Montes, Ascent (he/him): and please listen for the message. The host would like you to unmute your microphone. From there you can press Star 6 to unmute.

160

00:26:56.410 --> 00:27:02.410

Luis Montes, Ascent (he/him): and when you're done with your comment, please remember to press Star 6 again, to remute.

161

00:27:06.840 --> 00:27:15.159

Luis Montes, Ascent (he/him): If you are interested in providing written comments, you can do so by mail at the address shown on the screen.

162

00:27:15.260 --> 00:27:18.539

Luis Montes, Ascent (he/him): or by emailing NS.

163

00:27:18.550 --> 00:27:19.650

Luis Montes, Ascent (he/him): G.

164

00:27:19.690 --> 00:27:21.429

Luis Montes, Ascent (he/him): TP.

165

00:27:21.790 --> 00:27:32.740

Luis Montes, Ascent (he/him): Add a cent dot. INC. Please note the scoping comment.

Period closes on February ninth. 2024.

166

00:27:37.800 --> 00:27:42.410

Luis Montes, Ascent (he/him): Once again we ask you, keep your comments to 3 min or less

167

00:27:42.690 --> 00:27:56.660

Luis Montes, Ascent (he/him): and limit it to one comment per speaker. we will go ahead and put a timer on the screen, so you can see how much time you have left to speak. Speakers will be called in the order of their raised hands.

168

00:27:57.260 --> 00:28:04.559

Luis Montes, Ascent (he/him): Remember, this is a shared space for all, and we ask that you please be respectful of your peers and the presenters.

169

00:28:05.440 --> 00:28:09.760

Luis Montes, Ascent (he/him): With that we will go ahead and start accepting verbal comments.

170

00:28:13.230 --> 00:28:21.940

Luis Montes, Ascent (he/him): All right. please make sure if you want to speak or provide comments that you use the raise hand function.

171

00:28:22.710 --> 00:28:26.710

Luis Montes, Ascent (he/him): It looks like we have Jim Grady

172

00:28:26.840 --> 00:28:36.260

Luis Montes, Ascent (he/him): up first, and then after Jim is Joe Peterson. Jim Grady. you may unmute yourself.

173

00:28:39.530 --> 00:28:41.659

Hello! Can you hear me?

174

00:28:42.110 --> 00:28:43.300

Luis Montes, Ascent (he/him): We can hear you.

175

00:28:43.640 --> 00:28:54.710

jim grady: My name is Jim Grady. I own 46 acres of grape vineyard, located at 1405, one North Highway, 88. I became aware of the project in a letter sent from Pg. And E.

176

00:28:54.900 --> 00:29:10.090

jim grady: My son and I farm the 46 acres of wine grapes on highway 88. There are several ways. Our farming will be impacted when we have late spring rains, the clay soil we farm does not dry out, and there are years when we need to have sulfur dust fly flown in

177

00:29:10.130 --> 00:29:26.230

jim grady: by crop duster in order to mitigate mildew and mold. That will probably not be possible. Once these power lines are are developed on our property. the proposed route bisects our vineyard, and will make aerial application of sulfur impossible.

178

00:29:26.820 --> 00:29:35.080

jim grady: At the very least, I would ask that the route be passed to the north or the south border of our vineyards. or preferably be underground.

179

00:29:35.420 --> 00:29:52.400

jim grady: My son purchased a home and put it on the property adjacent to our metal shop. The proposed placement of the power line would be approximately 60 feet in front of my son's homes. This will essentially make his home worthless, as there will be no market for a home 60 feet from a high voltage power line

180

00:29:54.400 --> 00:30:01.520

jim grady: project, will also dramatically devalue our vineyard's property value, based on the aesthetics as well as the constant noise from the power lines.

181

00:30:01.660 --> 00:30:07.619

jim grady: I doubt Pg. And E. Will provide compensation for the dramatic decrease in the property value

182

00:30:07.640 --> 00:30:20.730

jim grady: for all of the affected land owners. My suggestion to resolve the conflicts would be either to construct a power line underground down Kettleman Lane or Harney Lane, where it will have no impact or aesthetics on property values or farming

183

00:30:21.100 --> 00:30:23.430

jim grady: policies.

184

00:30:24.150 --> 00:30:38.419

jim grady: or follow an existing power line pathway or rail line right away to avoid impacting homeowners. Clearly the construction of an above ground. High voltage power line will adversely impact any existing winery owners as it passes.

185

00:30:38.500 --> 00:30:43.680

jim grady: and essentially prevent any vineyard owners in its path from developing a winery on their property.

186

00:30:44.180 --> 00:30:54.419

jim grady: though it would be more expensive to me to require Pg. To underground. This power line, preferably along an existing roadway, would probably be the right solution to the problem.

187

00:30:55.960 --> 00:30:57.530

Thank you for your time.

188

00:31:00.320 --> 00:31:03.519

Luis Montes, Ascent (he/him): Thank you, Jim. You now re-mute yourself

189

00:31:05.880 --> 00:31:10.760

Luis Montes, Ascent (he/him): up next we have Joe Peterson. You may now go off mute.

190

00:31:14.840 --> 00:31:17.019

joe petersen: Peterson, can you hear me? Okay.

191

00:31:17.510 --> 00:31:18.690

Luis Montes, Ascent (he/him): yes, we can hear you.

192

00:31:18.910 --> 00:31:34.839

joe petersen: I'm I'm responding in re, in response to partial number 0 6, 3 0 7, 0 dash 6 1. And I'd like to just reiterate, I have the same problem as Mr. Great, Dr. Grady. Excuse me, has.

193

00:31:34.970 --> 00:31:46.109

joe petersen: And I simply, I'm gonna have obviously value problems. But as well as farming problems. And I've I've looked at the project. I understand the project needs to be done. But

194

00:31:46.450 --> 00:31:53.640

joe petersen: you could greatly reduce the impact to the local vineyards by simply

moving it to my South property line

195

00:31:53.680 --> 00:32:06.780

joe petersen: or moving it to the north property line. Your your angles are going to be very similar, and will just have a lot less. It goes right down the middle of my property line as well as a neighbour, Mr. Jenners, to the to the north of me, to sorry to the east of me.

196

00:32:06.970 --> 00:32:15.529

joe petersen: and if you simply made your angle a little bit shorter, or your angle a little bit smaller, you'd have a much less impact on the vineyard parcels

197

00:32:15.620 --> 00:32:22.429

joe petersen: again. I don't care to go to the north or the south of my parcel. I understand it's the least obtrusive route, but that's what I would prefer.

198

00:32:22.590 --> 00:32:27.860

joe petersen: Secondly, I really don't understand the the whole logic of this is what I've been told

199

00:32:27.950 --> 00:32:34.890

joe petersen: that this is to protect and provide for multiple

200

00:32:35.450 --> 00:32:40.360

joe petersen: sources of electricity or multiple paths. Redundancy, I think, was the word used.

201

00:32:40.970 --> 00:32:59.539

joe petersen: Why would you create one more, Major? Pipe? Mo, one more power line. Why would you not just increase the existing 4 or 5 power lines that are there increase the size of those a little bit, not really changing the impact that's already there. And II personally think that would be the highest redundancy

202

00:32:59.580 --> 00:33:00.700

joe petersen: available.

203

00:33:00.790 --> 00:33:03.740

joe petersen: And that concludes my, my.

204

00:33:04.600 --> 00:33:06.500

joe petersen: my comments.

205

00:33:09.370 --> 00:33:13.510

joe petersen: Thank you, Joe, for your comments. You may now look at me myself. Absolutely.

206

00:33:13.550 --> 00:33:18.179

joe petersen: Let me just repeat, it's Joe Peterson and the Apr. Is it? 0 6, 3,

207

00:33:18.260 --> 00:33:21.420

joe petersen: 0 7, 0 6 1.

208

00:33:21.840 --> 00:33:22.790

joe petersen: Thank you.

209

00:33:23.300 --> 00:33:24.550

Luis Montes, Ascent (he/him): Awesome. Thank you, Joe.

210

00:33:30.560 --> 00:33:55.700

Luis Montes, Ascent (he/him): It looks like we only had 2 hands. Just a reminder. If you would like to comment and submit. If you would like to submit a verbal comment, we do need you to use the raised hand function in zoom. If you are calling by phone to do so, please press Star 9 to indicate that you would like to speak.

211

00:34:06.470 --> 00:34:11.299

Luis Montes, Ascent (he/him): It appears that those were our only comments, and there are no further. Oh.

212

00:34:12.560 --> 00:34:16.659

Luis Montes, Ascent (he/him): we have. Dwight up next.

213

00:34:21.100 --> 00:34:25.359

Luis Montes, Ascent (he/him): Dwight. Yeah, you may unmute yourself and share your comments.

214

00:34:25.830 --> 00:34:33.359

Dwight Busalacchi: Yes, good afternoon. My name is Dwight Boozi, my wife and I own a 20 acre parcel of land located at

215

00:34:33.489 --> 00:34:41.890

Dwight Busalacchi: 15, 4, 67 East Kelvin Lane and Lodite. Currently, we do have a lattice tower running to our property. We have one tower on our property.

216

00:34:42.429 --> 00:34:51.530

Dwight Busalacchi: I was made aware of this project in mid October of 2023, when I received a letter from Pg. Regarding this project. Up to that point. I had no clue that this was going to happen.

217

00:34:52.250 --> 00:35:06.549

Dwight Busalacchi: Our property is 20 acres, an area located special soils area past John and Sam Joaquin. Yeah. Gis server. we grow small blocks of rare grape clones to specially wineries throughout the State of California.

218

00:35:07.120 --> 00:35:14.239

Dwight Busalacchi: The prop, the proposed construction of the new tar adjacent to the existing last tar will affect our vineyard in the following ways.

219

00:35:14.330 --> 00:35:20.420

Dwight Busalacchi: We will lose about \$6,000 of yearly income from the grapes that have to be needed to be removed.

220

00:35:20.730 --> 00:35:31.800

Dwight Busalacchi: I sent documents regarding all this to your website or to your email that you shown the Sj. Tp. And is sent on Incorporated

221

00:35:32.170 --> 00:35:35.960

Dwight Busalacchi: and we do have a rare clone of

222

00:35:36.000 --> 00:35:48.120

Dwight Busalacchi: cabernet that will be affected drastically. It's only a nine-tenths of an acre block of it. This clone was destroyed by Uc. David's because of leave. Roll 3 virus.

223

00:35:48.200 --> 00:35:49.620

Dwight Busalacchi: and when we

224

00:35:49.910 --> 00:35:58.389

Dwight Busalacchi: we analyze the grapes. We noticed that one of the blinds did have it right dead center and the and the powerful with the no location new power pole.

225

00:35:58.470 --> 00:36:03.510

Dwight Busalacchi: And now we're watching this because it's been 4 years that the line hasn't shown no

226

00:36:03.750 --> 00:36:12.149

Dwight Busalacchi: issues. And now they're wondering if this buying is a new genetic code to disease. Resistant binds.

227

00:36:12.450 --> 00:36:22.209

Dwight Busalacchi: The northerly conductors of the proposed 230,000 goal line are just 21 feet away from our well, our wells 426 feet deep.

228

00:36:22.370 --> 00:36:31.279

Dwight Busalacchi: and I got some estimates that it would cost about a hundred \$60,000 to relocate the well, and probably another \$50,000 to abandon it.

229

00:36:31.320 --> 00:36:39.790

Dwight Busalacchi: along with all our infrastructure, underground pipelines and everything else to that area. We're looking close to half a million dollars worth of work.

230

00:36:39.890 --> 00:36:46.079

Dwight Busalacchi: It's very complex. We monitor thing wirelessly throughout our vineyard, even though it's a small vineyard.

231

00:36:46.090 --> 00:37:04.160

Dwight Busalacchi: And so this will propose the line will have a terrace effect. Now I did. The right. Below the line is a double conductor or double circuit, but has 2 conductors, will have 2 conductors per phase. I can't see why they can't do that to our our line.

232

00:37:04.210 --> 00:37:11.140

Dwight Busalacchi: Just have 2 conductors per phase instead of single conductor per phase. That's my comments. Thank you very much for listening to me.

233

00:37:13.970 --> 00:37:15.670

Luis Montes, Ascent (he/him): Thank you so much for your comments.

234

00:37:17.100 --> 00:37:21.550

Luis Montes, Ascent (he/him): You can now, return remote yourself. Thank you.

235

00:37:25.770 --> 00:37:40.430

Luis Montes, Ascent (he/him): Just a reminder to use the raise hand function on on zoom to to make a comment. Or if you're on the if you're using a phone to select Star 9 to indicate that you would like to speak.

236

00:37:41.550 --> 00:37:47.260

Luis Montes, Ascent (he/him): Up next we have Joe Cataldo! Joe, you may unmute this yourself.

237

00:37:48.610 --> 00:37:50.410

Joe Cataldo: Hello! Can everybody hear me.

238

00:37:51.390 --> 00:37:52.530

Luis Montes, Ascent (he/him): Yes, we can hear you.

239

00:37:53.390 --> 00:38:07.340

Joe Cataldo: Well, my name is Joe Cataldo. I do not have my 2 Apr. Numbers on me, but I am at 1, 4, 5, 3, 7 Alpine road, just actually Kitty Corner to Joe Peterson, who spoke earlier. He's my neighbor.

240

00:38:07.350 --> 00:38:23.629

Joe Cataldo: The proposed project will go along my south perimeter of my property and on my west side of my property. So it dog legs. I'm getting 2 sides of 2 perimeters of my property affected. I have a 73 acre.

241

00:38:23.710 --> 00:38:50.649

Joe Cataldo: and it looks with, you know, based on everything I've looked at. That, you guys or Pg is provided for the proposal. It looks like I'll have about 6 to 7 acres worth of ground that will have to be taken by Pg. And E. With the the 5 posts or 6 posts, I believe, that are proposed on my property, and also the the road

242

00:38:50.930 --> 00:39:06.700

Joe Cataldo: in the area generation grower. But this is a first generation business, and I have debt on this property, and the value of this property will definitely be affected by this product, and

243

00:39:07.080 --> 00:39:10.539

Joe Cataldo: that will put a big financial hardship.

244

00:39:11.800 --> 00:39:13.779

Joe Cataldo: Yep, all my

245

00:39:14.440 --> 00:39:39.909

Joe Cataldo: you know. 55 to 62 year old binds in that's gonna be certified organic next year. You know, in terms of farming and cultural practices in our cherries, to have posts right in the middle of our cherries and access roads everywhere. Just basic farming cultural practices is gonna create a huge hardship on our business. We're we're already struggling as farmers as it is.

246

00:39:39.910 --> 00:40:00.360

Joe Cataldo: And I'm very grateful to have Pg. And have power so we can run our pumps and have power for homes. But this just seems like everybody else has said, there are so many better avenues and better routes it could be could happen here. My other worry is, you know, the compensation for this for this prop?

247

00:40:02.360 --> 00:40:14.930

Joe Cataldo: Are we gonna be forced with eminent domain? Is there going to be actual fair market value for access to our property be compensated for loss of crops and revenue. So there's just so much wrong, in my opinion.

248

00:40:15.300 --> 00:40:30.049

Joe Cataldo: With the way this was all handled with the way it was laid out. And you know, we're just II have a lot of answers, and I or questions that they need answers to. So I wanna thank you for your time, and I thank everybody for their involvement in this. In this effort.

249

00:40:47.000 --> 00:40:50.240

Heather Blair, Ascent: Louise, I don't think your audio is is coming through.

250

00:41:04.570 --> 00:41:06.519

Heather Blair, Ascent: It appears that you're muted.

251

00:41:13.250 --> 00:41:15.229

Heather Blair, Ascent: Bear with us everyone

252

00:41:15.240 --> 00:41:16.910

Heather Blair, Ascent: technical difficulties.

253

00:41:27.790 --> 00:41:36.320

Heather Blair, Ascent: Luis. If you're able to put the names of any speakers in the

chat or Tracy, maybe you can assist.

254

00:41:36.640 --> 00:41:37.450

Tracy Prybyla, Ascent: Yeah.

255

00:41:41.550 --> 00:41:48.369

Tracy Prybyla, Ascent: So we just heard from Joe, I believe, Joe Cataldo, that's right.

256

00:41:48.530 --> 00:41:52.070

Tracy Prybyla, Ascent: If there is anybody else who wants to

257

00:41:52.190 --> 00:42:01.119

Tracy Prybyla, Ascent: leave a comment, you can go ahead and raise your hand in zoom. Or if you're via phone, you can go ahead and press Star 9 to indicate that you would like to speak

258

00:42:07.840 --> 00:42:09.790

cool. Okay.

259

00:42:10.040 --> 00:42:12.390

Tracy Prybyla, Ascent: it does look like

260

00:42:13.130 --> 00:42:16.600

Tracy Prybyla, Ascent: George Orligos would like to speak.

261

00:42:18.430 --> 00:42:22.689

Tracy Prybyla, Ascent: Are you able to unmute him? Louise

262

00:42:34.260 --> 00:42:41.720

Heather Blair, Ascent: looks like Louise is reconnecting. He has the power to mute and unmute commenters. So please please bear with us just

263

00:42:41.830 --> 00:42:42.880

Heather Blair, Ascent: a minute.

264

00:42:50.610 --> 00:42:54.719

Heather Blair, Ascent: There are certainly benefits and drawbacks of these virtual meetings.

265

00:42:58.350 --> 00:43:07.079

Tracy Prybyla, Ascent: and just remember, if you have any property specific questions. You can always email us at NSJT. P. At ascent. Inc.

266

00:43:54.210 --> 00:44:06.689

Tracy Prybyla, Ascent: Thank you so much for your patience. Everyone we're trying to transfer hosting capabilities from Louise to someone else. Yes, and I was just able to do that. So, George.

267

00:44:07.120 --> 00:44:12.660

Tracy Prybyla, Ascent: it does look like you should be able to unmute yourself at this point. Are you able to do so.

268

00:44:21.920 --> 00:44:24.960

Tracy Prybyla, Ascent: George? Are you able to unmute yourself and speak?

269

00:44:30.670 --> 00:44:33.110

Heather Blair, Ascent: Would that be on the bottom of his screen.

270

00:44:33.440 --> 00:44:34.240

Tracy Prybyla, Ascent: Hmm.

271

00:44:47.120 --> 00:44:51.260

Tracy Prybyla, Ascent: George, so you should have permission to unmute yourself and speak. Now.

272

00:44:55.860 --> 00:45:05.790

Tracy Prybyla, Ascent: If you have any property specific questions, you can email them to NSJT. p@ascent.inc.

273

00:45:10.840 --> 00:45:13.099

Heather Blair, Ascent: Tracy, are you able to give

274

00:45:13.230 --> 00:45:31.659

Tracy Prybyla, Ascent: the comment or specific instructions on how to unmute himself. Is it the typically the lower left of the screen? Yeah, it should be a pop-up box that shows up on your screen. The host would like you to unmute yourself, and then you press, unmute myself.

275

00:45:37.980 --> 00:45:47.349

Tracy Prybyla, Ascent: If there's anybody else who would like to comment, please just go ahead, raise your hand and zoom, and we can always come back to George when his audio is working.

276

00:45:49.920 --> 00:45:51.220

Luis Montes: Okay, Hi, everyone.

277

00:45:54.620 --> 00:45:55.600

Luis Montes: Are we okay?

278

00:45:56.110 --> 00:46:02.369

Tracy Prybyla, Ascent: Am I back? I don't know what happened? Apologies. Everyone.

279

00:46:02.670 --> 00:46:05.900

Tracy Prybyla, Ascent: We have.

280

00:46:06.250 --> 00:46:12.190

Tracy Prybyla, Ascent: George, who was trying to leave a comment, but he appears to be frozen.

281

00:46:13.840 --> 00:46:17.700

Luis Montes: alright! We will work this out 1 s.

282

00:46:25.250 --> 00:46:27.450

Tracy Prybyla, Ascent: George, are you able to unmute yourself? Now?

283

00:46:43.440 --> 00:46:44.210

George Perlegos: Okay.

284

00:46:44.350 --> 00:46:52.249

Heather Blair, Ascent: yeah. Okay. George.

285

00:46:52.610 --> 00:46:56.320

George Perlegos: And we have submitted a letter

286

00:46:56.350 --> 00:47:04.169

George Perlegos: stating our objections to this power lines come in in this part of

Lodi.

287

00:47:04.610 --> 00:47:19.460

George Perlegos: and we have a number of properties along Curry Road. The property now that's affected is as the power lines cross the curry road area, and they go up towards Katamal Lane.

288

00:47:20.440 --> 00:47:32.060

George Perlegos: We grow grapes in this area. We, my parents, have this property for forever 40 years, 50 years. and

289

00:47:32.290 --> 00:47:42.339

George Perlegos: we like to keep it this way. We continue with grapes. The lot of people are putting up wine eddies in this area

290

00:47:42.500 --> 00:47:57.830

George Perlegos: and this kind of power lines, they take up a lot of space. I don't know how much space the Usman's would take. and this particular power line as it goes. I think it's gonna come very close to our pump.

291

00:47:58.300 --> 00:48:11.969

George Perlegos: But other, aside from that, is not a very good day, very good area to pass power lines. This is not this is a vinyl area

292

00:48:12.090 --> 00:48:19.479

George Perlegos: they have wineries there. They have cherry trees all the property owners. So

293

00:48:19.810 --> 00:48:22.030

George Perlegos: we propose that

294

00:48:22.040 --> 00:48:30.639

George Perlegos: they find some other alternative we have proposing the letter that they go underground, or they stay in existing

295

00:48:30.930 --> 00:48:46.599

George Perlegos: power route that they presently have on Victor Road, or and try to work it out so that they add the additional power that they need. I don't think we're opposed to what power they need is just that

296

00:48:46.690 --> 00:48:50.909

George Perlegos: they they cannot. They should not.

297

00:48:50.960 --> 00:49:03.690

George Perlegos: I guess they can do whatever they want, but they cannot come through this part of blood. I because it destroys properties that people have built over 50, 60 years. So even longer. You know.

298

00:49:03.840 --> 00:49:20.390

George Perlegos: and that's what I like to say is that somehow the up you see, the Cp. You see, is to find A on a way to keep them on the existing route

299

00:49:20.820 --> 00:49:21.940

George Perlegos: and

300

00:49:22.390 --> 00:49:29.890

George Perlegos: keep them underground. It's very difficult to bring in this part of right now.

301

00:49:33.110 --> 00:49:40.999

George Perlegos: Yes, that's the comments I have. in addition to what I have already submitted some time ago.

302

00:49:42.700 --> 00:49:43.600

George Perlegos: Okay.

303

00:49:43.770 --> 00:49:48.979

Luis Montes: thank you, George, for your comments. And again, for the the

304

00:49:49.210 --> 00:49:50.620

Luis Montes: technical issues.

305

00:49:50.820 --> 00:50:11.650

Heather Blair, Ascent: Mister Mr. Pelegos, you referenced a letter that you submitted some time ago. I presume that was to Pg. And E. If you sent a letter to Pg. And E please send it to the CPU C, and I apologize for that extra effort. But now this is part of the the environmental review process

306

00:50:11.660 --> 00:50:18.919

Heather Blair, Ascent: rather than Pg and E is a routing process. So please be sure

that if you sent a letter to Pg. And E.

307

00:50:19.030 --> 00:50:34.139

Heather Blair, Ascent: In the past that you would send your comments to the CPU C, using this information on the screen so that we can appropriately consider it in the in this environmental review process. Yes, II believe we have sent letters

308

00:50:34.240 --> 00:50:42.020

George Perlegos: and to the Poc. But we will send them again, and we will try to.

309

00:50:42.910 --> 00:51:01.830

George Perlegos: We hope that you come up with some alternative to keep them where under existing power lines, because you can use a helicopter to to bring the lines up I don't think the only comment was that it will be some downtime, and they cannot use the existing routes.

310

00:51:01.860 --> 00:51:03.360

George Perlegos: But I believe.

311

00:51:03.460 --> 00:51:08.229

George Perlegos: with all this technical expertise that can find some alternative way

312

00:51:08.500 --> 00:51:09.180

George Perlegos: to

313

00:51:09.450 --> 00:51:23.750

George Perlegos: cut in and cut out the the new lines. But I'm not 100 the expert. There are other expert people on on the call today that can bring their comments in it.

314

00:51:24.800 --> 00:51:27.939

George Perlegos: Okay, thank you. Thank you.

315

00:51:28.510 --> 00:51:33.730

George Perlegos: Essentially. It will destroy a lot of people's lives that they have

316

00:51:35.350 --> 00:51:48.410

George Perlegos: work for so long and so so hard to build up this area. And it looks it's a very nice area, the power lines which simply just aesthetics. Everything else

317

00:51:48.550 --> 00:51:54.589

George Perlegos: will not look good not only for our property, talking about everyone's property

318

00:51:54.620 --> 00:51:55.859

George Perlegos: and the whole realm.

319

00:51:57.110 --> 00:51:58.080

George Perlegos: Thank you.

320

00:51:58.600 --> 00:52:02.009

Luis Montes: Thank you, George, for your comments. You may now remove yourself.

321

00:52:09.690 --> 00:52:14.210

Luis Montes: Katie, you are up next. You may now unmute yourself.

322

00:52:15.540 --> 00:52:21.630

Katie Koeplin: Hi! My name is Katie Keplin my husband and I live just south of Kettleman Lane on Curry Avenue.

323

00:52:21.640 --> 00:52:35.940

Katie Koeplin: and we will be directly affected by the lines to the north of 2 of our properties we have 3 properties affected, but 2 of them will be directly affected. It appears that the lines will be going just to the north of us.

324

00:52:36.070 --> 00:52:38.320

Katie Koeplin: And

325

00:52:38.570 --> 00:52:44.719

Katie Koeplin: I guess there's going to be some kind of a 100 foot easement that they'll need to go back into our cherry orchard.

326

00:52:44.740 --> 00:52:52.819

Katie Koeplin: So it looks like we're gonna lose quite a bit of our cherry orchard. Possibly. Also, I guess we're within the fall zone.

327

00:52:52.870 --> 00:52:59.620

Katie Koeplin: and I'm just kinda worried about our property values. I am a real

estate appraiser. I know this does affect them greatly

328

00:52:59.700 --> 00:53:28.139

Katie Koeplin: also. Probably my biggest concern is that this doesn't really affect you so much. But Pg and E. Did not they indicated that they let everybody know about this. Years ago we were not informed of any of this happening till about 3 years ago, so we missed many of the beginning meetings that they had which affected other routes. And we were not able to have any input or go to any of those meetings cause we were not aware of them.

329

00:53:28.140 --> 00:53:35.129

Katie Koeplin: and I just wanted to know why somebody that whose property would have been directly affected

330

00:53:35.360 --> 00:53:51.159

Katie Koeplin: would not have been given a notice by registered mail or a little bit better. You know process of letting people know what's going on. I know we're not the only ones that were not informed. When we had our meeting with Pg. And E. Last month

331

00:53:51.190 --> 00:53:59.430

Katie Koeplin: over at the great festival grounds, quite a few people stood up and they had the same issues. So I just wanted you guys to know that.

332

00:53:59.530 --> 00:54:13.839

Katie Koeplin: That happened to quite a few of us. And this is a really, really big thing that's going to happen to our properties. So I think that's very strange that we were not notified about this years ago, so we could have been talking about it all along.

333

00:54:13.930 --> 00:54:16.670

Katie Koeplin: Anyway, that's all I have to say. Thank you.

334

00:54:17.590 --> 00:54:21.779

Luis Montes: Thank you, Katie. You may now lower your hand.

335

00:54:29.170 --> 00:54:30.939

Luis Montes: Are there any other comments

336

00:54:31.140 --> 00:54:37.750

Luis Montes: up up next we have David Simpson. David. You may now unmute yourself.

337

00:54:39.410 --> 00:54:45.210

David Simpson: Well, my name is David Simpson, and with me today is my wife Sandy.

338

00:54:45.320 --> 00:54:57.189

David Simpson: who will probably do most of the comments. However, I'd like to say, I totally agree with what Dr. Grady said earlier.

339

00:54:57.480 --> 00:55:11.929

David Simpson: we have a property on Vintage road about 28 acres of wine grapes is going to be impacted by the construction of this project, not the project itself.

340

00:55:12.410 --> 00:55:16.409

David Simpson: We have, an area designated to

341

00:55:17.080 --> 00:55:20.579

David Simpson: install the power lines, and

342

00:55:21.610 --> 00:55:36.089

David Simpson: we've received no information. What that means. So like Dr. Grady, we need to get in and do farm work. and we're going to lose the ability to do that for one year

343

00:55:36.510 --> 00:55:41.349

David Simpson: or a week or a day, or we don't know.

344

00:55:41.670 --> 00:55:48.410

David Simpson: So there's a lot of concern there. also.

345

00:55:49.180 --> 00:55:51.290

David Simpson: I've seen what happens

346

00:55:51.900 --> 00:56:01.830

David Simpson: with other crops planted under one power lines, high voltage power lines in London.

347

00:56:01.860 --> 00:56:03.320

David Simpson: Few years ago

348

00:56:04.350 --> 00:56:10.090

David Simpson: there was a case where they went in. They Pg and E went in and just pruned

349

00:56:10.120 --> 00:56:17.600

David Simpson: mature walnut trees down to about 10 foot, essentially destroying the orchard. So

350

00:56:18.340 --> 00:56:30.219

David Simpson: I think it needs to be made clear that we're not just losing our ability to grow grapes. We're losing our ability to grow other crops as well.

351

00:56:31.840 --> 00:56:35.060

David Simpson: I think the alternatives are there.

352

00:56:37.070 --> 00:56:41.300

David Simpson: We need to really reevaluate

353

00:56:41.480 --> 00:56:47.709

David Simpson: undergrounding this line or using the existing corridors

354

00:56:48.310 --> 00:56:56.649

David Simpson: to upgrade and put in the capacity. Like everyone else, has said, there's no argument

355

00:56:56.880 --> 00:57:06.350

David Simpson: that we need the power that the city of Lodi needs the power. They built a couple of small power plants in the last few years.

356

00:57:06.490 --> 00:57:31.619

David Simpson: We know we need the power. And we just need a better way to get it there. Thank you for your time. Appreciate it, Sandy. Okay, let's see, there was a gentleman at the last meeting that said he was a contractor with Pg. And E. And they took the 60 kilowatt lines and put just lines on those polls for 2 30. He did it. Another thing is,

357

00:57:32.020 --> 00:57:42.050

David Simpson: let's see the ambiance of the Lodi wine country. This isn't rangeland that you're talking about those 6.8 acres. This is total permanent crops.

358

00:57:42.100 --> 00:57:43.740

David Simpson: orchards, vineyards.

359

00:57:45.720 --> 00:57:51.020

David Simpson: so we're done. Yeah, thank you.

360

00:57:52.310 --> 00:57:57.330

Luis Montes: You can continue. Your, we'll count this as an extra comment.

361

00:57:57.360 --> 00:58:12.450

David Simpson: Anyway, there's several wineries in the area, and we get tour buses, you know, going through all the time. And if we have these high power lines going right, there's to north, south, you know, east, West, there's

362

00:58:12.450 --> 00:58:28.890

David Simpson: there's a wineries and vineyards and orchards. It's not like we're in the middle of Rangeland. I think that'll decrease property values and the audience of the whole load. I wine country that the city of Lodi, has been really trying hard, and the farmers to

363

00:58:29.680 --> 00:58:31.120

David Simpson: capitalize on.

364

00:58:31.130 --> 00:58:39.630

David Simpson: And to make this a viable destination which it is becoming more and more. Okay. Thank you. Do you have anything else?

365

00:58:40.050 --> 00:58:51.629

Luis Montes: Thank you both for your comments, you may now unmute yourself. Up. Next we have Stanley Chavez. You may unmute yourself.

366

00:59:00.440 --> 00:59:01.589

Stanley Chaves: Can you hear me?

367

00:59:01.640 --> 00:59:03.160

Luis Montes: Yep, we can hear you.

368

00:59:03.520 --> 00:59:13.479

Stanley Chaves: Yeah. My name is Stanley Chev's. We have property out east of Lodi.

We are aware your power lines are proposed to go. They

369

00:59:13.740 --> 00:59:17.760

Stanley Chaves: from east and west, and then turn north and south

370

00:59:18.050 --> 00:59:25.520

Stanley Chaves: according to the little map that I received. II like many of the other people that I spoke did not get many

371

00:59:26.520 --> 00:59:33.000

Stanley Chaves: information on this. but I have the property adjacent to Patty Creek.

372

00:59:33.450 --> 00:59:46.089

Stanley Chaves: so the power lines look like they're gonna cross east and west across the property, and then head north across the property we have here. Our property extends all the way to Kettleman Lane. My question would be

373

00:59:46.140 --> 00:59:53.610

Stanley Chaves: exactly where these lines are. I mean the way it looks on the map that I've received in the mail and that I've seen online.

374

00:59:54.360 --> 01:00:05.129

Stanley Chaves: It's running at the north the what I call the top end of our field. We have open land. We grow corn and oat silage for our dairy.

375

01:00:05.410 --> 01:00:12.870

Stanley Chaves: These poles in those fields become a big nuisance to us. It's really hard to irrigate row crops

376

01:00:13.040 --> 01:00:14.560

Stanley Chaves: around these polls.

377

01:00:14.740 --> 01:00:17.710

Stanley Chaves: I guess my question is exactly

378

01:00:17.800 --> 01:00:32.060

Stanley Chaves: how close to the property line are they compared to my neighbor, or are they actually in my neighbor's property when they're headed north and south? as far as need for power. I guess we all need power without it.

379

01:00:32.230 --> 01:00:42.510

Stanley Chaves: we don't get anywhere. So I'd just like to get some clarification on exactly where these lines are. and so that I could

380

01:00:42.860 --> 01:00:57.709

Stanley Chaves: maybe suggest other. You know, maybe the other end of the field, or we do have a road between our property and our neighbors property. I'm not sure if it's in their property, or if it's in my property or right next to that road.

381

01:00:57.880 --> 01:01:03.770

Stanley Chaves: I'd just like to get some clarification on that lunete. Have a nice day.

382

01:01:04.990 --> 01:01:14.680

Luis Montes: Thank you. Thank you, Stanley. And just a reminder for questions related to project location in relation to your property or a neighbor's property.

383

01:01:14.680 --> 01:01:35.580

Luis Montes: If you could. S, please send an email or mail your address and location of interest. We can see where it is in relation to the proposed project, and give a timely response to you in case that information prompts additional comments before the close of the public review period on February ninth.

384

01:01:35.670 --> 01:01:38.739

Luis Montes: Perfect. Thank you very much. No problem. Thank you.

385

01:01:48.680 --> 01:01:53.380

Luis Montes: Just a reminder to raise your hand or select

386

01:01:53.530 --> 01:01:55.790

Luis Montes: Star 9. If you'd like to speak.

387

01:01:56.180 --> 01:02:01.669

Luis Montes: I'll give a a few more seconds in case anyone is still interested in leaving a comment.

388

01:02:06.780 --> 01:02:11.910

Luis Montes: It looks like. There are no further comments

389

01:02:12.010 --> 01:02:16.440

Luis Montes: that concludes the comment period for this time.

390

01:02:16.720 --> 01:02:28.850

Luis Montes: I want to thank all of you for joining us today. You can scan the QR code with your smartphone shown on the screen to visit the project website

391

01:02:29.340 --> 01:02:41.920

Luis Montes: again. If you are interested in providing written comments, you can do so by mail at the address shown on the screen, or by emailing NSJT.

392

01:02:42.040 --> 01:02:45.460

Luis Montes: Add Ascent dot, INC.

393

01:02:45.640 --> 01:02:52.499

Luis Montes: Please note that the scoping comment period closes on February ninth, 2024.

394

01:02:52.710 --> 01:02:55.169

Luis Montes: Thank you again, and have a great day.

January 30, 2024 at 6:30 pm

WEBVTT

1

00:00:24.680 --> 00:00:34.110

Boris Sanchez: Okay. Good evening, everyone. We see everybody trickling. And right now we'll get just we'll get started in just a couple of minutes. Give everybody a chance to to log in.

2

00:01:18.270 --> 00:01:21.830

Boris Sanchez: See for every any newcomers. We'll get started in about a minute.

3

00:01:51.800 --> 00:01:56.839

Boris Sanchez: See? Well, I see where your hand up, but we'll be taking questions towards the end of this presentation.

4

00:02:55.380 --> 00:03:00.169

Boris Sanchez: Well, if you have any logistical questions, can you go ahead and put them in in the chat

5

00:03:09.150 --> 00:03:12.060

Boris Sanchez: should be the Q&A button at the bottom of your screen.

6

00:03:21.840 --> 00:03:23.440

Boris Sanchez: Okay, we'll go ahead and get started

7

00:03:23.960 --> 00:03:28.690

Boris Sanchez: welcome. Everyone. This is the second portion or

8

00:03:28.730 --> 00:03:38.559

Boris Sanchez: second telling, I guess, of, the Suka environmental impact report scoping meeting for the Northern San Joaquin. 230 Kv transmission project.

9

00:03:39.120 --> 00:03:44.799

Boris Sanchez: Once again for those of you who are new. If you are interested in finding

10

00:03:44.880 --> 00:03:47.590

Boris Sanchez: materials for this project, you can.

11

00:03:47.700 --> 00:03:49.539

Boris Sanchez: look at the project website.

12

00:03:49.590 --> 00:03:53.940

Boris Sanchez: If you type in your search engine, either on Google,

13

00:03:54.140 --> 00:04:02.030

Boris Sanchez: you can type in CPU C, northern San Joaquin. And it should be the first item that populates on the search engine

14

00:04:03.460 --> 00:04:04.500

Boris Sanchez: next slide.

15

00:04:07.840 --> 00:04:09.580

Boris Sanchez: So for today's meeting.

16

00:04:09.630 --> 00:04:12.720

this meeting is being recorded, as was the first one

17

00:04:12.900 --> 00:04:18.620

Boris Sanchez: both of them will be posted on the website as well as this presentation the slides.

18

00:04:18.730 --> 00:04:22.420

Boris Sanchez: video and audio are disabled by default.

19

00:04:22.870 --> 00:04:25.480

Boris Sanchez: Use the QA. Window to send questions

20

00:04:25.650 --> 00:04:27.949

Boris Sanchez: and thank you for your participation.

21

00:04:31.120 --> 00:04:39.549

Boris Sanchez: So introductions. My name is Boris Sanchez. I work with the CPU C. I am the Sequa Lead Agency. I'm Project Coordinator, for this project

22

00:04:39.560 --> 00:04:41.960

Boris Sanchez: assent is CPU. C's consultant

23

00:04:41.970 --> 00:04:54.010

Boris Sanchez: Heather Blair, on the call is the project manager is the facilitator for this. and low dielectric utility or Leu is the seek responsible agency in the project component.

24

00:04:54.150 --> 00:04:58.190

Boris Sanchez: Anne P. Gene is the project applicant. Next slide.

25

00:05:00.600 --> 00:05:09.809

Boris Sanchez: The meeting purpose is to receive input from the public agencies and interested parties on the scope and content of the environmental impact report

26

00:05:10.200 --> 00:05:18.889

Boris Sanchez: to provide information on the project and the environmental review process and to inform helpful input for this project. Next slide

27

00:05:20.440 --> 00:05:25.049

Boris Sanchez: for the scoping meeting. The agenda is project background and summary

28

00:05:25.450 --> 00:05:28.219

sqin environmental review process.

29

00:05:28.880 --> 00:05:33.260

Boris Sanchez: environmental impact report or ei eir scope and schedule

30

00:05:34.010 --> 00:05:39.610

Boris Sanchez: and public agency comments on the scope of the Eir next slide.

31

00:05:41.000 --> 00:05:43.450

Boris Sanchez: and then I'll hand it over to heather player to continue.

32

00:05:44.190 --> 00:05:54.049

Heather Blair, Ascent: Good evening, everyone. I'm Heather Blair, with a sense a CPU consultant. I'm going to start by giving a bit of a a project background and a summary

33

00:05:54.090 --> 00:05:55.789

Heather Blair, Ascent: next slide, please.

34

00:05:57.750 --> 00:06:10.600

Heather Blair, Ascent: This project is being proposed by Pg. And E. And low dielectric utility, or Leu Pg. And E is an investor owned utility that's regulated by the CPU C.

35

00:06:10.690 --> 00:06:17.380

Heather Blair, Ascent: And Leu is a publicly owned municipal utility that's operated by the city of Lodi.

36

00:06:17.980 --> 00:06:35.139

Heather Blair, Ascent: So the purpose of this project is to address reliability and capacity issues that have been identified by the California system operator or caliso on the existing Pg. And E. 2, 30 and Kv, so N. 60 Kv systems

37

00:06:35.860 --> 00:06:36.929

Heather Blair, Ascent: next slide.

38

00:06:38.300 --> 00:07:03.169

Heather Blair, Ascent: So a bit more context on why we're here today. Pg, and E. And L. You together, developed the proposed Northern San Joaquin transmission project, and as I mentioned, Pg. And E. Is regulated by the CPU. C. So Pg. And E. Submitted an application to the CPU. C for a certificate of public convenience and necessity, or Cpcn.

39

00:07:03.200 --> 00:07:18.969

Heather Blair, Ascent: And included in that application, is what's called a proponents, environmental assessment or PA, and that was prepared by Pg. And E. In coordination with Lau, to consider the entire project or the whole of the project under sequa

40

00:07:19.000 --> 00:07:27.429

Heather Blair, Ascent: and that is because the Pg. And E and Leu project components are interrelated. As I'll explain in later slides.

41

00:07:27.750 --> 00:07:47.359

Heather Blair, Ascent: So after the CPU. C. Reviewed the application and themed it complete that triggered the start of the sequel process, which includes preparation of an environmental impact report or eer. The Cpc will be the the lead Agency elusive responsible agency under sequa.

42

00:07:47.520 --> 00:08:04.359

Heather Blair, Ascent: and they both need to comply with Sequa, because they're both

public agencies with a discretionary action. So the decision makers at Leu and at CPU. C. Will consider the Eir when deciding about project approval

43

00:08:05.500 --> 00:08:06.610

Heather Blair, Ascent: next slide.

44

00:08:09.020 --> 00:08:20.689

Heather Blair, Ascent: So now some information about the the proposed project. The proposed Northern San Joaquin Transmission project is located in northeastern San Joaquin County.

45

00:08:20.760 --> 00:08:39.950

Heather Blair, Ascent: there are several proposed project components. Including those that are proposed by Lu that are located within the city of Lodi city limits, and the remaining project components extend east of the city of Lodi into unincorporated areas of the county

46

00:08:40.820 --> 00:08:41.900

Heather Blair, Ascent: next slide.

47

00:08:43.600 --> 00:08:48.029

Heather Blair, Ascent: So here's an overall summary of the proposed project.

48

00:08:48.430 --> 00:08:58.209

Heather Blair, Ascent: It includes nude overhead. Double circuit, 2 30 kb. Transmission lines, 10.6 miles in total.

49

00:08:58.470 --> 00:09:10.929

Heather Blair, Ascent: It includes an expanded substation, a modified substation, a new state se, new substation, and a new switching station. And I'll explain all of this in more detail in later slides.

50

00:09:11.170 --> 00:09:17.239

Heather Blair, Ascent: It also includes a proposed reconfiguration of 4 existing cave lines.

51

00:09:17.400 --> 00:09:22.880

Heather Blair, Ascent: the relocation or extension of 2 existing 12 CD. Lines.

52

00:09:23.160 --> 00:09:38.119

Heather Blair, Ascent: upgrades at 4 remote and substations and one repeater station. And I'll note that the project considers construction, operation and long-term maintenance of all of these proposed project components

53

00:09:39.090 --> 00:09:40.160

Heather Blair, Ascent: next slide.

54

00:09:41.300 --> 00:09:52.789

Heather Blair, Ascent: So we'll be explaining the proposed project in terms of Pg and E's project components and Le use project components. But again, they're considered a single project under sequoi.

55

00:09:53.300 --> 00:10:04.699

Heather Blair, Ascent: So pg. And E proposes to loop it's existing overhead bright, and below that 2 30 kb. Transmission line through an expanded Pg. And E. Lockford substation.

56

00:10:04.890 --> 00:10:23.620

Heather Blair, Ascent: and this loop, which is you know, better understood as a a connection, will re require a new 3.8 mile overhead line that extends from the Brighton below to 30 kb. Transmission line through the Pg. And E. Lockford substation, which is proposed for expansion.

57

00:10:23.710 --> 00:10:34.660

Heather Blair, Ascent: and the new 230 Kv. Line would then continue for another 6.8 miles as an overhead double circuit, 230 Kv. Line on tubular steel poles

58

00:10:34.700 --> 00:10:42.230

Heather Blair, Ascent: from the expanded Pg. And E. Lockford substation to the proposed Pg. And E. Thurmond switching station

59

00:10:42.240 --> 00:10:46.410

Heather Blair, Ascent: that's adjacent to Leu's existing industrial substation.

60

00:10:47.100 --> 00:10:59.329

Heather Blair, Ascent: So this work would trigger the need for system, protection and communication upgrades at some existing Pg. And E. Facilities that are mostly outside of the the city of Lodi.

61

00:10:59.360 --> 00:11:08.979

Heather Blair, Ascent: These system protection upgrades would occur at Pg. And E's

load, I substation, which is just a bit, and north of the western terminus of the project

62

00:11:09.150 --> 00:11:20.110

Heather Blair, Ascent: and other upgrades would occur at existing facilities in Lyndon, in Sacramento and Rio also as well as a facility in in Contra Costa counties

63

00:11:21.570 --> 00:11:22.620

Heather Blair, Ascent: next slide.

64

00:11:23.850 --> 00:11:51.420

Heather Blair, Ascent: So here's the map again. But now that we've explained some of the project components, let's revisit them with this map. So, starting from the east, there, Pg and E. Would construct a new three mile overhead, 230 kv. Line from that existing Brighton Bay, Lota, 230 kb. Transmission line west to the Pg. And E. Lockford substation, which is proposed for expansion.

65

00:11:51.650 --> 00:12:12.749

Heather Blair, Ascent: and then from the expanded Lockford substation the new 230 Kv. Line would continue another 6.8 miles west to the city of Lodi, where Pg. And E. Would build the Thurman switching station. And those are are the main project components that are proposed by Ipg and E

66

00:12:13.420 --> 00:12:14.790

Heather Blair, Ascent: next slide, please.

67

00:12:15.870 --> 00:12:30.329

Heather Blair, Ascent: So here is the the typical design of the tubular steel poles that would be used to to build the the new proposed transmission line. All the the structures would be poles rather rather than lattice towers

68

00:12:31.130 --> 00:12:32.250

Heather Blair, Ascent: next slide.

69

00:12:34.680 --> 00:12:42.329

Heather Blair, Ascent: So this is a figure of the proposed expansion of the existing Pg. And E. Lockford substation.

70

00:12:42.350 --> 00:12:51.700

Heather Blair, Ascent: it would be expanded to the east of the existing substation on Pgne owned property to accommodate the new transmission lines

71

00:12:53.190 --> 00:12:54.290

Heather Blair, Ascent: next slide.

72

00:12:55.460 --> 00:13:04.620

Heather Blair, Ascent: So now we'll talk about the Leu project components, and these are those that would be constructed and operated by by low dielectric utility.

73

00:13:05.120 --> 00:13:30.990

Heather Blair, Ascent: So Leu proposes to construct a new 2, 30 kv. 60 kv. Substation, called the Guild Substation. This is where the Pg. And E. 2, 30 kv. Lines would terminate, and it's where the power would essentially step down from 2 30 kb. To the lower voltage of 60 kb. To interconnect locally and serve Leu's customers.

74

00:13:31.970 --> 00:13:43.630

Heather Blair, Ascent: There's also proposed reconfiguration of 60 Kv. Lines between the Guild and industrial substations, as well as the relocation of existing 12 kb lines

75

00:13:44.570 --> 00:13:45.580

Heather Blair, Ascent: next slide.

76

00:13:48.240 --> 00:14:04.800

Heather Blair, Ascent: So Ellie use proposed project components are occurring within the the city of Lodi. The area shown here on this figure. The the building with the big white roof. There is Pacific coast producers

77

00:14:05.750 --> 00:14:08.340

Heather Blair, Ascent: so moving east

78

00:14:08.580 --> 00:14:29.730

Heather Blair, Ascent: or sorry west to east. Now on this figure we have the existing Leu industrial substation, and that's located next to the proposed Leu Guild substation, which, be, it would be a new substation, and next to that is Pg. And E's proposed Thurman switching station.

79

00:14:30.240 --> 00:14:43.260

Heather Blair, Ascent: and then the the various 60 Kv line reconfigurations and the 12 Kv line relocations would all happen in relatively short segments that are immediately surrounding these facilities.

80

00:14:45.090 --> 00:14:46.780

Heather Blair, Ascent: Okay, next slide, please.

81

00:14:47.980 --> 00:14:53.679

Heather Blair, Ascent: So now we'll go into an overview of sequa and the environmental review process.

82

00:14:56.390 --> 00:15:10.209

Heather Blair, Ascent: So as I explained earlier, the CPU C and Leu. They're both public agencies with a discretionary action. And so they must comply with the California Environmental Quality Act or

83

00:15:10.460 --> 00:15:26.210

Heather Blair, Ascent: the basic purposes of sequa are threefold on this slide. The first is information disclosure, that is to inform decision makers and the public about potentially significant environmental effects of a proposed project.

84

00:15:26.710 --> 00:15:39.049

Heather Blair, Ascent: Another purpose is to reduce impacts. That is the the sequel process identifies mitigation measures and alternatives that could avoid or lessen potentially significant impacts.

85

00:15:39.300 --> 00:15:48.090

Heather Blair, Ascent: And importantly, public participation that is to allow for meaningful public participation and opportunities for comment.

86

00:15:48.530 --> 00:15:55.469

Heather Blair, Ascent: And the sequa document that we will be preparing is an environmental impact report or er

87

00:15:56.050 --> 00:15:57.089

Heather Blair, Ascent: next slide

88

00:15:58.880 --> 00:16:03.809

Heather Blair, Ascent: shown on this slide is a flow chart with the sequa process.

89

00:16:03.990 --> 00:16:20.209

Heather Blair, Ascent: So first step is that Pg. And E. Submitted their application to the CPU. C. For a certificate of public convenience and necessity, or Cpcn. As I

mentioned, included in that application with the pea

90

00:16:20.230 --> 00:16:26.479

Heather Blair, Ascent: proponents environmental assessment that was prepared by Pg. And E in coordination with Leu.

91

00:16:26.650 --> 00:16:52.009

Heather Blair, Ascent: And so, after the CPU. C. Received the application, reviewed it it was deemed complete that triggered the start of the sequel process, which begins with the issuance of a notice of preparation of an eir or an Nop. And a 30 day public comment period to gather information from the public on the scope and content of the Eir.

92

00:16:52.030 --> 00:16:58.539

Heather Blair, Ascent: So that's where we are now. We're at the the public meeting for the scoping process.

93

00:16:58.650 --> 00:17:13.170

Heather Blair, Ascent: After the scoping process. So that after that 30 day review period concludes a sense, and the CPU. Will be preparing a scoping report that includes all of the comments received on the Nop. And we'll be posting that

94

00:17:13.220 --> 00:17:15.089

Heather Blair, Ascent: on the project website.

95

00:17:15.560 --> 00:17:32.419

Heather Blair, Ascent: We'll begin preparation of the draft, Eir, and when that's complete and ready to release to the public, we will release what's called a notice of availability or an noa, and if you receive the notice of preparation, you'll be receiving the notice of availability

96

00:17:32.420 --> 00:17:58.049

Heather Blair, Ascent: that will let you know that there is a a draft, Eir, that's available for your review, and there is a 45 day public comment period where you can review the the draft. Eir provide comments will have a a public meeting. Similar to this one. The difference, I suppose, between the comments gathered during the scoping period which are for receiving information

97

00:17:58.290 --> 00:18:08.340

Heather Blair, Ascent: during the comments received on the draft. Yeah, Eir, we'll be responding to those in writing and including that in what's called a final yeah er.

98

00:18:08.550 --> 00:18:21.539

Heather Blair, Ascent: and so then the last step is that the decision makers consider the entire Eir, the draft and the final in making their decision about the the project and and Pg, and these applications

99

00:18:22.680 --> 00:18:23.630

Heather Blair, Ascent: next slide.

100

00:18:26.090 --> 00:18:33.369

Heather Blair, Ascent: So now we'll we'll talk A in a bit more specifics about the scope and schedule for this project.

101

00:18:34.020 --> 00:18:35.139

Heather Blair, Ascent: Next slide

102

00:18:36.700 --> 00:18:55.139

Heather Blair, Ascent: listed on this slide are the 19 environmental resource areas that are considered under sequence. So, for example, the Eir will be analyzing impacts to agriculture, to aesthetics and hydrology and and water quality.

103

00:18:55.150 --> 00:19:03.599

Heather Blair, Ascent: and more. And we welcome your comments on anticipated physical effects of the proposed project on these resource areas

104

00:19:04.960 --> 00:19:05.970

Heather Blair, Ascent: next slide

105

00:19:07.930 --> 00:19:10.630

Heather Blair, Ascent: so as

106

00:19:10.760 --> 00:19:29.250

Heather Blair, Ascent: the Eir will include an environmental analysis for each resource area and for each resource area, the environmental analysis will include an existing setting, which is includes the environmental setting as well as the regulatory setting for that resource area

107

00:19:29.450 --> 00:19:37.270

Heather Blair, Ascent: threshold of significance. So we will state what defines a significant impact under sequa.

108

00:19:37.500 --> 00:19:52.209

Heather Blair, Ascent: And then the meat of the analysis really is the identification of project impacts and mitigation. So the actual analysis of impacts, the identification of mitigation measures. And then an analysis of

109

00:19:52.320 --> 00:19:58.870

Heather Blair, Ascent: how the mitigation reduces the impact. And if there's any reduction in the severity of the impact.

110

00:19:59.950 --> 00:20:13.159

Heather Blair, Ascent: there also be an an analysis of cumulative impacts for each resource area. And that is how the impact of this project might combine with the impacts of of related projects on each resource.

111

00:20:13.510 --> 00:20:18.749

Heather Blair, Ascent: And then, of course, the alternatives analysis which I'll talk about in a bit more detail.

112

00:20:21.990 --> 00:20:37.269

Heather Blair, Ascent: So the identification and analysis of alternatives to the proposed project. It's an essential element of an Eir and based on the feedback that we've already received. We know that they're of interest to to the public, to you all.

113

00:20:37.590 --> 00:20:50.759

Heather Blair, Ascent: So we'd like to explain just a bit more about sequa alternatives to hopefully help inform your comments and to help you all make suggestions about alternatives that could be considered in the Eir.

114

00:20:51.370 --> 00:21:04.580

Heather Blair, Ascent: So here are the cfla requirements for alternatives. It's that they avoid or substantially lessen significant effects of the project. that they be legally, technically and regulatory, feasible.

115

00:21:04.780 --> 00:21:15.790

Heather Blair, Ascent: and that they meet most of the basic project objectives. A basic project objective is that the reliability and capacity issues that were identified

116

00:21:15.800 --> 00:21:18.550

Heather Blair, Ascent: are addressed next slide.

117

00:21:21.390 --> 00:21:48.060

Heather Blair, Ascent: So how are alternatives identified? Well, they could be identified by you as part of the public and the agencies that are commenting on the Nop. There have been several alternatives that have been identified by Pg. And Ellie and Leu in their proponents, environmental assessment, and those alternatives will be objectively analyzed and considered by the CPU C in its eir

118

00:21:48.990 --> 00:22:00.230

Heather Blair, Ascent: and as part of the Eir preparation process. The CPU C secret team will also be identifying alternatives. So what types of alternatives

119

00:22:00.290 --> 00:22:06.149

Heather Blair, Ascent: might they be so there could be alternative routes for the transmission line.

120

00:22:06.230 --> 00:22:11.610

Heather Blair, Ascent: There could be alternative locations for different electrical infrastructure.

121

00:22:11.670 --> 00:22:19.970

Heather Blair, Ascent: There could be alternative technologies, including undergrounding the the transmission lines and and other

122

00:22:20.030 --> 00:22:21.440

Heather Blair, Ascent: other ideas too.

123

00:22:22.100 --> 00:22:33.450

Heather Blair, Ascent: There's also the no project alternative. This is required by Sequa, and it will be evaluated in the Eir, and the no project is essentially

124

00:22:33.520 --> 00:22:40.599

Heather Blair, Ascent: an analysis of the environmental effects that could occur by not implementing the proposed project

125

00:22:41.680 --> 00:22:42.730

Heather Blair, Ascent: next slide.

126

00:22:43.850 --> 00:22:56.579

Heather Blair, Ascent: So this is the schedule for the Eir we are currently in the notice of preparation and scoping period, which concludes on February ninth.

127

00:22:56.970 --> 00:23:04.900

Heather Blair, Ascent: we expect that the draft Eir will be released for public review this summer potentially in the fall.

128

00:23:04.910 --> 00:23:11.730

Heather Blair, Ascent: with the final Eir being released either at the end of 2024, potentially early, 2025

129

00:23:11.820 --> 00:23:17.569

Heather Blair, Ascent: and the the decision ultimately occurring in 2,025

130

00:23:19.010 --> 00:23:20.230

Heather Blair, Ascent: next slide.

131

00:23:22.250 --> 00:23:29.350

Heather Blair, Ascent: So now to the most important part of the meeting, and that is providing comments on the scope of the Eir

132

00:23:30.570 --> 00:23:34.790

Heather Blair, Ascent: next slide. Thanks. We'd like to provide some tips on

133

00:23:35.370 --> 00:23:52.550

Heather Blair, Ascent: on providing useful comments to inform the scope and content of the Eir. So, for example, your comment could provide information on resources potentially present in the project area ways that those resources could be impacted by the project.

134

00:23:52.630 --> 00:24:03.460

Heather Blair, Ascent: You could offer ideas for feasible mitigation measures suggestions for alternatives to the project that could avoid or reduce potentially significant impacts.

135

00:24:03.580 --> 00:24:17.890

Heather Blair, Ascent: You could identify any public agencies or organizations or individuals that the cpucc should be should be noticing in case they're not already provided. Notice, we'd like to include all interested parties.

136

00:24:18.550 --> 00:24:35.249

Heather Blair, Ascent: And we understand that there is interest in where this project is relative to specific properties, maybe your property, your neighbors property. We don't have that type of detailed information to

137

00:24:35.310 --> 00:24:51.950

Heather Blair, Ascent: convey. You know, very detailed information about where is my property relative to the project location at this meeting. but we also recognize that knowing that information will be important for developing useful comments.

138

00:24:52.270 --> 00:25:03.910

Heather Blair, Ascent: So if you want to send your property information via email or or mail with specific questions. We'll get back to you in a timely manner, so that you're able to to develop those comments.

139

00:25:04.620 --> 00:25:08.160

Heather Blair, Ascent: So now I'll turn it over to Luis.

140

00:25:09.320 --> 00:25:19.110

Luis Montes, Ascent: Awesome. Thank you. Heather. Hi, everyone! My name is Luis Montes. I'm with the sent, and I will be facilitating the scoping comment portion of today's meeting.

141

00:25:20.290 --> 00:25:32.230

Luis Montes, Ascent: Please note that only verbal comments will be accepted either via zoom or phone. We ask that you limit your verbal comments today to 3 min or less. And one comment per speaker.

142

00:25:32.650 --> 00:25:45.799

Luis Montes, Ascent: we will put a timer on the screen so that you are able to see how much time you have left. you may use the Q&A function if you are having technical issues or have clarifying questions.

143

00:25:46.210 --> 00:25:52.940

Luis Montes, Ascent: But please note that we will not be providing responses to comments received during scoping.

144

00:25:53.350 --> 00:26:06.839

Luis Montes, Ascent: including at this meeting. Instead, this public review process is intended for the CPU. C. To hear your comments on the scope of what the draft er should be addressing

145

00:26:07.400 --> 00:26:19.929

Luis Montes, Ascent: when the draft Eir is released to the public. Later this year the Cpuc will be taking public comments on that document, and will respond to each comment in the final Eir

146

00:26:21.100 --> 00:26:31.979

Luis Montes, Ascent: today. And throughout this 30 day scoping period we would like to gather information from you. If you have clarifying questions, we encourage you to submit them in writing

147

00:26:32.130 --> 00:26:39.470

Luis Montes, Ascent: the CPU C and ascent are reviewing written comments as they are received via email and mail.

148

00:26:40.650 --> 00:26:52.769

Luis Montes, Ascent: If there is a written question for which an answer would allow the person to develop a comment on the project, we will be more than happy to provide the requested information in a timely manner.

149

00:26:53.160 --> 00:27:05.709

Luis Montes, Ascent: We likely won't be responding to questions received verbally at today's meeting, because we are still in the initial stages of information gathering. But we will be able to provide a more thoughtful response

150

00:27:05.730 --> 00:27:08.990

Luis Montes, Ascent: with helpful information. If it is in writing.

151

00:27:13.280 --> 00:27:17.900

Luis Montes, Ascent: If you're using zoom on your computer, mobile or smart device.

152

00:27:17.990 --> 00:27:30.279

Luis Montes, Ascent: Please go ahead and look for the raise hand button at the bottom of the screen to let us know that you'd like to speak. When it is your turn to speak, you will hear your name called.

153

00:27:30.570 --> 00:27:36.620

Luis Montes, Ascent: and we'll receive a notification stating the host would like you to unmute your microphone

154

00:27:37.270 --> 00:27:49.409

Luis Montes, Ascent: from there. Select, unmute from there, select, unmute myself, and at that point you will be able to begin speaking. Once you're done with your comments, you will lower your hand and go back on you.

155

00:27:52.620 --> 00:27:54.909

Luis Montes, Ascent: If you are calling by phone.

156

00:27:54.960 --> 00:28:06.049

Luis Montes, Ascent: go ahead and press Star 9 to indicate that you would like to speak and please listen for the message. The host would like you to unmute your microphone.

157

00:28:06.510 --> 00:28:12.030

Luis Montes, Ascent: From there you can press Star 6 to unmute. and when you're done with your comment.

158

00:28:12.040 --> 00:28:16.150

Luis Montes, Ascent: please remember to press Star 6 again, to remute.

159

00:28:19.860 --> 00:28:28.220

Luis Montes, Ascent: If you're interested in providing written comments. you can do so by mail at the address shown on the screen.

160

00:28:28.580 --> 00:28:33.230

Luis Montes, Ascent: or by emailing NSJT.

161

00:28:33.500 --> 00:28:37.130

Luis Montes, Ascent: Add Ascent dot, INC.

162

00:28:37.600 --> 00:28:43.790

Luis Montes, Ascent: Please note the scoping comment. Period closes on February ninth. 2024.

163

00:28:48.380 --> 00:28:55.710

Luis Montes, Ascent: Once again we ask that you keep your comments to 3 min or less, and limit it to one comment per speaker.

164

00:28:56.000 --> 00:29:05.959

Luis Montes, Ascent: we will go ahead and put a timer up on the screen so you can see how much time you have left to speak. Speakers will be called in the order of

their hands raised.

165

00:29:06.350 --> 00:29:12.839

Luis Montes, Ascent: Remember that this is a shared space for all, and we ask that you please be respectful of your peers and the presenters.

166

00:29:14.150 --> 00:29:18.359

Luis Montes, Ascent: With that we will go ahead and start accepting verbal comments.

167

00:29:22.800 --> 00:29:30.479

Luis Montes, Ascent: All right. It looks like we have one comment. So far from William Mcvicker.

168

00:29:31.040 --> 00:29:36.859

Luis Montes, Ascent: Mr. Mick Vicker, you are. Please unmute yourself. And

169

00:29:37.150 --> 00:29:39.360

Luis Montes, Ascent: you should be able to speak.

170

00:29:45.150 --> 00:29:47.259

Will McVicker: Hi!

171

00:29:47.490 --> 00:29:51.240

Excuse me, this is actually Mrs. Mcvicker.

172

00:29:51.340 --> 00:29:53.800

Will McVicker: My name is Leah LIA.

173

00:29:54.190 --> 00:29:58.880

Will McVicker: Just my husband and I are using the zoom together.

174

00:29:59.320 --> 00:30:03.370

Will McVicker: So I just had a couple of questions, and

175

00:30:03.460 --> 00:30:07.050

Will McVicker: it seems that Tracy

176

00:30:07.100 --> 00:30:09.900

Will McVicker: has been answering them.

177

00:30:10.280 --> 00:30:14.699

Will McVicker: but I did want to

178

00:30:14.770 --> 00:30:17.030

Will McVicker: find out is.

179

00:30:17.430 --> 00:30:28.200

Will McVicker: how will the ranchers be affected? W. You know, if we can get compensation for the land that will be compensated are not.

180

00:30:28.570 --> 00:30:29.760

Will McVicker: And

181

00:30:30.030 --> 00:30:36.189

Will McVicker: anyway, that's just a question I have.

182

00:30:41.090 --> 00:30:44.680

Luis Montes, Ascent: Thank you, Miss Mc. Miss Mcvicker.

183

00:30:46.540 --> 00:31:05.240

Luis Montes, Ascent: for specific questions like that. II do advise that you submit the question via email or mail so that it can be responded to. Accordingly, with information that you're requesting again referring to

184

00:31:06.110 --> 00:31:07.830

Luis Montes, Ascent: the the

185

00:31:07.900 --> 00:31:16.039

Luis Montes, Ascent: email that is, on the screen as well as the the address. So N sj, tp, at ascent in C,

186

00:31:16.830 --> 00:31:19.960

Will McVicker: correct. Thank you

187

00:31:26.090 --> 00:31:28.840

Luis Montes, Ascent: as a reminder, if you would like. Oh.

188

00:31:29.340 --> 00:31:31.709

Luis Montes, Ascent: if you have a

189

00:31:34.020 --> 00:31:40.390

Luis Montes, Ascent: a comment or please remember to use the raise your hand function.

190

00:31:42.070 --> 00:31:46.179

Luis Montes, Ascent: Mr. And Miss Mcvicker, I see that your hand is still raised.

191

00:31:46.190 --> 00:31:47.910

Luis Montes, Ascent: Is there a

192

00:31:52.600 --> 00:31:53.770

Luis Montes, Ascent: got it? It's down

193

00:31:58.030 --> 00:32:01.680

Luis Montes, Ascent: again. If you are on the phone and would like to

194

00:32:01.720 --> 00:32:06.889

Luis Montes, Ascent: share a comment. Please select Star 9 to indicate that you would like to speak.

195

00:32:15.880 --> 00:32:20.470

Luis Montes, Ascent: It does appear that there are no further comments.

196

00:32:22.930 --> 00:32:25.340

Luis Montes, Ascent: I'll wait a few more seconds, just in case.

197

00:32:30.720 --> 00:32:36.080

Luis Montes, Ascent: Andy Cutlick. I see you put your hand up and down a few times want to make sure

198

00:32:37.450 --> 00:32:38.780

Luis Montes, Ascent: that you

199

00:32:39.180 --> 00:32:42.050

Luis Montes, Ascent: don't, in fact, want to share at the moment.

200

00:32:42.740 --> 00:32:43.500

Luis Montes, Ascent: and if

201

00:32:46.810 --> 00:32:53.159

Luis Montes, Ascent: it looks like we have a hand raised from Jack Binder

202

00:32:53.260 --> 00:32:56.990

Luis Montes, Ascent: apologies for mispronouncing. But

203

00:32:57.320 --> 00:33:02.229

Luis Montes, Ascent: you can go off mute and share your comments.

204

00:33:16.310 --> 00:33:21.219

Luis Montes, Ascent: First name is Jack Binder. Last name Congura.

205

00:33:21.620 --> 00:33:25.759

Luis Montes, Ascent: You should be able to unmute and share your comments.

206

00:33:37.060 --> 00:33:39.290

Luis Montes, Ascent: We're not hearing anything on our end.

207

00:33:47.500 --> 00:33:48.420

Luis Montes, Ascent: It looks

208

00:33:48.710 --> 00:33:55.930

Luis Montes, Ascent: if you're having any technical difficulties, please use the QA. Function, and we will make sure to respond

209

00:34:03.890 --> 00:34:06.940

Luis Montes, Ascent: as a reminder. Please use the raise hand function.

210

00:34:23.150 --> 00:34:27.650

Luis Montes, Ascent: Well, Mick Vicker, I see you have your hand raised again.

211

00:34:34.980 --> 00:34:37.689

Luis Montes, Ascent: I will unmute

212

00:34:40.909 --> 00:34:41.610

so

213

00:34:42.030 --> 00:34:42.909

Will McVicker: Hi!

214

00:34:44.070 --> 00:34:48.110

I was just wondering, can we get a copy of

215

00:34:48.320 --> 00:34:51.629

Will McVicker: the Pg. And E. Application

216

00:34:52.320 --> 00:34:53.860

Will McVicker: for this project?

217

00:34:56.810 --> 00:34:59.769

Heather Blair, Ascent: Yes, that's available on the project website.

218

00:35:00.090 --> 00:35:05.580

Heather Blair, Ascent: The project website is accessible from the QR code. That's on the screen

219

00:35:05.590 --> 00:35:23.429

Heather Blair, Ascent: by Googling, or, you know, putting into your search engine, CPU C. Northern San Joaquin, or there's a link to the project website in the chat that was put in there at the outside of this presentation, and the PA is there. The pro, the proponents, environmental assessment.

220

00:35:24.180 --> 00:35:33.290

Heather Blair, Ascent: Okay, perfect. Thank you. Sure. And this presentation will also be uploaded to the project website.

221

00:35:34.250 --> 00:35:38.110

Luis Montes, Ascent: Thank you. You may now lower hand and

222

00:35:38.970 --> 00:35:41.639

Luis Montes, Ascent: return to mute. Thank you so much.

223

00:35:48.550 --> 00:35:53.820

Luis Montes, Ascent: I'll leave a few more seconds for any additional comments

224

00:35:54.960 --> 00:35:57.510

Luis Montes, Ascent: again. Please use the raise hand function

225

00:35:59.000 --> 00:36:01.170

Luis Montes, Ascent: or select star 9

226

00:36:02.750 --> 00:36:10.939

Boris Sanchez: least. Is there a way to have Andy speak? Andy Cutlick is having trouble. Raising his hand. Yes, I saw him.

227

00:36:18.040 --> 00:36:18.930

Andi Kutlik: Hello.

228

00:36:19.260 --> 00:36:21.860

Luis Montes, Ascent: Andy Cutlick, you are

229

00:36:21.930 --> 00:36:28.809

Luis Montes, Ascent: now you're welcome to share your comments. Thank you. I'm sorry I was having trouble there.

230

00:36:28.850 --> 00:36:42.790

Andi Kutlik: Ma, thank you. My name is Andy Cutlick, and I live on Vintage road in East Lodi, within 300 feet of proposed project. I'm sure the project was in the planning stages for many years prior to 2,015

231

00:36:43.000 --> 00:36:50.349

Andi Kutlik: Pg. And E. States that they started their public notification and outreach in 2,015, when it was called

232

00:36:50.450 --> 00:37:08.810

Andi Kutlik: the Pg. And E. Northern San Joaquin power connect, and it included running new transmission lines to North Stockton, near 8 Mile Road, and I 5 in July of 2,019, the project changed, and the route for lines to connect to the Trinity Substation or Stockton were dropped.

233

00:37:09.230 --> 00:37:19.009

Andi Kutlik: I have met several people who will be directly affected by this project

that had not even heard about the project until last fall 2023

234

00:37:19.570 --> 00:37:35.889

Andi Kutlik: in Commissioner Karen Douglas's scoping memo and ruling which I received via email yesterday, page 10, under number 6, public outreach. It states Pg. And E. Provided public notice of this matter as required by direct mail

235

00:37:35.890 --> 00:37:52.910

Andi Kutlik: to all owners of land on which the proposed facility would be located, and owners of property within 300 feet of the right of way as determined by the most recent local assessors. Parcel roll available to the utility at the time the notice is sent.

236

00:37:53.040 --> 00:38:11.089

Andi Kutlik: my comment is that land has changed hands between 2,015. And now was the mailing list updated. I would hope a company whose proposal to construct a project of a hundred 52.9 million dollars would make sure that the affected landowners were properly notified.

237

00:38:11.210 --> 00:38:15.300

Andi Kutlik: Why weren't notices sent by certified mail or registered mail?

238

00:38:15.370 --> 00:38:31.120

Andi Kutlik: We have been trying to get updates on the project since July of 19 Pg. And E. Has not been forthcoming with which route they chose until we found notices posted on utility polls along the proposed route. In September 2023,

239

00:38:31.350 --> 00:38:45.660

Andi Kutlik: we were told to check the website, which was not updated between July 2,019, and around September tenth, 2023, when notices were posted that the application had been filed with the Cpuc.

240

00:38:46.530 --> 00:39:00.330

Andi Kutlik: It's already been proven that 2, 30 KV. Transmission lines can be buried. The presentation shows that the route from the Lu industrial substation to the Pg. And E. Lockford substation is 6.8 miles long.

241

00:39:00.440 --> 00:39:03.549

Andi Kutlik: If you look at a map, that route is not a straight shot.

242

00:39:03.560 --> 00:39:22.830

Andi Kutlik: it dog legs south and proposes to make a new power corridor through existing prime agricultural land. If the lines were buried underground at Victor Road, Slash Highway 12, it would make more sense. There is an existing vacant corridor on the north side of that road from roughly Cluff Avenue.

243

00:39:22.980 --> 00:39:42.499

Andi Kutlik: past the town of Victor, that is, at least half of the route to the Lockford substation. Additional. Note. The Riverside Transmission Reliability project in 2,014 buried 2 30 Kv. Lines right down the middle of the city street, which were surrounded by multiple story buildings. Thank you for your time.

244

00:39:43.340 --> 00:39:46.599

Luis Montes, Ascent: Thank you. Ms. Kuttlick. You may now remute your.

245

00:39:54.980 --> 00:40:03.440

Luis Montes, Ascent: I saw a few hands go a couple hands go up and and then down. Just want to confirm that there are no more comments.

246

00:40:04.370 --> 00:40:07.340

Luis Montes, Ascent: I believe I saw a hand from

247

00:40:11.290 --> 00:40:14.420

Luis Montes, Ascent: Menroup and Jack Binder.

248

00:40:17.920 --> 00:40:25.309

Luis Montes, Ascent: if you're having any technical technical issues, please. Let us know in the chat, and we'll make sure to unmute. You.

249

00:40:44.920 --> 00:40:49.759

Luis Montes, Ascent: Just want to confirm on on our end that there are no comments in the chat

250

00:40:52.080 --> 00:40:53.620

Luis Montes, Ascent: from the project. Team

251

00:40:55.620 --> 00:40:57.329

Luis Montes, Ascent: doesn't look like it

252

00:41:02.870 --> 00:41:08.490

Luis Montes, Ascent: again. Please use the raise hand function or star 9. If you are

on the phone. I will

253

00:41:09.640 --> 00:41:11.960

Luis Montes, Ascent: give it. A few more seconds

254

00:41:21.420 --> 00:41:30.409

Luis Montes, Ascent: does appear like there are no further comments. So if there are no further comments that does conclude the comment period for this time.

255

00:41:31.620 --> 00:41:34.869

Luis Montes, Ascent: We want to thank all of you for joining us today.

256

00:41:35.520 --> 00:41:39.900

Luis Montes, Ascent: If you still have comments. You can.

257

00:41:40.650 --> 00:41:52.910

Luis Montes, Ascent: It's still the scoping period is still open. But we wanna you can access the project website by scanning the QR code with your smartphone shown on the screen.

258

00:41:53.770 --> 00:41:58.329

Luis Montes, Ascent: The project website has also been pasted into the chat for you to access.

259

00:41:58.340 --> 00:42:11.059

Luis Montes, Ascent: You may also find it by entering Cpuc, Northern San Joaquin transmission project into your search engine, and it will be one of the first

260

00:42:11.230 --> 00:42:12.709

Luis Montes, Ascent: sites to pop up.

261

00:42:13.770 --> 00:42:23.799

Luis Montes, Ascent: And again, if you're still interested in providing written comments, you can do so by mail at the address shown on the screen. or by email.

262

00:42:24.630 --> 00:42:28.489

Luis Montes, Ascent: by emailing NSJT. P.

263

00:42:28.710 --> 00:42:32.070

Luis Montes, Ascent: Add a cent dot, INC.

264

00:42:32.710 --> 00:42:38.180

Luis Montes, Ascent: And please note that the scoping comment period closes on February ninth.

265

00:42:38.340 --> 00:42:43.280

Luis Montes, Ascent: 2024. Thank you all again, and have a great rest of your night.