

PUBLIC UTILITIES COMMISSION

505 VAN NESS AVENUE
SAN FRANCISCO, CA 94102-3298



November 23, 2010

Mr. Alan F. Colton
Manager – Environmental Services
Sunrise Powerlink Transmission Project
8315 Century Park Court, CP21G
San Diego, CA 92123-1550

RE: SDG&E Sunrise Powerlink Transmission Line Project - Notice to Proceed (NTP # 10)

Dear Mr. Colton,

On October 7, 2010 San Diego Gas and Electric (SDG&E) requested authorization from the California Public Utilities Commission (CPUC) to commence with construction of Link 4, 230 kV Underground Transmission Line, Segment 15 of the Sunrise Powerlink Project.

The SDG&E Sunrise Powerlink Transmission Line Project was evaluated in accordance with the National Environmental Policy Act and California Environmental Quality Act. The mitigation measures and applicant-proposed measures (APMs) described in the Final Environmental Impact Report/Statement were adopted by the CPUC and BLM as conditions of project approvals. The CPUC also adopted a Mitigation, Monitoring, Compliance and Reporting Program (MMCRP) to ensure compliance with all mitigation measures imposed on the Sunrise Powerlink Project during implementation. The CPUC voted on December 18, 2008 to approve the Final Environmentally Superior Southern Route ([Decision D.08-12-058](#)) and a [Notice of Determination](#) was submitted to the State Clearinghouse (SCH#2006091071). The BLM issued a [Record of Decision](#) approving the same route on January 20, 2009. The Project also crosses lands under jurisdiction of the U.S. Department of Agriculture; and Forest Service on the Cleveland National Forest; the Forest Service issued its Record of Decision and Supplemental Information report on July 9, 2010. The area requested under this NTP does not fall under Forest Service jurisdiction.

The Sunrise Powerlink Project will be constructed in 26 segments, as defined on the CPUC's project website (<http://www.cpuc.ca.gov/Environment/info/aspen/sunrise/sunrise.htm>). It is anticipated that, even within the 26 project segments, SDG&E will submit multiple separate requests for Notice to Proceed (NTPs) during the construction process. This is a typical process for transmission line projects. Given that the Sunrise Powerlink Project has been approved by the CPUC, BLM, and Forest Service, as described above, this segmented construction review process allows SDG&E to proceed with individual project components where compliance with all applicable mitigation measures and conditions can be documented.

This letter and the attached Compliance Status Table document the CPUC's thorough evaluation of all activities covered in this NTP. The evaluation process ensures that all mitigation measures and Biological Opinion conditions applicable to the location and activities covered in the NTP are implemented, as required in the CPUC's Decision and in BLM's Record of Decision.

NTP # 10 for Link 4, 230 kV Underground Transmission Line, is granted by CPUC for the proposed activities based on the factors described below.

SDG&E NTP Request. Excerpts from the October 7, 2010 SDG&E NTP request are presented below with CPUC clarifications based on discussions and/or correspondence with SDG&E inserted **(in parenthesis and in bold)**:

SDG&E is proposing to begin construction on Link 4, 230 kV Underground Transmission Line, located in San Diego County within the community of Alpine in California. Link 4 of the Sunrise Powerlink Project consists of approximately 6.2 miles of two double circuit 230 kV transmission lines bifurcating the 230 kV overhead, Link 5, portion of the alignment between mileposts 98.2 and 92.

The underground alignment begins with two new double circuit transition cable poles. The transition cable poles provide the necessary structure to mechanically terminate the overhead conductors of the eastern end of the 230 kV portion of Link 5 and support the underground cable terminators required for each underground cable. The alignment traverses along private property and continues west along Alpine Boulevard. An existing dirt private driveway will be extended to just south of the two transition poles on the east end of the underground construction. The route continues west of Peutz Valley Road and Alpine Boulevard. From this location the alignment travels north under Interstate 8 onto private property where it will transition overhead onto two new double circuit transition cable poles on private property. On the western end of the underground section, an existing unpaved road will be upgraded to provide access to the western transition cable poles. This access road will remain after construction to provide access to SDG&E structures during the operation phase of the project. The underground construction will be supported by the Alpine Construction Yard 18, submitted under separate cover and approved as NTP #3.

Construction activities for Link 4 include construction of the transition structures, installation of the underground facilities and upgrades to existing access roads as shown on pages MS-110 through MS-117 of the April 30, 2010 PMR Map Book submitted on May 14, 2010. Stringing activities associated with the transition structures will be conducted during construction of Link 5 under a separate NTP.

With the exception of the conditions outlined within this letter, all preconstruction measures have been met for Link 4. All other required mitigation measures, as stated in the Mitigation Monitoring, Compliance, and Reporting Program (MMCRP), will be implemented immediately prior to and during construction.

A project specific Fire Prevention and Response Plan (FPRP) was acknowledged* by CAL Fire Chief (the plan has been CPUC approved). A project Fire Marshall has been hired onto the project and is assigned to enforce the FPRP. (*In regard to the FPRP the Cal Fire Chief provided "The signatory reviewing officials are acknowledging that SDG&E has a Construction Fire Prevention Plan that is appropriate and necessary to mitigate fire hazard and risk for the SRPL construction and maintenance activities. They do not accept any responsibility for SDG&E interpretation or implementation of this Plan during the construction and maintenance of the SRPL or for any resulting actions associated with these activities.")

CPUC Evaluation of Mitigation Implementation

All applicable project mitigation measures, APMs, compliance plans, and permit conditions shall be implemented. Some measures have on-going/time-sensitive requirements and are required to be implemented prior to and during construction where applicable. For biological, cultural and paleontological resources, environmental site assessments, and existing underground utilities those additional conditions are defined in this section.

Please see also the attached Compliance Status Table documenting pre-construction requirements identified in the Final EIR/EIS. Note that entries shaded in yellow are outstanding and must be completed prior to the start of construction. Entries shaded in purple are to be conducted during construction. Entries shaded in green have been fulfilled. Entries that have not been shaded are not applicable to this Link.

Following the discussion of biological, cultural, and paleontological resources, environmental site assessments, and existing underground utilities, a list of bulleted conditions is presented to define additional information and clarifications regarding outstanding requirements. In some cases, these items exceed the requirements of the Mitigation Measures and Applicant Proposed Measures, and are based on specific site conditions and/or are proposed conditions by SDG&E. In these cases, the conditions will not also appear in the Compliance Status Table.

Biological Resources. This section presents background on outstanding biological resource requirements that occur at or near the site. Please note that the attached table provides greater detail in regard to specific biological resources. This summary of biological issues was provided by SDG&E in the NTP request. The CPUC biological consultant conducted reviews of the initial NTP request and follow-up materials for completeness and compliance with Project mitigation requirements.

No impacts will occur to sensitive vegetation, including tree trimming, until the following plans and reports have been approved by the CPUC and applicable resource agencies as defined by the mitigation measures:

- Habitat Mitigation and Monitoring Plan (for jurisdictional areas), Habitat Mitigation Plan and Habitat Acquisition Plan (MM B-1a, B-2a, B-7e, B-7j, B-7l, G-CM-17, G-CM-45). Under resource agency review.
- Restoration Plan for Sensitive Vegetation Communities in Temporary Impact Areas, submitted September 24, 2010 (MM B-1a); CPUC approved the Restoration Plan on November 3, 2010. Resource agency approvals and final plan revisions are pending.

SDG&E anticipates that these plans and reports will be approved by the California Department of Fish and Game (CDFG) and U.S. Fish and Wildlife Service (USFWS) shortly.

SDG&E has also submitted the required permit applications for work in jurisdictional areas, including a CDFG Streambed Alteration Agreement, Army Corps of Engineers (ACOE) Section 404 Nationwide Permit 12, and the Regional Water Quality Control Board (RWQCB) Section 401 Water Quality Certification. The RWQCB Section 401 Water Quality Certification was issued on November 9, 2010. No work will occur within CDFG or ACOE jurisdiction until the appropriate permits are obtained, in accordance with Mitigation Measures B-2a and WQ-APM-15.

The U.S. Fish and Wildlife Service issued the Reinitiated Biological Opinion (BO) on November 10, 2010. All revised conditions of the BO will be monitored by the CPUC's construction monitoring staff.

The majority of the work along Link 4 occurs within paved areas along Alpine Boulevard. Work activities will be restricted to these paved areas until the above mentioned approvals/permits are obtained. As noted above, tree trimming required at various locations along Alpine Boulevard will not be allowed until approvals are received.

Survey results shall be submitted to the USFWS, CDFG, and CPUC prior to construction.

Cultural Resources. The Final Inventory Report of the Cultural Resources was accepted on June 2, 2010. All known cultural resources identified within the Area of Potential Effect (APE) for Link 4 will be avoided. Furthermore, mitigation measures set forth in the Final Historic Properties Management Plan

(HPMP) for the Sunrise Powerlink Project, approved on July 15, 2010, will be implemented during construction as required.

Alpine Boulevard is included within the Old Highway 80 alignment, of which portions are considered historic. Per Mitigation Measure C-01g, Cultural Monitors are not required to observe removal of the Alpine Boulevard portion (Link 4 alignment) of Old Highway 80, since this portion of Old Highway 80 was determined to retain poor integrity and was recommended as a noncontributing element to Highway 80's eligibility for listing. However, concerns were expressed by members of the Alpine historical society that historical buildings might be impacted by vibration during the excavation of the utility trench within Alpine Boulevard. The following measures have been or shall be implemented to address the noted concerns:

- Pre-construction photographs and documentation of 36 structures along Alpine Boulevard took place on March 31, 2010.
- In April 2010, the segment of Alpine Boulevard within Link 4 was subjected to a study which analyzed a worst case ground motion condition to the structures under examination. The findings revealed three structures (Alpine Women's Club, 2156 Alpine Boulevard; Holy Rollers Bikes and Boards Shop and Alpine Barber Shop, 2206 and 2210 Alpine Boulevard; and Stone Pillars and Wall with Iron Gate, 2300 Alpine Boulevard) with a poor expected load resistance and substandard foundation design that should be monitored more closely.
- Pre- and post-construction photo documentation is required for these structures, as well as onsite ground motion monitoring (either with a seismometer or seismograph) during active construction within 150-feet of the above-mentioned structures. These structures shall also have lateral and transverse extensometers installed on parallel and perpendicular retaining and footing structures during construction to record any position change.

Additionally, Mitigation Measure C-03a requires implementation of archaeological monitoring. Archaeological and Native American monitors will be on-site during subsurface construction disturbance at all locations identified as sensitive for buried archaeological deposits. The Historic Properties Management Plan, approved by the CPUC and BLM on July 15, 2010, states that monitoring will be at highly sensitive areas defined during Buried Site Testing (BST). It also states that if BST is not feasible in areas classified as high sensitivity for buried sites, those areas will be monitored during ground-disturbing construction activities. The Buried Site Sensitivity Model and Testing Plan has not been finalized. Therefore, the following areas determined to be of high sensitivity for buried sites must be monitored by both a qualified archaeologist and Native American monitor:

- From the corner of Alpine Boulevard and Star Valley Road, west to the corner of Alpine Boulevard and Willows Road overpass (between MP-92 and MP-93).
- From the corner of Alpine Boulevard and Vista Alpine Road, west to the corner of Alpine Boulevard and Boulders Road (within MP-95).
- From MP-96 west to MP-97.

Paleontological Resources. Based on the Final Paleontological Monitoring and Discovery Treatment Plan, accepted on June 17, 2010, there is no potential to encounter paleontological resources within Segment 15. The conditions of the Plan shall be implemented during construction.

Environmental Site Assessment: A Phase I Environmental Site Assessment (ESA) was submitted to the CPUC for review and approval on August 28, 2009. As outlined in the September 30, 2009 CPUC review memorandum: "The ESA identified six known environmental cleanup sites adjacent to the planned underground construction for the 220kV duct bank through Alpine. In addition to field monitoring for impacted soils during construction, the ESA indicates a contingency plan and a site-specific health and safety plan will be prepared to outline procedures to characterize contaminated soil and properly handle and dispose of any impacted soils that may be encountered."

SDG&E's response to CPUC comments on the ESA was submitted December 16, 2009. Therein SDG&E provided that a Sampling and Testing Plan, as well as a Hazardous Waste Contingency Plan and Health and Safety Plan would be provided. In response to the above commitments, a Soil Management Plan was submitted which was reviewed and approved September 9, 2010. The CPUC approval was contingent on receipt of a copy of a site-specific Health and Safety Plan and for the CPUC Environmental Monitor to attend the pre-construction safety meeting for the proposed Alpine Boulevard underground segment. The Soil Management Plan provided the following procedures which shall be implemented during trenching activities in the identified zones along Alpine Boulevard:

- **Visual Monitoring:** The SDG&E monitor will conduct continuous visual monitoring during trenching activities within the identified zones. Visual observation will identify stained or discolored soil which may indicate a previous release of hydrocarbons to the subsurface. The presence of odorous soil will also be noted as an indication of potential hydrocarbon impacts. Soils with visible indications of impacts will be segregated for characterization prior to disposal. Monitoring observations will be recorded in a field notebook and locations of visually impacted soil will be noted.
- **Air Monitoring:** A photoionization detector (PID) will be used by the SDG&E monitor to continuously monitor ambient air in the work zone during trenching. In addition to the continuous monitoring for worker health and safety purposes, air monitoring will be used to identify soils to be segregated for characterization prior to disposal. The results of the air monitoring will be recorded in the daily field sheets.

Field screening of soil samples for petroleum hydrocarbons (if suspected) will be conducted by the SDG&E monitor using a PID and the head-space screening method. Approximately 2 to 4 ounces of soil will be placed in a sealed plastic bag, shaken gently, and allowed to equilibrate for approximately 3 minutes before inserting the PID probe to collect a headspace reading. Where visual staining is observed or odors are noted, more frequent field screening will be performed at the discretion of the SDG&E monitor. The screening level for considering soil impacted with petroleum hydrocarbons will be 50 parts per million (ppm) as measured by a PID. Soil identified with PID readings exceeding 50 ppm will be segregated for characterization prior to disposal. The identification and segregation of soil potentially impacted by other contaminants which cannot be determined with the PID will be done at the discretion of the onsite SDG&E monitor. Monitoring observations will be recorded in a field notebook, and locations and concentrations of head-space readings will be noted.

Existing Underground Utilities: On October 8, 2010 SDG&E submitted a memoranda documenting that they have coordinated with utility providers having underground facilities located along Alpine Boulevard. They provided that construction techniques which have been successful on many electric underground projects in the past will be utilized on this project. Additionally, Underground Service Alert

will be notified a minimum of 48-hours in advance of activities in order to identify any subsurface utility lines.

The Final 230kV Underground Construction Plans were reviewed by CPUC engineers and approved November 4, 2010, with the statement that all underground facilities have been accounted for and noted in the plans.

Conditions of NTP Approval

The conditions presented below shall be met by SDG&E and its contractors:

1. All applicable project mitigation measures, APMs, compliance plans, and permit conditions shall be implemented. Some measures have on-going/time-sensitive requirements and shall be implemented prior to and during construction where applicable. Please see the attached table of pre-construction mitigation measure requirements. Note that entries shaded in yellow are outstanding and shall be completed prior to the start of construction. Purple entries shall be conducted during construction. Green entries have been fulfilled. Entries that are not shaded are not applicable to this Link. Bulleted items can be found below which provide additional information and clarifications to outstanding requirements.
2. Copies of all relevant permits, compliance plans, and this Notice to Proceed shall be available on site for the duration of construction activities.
3. All sensitive receptors and residences will be notified at least 15 days prior to initiating construction and verification will be submitted to the CPUC as per the Construction Notification Plan approved on March 1, 2010. The notice recipient list has been verified by CPUC.
4. No impacts will occur to sensitive vegetation, including tree trimming, until the following plans and reports have been approved by the CPUC and applicable resource agencies as specified by the mitigation measures (see Biological Resources above): Habitat Mitigation and Monitoring Plan (for jurisdictional areas); Habitat Mitigation Plan and Habitat Acquisition Plan; and the Restoration Plan for Sensitive Vegetation Communities in Temporary Impact Areas. Please see attached map for exclusion areas.
5. No work will occur within CDFG or ACOE jurisdictions until the appropriate permits are obtained.
6. All sensitive resource buffers shall be flagged prior to construction/site occupation. Resource flagging shall be field verified by the CPUC EM prior to site use.
7. All construction areas and access roads identified in the NTP request submitted by SDG&E shall be flagged prior to construction. Flagging of construction areas and access roads shall be field verified by the CPUC EM prior to site use.
8. In compliance with Mitigation Measure B-8a, pre-construction surveys for nesting birds within 100 feet of the construction zone within 10 calendar days prior to the initiation of construction shall occur between January 15 and August 15. In addition, nesting surveys for listed species including raptors shall be conducted within 500 feet of the construction zone within 10 days prior to the initiation of construction shall occur between January 1 and September 15.
9. "Survey sweeps" will occur immediately preceding and during active construction as part of required biological monitoring activities. If active nests are found, a biological monitor shall establish an appropriate buffer around the nest and no activities will be allowed within the buffer until the young have fledged from the nest or the nest fails. The biological monitor shall conduct regular

monitoring of the nest to determine success/failure and to ensure that project activities are not conducted within the buffer until the nesting cycle is complete or the nest fails. The biological monitor shall be responsible for documenting the results of the surveys and the ongoing monitoring. The buffer may be adjusted with the approval of CDFG and USFWS, and with prior knowledge of the CPUC.

10. Pre- and post-construction photo documentation is required for the following locations: 1) Alpine Women's Club, 2156 Alpine Boulevard; 2) Holy Rollers Bikes and Boards Shop and Alpine Barber Shop, 2206 and 2210 Alpine Boulevard; and 3) Stone Pillars and Wall with Iron Gate, 2300 Alpine Boulevard. In addition, onsite ground motion monitoring (either with a seismometer or seismograph) shall be conducted during active construction within 150-feet of the noted structures. These structures shall also have lateral and transverse extensometers installed on parallel and perpendicular retaining and footing structures during construction to record any position change.
11. Archaeological and Native American monitors shall be on-site during subsurface construction disturbance at all locations identified as sensitive for buried archaeological deposits (see above).
12. All crew members shall be Safe Worker and Environmental Awareness Program (SWEAP) trained prior to working on the project. A log shall be maintained on-site with the names of all crew personnel trained. For any crew members with limited English, a translator shall be on-site to ensure understanding of the training program. In place of a translator, the SWEAP training brochure can be provided in Spanish or other languages as appropriate. All participants will receive a hard-hat sticker for ease of compliance verification.
13. Wildlife found to be trapped will be removed by a qualified biological monitor. If the biological resource monitor is not qualified to remove the entrapped wildlife, a recognized wildlife rescue agency (such as Project Wildlife) will be contacted to remove the wildlife and transport it safely to other suitable habitats.
14. As provided in the request, construction work will be conducted between the hours of 7:00 a.m. to 7:00 p.m. In the event that work needs to take place outside of these hours, a variance shall be obtained from the appropriate jurisdictional agencies and the CPUC. SDG&E shall employ noise suppression techniques as necessary.
15. SDG&E shall notify and provide required information to emergency service providers and San Diego County prior to initiation of construction activities that could impact police, fire, ambulance and paramedic services. The Traffic Control Permit was issued by the County of San Diego (Permit No. 0910-77) on September 17, 2010 and addresses emergency vehicle access. This permit was submitted to the CPUC on September 24, 2010, and shall be implemented on Link 4 during construction, as required. Verification of notifications shall be submitted to the CPUC.
16. The provisions of the Soil Management Plan shall be implemented during construction. The submitted site-specific Health and Safety Plan shall be approved by CPUC prior to construction. The CPUC Environmental Monitor shall be notified of and attend the pre-construction safety meeting for the proposed Alpine Boulevard underground segment.
17. As proposed, the SDG&E Environmental Monitoring Program shall be implemented during construction which will include implementation of the applicable environmental plans (as defined in HS-APM-1, HS-APM-2, HS-APM 3, HS-APM-8 and HS-APM-10). SDG&E has designated an Environmental Field Representative for Link 4 construction. The Representative will be on site to observe and document adherence to the applicable environmental plans.

18. In regard to the Hazard Communication Plan, to fully satisfy the intent of mitigation measure P-1a, documentation of training for personnel who would be working near or handling hazardous materials shall be submitted to the CPUC for review after completion of these training activities.
19. If construction debris or spills enter into environmentally sensitive areas, appropriate jurisdictional agencies and the CPUC Environmental Monitor shall be notified immediately.
20. No movement or staging of construction vehicles or equipment shall be allowed outside of the approved areas. If additional temporary workspace areas or access routes or changes in technique and mitigation implementation to a lesser level are required, a Variance Request shall be submitted for CPUC review.
21. No clearing or disturbance to vegetation shall occur outside of approved work areas.
22. No ground disturbance shall occur outside of approved work areas.
23. If the application of water is needed to abate dust in construction areas and on dirt roads, SDG&E shall use the least amount needed to meet safety and air quality standards and prevent the formation of puddles, which could attract wildlife to construction sites (as requested by USFWS). Conditions of the Dust Control Plan will be implemented and enforced throughout Link 4 construction activities.
24. A NPDES storm water discharge permit for construction activities and Storm Water Pollution Prevention Plan (SWPPP) has been obtained for the Link 4 work. The SWPPP shall be implemented where appropriate prior to and during construction.
25. Underground Service Alert will be notified a minimum of 48-hours in advance of activities in order to identify any subsurface utility lines.
26. When significant precipitation events are anticipated, or have occurred, access on project roads may be suspended in order to maintain the integrity of access roads and provide for personnel safety. Access will be suspended for 24 hours following a rain event in order to allow for a dry out period. The parameters for suspending access include, but are not limited to:
 - a. Rutting occurring in excess of 2 inches over a distance of 50 feet
 - b. Rutting and/or soil mixing occurring on 10% of the road
 - c. Rills more than 10 feet in length develop
 - d. Significant soil compaction
 - e. Significant soil adhesion to vehicles and construction equipment
27. As provided in the NTP request, blasting is not anticipated along Link 4. If blasting does need to occur, SDG&E shall prepare a site specific blasting plan to be submitted for review and approval by the CPUC.
28. All temporary facilities (i.e., portable toilets, fencing, etc.) shall be removed from the construction disturbance area at the completion of construction.
29. All complaints received by SDG&E in regard to Link 4 shall be logged and reported immediately to the CPUC. This includes complaints relevant to lighting, noise and dust, etc. Complaints should also be forwarded immediately to San Diego County. If complaints cannot be resolved, activities may need to be modified depending on the nature of the complaint.

30. Per the mitigation measures (B-01a, LU-APM-6), limits of construction and environmentally sensitive areas will be delineated with orange construction fencing or flagging prior to the start of construction to alert construction personnel that those areas should be avoided.

Please contact me if you have any questions or concerns.

Sincerely,

Billie Blanchard

Billie Blanchard
CPUC Environmental Project Manager
Sunrise Powerlink Transmission Project

cc: Ken Lewis, CPUC Program Manager
Nicholas Sher, CPUC Legal Division
Daniel Steward, BLM El Centro Field Office
Tom Zale, BLM El Centro Field Office
Susan Lee, Aspen Environmental Group
Vida Strong, Aspen Environmental Group
Anne Coronado, Aspen Environmental Group
Hedy Koczwara, Aspen Environmental Group
Don Haines, San Diego Gas and Electric Company
Tina Carter, San Diego Gas and Electric Company
Robert Hawkins, U.S. Forest Service
Michael Bennett, BLM Palm Spring South Coast Field Office
Cliff Harvey, State Water Resources Control Board
Eric Porter, USFWS
Doreen Stadtlander, USFWS
Paul Schlitt, CDFG
Heather Pert, CDFG
Kelly Fisher, CDFG
Erin Wilson, CDFG

Attachment A: Preconstruction Status Report

Friday, November 19, 2010

3:05:02 PM

Report Criteria:

AGENCY: CPUC

LOCATION: Link 4

TIMING: Design; During; During and Post; Pre; Pre and During; Pre and Post; Pre, During, and Post

 -To Be Implemented During Construction

 -Complete

 -Pending OR To Be Implemented Immediately Prior to Construction

 -Not Applicable

Note: This table contains U.S. Fish and Wildlife Service Conservation Measures in addition to the mitigation measures and applicant proposed mitigation measures (APMs) from the Final EIS/EIR. The conservation measures are denoted in the table as G-CM-# or SS-G-#.

The mitigation measure and APM numbers listed in this table reference the actual measures in the MMCRP. The text after the measure number provides a summary of specific tasks within each measure, but is not intended to provide the entire language contained within the MMCRP. Please note that several measures include multiple entries in this table. These multiple entries break out the various requirements or tasks contained within that measure. Please reference the MMCRP for the actual requirements for each measure or visit www.cpuc.ca.gov/Environment/info/asp/en/sunrise.

Mitigation Measure and APM	Status
B-01a: Locate surface disturbing components in previously disturbed areas	The pre-construction portion of this measure is complete. Sensitive resources were mapped using GIS and project structures and work areas were designed to avoid these resources, to the extent possible. The Project Modification Report Mapbook submitted on May 14, 2010 and approved by the CPUC and BLM through a Determination Memorandum on September 22, 2010, shows both sensitive resources and the location of areas that may be disturbed. During construction, vegetation and soil impacts will be minimized.
B-01a: Use construction mats to minimize disturbance	This mitigation measure will be fulfilled during construction.
B-01a: Double mitigation ratios on lands already in mitigation	The Link 4 right-of-way and associated work areas are not located on lands already in mitigation for other projects; therefore, this portion of the mitigation measure is not applicable.
B-01a: Delineate all limits of construction	The limits of construction will be delineated with orange construction fencing or flagging prior to the start of construction.
B-01a: Coordinate gate installation 60 days prior to construction	Link 4 access roads will be located on private driveways. One gate replacement will be required on Link 4. The gate replacement will occur on the Loritz property. SDG&E has coordinated with the landowner for replacement of the gate and a landowner agreement was signed April 17, 2010. This landowner coordination was summarized in the L-2b Memorandum submitted to the CPUC on October 5, 2010 and approved by the CPUC on October 12, 2010. No new gate installation will occur on public access roads.
B-01a: Submit documentation of coordination with the administering agency of the road/trail 30 days prior to construction	Link 4 access roads will be located on private driveways. One gate replacement will be required on Link 4. The gate replacement will occur on the Loritz property. SDG&E has coordinated with the landowner for replacement of a gate and a landowner agreement was signed April 17, 2010. This landowner coordination was summarized in the L-2b Memorandum submitted to the CPUC on October 5, 2010 and approved by the CPUC on October 12, 2010. No new gate installation will occur on public access roads.
B-01a: Post signs on access road gates prohibiting unauthorized users	Link 4 access roads will be located on private driveways. One gate replacement will be required on Link 4. The gate replacement will occur on the Loritz property. SDG&E has coordinated with the landowner for replacement of a gate and a landowner agreement was signed April 17, 2010. This landowner coordination was summarized in the L-2b Memorandum submitted to the CPUC on October 5, 2010 and approved by the CPUC on October 12, 2010. No new gate installation will occur on public access roads.
B-01a: Provide funding for off-road vehicle patrols	This mitigation measure is not applicable to Link 4. Off-Highway Vehicle Recreational Areas are not located along Link 4 (Alpine Boulevard and associated private lands).

Mitigation Measure and APM	Status
B-01a: Mitigate for impacts by unauthorized activity (e.g., exceeding approved construction footprints)	This mitigation measure will be fulfilled during construction.
B-01a: Submit a Habitat Restoration Plan	SDG&E prepared the Restoration Plan for Sensitive Vegetation Communities in Temporary Impact Areas to address restoration of temporarily impacted areas. This plan was submitted to the CPUC, BLM, USFS and wildlife agencies for review and approval on September 24, 2010. A revised plan was submitted on October 25, 2010, and the CPUC approved the plan on November 3, 2010. SDG&E will not impact sensitive vegetation communities prior to approval of this plan from the wildlife agencies.
B-01a: Mitigate for impacted habitat	In coordination with the appropriate agencies, off-site purchase and dedication of habitat shall be provided for areas where habitat restoration cannot meet mitigation requirements as outlined in this measure. This will be determined during and post construction during restoration activities.
B-01a: Mitigate for the loss of native trees and tree trimming	Mitigation for loss of native trees or tree trimming will be provided as outlined in this measure. The Habitat Acquisition Plan/Habitat Management Plan, which was submitted on September 22, 2010 to the CPUC, BLM, Wildlife Agencies, and USDA Forest Service for review and approval, covers all impacts related to trees resulting from construction activities. The CPUC and Wildlife Agencies have agreed that conservation of woodland areas on mitigation lands included in the HAP/HMP is acceptable mitigation for impacts to native trees.
B-01a: Submit a Habitat Acquisition Plan 120 days prior to construction	The Habitat Acquisition Plan was submitted for review and approval on February 4, 2010. The HAP was further refined and provided to the CPUC on September 22, 2010. The plan includes the requirements as outlined in this mitigation measure.
B-01a: Submit a Habitat Management Plan	The Habitat Management Plan, prepared by a qualified biologist, was submitted to the CPUC, BLM, Wildlife Agencies, and USDA Forest Service on September 22, 2010 for review and approval.
B-01a: Include legal descriptions of all legal parcels	The HMP, prepared by a qualified biologist, was submitted to the CPUC, BLM, Wildlife Agencies, and USDA Forest Service on September 22, 2010 for review and approval. All the components in this mitigation measure have been included in the HMP.
B-01c: Provide biological monitoring and perform periodic inspections once or twice a week	A qualified biological monitor with the authority to issue stop work orders will be on-site during construction activities and weekly monitoring reports will be prepared. This mitigation measure will be fulfilled during construction.
B-01c: Send weekly monitoring reports	A qualified biological monitor with the authority to issue stop work orders will be on-site during construction activities and weekly monitoring reports will be prepared. This mitigation measure will be fulfilled during construction.
B-01c: Qualified biologists shall handle all environmental issues and have the authority to issue stop work orders	A qualified biological monitor with the authority to issue stop work orders will be on-site during construction activities and weekly monitoring reports will be prepared. This mitigation measure will be fulfilled during construction.
B-01k: Re-seed all public and private natural areas burned due to project-caused fire	This mitigation measure shall be fulfilled during or post construction should a fire occur and found to be caused by the project.
B-01k: Develop re-seeding plan	This mitigation measure shall be fulfilled during or post construction should a fire occur and found to be caused by the project.
B-02a: Avoid impacts to jurisdictional areas	Impacts to jurisdictional features were considered during the design of the project and have been avoided, to the extent feasible. The location of each jurisdictional drainage and potential impact was described in the Preliminary Jurisdictional Determination report that was approved by the Army Corps of Engineers.
B-02a: Mitigate impacted areas as required by wetland permitting	Where avoidance of jurisdictional areas is not feasible, SDG&E shall provide the necessary mitigation required as part of wetland permitting as outlined in this measure. SDG&E submitted a Habitat Mitigation and Monitoring Plan (HMMP) on July 14, 2010 and a revision to the HMMP on October 7, 2010. The HMMP has been accepted by the ACOE, CDFG and SWRCB in concept, the agencies have asked that the report be reformatted to break out each mitigation property separately.

Mitigation Measure and APM	Status
B-02a: Prepare jurisdictional delineation and impact assessment	The entire project area was surveyed and impacts to resources under the jurisdiction of the ACOE, Regional Water Boards, State Water Board, and CDFG were determined. Project components were relocated to the extent feasible to minimize impacts. Where impacts were unavoidable, SDG&E prepared and submitted permit applications to the appropriate agencies. Jurisdictional areas are shown in the individual permit applications. Final Construction Design Plans were submitted to the CPUC on June 8, 2010.
B-02a: Mitigate for jurisdictional wetland habitat	SDG&E will not impact jurisdictional areas prior to acquiring the required permits for work in jurisdictional areas. SDG&E submitted a HMMP on July 14, 2010 and a revision to the HMMP on October 7, 2010.
B-02a: Obtain wetland permits prior to construction	Wetland permit applications were submitted for review and approval on March 30, 2010 and updates were submitted on August 23, 2010.
B-02a: Delineate all limits of construction	The April 30, 2010 Mapbook submitted on May 14, 2010 and approved by the CPUC and BLM through a Determination Memorandum on September 22, 2010 illustrates the limits of construction. Limits of construction will be delineated immediately prior to construction with orange construction fencing, flagging or silt fencing prior to construction.
B-02a: Install gates and signs at entrances of access roads	This mitigation measure is not applicable to Link 4. No new gate installation will occur on public access roads. New access roads will be located on private driveways.
B-02a: Mitigate impacts from unauthorized activity	This mitigation measure will be fulfilled during construction.
B-02a: Submit and implement Wetland Mitigation Plan	SDG&E prepared and submitted an HMMP on July 14, 2010 as outlined in this mitigation measure. This plan was revised and provided to the agencies on October 7, 2010. This plan was prepared by WRA, a qualified habitat restoration specialist. This plan will be implemented by a qualified habitat restoration specialist.
B-02a: Submit a Habitat Management Plan that includes jurisdictional areas	SDG&E submitted a HMMP on July 14, 2010 and a revised HMMP on October 7, 2010 that describes preservation and management of all acquired, offsite mitigation parcels as outlined in this mitigation measure. SDG&E will not impact jurisdictional habitat until the HMMP is approved.
B-03a: Submit and implement a Weed Control Plan	A Final Weed Control Plan was approved by the BLM and CPUC on September 8, 2010. Additional comments from the USFWS, City of San Diego and USFS were incorporated into a final plan that was submitted to all agencies on November 10, 2010.
B-03a: Conduct pre-construction weed inventory	The Weed Control Plan, which includes elements as outlined in this mitigation measure, was approved on September 8, 2010. Pre-construction weed inventories were performed in 2009 and 2010.
B-03a: Implement weed control treatments	This mitigation measure will be fulfilled during construction.
B-03a: Annually survey for new invasive weeds for 2 years	The Weed Control Plan addresses surveying for invasive exotic species during construction and annually following construction to monitor previously-identified and treated populations and to identify new invasive weed populations for the life of the Project. Treatment of weeds will occur on a minimum annual basis unless otherwise approved by the PCA, San Diego County Agricultural Commissioner, and Cal-IPC. This mitigation measure will be fulfilled during/post construction.
B-03a: Ensure all seeds and other material are certified weed free	This mitigation measure will be fulfilled during construction.
B-03a: Wash vehicles and equipment	This mitigation measure will be fulfilled during construction. The closest designated wash station is located at the Alpine Construction Yard.
B-03a: Submit monthly wash logs during construction and annual logs during operation/maintenance	This mitigation measure will be fulfilled during construction.
B-05a: Conduct surveys in the spring and submit a special status plant report	Rare Plant Surveys were completed by a qualified biologist in 2009 and 2010 along Link 4. The 2009 survey report was submitted to the CPUC for review, as outlined in this measure, on November 9, 2009 and found adequate in a memo from the CPUC dated August 26, 2010. Information from the 2010 rare plant survey was provided to the CPUC on October 28, 2010. No rare plants were identified in the 2009 or 2010 surveys that would be impacted by construction activities along Link 4.
B-05a: Stake or flag special status plant populations	Based on the rare plant surveys conducted in 2009 and 2010, no rare plants were identified along Link 4. If special status plant populations are identified during construction, they will be staked or flagged by a qualified biologist.

Mitigation Measure and APM	Status
B-05a: Avoid impacts to federal and state listed plant species	Impacts to federal or State listed species have been avoided. Rare Plant Surveys were completed by a qualified biologist in 2009 and 2010 along Link 4. The 2009 survey report was submitted to the CPUC for review, as outlined in this measure, on November 9, 2009 and found adequate in a memo from the CPUC dated August 26, 2010. Information from the 2010 rare plant survey was provided to the CPUC on October 28, 2010. No rare plants were identified in the 2009 or 2010 surveys that would be impacted by construction activities along Link 4.
B-05a: Submit a Restoration Plan for federal and state listed plants	No federal or state listed plants have been identified on Link 4; therefore, a restoration plan is not required and this mitigation measure is not applicable.
B-05a: Avoid impacts to moderately sensitive plant species	Impacts to moderately sensitive plant species have been avoided. Rare Plant Surveys were completed by a qualified biologist in 2009 and 2010 along Link 4. The 2009 survey report was submitted to the CPUC for review, as outlined in this measure, on November 9, 2009 and found adequate in a memo from the CPUC dated August 26, 2010. Information from the 2010 rare plant survey was provided to the CPUC on October 28, 2010. No moderately sensitive plant species were identified in the 2009 or 2010 surveys that would be impacted by construction activities along Link 4.
B-05a: Submit a Restoration Plan for special status plant species	Reseeding and salvage are not required on Link 4. No rare plants were observed during the 2009 or 2010 rare plant surveys on Link 4. No impacts to special status plant species will occur on Link 4; therefore this mitigation measure is not applicable.
B-05a: Submit a Habitat Management Plan that addresses offsite mitigation for rare plants	Since there are no rare plants on Link 4, offsite mitigation is not required and this mitigation measure is not applicable.
B-07a: Cover excavations or install fencing when not in use	Steep-walled trenches or excavations will be covered, fencing will be installed or sloped on one end (i.e., ramped) to prevent the entrapment of wildlife during construction. This mitigation measure will be fulfilled during construction.
B-07a: Inspect excavations 3 times per day and before backfilling	A qualified biological monitor will inspect any open trenches as required. This mitigation measure will be fulfilled during construction.
B-07a: Look under vehicles and equipment before moving for presence of wildlife	Workers will be instructed to look under vehicles for wildlife before movement and to report mortality or injury of a listed species within 48 hours. No vehicles or equipment will be moved until the animal has left or is removed by a qualified biologist. This mitigation measure will be fulfilled during construction.
B-07a: Contact within 48 hours of finding a dead or injured listed species	A qualified biological monitor will submit monitoring reports as required by this measure. This mitigation measure will be fulfilled during construction.
B-07e: Conduct grading or brushing outside of least Bell's vireo and southwestern willow flycatcher breeding season September 16-March 14	The Riparian Birds Survey Report 2009 was submitted to the CPUC for review on January 14, 2010 and was approved by the CPUC on August 26, 2010. This measure will be implemented during construction.
B-07e: Survey for least Bells' vireo and southwestern willow flycatcher within 10 days prior to initiating work in area	<p>The Riparian Birds Survey Report 2009 was submitted to the CPUC for review on January 14, 2010 and approved by the CPUC on August 26, 2010. Least Bell's vireo occur near the Link 4 construction area, but will not be impacted by construction. No southwestern willow flycatcher occupied or designated critical habitat occurs in the Link 4 construction area. There will not be any impacts to occupied least Bell's vireo or southwestern willow flycatcher habitat on Link 4.</p> <p>A permitted biologist will conduct pre-construction surveys for least Bell's vireo and southwestern willow flycatcher within 10 calendar days prior to the initiation of construction that would occur between March 15 and September 15.</p>

Mitigation Measure and APM	Status
B-07e: Survey once per week if least Bell's vireo and/or southwestern willow flycatcher are present	<p>The Riparian Birds Survey Report 2009 was submitted to the CPUC for review on January 14, 2010 and approved by the CPUC on August 26, 2010. Least Bell's vireo occur near the Link 4 construction area, but will not be impacted by construction. No southwestern willow flycatcher occupied or designated critical habitat occurs in the Link 4 construction area. There will not be any impacts to occupied least Bell's vireo or southwestern willow flycatcher habitat on Link 4.</p> <p>A permitted biologist will conduct pre-construction surveys for least Bell's vireo and southwestern willow flycatcher within 10 calendar days prior to the initiation of construction that would occur between March 15 and September 15.</p> <p>This mitigation measure will be implemented during construction.</p>
B-07e: Establish 300-foot buffer if active nest found	This mitigation measure will be fulfilled during construction if an active nest is observed near construction activities.
B-07e: Monitor noise if construction occurs within buffer	This mitigation measure will be fulfilled during construction if least Bell's vireo or southwestern willow flycatcher are observed near construction activities.
B-07e: Provide mitigation for temporary and permanent impacts	The Riparian Birds Survey Report 2009 was submitted to the CPUC for review on January 14, 2010 and approved by the CPUC on August 26, 2010. Least Bell's vireo occur near the Link 4 construction area, but will not be impacted by construction. No southwestern willow flycatcher occupied or designated critical habitat occurs in the Link 4 construction area. There will not be any impacts to occupied least Bell's vireo or southwestern willow flycatcher habitat on Link 4; therefore, offsite mitigation is not required and this portion of the mitigation measure is not applicable.
B-07e: Submit a Habitat Management Plan that addresses impacts to least Bell's vireo and southwestern willow flycatcher	Least Bell's vireo occur near the Link 4 construction area, but will not be impacted by construction. No southwestern willow flycatcher occupied or designated critical habitat occurs in the Link 4 construction area. There will not be any impacts to occupied least Bell's vireo or southwestern willow flycatcher habitat on Link 4; therefore, this portion of this mitigation measure is not applicable.
B-07h: No activities within 4,000 ft. of eagle nest during breeding season	This mitigation measure is not applicable to Link 4. Construction along Link 4 will not occur within 4,000 feet of an eagle nest.
B-07i: Determine suitable habitat areas of QCB	Per USFWS Quino checkerspot butterfly (QCB) protocol, site assessments for suitable QCB habitat were conducted in 2009 and 2010 by USFWS permitted biologists. The site assessments identified areas requiring protocol surveys. QCB protocol surveys were completed by a USFWS permitted biologist and a revised 2009 QCB Focused Survey Report was submitted to the CPUC for review January 14, 2010. Survey results indicate QCB were found by MP 116.5, 110, 79 to 80, 74.5, 71, and 36. Construction of Link 4 will occur between MP 98.2 and MP 92; suitable habitat for QCB does not occur in this area.
B-07i: Conduct pre-construction protocol survey for QCB	Per USFWS QCB protocol, site assessments for suitable QCB habitat were conducted in 2009 and 2010 by USFWS permitted biologists. The site assessments identified areas requiring protocol surveys. QCB protocol surveys were completed by a USFWS permitted biologist and a revised 2009 QCB Focused Survey Report was submitted to the CPUC for review January 14, 2010. Survey results indicate QCB were found by MP 116.5, 110, 79 to 80, 74.5, 71, and 36. Construction of Link 4 will occur between MP 98.2 and MP 92; no suitable QCB habitat was identified in this area.
B-07i: Mitigation required if survey non-conclusive for determining QCB presence	Per USFWS QCB protocol, site assessments for suitable QCB habitat were conducted in 2009 and 2010 by USFWS permitted biologists. The site assessments identified areas requiring protocol surveys. QCB protocol surveys were completed by a USFWS permitted biologist and a revised 2009 QCB Focused Survey Report was submitted to the CPUC for review January 14, 2010. Survey results were conclusive and QCB habitat was not identified on Link 4.
B-07i: Submit a Habitat Management Plan that addresses offsite mitigation for QCB habitat	Per USFWS QCB protocol, site assessments for suitable QCB habitat were conducted in 2009 and 2010 by USFWS permitted biologists. QCB habitat does not occur on Link 4; therefore, this mitigation measure is not applicable.
B-07j: Conduct pre-construction protocol survey for arroyo toad	USFWS protocol-level arroyo toad (ARTO) surveys were conducted in 2009 and 2010. The 2009 ARTO Survey Report was submitted to the CPUC on October 2, 2009 and re-submitted to CPUC on January 14, 2010 to address CPUC comments. The 2010 ARTO surveys are complete. The surveys were conducted along the two stream crossings across Alpine Boulevard between MP 98.2 and MP 92. No ARTO were found at these locations during the 2009 or 2010 surveys.

Mitigation Measure and APM	Status
B-07j: Remove toad riparian breeding habitat October-December	Arroyo toad habitat does occur adjacent to and in close proximity to Link 4, however, construction activities are not anticipated to require removal of any toad habitat. If it is later determined that toad habitat could potentially be impacted, this measure will be implemented as defined.
B-07j: Install exclusion fencing if toad is present and monitor daily during construction	If arroyo toads are observed during construction, exclusion fencing will be installed as outlined in this measure. Exclusion fencing will be monitored during construction and observations will be summarized and submitted to the CPUC in the weekly report.
B-07j: Conduct pre- and post-exclusion fencing surveys	Based on the results of the 2009 and 2010 ARTO surveys, ARTO are not expected to occur. If ARTO are observed during construction, clearance surveys will occur as outlined in this measure.
B-07j: Conduct daily surveys in the morning prior to work activities	If arroyo toad are observed on Link 4 during construction, a biological monitor will conduct daily clearance surveys.
B-07j: Mitigate for the loss of occupied arroyo toad habitat	Based on the 2009 and 2010 ARTO surveys, no occupied habitat occurs in Link 4; therefore, this portion of this mitigation measure is not applicable.
B-07j: Submit a Habitat Management Plan that includes arroyo toad habitat	A Habitat Management Plan was submitted to the appropriate agencies for review and approval on September 22, 2010. No impacts to unoccupied arroyo toad habitat will occur on Link 4 prior to approval of this plan.
B-07l: Conduct brushing or grading in occupied gnatcatcher habitat outside breeding season February 15-August 30	Marginal coastal California gnatcatcher habitat exists adjacent to the work area for the transition poles on the west end of Link 4. If an active nest is found adjacent to the work area and within 300 feet of construction activities, brushing or grading activities will be halted and a 300-foot buffer zone established.
B-07l: Conduct gnatcatcher survey within 10 days of initiating other activities in area and submit to agencies	Nesting surveys for coastal California gnatcatcher will be conducted by a qualified biologist within 10 days of construction. Results of the surveys will be submitted to Wildlife Agencies for review and approval.
B-07l: Establish 300-foot buffer if active nest found	Marginal coastal California gnatcatcher habitat exists adjacent to the work area for the transition poles on the west end of Link 4. Preconstruction surveys will be conducted within 10 days prior to construction to determine if the presence of nesting birds within 300 feet of a work area. If an active nest is found adjacent to the work area and within 300 feet of construction activities, construction will be halted and a 300-foot buffer zone established.
B-07l: Mitigate the loss of occupied habitat and unoccupied designated critical habitat	No occupied California gnatcatcher habitat occurs along Link 4. USFWS suitable habitat occurs north of the proposed alignment and work areas; however, this area will not be impacted by construction. Since there is no designated critical or occupied habitat along Link 4, this portion of this mitigation measure is not applicable.
B-07l: Submit a Habitat Management Plan that addresses the coastal California gnatcatcher and its habitat	A Habitat Management Plan was submitted to the appropriate agencies for review and approval on September 22, 2010. Since neither coastal California gnatcatchers or its habitat will be affected by construction activities on Link 4, this portion of this mitigation measure is not applicable.
B-08a: Clear vegetation August 16-January 14 and remove/trim trees September 16-December 31	This mitigation measure will be fulfilled during construction.
B-08a: Conduct pre-construction avian breeding surveys within 10 days of initiating work January 1-September 15 and submit surveys	Within 10 calendar days prior to construction, a qualified biologist will conduct avian breeding surveys for construction activities occurring within the general avian breeding season. Results of the surveys will be submitted to Wildlife Agencies for review and approval.
B-08a: Conduct pre-construction raptor breeding surveys within 10 days of initiating work January 1-September 15 and submit surveys	Pre-construction surveys for active raptor nests will be conducted by a qualified biologist within 10 days of construction if activities will occur during the raptor breeding season. Results of the surveys will be submitted to wildlife agencies for review and approval.
B-08a: Proceed with construction if no active nests observed	This mitigation measure will be fulfilled during construction.
B-08a: Proceed with construction if active nests found per conditions	If active nests are located, a buffer as defined in this measure will be established and monitored on a weekly basis to allow construction to proceed. This mitigation measure will be fulfilled during construction.
B-08a: Monitor active nests weekly until fledged	This mitigation measure will be fulfilled during construction.

Mitigation Measure and APM	Status
B-08a: Report survey results and monitoring	Results of surveys will be submitted as required and a qualified biologist will continue to monitor the site as appropriate. Weekly monitoring reports will be submitted.
B-09a: Conduct habitat assessment for bat nursery colonies prior to construction	A CDFG-approved biologist conducted day and night surveys. No bat nursery colonies were observed during the 2009 bat surveys performed along the Sunrise Powerlink alignment. The 2009 Bat Survey Report was submitted to the CPUC on February 19, 2010. An amendment to the 2009 Bat Survey Report was submitted on October 1, 2010 and approved by the CPUC on October 11, 2010.
B-09a: Conduct survey for bat nursery colonies prior to construction	A CDFG-approved biologist conducted a survey for bat nursery colonies. The 2009 Bat Survey Report was submitted to the CPUC on February 19, 2010. An amendment to the 2009 Bat Survey Report was submitted on October 1, 2010 and approved by the CPUC on October 11, 2010.
B-09a: No direct impacts to bat nursery colonies allowed	A CDFG-approved biologist conducted day and night surveys. No bat nursery colonies were observed during the 2009 bat surveys performed along the Sunrise Powerlink alignment. The 2009 Bat Survey Report was submitted to the CPUC on February 19, 2010. An amendment to the 2009 Bat Survey Report was submitted on October 1, 2010 and approved by the CPUC on October 11, 2010. If bat nursery colonies are observed during construction, this mitigation measure will be implemented.
B-09a: Implement methods to minimize indirect impacts to bat nursery colonies	Bat nursery colonies were not identified on Link 4. If nursery colonies are encountered during construction, measures will be implemented to minimize indirect impacts.
BIO-APM-01: Submit protocol surveys for sensitive plant and wildlife	On-the-ground protocol surveys have been conducted for sensitive plant and animal species as appropriate along Link 4. SDG&E has submitted survey reports to the agencies for the 2009 survey season. All 2010 surveys are complete and SDG&E is in the process of submitting these reports to the agencies. The 2010 Riparian Bird Survey Report was submitted to the agencies on October 28, 2010. The following reports will be submitted as soon as they are complete: the 2010 Arroyo Toad Survey, the 2010 Quino Checkerspot Butterfly Survey, and the 2010 Coastal California Gnatcatcher Survey. Results from the 2010 Rare Plant Survey for Link 4 were provided to the CPUC on October 28, 2010. Based on the 2009 and 2010 resource surveys no sensitive plant or wildlife species occur on Link 4. Potential habitat for arroyo toad occurs along Link 4, but is not occupied. Least Bell's vireo occur near Link 4, but outside the area of impact from construction. Coastal California gnatcatcher habitat occurs north of Link 4, but is not occupied and will not be impacted by construction. Quino checkerspot butterfly habitat does not occur along Link 4. No sensitive plant species were identified within the area of construction impacts for Link 4.
BIO-APM-02: Environmental training prior to construction	Project personnel will receive training as outlined in this measure.
BIO-APM-03: Restrict vehicle movement to existing access roads	The pre-construction component of this mitigation measure is complete. All vehicle traffic will occur on existing access roads and upgraded access roads within private property on the east and west end of Link 4 and on Alpine Boulevard, as outlined in the Final Construction Plans submitted on June 8, 2010. Limits of construction will be marked by SDG&E in advance for the contractor, contractor-acquired accesses, or public access roads.
BIO-APM-03: Avoid constructing roads during nesting season and submit surveys if new roads needed during nesting season	The pre-construction component of this mitigation measure is complete. All vehicle traffic will occur on existing public roads and access roads within private property on the east and west end of Link 4 and on Alpine Boulevard, as outlined in the Final Construction Plans submitted on June 8, 2010. No new roads will be constructed on Link 4. Therefore, this measure is not applicable to Link 4.
BIO-APM-03: No parking or driving under oak trees	This mitigation measure will be fulfilled during construction.
BIO-APM-03: Observe a 15 mph speed limit on dirt access roads	This mitigation measure will be fulfilled during construction.
BIO-APM-04: Restrict project activity to disturbance areas	Final Construction Design Plans were submitted to the CPUC on June 8, 2010. Project and survey activities will be confined to areas noted in final engineering drawings.
BIO-APM-04: Keep survey vehicles on existing roads	Survey vehicles will remain on existing roads.
BIO-APM-04: Obtain prior approval for surveying activities in sensitive habitat	A biological monitor will monitor project surveying activities for conformance with APMs.

Mitigation Measure and APM	Status
BIO-APM-04: Hiking off roads or paths during survey data collection is permitted	SDG&E survey personnel will implement all appropriate APMs.
BIO-APM-04: Do not apply discoloring agents on rocks or vegetation	No paint or permanent discoloring agents will be applied as outlined in this measure.
BIO-APM-05: Construct roads at right angles to streambeds and washes	New access roads for Link 4 will not be constructed through streambeds or washes; therefore, this mitigation measure is not applicable.
BIO-APM-05: Obtain permits for streambed crossings and roads constructed parallel to streambeds	Revised 401, 404 and 1602 permit applications were submitted for review and approval on March 30, 2010 and August 23, 2010. Work in or near jurisdictional areas will not occur until these permits are approved.
BIO-APM-05: Minimize disturbance from construction and maintenance activities	This mitigation measure will be fulfilled during construction.
BIO-APM-06: Comply with all applicable environmental laws and regulations	This mitigation measure will be fulfilled during construction.
BIO-APM-07: Littering is not allowed	The SWEAP video, approved by the CPUC on March 15, 2010, includes instruction that littering is prohibited on this project. The SWEAP video will be shown to all project personnel prior to construction and enforced throughout all phases of the Project.
BIO-APM-08: Delineate and avoid sensitive plant populations	Impacts to federal or State listed species have been avoided. Rare Plant Surveys were completed by a qualified biologist in 2009 and 2010 along Link 4. The 2009 survey report was submitted to the CPUC for review, as outlined in this measure, on November 9, 2009 and found adequate in a memo from the CPUC dated August 26, 2010. Information from the 2010 rare plant survey was provided to the CPUC on October 28, 2010. No rare plants were identified in the 2009 or 2010 surveys that would be impacted by construction activities along Link 4. For additional information, refer to mitigation measure B-05a.
BIO-APM-10: Do not harm wildlife	The SWEAP video, approved by the CPUC on March 15, 2010, includes instructions that no wildlife, including rattlesnakes, may be harmed except to protect life and limb. This SWEAP will be shown to all project personnel prior to construction and enforced throughout all phases of the Project. If rattlesnakes are encountered, they will be safely removed by a biologist or staff trained in safe snake handling procedures.
BIO-APM-10: Firearms are prohibited	The SWEAP video was approved by the CPUC on March 15, 2010. This SWEAP will be shown to all project personnel and enforced throughout all phases of the Project, and addresses that firearms are prohibited in all project areas, except for security personnel.
BIO-APM-11: Do not feed wildlife	The SWEAP video, approved by the CPUC on March 15, 2010, includes instructions that feeding wildlife is prohibited. The SWEAP video will be shown to all project personnel prior to construction and enforced throughout all phases of the Project.
BIO-APM-12: No pets permitted	The SWEAP video, approved by the CPUC on March 15, 2010, includes instructions that pets are prohibited at the Project site. The SWEAP video will be shown to all project personnel prior to construction and enforced throughout all phases of the Project.
BIO-APM-13: Do not collect plants or wildlife	The SWEAP video, approved by the CPUC on March 15, 2010, includes instructions that prohibit collecting plants or wildlife species for any reason. This SWEAP will be shown to all project personnel prior to construction of the Project and enforced throughout all phases of the Project.
BIO-APM-14: Removal of wildlife by qualified biological monitor or wildlife agency	Wildlife found to be trapped will be removed by a qualified biological monitor. If the biological resource monitor is not qualified to remove the entrapped wildlife, a recognized wildlife rescue agency (such as Project Wildlife) will be contacted to remove the wildlife and transport it safely to other suitable habitats.
BIO-APM-15: Submit report of unavoidable environmental damage	This mitigation measure will be fulfilled during construction, as needed.
BIO-APM-16: Schedule tree trimming during non-sensitive times	Tree trimming locations have been identified. Information regarding sensitive tree trimming locations will be put into the SDG&E GEARS database. This mitigation measure will be fulfilled during and post construction.
BIO-APM-16: Vary tree removal widths to maintain edge diversity	This mitigation measure will be fulfilled during construction.

Mitigation Measure and APM	Status
BIO-APM-17: Mow vegetation to use as access road	Access roads improved during construction of Link 4 are permanent access roads and shall remain open for maintenance of the alignment. Access road improvements will be performed by grading; therefore, this mitigation measure is not applicable for Link 4.
BIO-APM-18: Design structures and access roads to minimize impacts to sensitive features	A memo that documents compliance with Mitigation Measure BIO-APM-18, Task 1 was submitted to the CPUC on September 1, 2010. Structures and access roads have been designed to minimize impacts to sensitive features. The April 30, 2010 Mapbook illustrates changes to the final design of the alignment. The PMR (dated May 14, 2010 and approved by the BLM and CPUC on September 22, 2010) discusses the overall reduction of impacts to sensitive features and the relocation of the alignment to previously disturbed areas, when feasible.
BIO-APM-18: Submit site surveys when constructing poles or roads in high value habitats cannot be avoided	The transition poles that will be constructed on Link 4 will not impact high value wildlife habitat as described in this mitigation measure. Therefore, this component of BIO-APM-18 is not applicable.
BIO-APM-18: Construct crossings at right angles to streambeds if access roads cannot avoid sensitive water features	New access roads on Link 4 will not cross streambeds or sensitive water resources. Access road construction and design have been outlined in the Final Construction Plans submitted on June 8, 2010. For other construction activities near jurisdictional areas on Link 4, revised 401, 404, and 1602 permit applications were submitted to the applicable agencies for review and approval on March 30, 2010 and August 23, 2010.
BIO-APM-19: Implement and comply with BLM mitigation measures	This mitigation measure will be fulfilled during and post construction.
BIO-APM-19: Use Section 7 process to obtain incidental take authorization	Based on the surveys conducted, there are no species on Link 4 that would be covered under the Section 7 take authorization; therefore, this mitigation measure is not applicable.
BIO-APM-20: Leave vegetation in place where re-contouring is not required	This mitigation measure will be implemented during construction.
BIO-APM-21: Conform to "Suggested Practices for Raptor Protection on Power Lines"	A memo was submitted to the CPUC on September 15, 2010 describing that the conductor spacing meets recommended suggested practices where feasible. The CPUC confirmed compliance with this measure on September 16, 2010. Transition structures are included as part of construction of Link 4. These structures are located where overhead and underground transmission lines meet. These structures have been designed to conform with "Suggested Practices for Raptor Protection on Power Lines" (Raptor Research Foundation, Inc. 1981). Final Construction Design Plans were submitted for review and approval to the CPUC on June 8, 2010.
BIO-APM-22: Salvaging may include removal and stockpiling for replanting	No sensitive plants were identified on Link 4; therefore, this mitigation measure is not applicable.
BIO-APM-23: Remove only minimum amount of vegetation necessary for construction	This mitigation measure will be implemented during construction.
BIO-APM-23: Conserve topsoil in areas of sensitive habitat	This mitigation measure will be implemented during construction.
BIO-APM-24: Secure appropriate covers over excavations	This mitigation measure will be implemented during construction.
BIO-APM-26: Slope excavations on one end	This mitigation measure will be implemented during construction.
BIO-APM-27: Remove all raptor nests outside breeding season and prior to construction	Prior to construction and outside of the raptor breeding season, SDG&E will remove unoccupied non-threatened/endangered or non-eagle raptor species' nests that would be affected by construction activities. Per the USFWS, the golden eagle breeding season is December through June.
BIO-APM-27: Monitor active nests during breeding season	Active nests will be monitored during construction. If removal of an existing raptor nest during the breeding season is required, nest removal will be conducted by an approved biologist as outlined in this mitigation measure.

Mitigation Measure and APM	Status
BIO-APM-28: Survey potential bat roost trees to be removed and follow procedures for felling trees	A CDFG-approved biologist conducted a survey for bat maternity roost trees. The 2009 Bat Survey Report was submitted to the CPUC on February 19, 2010. An amendment to the 2009 Bat Survey Report was submitted on October 1, 2010 and approved by the CPUC on October 11, 2010. No maternity roosts were observed on the project; therefore, this mitigation measure is not applicable.
BIO-APM-29: Minimize impacts of exterior lighting adjacent to preserved habitat	Construction of Link 4 of the Sunrise Powerlink Project will occur during daytime hours, as directed by local county ordinances. No night construction is anticipated and construction night lighting is not anticipated to be needed, therefore, this mitigation measure does not apply. Should night lighting be deemed necessary during construction, SDG&E will comply with this mitigation measure.
BIO-APM-29: Minimize vehicle speed and volume	This mitigation measure will be implemented during construction.
G-CM-01: Provide biological monitoring and perform periodic inspections once or twice a week	A qualified biological monitor with the authority to issue stop work orders will be on-site during construction activities and weekly monitoring reports will be prepared. This mitigation measure will be fulfilled during construction.
G-CM-02: Use SDG&Es Water Quality Construction BMP Manual.	This mitigation measure will be fulfilled during construction. See WQ-APM-4
G-CM-03: Obtain NPDES permit and implement a SWPPP.	A Notice of Intent was submitted to the State Water Resources Control Board on May 5, 2010. A Waste Discharge Identification Number (937C358170) was received on May 18, 2010. A SWPPP has been developed and was submitted to the CPUC on September 23, 2010. The SWPPP will be implemented during construction.
G-CM-04: Training to implement conservation measures.	Project personnel have received training as outlined in this measure. A log of all personnel that have participated in SWEAP training will be periodically submitted to the CPUC throughout construction. (See BIO-APM-2)
G-CM-05: Limit vehicle speeds on access roads to minimize fugitive dust.	See BIO-APM-3
G-CM-06: Keep all activities within designated temporary and permanent disturbance areas.	Final Construction Design Plans were submitted to the CPUC on June 8, 2010. Project and survey activities will be confined to areas noted in final dimensioned engineering drawings.
G-CM-06: Keep survey vehicles on existing roads.	Survey vehicles will remain on existing roads. (See BIO-APM-04)
G-CM-06: No paint or discoloring agents will be applied to rocks or vegetation.	No paint or permanent discoloring agents will be applied as outlined in this measure. (See BIO-APM-4)
G-CM-06: Impacts associated unauthorized activity will be mitigated at higher ratios.	See BIO-APM-4
G-CM-07: Brush clearing will require prior approval from the biological monitor in conformance with the CMs.	See BIO-APM-9
G-CM-08: Wire stringing.	Stringing of new wire and reconductoring is not included in the scope of work for Link 4; therefore this mitigation measure is not applicable.
G-CM-09: Disposal of wastes.	Littering will be prohibited on this project. (See BIO-APM-7)
G-CM-10: Emergency repairs will follow the CM's to the extent feasible.	See BIO-APM-15
G-CM-10: Submit written report to agencies having jurisdiction.	See BIO-APM-15
G-CM-10: If required, develop mitigation plan consistent with CMs.	See BIO-APM-15

Mitigation Measure and APM	Status
G-CM-11: Structures and access roads should be designed to minimize impacts to sensitive features.	A memo documenting compliance with Mitigation Measure BIO-APM-18 Task 1 was submitted to the CPUC for the administrative record on September 1, 2010. Structures and access roads have been designed to minimize impacts to sensitive features. The April 30, 2010 PMR Mapbook illustrates changes to the final design of the alignment. The PMR (dated May 14, 2010 and approved by the BLM and CPUC on September 22, 2010) discusses the overall reduction of impacts to sensitive features and the redesign of the alignment to be relocated to previously disturbed areas, when feasible.
G-CM-11: Conduct site surveys when not feasible to avoid constructing poles or access roads in designated sensitive areas.	See BIO-APM-18
G-CM-12: Leave vegetation in place where re-contouring is not required. Restore disturbed soils based on HRP per G-CM-16.	This mitigation measure will be fulfilled during construction.
G-CM-13: Use lowest illumination allowed for human safety.	Construction of Link 4 of the Sunrise Powerlink Project will occur during daytime hours, as directed by local county ordinances. No night construction is anticipated and construction night lighting is not anticipated to occur and therefore, this mitigation measure does not apply. Should night lighting be deemed necessary during construction, SDG&E will comply with this mitigation measure.
G-CM-13: Vehicle speed limits may not exceed 15 mph to prevent mortality of nocturnal wildlife species.	See BIO-APM-29
G-CM-14: Locate surface-disturbing activities in previously disturbed areas, to the extent practical.	The pre-construction portion of this measure is complete. The project structures and work areas were designed to avoid sensitive vegetation, to the extent possible. During construction, vegetation and soil impacts will be minimized. See B-01a Task 1 for additional information.
G-CM-15: Use of construction mats.	See B-1a
G-CM-15: Incorporate impact of using mats into HRP (G-CM-16).	No sensitive vegetation occurs on Link 4 that requires the use of temporary construction mats; therefore, this mitigation measure is not applicable.
G-CM-16: Habitat Restoration Plan approval.	See B-1a
G-CM-16: Impacts, compensation, and a qualified habitat restoration specialist.	See B-1a
G-CM-16: Temporary impacts to desert scrub and dune habitats.	This mitigation measure does not apply to Link 4. No desert scrub or dune habitats exist along Link 4. The Project Modification Report (PMR) describes the types of habitat that exist along Link 4, which include Chaparral, Coastal and Montane Scrub, and Disturbed/Developed/Non-Vegetated habitat. The PMR was submitted to the CPUC on May 14, 2010 and approved by the CPUC and BLM through a Determination Memorandum on September 22, 2010.(See B-1a)
G-CM-17: Habitat Management Plan.	SDG&E will not impact sensitive vegetation communities prior to the approval of a Habitat Management Plan. The HAP/HMP was prepared by an approved biologist and was submitted for review and approval on September 22, 2010 as outlined in this mitigation measure. (See B-1a)
G-CM-17: Off-site compensation and property acquisition.	SDG&E will not impact sensitive vegetation communities prior to the approval of a Habitat Acquisition Plan. The HAP/HMP was prepared by an approved biologist and was submitted for review and approval on September 22, 2010 as outlined in this mitigation measure. (See B-1a)
G-CM-18: Re-seeding of disturbed areas after a transmission line-caused fire.	See B-1k
G-CM-20: Develop a Weed Control Plan for pre-construction and non-invasive weed abatement.	See B-3a

Mitigation Measure and APM	Status
G-CM-20: Contents of the Weed Control Plan.	See B-3a
G-CM-23: Use appropriately sized equipment.	This mitigation measure will be implemented during construction.
G-CM-24: Develop a Dust Control Plan.	The Dust Control Plan, which addresses mitigation measures AQ-1a, AQ-APM-1, AQ-APM-2, and AQ-APM-3, was approved on January 20, 2010. This plan covers the entire Sunrise Powerlink Project alignment and identifies specific measures that will be required to prevent generation of dust. The Dust Control Plan will be implemented and enforced during construction of Link 4. (See AQ-1a)
G-CM-24: Implement Dust Control Plan.	See AQ-1a
G-CM-25: Restrict vehicle movement to access roads.	Vehicle traffic will be restricted to existing paved and unpaved access roads when feasible. All vehicle traffic will occur on existing access roads and newly constructed access roads within private property on the east and west end of Link 4 and on Alpine Boulevard as outlined in the Final Construction Plans submitted on June 8, 2010. (See BIO-APM-3)
G-CM-26: Delineate construction limits.	The limits of construction will be delineated with orange construction fencing or flagging prior to the start of construction. No new gate installation will occur on public access roads. New access roads will be located on private driveways. (See B-1a)
G-CM-27: Build access roads at right-angles to stream crossings.	No new access roads will be built across streams; therefore, this mitigation measure is not applicable.
G-CM-28: Coordinate with land officer 60 days prior to initiating construction to determine the use of gates and signs at access roads.	Link 4 access roads will be located on private driveways. One gate replacement will be required on Link 4. The gate replacement will occur on the Loritz property. SDG&E has coordinated with the landowner for replacement of the gate and a landowner agreement was signed April 17, 2010. This landowner coordination was summarized in the L-2b Memorandum submitted to the CPUC on October 5, 2010 and approved by the CPUC on October 12, 2010. No new gate installation will occur on public access roads.
G-CM-29: Provide funding for protection from off-road vehicle enthusiasts	This mitigation measure is not applicable to Link 4. Areas set aside for habitat conservation are not located along Link 4 (Alpine Boulevard and associated private lands). (See B-1a)
G-CM-31: Mowing of access roads to maintain access for maintenance.	Access roads improved during construction of Link 4 are for permanent access roads and shall remain open for maintenance of the alignment. Access road improvements will be performed by grading; therefore, this mitigation measure is not applicable for Link 4.
G-CM-32: Surveys for USFWS listed species.	See BIO-APM-1
G-CM-33: Delineate plant population boundaries.	Rare Plant Surveys were completed in 2009 and 2010 by a qualified biologist. No rare plants were identified in the 2009 or 2010 surveys along Link 4. (See B-5a)
G-CM-34: Tree trimming guidelines.	The Habitat Acquisition Plan discusses mitigation for loss of native trees. A Habitat Acquisition Plan was submitted to the CPUC for review and approval on February 4, 2010. Tree Mitigation shall occur for loss of native trees or native tree trimming.
G-CM-35: Rare plants shall be salvaged where avoidance is not feasible.	No rare plants were identified on Link 4 during the 2009 or 2010 rare plant surveys. If rare plants are encountered during construction, measures will be implemented to reduce impacts.
G-CM-36: Do not harm wildlife, including rattlesnakes.	The SWEAP video, approved by the CPUC on March 15, 2010, includes instructions that no wildlife, including rattlesnakes, may be harmed except to protect life and limb. This SWEAP will be shown to all project personnel prior to construction and enforced throughout all phases of the Project. If rattlesnakes are encountered, they will be safely removed by a biologist or staff trained in safe snake handling procedures. (See BIO-APM-10)
G-CM-37: Do not feed wildlife.	The SWEAP video, approved by the CPUC on March 15, 2010, includes instructions that feeding wildlife is prohibited. The SWEAP video will be shown to all project personnel prior to construction and enforced throughout all phases of the Project. (See BIO-APM-11)

Mitigation Measure and APM	Status
G-CM-38: Do not bring pets to project areas.	The SWEAP video, approved by the CPUC on March 15, 2010, includes instructions that pets are prohibited at the Project site. The SWEAP video will be shown to all project personnel prior to construction and enforced throughout all phases of the Project. (See BIO-APM-12)
G-CM-39: Cover steep-walled trenches to avoid entrapping wildlife.	See B-7a
G-CM-40: Look under vehicles and around equipment for wildlife prior to use.	See B-7a
G-CM-41: Do not dispose of excess fill, brush, or debris within waters of the U.S.	This mitigation measure will be implemented during construction.
G-CM-41: Do not dispose of fuel, oil, coolant, and other wastes within or near waters of the U.S. Do not fuel vehicles near waters of the U.S.	Routine vehicle maintenance will occur at the designated contractor's yard and will not occur along Link 4. Refueling may occur along Link 4 by operators trained in refueling vehicles and equipment. Refueling will not occur within 100 feet of wetlands or waters of the United States. This mitigation measure will be implemented during construction.
G-CM-42: Maintain riparian buffer construction/staging areas and riparian areas.	This mitigation measure will be implemented during construction.
G-CM-44: Determine project limits for temporary and permanent disturbance to occur during maintenance activities.	Final Construction Design Plans were submitted to the CPUC on June 8, 2010. Project and survey activities will be confined to areas noted in final engineering drawings.
G-CM-45: Purchase/dedicate suitable habitat for preservation.	A Habitat Acquisition Plan was submitted for review and approval on February 4, 2010. The plan includes the requirements as outlined in this mitigation measure. A revised HAP/HMP was submitted for review and approval on September 22, 2010 and includes the requirements as outlined in this mitigation measure. (See B-1a)
SS-CM-01: Avoid Impacts to San Diego Thornmint	Limits of construction of Link 4 are located between MP 98.2 and MP 92. San Diego thornmint occurs between MP 114 and MP 119; therefore, this mitigation measure is not applicable.
SS-CM-01: Implement Weed Control Plan (G-CM-20) for San Diego Thornmint	Limits of construction of Link 4 are located between MP 98.2 and MP 92. San Diego thornmint occurs between MP 114 and MP 119; therefore, this mitigation measure is not applicable.
SS-CM-02: Compensation of unavoidable impacts.	Limits of construction of Link 4 are located between MP 98.2 and MP 92. San Diego thornmint occurs between MP 114 and MP 119; therefore, this mitigation measure is not applicable.
SS-CM-03: A USFWS-permitted biologist must delineate suitable/occupied Quino habitat.	Per USFWS QCB protocol, site assessments for suitable QCB habitat were conducted in 2009 and 2010 by USFWS-permitted biologists. The site assessments identified areas requiring protocol surveys. QCB protocol surveys were completed by a USFWS-permitted biologist and a revised 2009 QCB Focused Survey Report was submitted to CPUC for review January 14, 2010. Survey results indicate QCB were found by MP 116.5, 110, 79 to 80, 74.5, 71, and 36. Construction of Link 4 will occur between MP 98.2 and MP 92; therefore, no disturbance will occur to Quino checkerspot butterfly habitat.
SS-CM-04: Conduct a pre-construction presence/absence survey for Quino checkerspot butterfly (QCB).	See B-7i
SS-CM-04: No species-specific compensation required in areas where survey is conclusive for QCB.	See B-7i
SS-CM-04: In the event of inconclusive surveys for QCB, consider all habitat occupied and compensate accordingly.	See B-7i
SS-CM-04: Host plant mapping during pre-construction surveys for QCB.	No host plants were identified on Link 4.
SS-CM-05: Include habitat restoration in USFS's Recovery Plan for Quino Checkerspot Butterfly.	This mitigation measure is not applicable to Link 4 as no QCB habitat is present and restoration will not be required. (See B-7i)

Mitigation Measure and APM	Status
SS-CM-06: Quino habitat within the Jacumba Unit.	This mitigation measure is not applicable to Link 4. This mitigation measure addresses only the Jacumba Unit of QCB critical habitat, which does not occur along Link 4.
SS-CM-07: Construction during Quino flight season.	This mitigation measure does not apply for the Link 4. Activities will take place outside Quino checkerspot butterfly habitat.
SS-CM-08: Pre-construction Service protocol survey within suitable breeding habitat for arroyo toad.	USFWS protocol-level ARTO surveys were conducted in 2009 and 2010. The surveys were conducted along the two stream crossings across Alpine Boulevard between MP 98.2 and MP 92. No arroyo toad were found at these locations during the 2009 or the 2010 surveys. (See B-7j)
SS-CM-09: Develop arroyo toad translocation monitoring program prior to initiating construction.	Protocol-level surveys were conducted in 2009 and 2010 along the two stream crossings across Alpine Boulevard between MP 98.2 and MP 92. No arroyo toads were found at these locations. In the event arroyo toad are found, the approved Arroyo Toad Translocation Plan for the project will be implemented. (See B-7j)
SS-CM-10: Develop and implement predator control program in USFS lands.	There is no USFS-land associated with Link 4; therefore, this measure is not applicable. (See B-7j)
SS-CM-11: Requirements for arroyo toad-occupied habitat loss.	Arroyo toad surveys were conducted along the two stream crossings across Alpine Boulevard between MP 98.2 and MP 92. No arroyo toad were found at these locations during the 2009 or 2010 surveys. Since occupied arroyo toad habitat does not exist on Link 4, this mitigation measure is not applicable.
SS-CM-12: Daylight use of access roads to avoid/minimize impacts to arroyo toads.	This mitigation measure will be fulfilled during construction.
SS-CM-13: No construction activities during arroyo toad breeding season.	This mitigation measure will be fulfilled during construction.
SS-CM-15: Do not locate improvements within arroyo toad upland aestivation and riparian breeding habitat.	The April 30, 2010 PMR Mapbook illustrates changes to the final design of the alignment. The PMR (dated May 14, 2010 and approved September 22, 2010) discusses overall minimization and avoidance of impacts to arroyo toad habitat and a relocation of the alignment to previously disturbed areas when feasible. In addition, surveys were conducted and completed along the two stream crossings across Alpine Boulevard between MP 98.2 and MP 92. No arroyo toad were found at these locations during the 2009 or 2010 surveys. (See B-7j)
SS-CM-16: Construction outside of the least Bell's vireo breeding season.	This mitigation measure will be fulfilled during construction.
SS-CM-16: Construction during the least Bell's vireo breeding season - survey 10 days prior to initiating activity.	A permitted biologist will conduct pre-construction surveys for least Bell's vireo and southwestern willow flycatcher within 10 calendar days prior to the initiation of construction that would occur between March 15 and September 15.
SS-CM-16: Protocol for when vireos are present during construction.	A permitted biologist will conduct surveys for least Bell's vireo and southwestern willow flycatcher daily should vireos be present. Results of surveys will be submitted as required and a qualified biologist will continue to monitor the site as appropriate. Weekly monitoring reports will be submitted.
SS-CM-16: Avoid impacts to jurisdictional water resources to further reduce impacts to least Bell's vireo	A permitted biologist will monitor for active nests should least Bell's vireo be present.
SS-CM-18: Develop and implement brown-headed cowbird trapping program for USFS lands.	This mitigation measure is not applicable to Link 4. Construction along Link 4 will not occur in the Cleveland National Forest.
SS-CM-19: Conduct brushing or grading activities within occupied gnatcatcher habitat outside of the breeding season.	This mitigation measure will be implemented during construction. See B-7l for additional requirements.
SS-CM-19: Monitor all vegetation clearing activities in occupied gnatcatcher habitat.	This mitigation measure will be implemented during construction. See B-7l for additional requirements.
SS-CM-19: Conduct presence/absence survey for gnatcatcher 10 days prior to initiating construction activities. Conduct nest survey, as appropriate.	Marginal coast California gnatcatcher habitat exists adjacent to the work area for the transition poles at the west end of Link 4. Surveys will be conducted within 10 calendar days prior to construction by a qualified biologist. Results of the surveys will be submitted to Wildlife Agencies for review and approval (refer to measure B-07l for additional information).
SS-CM-19: Establish no-construction barrier around active nests.	This mitigation measure does not apply to Link 4. Activities will take place outside coastal California gnatcatcher habitat.

Mitigation Measure and APM	Status
SS-CM-20: Compensate for loss of occupied gnatcatcher habitat.	Occupied coastal California gnatcatcher habitat does not occur on Link 4; therefore, this mitigation measure is not applicable.
SS-CM-21: Compensate for loss of unoccupied gnatcatcher habitat.	Unoccupied critical habitat does not occur on Link 4; therefore this mitigation measure is not applicable. USFWS designated suitable habitat occurs north of Alpine Boulevard construction. Activities will not impact this habitat.
SS-CM-22: No construction during lambing season from January 1 through June 30 or period of greatest water need.	This mitigation measure does not apply for the Link 4. Activities will take place outside Peninsular bighorn sheep habitat.
SS-CM-23: Compensation for loss of occupied big horn sheep habitat.	This mitigation measure does not apply for the Link 4. Peninsular bighorn sheep habitat does not occur on Link 4.
SS-CM-24: Big Horn Sheep Monitoring Plan.	This mitigation measure does not apply for the Link 4. Peninsular bighorn sheep habitat does not occur on Link 4.
SS-CM-24: Helicopter flight paths over occupied habitat.	This mitigation measure does not apply for the Link 4. Peninsular bighorn sheep habitat does not occur on Link 4.
SS-CM-24: Cease construction within I-8 Island until sheep have left the area.	This mitigation measure does not apply for the Link 4. Peninsular bighorn sheep habitat does not occur on Link 4.
SS-CM-25: Fund, design, and construct a fencing system to prevent bighorn sheep from crossing I-8.	This mitigation measure does not apply for the Link 4. Peninsular bighorn sheep habitat does not occur on Link 4.
SS-CM-25: Fund the removal of invasive species and hazardous fences.	This mitigation measure does not apply for the Link 4. Peninsular bighorn sheep habitat does not occur on Link 4.
SS-CM-25: Fund a 10-year monitoring program of bighorn sheep behavior, movement, and dispersal.	This mitigation measure does not apply for the Link 4. Peninsular bighorn sheep habitat does not occur on Link 4.
SS-CM-25: Fund biennial surveys to be conducted by CDFG.	This mitigation measure does not apply for the Link 4. Peninsular bighorn sheep habitat does not occur on Link 4.
V-01a: Screen construction sites if visible from public areas	This mitigation measure does not apply to Link 4. No substation construction or staging and material areas are included in the scope of work for Link 4.
V-01a: Submit final construction plans 60 days prior to construction	This mitigation measure does not apply to Link 4. No substation construction or staging and material areas are included in the scope of work for Link 4. Final Construction Plans were submitted to the CPUC on June 8, 2010.
V-01b: Design and install lighting to avoid night lighting impacts	No construction yards, storage yards, staging areas, or fly yards are included in the scope of work for Link 4. Therefore, this mitigation measure is not applicable.
V-01b: Submit a Construction Lighting Mitigation Plan 90 days prior to construction	No construction and storage yards and staging areas and fly yards are included in the scope of work for Link 4 and therefore this mitigation measure is not applicable.
V-02a: Construct access and spur roads at appropriate angles	The pre-construction component of this mitigation measure is complete. Final Construction Plans were submitted to the CPUC on June 8, 2010. Access roads along Link 4 are existing paved or unpaved roads. Existing access roads will be improved and used subsequently for O&M activities along the eastern and western end of Link 4 and will comply with this measure.
V-02a: Consult with visual resources specialist to evaluate access road visibility prior to final design	<p>The pre-construction component of this mitigation measure is complete. Final Construction Plans were submitted to the CPUC on June 8, 2010. Access roads along Link 4 are existing paved or unpaved roads. Existing access roads will be improved and used subsequently for O&M activities along the eastern and western end of Link 4 and will comply with this measure.</p> <p>Access road improvements, which were described in the PMR submitted to the CPUC on May 14, 2010, were reviewed by Michael Clayton, the CPUC visual resource specialist. Michael Clayton met with SDG&E on May 21, 2010 to discuss road information and recommendations were made. The PMR was revised per the recommendations and approved by CPUC and BLM through a Determination Memorandum dated September 22, 2010.</p>

Mitigation Measure and APM	Status
V-02a: Submit table 60 days prior to construction	The pre-construction component of this mitigation measure is complete. Final Construction Plans were submitted to the CPUC on June 8, 2010. Access roads along Link 4 are existing paved or unpaved roads. Existing access roads will be improved and used subsequently for O&M activities along the eastern and western end of Link 4 and will comply with this measure. Access road improvements, which were described in the PMR submitted to the CPUC on May 14, 2010, were reviewed by Michael Clayton, the CPUC visual resource specialist. Michael Clayton met with SDG&E on May 21, 2010 to discuss road information and recommendations were made. The PMR was revised per the recommendations and approved by CPUC and BLM through a Determination Memorandum dated September 22, 2010.
V-02a: Submit final construction plans 60 days prior to construction	The April 30, 2010 Project Modification Report (PMR) and Mapbook was submitted to the CPUC on May 14, 2010 and approved by the CPUC and BLM through a Determination Memorandum dated September 22, 2010. The PMR and Mapbook illustrate changes to the final design that would reduce in-line views of land scars. Final Construction Design Plans were submitted to the CPUC on June 8, 2010.
V-02b: Create barriers for public access if opened as a construction route	This mitigation measure is not applicable for Link 4. No new gate installation will occur on public access roads. Existing access roads will be improved and used subsequently for O&M activities along the eastern and western end of Link 4. These access roads are located on private driveways.
V-02b: Submit final construction and restoration plans 60 days prior to construction	Final construction plans were submitted to CPUC on June 8, 2010. The Restoration Plan for Sensitive Vegetation Communities in Temporary Impact Areas was submitted to CPUC and Wildlife Agencies on September 24, 2010. The CPUC approved this plan on November 3, 2010. No impacts to sensitive vegetation communities will occur on Link 4 prior to approval of this plan by the Wildlife Agencies.
V-02c: Treat disturbed soils visible from sensitive public viewing locations	This mitigation measure will be implemented during construction as necessary.
V-02c: Submit final construction and restoration plans 60 days prior to construction	The April 30, 2010 Project Modification Report (PMR) and Mapbook, which was submitted to the CPUC on May 14, 2010 and approved on September 22, 2010, illustrates changes to the final design that would reduce color contrast of land scars on non-Forest lands. Final Construction Design Plans were submitted for review and approval to the CPUC on June 8, 2010.
V-66a: Reconsider the location of transition structures	According to the CPUC's visual resources consultant and documented on October 6, 2010, the relocation of the Chocolate Canyon transition cable poles as shown in the April 30, 2010 Mapbook demonstrates compliance with the requirements of V-66a.
V-66a: Submit memo and final construction plans 120 days prior to construction	The April 30, 2010 Mapbook illustrates changes to the final design of the alignment incorporating the fine-tuning of the transition structures to reduce structural prominence. The Mapbook was submitted to the CPUC on May 14, 2010 and approved by CPUC and BLM through a Determination Memorandum dated September 22, 2010. Final Construction Design Plans were submitted to the CPUC on June 8, 2010. SDG&E submitted a memo to the CPUC documenting compliance with this mitigation measure on October 1, 2010 and approved on October 6, 2010.
VR-APM-01: Place structures at maximum distance from crossings	The pre-construction component of this mitigation measure is complete. The April 30, 2010 Mapbook illustrates changes to the final design of the alignment, which incorporates re-design of the alignment to reduce visual impacts at highway, canyon, and trail crossings. The Mapbook was submitted to the CPUC on May 14, 2010 and approved on September 22, 2010. Where the underground crosses Interstate 8 in Alpine, no structures will visually impact the crossing. The alignment crosses the highway via underground conduits at this point. Cable Poles were sited at the maximum possible distance. On the east end of Link 4, cable poles are located approximately 1,750 feet from Interstate 8. Cable Poles on the west end of Link 4 are located approximately 980 feet from Interstate 8.
VR-APM-04: Do not paint or discolor rocks or vegetation	The SWEAP video was approved by the CPUC on March 15, 2010. The SWEAP video will be shown to all project personnel prior to construction and enforced throughout all phases of the Project. The video includes instructions prohibiting application of paint or permanent discoloring agents on rocks or vegetation to indicate survey or construction limits.

Mitigation Measure and APM	Status
VR-APM-05: Do not install structures in front or in line-of-sight of residences	<p>The two transition structures are not within line-of-sight of a residence and the remaining portion of Link 4 is located underground.</p> <p>SDG&E did not install structures directly in front of residences or in direct line-of-sight from residences, where possible. SDG&E consulted with affected property owners on the proposed structure locations to reduce land use and visual impacts. A revised Mapbook and PMR were submitted to CPUC on May 14, 2010 and approved by CPUC and BLM through a Determination Memorandum dated September 22, 2010.</p>
L-01a: Submit Construction Notification Plan 45 days prior to construction	The Construction Notification Plan was approved by the CPUC on March 1, 2010.
L-01a: Mail a public notice 15 days prior to construction	The Construction Notification Plan that was approved by the CPUC on March 1, 2010 addresses mailing public notifications. Proof of Notification will be submitted to CPUC prior to start of construction.
L-01a: Advertise in newspapers and bulletins 15 days prior to construction	The Construction Notification Plan that was approved by the CPUC on March 1, 2010 addresses newspaper advertisement notifications. Proof of Notification will be submitted to CPUC prior to start of construction.
L-01a: Post notices of construction at public venues 30 days prior to construction	The Construction Notification Plan that was approved by the CPUC on March 1, 2010 addresses posting of notices of construction at public venues. Proof of Notification will be submitted to CPUC prior to start of construction.
L-01a: Provide a public liaison person and toll-free hotline number before and during construction	The Construction Notification Plan identifies the public liaison person assigned to the project and the toll-free hotline. The Plan was approved by the CPUC on March 1, 2010.
L-02b: Notify landowners 90 days prior to completing final design of route	A memorandum submitted to the CPUC on October 5, 2010 summarizes the landowner notification process. All landowners have been notified within 1000 feet of the project alignment. Landowners not directly affected by project facilities were sent a letter through certified mail in Spring 2009 and given the opportunity to request changes. Landowners already in easement acquisition negotiations were notified through the acquisition process and provided the opportunity to request changes. These changes are also addressed in the Project Modification Report and Mapbook submitted on May 14, 2010 and approved by CPUC and BLM through a Determination Memorandum dated September 22, 2010. CPUC approved this memo on October 12, 2010.
L-02b: Provide notified parties 30 days to identify conflicts and potential reroutes	SDG&E provided affected landowners 30 days in which to respond to the project notification and discuss changes to the project to accommodate landowner requests. The L-2b Mitigation Measure memorandum (dated October 5, 2010) summarizes the criteria used to evaluate these requests. A summary of each landowner request received is also included with this memo. In addition, the PMR submitted on May 14, 2010 and approved by CPUC and BLM through a Determination Memorandum dated September 22, 2010 addresses several of these changes. CPUC approved this memo on October 12, 2010.
L-02b: Provide written report at or before the time property owners are identified	On March 18, 2009, SDG&E met with CPUC representatives to discuss the interpretation and notification requirements for mitigation measure L-2b. The notification and landowner requests processes were developed based on those discussions. SDG&E did not provide the CPUC and BLM with a written report identifying properties that were suspected of having a land use conflict as described in the mitigation measures at or before the time property owners were notified, but SDG&E did consider these impacts in their initial evaluation of the project and with subsequent route changes as described in the Project Modification Report submitted to the CPUC on May 14, 2010 and approved by the BLM and CPUC through a Determination Memorandum dated September 22, 2010.
L-02b: Provide written report within 30 days of the public notice closing date for responses	A memorandum submitted to the CPUC and BLM on October 5, 2010 summarizes the landowner notification process. All landowners have been notified within 1000 feet of the project alignment. Landowners not directly affected by project facilities were sent a letter through certified mail in Spring 2009 and given the opportunity to request changes. Landowners already in easement acquisition negotiations were notified through the acquisition process and provided the opportunity to request changes. These changes are also addressed in the Project Modification Report and Mapbook submitted on May 14, 2010 and approved by the CPUC and BLM through a Determination Memorandum dated September 22, 2010. The CPUC approved this memo on October 12, 2010.

Mitigation Measure and APM	Status
L-02b: Develop specific reroute modifications	<p>The modifications identified in this measure are illustrated in the April 30, 2010 Mapbook and discussed briefly in the the Project Modification Report submitted to the CPUC on May 14, 2010 and approved by the CPUC and BLM through a Determination Memorandum dated September 22, 2010.</p> <p>The underground construction and associated access road have been shifted west off of Star Valley road onto private property owned by Richard Loritz.</p>
LU-APM-01: Provide advance notice within 300 feet of construction activities	SDG&E will provide advance notice to residents, property owners, and tenants within 300 feet of construction activities and will appoint a public affairs officer to address public concerns or questions.
LU-APM-02: Place new structures more than 330 feet from residences	There are two transition poles at each end of Link 4. SDG&E located each transition pole more than 330 feet from existing residences.
LU-APM-04: Provide notification prior to construction	To facilitate access to properties obstructed by construction activities, SDG&E will notify property owners and tenants in advance of construction activities and provide alternative access if feasible.
LU-APM-05: Coordinate construction activities with water management representatives	Alpine Boulevard crosses an existing creek via box culverts to protect erosion and scour from flooding and drainage. Duct bank installation will cross via a bridge attachment underneath an existing creek. Duct banks will match existing decks and not impact flood control capacity. SDG&E initially coordinated with the County to discuss these conflicts and mitigative construction methods on October 7, 2009 and continues to meet with them.
LU-APM-06: Restrict and confine activity within limits of construction	The pre-construction component of this mitigation measure is complete. The limits of construction activities have been determined, with activity restricted to and confined within those limits. Final construction plans were submitted to the CPUC on June 8, 2010. During construction, activities will be limited to the width of the County right-of-way along Alpine Boulevard for trenching. At the two jack and bore locations, construction areas will also be located within the County right-of-way or within granted areas as determined in the appropriate permits.
LU-APM-06: Provide flagging for environmentally sensitive areas	The ROW boundary and limits of construction activity inside and outside the ROW will be flagged in environmentally sensitive areas to alert construction personnel that those areas should be minimize or avoided.
LU-APM-07: Install project facilities outside of private properties, parks, and other recreational areas	SDG&E designed project facilities to be located along the edges or borders of private property, open space parks, and recreation areas to the extent feasible. SDG&E submitted a memo to CPUC on October 5, 2010 documenting landowner notification and consultation. The final alignment is shown on the PMR Mapbook, which was approved on September 22, 2010.
LU-APM-08: Coordinate to include Project in General Plans	<p>SDG&E conducts on-going coordination with the County of San Diego regarding General Plan updates. The contact at the County of San Diego is LeAnn Carmichael (858-694-3739).</p> <p>No General Plan updates are planned for Imperial County or the City of San Diego.</p> <p>The contact for Imperial County is Andy Home, Deputy County Executive Officer for Natural Resources Development (760) 482-4727. The contact for the City of San Diego is Jeffery Pasek, Watershed Manager (619) 533-7599.</p>
LU-APM-09: Obtain ministerial land use permits	A traffic control permit has been issued by the County of San Diego Department of Public Works and was submitted to the CPUC on September 17, 2010. No other ministerial permits will be required for this work.
R-APM-02a: Provide advance notice if restrictions in access routes to recreational use areas	Link 4 does not cross through any recreational areas, nor will construction activities in this area result in impacts to nearby areas; therefore this mitigation measure does not apply.
R-APM-02b: No construction on federal holidays that affects trail use	Link 4 does not cross through any recreational areas. However, construction along Link 4 will occur near the California Riding and Hiking Trail. This measure will be implemented during construction.
R-APM-02c: Coordinate construction activities affecting parkland and trails prior to construction	SDG&E met with Maryanne Vancio, San Diego County Trails Program Coordinator, on September 21, 2010 to coordinate construction activity impacts to a riding trail that is adjacent to Alpine Boulevard. Construction of Link 4 will not occur on the trail. Signs will be posted at either end of the trail along Alpine Boulevard to notify users of construction activities. A memo dated October 1, 2010 documenting this coordination was provided to CPUC for their administrative record.
R-APM-02d: Post signs at alternative park access and parking	Link 4 does not cross through any recreational areas, nor will construction activities in this area result in impacts to nearby areas; therefore this mitigation measure does not apply.

Mitigation Measure and APM	Status
R-APM-02e: Post signs at alternative trails and bikeways	Link 4 does not cross through any recreational areas, nor will construction activities in this area result in impacts to nearby areas; therefore this mitigation measure does not apply.
R-APM-02f: Post signs at equestrian trails during helicopter construction	Helicopter construction will not occur on Link 4; therefore this mitigation measure does not apply.
R-APM-02f: Regularly check and maintain signs during helicopter construction	Helicopter construction will not occur on Link 4; therefore this mitigation measure does not apply.
WR-01a: Coordinate construction activities and schedule 60 days prior to construction	SDG&E met with MaryAnne Vancio, San Diego County Trails Program Coordinator, on September 21, 2010 to coordinate construction activity impacts to a portion of the California Riding and Hiking Trail adjacent to Link 4. No impacts will occur to the trail. A memo dated October 1, 2010 documents this coordination effort was provided to the CPUC for their administrative record. (See R-APM-2c)
WR-01a: Submit documentation of coordination 30 days prior to construction	See WR-01a and R-APM-2c
WR-01b: Coordinate temporary detours of trails 60 days prior to construction	See WR-01a and R-APM-2c
WR-01b: Site new trail segments to avoid sensitive resources and restore to pre-construction conditions	Link 4 does not cross through the recreational areas identified in this mitigation measure; therefore, this mitigation measure does not apply.
WR-01b: Post public notices at trail detours	No trail closures or detours are required on Link 4; therefore this mitigation measure does not apply.
WR-01c: Coordinate alternative recreation facilities 60 days prior to construction	SDG&E met with MaryAnne Vancio, San Diego County Trails Program Coordinator, on September 21, 2010 to coordinate construction activity impacts to a portion of the California Riding and Hiking Trail adjacent to Link 4. No impacts will occur to the trail. A memo dated October 1, 2010 documents this coordination effort was provided to the CPUC for their administrative record. (See WR-01a and R-APM-2c)
WR-01c: Post public notices at recreation facilities	SDG&E has coordinated with MaryAnne Vancio, San Diego County Trails Program Coordinator. SDG&E shall post signs at each end of the trail impacted by construction of Link 4. (See WR-01a and R-APM-2c)
WR-01c: Submit documentation of coordination 30 days prior to construction	Link 4 does not cross through any recreational areas, nor will construction activities in this area result in impacts to nearby areas; therefore this mitigation measure does not apply to Link 4.
WR-02a: Relocate 500kV line along southern boundary of JAM properties	The JAM property is not located on Link 4; therefore this mitigation measure does not apply.
WR-02a: Submit memo and construction plans 120 days prior to construction	The BCD Alternative does not occur on Link 4; therefore this mitigation measure does not apply.
WR-03a: Coordinate to determine locations of tower sites and spur roads	SDG&E met with MaryAnne Vancio, San Diego County Trails Program Coordinator, on September 21, 2010 to coordinate construction activity impacts to a portion of the California Riding and Hiking Trail adjacent to Link 4. No impacts will occur to the trail. A memo dated October 1, 2010 documents this coordination effort was provided to the CPUC for their administrative record. (See WR-1a and R-APM-2c)
WR-03a: Coordinate 60 days prior to construction and submit documentation 30 days prior to construction	SDG&E met with MaryAnne Vancio, San Diego County Trails Program Coordinator, on September 21, 2010 to coordinate construction activity impacts to a portion of the California Riding and Hiking Trail adjacent to Link 4. No impacts will occur to the trail. A memo dated October 1, 2010 documents this coordination effort was provided to the CPUC for their administrative record. (See WR-01a and R-APM-2c)
AG-01a: Coordinate with property owners and tenants 60 days prior to construction	No agricultural operations will be affected by construction of Link 4; therefore, this measure is not applicable. A memorandum summarizing this coordination was submitted to CPUC on October 15, 2010 for their administrative record.
AG-01c: Coordinate with grazing operators 60 days prior to construction and 30 days after construction	There are no grazing operations located along Link 4; therefore this mitigation is not applicable. A memorandum summarizing this coordination was submitted to CPUC on October 15, 2010 for their administrative record.

Mitigation Measure and APM	Status
AG-03b: Consult and notify 60 days prior to erection of any structure affecting aerial applicator operations	SDG&E sent notification letters to aerial applicators operating in San Diego and Imperial Counties on July 6, 2010. Copies of these notifications were sent to the CPUC, BLM and County Farm Bureaus on July 13, 2010. The notification advised when and where the new transmission line and towers will be erected and included aerial maps depicting the proposed project route and agricultural lands near the route. These areas are not located along Link 4, therefore, this measure is not applicable.
AG-03b: Provide maps of the alignment on or near agricultural lands	SDG&E sent notification letters to aerial applicators operating in San Diego and Imperial Counties on July 6, 2010. Copies of these notifications were sent to the CPUC, BLM and County Farm Bureaus on July 13, 2010. The notification advised when and where the new transmission line and towers will be erected and included aerial maps depicting the proposed project route and agricultural lands near the route. These areas are not located along Link 4, therefore, this measure is not applicable.
C-01a: Submit cultural resources inventory prior to construction	A Final Class III Inventory was approved by the CPUC and BLM on June 2, 2010.
C-01a: Stake tower locations prior to cultural resource field surveys	The selected ROW along Link 4 was surveyed prior to performance of cultural resource field surveys.
C-01b: Protect potential and register-eligible resources from direct project impacts	The Project Modification Report and Mapbook submitted on May 14, 2010 and approved by the CPUC and BLM through a Determination Memorandum on September 22, 2010 illustrates that the final design of the alignment incorporates changes to avoid impacts to potentially register-eligible and register eligible resources based on preliminary National Register of Historic Places and consultation with the SHPO. Twenty-eight sites have been identified where impacts cannot be avoided. None of these sites will be impacted by construction on Link 4. A Final Class III Inventory was approved by the CPUC and BLM on June 2, 2010.
C-01b: Undertake additional studies if resources cannot be protected from direct impacts	Twenty-eight sites have been identified where impacts cannot be avoided. Where potentially NRHP- and/or CRHR-eligible cultural resources cannot be protected or avoided, additional studies will take place and further recommendation for mitigative treatment will be made. An evaluation report will be developed and submitted of this effort when available. None of these sites will be impacted by construction on Link 4.
C-01b: Incorporate results of studies in HPTP	Twenty-eight sites have been identified where impacts cannot be avoided. Where potentially NRHP- and/or CRHR-eligible cultural resources cannot be protected or avoided, additional studies will take place and further recommendation for mitigative treatment will be made. An evaluation report will be developed and submitted of this effort when available. None of these sites will be impacted by construction on Link 4; therefore the Historic Properties Treatment Plan (HPTP) is not required for Link 4 and this mitigation measure is not applicable. (See C-1b Task 1)
C-01b: Designate NRHP and/or CRHR resources as ESA if within 50 feet of direct impact	There is one ESAs within 50 feet of direct impact areas on Link 4. The ESA will be monitored by cultural monitors during construction and observations will be summarized and submitted to the CPUC in the weekly report in accordance with this measure.
C-01b: Erect protective flagging or other markers for ESA	There is one ESA within 50 feet of direct impact areas on Link 4. The ESA will be monitored by cultural monitors during construction and observations will be summarized and submitted to the CPUC in the weekly report in accordance with this measure. Protective fencing and markers will be used to designate the area as an ESA. The ESA will be monitored by cultural Monitors during construction and observations will be summarized and submitted to the CPUC in the weekly report.
C-01b: Develop and implement monitoring program as part of HPTP	A monitoring program was incorporated into the Historic Properties Management Plan. The HPMP was approved on July 13, 2010. In the case of an unanticipated discovery, monitoring will be implemented during construction.
C-01c: Submit Historic Properties Treatment Plan	Twenty-eight sites have been identified where impacts to potentially NRHP- and/or CRHR-eligible cultural resources cannot be protected or avoided. Additional studies will take place at these sites and further recommendation for mitigative treatment will be made. An evaluation report of this effort will be developed and submitted when available. None of these sites will be impacted by construction on Link 4; therefore, a Historic Properties Treatment Plan (HPTP) is not required and this mitigation measure is not applicable. (See C-1b Task 1)

Mitigation Measure and APM	Status
C-01d: Conduct data recovery investigations to reduce adverse effects	28 sites have been identified where potentially NRHP- and/or CRHR-eligible cultural resources cannot be protected or avoided, additional studies will take place and further recommendation for mitigative treatment will be made. An evaluation report will be developed and submitted of this effort when available. None of these sites will be impacted by construction on Link 4; therefore a Historic Properties Treatment Plan (HPTP) is not needed for Link 4. This mitigation measure is not applicable.
C-01d: Submit field closure report prior to construction within 100 feet of affected resource	Data recovery is not required on Link 4. Therefore, this measure is not applicable.
C-01d: Submit final report of data-recovery investigations within 1 year of completing fieldwork	Data recovery is not required on Link 4; therefore, this measure is not applicable.
C-01e: Implement archaeological monitoring at cultural ESAs	This mitigation measure will be fulfilled during construction as described in the approved HPMP.
C-01e: Qualification of archaeologists must be approved	The qualifications of the principal archaeologist and archaeological monitors were submitted to the BLM and CPUC for approval on July 20, 2010. Cultural Monitor Resumes have been approved by the BLM on September 30, 2010. Only monitors approved by the CPUC and BLM will work on the Project. A list of all approved monitors will be updated throughout the project.
C-01e: Retain and schedule any required Native American monitoring	A Historic Properties Management Plan (HPMP) was approved by the CPUC and BLM on July 15, 2010 and includes locations where Native American monitoring will be required. On Link 4, Native American monitors will accompany archaeological monitors wherever the archaeologists are required.
C-01e: Submit cultural resources monitoring monthly reports during construction	This mitigation measure will be implemented during construction pursuant to the approved HPMP.
C-01e: Notify if any damage to cultural resource ESAs and divert work to a buffer distance	This mitigation measure will be implemented during construction pursuant to the approved HPMP.
C-01f: Train construction personnel to recognize and protect cultural resources	The SWEAP video, approved by the CPUC on March 15, 2010, includes instructions regarding the recognition of possible buried cultural remains and protection of all cultural resources. The SWEAP video will be shown to all project personnel prior to construction and enforced throughout all phases of the Project.
C-01g: Avoid impacts to Old Highway 80	Final construction plans showing implementation of avoidance techniques to retain integrity along the UG section of Alpine Boulevard (also known as Old Highway 80) were submitted on June 8, 2010 to the CPUC for review. The Historic Properties Management Plan was approved on July 15, 2010 and describes measures to minimize and/or avoid impacts to Old Highway 80. The portion of Old Highway 80 within Link 4 was determined to retain poor integrity and was not recommended as a noncontributing element to its eligibility for listing. Therefore, cultural monitors will not be required to observe removal of this portion of Old Highway 80.
C-01g: Formally evaluate segments that are affected by construction impacts	Final construction plans showing implementation of avoidance techniques to retain integrity along the UG section of Alpine Boulevard (also known as Old Highway 80) were submitted on June 8, 2010 to the CPUC for review. The Historic Properties Management Plan was approved on July 15, 2010.
C-02a: Avoid known Native American remains and protect with ESA designation	Government-to-government consultations have been ongoing. SDG&E has avoided direct impacts to known locations of Native American human remains and will continue to avoid direct impacts to Native American human remains. Records of consultations are being held with the BLM. No known locations of Native American remains occur along Link 4. If Native American remains are encountered during construction, this mitigation measure will be implemented.
C-02a: Contact agencies if sites will be affected	SDG&E has avoided direct impacts to known locations of Native American human remains and will continue to avoid direct impacts to Native American human remains. If Native American remains are encountered during construction, this mitigation measure will be implemented.
C-02a: Assist and support MLD with reinterment location	SDG&E has avoided direct impacts to known locations of Native American human remains and will continue to avoid direct impacts to Native American human remains. If Native American remains are encountered during construction, this mitigation measure will be implemented.

Mitigation Measure and APM	Status
C-02a: Follow laws that govern treatment of human remains	SDG&E will follow all laws, statutes and regulations as appropriate if Native American human remains are encountered during construction.
C-02a: Support in consultations with Native Americans and implement required actions and studies	Government-to-government consultations have been ongoing. Records of consultations are being held with the BLM.
C-02a: Divert work if human remains are discovered and inform officer	This measure will be implemented as defined if human remains are discovered during construction.
C-03a: Implement archaeological monitoring	Archaeological and Native American monitors will be on-site during subsurface construction disturbance at all locations identified for buried archaeological deposits. The Historic Properties Management Plan, approved by the CPUC and BLM on July 15, 2010, states that monitoring will be at highly sensitive areas defined during Buried Site Testing (BST). It also states that if BST is not feasible in areas classified as high sensitivity for buried sites, those areas will be monitored during ground-disturbing construction activities. Monitoring observations will be summarized and submitted to the CPUC in the weekly report.
C-03a: Divert work if buried cultural material discovered and notify archaeologist	This mitigation measure will be fulfilled during construction.
C-04a: Assist and support BLM in consultations with Native Americans to assess impacts	Government-to-government consultations have been ongoing. Records of consultations are being held with the BLM.
C-04a: Submit documentation of all pre-construction actions 30 days prior to construction	Written documentation of the completion of all preconstruction consultation actions completed to date was included in the HPMP, approved on July 15, 2010, and the "Inventory Report for Sunrise Cultural Resources." Additional information will be provided to the BLM as the consultation process continues prior to and during construction. There are no sites on Link 4 that require a Historic Properties Treatment Plan.
CR-APM-01: Instruct and provide a contract addressing protection and avoidance of cultural resources	The SWEAP video, approved by the CPUC on March 15, 2010, includes instructions regarding the recognition of possible buried cultural remains and protection of all cultural resources. A construction contract addressing state and federal laws regarding antiquities, fossils, and plants and wildlife, including the collection and removal, as well as the importance of these resources and the purpose and necessity of protecting them will be signed by each individual. Records of these contracts will be kept with the monitor. The SWEAP video will be shown to all project personnel prior to construction and enforced throughout all phases of the Project.
CR-APM-02: Flag archaeological sites eligible for National Register	A Historic Properties Management Plan (HPMP) was approved by the CPUC on July 15, 2010 and addresses avoidance of archeological sites that are eligible or potentially eligible for the National Register. No archeological sites identified will be impacted by construction along Link 4.
CR-APM-02: Implement impact avoidance and APMs during construction	A Historic Properties Management Plan (HPMP) was approved by the CPUC on July 15, 2010 and addresses avoidance of archeological sites that are eligible or potentially eligible for the National Register. No archeological sites identified will be impacted by construction along Link 4; therefore a Historic Properties Treatment Plan (HPTP) is not needed and this mitigation measure is not applicable.
CR-APM-03: Report within 24 hours any previously unidentified cultural resource discovered	This mitigation measure will be fulfilled during construction.
CR-APM-03: Suspend operations in the immediate area of the discovered cultural resource	This mitigation measure will be fulfilled during construction as needed.
CR-APM-03: Evaluate the discovered resource and determine appropriate actions.	This mitigation measure will be fulfilled during construction as needed.
CR-APM-03: Develop and implement a treatment plan to mitigate impacts	The Historic Properties Management Plan (HPMP) provides direction for discovery and mitigation of impacts to cultural resource sites. The HPMP was approved by the CPUC and BLM on July 15, 2010 and will be implemented during construction.

Mitigation Measure and APM	Status
CR-APM-04: Conduct maintenance and other activities in conformance with national standards	This mitigation measure will be fulfilled during construction.
CR-APM-05: Follow guidelines for cultural resources	The Historic Properties Management Plan approved on July 15, 2010, incorporates the guidance provided in this measure. SDG&E will continue to comply with Cultural Resources mitigation measures as outlined in the MMCRP.
CR-APM-06: Avoid historic properties by fencing or barricading	A Historic Properties Management Plan (HPMP) was approved by the CPUC on July 15, 2010 and identifies historic properties along the Project route. Three historic properties have been identified along Link 4. As the entire 6.2 mile segment of Link 4 will have a designated construction corridor and because there are no resources within 50 feet of direct impact, it will not be necessary to establish independent Environmentally Sensitive Areas (ESAs) for individual sites. Any inadvertent impact to unknown historic properties near Link 4 will be avoided by restricting construction activities to designated construction limits.
CR-APM-06: Implement a plan if historic properties cannot be avoided	A Historic Properties Management Plan (HPMP) was approved by the CPUC on July 15, 2010 and identifies historic properties along the Project route. Three historic properties have been identified along Link 4. SDG&E will establish independent Environmentally Sensitive Areas (ESAs) for individual sites. Any inadvertent impact to unknown historic properties near Link 4 will be avoided by restricting construction activities to designated construction limits.
CR-APM-07: Control impacts that can deteriorate historic	The Historic Properties Management Plan (HPMP) approved by the CPUC on July 15, 2010, addresses protection measures to be implemented during construction.
CR-APM-07: Implement protective measures to minimize erosion and weeds	This mitigation measure will be fulfilled during construction.
CR-APM-07: Implement control measures to minimize vibration, dust, and fumes	The Historic Properties Management Plan (HPMP) approved by the CPUC on July 15, 2010, addresses protection measures to be implemented during construction.
CR-APM-07: Minimize deterioration to buildings and structures	The Historic Properties Management Plan (HPMP) approved by the CPUC on July 15, 2010, addresses protection measures to be implemented during construction.
CR-APM-07: Implement a plan if deterioration cannot be avoided	This measure will be implemented during construction, if required.
CR-APM-08: Avoid and protect landscaping essential to historic property	A Historic Properties Management Plan (HPMP) was approved by the CPUC on July 15, 2010 and addresses avoidance of archeological sites that are eligible or potentially eligible for the National Register. No sites have been identified that will be impacted by construction along Link 4; therefore a Historic Properties Treatment Plan (HPTP) is not needed and this mitigation measure is not applicable. (See also C-1g)
CR-APM-08: Minimize intrusion to the historic setting	A Historic Properties Management Plan (HPMP) was approved by the CPUC on July 15, 2010 and addresses avoidance of archeological sites that are eligible or potentially eligible for the National Register. No sites have been identified that will be impacted by construction along Link 4; therefore a Historic Properties Treatment Plan (HPTP) is not needed and this mitigation measure is not applicable. (See also C-1g)
CR-APM-09: Restrict construction and operation access	This mitigation measure will be implemented during construction.
CR-APM-09: Instruct construction and maintenance personnel to protect sensitive properties	Construction and maintenance personnel will be instructed in protection of sensitive properties.
CR-APM-10: Span conductors over historic property	No spans will occur on Link 4. Link 4 includes undergrounding the transmission line, therefore this measure is not applicable for Link 4.
CR-APM-10: Boring shall avoid disturbance to historic property	Jack and bores associated with Link 4 will not occur near historic properties, therefore this mitigation measure is not applicable to Link 4.
CR-APM-11: Implement standard practices on private land	A memo was submitted to the CPUC on September 13, 2010 documenting compliance with this mitigation measure.
CR-APM-12: Conduct cultural surveys for staging areas not yet identified	This mitigation measure is not applicable to Link 4. No additional staging areas are anticipated on Link 4.

Mitigation Measure and APM	Status
PAL-01a: Submit an inventory of significant paleontological resources	SDG&E has conducted and submitted a "Paleontological Records" report dated February 25, 2010 and a "Sunrise Powerlink Paleontological Monitoring and Discovery Treatment Plan" dated April 7, 2010. These documents were approved by the CPUC, BLM and other involved land-managing agencies on July 30, 2010.
PAL-01b: Submit a Paleontological Monitoring Treatment Plan	The Paleontological Monitoring and Treatment Plan was developed by a qualified paleontologist based on Society of Vertebrate Paleontology guidelines and was approved by the BLM, CPUC and other agencies with jurisdiction on July 20, 2010.
N-01a: Obtain a variance for night construction or 200 feet from sensitive receptors 45 days prior to construction	SDG&E shall limit construction activities to working hours as issued by the County of San Diego in their Traffic Control permit (Permit number 0910-77) which was submitted to the CPUC in a memorandum dated September 24, 2010. Should construction activities need to occur outside these hours, SDG&E shall apply for a variance as outlined in this mitigation measure.
N-01a: Employ noise suppression techniques	This measure will be implemented during construction.
N-02a: Manage blasting with a plan for each site 45 days prior to construction	Blasting is not anticipated on Link 4, however, if blasting is deemed necessary during construction, SDG&E will comply with this measure as defined and prepare a location specific blasting plan.
N-02a: Restore damaged structure and compensate owner	Blasting is not anticipated on Link 4, however, if blasting is deemed necessary during construction, SDG&E will comply with this measure as defined and prepare a location specific blasting plan.
NOI-APM-01: Provide notice to sensitive receptors and residences within 300 feet of construction	The Construction Notification Plan addresses providing notice to sensitive receptors within 300 feet of construction sites, staging areas, and access roads and was submitted on August 26, 2009. The Plan was approved by the CPUC on March 1, 2010. SDG&E will provide verification that notifications were made prior to start of construction. The preconstruction part is complete for this mitigation measure.
NOI-APM-01: Provide a public liaison person before and during construction.	The Construction Notification Plan identifies a public liaison person that can respond to concerns of neighboring receptors about noise disturbances and was submitted on August 26, 2009. The Plan was approved by the CPUC on March 1, 2010.
NOI-APM-01: Establish a toll free number for questions and complaints	The Construction Notification Plan, which was submitted on August 26, 2009 and approved by the CPUC on March 1, 2010, identifies the toll free telephone number established by SDG&E for receiving questions or complaints during construction. The Construction Notification Plan also identifies procedures for responding to callers.
T-01a: Restrict lane closures or obstructions on major roadways	This mitigation measure will be implemented during construction. SDG&E will follow working hours as issued by the County of San Diego.
T-04a: Provide temporary pedestrian access	This mitigation measure will be implemented during construction.
T-04a: Provide detours and signs for bike route closures	This mitigation measure will be implemented during construction.
T-05a: Coordinate road repairs with public agencies	This mitigation measure will be implemented post construction.
T-05a: Protect drainage structures and incorporate measures into access agreement/easement	SDG&E submitted final construction plans on June 8, 2010. The plans show avoidance and minimization of impacts to roadside drainage structures. Protection measures in accordance with the plan will be implemented during construction.
T-07a: Conform to agency requirements if parking spaces are eliminated or relocated	The Construction Notification Plan addresses notification of the public through local newspapers and on-site postings when parking spaces may be temporarily eliminated or relocated. The Plan was submitted on August 26, 2009 and approved by the CPUC on March 1, 2010. Should parking spaces be eliminated or relocated as part of construction of the Link 4, SDG&E will post "No Parking" signs 48 hours in advance to notify the public of the potential short-term elimination of parking spaces. This will be implemented during construction.

Mitigation Measure and APM	Status
T-09a: Prepare a Construction Transportation Management Plan	<p>A project-wide Traffic Study was completed on March 3, 2010 and was submitted on April 28, 2010. The Plan was approved by San Diego County on September 29, 2010. The Study revealed that there is only one area, Highway 67 on Link 5, where a CTMP will be required.</p> <p>A Traffic Control Plan has been developed and submitted to the County of San Diego for approval. A Traffic Control Permit was issued by the County of San Diego (Permit number 0910-77) which addresses traffic and transportation issues related to the construction of the 230 kV underground portion of the Sunrise Powerlink. The traffic control permit was submitted to the CPUC for their records on September 24, 2010.</p>
T-11b: Provide notification when and where the line will be erected prior to construction	<p>SDG&E has consulted with U.S. Customs and Border Patrol and other agencies regarding the location of new transmission lines and towers on December 17, 2009, February 8, 2010, and April 20, 2010.</p> <p>Transition poles on the west end of Link 4 were moved further down slope in an effort to reduce impacts to the flight path of federal helicopters in the area. A memo documenting this coordination was provided to CPUC for the administrative record on October 15, 2010.</p>
T-11b: Provide maps of the alignment near the U.S./Mexico border	<p>The April 30, 2010 Mapbook includes aerial images that clearly show the new lines and towers in relation to the U.S./Mexico border within the San Diego and Imperial Counties. SDG&E provided a copy of this Mapbook to border patrol aircraft, the U.S. Customs and Border Patrol, and the CPUC on May 14, 2010. SDG&E consulted with the U.S. Customs and Border Patrol on December 17, 2009, February 8, 2010, and April 20, 2010.</p>
T-APM-02a: Obtain permits for temporary lane closures	<p>A Traffic Control Permit was issued by the County of San Diego (Permit number 0910-77) on September 17, 2010 and submitted to the CPUC on September 24, 2010.</p>
T-APM-02b: Submit Detour Plans	<p>A Traffic Control Permit was issued by the County of San Diego (Permit number 0910-77) on September 17, 2010 and addresses detours. This permit was submitted to the CPUC on September 24, 2010.</p>
T-APM-02b: Right-of-Entry permit required for construction and maintenance activities outside of easements	<p>This mitigation measure does not apply to Link 4. No project activities will occur within ABDSP.</p>
T-APM-02b: Provide a request for maintenance or other earth-disturbing activities	<p>No project activities will occur on California State Park land; therefore, this measure is not applicable.</p>
T-APM-04a: Coordinate in advance with emergency service providers	<p>SDG&E has coordinated with emergency service providers on February 2, 2010, February 17, 2010, and August 18, 2010.</p> <p>A project-wide Traffic Study was completed on March 3, 2010.</p> <p>A Traffic Control Permit was issued by the County of San Diego (Permit number 0910-77) on September 17, 2010 and addresses emergency vehicle access. This permit was submitted to the CPUC on September 24, 2010.</p>
T-APM-04a: Notify cities and counties regarding construction activities	<p>SDG&E has met with the respective emergency services including Alpine Fire, County Sheriff, Viejas Fire, CDF and Lakeside Fire. SDG&E shall notify and provide required information to counties and cities prior to initiation of construction activities that could impact police, fire, ambulance and paramedic services.</p>
T-APM-05a: Coordinate construction activities adjacent to school bus stops with school districts 1 month prior to construction	<p>SDG&E met with the Alpine Unified School District regarding impacts to school bus stops along Alpine Boulevard on August 26, 2010 at 1:00 p.m. at the Alpine School District Office. Attendees included Tom Pellegrino, Superintendent, Rob Turner, Business Manager, and David Ragsdale, Director of Transportation.</p>
T-APM-05a: Consult with transit authorities 1 month prior to construction	<p>SDG&E has coordinated with the Metropolitan Transit System to reduce potential interruption of transit services as a result of construction along Link 4 on September 2, 2010. Attendees included Mike Daney and Devin Braun.</p>
T-APM-06b: Parking in San Diego County shall comply with County regulations and per an approved traffic control plan	<p>A Traffic Control Permit was issued by the County of San Diego (Permit number 0910-77) on September 17, 2010 and addresses parking on San Diego County-maintained roads. This permit was submitted to the CPUC on September 24, 2010.</p> <p>This measure will be satisfied during construction.</p>

Mitigation Measure and APM	Status
T-APM-09a: Underground utility facilities within 1,000 feet of an Officially Designated Scenic Highway	This mitigation measure is not applicable to the Link 4 NTP. There are no new or relocated utility facilities within 1,000 feet of an Officially Designated Scenic Highway.
T-APM-10a: Ensure continuous access to properties	A Traffic Control Permit was issued by the County of San Diego (Permit number 0910-77) on September 17, 2010 and addresses laying down of temporary steel plate trench bridge. This permit was submitted to the CPUC on September 24, 2010. This mitigation measure will be implemented during construction and is not applicable as a pre-construction mitigation measure.
HS-APM-01: Train personnel using hazardous materials	The SWEAP video that was approved by the CPUC on March 15, 2010 includes training on hazardous materials management procedures. This SWEAP will be shown to all project personnel and enforced throughout all phases of the Project.
HS-APM-01: Develop a Hazardous Communication Plan	The Sunrise Powerlink Hazard Communication Plan (HazCom) was submitted to the CPUC on March 12, 2010 and approved by the CPUC on April 2, 2010. The HazCom Plan includes site specific information and the location of MSDS.
HS-APM-02: Trained personnel to perform refueling	Refueling will only be performed by operators trained in refueling of vehicles or equipment.
HS-APM-02: Conduct refueling in designated areas or by assigned vehicles	Refueling will be performed in designated areas or by a mobile refueling tanker with secondary containment.
HS-APM-03: Develop applicable safety plans	The Sunrise Powerlink Hazard Communication Plan (HazCom) was submitted to the CPUC on March 12, 2010 and approved by the CPUC on April 2, 2010. The HazCom Plan includes site specific information and the location of MSDSs. The HMBP, SWPPP and SPCC Plan are provided as Appendices to the HazCom Plan.
HS-APM-05: Investigate impacts of all contaminated sites	A Phase 1 Environmental Site Assessment was submitted to the CPUC for review on August 28, 2009 and SDG&E's final response to comments was submitted on December 16, 2009. As noted in the original Phase I report, two intersections along Alpine Boulevard, developed with a pair of adjoining service stations, have documented releases. SDG&E also prepared a Soil Management Plan that was submitted to the CPUC on July 2, 2010 and approved on September 9, 2010. Based on comments received from CPUC, SDG&E is preparing a Health and Safety Plan that will be submitted prior to construction.
HS-APM-07: Train personnel to recognize UXO	The SWEAP video was approved by the CPUC on March 15, 2010 and discusses training of personnel involved in excavation regarding recognition of UXO. No areas were identified to contain potential unexploded ordinances along Link 4.
HS-APM-08: Assign Environmental or Health & Safety Representative	SDG&E has assigned Steve Riggs, Field Monitoring Manager with Burns & McDonnell, as the Environmental Field Representative project-wide.
HS-APM-09: Contact airport representatives within 2 miles	A memo was submitted to the CPUC documenting compliance with Mitigation Measure HS-APM-9, Task 1, on September 10, 2010. SDG&E has provided notice to the FAA of all structures on the line, and the FAA has published notice and request for comment of structures within 2 miles of the Jacumba airstrip.
HS-APM-10: Store and dispose of hazardous waste per regulations	If hazardous wastes are generated, they will be properly disposed of and stored in accordance with all applicable federal and state regulations. Hazardous material minimization measures shall be employed whenever possible.
HS-APM-11: Develop Fire Prevention and Response Plan	The Fire Plan, acknowledged by the CAL Fire Chief, was submitted to the CPUC on December 14, 2009 and approved by the CPUC on February 2, 2010.
HS-APM-11: Assign Fire Marshal to enforce fire prevention provisions	The Fire Plan, acknowledged by the CAL Fire Chief, was submitted to the CPUC on December 14, 2009 and approved by the CPUC on February 2, 2010 and a project Fire Marshall has been hired onto the project and is assigned to enforce the FPRP.
HS-APM-12: Develop a Traffic Control Plan	A Traffic Control Permit was issued by the County of San Diego (Permit number 0910-77) on September 17, 2010 and addresses emergency vehicle access. This permit was submitted to the CPUC on September 24, 2010.

Mitigation Measure and APM	Status
HS-APM-14: Conduct environmental training to construction workers	The SWEAP video approved by the CPUC on March 15, 2010 provides environmental training to construction workers regarding potential exposure. This SWEAP will be shown to all project personnel and enforced throughout all phases of the Project.
HS-APM-15: Stop work if soil or groundwater contamination is suspected	This mitigation measure will be fulfilled during construction.
HS-APM-16: Terminate work and implement health and safety procedures if contamination is suspected	This mitigation measure will be fulfilled during construction.
HS-APM-16: Take preliminary samples and send to lab for testing	This mitigation measure will be fulfilled during construction.
HS-APM-17: Work may proceed if no contamination	This mitigation measure will be fulfilled during construction.
HS-APM-17: Notify agencies if contamination is above regulatory limits	This mitigation measure will be fulfilled during construction.
P-01a: Implement an environmental monitoring plan	The pre-construction component of this mitigation measure has been completed. The Environmental Monitoring Plan was submitted to the CPUC on May 10, 2010. In addition, the SWEAP video, approved by the CPUC on March 15, 2010, discusses implementation of the Environmental Monitoring Program; maintenance of emergency spill supplies and equipment; the proper use of hazardous materials, development of a Hazardous Communication Plan; development of applicable environmental safety plans associated with hazardous materials; assignment of an Environmental Field Representative and/or General Contractor to the Health & Safety Office for the project; proper disposal/storage of hazardous and solid wastes in accordance with federal, state, and local regulations; and environmental training regarding potential exposure. The SWEAP video will be shown to all project personnel and enforced throughout all phases of the Project.
P-01a: Designate an Environmental Field Representative	The Environmental Monitoring Plan was submitted to CPUC on May 10, 2010. The Plan states that the Environmental Field Representative/ Lead Monitoring Manager for this Project is Steve Riggs.
P-01b: Maintain hazardous material spill kits onsite	Hazardous material spill kits will be kept and maintained in certain vehicles on the job-site.
P-03a: Collect soil or groundwater samples if contaminated	This measure will be implemented during construction.
P-03a: Coordinate with regulatory agencies if contaminated soil or groundwater confirmed by laboratory data	This mitigation measure will be implemented during construction.
P-03b: Submit report to agencies of contaminated soil within 30 days of laboratory data receipt	This mitigation measure will be implemented during construction.
P-07a: Implement steps 60 days prior to construction if excavation will occur	A Phase 1 Environmental Site Assessment was submitted to the CPUC for review on August 28, 2009 and SDG&E's final response to comments was submitted on December 16, 2009. As noted in the original Phase I report, two intersections along Alpine Boulevard, developed with a pair of adjoining service stations, have documented releases. SDG&E also prepared a Soil Management Plan that was submitted to the CPUC on July 2, 2010 and approved on September 9, 2010. Based on comments received from CPUC, SDG&E is preparing a Health and Safety Plan that will be submitted prior to construction.
PS-01a: Limit conductor surface gradient	Conductor will be installed underground and therefore this mitigation measure is not applicable.
PS-02a: Identify objects within and near ROW for induced voltages and implement electrical grounding	A memorandum addressing completion of this measure was submitted to the CPUC on September 30, 2010 and approved on October 6, 2010.
AQ-01a: Pave, apply water 3 times daily, or apply soil stabilizers	A Dust Control Plan was submitted to the CPUC on September 14, 2009 and approved by the CPUC on January 20, 2010. Dust Control Plan measures will be implemented during project construction.
AQ-01a: Pre-water sites 48 hours prior to clearing	This mitigation measure will be fulfilled during construction.

Mitigation Measure and APM	Status
AQ-01a: Reduce amount of disturbed area	This mitigation measure will be fulfilled during construction.
AQ-01a: Spray stock-piles daily or as needed	This mitigation measure will be fulfilled during construction.
AQ-01a: Cover loads in trucks or maintain 6 inches of free-board	This mitigation measure will be fulfilled during construction.
AQ-01a: Pre-moisten import and export dirt prior to transport	This mitigation measure will be fulfilled during construction.
AQ-01a: Sweep public streets daily if soil tracking visible	This mitigation measure will be fulfilled during construction.
AQ-01a: Apply soil stabilizers or water on inactive work areas	This mitigation measure will be fulfilled during construction.
AQ-01a: File a Dust Control Plan 30 days prior to construction	The Dust Control Plan was submitted to the CPUC on September 14, 2009 and approved by the CPUC on January 20, 2010.
AQ-01b: Maintain construction equipment and use low-emission equipment	SDG&E will use available Tier 3 equipment, minimizing the use of Tier 2 equipment at the yard. Any portable equipment over 50 hp will be permitted with the local Air Pollution Control District (APCD) or the California Air Resources Control Board. Equipment run logs will be maintained on a daily basis and periodically submitted to the CPUC.
AQ-01h: Obtain NOx emission reduction credits or fund incentive programs prior to construction	Mitigation measure AQ-01h, which was required to achieve emission reductions to levels below the federal thresholds is no longer applicable. The emissions expected based on the PMR are less than the federal General Conformity de minimus thresholds for San Diego Air Basin as determined in the Memorandum of Determination issued by the CPUC and BLM dated September 22, 2010. For additional information refer to page 9 of the memorandum.
AQ-04a: Report quarterly the status of carbon credits	SDG&E sent an email regarding greenhouse gas emissions off-sets to the CPUC on August 27, 2009. The emissions off-sets approach was conditionally approved on September 7, 2009. The CPUC sent an email approving the proposed off-set purchases on November 9, 2009 and SDG&E purchased CRTs to satisfy this measure. SDG&E will report the quarterly status of efforts to create reductions or obtain banked credit and the quantity of construction-phase greenhouse gas emissions offset by credits. The preconstruction component of this measure is complete. The other requirements will be implemented during construction.
AQ-04c: Submit SF6 leak detection and repair program 90 days prior to construction	Avoidance of Sulfur hexafluoride emissions does not apply to this site. Sulfur hexafluoride is only used in equipment that is installed in substations. Scope of work along Link 4 does not include substation construction and therefore this mitigation measure does not apply.
AQ-04c: Become a Partner in EPA's SF6 Partnership prior to construction.	Sulfur hexafluoride is only used in equipment that is installed in substations. Scope of work along Link 4 does not include substation construction and therefore this mitigation measure does not apply.
AQ-04c: Report SF6 emissions to CCAR	Sulfur hexafluoride is only used in equipment that is installed in substations. Scope of work along Link 4 does not include substation construction and therefore this mitigation measure does not apply.
AQ-APM-02: Prohibit grading when wind exceeds 25 mph	This mitigation measure will be fulfilled during construction. SDG&E will prohibit construction grading on days when the wind gusts exceed 25 mph to the extent feasible.
AQ-APM-02: Cover loads in trucks or maintain 2 feet of freeboard	This mitigation measure will be fulfilled during construction.
AQ-APM-02: Install snow fence-type windbreaks	This mitigation measure will be fulfilled during construction.
AQ-APM-02: Limit vehicle speeds to 15 mph on unpaved roads	This mitigation measure will be fulfilled during construction.
AQ-APM-02: Water unpaved roads	This mitigation measure will be fulfilled during construction.
AQ-APM-02: Apply soil stabilizers	This mitigation measure will be fulfilled during construction.
AQ-APM-02: Contain exposed stockpiles of soil and other material	This mitigation measure will be fulfilled during construction.

Mitigation Measure and APM	Status
AQ-APM-03: Use methods to minimize mud and dust tracking on paved roads	This mitigation measure will be fulfilled during construction. A Dust Control Plan was submitted to the CPUC on September 14, 2009 and approved by the CPUC on January 20, 2010. Conditions of the Dust Control Plan will be implemented and enforced throughout the Project.
AQ-APM-04: Encourage carpooling to job sites	The SWEAP video, approved by the CPUC on March 15, 2010, encourages carpooling. This video will be shown to all Project Personnel and enforced throughout all phases of the Project.
AQ-APM-05: Minimize vehicle idling time with common sense approach	The SWEAP video was approved by the CPUC on March 15, 2010. The video addresses vehicle idling. The video will be shown to all Project personnel and enforced throughout all phases of the Project.
AQ-APM-05: Conduct briefings on common sense vehicle use	This mitigation measure will be implemented during construction.
H-01k: File hazardous substance plan within 1 year of license issuance	This mitigation measure is not applicable for Link 4. Work will not occur on United States Forest Service Lands.
H-01k: Confine vehicles to roads identified in a Road and Traffic Management Plan	This mitigation measure is not applicable for Link 4. Work will not occur on United States Forest Service Lands.
H-01k: File an Erosion Control Measure Plan prior to construction	This mitigation measure is not applicable for Link 4. Work will not occur on United States Forest Service Lands.
H-01k: Submit NEPA analysis prior to ground disturbing work	This mitigation measure is not applicable for Link 4. Work will not occur on United States Forest Service Lands.
H-01k: Enter into a cost recovery agreement with the Forest Service	This mitigation measure is not applicable for Link 4. Work will not occur on United States Forest Service Lands.
H-01k: File a Water Resources Management Plan within 6 months of license issuance	This mitigation measure is not applicable for Link 4. Work will not occur on United States Forest Service Lands.
H-01k: File a plan for ground and surface water management within 1 year of license issuance	This mitigation measure is not applicable for Link 4. Work will not occur on United States Forest Service Lands.
H-01l: Submit a site-specific sediment control plan and SWPPP prior to construction	This mitigation measure is not applicable for the Link 4 NTP. Work will not occur on United States Forest Service Lands.
H-02d: Provide vehicle and equipment maintenance log monthly	This mitigation measure will be implemented during construction. A vehicle and equipment maintenance log will be provided to the CPUC and BLM once monthly during project construction.
H-04b: Manage blasting near wells or springs with a Blasting Plan for each site	Blasting is not anticipated on Link 4, however, if blasting is deemed necessary during construction, SDG&E will comply with this measure as defined and prepare a location specific blasting plan will be submitted.
H-06a: Determine which towers require scour protection during design phase	A Geotechnical Investigation Report for Link 4, Underground, was submitted to the CPUC for review on April 19, 2010 and was approved June 18, 2010. The final project design is based on the findings of this report. A Geotechnical Investigation Report for Link 4, Bauer Bridge Construction, was submitted to the CPUC and approved on September 30, 2010. The final project design is based on the findings of this report.
H-06a: Submit evaluation and design plans 60 prior to constructing towers	A Geotechnical Investigation Report for Link 4, Underground, was submitted to the CPUC for review on April 19, 2010 and was approved June 18, 2010. The final project design is based on the findings of this report. A Geotechnical Investigation Report for Link 4, Bauer Bridge Construction, was submitted to the CPUC and approved on September 30, 2010. The final project design is based on the findings of this report.
H-07a: Submit a Hazardous Substance Control and Emergency Response Plan 60 days prior to construction	A memo was submitted to the CPUC on Wednesday September 15, 2010 documenting compliance with this mitigation measure and included the Waste Discharge Identification numbers assigned by the California State Water Resources Control Board. SDG&E submitted a SWPPP for Link 4 which includes emergency response information to the CPUC on September 24, 2010.

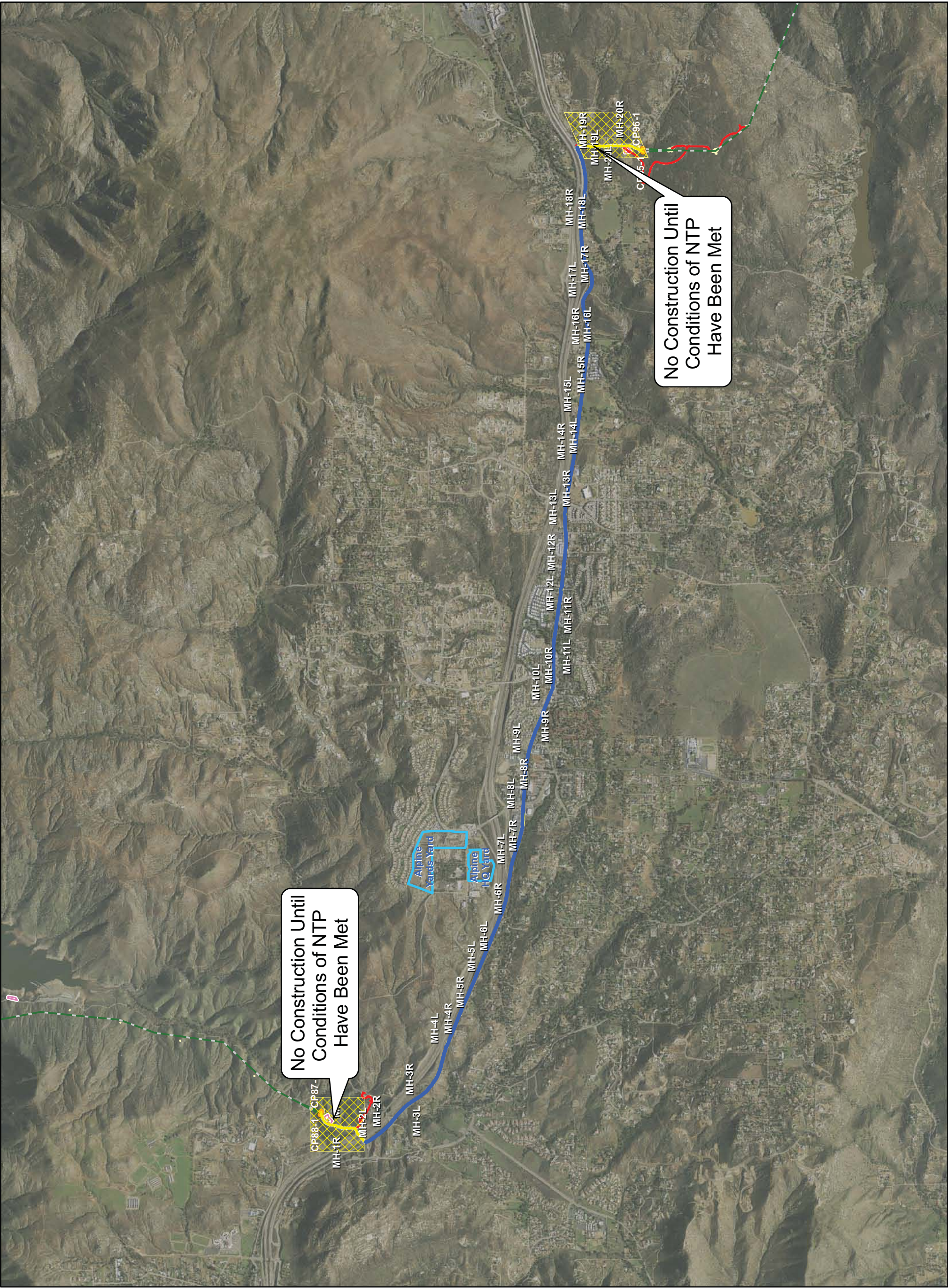
Mitigation Measure and APM	Status
H-08a: Submit design plans for burying line 60 days prior to construction	The I-8 Underground Segment of the transmission line crosses two existing creeks, Viejas Creek on the eastern end and Chocolate Canyon Creek near MP 95 on Alpine Blvd. An access road on the western end of Link 4 also crosses a tributary to Chocolate Canyon Creek. A Memorandum and Engineering Design drawings were sent to the CPUC on March 3, 2010 documenting compliance with this mitigation measure and was approved by the CPUC on August 4, 2010.
WQ-APM-01: Minimize disturbance to water resources	SDG&E has designed the underground alignment to avoid direct impacts to water resources by either boring beneath jurisdictional resource areas or attaching the conduit to existing structures that cross water resources. SDG&E's biological monitors and environmental inspectors will ensure that construction crews do not disturb water resources that occur adjacent to project areas during construction. See WQ-APM-05 for additional information.
WQ-APM-02: Avoid sensitive water features	A memo was submitted to the CPUC documenting compliance with Mitigation Measure WQ-APM-2, Task 1, on August 30, 2010.
WQ-APM-03: Clearly mark restricted sites prior to construction	Specific sites as identified by authorized agencies will be staked and flagged by a qualified biologist prior to construction and documented in the weekly monitoring report. Surface disturbing activities will not be allowed to begin until the site has been clearly marked, fenced or flagged to delineate those areas specifically allowed for use and those that are restricted when performed adjacent to these sites.
WQ-APM-03: Train construction personnel to recognize markers	The SWEAP video approved by the CPUC on March 15, 2010 and includes recognition of markers and equipment movement restrictions. This SWEAP will be shown to all project personnel and enforced throughout all phases of the Project.
WQ-APM-04: Maintain adequate distance from stream banks	This mitigation measure will be fulfilled during construction.
WQ-APM-04: Use existing bridges to cross major streams	This mitigation measure will be fulfilled during construction.
WQ-APM-04: Span riparian areas where feasible	No overhead stringing of conductor will occur as part of construction of Link 4.
WQ-APM-04: Prepare and implement erosion control BMPs per the SWPPP	The pre-construction component of this mitigation measure has been completed. A Notice of Intent was submitted to the State Water Resources Control Board on May 5, 2010. A Waste Discharge Identification Number (937C358170) was received on May 18, 2010. A SWPPP has been developed and was submitted to the CPUC on September 24, 2010. Qualified Stormwater monitors will be on-site during construction monitoring erosion control. This will be documented in the weekly monitoring report.
WQ-APM-04: Select upland pull sites to minimize disturbance to water resources	This mitigation measure does not apply to Link 4. No pull sites will be included as part of this work.
WQ-APM-04: Do not place structures in streambeds or drainage channels	A memo was submitted to the CPUC documenting compliance with Mitigation Measure WQ-APM-4, Task 6, on August 30, 2010. To the extent feasible, structures were not designed to be located within streambeds and drainage features. The locations of the structures are shown in the Project Modification Report Map Book, which was submitted to the CPUC on May 14, 2010 and approved by CPUC and BLM through a Determination Memorandum dated September 22, 2010.
WQ-APM-05: Construct stream crossings and develop a mitigation and restoration plan	The I-8 Underground Segment of the transmission line crosses two existing creeks on Alpine Blvd. Alpine Boulevard was constructed to cross the existing creek via concrete box culverts, with entrance slab and exit slab. The duct banks for both circuits will cross the existing creek via bridge attachment originally designed to meet scour and erosion protection. A Geotechnical Investigation Report for Link 4, Bauer Bridge Construction, was approved by the CPUC on September 30, 2010. Engineering design calls for attaching the proposed duct banks on both sides of the existing bridge under an existing creek. The bottom of the duct bank will match existing deck, and there is no impact to flood control capacity. This design was reviewed and approved by the County of San Diego, Department of Public Work. A memorandum and Engineering Drawings were submitted to the CPUC on March 3, 2010 documenting compliance with this mitigation measure.
WQ-APM-06: Avoid designated surface water protection areas	The final project alignment is in the vicinity of the following source water; Lake Morena, Barrett Lake, El Capitan Reservoir, and San Vicente Reservoir. All these source waters will be avoided.


Mitigation Measure and APM	Status
WQ-APM-06: No diversions, detention, retention, or consumption of surface waters	The Water Use Study submitted to the CPUC on February 22, 2010 and the Project Modification Report submitted to the CPUC on May 14, 2010 and approved by the BLM and CPUC through a Determination Memorandum on September 22, 2010 addressed the use of surface water for the project. This mitigation measure will be fulfilled during construction.
WQ-APM-06: Conduct interviews with affected landowners prior to construction	Groundwater supplies will not be used during project construction; therefore this mitigation measure is not applicable.
WQ-APM-06: Negotiate with landowners to provide alternative water supplies	Groundwater supplies will not be used during project construction; therefore this mitigation measure is not applicable.
WQ-APM-08: Obtain permits prior to discharging groundwater into storm drains	Groundwater supplies will not be used during project construction; therefore this mitigation measure is not applicable.
WQ-APM-08: Contain and sample if dewatering and then release water according to test results	While groundwater intrusion in the trench is not anticipated on Link 4, if ground water is encountered, it will be handled according to federal, state and local regulations. Water will be pumped into either a tank truck or a baker tank and tested for proper disposal.
WQ-APM-09: Storing fuels and hazardous materials prohibited near wells	This mitigation measure will be fulfilled during construction.
WQ-APM-10: Minimize stream bank erosion	The I-8 Underground Segment of the transmission line crosses two existing creeks, Viejas Creek on the eastern end and Chocolate Canyon Creek near MP 95 on Alpine Blvd. An access road on the western end of Link 4 also crosses a tributary to Chocolate Canyon Creek. A Memorandum and Engineering Design drawings were sent to the CPUC on March 3, 2010 documenting compliance with this mitigation measure and was approved by the CPUC on August 4, 2010. Final construction plans were submitted to the CPUC on June 8, 2010.
WQ-APM-11: Test groundwater levels with pilot borings along underground portion of project	Groundwater level information along Link 4 was addressed in the Geotechnical Investigation Report for Link 4, Underground, submitted to CPUC on April 19, 2010 and approved on June 18, 2010. According to this report, no locations along Link 4 have groundwater at a depth of less than 8 feet below ground surface.
WQ-APM-11: Submit letter report with test drilling results	Groundwater level information along Link 4 was addressed in the Geotechnical Investigation Report for Link 4, Underground, submitted to CPUC on April 19, 2010 and approved on June 18, 2010. According to this report, no locations along Link 4 have groundwater at a depth of less than 8 feet below ground surface.
WQ-APM-13: Dispose trash into enclosed containment	A trash enclosure will be provided during construction.
WQ-APM-13: Remove hazardous materials to a hazardous waste facility and promptly clean up if released onto ground	This mitigation measure will be fulfilled during construction.
WQ-APM-14: Obtain NPDES permit and implement a SWPPP	A SWPPP has been developed and NPDES permits have been obtained. The SWPPP was submitted to the CPUC on September 24, 2010. The conditions of the permits and SWPPP will be implemented and enforced during the Project to prevent and avoid hydrologic impacts.
WQ-APM-15: Adjust route of access roads to avoid sensitive features	See BIO-APM-05
WQ-APM-15: Use existing roads or cross-country access routes	This mitigation measure will be fulfilled during construction.
WQ-APM-15: Clearly mark approved construction traffic routes	A Traffic Control Plan has been developed and submitted to the County of San Diego for approval. A Traffic Control Permit was issued by the County of San Diego (Permit number 0910-77). The traffic control permit was submitted to the CPUC for their records on September 24, 2010. The Traffic Control Permit addresses traffic and transportation issues related to the construction of the 230 kV underground portion of the Sunrise Powerlink including flagging of construction traffic routes. This mitigation measure will be implemented during construction.
WQ-APM-16: Conduct site-specific assessment where sensitive water resources cannot be avoided	Biological, hydrology and cultural resource assessments were completed in accordance with the ACOE and CDFG guidelines. An ACOE 404 Nationwide 12, CDFG 1600 Streambed Alteration Agreement and Regional Water Quality Control Board 401 Water Quality Certification were submitted March 30, 2010.

Mitigation Measure and APM	Status
WQ-APM-16: Locate staging/storage areas outside of riparian areas	SDG&E has located staging/storage areas for equipment and materials outside of riparian areas.
WQ-APM-16: Obtain a Streambed Alteration Agreement when constructing new access through streambeds	Biological, hydrology and cultural resource assessments were completed in accordance with the ACOE and CDFG guidelines. An ACOE 404 Nationwide 12, CDFG 1600 Streambed Alteration Agreement and Regional Water Quality Control Board 401 Water Quality Certification permit applications were submitted March 30, 2010.
G-03a: Submit design-level geotechnical studies 60 day prior to final project design	A Geotechnical Investigation Report for Link 4, Underground, was submitted to the CPUC for review on April 19, 2010 and was approved June 18, 2010. A site-specific Geotechnical Investigation Report for the Bauer Bridge was approved by the CPUC on September 30, 2010. The final project design is based on the findings of these reports.
G-04a: Submit site-specific seismic analyses 60 days prior to final project design	A Geotechnical Investigation Report for Link 4, Underground, was submitted to the CPUC for review on April 19, 2010 and was approved June 18, 2010. A site-specific Geotechnical Investigation Report for the Bauer Bridge was approved by the CPUC on September 30, 2010. The final project design is based on the findings of these reports.
G-04b: Submit liquefaction studies 60 days prior to final project design	A Geotechnical Investigation Report for Link 4, Underground, was submitted to the CPUC for review on April 19, 2010 and was approved June 18, 2010. A site-specific Geotechnical Investigation Report for the Bauer Bridge was approved by the CPUC on September 30, 2010. The final project design is based on the findings of these reports.
G-06a: Submit slope stability analyses 60 days prior to construction	A Geotechnical Investigation Report for Link 4, Underground, was submitted to the CPUC for review on April 19, 2010 and was approved June 18, 2010. A site-specific Geotechnical Investigation Report for the Bauer Bridge was approved by the CPUC on September 30, 2010. The final project design is based on the findings of these reports.
GEO-APM-01: No widening or grading of existing access roads if soil is sensitive to disturbance	The FEIR/EIS identified sensitive soils as "natural sand sources that supply the material for sand dune systems throughout the ABDSP. The project no longer impacts ABDSP and there are no sand dune systems along the project route; therefore, this mitigation measure does not apply.
GEO-APM-02: Minimize soil disturbance or return to pre-construction contours and condition	This mitigation measure will be implemented during construction.
GEO-APM-03: Avoid placing structures in areas of high shrink/swell potential	A report titled, "Geotechnical and Geologic Hazards Investigation Report" was submitted to CPUC for review and approval on April 19, 2010 and approved on September 2, 2010. No areas of high shrink/swell were identified in the report; therefore, this measure does not apply.
GEO-APM-04: Place structures in geologically stable areas	A Geotechnical Investigation Report for Link 4, Underground, was submitted to the CPUC for review on March 10, 2010 and was approved June 18, 2010. The geotechnical report addresses structure placement avoidance in areas of high shrink/swell potential. A Geotechnical Investigation Report for Link 4, Bauer Bridge Construction, was approved by the CPUC on September 30, 2010. The final project design is based on the findings of this report.
GEO-APM-05: Implement construction to avoid or minimize new soil disturbance	The pre-construction portion of this measure is complete. Project construction activities are designed to avoid or minimize new disturbance, erosion on manufactured slopes, and off-site degradation from accelerated sedimentation. During construction, impacts from accelerated sedimentation will also be minimized. Final Construction Design Plans were submitted to the CPUC on June 8, 2010.
GEO-APM-05: Maintain cut and fill slopes with erosion control and repair	This mitigation measure will be fulfilled during construction.
GEO-APM-06: Perform surface restoration for erosion control and re-vegetation	Erosion control measures and restoration efforts to control erosion at disturbed locations are covered under the Storm Water Pollution Prevention Plan. A SWPPP was submitted to CPUC on September 24, 2010. This will be implemented post construction.
GEO-APM-08: Remove or stabilize boulders and span structures over landslide areas	This mitigation measure is not applicable to Link 4. Construction along Link 4 will include underground transmission construction and erection of transition poles at both ends of the Link. The transition poles are not downhill from boulders.

Mitigation Measure and APM	Status
GEO-APM-09: Implement field mitigation efforts if paleontological resources are encountered	This mitigation measure will be fulfilled during construction.
GEO-APM-09: Consult with agencies if paleontological resources cannot be avoided	This mitigation measure will be fulfilled during construction.
PSU-APM-01: Coordinate with utility providers	Coordination occurred with utility providers with underground facilities located along Alpine Boulevard. SDG&E met with Barb Hanagan of Golden State Utility company regarding Time Warner As-Built on September 17, 2007. SDG&E met with Rick Miller of Network Infrastructure Services regarding Level 3 Communications on November 7, 2007. SDG&E met with Dave Williams and Mark Perrett of the County of San Diego regarding sewer conflicts on January 19 and May 11, 2010. SDG&E met with Courtney Mael, Dan Black, and R Bier of Padre Dam Water Authority on January 20 and August 5, 2010. SDG&E met with Mark Perrett of the County of San Diego regarding Alpine Sanitation District Sewer System Upgrades on July 22, 2010. A memo was submitted to the CPUC for the administrative record documenting compliance with Mitigation Measure PSU-APM-1 on October 13, 2010.
PSU-APM-02: Notify USA 48 hours prior to earth-disturbing activities	This mitigation measure will be implemented during construction.
PSU-APM-03: Minimize disruption to response times and access for emergency and police services	A Traffic Control Permit was issued by the County of San Diego (Permit number 0910-77) on September 17, 2010 and addresses emergency vehicle access, lane closures, and other construction activities. This permit was submitted to the CPUC on September 24, 2010. This mitigation measure will be implemented during construction.
S-02a: Provide copies of posted public notices of planned outages	This mitigation measure will be implemented during construction. Copies of notices and dates of public notification shall be provided to the CPUC and BLM.
S-02b: Submit documentation prior to construction of the underground transmission line	The Project Modification Report submitted on May 14, 2010 and approved by CPUC and BLM through a Determination Memorandum dated September 22, 2010 discusses changes to the final design of the alignment and incorporates avoidance underground utilities. Final construction plans demonstrating compliance this measure were submitted to the CPUC on June 8, 2010 and approved on November 4, 2010. A memo was submitted to the CPUC for the administrative record documenting compliance with Mitigation Measure S-2b on October 13, 2010.
S-03a: Provide documentation to show amount of waste recycled	This mitigation measure will be implemented during and following the completion of construction.
S-03b: Coordinate with water districts	Limited water will be used for construction activities on Link 4. SDG&E will continue its coordination efforts to obtain approval to use reclaimed water on the project. Potable water will be used as needed on Link 4 until such approval is received.
S-03b: Provide letter 60 days prior to construction describing availability of reclaimed water and efforts to obtain for use	A Water Use Study describing the availability of reclaimed water was submitted on February 22, 2010. A discussion of water use and availability for the project was included as part of the Project Modification Report (PMR). The PMR was submitted to the CPUC on May 14, 2010 and approved by the BLM and CPUC through a Determination Memorandum dated September 22, 2010.
F-01a: Submit draft Construction Fire Prevention Plan 90 days prior to construction	A Construction Fire Plan was acknowledged by the CAL FIRE Chief and was approved by the CPUC on February 2, 2010.
F-01a: Receive approval of final Plan 30 days prior to construction	A Construction Fire Plan was acknowledged by the CAL FIRE Chief and approved by the CPUC on January 20, 2010.
F-01a: Implement Fire Plan during construction and maintenance	The pre-construction component of this measure has been completed. A Construction Fire Plan was acknowledged by the CAL FIRE Chief and was approved by the CPUC on January 20, 2010. This Plan has integrated the requirements of this mitigation measure and will be implemented and enforced during construction.

Mitigation Measure and APM	Status
F-01c: Do not obstruct firefighting equipment or crews	<p>A Traffic Impact Analysis was performed and incorporates coordination of construction schedules, lane closures, and other activities with installation of the project with emergency and police services to ensure that disruption to response times and access is minimized.</p> <p>A Traffic Control Permit was issued by the County of San Diego (Permit number 0910-77) on September 17, 2010 and addresses emergency vehicle access. This permit was submitted to the CPUC on September 24, 2010.</p> <p>This will be implemented during construction.</p>
F-01c: Coordinate fire suppression activities and unobstruct access roads at all times	This mitigation measure will be implemented during construction.
F-01c: Cease construction in work areas if fire within 1,000 feet	This mitigation measure will be implemented during construction.
F-01c: Contact dispatch centers 2 days prior to helicopter use	No helicopter use will occur as part of construction of Link 4; therefore this measure is not applicable. If helicopter use is later determined to be necessary on Link 4, dispatch centers will be notified in advance.
F-01d: Clear and spread onsite dead and decaying vegetation prior to construction and maintenance	No dead and decaying vegetation will be spread as part of work along Link 4; therefore this mitigation measure does not apply.





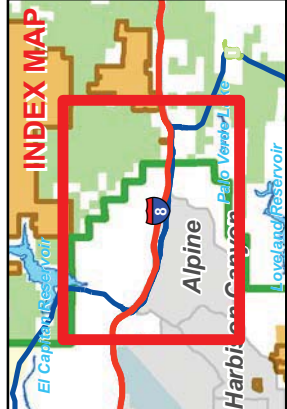
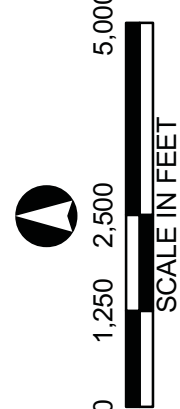
Legend

- Cable Poles
- Alpine Blvd. Portion of UG Alignment
- Sunrise 230kV Overhead
- New Road - Proposed Road Construction, Permanent Impact
- Grading Limits
- No Construction Until Conditions of NTP Have Been Met

Sunrise PowerLink

230 KV

Underground Alignment



No Construction Until
Conditions of NTP
Have Been Met

No Construction Until
Conditions of NTP
Have Been Met