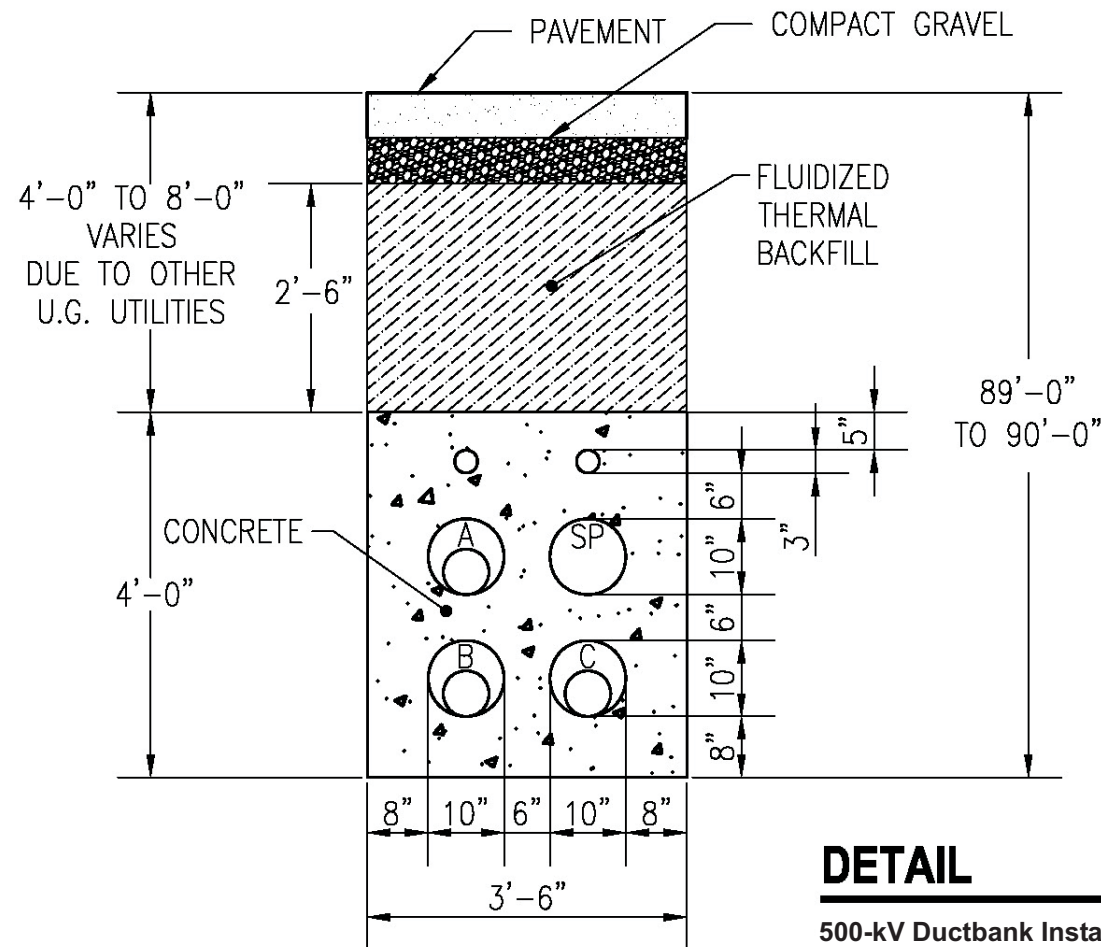


NOTE:

1. LARGE 500KV VAULTS COULD MAKE IT IMPRACTICAL TO PLACE 3 ADJACENT DUCTBANKS AS SHOWN IN A TYPICAL 2-LANE STREET.
2. FEASIBILITY AND LOCATION OF DUCTBANKS WITHIN STREETS DEPENDS ON QUANTITY AND LOCATION OF OTHER EXISTING UNDERGROUND UTILITIES.



SECTION

Street Cross-section
 500-kV Ductbank Installation
 (3 Ductbanks Shown for 3 Cables/PH)

DETAIL

500-kV Ductbank Installation

Source: RW Beck, 2005