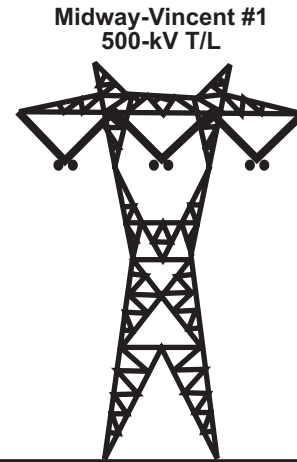
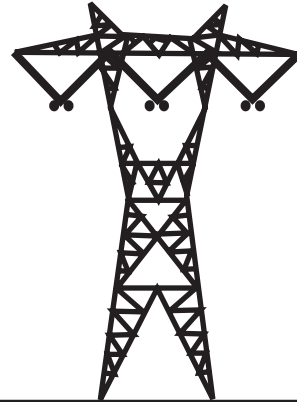


**Existing
(Facing Vincent Substation)**



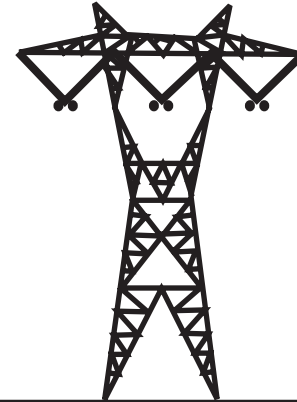
**Proposed
(Facing Vincent Substation)**

Proposed Antelope-Vincent
Seg. 2 500-kV T/L

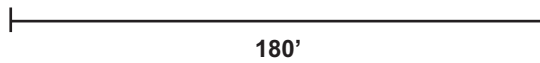


Existing North
ROW
Edge

Midway-Vincent #1
500-kV T/L



Existing South
ROW
Edge



180'



Source: SCE, 2005.

Figure B.2-19

**Existing and Proposed ROW Configurations
for Mile S2-14.0 to Mile S2-14.8**