

- Substation
- Ceressey-Gallo Power Line Route
- 5 Mile Buffer of the Power Line Route
- City Boundary

- State Highway
- CNDDDB Occurrence, Occurrence Number**
- Specific Wildlife Occurrence (0 - 80 meter accuracy)
- ▲ Non-specific Wildlife Occurrence (Greater than 0.20 mile accuracy)
- ▲ Non-specific Plant Occurrence (Greater than 0.20 mile accuracy)
- ▲ Non-specific Sensitive Community Occurrence (Greater than 0.20 mile accuracy)

- Central Valley steelhead Critical Habitat
- Critical Habitat

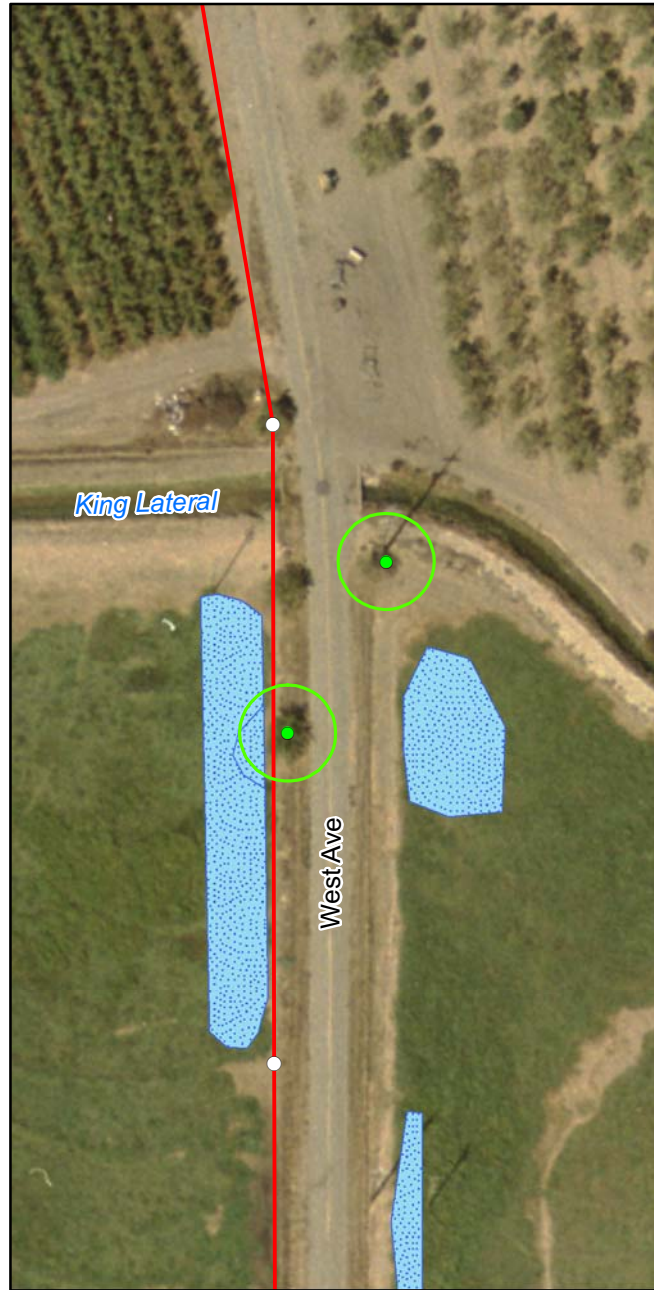
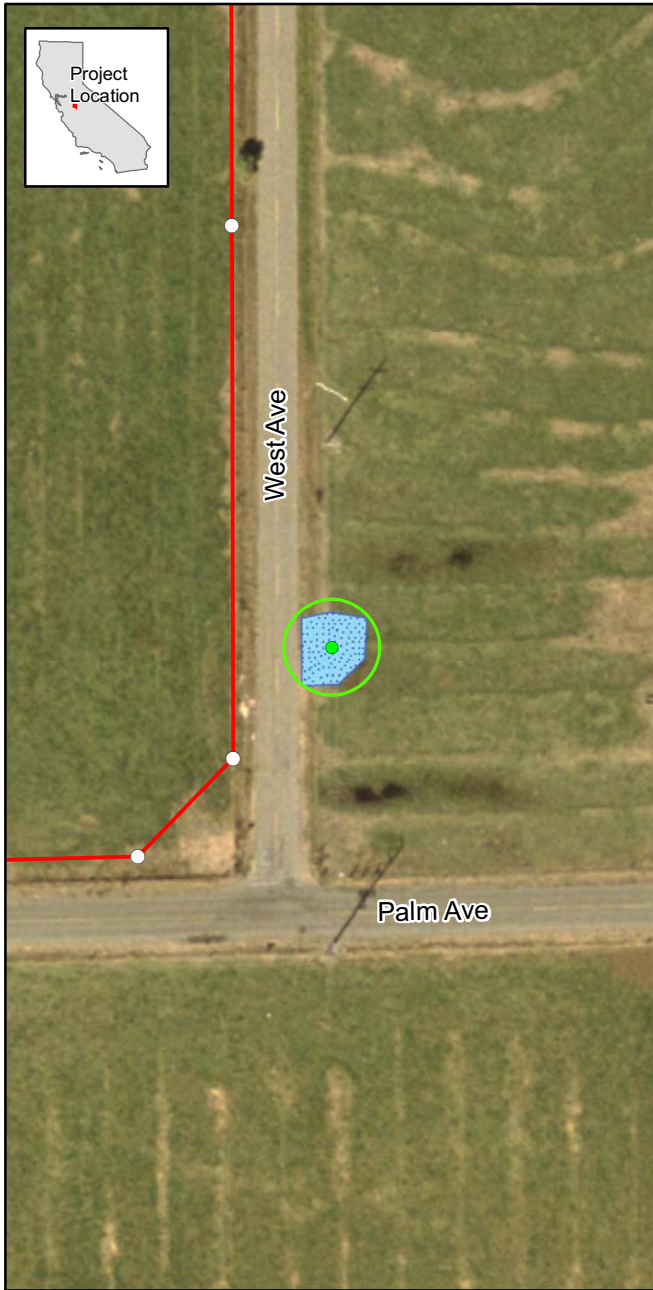


**FIGURE 3.4-1**  
 CNDDDB Occurrences and Critical Habitat Within 5 Miles of the Power Line Route Ceressey-Gallo 115 kV Power Line Project

0 1 2 Miles

Scale: 1:150,000





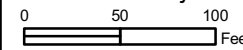
- Preliminary Power Pole Layout
- Preliminary Power Line Alignment
- ▭ Cressey Substation
- Elderberry Bush with Stems Greater than 1 Inch
- 25 Foot Buffer of Elderberry Bush with Stems Greater than 1 Inch
- ▨ Seasonally Ponded Area

Note: The 25 foot elderberry bush buffer does not prevent construction traffic from driving on the roads.



Information is preliminary and subject to change with final engineering.

**FIGURE 3.4-2**  
 Preliminary Power Pole Layout and Elderberry Bushes with Stems Greater than 1 Inch  
 Cressey-Gallo 115 kV  
 Power Line Project



Scale:  
1:1,200