



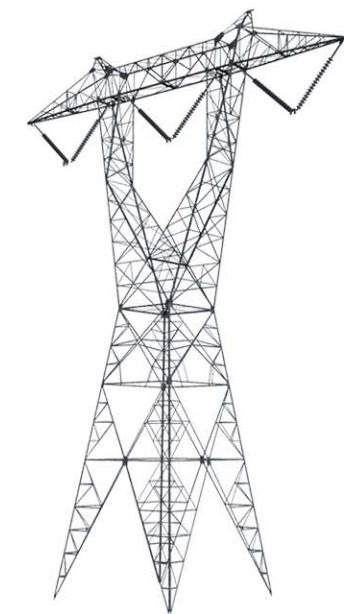
Existing Condition - Transmission line corridor in the foreground and Little San Bernardino Mountains and Desert Hot Springs in the background. Photograph taken 12/11/03 at 11:27 a.m. using a 50mm focal length.



Viewpoint located north of Palm Springs at residence south of Dillon Road looking north-northeast towards proposed project, approximately 1/4 mile from the tower in center of view.



Simulation - Transmission line corridor with proposed Devers-Palo Verde No. 2 500kV lattice steel structure transmission line. This image is most accurately viewed at a distance of approximately 11 inches from the page to match the actual field of view.



Typical 500kV single-circuit lattice steel tower used in simulations. Proposed towers are simulated to match existing tower heights and spans.

Figure 5-2