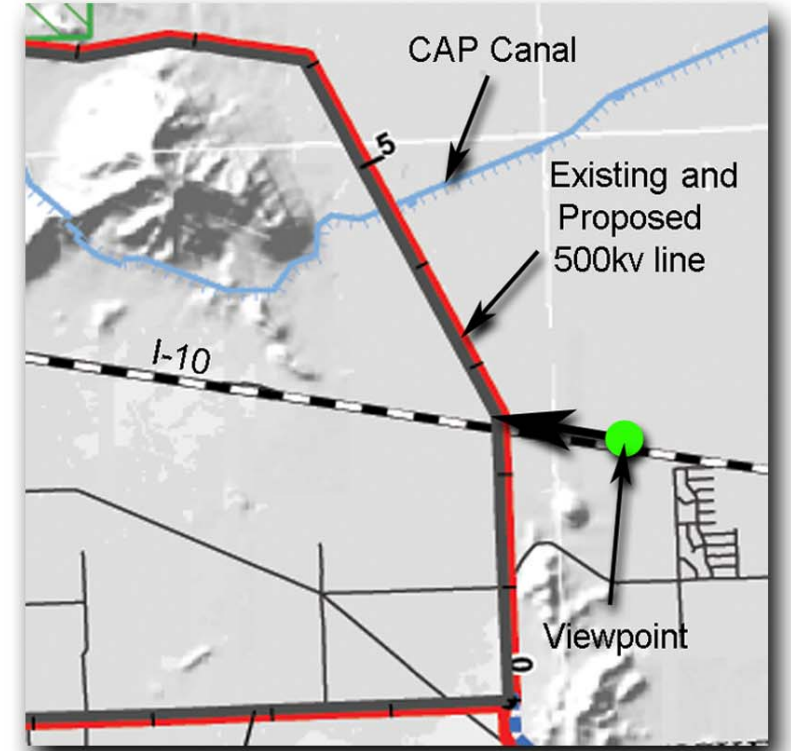




Existing Conditions - Transmission line corridor crossing Interstate 10 west of Tonopah, Arizona.
 Photograph taken 7/26/04 at 12:26 p.m. using a 50mm focal length.

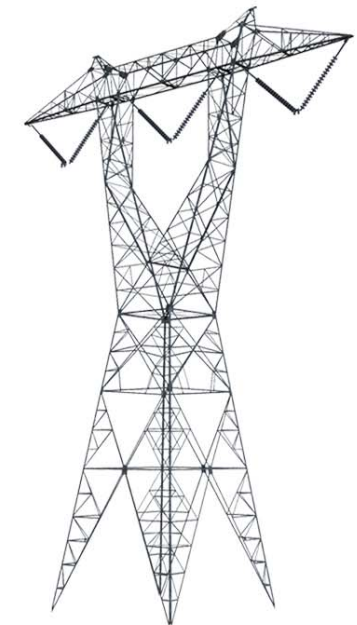


Viewpoint located along Interstate 10 west of Phoenix, Arizona looking west across the proposed project, approximately 0.6 mile from route crossing.



Simulation - Transmission line corridor crossing Interstate 10 west of Tonopah, Arizona with proposed Devers-Palo Verde No. 2 500kV lattice steel structure transmission line.

This image is most accurately viewed at a distance of approximately 11 inches from the page to match the actual field of view.



Typical 500kV single-circuit lattice steel tower used in simulations.
 Proposed towers are simulated to match existing tower heights and spans.

Figure 5-3