



Existing Condition - Transmission line corridor within open space/park image type adjacent to residential image type.  
 Photograph taken 1/22/04 at 12:23 pm using a 50mm focal length.

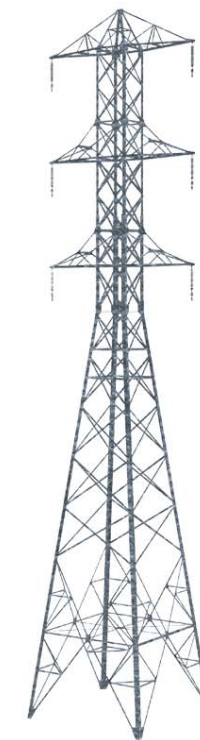


Viewpoint located in the city of Beaumont east of Oak View Drive, looking west-southwest towards proposed project. Viewpoint approximately 1/16 mile from the tower in the center of view.



Simulation - Transmission line corridor with two 230kV single-circuit towers (lattice and H-frame) removed and proposed 230kV double-circuit lattice steel structure transmission line.

This image is most accurately viewed at a distance of approximately 11 inches from the page to match the actual field of view.



Typical 230kV double-circuit lattice steel tower used in simulations. Proposed towers are simulated to match existing tower heights. Tower locations are conceptual.

Figure 5-5