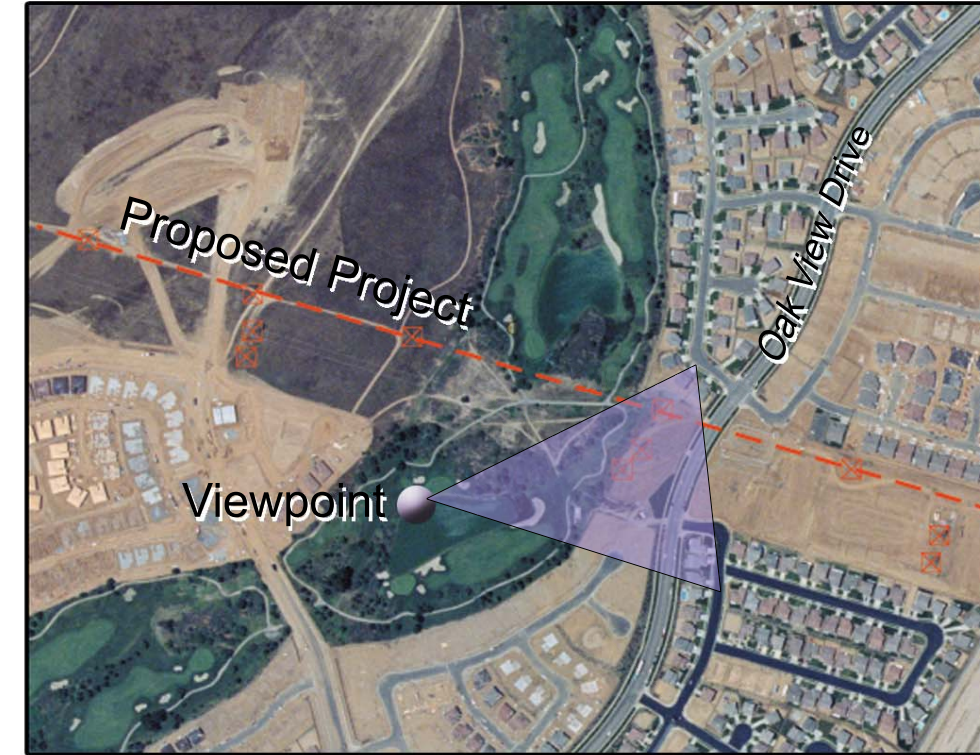




Existing Condition - Transmission line corridor within open space/park image type adjacent to residential image type.
 Photograph taken 1/22/04 at 1:01 pm using a 50mm focal length.

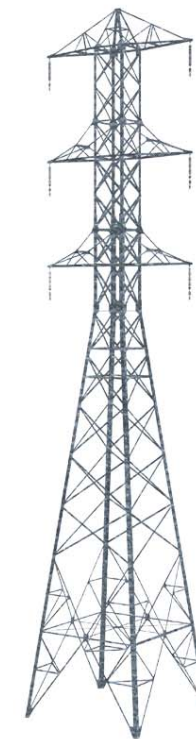


Viewpoint located in the city of Beaumont at Oak Valley Golf Course south of transmission line, looking east-northeast towards proposed project. Viewpoint approximately 1/8 mile from the tower in the center of view.



Simulation - Transmission line corridor with two 230kV single-circuit towers (lattice and H-frame) removed and proposed 230kV double-circuit lattice steel structure transmission line.

This image is most accurately viewed at a distance of approximately 11 inches from the page to match the actual field of view.



Typical 230kV double-circuit lattice steel tower used in simulations. Proposed towers are simulated to match existing tower heights. Tower locations are conceptual.

Figure 5-6