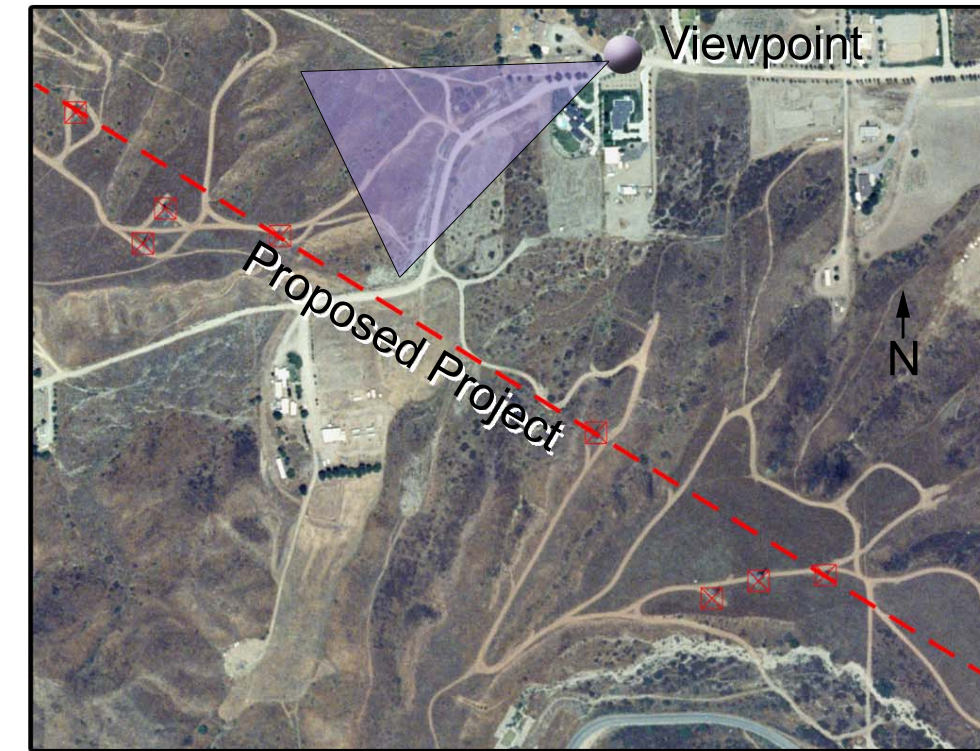




Existing Condition - Transmission line corridor within San Timoteo Canyon adjacent to residential image type.
 Photograph taken 1/22/04 at 2:13 pm using a 50mm focal length.

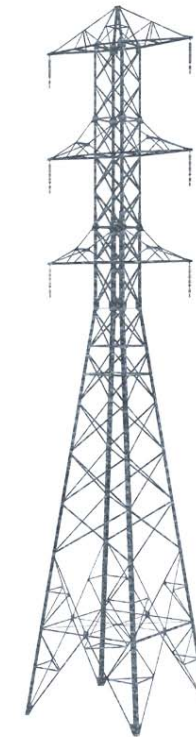


Viewpoint located in the city of Calimesa off of San Timoteo Canyon Road north of transmission line, looking west-southwest towards proposed project. Viewpoint approximately 1/4 mile from the tower in the center of view.



Simulation - Transmission line corridor with two 230kV single-circuit lattice towers removed and proposed 230kV double-circuit lattice steel structure transmission line.

This image is most accurately viewed at a distance of approximately 11 inches from the page to match the actual field of view.



Typical 230kV double-circuit lattice steel tower used in simulations. Proposed towers are simulated to match existing tower heights. Tower locations are conceptual.

Figure 5-7