

**NATIVE AMERICAN HERITAGE COMMISSION**

915 CAPITOL MALL, ROOM 364  
SACRAMENTO, CA 95814  
(916) 653-6251  
Fax (916) 657-5390  
Web Site [www.nahc.ca.gov](http://www.nahc.ca.gov)  
e-mail: [ds\\_nahc@pacbell.net](mailto:ds_nahc@pacbell.net)



October 18, 2010

Ms. Billie Blanchard, Environmental Planner

**CALIFORNIA PUBLIC UTILITIES COMMISSION****c/o Aspen Environmental Group**

235 Montgomery Street, Suite 935  
San Francisco, CA 94102-3002

Re: SCH#2005101104 CEQA Notice of Preparation (NOP): draft Environmental Impact Report (DEIR) for the Devers-Palo Verde No. 2 Transmission Line Project – Colorado River Substation Expansion; located in located on 90-acres about 15 miles west of the City of Blythe and 1.5 miles south of U.S. Interstate Highway 10, 4.75 miles east of Wiley Well Road; Riverside County, California.

Dear Ms. Blanchard:

The Native American Heritage Commission (NAHC) is the state 'trustee agency' pursuant to Public Resources Code §21070 for the protection and preservation of California's Native American Cultural Resources. (Also see *Environmental Protection Information Center v. Johnson* (1985) 170 Cal App. 3<sup>rd</sup> 604). The California Environmental Quality Act (CEQA - CA Public Resources Code §21000-21177, amendment effective 3/18/2010) requires that any project that causes a substantial adverse change in the significance of an historical resource, that includes archaeological resources, is a 'significant effect' requiring the preparation of an Environmental Impact Report (EIR) per the California Code of Regulations §15064.5(b)(c)(f) CEQA guidelines). Section 15382 of the CEQA Guidelines defines a significant impact on the environment as "a substantial, or potentially substantial, adverse change in any of physical conditions within an area affected by the proposed project, including ... objects of historic or aesthetic significance. The lead agency is required to assess whether the project will have an adverse impact on these resources within the 'area of potential effect (APE)', and if so, to mitigate that effect. State law also addresses Native American Religious Expression in Public Resources Code §5097.9.

The Native American Heritage Commission did perform a Sacred Lands File (SLF) search in the NAHC SLF Inventory, established by the Legislature pursuant to Public Resources Code §5097.94(a) and Native American Cultural Resources were identified in the Area of Potential Effect (APE). Therefore it is important to do early consultation with Native American tribes in your area as the best way to avoid unanticipated discoveries once a project is underway and to learn of any sensitive cultural areas. Enclosed are the names of the culturally affiliated tribes and interested Native American individuals that the NAHC recommends as 'consulting parties,' for this purpose, that may have knowledge of the religious and cultural significance of the historic properties in the project area (e.g. APE). A Native American Tribe or Tribal Elder may be the only source of information about a cultural resource.. Also, the NAHC recommends that a Native American Monitor or Native American culturally knowledgeable person be employed whenever a professional archaeologist is employed during the 'Initial Study' and in other phases of the environmental planning processes.

Furthermore the NAHC recommends that you contact the California Historic Resources Information System (CHRIS) of the Office of Historic Preservation (OHP), for information on recorded archaeological data. This information is available at the Eastern Information Center at UC Riverside (951) 827-5745.

Consultation with tribes and interested Native American tribes and interested Native American individuals, as consulting parties, on the NAHC list, should be conducted in compliance with the requirements of federal NEPA (42 U.S.C. 4321-43351) and Section 106 and 4(f) of federal NHPA (16 U.S.C. 470 [f] *et seq.*), 36 CFR Part 800.3, the President's Council on Environmental Quality (CSQ; 42 U.S.C. 4371 *et seq.*) and NAGPRA (25 U.S.C. 3001-3013), as appropriate. The 1992 *Secretary of the Interior's Standards for the Treatment of Historic Properties* were revised so that they could be applied to all historic resource types included in the National Register of Historic Places and including *cultural landscapes*. Consultation with Native American communities is also a matter of environmental justice as defined by California Government Code §65040.12(e).

Lead agencies should consider avoidance, as defined in Section 15370 of the California Environmental Quality Act (CEQA) when significant cultural resources could be affected by a project. Also, Public Resources Code Section 5097.98 and Health & Safety Code Section 7050.5 provide for provisions for accidentally discovered archeological resources during construction and mandate the processes to be followed in the event of an accidental discovery of any human remains in a project location other than a 'dedicated cemetery. Discussion of these should be included in your environmental documents, as appropriate.

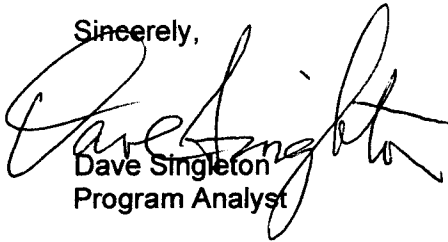
The authority for the SLF record search of the NAHC Sacred Lands Inventory, established by the California Legislature, is California Public Resources Code §5097.94(a) and is exempt from the CA Public Records Act (c.f. California Government Code §6254.10). The results of the SLF search are confidential. However, Native Americans on the attached contact list are not prohibited from and may wish to reveal the nature of identified cultural resources/historic properties. Confidentiality of 'historic properties of religious and cultural significance' may also be protected under Section 304 of the NHPA or at the Secretary of the Interior's discretion if not eligible for listing on the National Register of Historic Places. The Secretary may also be advised by the federal Indian Religious Freedom Act (cf. 42 U.S.C. 1996) in issuing a decision on whether or not to disclose items of religious and/or cultural significance identified in or near the APE and possibly threatened by proposed project activity.

CEQA Guidelines, Section 15064.5(d) requires the lead agency to work with the Native Americans identified by this Commission if the initial Study identifies the presence or likely presence of Native American human remains within the APE. CEQA Guidelines provide for agreements with Native American, identified by the NAHC, to assure the appropriate and dignified treatment of Native American human remains and any associated grave liens. Although tribal consultation under the California Environmental Quality Act (CEQA; CA Public Resources Code Section 21000 – 21177) is 'advisory' rather than mandated, the NAHC does request 'lead agencies' to work with tribes and interested Native American individuals as 'consulting parties,' on the list provided by the NAHC in order that cultural resources will be protected. However, the 2006 SB 1059 the state enabling legislation to the Federal Energy Policy Act of 2005, does mandate tribal consultation for the 'electric transmission corridors. This is codified in the California Public Resources Code, Chapter 4.3, and §25330 to Division 15, requires consultation with California Native American tribes, and identifies both federally recognized and non-federally recognized on a list maintained by the NAHC

Health and Safety Code §7050.5, Public Resources Code §5097.98 and Sec. §15064.5 (d) of the California Code of Regulations (CEQA Guidelines) mandate procedures to be followed, including that construction or excavation be stopped in the event of an accidental discovery of any human remains in a location other than a dedicated cemetery until the county coroner or medical examiner can determine whether the remains are those of a Native American. . Note that §7052 of the Health & Safety Code states that disturbance of Native American cemeteries is a felony.

Please feel free to contact me at (916) 653-6251 if you have any questions.

Sincerely,

A handwritten signature in black ink, appearing to read "Dave Singleton". The signature is written in a cursive, flowing style with some loops and flourishes. It is positioned to the right of the typed name and title.

Dave Singleton  
Program Analyst

Attachment: List of Culturally Affiliated Native American Contacts

Cc: State Clearinghouse

Native American Contacts  
Riverside County  
October 18, 2010

Twenty-Nine Palms Band of Mission Indians  
Darrell Mike, Chairperson  
46-200 Harrison Place Chemehuevi  
Coachella , CA 92236  
tribal-epa@worldnet.att.net  
(760) 775-5566  
(760) 775-4639 Fax

Colorado River Reservation  
Ginger Scott, Acting Cultural Contact  
26600 Mojave Road Mojave  
Parker , AZ 85344 Chemehuevi  
symi@rraz.net  
(928) 669-9211  
(928) 669-5675 Fax

Joseph R. Benitez (Mike)  
P.O. Box 1829 Chemehuevi  
Indio , CA 92201  
(760) 347-0488  
(760) 408-4089 - cell

Fort Yuma Quechan Indian Nation  
Mike Jackson, Sr., President  
PO Box 1899 Quechan  
Yuma , AZ 85366  
qitpres@quechantribe.com  
(760) 572-0213  
(760) 572-2102 FAX

Chemehuevi Reservation  
Charles Wood, Chairperson  
P.O. Box 1976 Chemehuevi  
Chemehuevi Valley CA 92363  
chair1cit@yahoo.com  
(760) 858-4301  
(760) 858-5400 Fax

AhaMaKav Cultural Society, Fort Mojave Indian  
Linda Otero, Director  
P.O. Box 5990 Mojave  
Mohave Valley AZ 86440  
lindaotero@fortmojave,  
(928) 768-4475  
(928) 768-7996 Fax

Fort Mojave Indian Tribe  
Tim Williams, Chairperson  
500 Merriman Ave Mojave  
Needles , CA 92363  
(760) 629-4591  
(760) 629-5767 Fax

Fort Mojave Indian Tribe  
Nora McDowell, Cultural Resources Coordinator  
500 Merriman Ave Mojave  
Needles , CA 92363  
g.goforth@fortmojave.com  
(760) 629-4591  
(760) 629-5767 Fax

This list is current only as of the date of this document.

Distribution of this list does not relieve any person of statutory responsibility as defined in Section 7050.5 of the Health and Safety Code, Section 5097.94 of the Public Resources Code and Section 5097.98 of the Public Resources Code. Also, federal National Environmental Policy Act (NEPA), National Historic Preservation Act, Section 106 and federal NAGPRA. And 36 CFR Part 800.

This list is only applicable for contacting local Native Americans for consultation purposes with regard to cultural resources impact by the proposed SCH#2005101104; CEQA Notice of Preparation (NOP); draft Environmental Impact Report (DEIR) for the Dever-Palo Verde No. 2 Transmission Line Project - Colorado River Substation Expansion; located , Expanded Colorado River Substation (CRS); located on 90-acres approximately 15

**PUBLIC UTILITIES COMMISSION**505 VAN NESS AVENUE  
SAN FRANCISCO, CA 94102-3298

# **Notice of Preparation**

## **for a Focused Supplemental Environmental Impact Report for the Devers–Palo Verde No. 2 Transmission Line Project - Colorado River Substation Expansion Proposed by Southern California Edison SCH No. 2005101104**

### **A. Introduction**

Southern California Edison (SCE) filed an application for a Certificate of Public Convenience and Necessity (CPCN) with the California Public Utilities Commission (CPUC) for the proposed Devers–Palo Verde 500 kilovolt (kV) No. 2 Transmission Line project (DPV2) in April 2005. The application was determined to be complete and in compliance with CPUC requirements on September 30, 2005. The CPUC and Bureau of Land Management (BLM) prepared a joint Environmental Impact Report/Environmental Impact Statement (EIR/EIS) in 2006, and the CPUC approved the DPV2 Project on January 25, 2007 in Decision D.07-01-040 and certified the EIR as being in compliance with the requirements of CEQA.

On May 14, 2008, SCE filed a Petition for Modification (PFM) of the existing CPCN approved in Decision D.07-01-040. SCE requested that the CPUC authorize SCE to construct DPV2 facilities in only the California portion of DPV2 starting from the Desert Southwest–Midpoint Substation near Blythe, California. This California-only portion of DPV2 is called the Devers-Colorado River (DCR) transmission line. The CPUC approved SCE's PFM on November 20, 2009 in Decision D.09-11-007.

After the CPUC's 2009 Decision, several large solar power projects were proposed in the Blythe area. Two of these projects, the Blythe Solar Power Project and the Genesis Solar Energy Project, have requested interconnection to the electricity grid at the Desert Southwest-Midpoint Substation. As a result, the solar developers and SCE developed a plan to expand the Midpoint Substation to allow the required space for generation tie lines to be interconnected with the SCE 500 kV transmission system.

During the 2009 to 2010, the Blythe Solar Power Project (BSPP) and the Genesis Solar Energy Project (GSEP) have been evaluated under CEQA and NEPA by the BLM and the California Energy Commission. A joint Staff Assessment/Draft EIS was released for each of these projects in March 2010. A Revised Staff Assessment for the BSPP was published in June 2010, and for the GSEP in June and July 2010. BLM published its Final EISs on the BSPP and the GSEP in August 2010. These environmental documents addressed the substation expansion, but they did not adequately cover all issues that the CPUC requires to be addressed in accordance with CEQA. Therefore, the CPUC has concluded that it will prepare a focused Supplemental EIR to address only the specific issues not yet covered for its purposes.

SCE has proposed a number of refinements to the DPV2 project as approved, including the locations of the construction yards and telecommunication system components, and modifying transmission line structures. The review of these project refinements will likely occur as a part of the CPUC's mitigation monitoring process.

As required by CEQA, this Notice of Preparation (NOP) is being sent to interested agencies and members of the public. The purpose of the NOP is to inform recipients that the CPUC is beginning preparation of the DPV2 Supplemental EIR and to solicit information that will be helpful in the environmental review process. **This notice includes a description of the substation expansion that SCE proposes to construct, a summary**

of potential project impacts, and information on how to provide comments to the CPUC. This NOP can be viewed on the project web site at the following link:

<http://www.cpuc.ca.gov/Environment/info/asp/dpv2/dpv2.htm>

## B. Project Description

The expanded Colorado River Substation (CRS) would serve to interconnect solar generation proposed for development in the Blythe area of the Mojave Desert to the DPV2 transmission line. In the DPV2 Final EIR/EIS, the CPUC identified the DPV2 Midpoint Substation and the Desert Southwest-Midpoint Substation as environmentally equivalent. In Decision D. 09-11-007, the CPUC approved both substation locations, and determined that construction at either location did not trigger the need for additional CEQA review. The DPV2 Desert Southwest-Midpoint Substation site (now re-named as the Colorado River Substation) was ultimately selected by SCE as the location for the CRS. The CRS site is a 44-acre site (1,000 feet by 1,900 feet) located in the southeast corner of parcel APN No. 879-080-025.

The expansion of the CRS would require the following new components, each described in more detail below:

- Expanding the proposed and already permitted Colorado River Substation from 44 acres to 90 acres;
- Looping the two 500 kV circuits and terminating the new Devers-Colorado River (DCR) transmission line into the CRS;
- Modifying existing 220 kV structures to allow the DCR to cross the Buck-Julian Hinds 220 kV transmission line;
- Constructing a distribution line to serve the CRS (substation lighting and system power).

**Colorado River Substation Expansion.** The expanded CRS would be located at the same site as the Desert Southwest-Midpoint Substation site evaluated in the EIR/EIS and selected by SCE. However, it would be expanded to approximately 90 acres. It would be located 1.5 miles south of Interstate 10 and 4.75 miles east of Wiley Well Road, in the County of Riverside, California. The proposed CRS site is on public lands managed by the BLM. The proposed CRS Expansion would expand the 500 kV switchyard approved as part of the DPV2 CPCN into a full 500/220 kV substation. The expanded CRS substation would be 1,500 feet by 2,400 feet surrounded by a wall with two gates.

**Transmission Lines.** SCE would loop the existing DPV1 500 kV transmission line and terminate the new Devers-Colorado River (originally called DPV2) transmission line into the CRS by adding a total of approximately 2,000 feet of new transmission lines (two lines of approximately 1,000 feet each located side-by-side within a corridor approximately 1,000 feet wide).

**Modify Existing 220 kV Structures.** The proposed SCE 500 kV loop-in lines would have to cross the recently-installed NextEra Resources Buck-Julian Hinds 220 kV transmission lines, so these structures may require modification to allow the 500 kV crossing. New tubular steel poles at the crossing location may be needed to replace the existing 220 kV concrete poles; design details would be determined during the detailed engineering phase.

**Distribution Line for Substation Power.** SCE would construct approximately 2,500 feet of 12 kV overhead distribution line and approximately 1,000 feet of underground distribution line to connect a nearby existing distribution system to the CRS to provide substation light and power.

## C. Project Location and Affected Jurisdictions

The Proposed Project would be located on approximately 90 acres of land located 1.5 miles south of Interstate 10 and 4.75 miles east of Wiley Well Road, in the County of Riverside, California. In 1989, the BLM granted in perpetuity a 130-foot-wide right-of-way on public land for the DPV2 route. The Proposed Project would be partially within this right-of-way. The proposed CRS site is entirely on property managed by the BLM and within utility corridors as designated in the BLM Resource Management Plans. The project would be located in unincorporated Riverside County.

## D. Potential Environmental Effects

In accordance with CEQA Guidelines, the CPUC intends to prepare a Supplemental EIR to evaluate potential environmental effects of the Colorado River Substation Expansion and the minor transmission line modifications and required distribution line, and to propose mitigation measures to reduce any significant effects identified.

The supplement to the EIR will contain only the information necessary to document all project impacts for the substation expansion (CEQA Guidelines 15163(b)). The CPUC finds that for many disciplines, additional impacts are not likely to occur beyond those analyzed in the DPV2 EIR/EIS and the BLM and CEC documents. For the environmental disciplines listed below, the substation expansion would not require additional analysis:

- Visual Resources
- Wilderness and Recreation
- Noise
- Public Health and Safety
- Geology, Minerals, and Soils
- Land Use
- Agriculture
- Transportation and Traffic
- Socioeconomics

The environmental review in the Supplemental EIR will focus on the disciplines listed below, addressing impacts that could occur due to the Colorado River Substation Expansion that were not covered in the original DPV2 EIR/EIS or the subsequent documents, including the BLM GSEP and BSPP EISs and the CEC GSEP and BSPP Staff Assessments. In addition, the Supplemental EIR may address some minor refinements to the DPV2 project as approved, including facility changes and water use.

- **Biological Resources:** Recent surveys provide information on special-status species at the substation site.
- **Cultural Resources:** Recent surveys of the expanded substation area have been provided and will be addressed in the Supplemental EIR.
- **Air Quality / Greenhouse Gas:** An updated analysis will be presented consistent with current CEQA requirements.
- **Water Resources:** Project water use will be addressed if it will differ substantially from SCE's initial project description.

Attachment 1 to this NOP presents a preliminary list of potential impacts of the Proposed Project. Based on the analysis completed in the Final EIR/EIS, there are several environmental disciplines for which it is not expected that the Colorado River Substation expansion and ancillary facilities would result in substantially more severe impacts.

**Mitigation Measures.** The Final EIR/EIS for the DPV2 project presented numerous proposed measures that were designed to reduce or eliminate potential impacts of the Colorado River Substation as analyzed in the

document. These measures were adopted by the CPUC in its approval of the project. The effectiveness of these measures to reduce impacts to specific resources affected by the expanded substation will be evaluated in the Supplemental EIR, and additional mitigation measures may be developed to further reduce impacts, if required. When the CPUC makes its final decision on the Proposed Project, it will define the mitigation measures to be adopted as a condition of project approval, and the CPUC will require implementation of a mitigation monitoring program.

## E. Scoping Comments

At this time, the CPUC is soliciting information regarding the topics that should be included in the Supplemental EIR. **All comments for the CPUC's CEQA scoping period must be received by November 1, 2010.** You may submit comments by U.S. mail, by electronic mail, or by fax.

**By Mail:** If you send comments by U.S. mail, please use first-class mail and be sure to include your name and a return address. Please send written comments on the scope and content of the Supplemental EIR to:

**Billie Blanchard**  
**California Public Utilities Commission**  
c/o Aspen Environmental Group  
235 Montgomery Street, Suite 935  
San Francisco, CA 94104-3002  
Fax and Voicemail: (800) 886-1888

**By Electronic Mail:** E-mail communications are welcome; however, please remember to include your name and return address in the e-mail message. E-mail messages should be sent to [dpv2@aspenerg.com](mailto:dpv2@aspenerg.com).

**By Fax:** You may fax your comment letter to our information line at (800) 886-1888. Please remember to include your name and return address in the fax, to write legibly, and use black or blue ink. The Supplemental EIR will review and consider all comments received.

## F. Project Information

Information about this application and the environmental review process will be posted on the Internet at: <http://www.cpuc.ca.gov/environment/info/aspen/dpv2/dpv2.htm>. This site will be used to post all public documents during the supplemental environmental review process. In addition, a copy of the Final EIR/EIS for the DPV2 project may be found at this site.

## G. Issuance of NOP

**The California Public Utilities Commission hereby issues this Notice of Preparation of an Environmental Impact Report.**

Billie Blanchard for  
Ken Lewis Deputy Director  
Energy Division  
California Public Utilities Commission

Date: 09/29/10



---

**Attachment 1. Summary of Potential Issues or Impacts: Colorado River Substation Expansion**


---

**Environmental Issue****Area****Potential Issues or Impacts**

Air Quality/Greenhouse Gas

- Project would create greenhouse gas emissions.

**Biological Resources*****Vegetation***

- Direct and temporary impacts from construction would affect stabilized and partially stabilized sand dune communities and special-status plant species therein.

***Wildlife***

- Potential direct, permanent impacts to wildlife, which may be accidentally run over by vehicles during construction, operations, and maintenance procedures.
- Potential direct and indirect impacts to special-status reptile species including: Mojave fringe-toed lizard.

***Mammals***

- Potential direct, permanent impacts to fossorial species, which may be inadvertently killed when burrows are collapsed by heavy machinery.
- Potential direct and indirect impacts to special-status mammalian including desert kit fox.

**Cultural Resources*****Cultural Sites***

- Potential impacts to archaeological sites.
- Potential impacts to Traditional Culture Properties (TCPs) or potential TCPs from the construction, operations, and maintenance of the proposed substation expansion.
- Potential impacts to historical sites.

***Paleontological Sites***

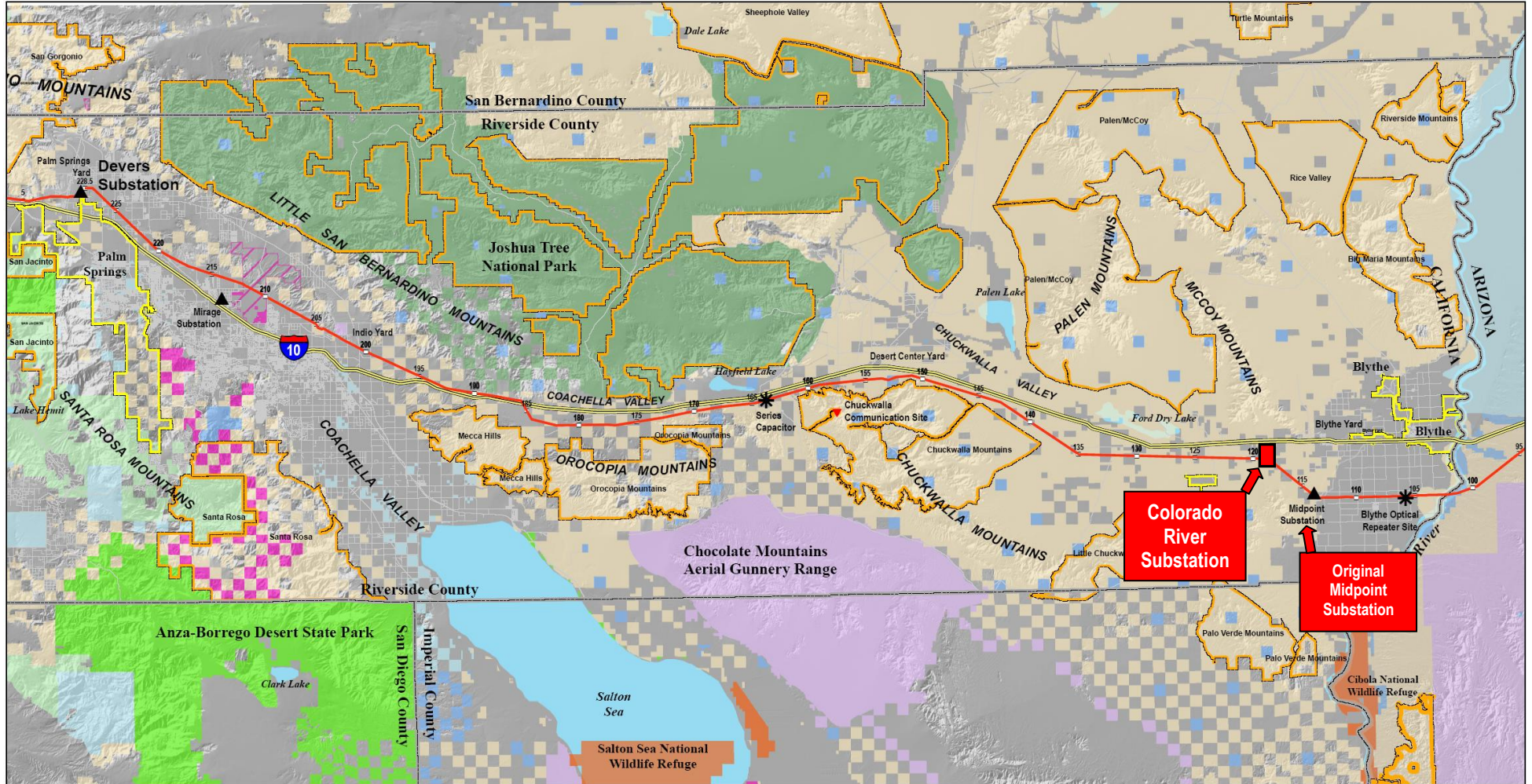
- Potential impacts to paleontological resources during excavation and grading of the expanded substation site.

**Hydrology and Water Quality**

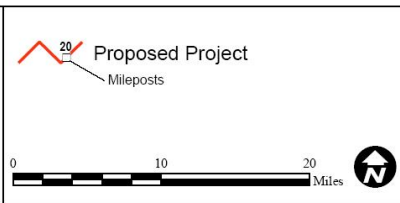
- Potential for expanded use of groundwater to affect the groundwater basin or water supply for other users.

**Other Issues**

- Cumulative Impacts (including other proposed transmission lines in or near the expanded substation site)
  - Growth-Inducing Effects
-



PREPARED BY  
**Aspen**  
 Environmental Group

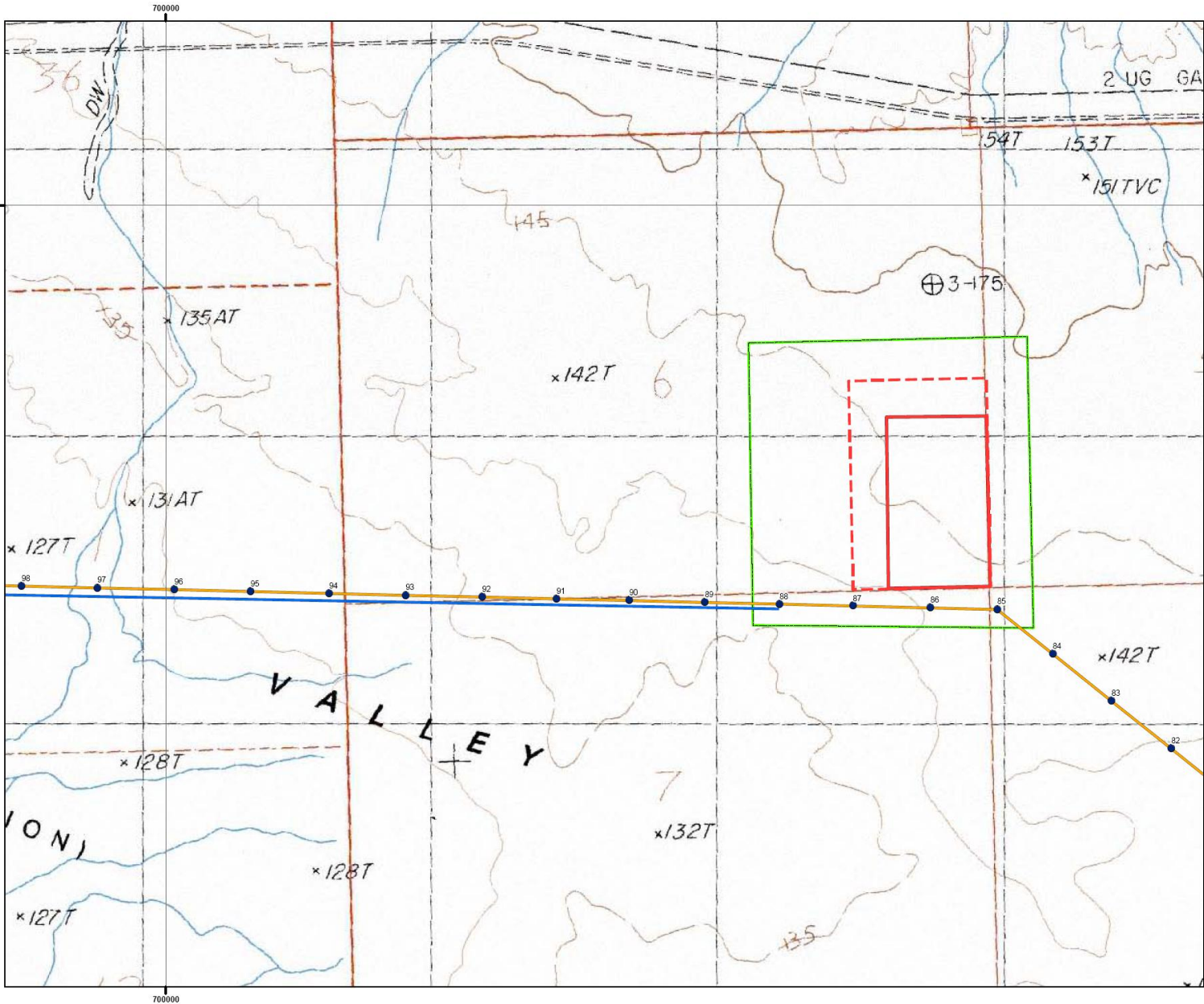


**OWNERSHIP/JURISDICTIONS (unincorporated areas)**

BLM	Nature Conservancy	Substations
Fish and Wildlife Service	Forest Service	Series Capacitor
Indian Lands	State Fish and Game	Construction Yard
Military	State	Communications Site
State Parks & Recreation	Private	Incorporated Areas
National Park Service	Wilderness Areas	

**Devers-Palo Verde No. 2  
 Transmission Line Project**

Figure B-2  
**Devers-Harquahala Portion:  
 Colorado River to Devers Substation**



GENESIS SOLAR, LLC  
 GENESIS SOLAR ENERGY PROJECT  
 RIVERSIDE COUNTY,  
 CALIFORNIA



**Legend**

- Existing Blythe T-line
- Remainder Of Genesis Generation Tie Line
- Spring 2010 Biological Resources Survey Area
- SCE CO River Substation (CRS)**
- 500kv Footprint Permitted By CPUC In 2009
- Proposed 230kv Expansion Area

Notes:  
 (a) UTM Zone 11, NAD 1983 Projection.  
 (b) Source data: ESRI, TTEC, AECOM

**Colorado River Substation  
 Expansion Area**

TETRA TECH EC, INC.

**California Public Utilities Commission**

**RECORD OF CONVERSATION** Page 1 of 1

**Colorado River Substation Expansion Project SCH No. 2005101104**

<input checked="" type="checkbox"/> <b>Telephone:</b> (760) 775-5566	<input type="checkbox"/> <b>Meeting Location:</b>	
<b>NAME:</b> Darrell Mike	<b>DATE:</b> January 13, 2011	<b>TIME:</b> 12:30 pm
<b>TITLE:</b> Chairperson		
<b>AGENCY:</b> Twenty-Nine Palms Band of Mission Indians		
<b>SUBJECT:</b> Cultural Resources Concerns for the Colorado River Substation Expansion Project		

**COMMENTS:**

On behalf of the California Public Utilities Commission, Joan George of Applied EarthWorks, Inc. contacted Darrell Mike, Chairperson of the Twenty-Nine Palms Band of Mission Indians, by telephone to inquire about any cultural resources concerns regarding the proposed Project. Because Mr. Mike was out of the office for lunch, a message was left with the receptionist to have Mr. Mike return Ms. George's phone call.

<b>cc:</b>	<b>Aspen Team Member Name:</b> Joan George
	<b>Company:</b> Applied EarthWorks, Inc.

**California Public Utilities Commission**

**RECORD OF CONVERSATION** Page 1 of 1

**Colorado River Substation Expansion Project SCH No. 2005101104**

<input checked="" type="checkbox"/> <b>Telephone:</b> (760) 347-0488	<input type="checkbox"/> <b>Meeting Location:</b>	
<b>NAME:</b> Joseph R. Benitez	<b>DATE:</b> January 13, 2011	<b>TIME:</b> 12:35 pm
<b>TITLE:</b> N/A		
<b>AGENCY:</b> Chemehuevi		
<b>SUBJECT:</b> Cultural Resources Concerns for the Colorado River Substation Expansion Project		

**COMMENTS:**

On behalf of the California Public Utilities Commission, Joan George of Applied EarthWorks, Inc. contacted Joseph R. Benitez, Chemehuevi, by telephone to inquire about any cultural resources concerns regarding the proposed Project. Because Mr. Benitez was not available, a message was left with a family member(?) to have Mr. Benitez return Ms. George's phone call.

<b>cc:</b>	<b>Aspen Team Member Name:</b> Joan George
	<b>Company:</b> Applied EarthWorks, Inc.

# California Public Utilities Commission

RECORD OF CONVERSATION Page 1 of 1

Colorado River Substation Expansion Project SCH No. 2005101104

<input checked="" type="checkbox"/> <b>Telephone:</b> (760) 858-4301	<input type="checkbox"/> <b>Meeting Location:</b>	
<b>NAME:</b> Charles Wood	<b>DATE:</b> January 13, 2011	<b>TIME:</b> 12:40 pm
<b>TITLE:</b> Chairperson		
<b>AGENCY:</b> Chemehuevi Reservation		
<b>SUBJECT:</b> Cultural Resources Concerns for the Colorado River Substation Expansion Project		

## COMMENTS:

On behalf of the California Public Utilities Commission, Joan George of Applied EarthWorks, Inc. contacted Charles Wood, Chairperson for the Chemehuevi Reservation, by telephone to inquire about any cultural resources concerns regarding the proposed Project. Because Mr. Wood was not available, a message was left with the receptionist to have Mr. Wood return Ms. George's phone call.

<b>cc:</b>	<b>Aspen Team Member Name:</b> Joan George
	<b>Company:</b> Applied EarthWorks, Inc.

**California Public Utilities Commission**

**RECORD OF CONVERSATION** Page 1 of 1

**Colorado River Substation Expansion Project SCH No. 2005101104**

<input checked="" type="checkbox"/> <b>Telephone:</b> (760) 629-4591	<input type="checkbox"/> <b>Meeting Location:</b>	
<b>NAME:</b> Tim Williams	<b>DATE:</b> January 13, 2011	<b>TIME:</b> 12:43 pm
<b>TITLE:</b> Chairperson		
<b>AGENCY:</b> Fort Mojave Indian Tribe		
<b>SUBJECT:</b> Cultural Resources Concerns for the Colorado River Substation Expansion Project		

**COMMENTS:**

On behalf of the California Public Utilities Commission, Joan George of Applied EarthWorks, Inc. contacted Tim Williams, Chairperson for the Fort Mojave Indian Tribe, by telephone to inquire about any cultural resources concerns regarding the proposed Project. Because Mr. Williams was not available, a message was left with the receptionist to have Mr. Williams return Ms. George's phone call.

<b>cc:</b>	<b>Aspen Team Member Name:</b> Joan George
	<b>Company:</b> Applied EarthWorks, Inc.

**California Public Utilities Commission**

**RECORD OF CONVERSATION** Page 1 of 1

**Colorado River Substation Expansion Project SCH No. 2005101104**

<input checked="" type="checkbox"/> <b>Telephone:</b> (928) 669-9211	<input type="checkbox"/> <b>Meeting Location:</b>	
<b>NAME:</b> Ginger Scott	<b>DATE:</b> January 13, 2011	<b>TIME:</b> 12:45 pm
<b>TITLE:</b> Acting Cultural Contact		
<b>AGENCY:</b> Colorado River Reservation		
<b>SUBJECT:</b> Cultural Resources Concerns for the Colorado River Substation Expansion Project		

**COMMENTS:**

On behalf of the California Public Utilities Commission, Joan George of Applied EarthWorks, Inc. contacted Ginger Scott, Acting Cultural Contact for the Colorado River Reservation, by telephone to inquire about any cultural resources concerns regarding the proposed Project. Ms. George spoke to Ms. Scott who informed her that Lisa Swick is now the Cultural Contact. Ms. George was transferred to Ms. Swick who asked for some clarification regarding the Project. After Ms. Swick recalled the Project area, she stated that she was aware of sites in the area. She requested that Ms. George email her the original scoping letter to review and that she would get back to Ms. George with a formal response letter the following week.

1:04pm - Ms. George emailed Ms. Swick the original scoping letter.

<b>cc:</b>	<b>Aspen Team Member Name:</b> Joan George
	<b>Company:</b> Applied EarthWorks, Inc.



# California Public Utilities Commission

RECORD OF CONVERSATION Page 1 of 1

Colorado River Substation Expansion Project SCH No. 2005101104

<input checked="" type="checkbox"/> <b>Telephone:</b> (760) 572-0213	<input type="checkbox"/> <b>Meeting Location:</b>	
<b>NAME:</b> Mike Jackson, Sr.	<b>DATE:</b> January 13, 2011	<b>TIME:</b> 1:05 pm
<b>TITLE:</b> President		
<b>AGENCY:</b> Fort Yuma Quechan Indian Nation		
<b>SUBJECT:</b> Cultural Resources Concerns for the Colorado River Substation Expansion Project		

## COMMENTS:

On behalf of the California Public Utilities Commission, Joan George of Applied EarthWorks, Inc. contacted Mike Jackson, Sr., President of the Fort Yuma Quechan Indian Nation, by telephone to inquire about any cultural resources concerns regarding the proposed Project. Because Mr. Jackson was not available, a message was left with the receptionist to have Mr. Jackson return Ms. George's phone call.

<b>cc:</b>	<b>Aspen Team Member Name:</b> Joan George
	<b>Company:</b> Applied EarthWorks, Inc.

# California Public Utilities Commission

RECORD OF CONVERSATION Page 1 of 1

Colorado River Substation Expansion Project SCH No. 2005101104

<input checked="" type="checkbox"/> <b>Telephone:</b> (928) 768-4475	<input type="checkbox"/> <b>Meeting Location:</b>	
<b>NAME:</b> Linda Otero	<b>DATE:</b> January 13, 2011	<b>TIME:</b> 1:08 pm
<b>TITLE:</b> Director		
<b>AGENCY:</b> AhaMaKav Cultural Society, Fort Mojave Indian		
<b>SUBJECT:</b> Cultural Resources Concerns for the Colorado River Substation Expansion Project		

## COMMENTS:

On behalf of the California Public Utilities Commission, Joan George of Applied EarthWorks, Inc. contacted Linda Otero, Director of the AhaMaKav Cultural Society, Fort Mojave Indian, by telephone to inquire about any cultural resources concerns regarding the proposed Project. A voicemail message was left to have Ms. Otero return Ms. George's phone call.

<b>cc:</b>	<b>Aspen Team Member Name:</b> Joan George
	<b>Company:</b> Applied EarthWorks, Inc.

**California Public Utilities Commission**

**RECORD OF CONVERSATION** Page 1 of 1

**Colorado River Substation Expansion Project SCH No. 2005101104**

<input checked="" type="checkbox"/> <b>Telephone:</b> (760) 629-4591	<input type="checkbox"/> <b>Meeting Location:</b>	
<b>NAME:</b> Nora McDowell	<b>DATE:</b> January 13, 2011	<b>TIME:</b> 1:11 pm
<b>TITLE:</b> Cultural Resources Coordinator		
<b>AGENCY:</b> Fort Mojave Indian Tribe		
<b>SUBJECT:</b> Cultural Resources Concerns for the Colorado River Substation Expansion Project		

**COMMENTS:**

On behalf of the California Public Utilities Commission, Joan George of Applied EarthWorks, Inc. contacted Nora McDowell, Cultural Resources Coordinator for the Fort Mojave Indian Tribe, by telephone to inquire about any cultural resources concerns regarding the proposed Project. A voicemail message was left to have Ms. McDowell return Ms. George's phone call.

<b>cc:</b>	<b>Aspen Team Member Name:</b> Joan George
	<b>Company:</b> Applied EarthWorks, Inc.

# California Public Utilities Commission

RECORD OF CONVERSATION Page 1 of 1

Colorado River Substation Expansion Project SCH No. 2005101104

<input checked="" type="checkbox"/> <b>Telephone:</b> (928) 768-4475	<input type="checkbox"/> <b>Meeting Location:</b>	
<b>NAME:</b> Linda Otero	<b>DATE:</b> January 20, 2011	<b>TIME:</b> 12:25 pm
<b>TITLE:</b> Director		
<b>AGENCY:</b> AhaMaKav Cultural Society, Fort Mojave Indian		
<b>SUBJECT:</b> Cultural Resources Concerns for the Colorado River Substation Expansion Project		

## COMMENTS:

On behalf of the California Public Utilities Commission, Joan George of Applied EarthWorks, Inc. contacted Linda Otero, Director of the AhaMaKav Cultural Society, Fort Mojave Indian, by telephone to inquire about any cultural resources concerns regarding the proposed Project. A voicemail message was left to have Ms. Otero return Ms. George's phone call, should she have any concerns regarding the Project.

<b>cc:</b>	<b>Aspen Team Member Name:</b> Joan George
	<b>Company:</b> Applied EarthWorks, Inc.

**California Public Utilities Commission**

**RECORD OF CONVERSATION** Page 1 of 1

**Colorado River Substation Expansion Project SCH No. 2005101104**

<input checked="" type="checkbox"/> <b>Telephone:</b> (760) 629-4591	<input type="checkbox"/> <b>Meeting Location:</b>	
<b>NAME:</b> Nora McDowell	<b>DATE:</b> January 20, 2011	<b>TIME:</b> 12:30 pm
<b>TITLE:</b> Cultural Resources Coordinator		
<b>AGENCY:</b> Fort Mojave Indian Tribe		
<b>SUBJECT:</b> Cultural Resources Concerns for the Colorado River Substation Expansion Project		

**COMMENTS:**

On behalf of the California Public Utilities Commission, Joan George of Applied EarthWorks, Inc. contacted Nora McDowell, Cultural Resources Coordinator for the Fort Mojave Indian Tribe, by telephone to inquire about any cultural resources concerns regarding the proposed Project. A voicemail message was left to have Ms. McDowell return Ms. George's phone call, should she have any concerns regarding the Project.

<b>cc:</b>	<b>Aspen Team Member Name:</b> Joan George
	<b>Company:</b> Applied EarthWorks, Inc.

# California Public Utilities Commission

RECORD OF CONVERSATION Page 1 of 1

Colorado River Substation Expansion Project SCH No. 2005101104

<input checked="" type="checkbox"/> <b>Telephone:</b> (760) 572-0213	<input type="checkbox"/> <b>Meeting Location:</b>	
<b>NAME:</b> Mike Jackson, Sr.	<b>DATE:</b> January 20, 2011	<b>TIME:</b> 12:34 pm
<b>TITLE:</b> President		
<b>AGENCY:</b> Fort Yuma Quechan Indian Nation		
<b>SUBJECT:</b> Cultural Resources Concerns for the Colorado River Substation Expansion Project		

## COMMENTS:

On behalf of the California Public Utilities Commission, Joan George of Applied EarthWorks, Inc. contacted Mike Jackson, Sr., President of the Fort Yuma Quechan Indian Nation, by telephone to inquire about any cultural resources concerns regarding the proposed Project. Because Mr. Jackson was not available, a message was left with the receptionist to have Mr. Jackson return Ms. George's phone call.

<b>cc:</b>	<b>Aspen Team Member Name:</b> Joan George
	<b>Company:</b> Applied EarthWorks, Inc.

**California Public Utilities Commission**

**RECORD OF CONVERSATION** Page 1 of 1

**Colorado River Substation Expansion Project SCH No. 2005101104**

<input checked="" type="checkbox"/> <b>Telephone:</b> (760) 629-4591	<input type="checkbox"/> <b>Meeting Location:</b>	
<b>NAME:</b> Tim Williams	<b>DATE:</b> January 20, 2011	<b>TIME:</b> 12:36 pm
<b>TITLE:</b> Chairperson		
<b>AGENCY:</b> Fort Mojave Indian Tribe		
<b>SUBJECT:</b> Cultural Resources Concerns for the Colorado River Substation Expansion Project		

**COMMENTS:**

On behalf of the California Public Utilities Commission, Joan George of Applied EarthWorks, Inc. contacted Tim Williams, Chairperson for the Fort Mojave Indian Tribe, by telephone to inquire about any cultural resources concerns regarding the proposed Project. Because Mr. Williams was not available, a voicemail message was left to have Mr. Williams return Ms. George's phone call, should he have any concerns regarding the Project.

<b>cc:</b>	<b>Aspen Team Member Name:</b> Joan George
	<b>Company:</b> Applied EarthWorks, Inc.

# California Public Utilities Commission

RECORD OF CONVERSATION Page 1 of 1

Colorado River Substation Expansion Project SCH No. 2005101104

<input checked="" type="checkbox"/> <b>Telephone:</b> (760) 858-4301	<input type="checkbox"/> <b>Meeting Location:</b>	
<b>NAME:</b> Charles Wood	<b>DATE:</b> January 20, 2011	<b>TIME:</b> 12:38 pm
<b>TITLE:</b> Chairperson		
<b>AGENCY:</b> Chemehuevi Reservation		
<b>SUBJECT:</b> Cultural Resources Concerns for the Colorado River Substation Expansion Project		

## COMMENTS:

On behalf of the California Public Utilities Commission, Joan George of Applied EarthWorks, Inc. contacted Charles Wood, Chairperson for the Chemehuevi Reservation, by telephone to inquire about any cultural resources concerns regarding the proposed Project. Mr. Wood stated he had no concerns regarding the Project.

<b>cc:</b>	<b>Aspen Team Member Name:</b> Joan George
	<b>Company:</b> Applied EarthWorks, Inc.



**California Public Utilities Commission**

**RECORD OF CONVERSATION** Page 1 of 1

**Colorado River Substation Expansion Project SCH No. 2005101104**

<input checked="" type="checkbox"/> <b>Telephone:</b> (760) 347-0488	<input type="checkbox"/> <b>Meeting Location:</b>	
<b>NAME:</b> Joseph R. Benitez	<b>DATE:</b> January 20, 2011	<b>TIME:</b> 12:43 pm
<b>TITLE:</b> N/A		
<b>AGENCY:</b> Chemehuevi		
<b>SUBJECT:</b> Cultural Resources Concerns for the Colorado River Substation Expansion Project		

**COMMENTS:**

On behalf of the California Public Utilities Commission, Joan George of Applied EarthWorks, Inc. contacted Joseph R. Benitez, Chemehuevi, by telephone to inquire about any cultural resources concerns regarding the proposed Project. Ms. George spoke to Mr. Benitez who stated that he had misplaced the scoping letter regarding the Project. He requested that Ms. George email him the original scoping letter to review and would get back to Ms. George with a response.

12:51pm - Ms. George emailed Mr. Benitez the original scoping letter.

<b>cc:</b>	<b>Aspen Team Member Name:</b> Joan George
	<b>Company:</b> Applied EarthWorks, Inc.

# California Public Utilities Commission

RECORD OF CONVERSATION Page 1 of 1

Colorado River Substation Expansion Project SCH No. 2005101104

<input checked="" type="checkbox"/> <b>Telephone:</b> (760) 775-5566	<input type="checkbox"/> <b>Meeting Location:</b>	
<b>NAME:</b> Darrell Mike	<b>DATE:</b> January 20, 2011	<b>TIME:</b> 12:52 pm
<b>TITLE:</b> Chairperson		
<b>AGENCY:</b> Twenty-Nine Palms Band of Mission Indians		
<b>SUBJECT:</b> Cultural Resources Concerns for the Colorado River Substation Expansion Project		

## COMMENTS:

On behalf of the California Public Utilities Commission, Joan George of Applied EarthWorks, Inc. contacted Darrell Mike, Chairperson of the Twenty-Nine Palms Band of Mission Indians, by telephone to inquire about any cultural resources concerns regarding the proposed Project. Because Mr. Mike was not available, a voicemail message was left to have Mr. Mike return Ms. George's phone call should he have any concerns regarding the Project.

<b>cc:</b>	<b>Aspen Team Member Name:</b> Joan George
	<b>Company:</b> Applied EarthWorks, Inc.

# California Public Utilities Commission

RECORD OF CONVERSATION Page 1 of 1

Colorado River Substation Expansion Project SCH No. 2005101104

<input checked="" type="checkbox"/> <b>Telephone:</b> (928) 669-9211	<input type="checkbox"/> <b>Meeting Location:</b>	
<b>NAME:</b> Lisa Swick	<b>DATE:</b> January 20, 2011	<b>TIME:</b> 12:57 pm
<b>TITLE:</b> Cultural Contact		
<b>AGENCY:</b> Colorado River Reservation		
<b>SUBJECT:</b> Cultural Resources Concerns for the Colorado River Substation Expansion Project		

## COMMENTS:

On behalf of the California Public Utilities Commission, Joan George of Applied EarthWorks, Inc. contacted Lisa Swick, Cultural Contact for the Colorado River Reservation, by telephone to inquire about any cultural resources concerns regarding the proposed Project. Ms. George was unable to leave a voicemail message and received the following recording: "The user mailbox can't accept messages."

1:05pm - Ms. George emailed Ms. Swick a message to contact her if she had any concerns regarding the Project.

<b>cc:</b>	<b>Aspen Team Member Name:</b> Joan George
	<b>Company:</b> Applied EarthWorks, Inc.

**LIST OF NATIVE AMERICAN CONTACTS AND RECORD OF RESPONSES**

<b>Name</b>	<b>Date &amp; Time of Calls</b>	<b>Responses</b>
<p>Darrell Mike Chairperson Twenty-Nine Palms Band of Mission Indians</p>	<p>Left message 01/13/2011, 12:30pm</p> <p>Left message 01/20/2011, 12:52pm</p> <p>01/24/2011</p>	<p>Mr. Mike was out of the office for lunch. Left message with the tribal receptionist to have Mr. Mike return my phone call.</p> <p>Left voicemail message to have Mr. Mike return my phone call if he had any concerns regarding the Project.</p> <p>As of this date, no response received.</p>
<p>Joseph R. Benitez Chemehuevi</p>	<p>Left message 01/13/2011, 12:35pm</p> <p>Call made 01/20/2011, 12:43pm</p> <p>01/20/2011, 12:51pm</p> <p>01/24/2011</p>	<p>Left message with family member(?) to have Mr. Benitez return my phone call.</p> <p>Spoke to Mr. Benitez who stated that he had misplaced the scoping letter regarding the Project. He requested I email him the original scoping letter to review and would get back to me with a response.</p> <p>Emailed original scoping letter to Mr. Benitez.</p> <p>As of this date, no response received.</p>
<p>Charles Wood Chairperson Chemehuevi Reservation</p>	<p>Left message 01/13/2011, 12:40pm</p> <p>Call made 01/20/2011, 12:38pm</p>	<p>Left message with the tribal receptionist to have Mr. Wood return my phone call.</p> <p>Spoke to Mr. Wood who stated he had no concerns regarding the Project area.</p>

<b>Name</b>	<b>Date &amp; Time of Calls</b>	<b>Responses</b>
<p>Tim Williams Chairperson Fort Mojave Indian Tribe</p>	<p>Left message 01/13/2011, 12:43pm</p> <p>Left message 01/20/2011, 12:36pm</p> <p>01/24/2011</p>	<p>Left message with the tribal receptionist to have Mr. Williams return my phone call.</p> <p>Left voicemail message to have Mr. Williams return my phone call if he had any concerns regarding the Project.</p> <p>As of this date, no response received.</p>
<p>Ginger Scott Acting Cultural Contact Colorado River Reservation</p>	<p>Call made 01/13/2011, 12:45pm</p> <p>01/13/2011, 1:04pm</p> <p>Call made 01/20/2011, 12:57pm</p> <p>01/20/2011, 1:05pm</p> <p>01/24/2011</p>	<p>Spoke to Ms. Scott who informed me that Lisa Swick is now the cultural contact. I was transferred to Ms. Swick who asked for some clarification regarding the Project. After she recalled the area, she stated that she was aware of a couple of sites in the area. She requested I email her the original scoping letter to review and she would get back to me with a formal response letter next week.</p> <p>Emailed original scoping letter to Ms. Swick.</p> <p>Called Ms. Swick, but was unable to leave voicemail message and received the following recording: "The user mailbox can't accept messages."</p> <p>Emailed Ms. Swick a message to contact me if she had any concerns regarding the Project.</p> <p>As of this date, no response received.</p>

<b>Name</b>	<b>Date &amp; Time of Calls</b>	<b>Responses</b>
Mike Jackson, Sr. President Fort Yuma Quechan Indian Nation	Left message 01/13/2011, 1:05pm  Left message 01/20/2011, 12:34pm  01/24/2011	Left message with the tribal receptionist to have Mr. Jackson return my phone call.  Left message with the tribal receptionist to have Mr. Jackson return my phone call.  As of this date, no response received.
Linda Otero Director AhaMaKav Cultural Society, Fort Mojave Indian	Left message 01/13/2011, 1:08pm  Received message 01/14/2011, 11:13am  Left message 01/20/2011, 12:25pm  01/24/2011	Left voicemail message to have Ms. Otero return my phone call.  Ms. Otero left a voicemail message to return her phone call.  Left voicemail message to have Ms. Otero return my phone call if she had any concerns regarding the Project.  As of this date, no response received.
Nora McDowell Cultural Resources Coordinator Fort Mojave Indian Tribe	Left message 01/13/2011, 1:11pm  Left message 01/20/2011, 12:30pm  01/24/2011	Left voicemail message to have Ms. McDowell return my phone call.  Left voicemail message to have Ms. McDowell return my phone call if she had any concerns regarding the Project.  As of this date, no response received.