








El Casco System Project
D.11 TRANSPORTATION AND TRAFFIC

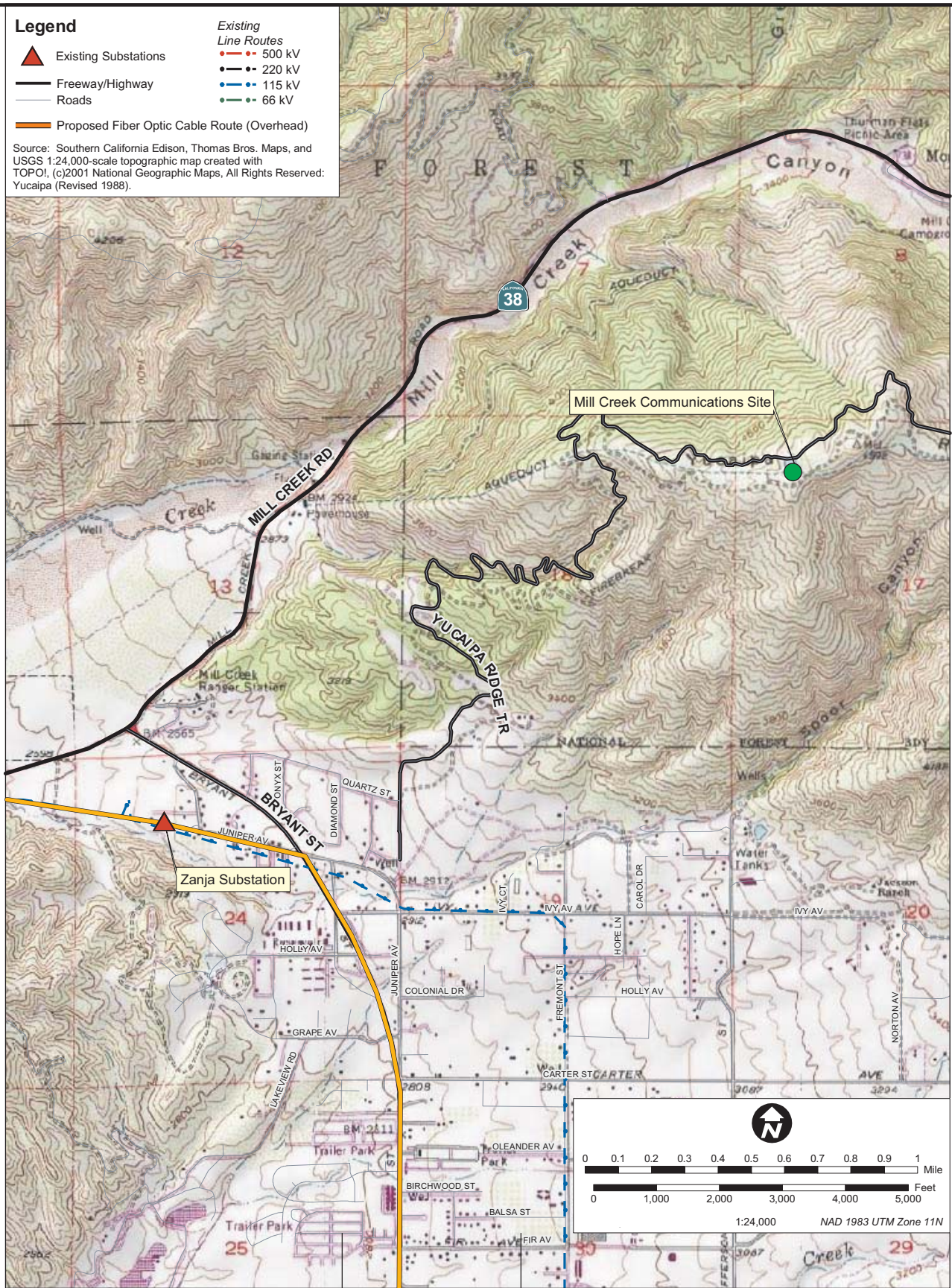
Legend

-  Existing Substations
-  Freeway/Highway
-  Roads

- Existing Line Routes*
-  500 kV
 -  220 kV
 -  115 kV
 -  66 kV

 Proposed Fiber Optic Cable Route (Overhead)

Source: Southern California Edison, Thomas Bros. Maps, and USGS 1:24,000-scale topographic map created with TOPO!, (c)2001 National Geographic Maps, All Rights Reserved: Yucaipa (Revised 1988).



Source: SCE, 2007a.

Figure D.11-2
Major Roadways in the Zanja Substation and
Mill Creek Communication Site Area