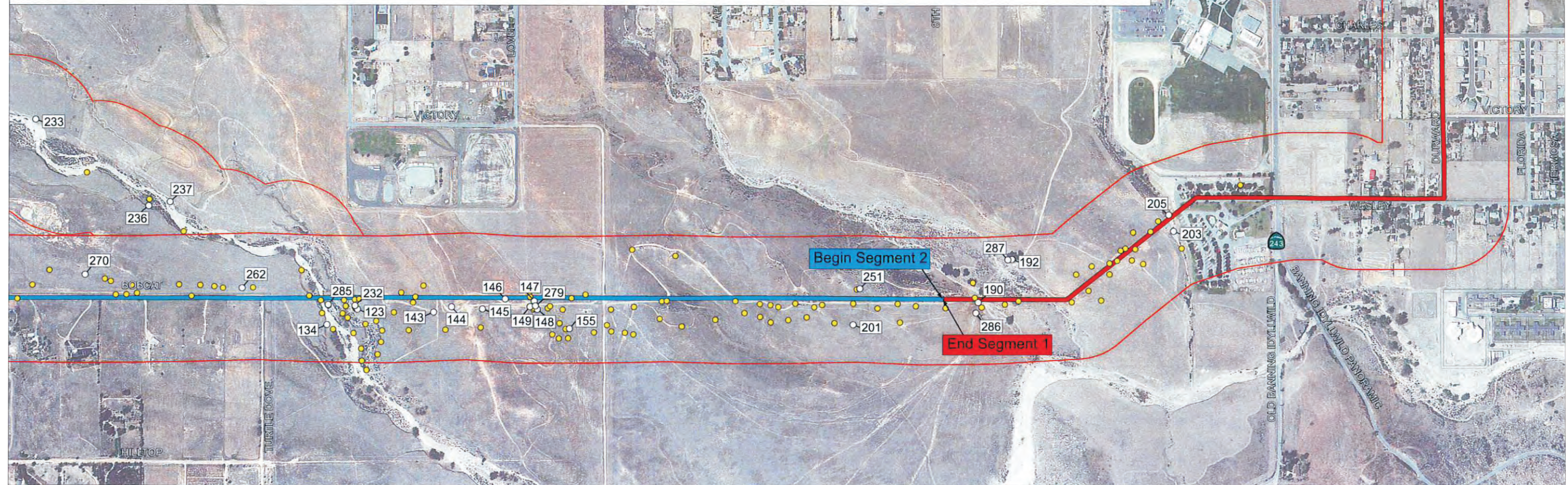
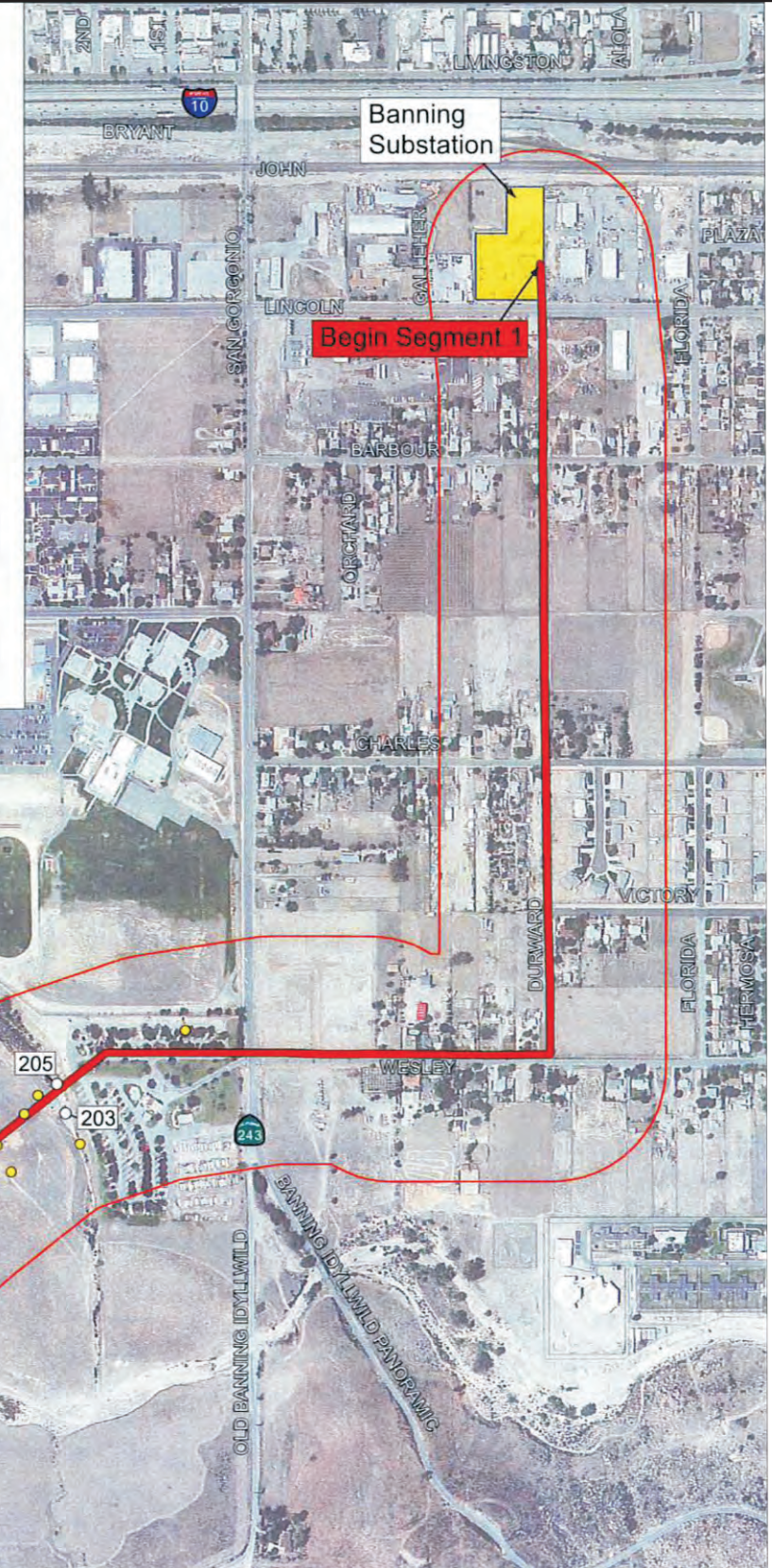


Biological Resource Survey Legend

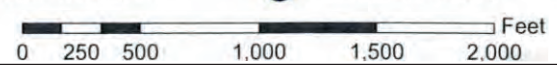
| Unique Identifier | Resource Type | Latitude | Longitude | Notes | Unique Identifier | Resource Type | Latitude | Longitude | Notes | Unique Identifier | Resource Type | Latitude | Longitude | Notes |
|-------------------|---------------|-----------|-------------|---------------------------------------|-------------------|---------------|-----------|-------------|--|-------------------|---------------|--------------------------------|-------------|---------------------------------------|
| 123 | Nest | 33.913022 | -116.877621 | Large to medium nest; no activity | 155 | Habitat | 33.910563 | -116.88763 | Habitat for Yucaipa Onion and dudleya | 237 | Habitat | 33.910581 | -16.901568 | Habitat for Yucaipa Onion and dudleya |
| 134 | Habitat | 33.911388 | -116.880847 | Habitat for Yucaipa Onion and dudleya | 190 | Burrow | 33.90992 | -116.89522 | Burrowing owl burrow; inactive | 251 | Nest | 33.91272 | -116.90608 | Raven nest; no direct activity |
| 143 | Habitat | 33.91058 | -116.883419 | L.A. Pocket Mouse Habitat; occupied | 192 | Burrow | 33.91002 | -116.89538 | Potential burrowing owl burrow; inactive | 262 | Habitat | 33.91445 | -116.90906 | Habitat for Yucaipa Onion and dudleya |
| 144 | Nest | 33.91143 | -116.88361 | Bullock's oriole nest | 201 | Burrow | 33.91040 | -116.89614 | Large burrow; species unknown | 270 | Habitat | 33.910884 | -116.913621 | Habitat for Yucaipa Onion and dudleya |
| 145 | Burrow | 33.91039 | -116.88438 | Potential L.A. Pocket Mouse burrow | 203 | Burrow | 33.91038 | -116.89620 | Bullock's oriole nest | 279 | Habitat | 33.910835 | -116.925172 | L.A. Pocket Mouse Habitat; occupied |
| 146 | Burrow | 33.91050 | -116.88447 | Potential L.A. Pocket Mouse burrow | 205 | Habitat | 33.910579 | -116.896915 | Habitat for Yucaipa Onion and dudleya | 285 | Animal | 33.91054 | -116.901622 | Coastal Whiptail Lizard sighting |
| 147 | Burrow | 33.91059 | -116.88456 | Potential L.A. Pocket Mouse burrow | 232 | Nest | 33.91025 | -116.90105 | Raven stick nest; no birds observed | 286 | Animal | 33.91033 | -116.884576 | Coastal Whiptail Lizard sighting |
| 148 | Nest Cavity | 33.91092 | -116.88459 | Nesting cavity; occupancy unknown | 233 | Habitat | 33.910579 | -116.901196 | Potential L.A. Pocket Mouse habitat | 287 | Nest | 33.91142 | -116.88366 | Red-tailed Hawk; Active |
| 149 | Area | 33.91092 | -116.884609 | Riparian-riverine area in wash | 236 | Area | 33.910672 | -116.901559 | Riparian-riverine area in wash | ● | Burrow | refer to table for coordinates | | Ground squirrel burrow |



LEGEND



- Segment 1
- Segment 6
- Proposed El Casco Substation
- State Route
- Segment 2
- Segment 7
- Existing SCE Substation
- 500 Foot Buffer Area
- Segment 3
- Segment 4
- Interstate Highway
- Segment 5
- Segment A



Source: SCE, 2009a.

Figure C.2-1b

**Preconstruction Biological Resources Survey
 Map 1 of 6**