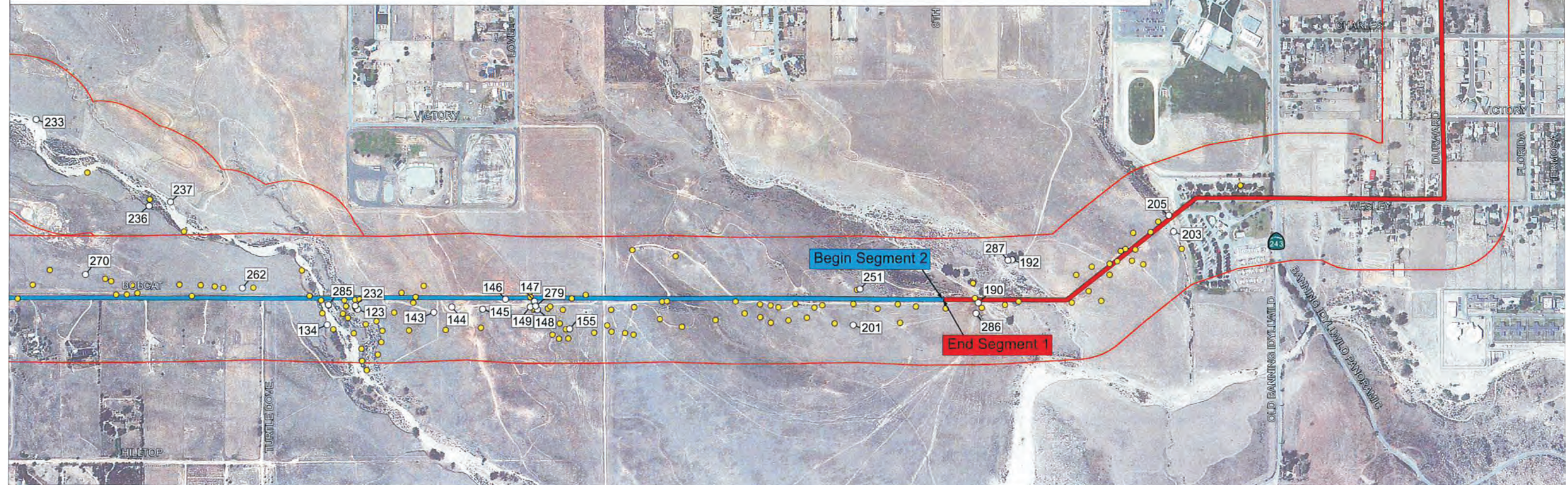
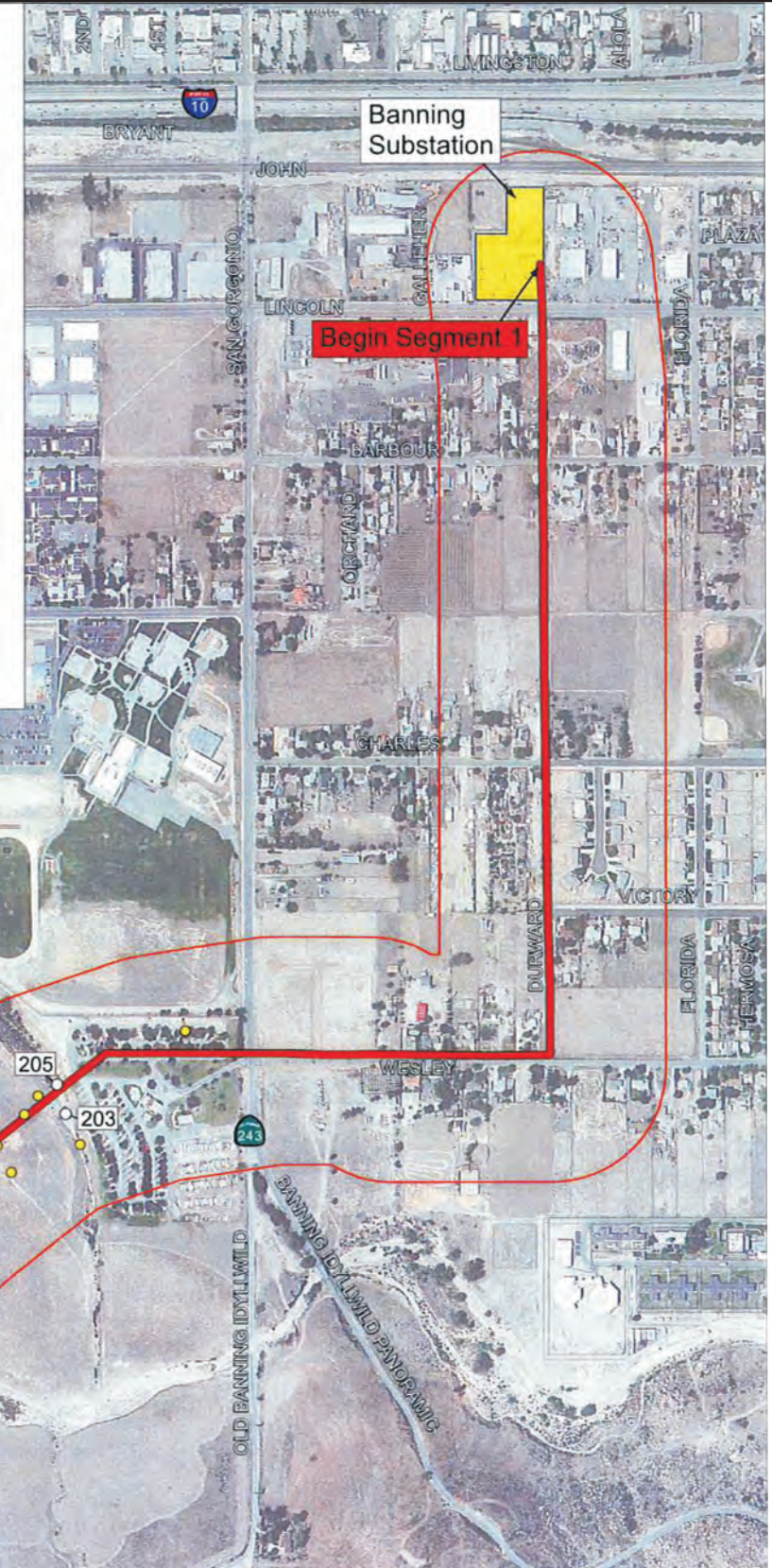


Biological Resource Survey Legend

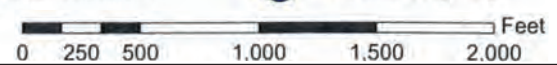
Unique Identifier	Resource Type	Latitude	Longitude	Notes	Unique Identifier	Resource Type	Latitude	Longitude	Notes	Unique Identifier	Resource Type	Latitude	Longitude	Notes
123	Nest	33.913022	-116.877621	Large to medium nest; no activity	155	Habitat	33.910563	-116.88763	Habitat for Yucaipa Onion and dudleya	237	Habitat	33.910581	-16.901568	Habitat for Yucaipa Onion and dudleya
134	Habitat	33.911388	-116.880847	Habitat for Yucaipa Onion and dudleya	190	Burrow	33.90992	-116.89522	Burrowing owl burrow; inactive	251	Nest	33.91272	-116.90608	Raven nest; no direct activity
143	Habitat	33.91058	-116.883419	L.A. Pocket Mouse Habitat; occupied	192	Burrow	33.91002	-116.89538	Potential burrowing owl burrow; inactive	262	Habitat	33.91445	-116.90906	Habitat for Yucaipa Onion and dudleya
144	Nest	33.91143	-116.88361	Bullock's oriole nest	201	Burrow	33.91040	-116.89614	Large burrow; species unknown	270	Habitat	33.910884	-116.913621	Habitat for Yucaipa Onion and dudleya
145	Burrow	33.91039	-116.88438	Potential L.A. Pocket Mouse burrow	203	Burrow	33.91038	-116.89620	Bullock's oriole nest	279	Habitat	33.910835	-116.925172	L.A. Pocket Mouse Habitat; occupied
146	Burrow	33.91050	-116.88447	Potential L.A. Pocket Mouse burrow	205	Habitat	33.910579	-116.896915	Habitat for Yucaipa Onion and dudleya	285	Animal	33.91054	-116.901622	Coastal Whiptail Lizard sighting
147	Burrow	33.91059	-116.88456	Potential L.A. Pocket Mouse burrow	232	Nest	33.91025	-116.90105	Raven stick nest; no birds observed	286	Animal	33.91033	-116.884576	Coastal Whiptail Lizard sighting
148	Nest Cavity	33.91092	-116.88459	Nesting cavity; occupancy unknown	233	Habitat	33.910579	-116.901196	Potential L.A. Pocket Mouse habitat	287	Nest	33.91142	-116.88366	Red-tailed Hawk; Active
149	Area	33.91092	-116.884609	Riparian-riverine area in wash	236	Area	33.910672	-116.901559	Riparian-riverine area in wash	●	Burrow	refer to table for coordinates		Ground squirrel burrow



LEGEND



- Segment 1
- Segment 2
- Segment 3
- Segment 4
- Segment 5
- Segment 6
- Segment 7
- Segment A
- Proposed El Casco Substation
- Existing SCE Substation
- State Route
- Interstate Highway
- 500 Foot Buffer Area



Source: SCE, 2009a.

Figure C.2-1b

**Preconstruction Biological Resources Survey
 Map 1 of 6**